

Data Path : Z:\pestpcbsrv\HPCHEM1\ECD\_S\Data\PS122719\  
 Data File : PS008228.D  
 Signal(s) : Signal #1: ECD1A.ch Signal #2: ECD2B.ch  
 Acq On : 28 Dec 2019 00:11  
 Operator : SM\AJ  
 Sample : K6439-11  
 Misc :  
 ALS Vial : 32 Sample Multiplier: 1

Instrument :  
 ECD\_S  
 ClientSampleId :  
 LIED-BF008-01

Integration File signal 1: autoint1.e  
 Integration File signal 2: autoint2.e  
 Quant Time: Dec 28 04:30:27 2019  
 Quant Method : Z:\pestpcbsrv\HPCHEM1\ECD\_S\Method\PS122619.M  
 Quant Title : 8080.M  
 QLast Update : Fri Dec 27 02:43:58 2019  
 Response via : Initial Calibration  
 Integrator: ChemStation

Volume Inj. : 2 µl  
 Signal #1 Phase : Rtx-CLPesticides Signal #2 Phase: Rtx-CLPesticides2  
 Signal #1 Info : 30M x 0.32mm x0.5 Signal #2 Info : 30M x 0.32mm x 0.25µm

Compound	RT#1	RT#2	Resp#1	Resp#2	ng/ml	ng/ml
-----						
System Monitoring Compounds						
4) S 2,4-DCAA	5.368	5.115	470.4E6	231.1E6	232.822	258.087
Target Compounds						
1) T Dalapon	1.944	1.659	98101648	28942715	40.865	28.372 #
2) T 3,5-DICHL...	0.000	4.452	0	60486125	N.D.	51.946
5) T DICAMBA	5.453	5.212	54832356	13784675	7.541	4.046 #
7) T MCPA	5.781	5.477	3812525	30305066	<MDL	7.966 #
8) T DICHLORPROP	0.000	5.770	0	20130825	N.D.	23.517
9) T 2,4-D	6.397	6.003	83671929	6973017	50.988	6.868 #
10) T Pentachlo...	0.000	6.388	0	8210956	N.D.	<MDL
11) T 2,4,5-TP ...	0.000	6.697	0	94543638	N.D.	18.920
13) T 2,4-DB	7.938	0.000	6457189	0	4.860	N.D. #
14) T DINOSEB	0.000	7.877	0	16401784	N.D.	4.379
15) T Picloram	0.000	8.737	0	18731153	N.D.	2.870
16) T DCPA	0.000	8.737	0	18731153	N.D.	2.808
-----						

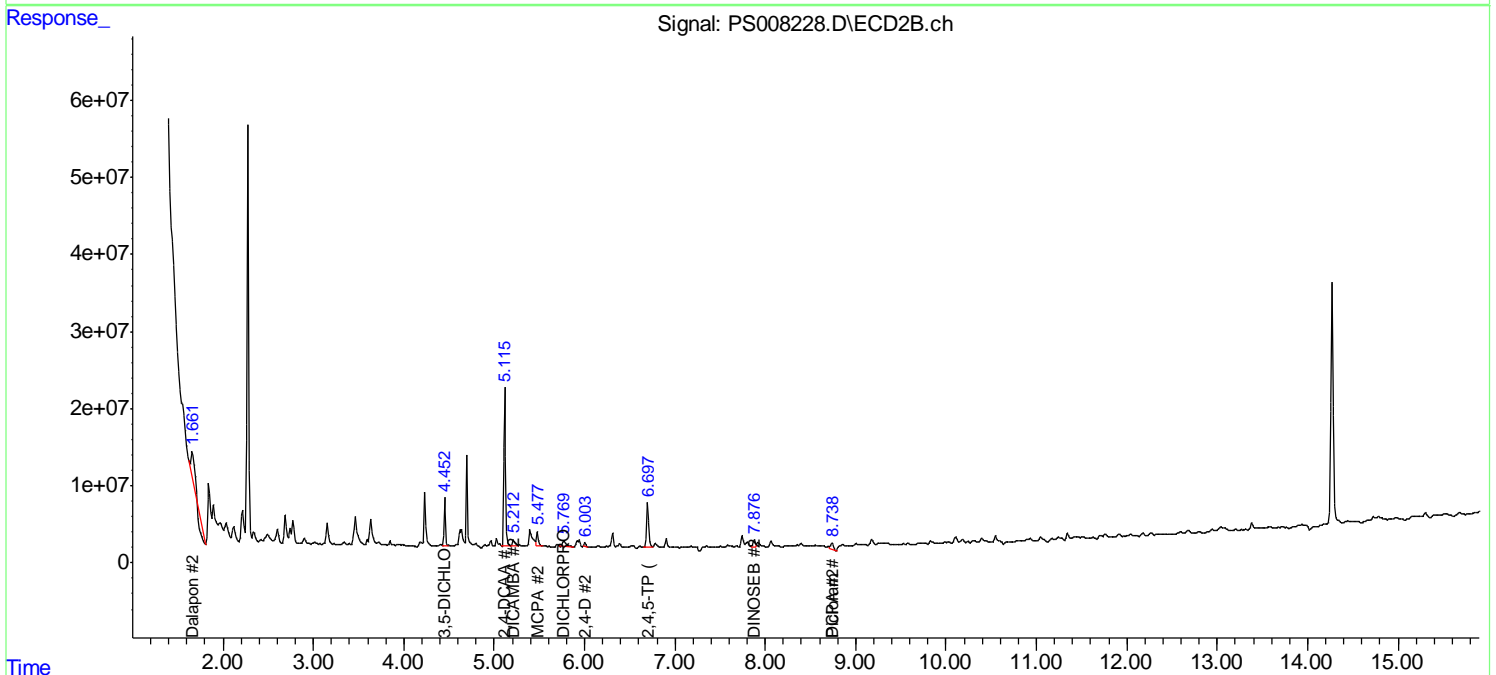
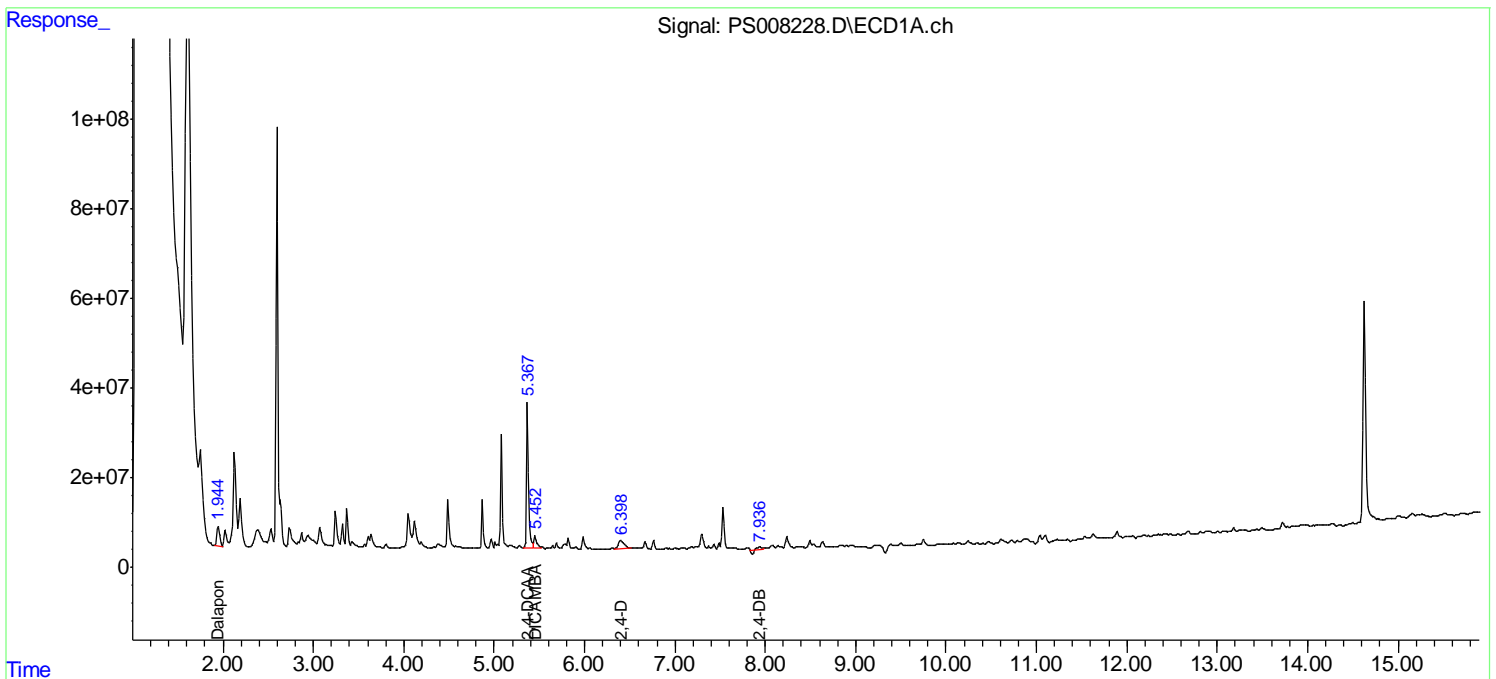
(f)=RT Delta > 1/2 Window (#)=Amounts differ by > 25% (m)=manual int.

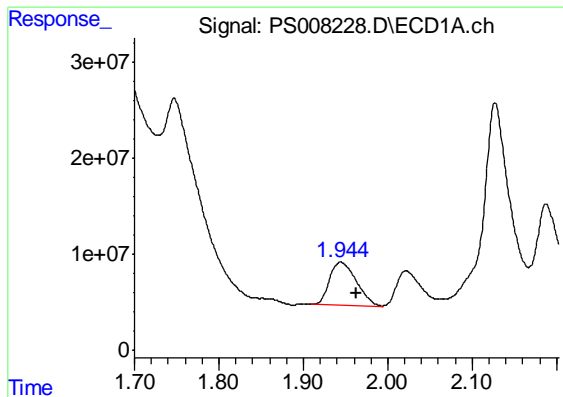
Data Path : Z:\pestpcbsrv\HPCHEM1\ECD\_S\Data\PS122719\  
 Data File : PS008228.D  
 Signal(s) : Signal #1: ECD1A.ch Signal #2: ECD2B.ch  
 Acq On : 28 Dec 2019 00:11  
 Operator : SM\AJ  
 Sample : K6439-11  
 Misc :  
 ALS Vial : 32 Sample Multiplier: 1

Instrument :  
 ECD\_S  
 ClientSampled :  
 LIED-BF008-01

Integration File signal 1: autoint1.e  
 Integration File signal 2: autoint2.e  
 Quant Time: Dec 28 04:30:27 2019  
 Quant Method : Z:\pestpcbsrv\HPCHEM1\ECD\_S\Method\PS122619.M  
 Quant Title : 8080.M  
 QLast Update : Fri Dec 27 02:43:58 2019  
 Response via : Initial Calibration  
 Integrator: ChemStation

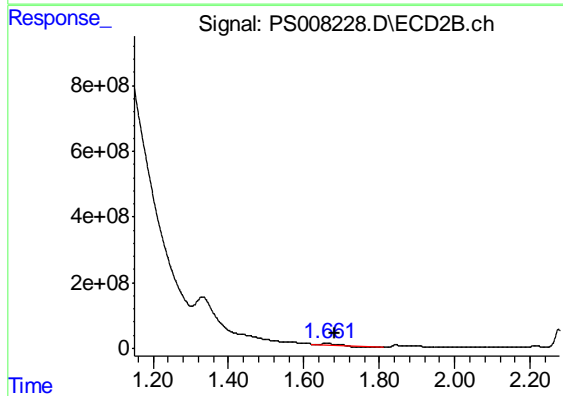
Volume Inj. : 2 µl  
 Signal #1 Phase : Rtx-CLPesticides Signal #2 Phase: Rtx-CLPesticides2  
 Signal #1 Info : 30M x 0.32mm x0.5 Signal #2 Info : 30M x 0.32mm x 0.25µm



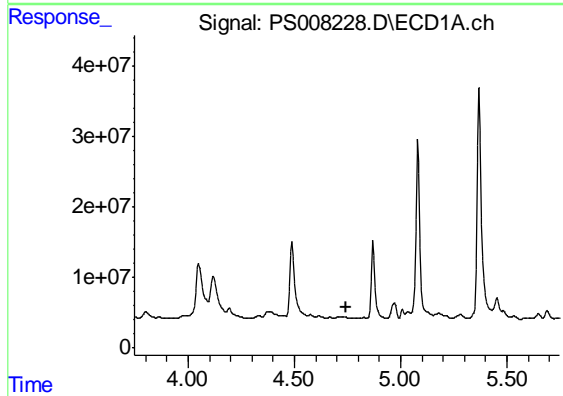


#1 Dalapon  
 R.T.: 1.944 min  
 Delta R.T.: -0.019 min  
 Response: 98101648  
 Conc: 40.87 ng/ml

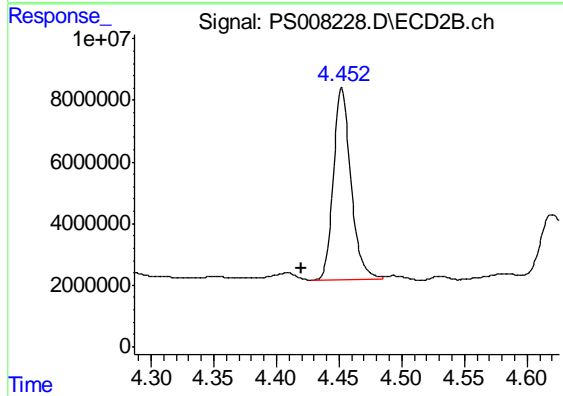
Instrument :  
 ECD\_S  
 ClientSampleId :  
 LIED-BF008-01



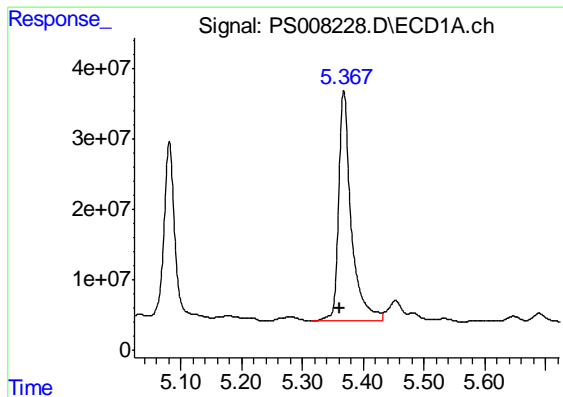
#1 Dalapon  
 R.T.: 1.659 min  
 Delta R.T.: -0.023 min  
 Response: 28942715  
 Conc: 28.37 ng/ml



#2 3,5-DICHLOROBENZOIC ACID  
 R.T.: 0.000 min  
 Exp R.T. : 4.747 min  
 Response: 0  
 Conc: N.D.



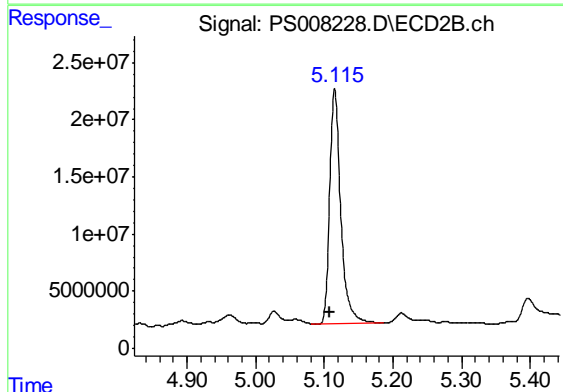
#2 3,5-DICHLOROBENZOIC ACID  
 R.T.: 4.452 min  
 Delta R.T.: 0.032 min  
 Response: 60486125  
 Conc: 51.95 ng/ml



#4 2,4-DCAA

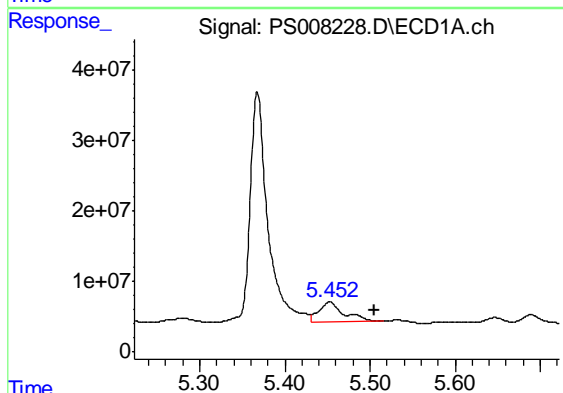
R.T.: 5.368 min  
 Delta R.T.: 0.007 min  
 Response: 470381047  
 Conc: 232.82 ng/ml

Instrument :  
 ECD\_S  
 ClientSampleId :  
 LIED-BF008-01



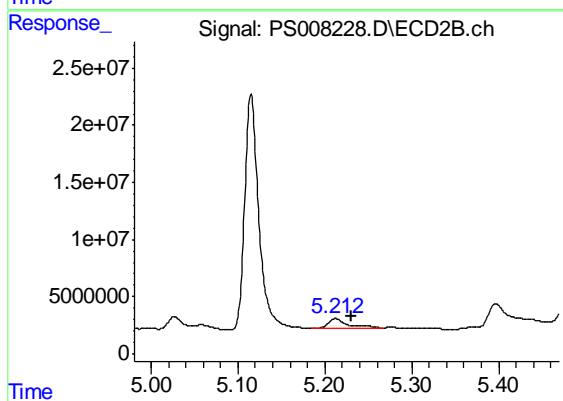
#4 2,4-DCAA

R.T.: 5.115 min  
 Delta R.T.: 0.007 min  
 Response: 231086702  
 Conc: 258.09 ng/ml



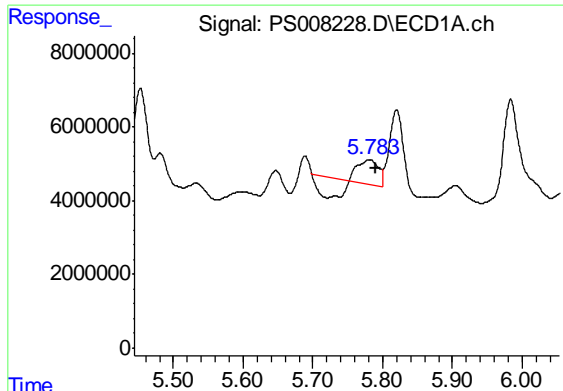
#5 DICAMBA

R.T.: 5.453 min  
 Delta R.T.: -0.053 min  
 Response: 54832356  
 Conc: 7.54 ng/ml



#5 DICAMBA

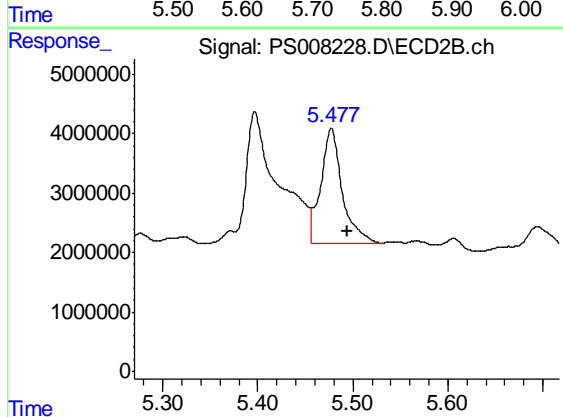
R.T.: 5.212 min  
 Delta R.T.: -0.018 min  
 Response: 13784675  
 Conc: 4.05 ng/ml



#7 MCPA

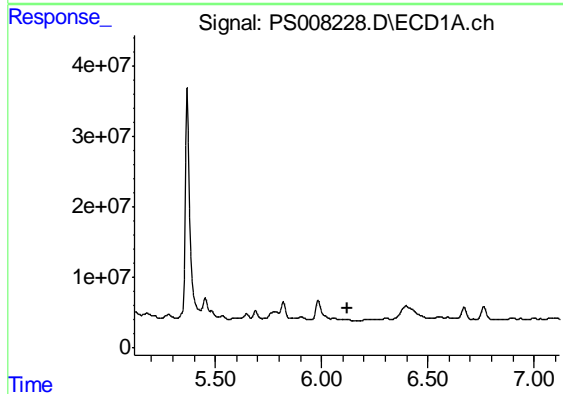
R.T.: 5.781 min  
 Delta R.T.: -0.008 min  
 Response: 3812525  
 Conc: N.D.

Instrument :  
 ECD\_S  
 ClientSampleId :  
 LIED-BF008-01



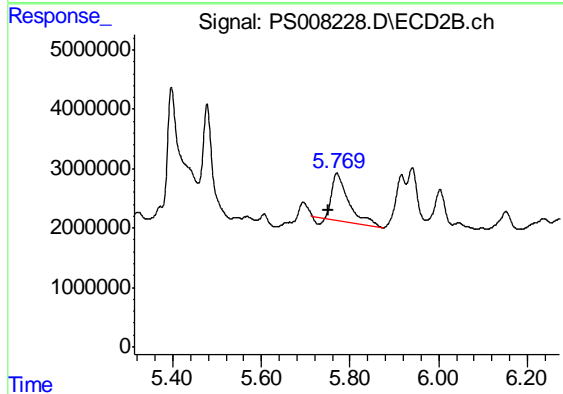
#7 MCPA

R.T.: 5.477 min  
 Delta R.T.: -0.017 min  
 Response: 30305066  
 Conc: 7.97 ug/ml



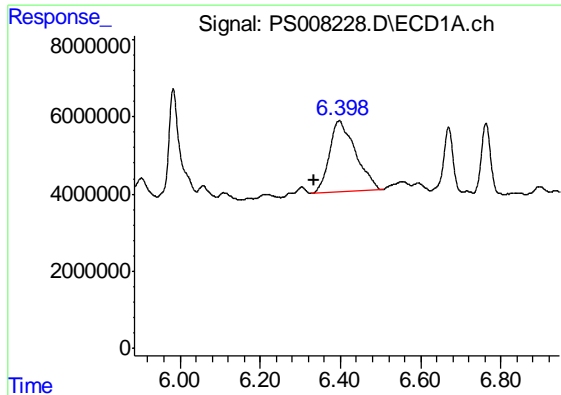
#8 DICHLORPROP

R.T.: 0.000 min  
 Exp R.T. : 6.120 min  
 Response: 0  
 Conc: N.D.



#8 DICHLORPROP

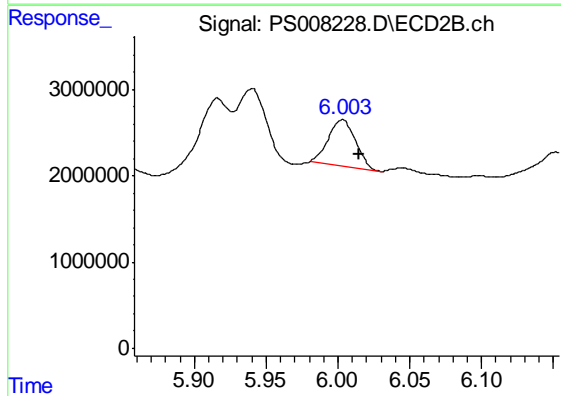
R.T.: 5.770 min  
 Delta R.T.: 0.020 min  
 Response: 20130825  
 Conc: 23.52 ng/ml



#9 2,4-D

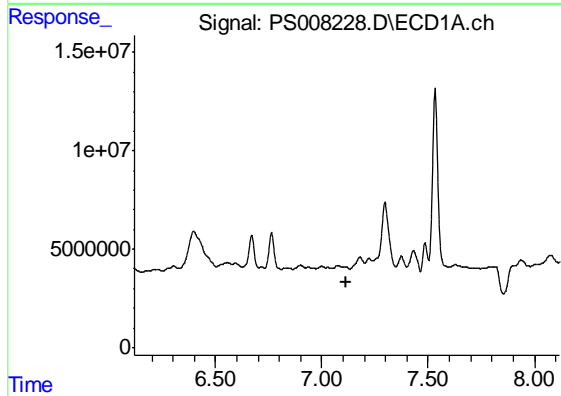
R.T.: 6.397 min  
 Delta R.T.: 0.063 min  
 Response: 83671929  
 Conc: 50.99 ng/ml

Instrument :  
 ECD\_S  
 ClientSampleId :  
 LIED-BF008-01



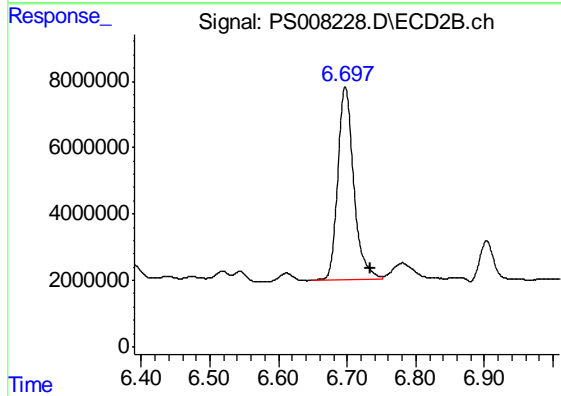
#9 2,4-D

R.T.: 6.003 min  
 Delta R.T.: -0.012 min  
 Response: 6973017  
 Conc: 6.87 ng/ml



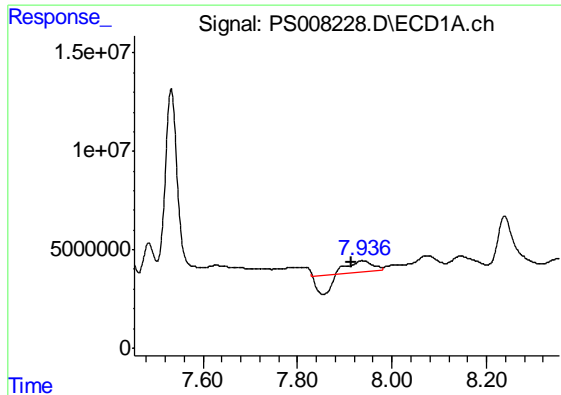
#11 2,4,5-TP (SILVEX)

R.T.: 0.000 min  
 Exp R.T. : 7.118 min  
 Response: 0  
 Conc: N.D.



#11 2,4,5-TP (SILVEX)

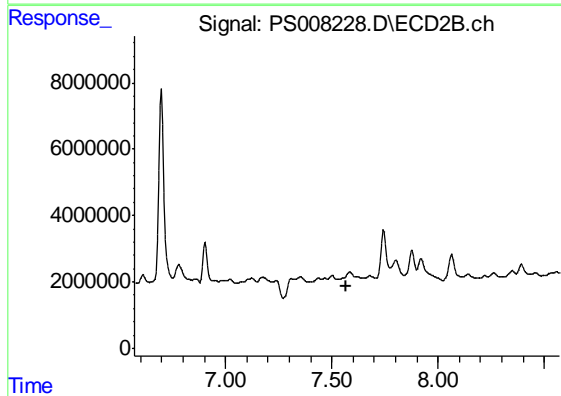
R.T.: 6.697 min  
 Delta R.T.: -0.037 min  
 Response: 94543638  
 Conc: 18.92 ng/ml



#13 2,4-DB

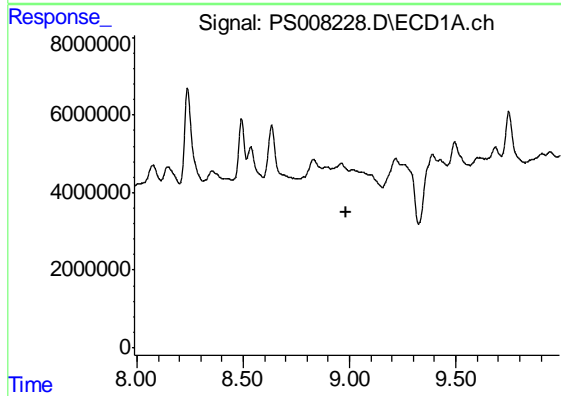
R.T.: 7.938 min  
 Delta R.T.: 0.023 min  
 Response: 6457189  
 Conc: 4.86 ng/ml

Instrument :  
 ECD\_S  
 ClientSampleId :  
 LIED-BF008-01



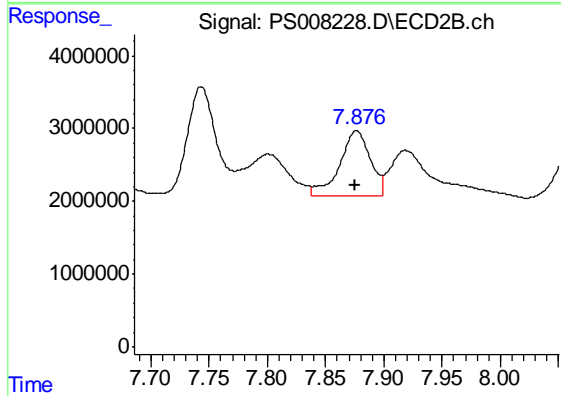
#13 2,4-DB

R.T.: 0.000 min  
 Exp R.T. : 7.571 min  
 Response: 0  
 Conc: N.D.



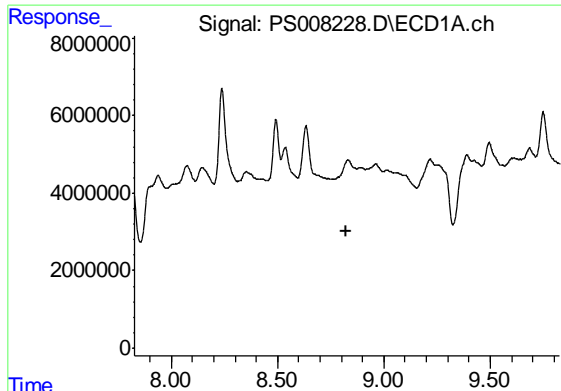
#14 DINOSEB

R.T.: 0.000 min  
 Exp R.T. : 8.988 min  
 Response: 0  
 Conc: N.D.



#14 DINOSEB

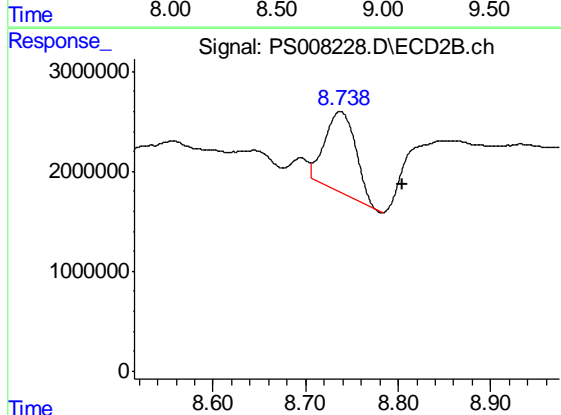
R.T.: 7.877 min  
 Delta R.T.: 0.000 min  
 Response: 16401784  
 Conc: 4.38 ng/ml



#15 Picloram

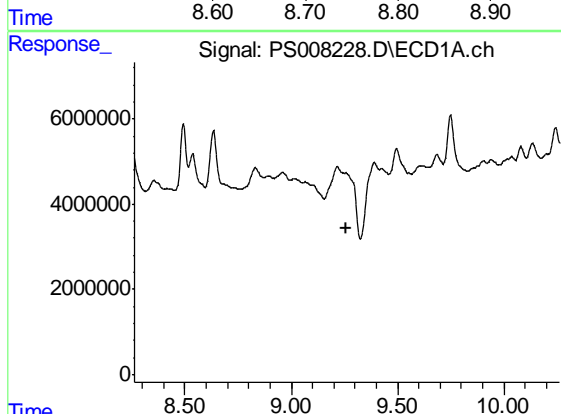
R.T.: 0.000 min  
 Exp R.T. : 8.826 min  
 Response: 0  
 Conc: N.D.

Instrument :  
 ECD\_S  
 ClientSampleId :  
 LIED-BF008-01



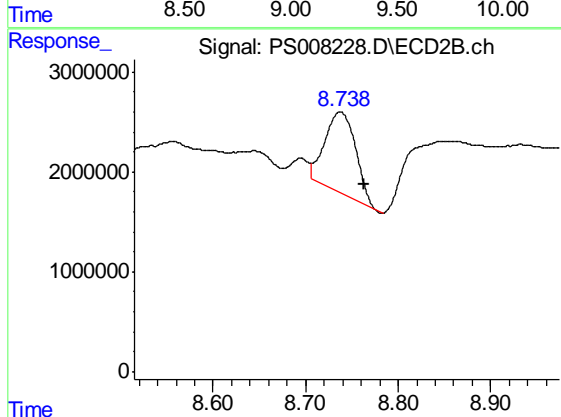
#15 Picloram

R.T.: 8.737 min  
 Delta R.T.: -0.067 min  
 Response: 18731153  
 Conc: 2.87 ng/ml



#16 DCPA

R.T.: 0.000 min  
 Exp R.T. : 9.262 min  
 Response: 0  
 Conc: N.D.



#16 DCPA

R.T.: 8.737 min  
 Delta R.T.: -0.026 min  
 Response: 18731153  
 Conc: 2.81 ng/ml