

Data Path : Z:\pestpcbsrv\HPCHEM1\ECD_S\Data\PS122724\
 Data File : PS028826.D
 Signal(s) : Signal #1: ECD1A.ch Signal #2: ECD2B.ch
 Acq On : 27 Dec 2024 09:57
 Operator : AR\AJ
 Sample : HEXANE
 Misc :
 ALS Vial : 1 Sample Multiplier: 1

Instrument :
 ECD_S
 ClientSampleId :
 HEXANE

Integration File signal 1: autoint1.e
 Integration File signal 2: autoint2.e
 Quant Time: Dec 28 02:05:12 2024
 Quant Method : Z:\pestpcbsrv\HPCHEM1\ECD_S\Method\PS122324.M
 Quant Title : 8080.M
 QLast Update : Mon Dec 23 13:44:25 2024
 Response via : Initial Calibration
 Integrator: ChemStation

Volume Inj. : 1 µl
 Signal #1 Phase : ZB-MR2 Signal #2 Phase: ZB-MR2
 Signal #1 Info : 30M x 0.32mm x0.5 Signal #2 Info : 30M x 0.32mm x 0.25µm

Compound	RT#1	RT#2	Resp#1	Resp#2	ng/ml	ng/ml
----------	------	------	--------	--------	-------	-------

System Monitoring Compounds

Target Compounds

1) T Dalapon	2.649f	0.000	8486609	0	3.013	N.D. #
2) T 3,5-DICHL...	6.390	0.000	1220971	0	<MDL	N.D. #
3) T 4-Nitroph...	6.993	0.000	9378716	0	6.244	N.D. #
6) T MCPP	7.527f	0.000	869605	0	<MDL	N.D. #
7) T MCPA	7.754f	0.000	484742	0	<MDL	N.D. #
8) T DICHLORPROP	8.119	8.646f	1096053	7688429	<MDL	5.573 #
9) T 2,4-D	8.349	0.000	9349563	0	3.281	N.D. #
10) T Pentachlo...	8.662f	0.000	12516662	0	<MDL	N.D. #
11) T 2,4,5-TP ...	9.183	9.845	1700527	5996459	<MDL	<MDL #
12) T 2,4,5-T	9.503	10.247	212210	6332808	<MDL	<MDL #
13) T 2,4-DB	10.055	0.000	4629675	0	1.483	N.D. #
14) T DINOSEB	11.262	0.000	6845128	0	<MDL	N.D. #
15) T Picloram	11.086	12.282	48427988	11094160	1.806	<MDL #
16) T DCPA	11.559	12.282f	2059881	11094160	<MDL	1.033 #

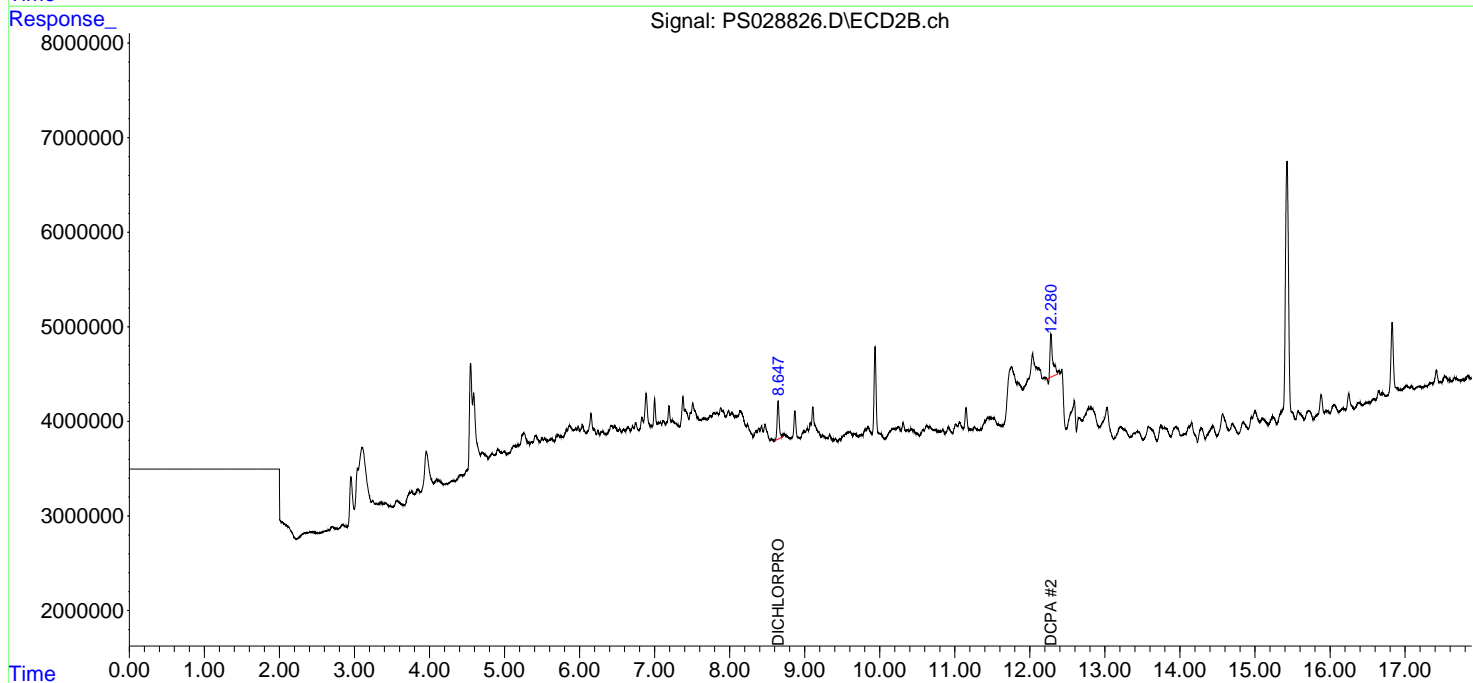
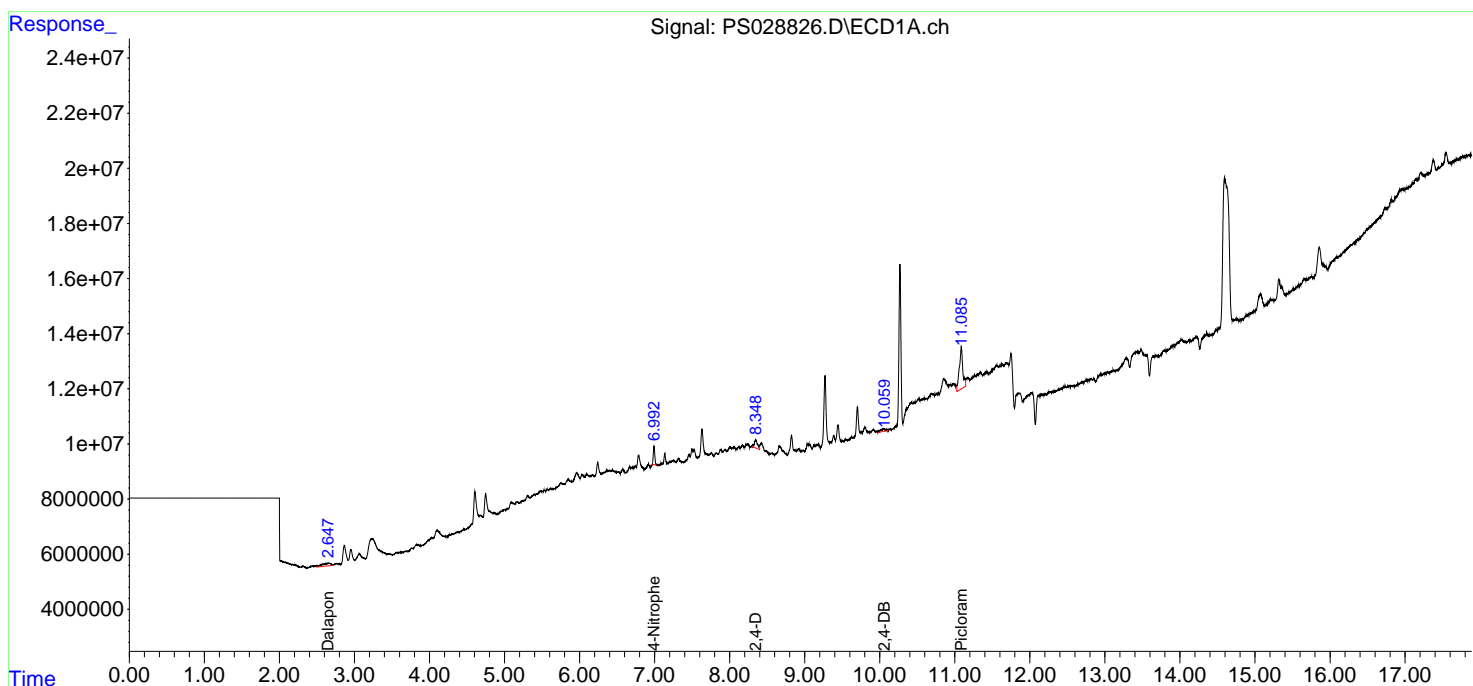
(f)=RT Delta > 1/2 Window (#)=Amounts differ by > 25% (m)=manual int.

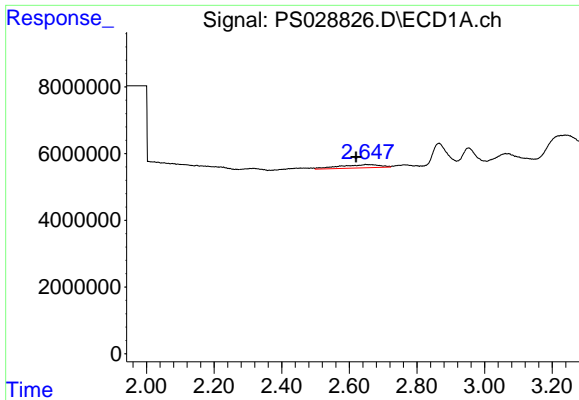
Data Path : Z:\pestpcbsrv\HPCHEM1\ECD_S\Data\PS122724\
 Data File : PS028826.D
 Signal(s) : Signal #1: ECD1A.ch Signal #2: ECD2B.ch
 Acq On : 27 Dec 2024 09:57
 Operator : AR\AJ
 Sample : HEXANE
 Misc :
 ALS Vial : 1 Sample Multiplier: 1

Instrument :
 ECD_S
 ClientSampleId :
 HEXANE

Integration File signal 1: autoint1.e
 Integration File signal 2: autoint2.e
 Quant Time: Dec 28 02:05:12 2024
 Quant Method : Z:\pestpcbsrv\HPCHEM1\ECD_S\Method\PS122324.M
 Quant Title : 8080.M
 QLast Update : Mon Dec 23 13:44:25 2024
 Response via : Initial Calibration
 Integrator: ChemStation

Volume Inj. : 1 µl
 Signal #1 Phase : ZB-MR1 Signal #2 Phase: ZB-MR2
 Signal #1 Info : 30M x 0.32mm x0.5 Signal #2 Info : 30M x 0.32mm x 0.25µm

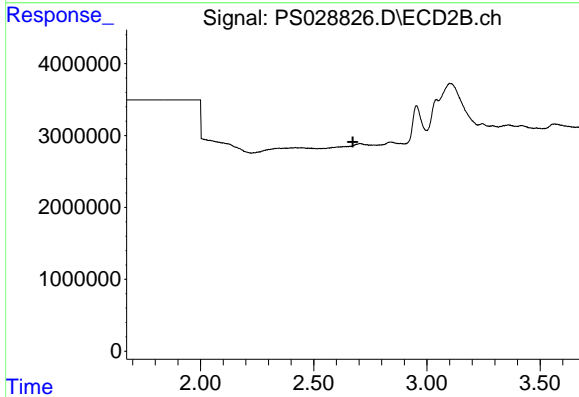




#1 Dalapon

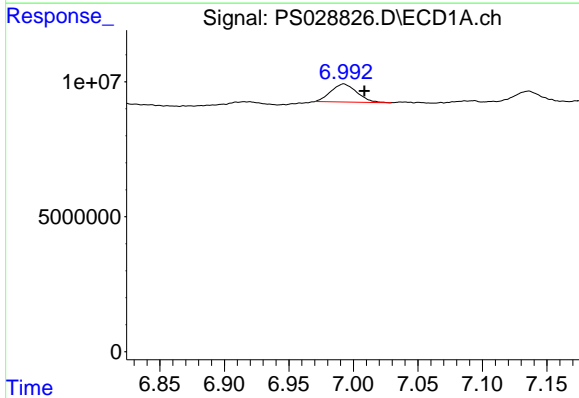
R.T.: 2.649 min
 Delta R.T.: 0.029 min
 Response: 8486609
 Conc: 3.01 ng/ml

Instrument : ECD_S
 ClientSampleId : HEXANE



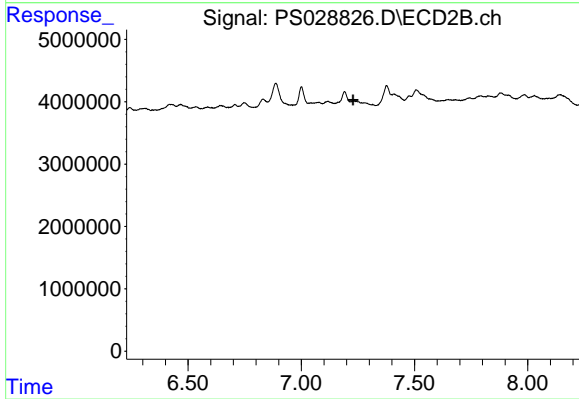
#1 Dalapon

R.T.: 0.000 min
 Exp R.T. : 2.673 min
 Response: 0
 Conc: N.D.



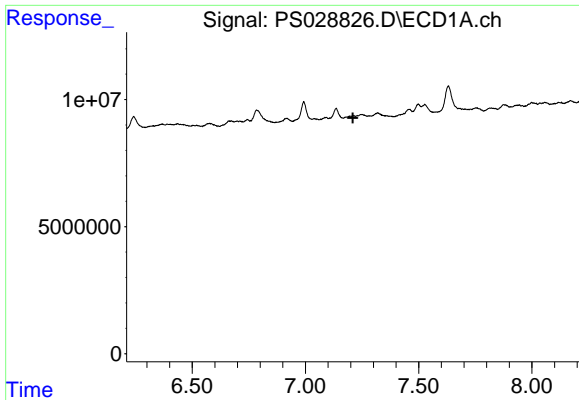
#3 4-Nitrophenol

R.T.: 6.993 min
 Delta R.T.: -0.016 min
 Response: 9378716
 Conc: 6.24 ng/ml



#3 4-Nitrophenol

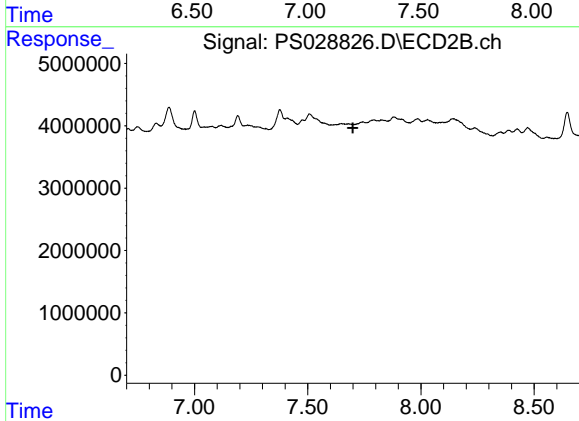
R.T.: 0.000 min
 Exp R.T. : 7.228 min
 Response: 0
 Conc: N.D.



#4 2,4-DCAA

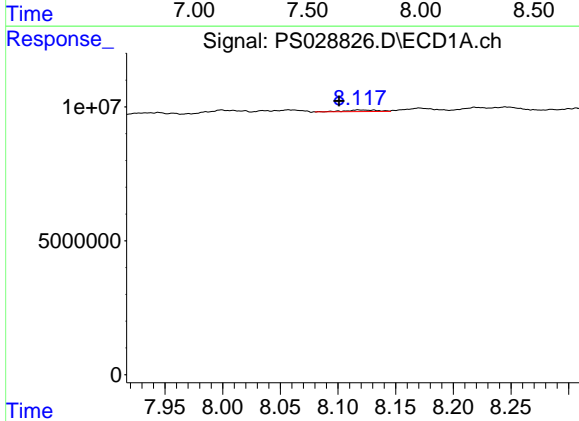
R.T.: 7.246 min
 Delta R.T.: 0.037 min
 Response: -1131774
 Conc: N.D.

Instrument :
 ECD_S
 ClientSampleId :
 HEXANE



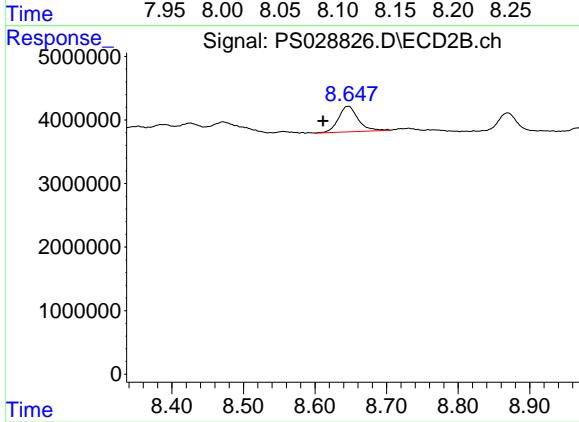
#4 2,4-DCAA

R.T.: 0.000 min
 Exp R.T. : 7.699 min
 Response: 0
 Conc: N.D.



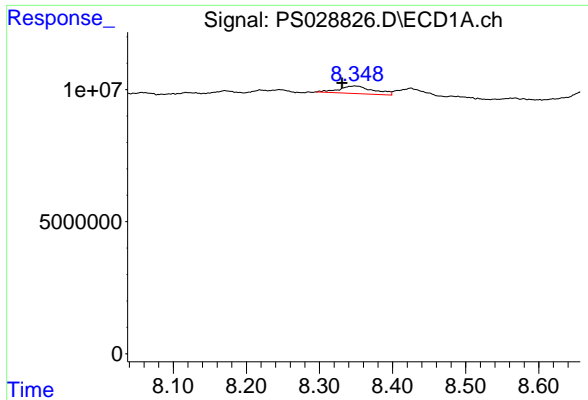
#8 DICHLORPROP

R.T.: 8.119 min
 Delta R.T.: 0.018 min
 Response: 1096053
 Conc: N.D.



#8 DICHLORPROP

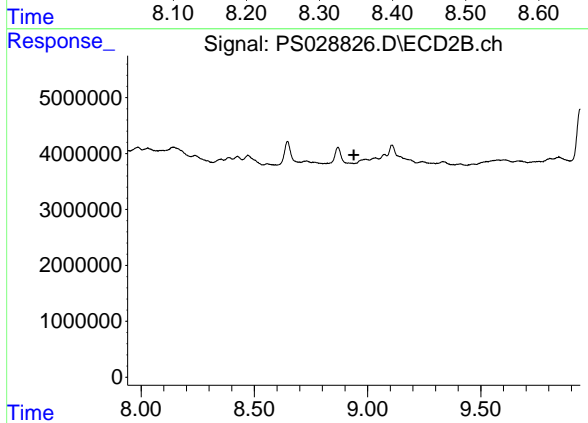
R.T.: 8.646 min
 Delta R.T.: 0.035 min
 Response: 7688429
 Conc: 5.57 ng/ml



#9 2,4-D

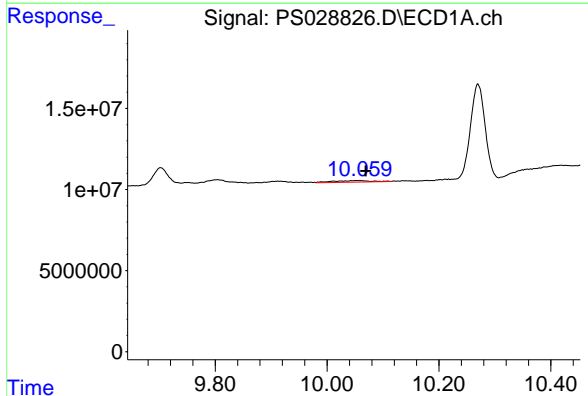
R.T.: 8.349 min
 Delta R.T.: 0.018 min
 Response: 9349563
 Conc: 3.28 ng/ml

Instrument : ECD_S
 ClientSampleId : HEXANE



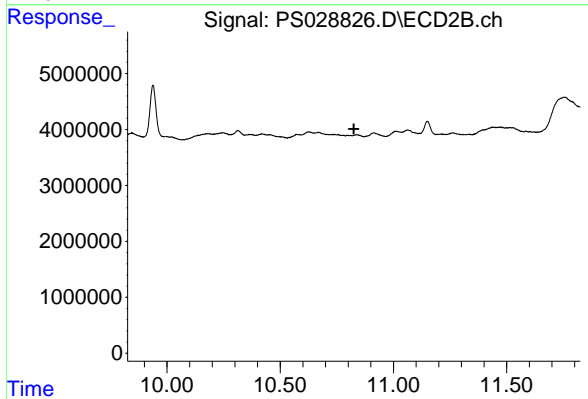
#9 2,4-D

R.T.: 0.000 min
 Exp R.T. : 8.939 min
 Response: 0
 Conc: N.D.



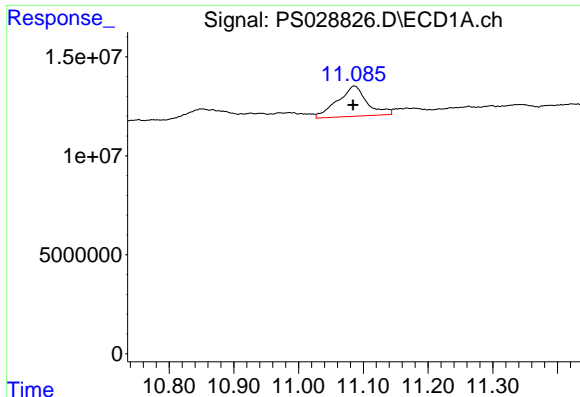
#13 2,4-DB

R.T.: 10.055 min
 Delta R.T.: -0.014 min
 Response: 4629675
 Conc: 1.48 ng/ml



#13 2,4-DB

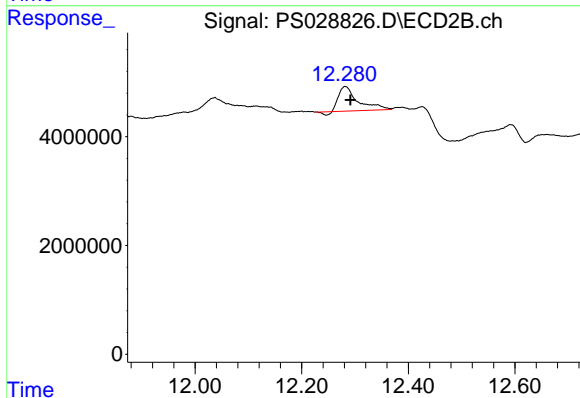
R.T.: 0.000 min
 Exp R.T. : 10.826 min
 Response: 0
 Conc: N.D.



#15 Picloram

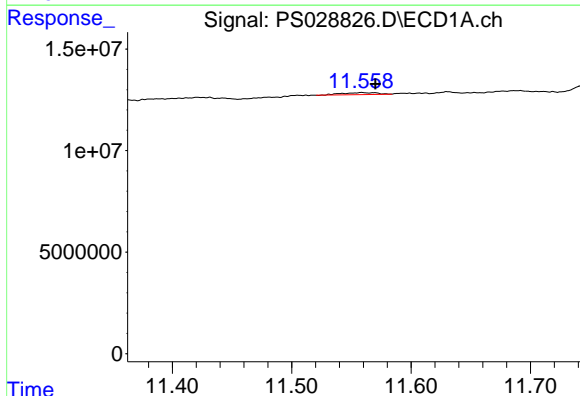
R.T.: 11.086 min
 Delta R.T.: 0.002 min
 Response: 48427988
 Conc: 1.81 ng/ml

Instrument :
 ECD_S
 ClientSampleId :
 HEXANE



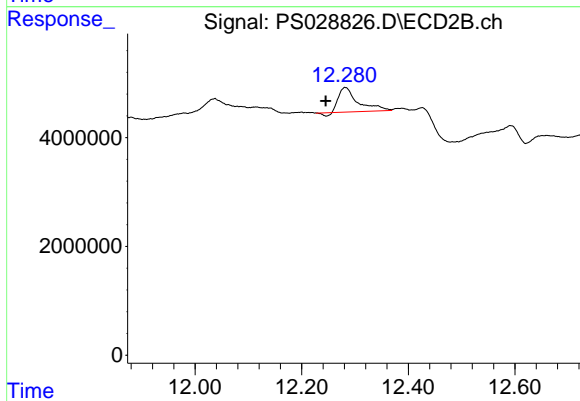
#15 Picloram

R.T.: 12.282 min
 Delta R.T.: -0.010 min
 Response: 11094160
 Conc: N.D.



#16 DCPA

R.T.: 11.559 min
 Delta R.T.: -0.011 min
 Response: 2059881
 Conc: N.D.



#16 DCPA

R.T.: 12.282 min
 Delta R.T.: 0.036 min
 Response: 11094160
 Conc: 1.03 ng/ml