

Data Path : Z:\pestpcbsrv\HPCHEM1\ECD\_S\Data\PS122724\  
 Data File : PS028840.D  
 Signal(s) : Signal #1: ECD1A.ch Signal #2: ECD2B.ch  
 Acq On : 27 Dec 2024 21:56  
 Operator : AR\AJ  
 Sample : PB165896TB  
 Misc :  
 ALS Vial : 13 Sample Multiplier: 1

Instrument :  
 ECD\_S  
 ClientSampleId :  
 PB165858TB

Integration File signal 1: autoint1.e  
 Integration File signal 2: autoint2.e  
 Quant Time: Dec 28 02:08:12 2024  
 Quant Method : Z:\pestpcbsrv\HPCHEM1\ECD\_S\Method\PS122324.M  
 Quant Title : 8080.M  
 QLast Update : Mon Dec 23 13:44:25 2024  
 Response via : Initial Calibration  
 Integrator: ChemStation

Volume Inj. : 1 µl  
 Signal #1 Phase : ZB-MR2 Signal #2 Phase: ZB-MR2  
 Signal #1 Info : 30M x 0.32mm x0.5 Signal #2 Info : 30M x 0.32mm x 0.25µm

Compound	RT#1	RT#2	Resp#1	Resp#2	ng/ml	ng/ml
-----						
System Monitoring Compounds						
4) S 2,4-DCAA	7.206	7.694	1622.2E6	466.4E6	717.131	414.396 #
Target Compounds						
2) T 3,5-DICHL...	0.000	6.656	0	7707751	N.D.	4.650
5) T DICAMBA	0.000	7.878	0	13114956	N.D.	2.389
6) T MCPP	0.000	7.992	0	12628669	N.D.	3.865
7) T MCPA	0.000	8.243	0	35097773	N.D.	7.576
8) T DICHLORPROP	8.112	8.649f	28547726	151.0E6	10.760	109.437 #
9) T 2,4-D	8.323	8.982f	8783280	4250522	3.082	2.945
10) T Pentachlo...	8.625	9.460	4361085	8587966	<MDL	<MDL #
11) T 2,4,5-TP ...	9.195	9.836	5978061	12032799	<MDL	1.339 #
12) T 2,4,5-T	9.495	10.227f	6140406	52375802	<MDL	6.014 #
13) T 2,4-DB	10.040f	10.844	389.1E6	-12871023	124.639	N.D. #
14) T DINOSEB	11.288	11.198	10096645	11158627	<MDL	1.812 #
15) T Picloram	11.078	12.283	242.0E6	64536152	9.026	5.027 #
16) T DCPA	11.620f	12.283f	-99398122	64536152	N.D.	6.006

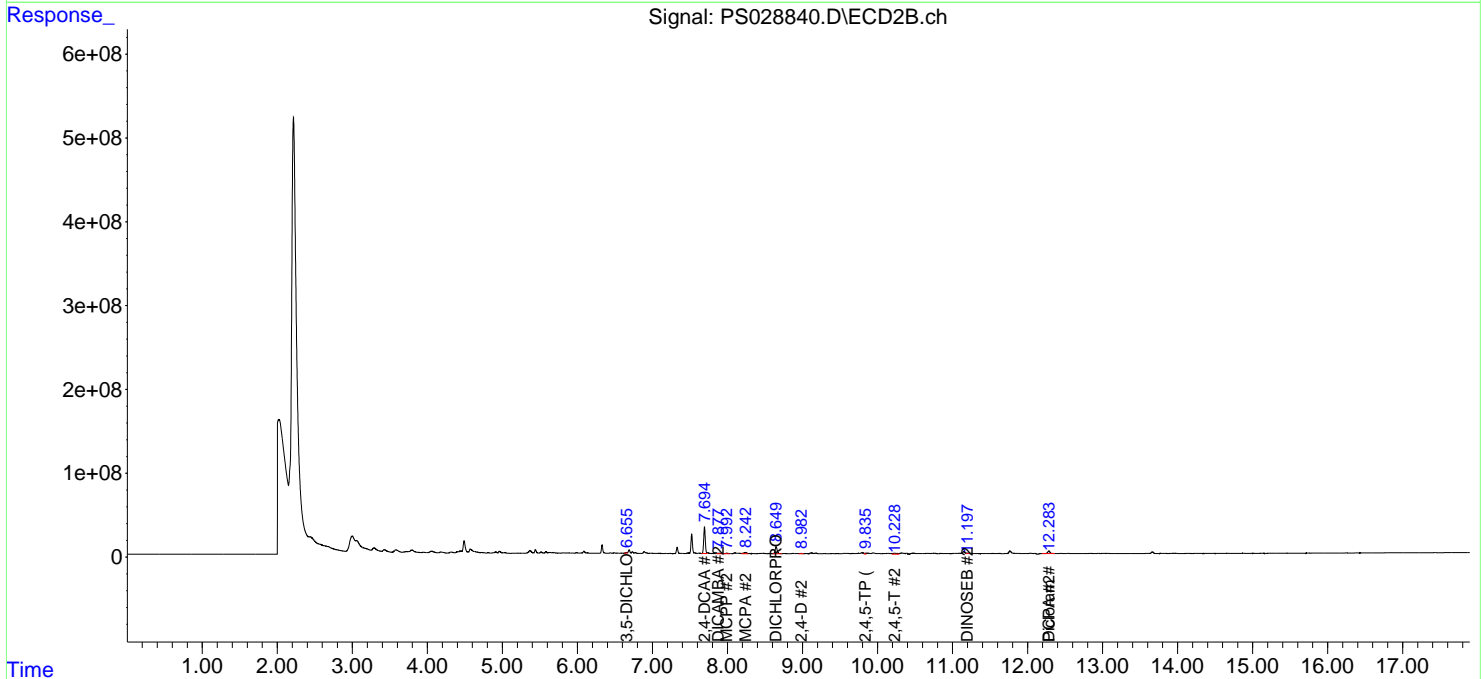
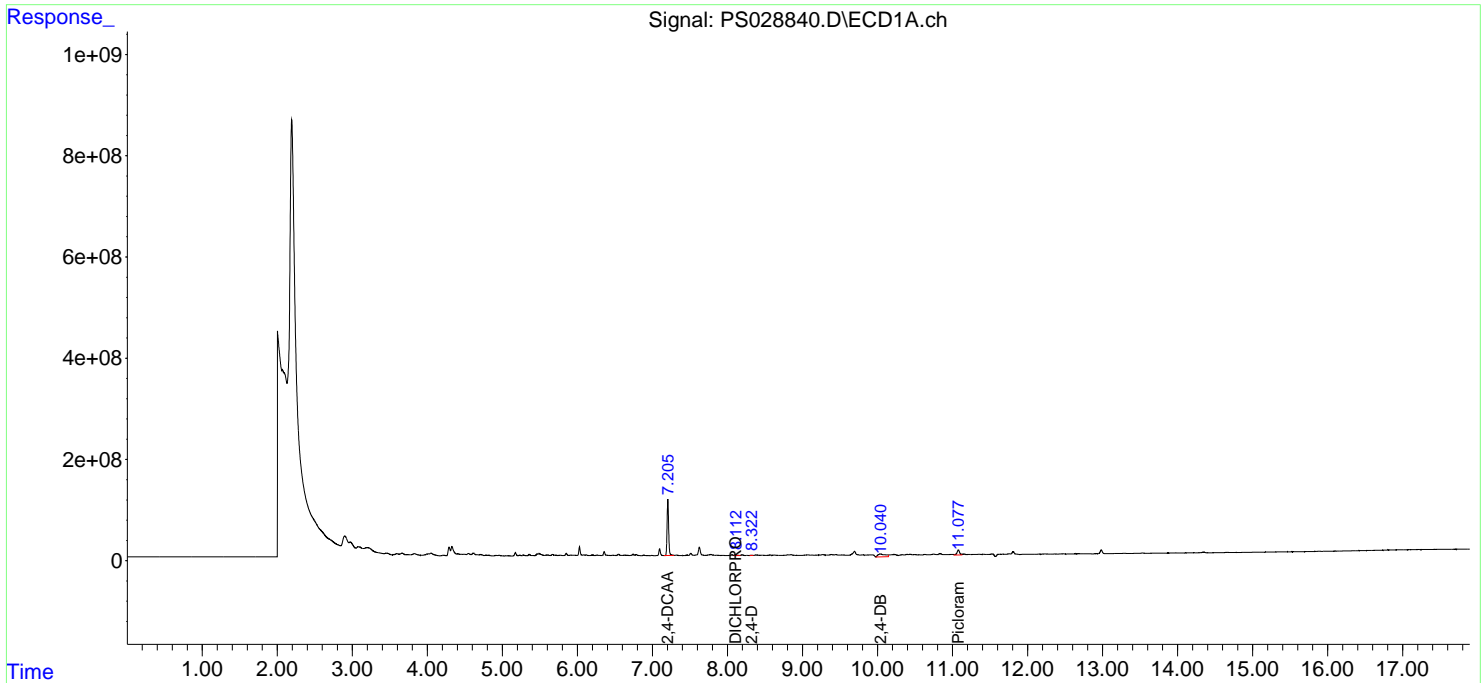
(f)=RT Delta > 1/2 Window (#)=Amounts differ by > 25% (m)=manual int.

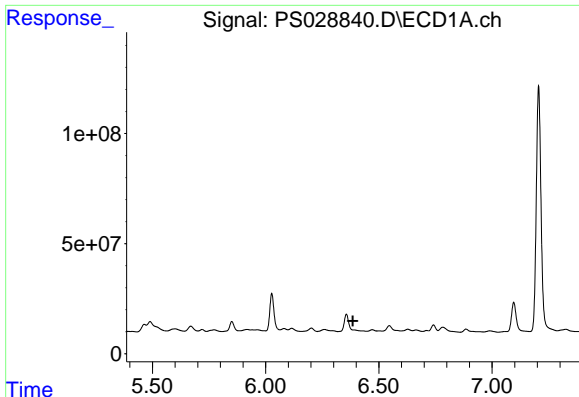
Data Path : Z:\pestpcbsrv\HPCHEM1\ECD\_S\Data\PS122724\  
 Data File : PS028840.D  
 Signal(s) : Signal #1: ECD1A.ch Signal #2: ECD2B.ch  
 Acq On : 27 Dec 2024 21:56  
 Operator : AR\AJ  
 Sample : PB165896TB  
 Misc :  
 ALS Vial : 13 Sample Multiplier: 1

Instrument :  
 ECD\_S  
 ClientSampleId :  
 PB165858TB

Integration File signal 1: autoint1.e  
 Integration File signal 2: autoint2.e  
 Quant Time: Dec 28 02:08:12 2024  
 Quant Method : Z:\pestpcbsrv\HPCHEM1\ECD\_S\Method\PS122324.M  
 Quant Title : 8080.M  
 QLast Update : Mon Dec 23 13:44:25 2024  
 Response via : Initial Calibration  
 Integrator: ChemStation

Volume Inj. : 1 µl  
 Signal #1 Phase : ZB-MR1 Signal #2 Phase: ZB-MR2  
 Signal #1 Info : 30M x 0.32mm x0.5 Signal #2 Info : 30M x 0.32mm x 0.25µm

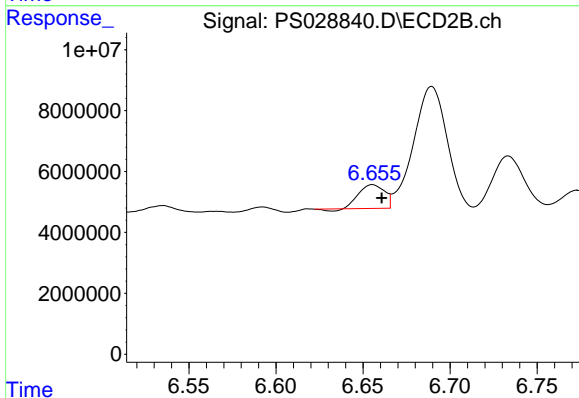




#2 3,5-DICHLORO BENZOIC ACID

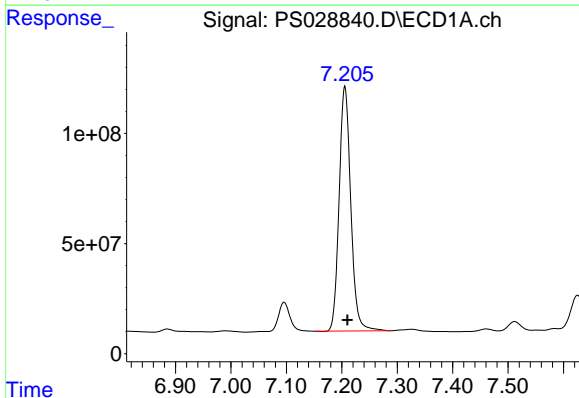
R.T.: 0.000 min  
 Exp R.T.: 6.385 min  
 Response: 0  
 Conc: N.D.

Instrument :  
 ECD\_S  
 ClientSampleId :  
 PB165858TB



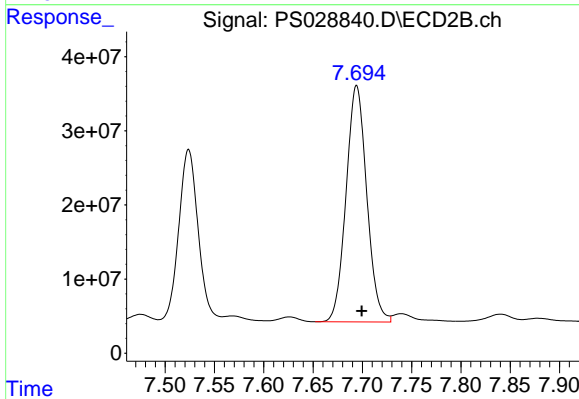
#2 3,5-DICHLORO BENZOIC ACID

R.T.: 6.656 min  
 Delta R.T.: -0.005 min  
 Response: 7707751  
 Conc: 4.65 ng/ml



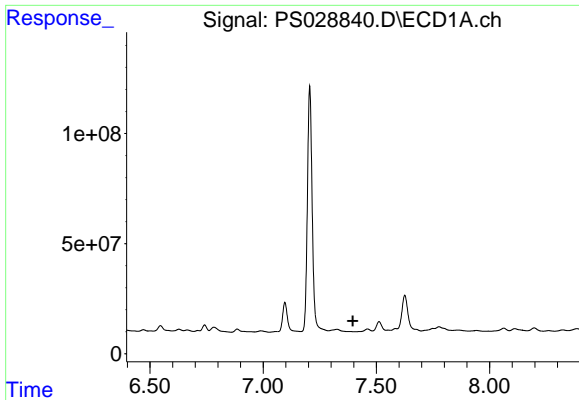
#4 2,4-DCAA

R.T.: 7.206 min  
 Delta R.T.: -0.004 min  
 Response: 1622167784  
 Conc: 717.13 ng/ml



#4 2,4-DCAA

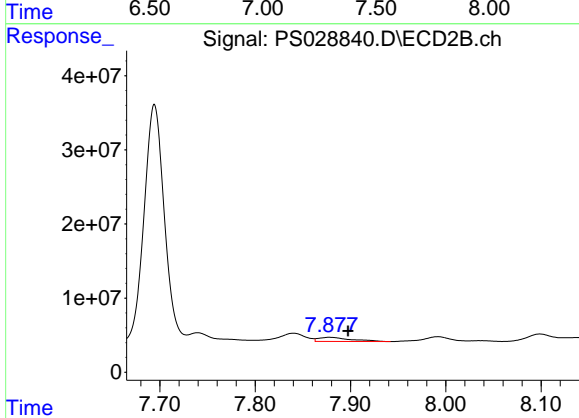
R.T.: 7.694 min  
 Delta R.T.: -0.005 min  
 Response: 466418280  
 Conc: 414.40 ng/ml



#5 DICAMBA

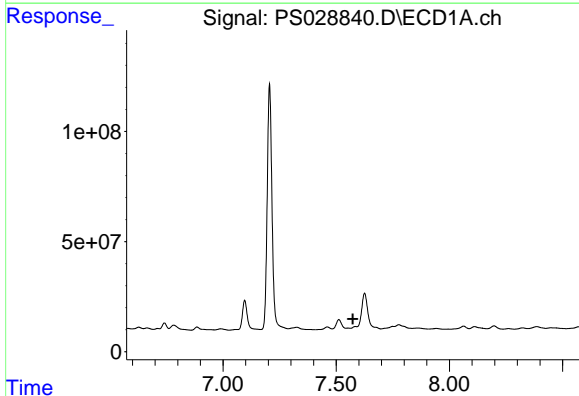
R.T.: 0.000 min  
 Exp R.T. : 7.396 min  
 Response: 0  
 Conc: N.D.

Instrument :  
 ECD\_S  
 ClientSampleId :  
 PB165858TB



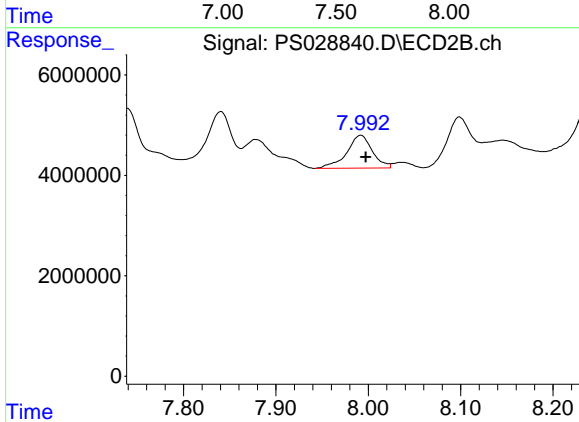
#5 DICAMBA

R.T.: 7.878 min  
 Delta R.T.: -0.019 min  
 Response: 13114956  
 Conc: 2.39 ng/ml



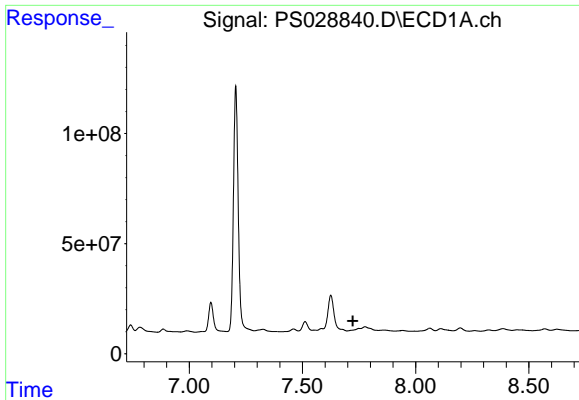
#6 MCP

R.T.: 0.000 min  
 Exp R.T. : 7.574 min  
 Response: 0  
 Conc: N.D.



#6 MCP

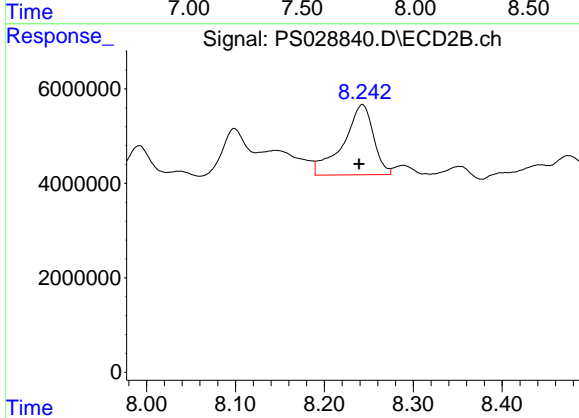
R.T.: 7.992 min  
 Delta R.T.: -0.006 min  
 Response: 12628669  
 Conc: 3.86 ug/ml



#7 MCPA

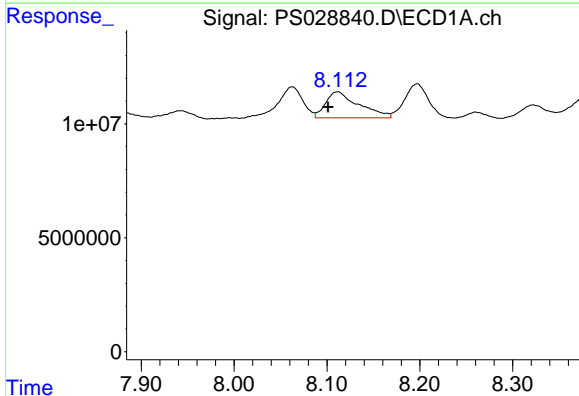
R.T.: 0.000 min  
 Exp R.T.: 7.723 min  
 Response: 0  
 Conc: N.D.

Instrument :  
 ECD\_S  
 ClientSampleId :  
 PB165858TB



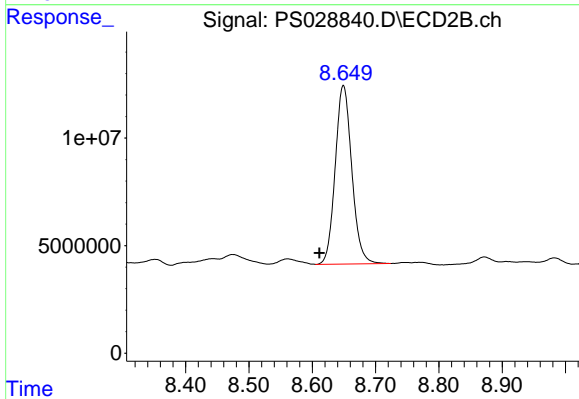
#7 MCPA

R.T.: 8.243 min  
 Delta R.T.: 0.003 min  
 Response: 35097773  
 Conc: 7.58 ug/ml



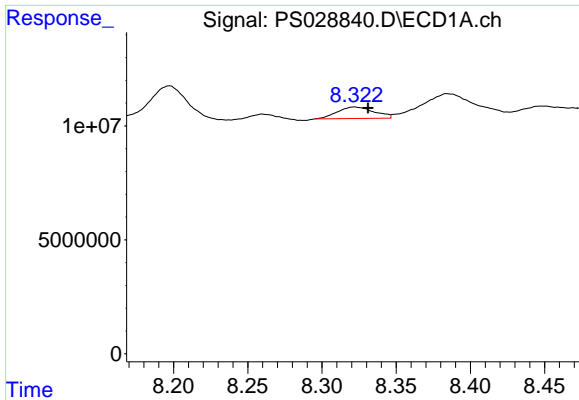
#8 DICHLORPROP

R.T.: 8.112 min  
 Delta R.T.: 0.011 min  
 Response: 28547726  
 Conc: 10.76 ng/ml



#8 DICHLORPROP

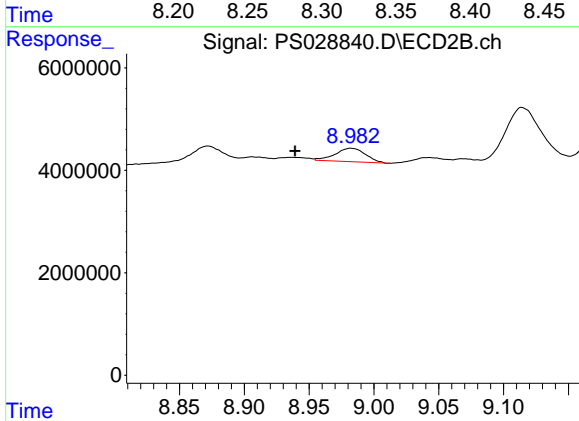
R.T.: 8.649 min  
 Delta R.T.: 0.038 min  
 Response: 150986342  
 Conc: 109.44 ng/ml



#9 2,4-D

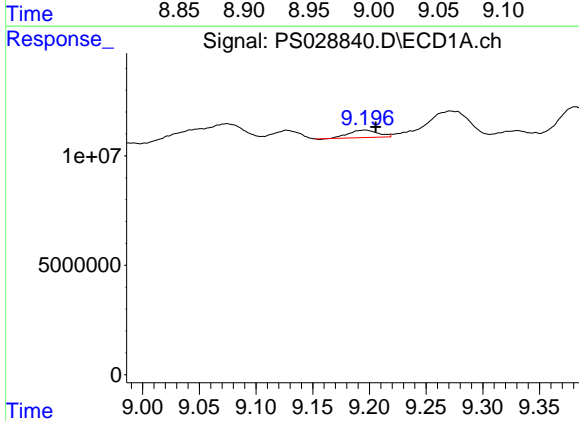
R.T.: 8.323 min  
 Delta R.T.: -0.008 min  
 Response: 8783280  
 Conc: 3.08 ng/ml

Instrument :  
 ECD\_S  
 ClientSampleId :  
 PB165858TB



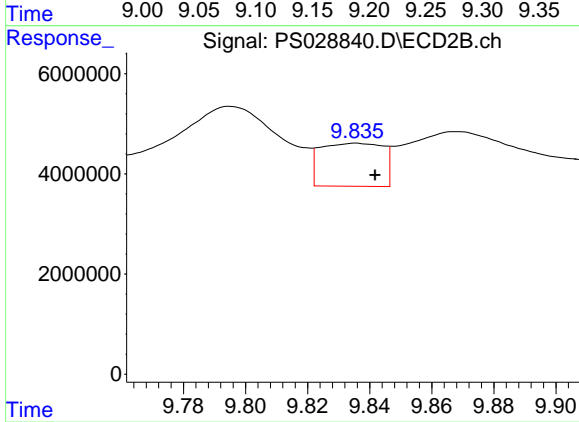
#9 2,4-D

R.T.: 8.982 min  
 Delta R.T.: 0.043 min  
 Response: 4250522  
 Conc: 2.95 ng/ml



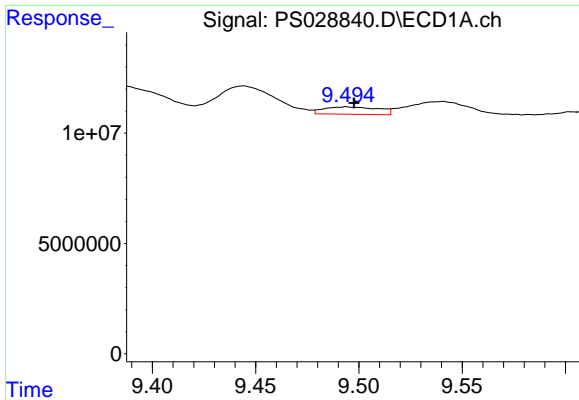
#11 2,4,5-TP (SILVEX)

R.T.: 9.195 min  
 Delta R.T.: -0.010 min  
 Response: 5978061  
 Conc: N.D.



#11 2,4,5-TP (SILVEX)

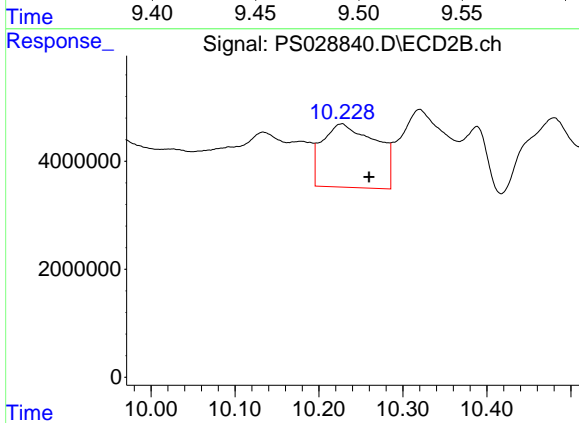
R.T.: 9.836 min  
 Delta R.T.: -0.006 min  
 Response: 12032799  
 Conc: 1.34 ng/ml



#12 2,4,5-T

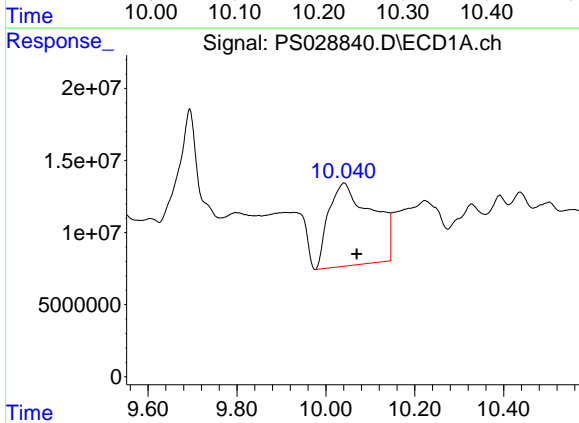
R.T.: 9.495 min  
 Delta R.T.: -0.003 min  
 Response: 6140406  
 Conc: N.D.

Instrument :  
 ECD\_S  
 ClientSampleId :  
 PB165858TB



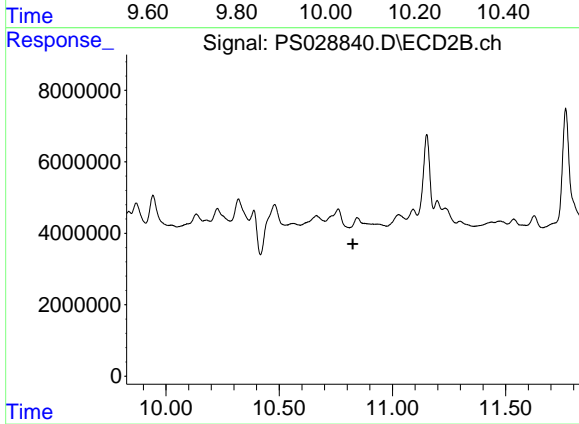
#12 2,4,5-T

R.T.: 10.227 min  
 Delta R.T.: -0.033 min  
 Response: 52375802  
 Conc: 6.01 ng/ml



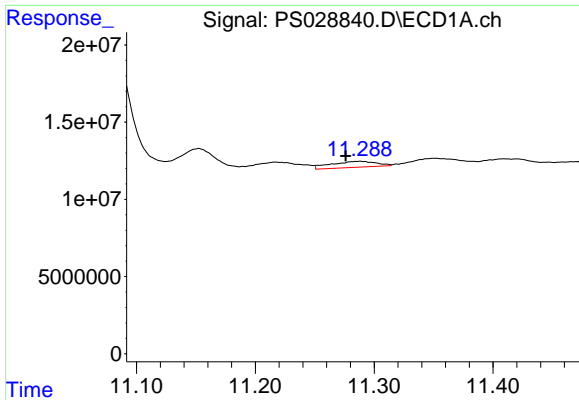
#13 2,4-DB

R.T.: 10.040 min  
 Delta R.T.: -0.029 min  
 Response: 389071394  
 Conc: 124.64 ng/ml



#13 2,4-DB

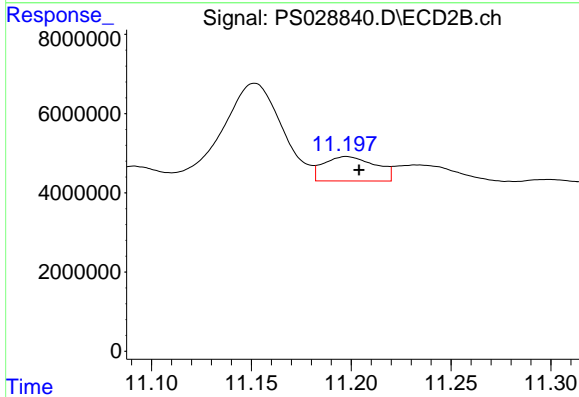
R.T.: 10.844 min  
 Delta R.T.: 0.019 min  
 Response: -12871023  
 Conc: N.D.



#14 DINOSEB

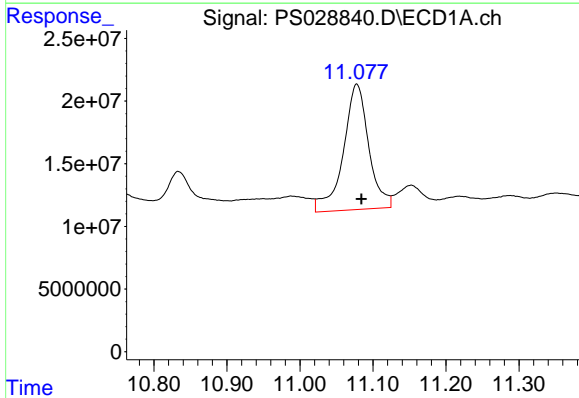
R.T.: 11.288 min  
 Delta R.T.: 0.012 min  
 Response: 10096645  
 Conc: N.D.

Instrument :  
 ECD\_S  
 ClientSampleId :  
 PB165858TB



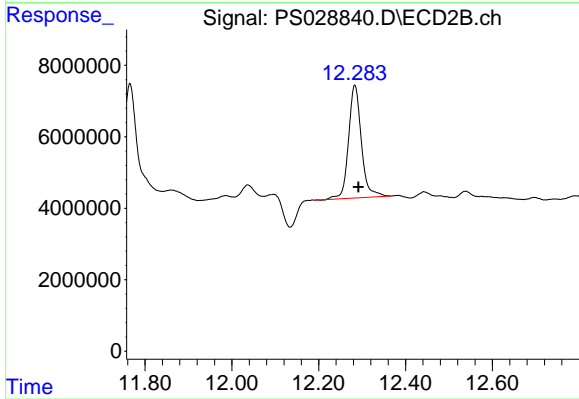
#14 DINOSEB

R.T.: 11.198 min  
 Delta R.T.: -0.006 min  
 Response: 11158627  
 Conc: 1.81 ng/ml



#15 Picloram

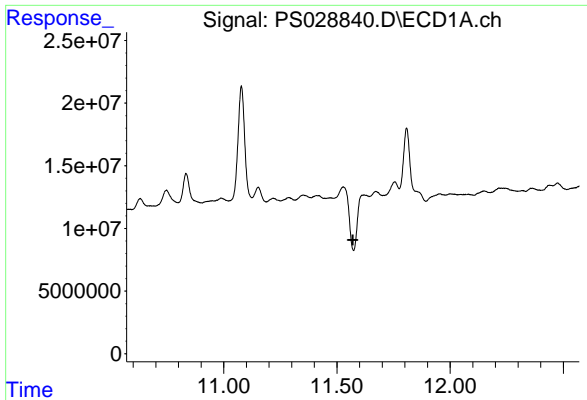
R.T.: 11.078 min  
 Delta R.T.: -0.006 min  
 Response: 242015329  
 Conc: 9.03 ng/ml



#15 Picloram

R.T.: 12.283 min  
 Delta R.T.: -0.009 min  
 Response: 64536152  
 Conc: 5.03 ng/ml

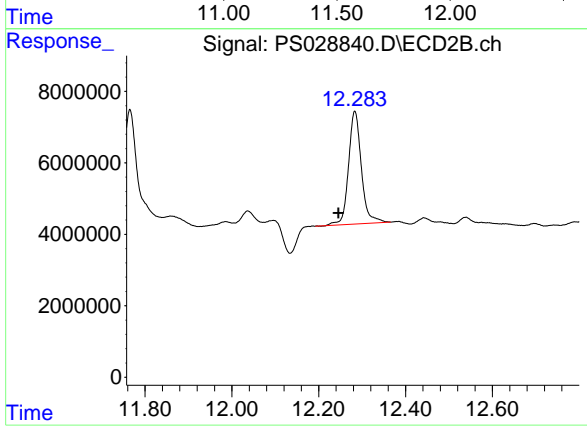




#16 DCPA

R.T.: 11.620 min  
 Delta R.T.: 0.050 min  
 Response: -99398122  
 Conc: N.D.

Instrument :  
 ECD\_S  
 ClientSampleId :  
 PB165858TB



#16 DCPA

R.T.: 12.283 min  
 Delta R.T.: 0.038 min  
 Response: 64536152  
 Conc: 6.01 ng/ml