

Data Path : Z:\pestpcbsrv\HPCHEM1\ECD_S\Data\PS122821\
 Data File : PS017846.D
 Signal(s) : Signal #1: ECD1A.ch Signal #2: ECD2B.ch
 Acq On : 28 Dec 2021 19:31
 Operator : AJ\MA
 Sample : M5230-07
 Misc :
 ALS Vial : 9 Sample Multiplier: 1

Instrument :
 ECD_S
 ClientSampleId :
 PSC164718

Integration File signal 1: autoint1.e
 Integration File signal 2: autoint2.e
 Quant Time: Dec 29 01:04:22 2021
 Quant Method : Z:\pestpcbsrv\HPCHEM1\ECD_S\Method\PS121421.M
 Quant Title : 8080.M
 QLast Update : Tue Dec 14 13:29:21 2021
 Response via : Initial Calibration
 Integrator: ChemStation

Volume Inj. : 2 µl
 Signal #1 Phase : Rtx-CLPesticides Signal #2 Phase: Rtx-CLPesticides2
 Signal #1 Info : 30M x 0.32mm x0.5 Signal #2 Info : 30M x 0.32mm x 0.25µm

Compound	RT#1	RT#2	Resp#1	Resp#2	ng/ml	ng/ml

System Monitoring Compounds						
4) S 2,4-DCAA	7.123	6.712	1119.9E6	493.4E6	716.561	827.652

Target Compounds

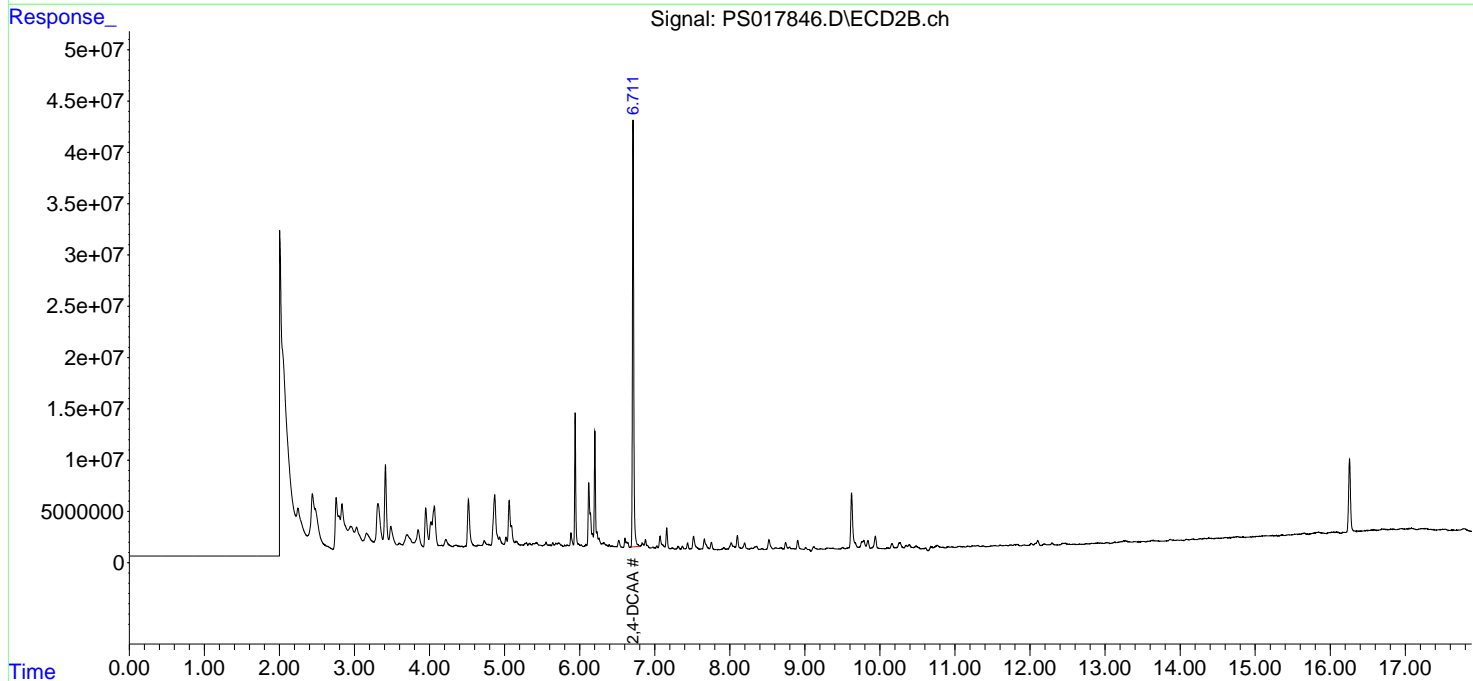
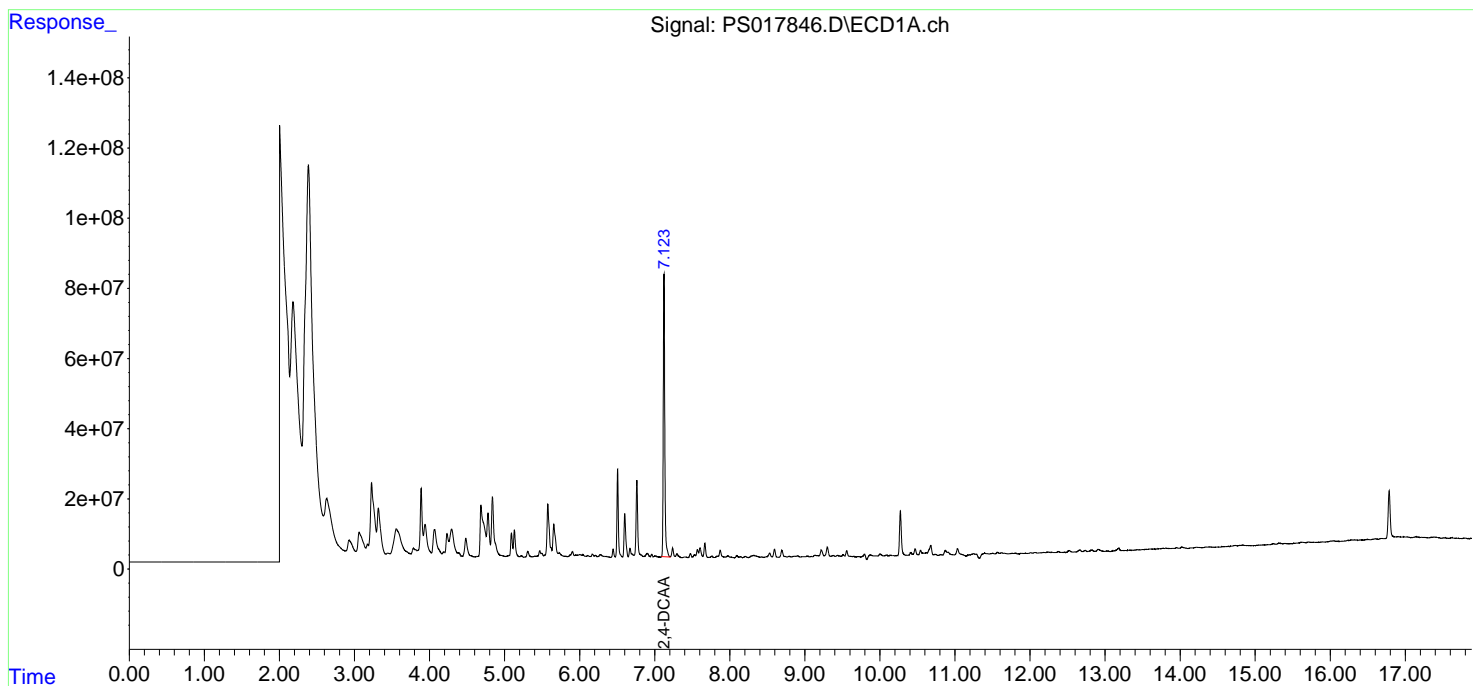
(f)=RT Delta > 1/2 Window (#)=Amounts differ by > 25% (m)=manual int.

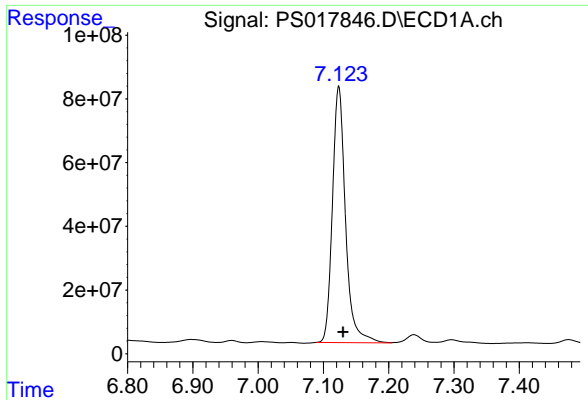
Data Path : Z:\pestpcbsrv\HPCHEM1\ECD_S\Data\PS122821\
 Data File : PS017846.D
 Signal(s) : Signal #1: ECD1A.ch Signal #2: ECD2B.ch
 Acq On : 28 Dec 2021 19:31
 Operator : AJ\MA
 Sample : M5230-07
 Misc :
 ALS Vial : 9 Sample Multiplier: 1

Instrument :
 ECD_S
 ClientSampleId :
 PSC164718

Integration File signal 1: autoint1.e
 Integration File signal 2: autoint2.e
 Quant Time: Dec 29 01:04:22 2021
 Quant Method : Z:\pestpcbsrv\HPCHEM1\ECD_S\Method\PS121421.M
 Quant Title : 8080.M
 QLast Update : Tue Dec 14 13:29:21 2021
 Response via : Initial Calibration
 Integrator: ChemStation

Volume Inj. : 2 µl
 Signal #1 Phase : Rtx-CLPesticides Signal #2 Phase: Rtx-CLPesticides2
 Signal #1 Info : 30M x 0.32mm x0.5 Signal #2 Info : 30M x 0.32mm x 0.25µm

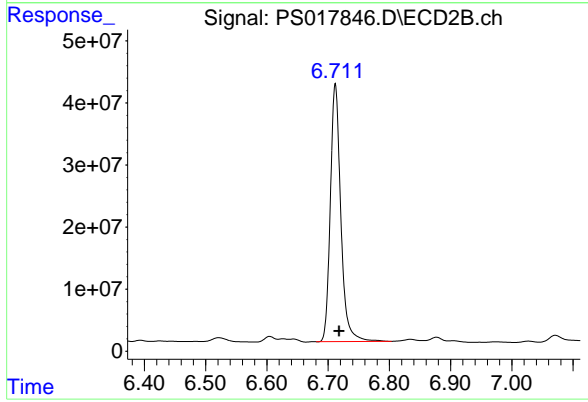




#4 2,4-DCAA

R.T.: 7.123 min
Delta R.T.: -0.006 min
Response: 1119946169
Conc: 716.56 ng/ml

Instrument :
ECD_S
ClientSampleId :
PSC164718



#4 2,4-DCAA

R.T.: 6.712 min
Delta R.T.: -0.006 min
Response: 493364942
Conc: 827.65 ng/ml