

Data Path : Z:\pestpcbsrv\HPCHEM1\ECD_S\Data\PS122823\
 Data File : PS025253.D
 Signal(s) : Signal #1: ECD1A.ch Signal #2: ECD2B.ch
 Acq On : 28 Dec 2023 15:25
 Operator : AR\AJ
 Sample : HSTDICC1500
 Misc :
 ALS Vial : 7 Sample Multiplier: 1

Instrument :
 ECD_S
 ClientSampleId :
 HSTDICC1500

Integration File signal 1: autoint1.e
 Integration File signal 2: autoint2.e
 Quant Time: Dec 28 17:15:45 2023
 Quant Method : Z:\pestpcbsrv\HPCHEM1\ECD_S\Method\PS122823.M
 Quant Title : 8080.M
 QLast Update : Thu Dec 28 17:12:20 2023
 Response via : Initial Calibration
 Integrator: ChemStation

Volume Inj. : 2 µl
 Signal #1 Phase : Rtx-CLPesticides Signal #2 Phase: Rtx-CLPesticides2
 Signal #1 Info : 30M x 0.32mm x0.5 Signal #2 Info : 30M x 0.32mm x 0.25µm

Compound	RT#1	RT#2	Resp#1	Resp#2	ng/ml	ng/ml

System Monitoring Compounds						
4) S 2,4-DCAA	6.351	6.762	3033.9E6	1000.5E6	1453.012	1474.459
Target Compounds						
1) T Dalapon	2.467	2.524	3908.5E6	1518.3E6	1329.550	1351.920
2) T 3,5-DICHL...	5.727	5.954	4303.5E6	1483.3E6	1350.102	1373.597
3) T 4-Nitroph...	6.189	6.379	2031.3E6	644.1E6	1357.523	1350.072
5) T DICAMBA	6.492	6.922	12666.8E6	4107.6E6	1364.782	1390.787
6) T MCPP	6.647	7.024	1015.2E6	296.5E6	144.586	144.082
7) T MCPA	6.770	7.230	1354.1E6	431.9E6	141.151	139.840
8) T DICHLORPROP	7.078	7.535	3301.9E6	1022.6E6	1369.204	1387.569
9) T 2,4-D	7.275	7.817	3970.2E6	1283.3E6	1368.077	1386.964
10) T Pentachlo...	7.505	8.240	37997.4E6	14385.1E6	1219.387	1364.622
11) T 2,4,5-TP ...	8.025	8.598	19486.6E6	5819.6E6	1364.477	1392.593
12) T 2,4,5-T	8.281	8.967	19068.8E6	5795.7E6	1361.674	1397.399
13) T 2,4-DB	8.785	9.469	3282.1E6	761.0E6	1407.302	1417.957
14) T DINOSEB	9.837	9.797	14696.1E6	4246.4E6	1360.999	1384.767
15) T Picloram	9.663	10.746	28195.2E6	9537.9E6	1396.216	1408.823
16) T DCPA	10.103	10.718	23904.2E6	7064.7E6	1364.289	1400.381

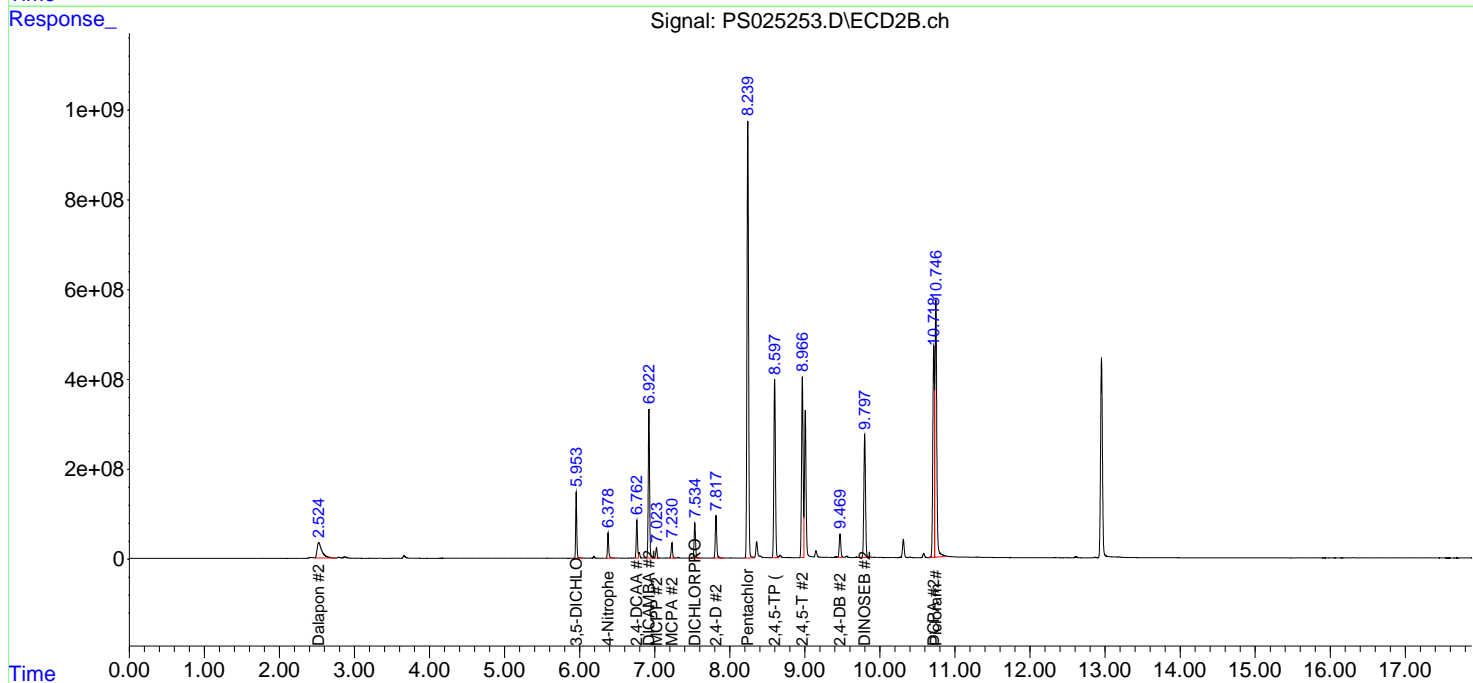
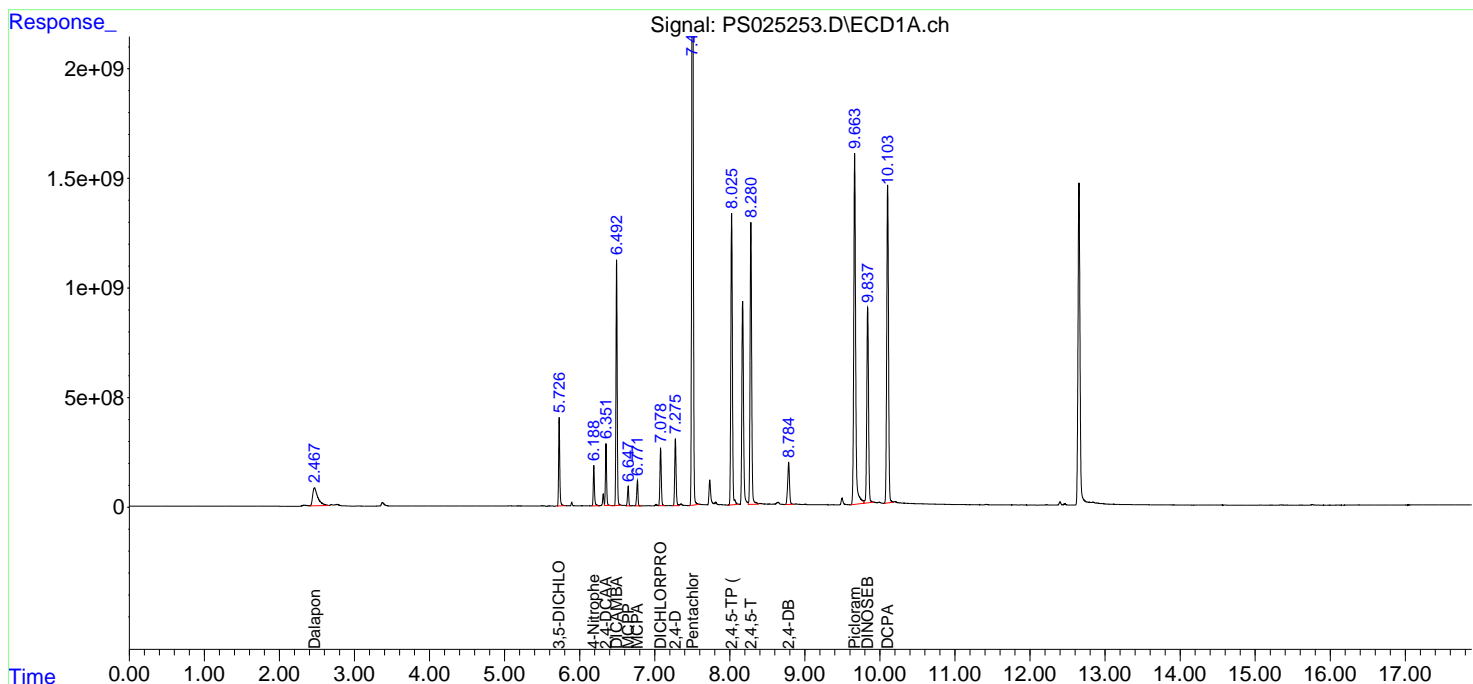
(f)=RT Delta > 1/2 Window (#)=Amounts differ by > 25% (m)=manual int.

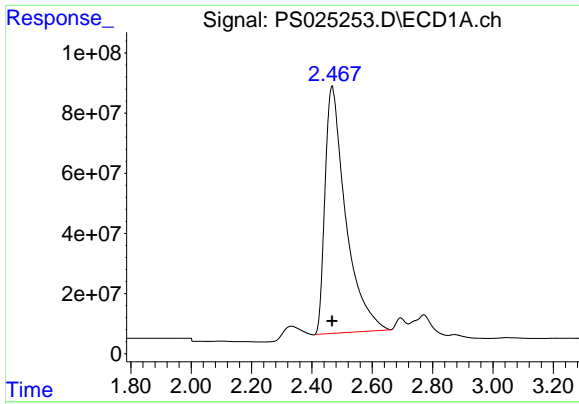
Data Path : Z:\pestpcbsrv\HPCHEM1\ECD_S\Data\PS122823\
 Data File : PS025253.D
 Signal(s) : Signal #1: ECD1A.ch Signal #2: ECD2B.ch
 Acq On : 28 Dec 2023 15:25
 Operator : AR\AJ
 Sample : HSTDICC1500
 Misc :
 ALS Vial : 7 Sample Multiplier: 1

Instrument :
 ECD_S
 ClientSampleId :
 HSTDICC1500

Integration File signal 1: autoint1.e
 Integration File signal 2: autoint2.e
 Quant Time: Dec 28 17:15:45 2023
 Quant Method : Z:\pestpcbsrv\HPCHEM1\ECD_S\Method\PS122823.M
 Quant Title : 8080.M
 QLast Update : Thu Dec 28 17:12:20 2023
 Response via : Initial Calibration
 Integrator: ChemStation

Volume Inj. : 2 µl
 Signal #1 Phase : Rtx-CLPesticides Signal #2 Phase: Rtx-CLPesticides2
 Signal #1 Info : 30M x 0.32mm x0.5 Signal #2 Info : 30M x 0.32mm x 0.25µm

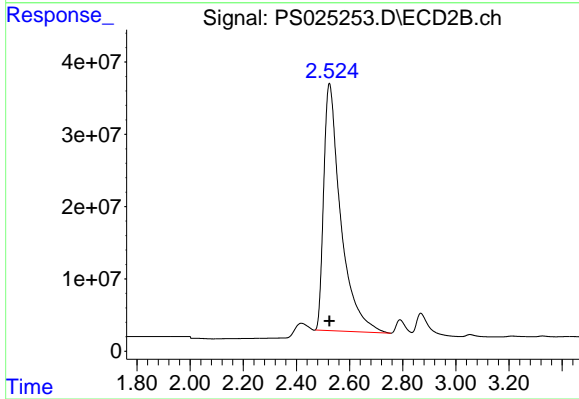




#1 Dalapon

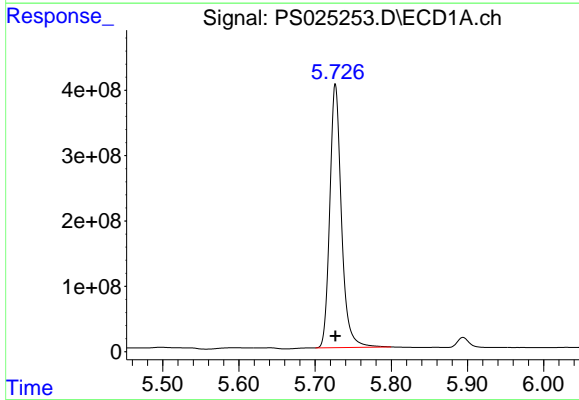
R.T.: 2.467 min
 Delta R.T.: 0.000 min
 Response: 3908499110
 Conc: 1329.55 ng/ml

Instrument :
 ECD_S
 ClientSampleId :
 HSTDICC1500



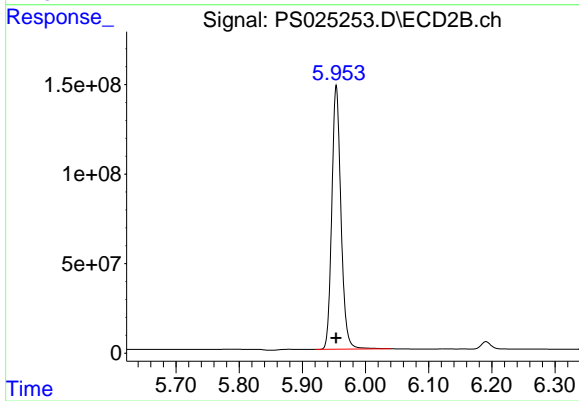
#1 Dalapon

R.T.: 2.524 min
 Delta R.T.: 0.000 min
 Response: 1518305601
 Conc: 1351.92 ng/ml



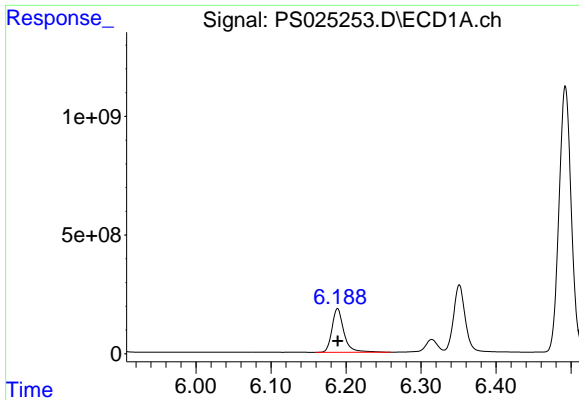
#2 3,5-DICHLOROBENZOIC ACID

R.T.: 5.727 min
 Delta R.T.: 0.000 min
 Response: 4303477559
 Conc: 1350.10 ng/ml



#2 3,5-DICHLOROBENZOIC ACID

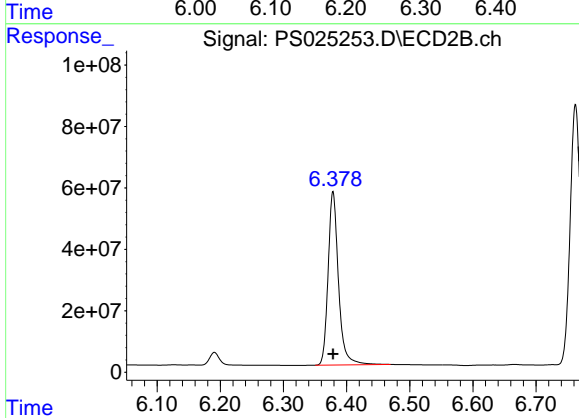
R.T.: 5.954 min
 Delta R.T.: 0.000 min
 Response: 1483308929
 Conc: 1373.60 ng/ml



#3 4-Nitrophenol

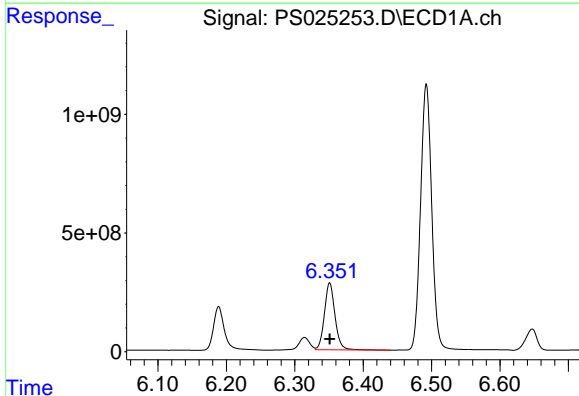
R.T.: 6.189 min
 Delta R.T.: 0.000 min
 Response: 2031283406
 Conc: 1357.52 ng/m

Instrument :
 ECD_S
 ClientSampleId :
 HSTDICC1500



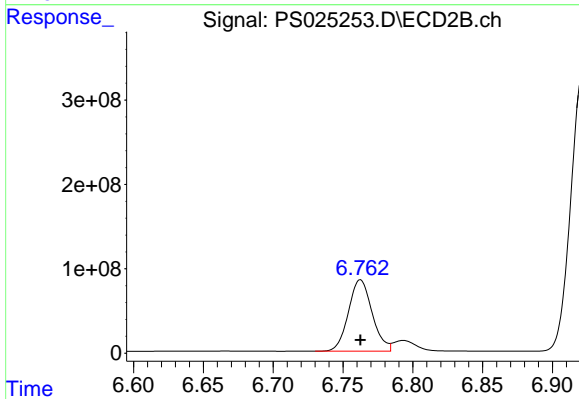
#3 4-Nitrophenol

R.T.: 6.379 min
 Delta R.T.: 0.000 min
 Response: 644144984
 Conc: 1350.07 ng/ml



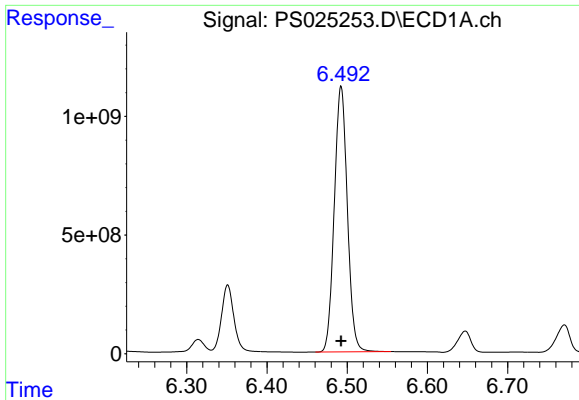
#4 2,4-DCAA

R.T.: 6.351 min
 Delta R.T.: 0.000 min
 Response: 3033907392
 Conc: 1453.01 ng/ml



#4 2,4-DCAA

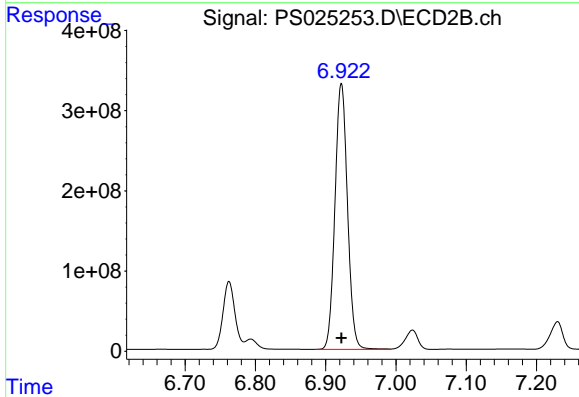
R.T.: 6.762 min
 Delta R.T.: 0.000 min
 Response: 1000475640
 Conc: 1474.46 ng/ml



#5 DICAMBA

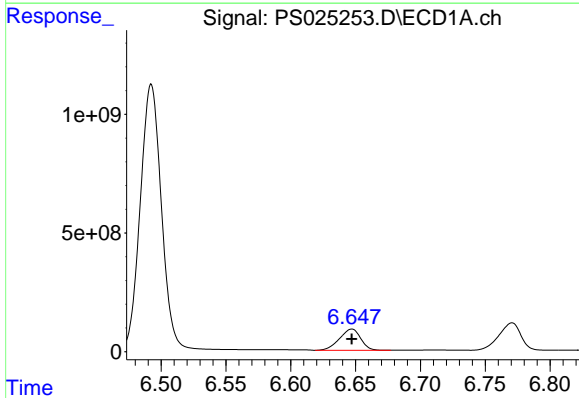
R.T.: 6.492 min
 Delta R.T.: 0.000 min
 Response: 12666844570
 Conc: 1364.78 ng/m

Instrument :
 ECD_S
 ClientSampleId :
 HSTDICC1500



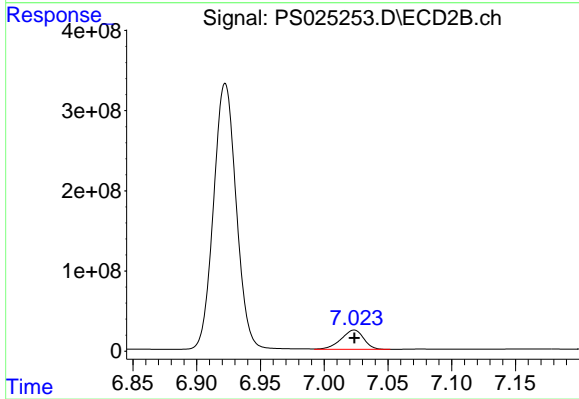
#5 DICAMBA

R.T.: 6.922 min
 Delta R.T.: 0.000 min
 Response: 4107634093
 Conc: 1390.79 ng/ml



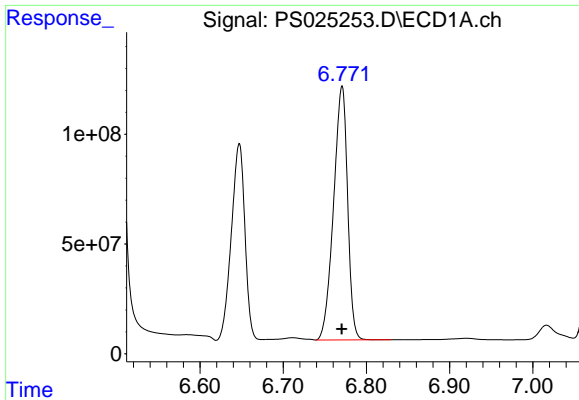
#6 MCP

R.T.: 6.647 min
 Delta R.T.: 0.000 min
 Response: 1015195219
 Conc: 144.59 ug/ml



#6 MCP

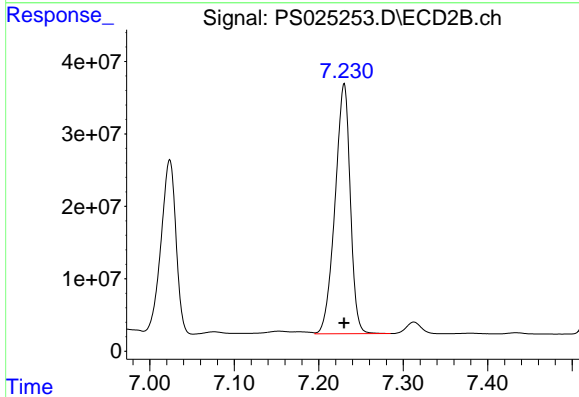
R.T.: 7.024 min
 Delta R.T.: 0.000 min
 Response: 296476524
 Conc: 144.08 ug/ml



#7 MCPA

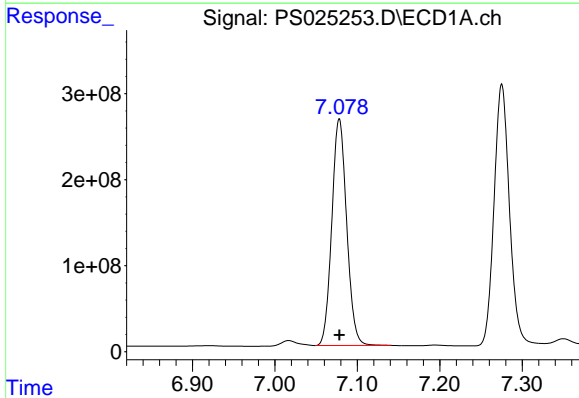
R.T.: 6.770 min
 Delta R.T.: 0.000 min
 Response: 1354071023
 Conc: 141.15 ug/ml

Instrument :
 ECD_S
 ClientSampleId :
 HSTDICC1500



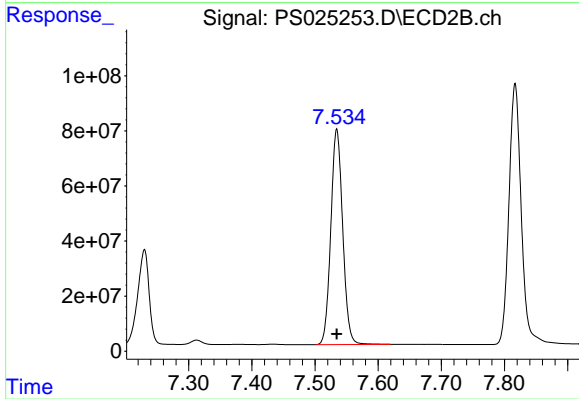
#7 MCPA

R.T.: 7.230 min
 Delta R.T.: 0.000 min
 Response: 431903681
 Conc: 139.84 ug/ml



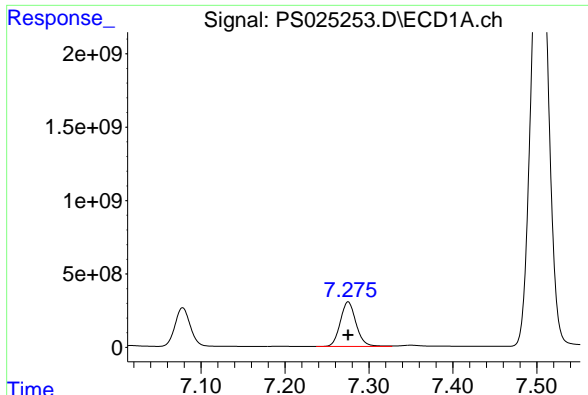
#8 DICHLORPROP

R.T.: 7.078 min
 Delta R.T.: 0.000 min
 Response: 3301925934
 Conc: 1369.20 ng/ml



#8 DICHLORPROP

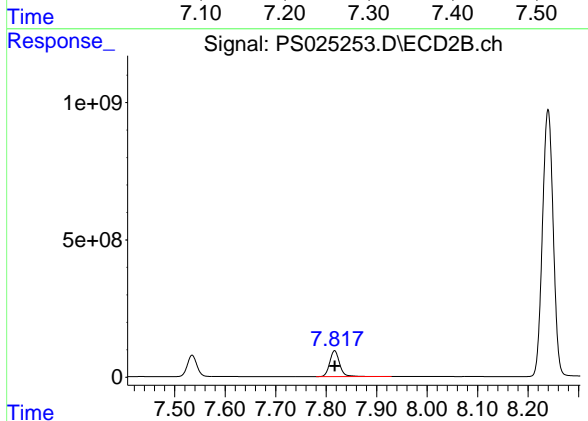
R.T.: 7.535 min
 Delta R.T.: 0.000 min
 Response: 1022587282
 Conc: 1387.57 ng/ml



#9 2,4-D

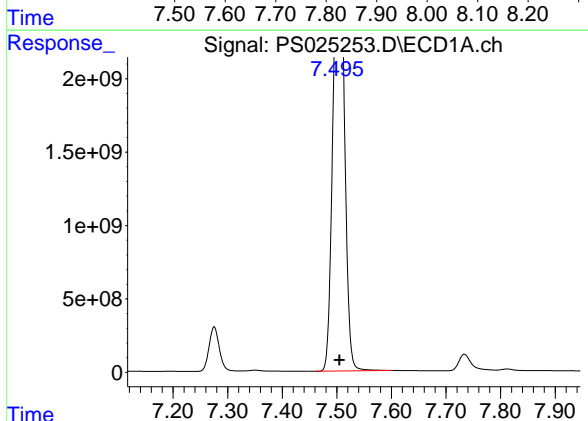
R.T.: 7.275 min
 Delta R.T.: 0.000 min
 Response: 3970191503
 Conc: 1368.08 ng/m

Instrument :
 ECD_S
 ClientSampleId :
 HSTDICC1500



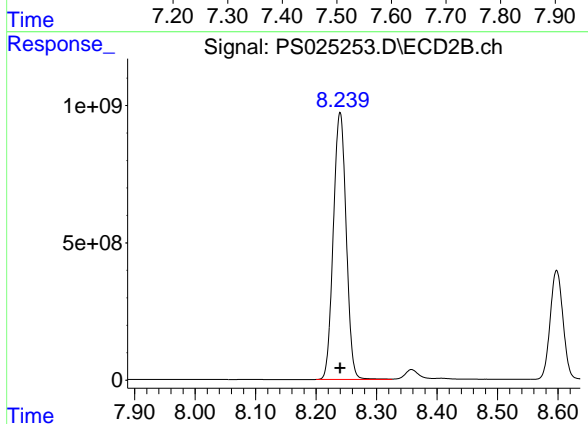
#9 2,4-D

R.T.: 7.817 min
 Delta R.T.: 0.000 min
 Response: 1283308562
 Conc: 1386.96 ng/ml



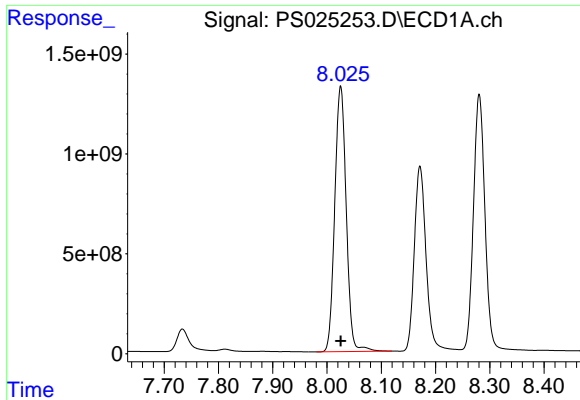
#10 Pentachlorophenol

R.T.: 7.505 min
 Delta R.T.: 0.000 min
 Response: 37997355921
 Conc: 1219.39 ng/ml



#10 Pentachlorophenol

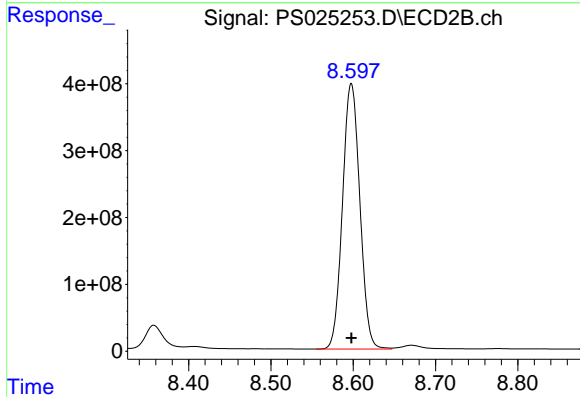
R.T.: 8.240 min
 Delta R.T.: 0.000 min
 Response: 14385103025
 Conc: 1364.62 ng/ml



#11 2,4,5-TP (SILVEX)

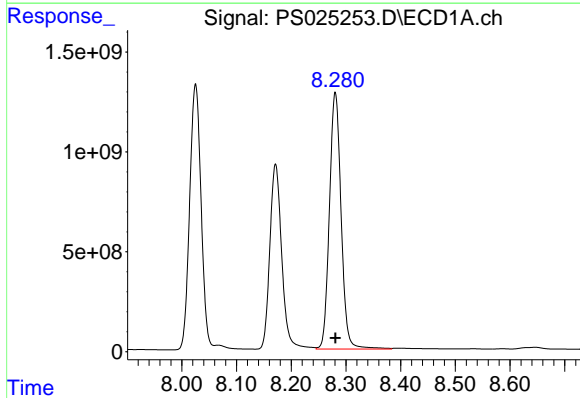
R.T.: 8.025 min
 Delta R.T.: 0.000 min
 Response: 19486633545
 Conc: 1364.48 ng/m

Instrument :
 ECD_S
 ClientSampleId :
 HSTDICC1500



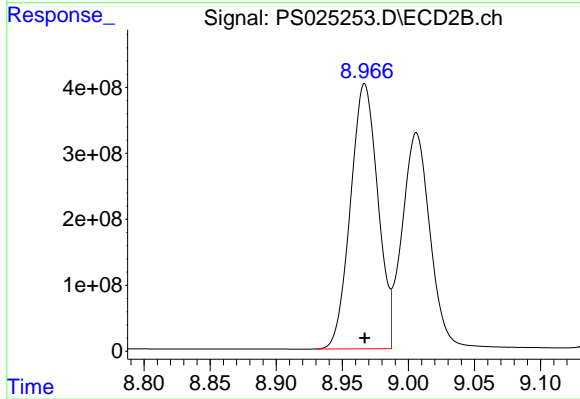
#11 2,4,5-TP (SILVEX)

R.T.: 8.598 min
 Delta R.T.: 0.000 min
 Response: 5819649299
 Conc: 1392.59 ng/ml



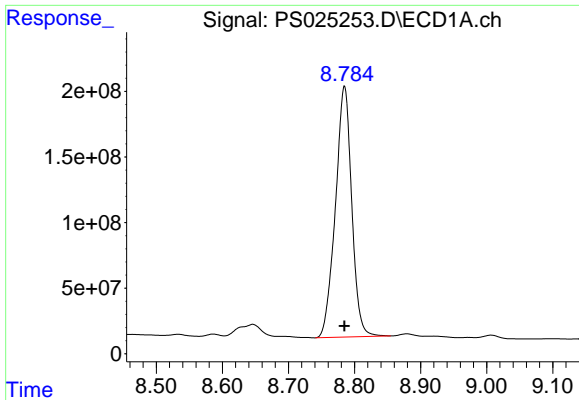
#12 2,4,5-T

R.T.: 8.281 min
 Delta R.T.: 0.000 min
 Response: 19068849372
 Conc: 1361.67 ng/ml



#12 2,4,5-T

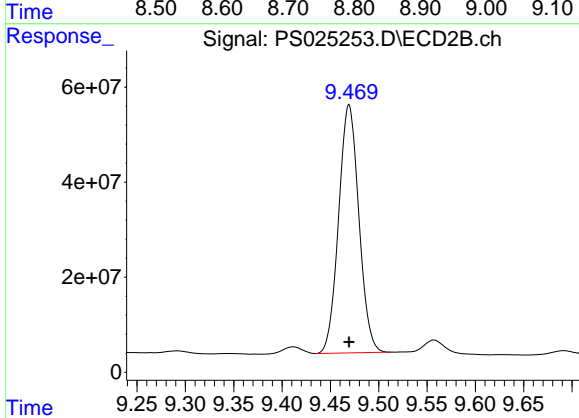
R.T.: 8.967 min
 Delta R.T.: 0.000 min
 Response: 5795719496
 Conc: 1397.40 ng/ml



#13 2,4-DB

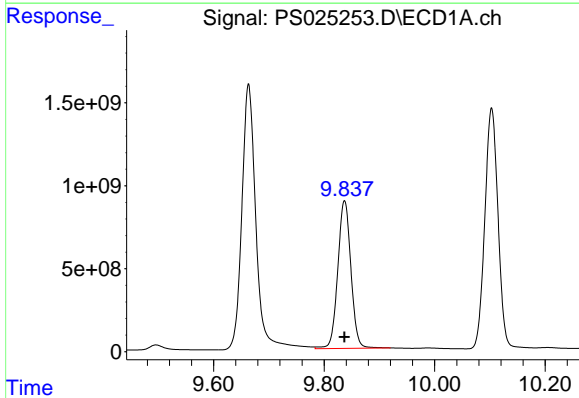
R.T.: 8.785 min
Delta R.T.: 0.000 min
Response: 3282095882
Conc: 1407.30 ng/ml

Instrument :
ECD_S
ClientSampleId :
HSTDICC1500



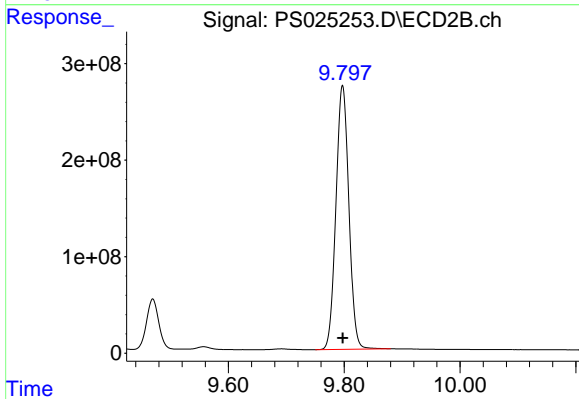
#13 2,4-DB

R.T.: 9.469 min
Delta R.T.: 0.000 min
Response: 761020368
Conc: 1417.96 ng/ml



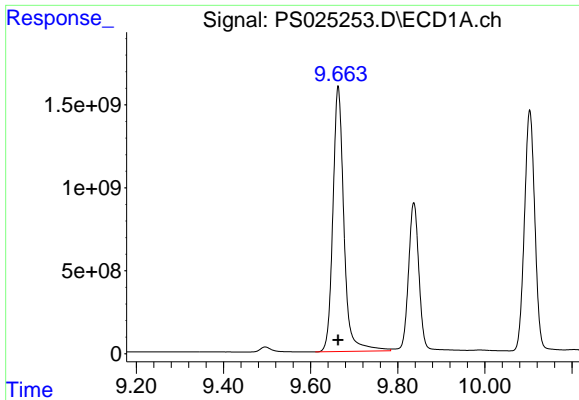
#14 DINOSEB

R.T.: 9.837 min
Delta R.T.: 0.000 min
Response: 14696116542
Conc: 1361.00 ng/ml



#14 DINOSEB

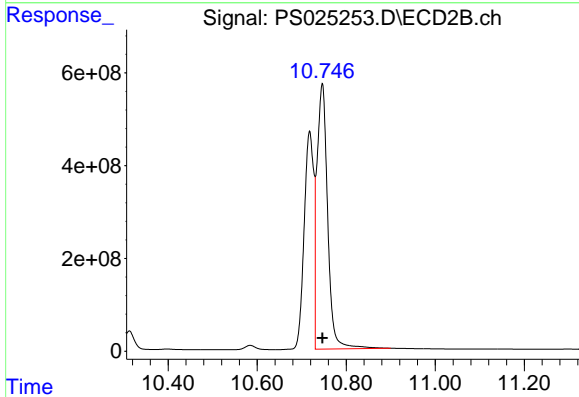
R.T.: 9.797 min
Delta R.T.: 0.000 min
Response: 4246360915
Conc: 1384.77 ng/ml



#15 Picloram

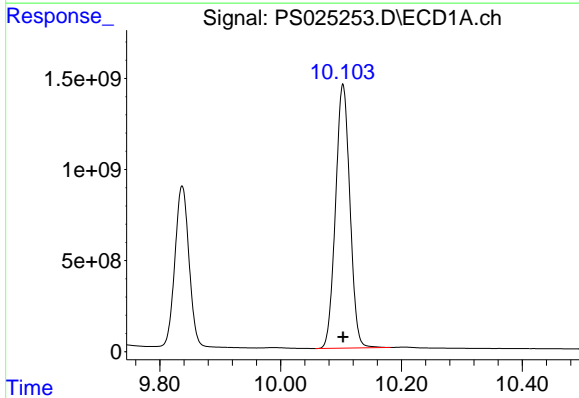
R.T.: 9.663 min
 Delta R.T.: 0.000 min
 Response: 28195214006
 Conc: 1396.22 ng/ml

Instrument :
 ECD_S
 ClientSampleId :
 HSTDICC1500



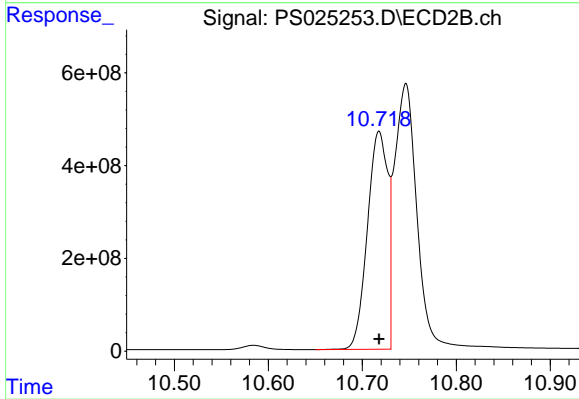
#15 Picloram

R.T.: 10.746 min
 Delta R.T.: 0.000 min
 Response: 9537864549
 Conc: 1408.82 ng/ml



#16 DCPA

R.T.: 10.103 min
 Delta R.T.: 0.000 min
 Response: 23904189565
 Conc: 1364.29 ng/ml



#16 DCPA

R.T.: 10.718 min
 Delta R.T.: 0.000 min
 Response: 7064748357
 Conc: 1400.38 ng/ml