

Data Path : Z:\pestpcbsrv\HPCHEM1\ECD_S\Data\PS122823\
 Data File : PS025292.D
 Signal(s) : Signal #1: ECD1A.ch Signal #2: ECD2B.ch
 Acq On : 29 Dec 2023 08:19
 Operator : AR\AJ
 Sample : HSTDCCC750
 Misc :
 ALS Vial : 5 Sample Multiplier: 1

Instrument :
 ECD_S
 ClientSampleId :
 HSTDCCC750

Integration File signal 1: autoint1.e
 Integration File signal 2: autoint2.e
 Quant Time: Dec 29 23:34:33 2023
 Quant Method : Z:\pestpcbsrv\HPCHEM1\ECD_S\Method\PS122823.M
 Quant Title : 8080.M
 QLast Update : Thu Dec 28 17:23:18 2023
 Response via : Initial Calibration
 Integrator: ChemStation

Volume Inj. : 2 µl
 Signal #1 Phase : Rtx-CLPesticides Signal #2 Phase: Rtx-CLPesticides2
 Signal #1 Info : 30M x 0.32mm x0.5 Signal #2 Info : 30M x 0.32mm x 0.25µm

Compound	RT#1	RT#2	Resp#1	Resp#2	ng/ml	ng/ml

System Monitoring Compounds						
4) S 2,4-DCAA	6.351	6.762	1652.5E6	530.7E6	737.448	747.717
Target Compounds						
1) T Dalapon	2.469	2.527	1986.6E6	748.3E6	641.973	651.073
2) T 3,5-DICHL...	5.726	5.954	2351.9E6	786.5E6	691.535	703.205
3) T 4-Nitroph...	6.189	6.378	1052.4E6	334.7E6	679.353	673.877
5) T DICAMBA	6.492	6.922	6934.9E6	2168.1E6	710.780	716.303
6) T MCPP	6.643	7.019	497.5E6	145.4E6	73.951	72.864
7) T MCPA	6.765	7.224	679.1E6	219.7E6	71.604	69.904
8) T DICHLORPROP	7.078	7.534	1795.1E6	541.2E6	697.796	699.664
9) T 2,4-D	7.275	7.816	2151.8E6	675.9E6	694.616	704.712
10) T Pentachlo...	7.503	8.238	26060.7E6	8027.3E6	739.310	724.083
11) T 2,4,5-TP ...	8.024	8.597	10948.9E6	3112.7E6	720.438	719.891
12) T 2,4,5-T	8.280	8.966	10617.8E6	3079.2E6	707.914	721.458
13) T 2,4-DB	8.784	9.468	1735.7E6	394.3E6	719.801	718.867
14) T DINOSEB	9.836	9.796	7885.3E6	2185.1E6	686.012	687.998
15) T Picloram	9.664	10.745	14622.0E6	4768.9E6	699.862	699.933
16) T DCPA	10.102	10.716	13645.9E6	3870.2E6	718.067	724.722

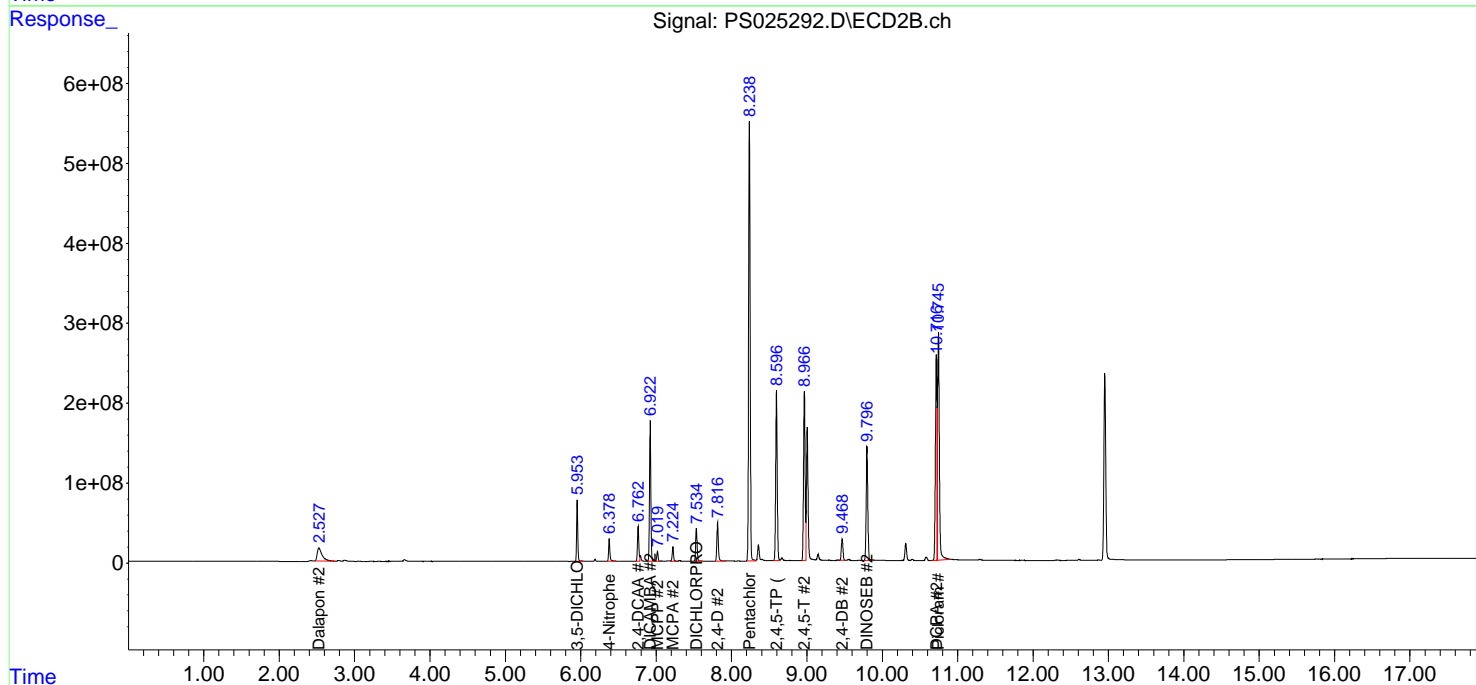
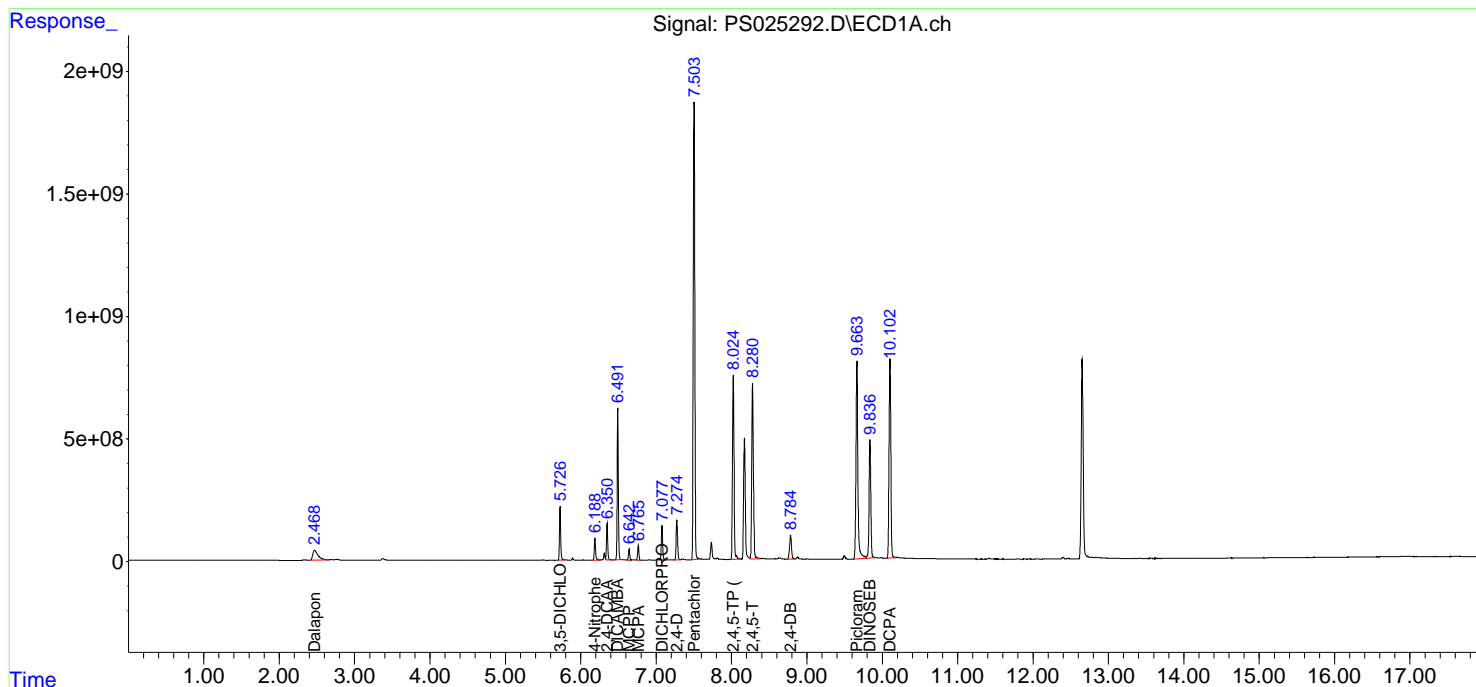
(f)=RT Delta > 1/2 Window (#)=Amounts differ by > 25% (m)=manual int.

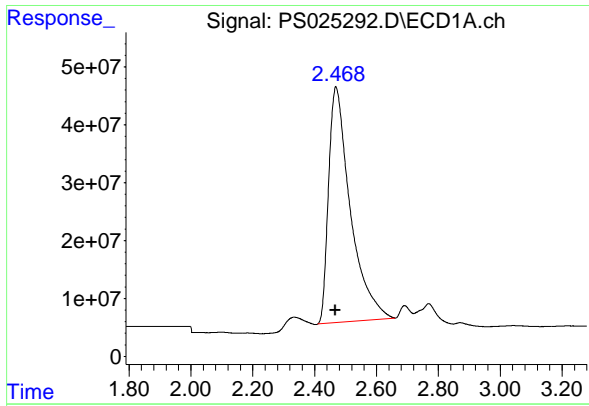
Data Path : Z:\pestpcbsrv\HPCHEM1\ECD_S\Data\PS122823\
 Data File : PS025292.D
 Signal(s) : Signal #1: ECD1A.ch Signal #2: ECD2B.ch
 Acq On : 29 Dec 2023 08:19
 Operator : AR\AJ
 Sample : HSTDCCC750
 Misc :
 ALS Vial : 5 Sample Multiplier: 1

Instrument :
 ECD_S
 ClientSampleId :
 HSTDCCC750

Integration File signal 1: autoint1.e
 Integration File signal 2: autoint2.e
 Quant Time: Dec 29 23:34:33 2023
 Quant Method : Z:\pestpcbsrv\HPCHEM1\ECD_S\Method\PS122823.M
 Quant Title : 8080.M
 QLast Update : Thu Dec 28 17:23:18 2023
 Response via : Initial Calibration
 Integrator: ChemStation

Volume Inj. : 2 µl
 Signal #1 Phase : Rtx-CLPesticides Signal #2 Phase: Rtx-CLPesticides2
 Signal #1 Info : 30M x 0.32mm x0.5 Signal #2 Info : 30M x 0.32mm x 0.25µm

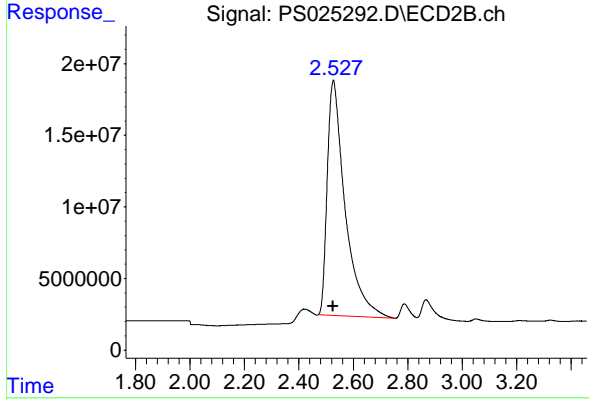




#1 Dalapon

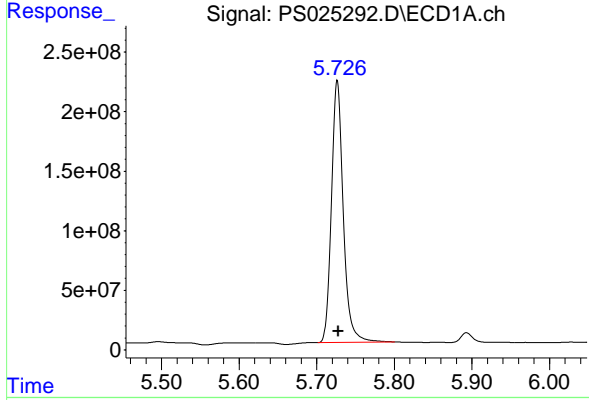
R.T.: 2.469 min
 Delta R.T.: 0.002 min
 Response: 1986610126
 Conc: 641.97 ng/ml

Instrument : ECD_S
 ClientSampleId : HSTDCCC750



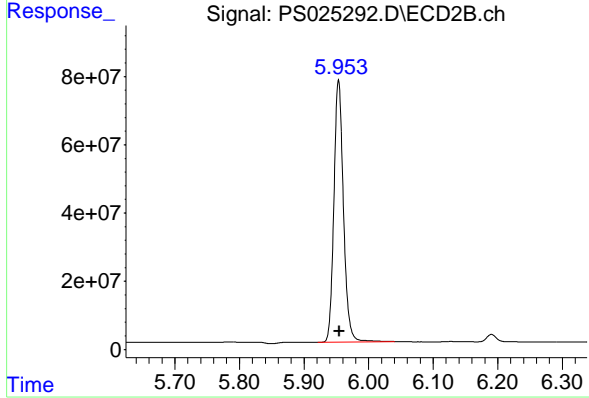
#1 Dalapon

R.T.: 2.527 min
 Delta R.T.: 0.001 min
 Response: 748289485
 Conc: 651.07 ng/ml



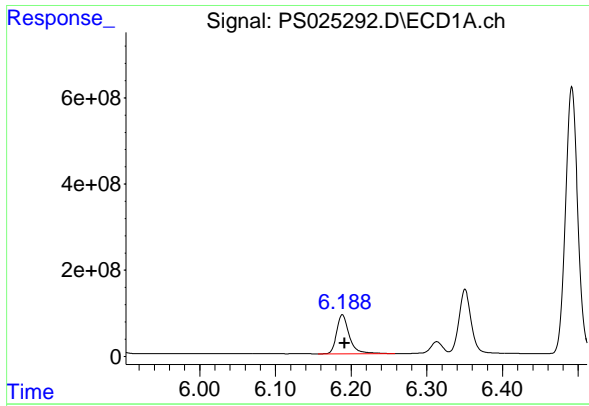
#2 3,5-DICHLOROBENZOIC ACID

R.T.: 5.726 min
 Delta R.T.: -0.001 min
 Response: 2351914355
 Conc: 691.54 ng/ml



#2 3,5-DICHLOROBENZOIC ACID

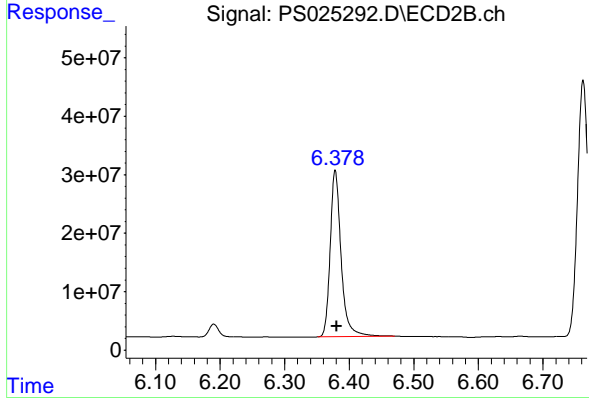
R.T.: 5.954 min
 Delta R.T.: 0.000 min
 Response: 786493098
 Conc: 703.20 ng/ml



#3 4-Nitrophenol

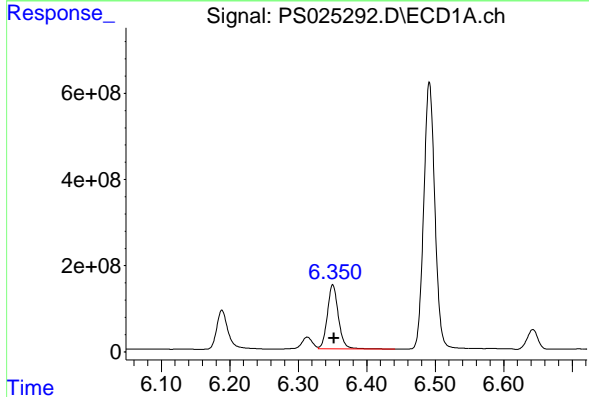
R.T.: 6.189 min
 Delta R.T.: -0.003 min
 Response: 1052404350
 Conc: 679.35 ng/ml

Instrument :
 ECD_S
 ClientSampleId :
 HSTDCCC750



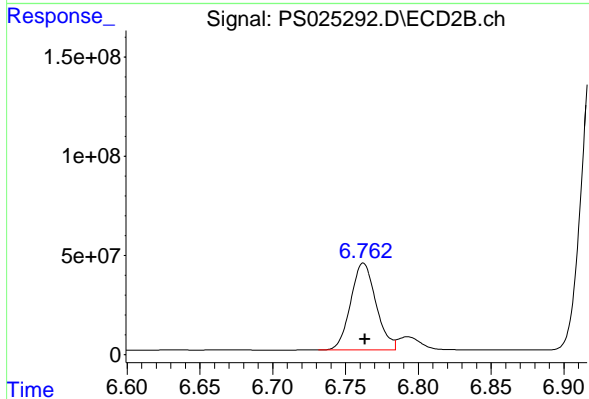
#3 4-Nitrophenol

R.T.: 6.378 min
 Delta R.T.: -0.002 min
 Response: 334736019
 Conc: 673.88 ng/ml



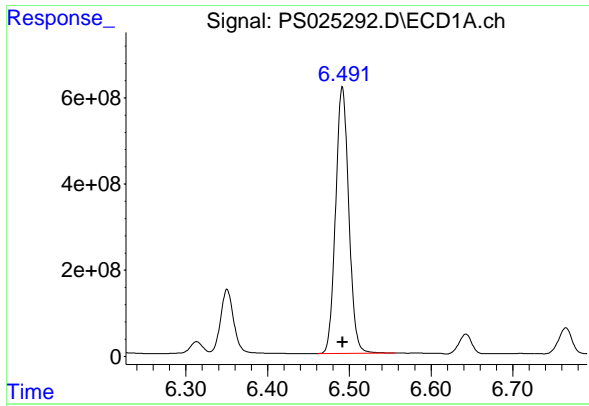
#4 2,4-DCAA

R.T.: 6.351 min
 Delta R.T.: -0.002 min
 Response: 1652475172
 Conc: 737.45 ng/ml



#4 2,4-DCAA

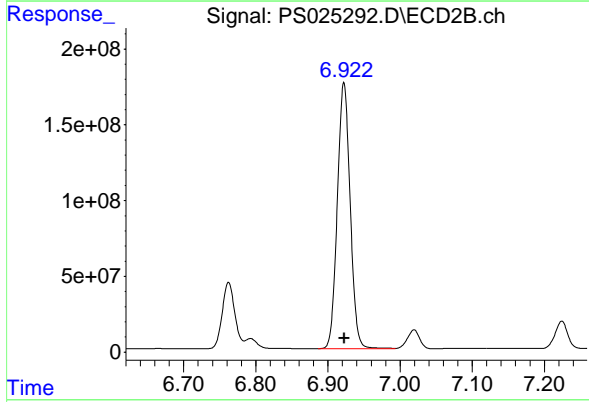
R.T.: 6.762 min
 Delta R.T.: -0.001 min
 Response: 530709724
 Conc: 747.72 ng/ml



#5 DICAMBA

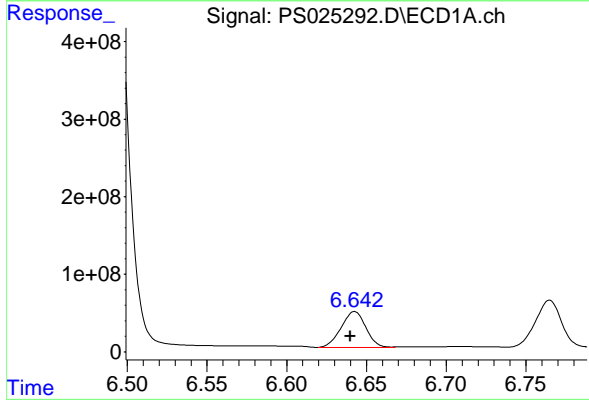
R.T.: 6.492 min
 Delta R.T.: 0.000 min
 Response: 6934913130
 Conc: 710.78 ng/ml

Instrument :
 ECD_S
 ClientSampleId :
 HSTDCCC750



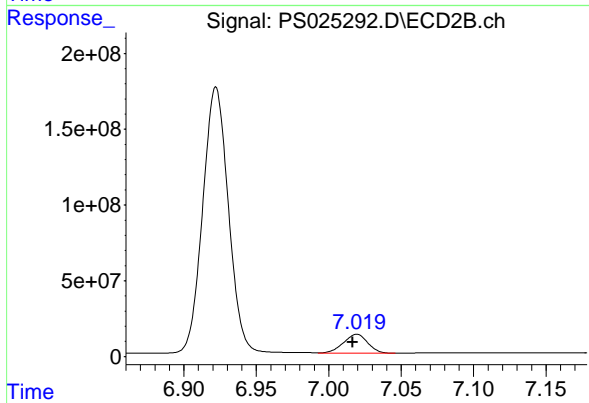
#5 DICAMBA

R.T.: 6.922 min
 Delta R.T.: 0.000 min
 Response: 2168135462
 Conc: 716.30 ng/ml



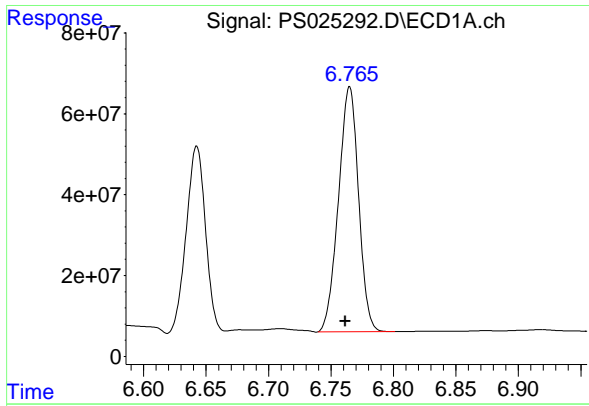
#6 MCPP

R.T.: 6.643 min
 Delta R.T.: 0.003 min
 Response: 497534830
 Conc: 73.95 ug/ml



#6 MCPP

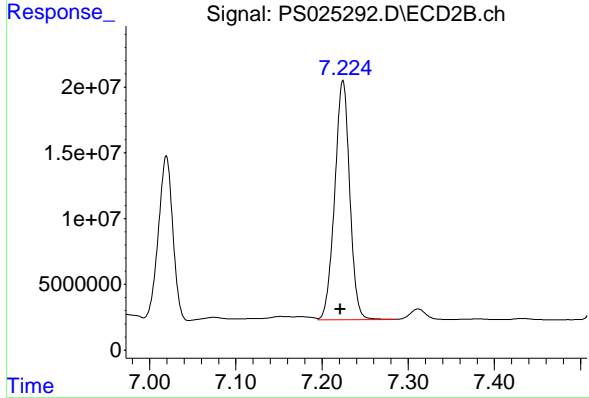
R.T.: 7.019 min
 Delta R.T.: 0.003 min
 Response: 145444717
 Conc: 72.86 ug/ml



#7 MCPA

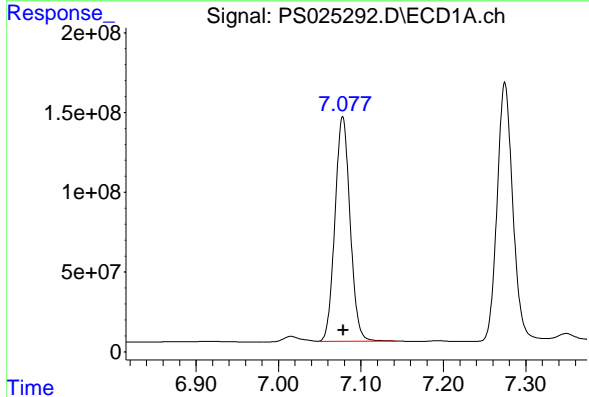
R.T.: 6.765 min
 Delta R.T.: 0.003 min
 Response: 679083250
 Conc: 71.60 ug/ml

Instrument :
 ECD_S
 ClientSampleId :
 HSTDCCC750



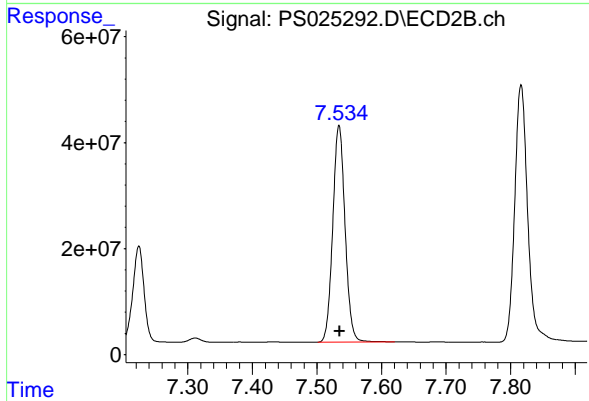
#7 MCPA

R.T.: 7.224 min
 Delta R.T.: 0.003 min
 Response: 219711561
 Conc: 69.90 ug/ml



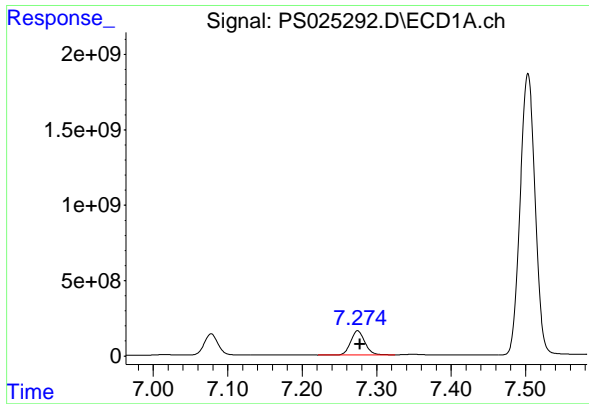
#8 DICHLORPROP

R.T.: 7.078 min
 Delta R.T.: 0.000 min
 Response: 1795137536
 Conc: 697.80 ng/ml



#8 DICHLORPROP

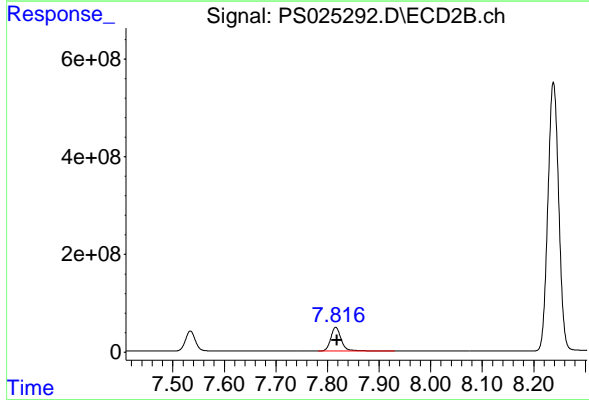
R.T.: 7.534 min
 Delta R.T.: 0.000 min
 Response: 541214299
 Conc: 699.66 ng/ml



#9 2,4-D

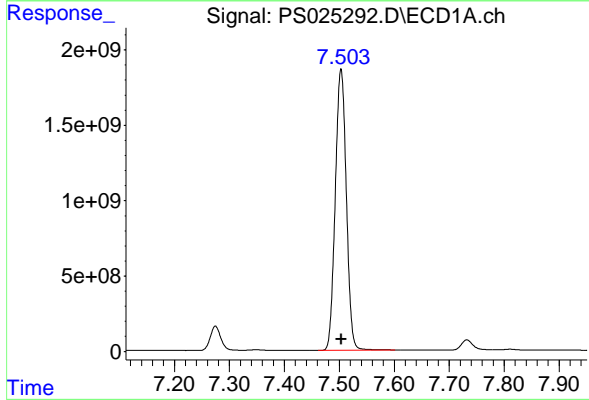
R.T.: 7.275 min
 Delta R.T.: -0.003 min
 Response: 2151847537
 Conc: 694.62 ng/ml

Instrument :
 ECD_S
 ClientSampleId :
 HSTDCCC750



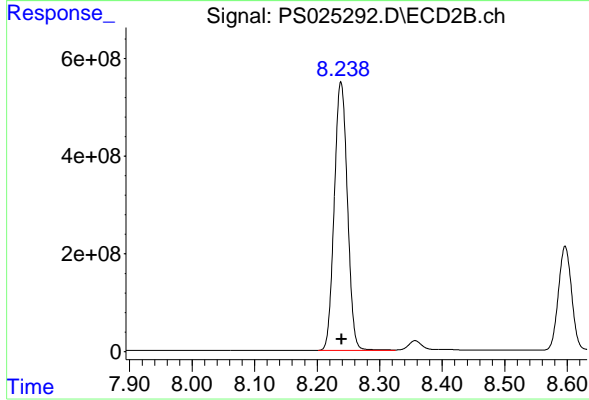
#9 2,4-D

R.T.: 7.816 min
 Delta R.T.: -0.002 min
 Response: 675940783
 Conc: 704.71 ng/ml



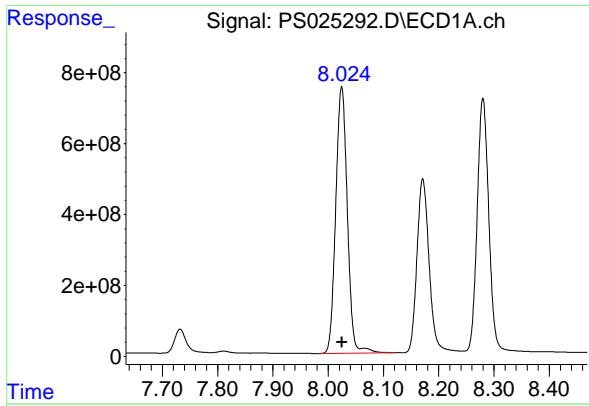
#10 Pentachlorophenol

R.T.: 7.503 min
 Delta R.T.: 0.000 min
 Response: 26060679716
 Conc: 739.31 ng/ml



#10 Pentachlorophenol

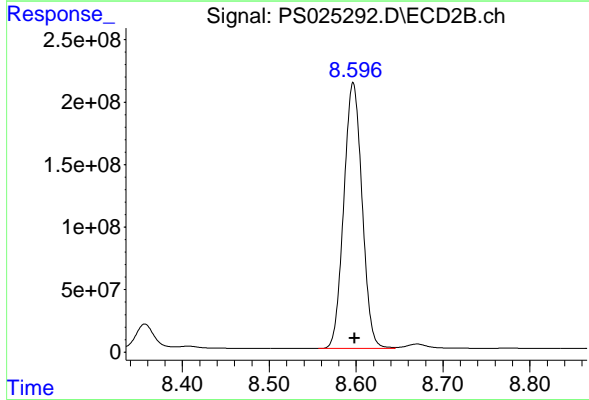
R.T.: 8.238 min
 Delta R.T.: -0.001 min
 Response: 8027264970
 Conc: 724.08 ng/ml



#11 2,4,5-TP (SILVEX)

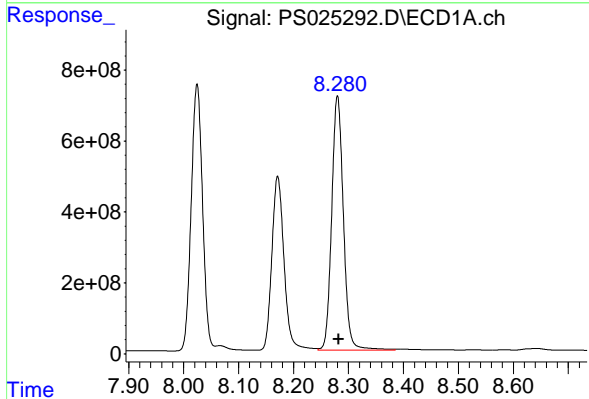
R.T.: 8.024 min
 Delta R.T.: 0.000 min
 Response: 10948866771
 Conc: 720.44 ng/ml

Instrument :
 ECD_S
 ClientSampleId :
 HSTDCCC750



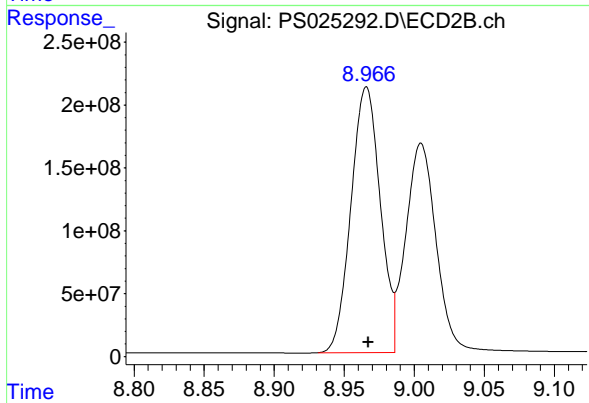
#11 2,4,5-TP (SILVEX)

R.T.: 8.597 min
 Delta R.T.: -0.002 min
 Response: 3112653724
 Conc: 719.89 ng/ml



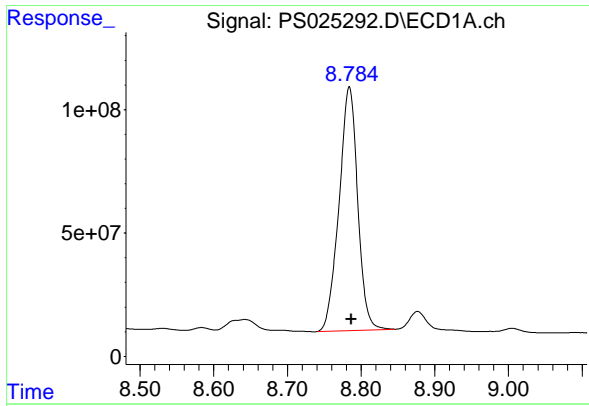
#12 2,4,5-T

R.T.: 8.280 min
 Delta R.T.: -0.002 min
 Response: 10617803039
 Conc: 707.91 ng/ml



#12 2,4,5-T

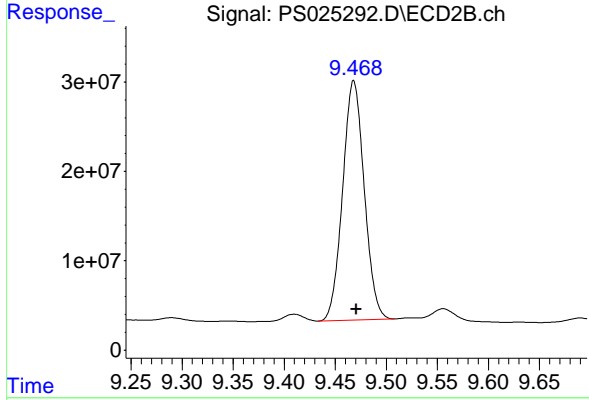
R.T.: 8.966 min
 Delta R.T.: -0.001 min
 Response: 3079196430
 Conc: 721.46 ng/ml



#13 2,4-DB

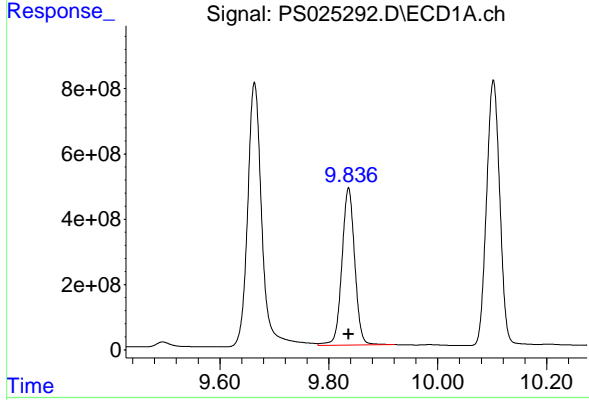
R.T.: 8.784 min
 Delta R.T.: -0.003 min
 Response: 1735693966
 Conc: 719.80 ng/ml

Instrument :
 ECD_S
 ClientSampleId :
 HSTDCCC750



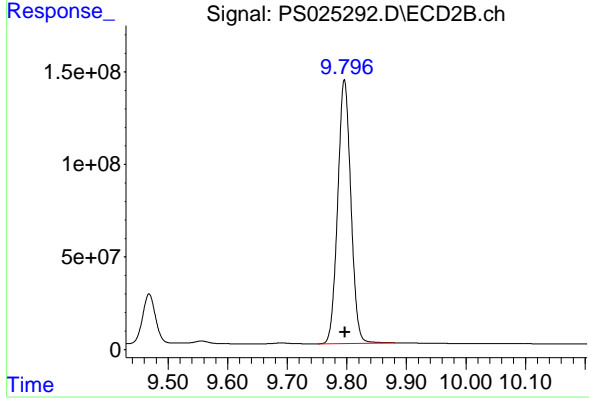
#13 2,4-DB

R.T.: 9.468 min
 Delta R.T.: -0.002 min
 Response: 394343997
 Conc: 718.87 ng/ml



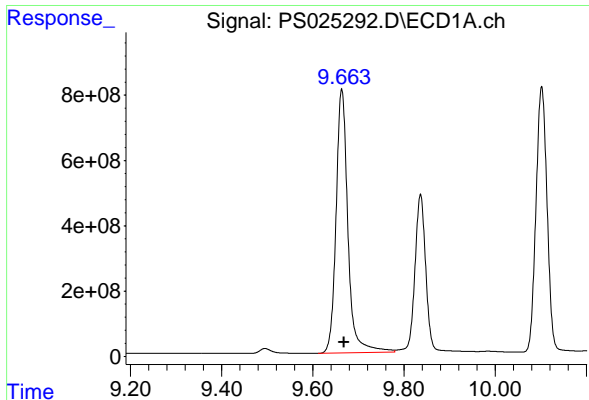
#14 DINOSEB

R.T.: 9.836 min
 Delta R.T.: 0.000 min
 Response: 7885258111
 Conc: 686.01 ng/ml



#14 DINOSEB

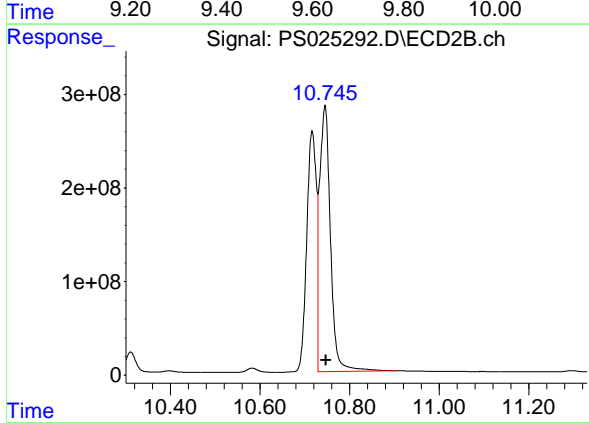
R.T.: 9.796 min
 Delta R.T.: -0.001 min
 Response: 2185075381
 Conc: 688.00 ng/ml



#15 Picloram

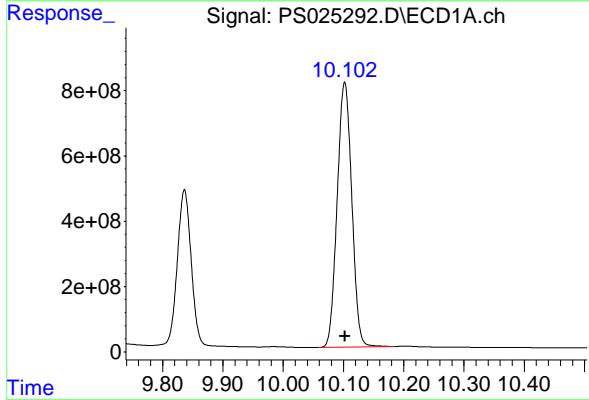
R.T.: 9.664 min
 Delta R.T.: -0.005 min
 Response: 14622018012
 Conc: 699.86 ng/ml

Instrument :
 ECD_S
 ClientSampleId :
 HSTDCCC750



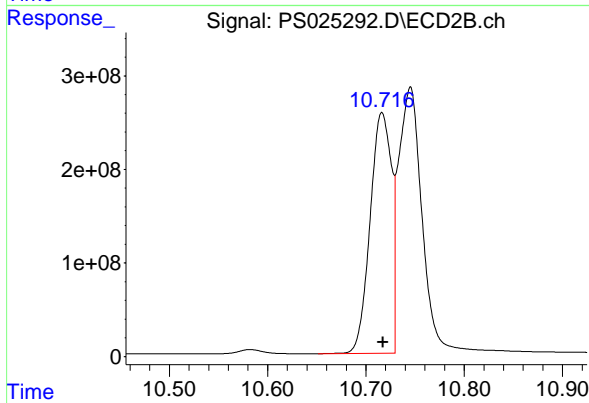
#15 Picloram

R.T.: 10.745 min
 Delta R.T.: -0.002 min
 Response: 4768906295
 Conc: 699.93 ng/ml



#16 DCPA

R.T.: 10.102 min
 Delta R.T.: 0.000 min
 Response: 13645925070
 Conc: 718.07 ng/ml



#16 DCPA

R.T.: 10.716 min
 Delta R.T.: -0.001 min
 Response: 3870235843
 Conc: 724.72 ng/ml