

Data Path : Z:\pestpcbsrv\HPCHEM1\ECD_S\Data\PS122923\
 Data File : PS025313.D
 Signal(s) : Signal #1: ECD1A.ch Signal #2: ECD2B.ch
 Acq On : 29 Dec 2023 17:34
 Operator : AR\AJ
 Sample : 05908-07
 Misc :
 ALS Vial : 9 Sample Multiplier: 1

Instrument :
 ECD_S
 ClientSampleId :

Integration File signal 1: autoint1.e
 Integration File signal 2: autoint2.e
 Quant Time: Dec 30 06:03:12 2023
 Quant Method : Z:\pestpcbsrv\HPCHEM1\ECD_S\Method\PS122823.M
 Quant Title : 8080.M
 QLast Update : Thu Dec 28 17:23:18 2023
 Response via : Initial Calibration
 Integrator: ChemStation

Volume Inj. : 2 µl
 Signal #1 Phase : Rtx-CLPesticides Signal #2 Phase: Rtx-CLPesticides2
 Signal #1 Info : 30M x 0.32mm x0.5 Signal #2 Info : 30M x 0.32mm x 0.25µm

Compound	RT#1	RT#2	Resp#1	Resp#2	ng/ml	ng/ml

System Monitoring Compounds						
4) S 2,4-DCAA	6.351	6.762	813.6E6	226.0E6	363.094	318.350
Target Compounds						
2) T 3,5-DICHL...	5.693	5.939	2314389	6953686	<MDL	6.217 #
3) T 4-Nitroph...	6.217	6.362	7277518	2610370	4.698	5.255
5) T DICAMBA	6.533f	6.916	-3558333	2157025	N.D.	<MDL
6) T MCPP	6.672	7.002	255.9E6	9515002	38.040	4.767 #
7) T MCPA	6.799	7.236	18609110	13028316	1.962	4.145 #
8) T DICHLORPROP	7.068	7.543	77912921	64022962	30.286	82.767 #
9) T 2,4-D	7.240	7.820	34585942	13864430	11.164	14.455 #
10) T Pentachlo...	7.507	8.238	131.9E6	24094955	3.740	2.173 #
12) T 2,4,5-T	8.299	8.951	134.1E6	5729393	8.942	1.342 #
13) T 2,4-DB	8.801	9.473	316.6E6	57438470	131.280	104.707
14) T DINOSEB	9.786f	9.830	160.6E6	61582226	13.974	19.390 #
15) T Picloram	9.674	10.761	6984113	19111525	<MDL	2.805 #
16) T DCPA	10.084	10.761f	80753889	19111525	4.249	3.579

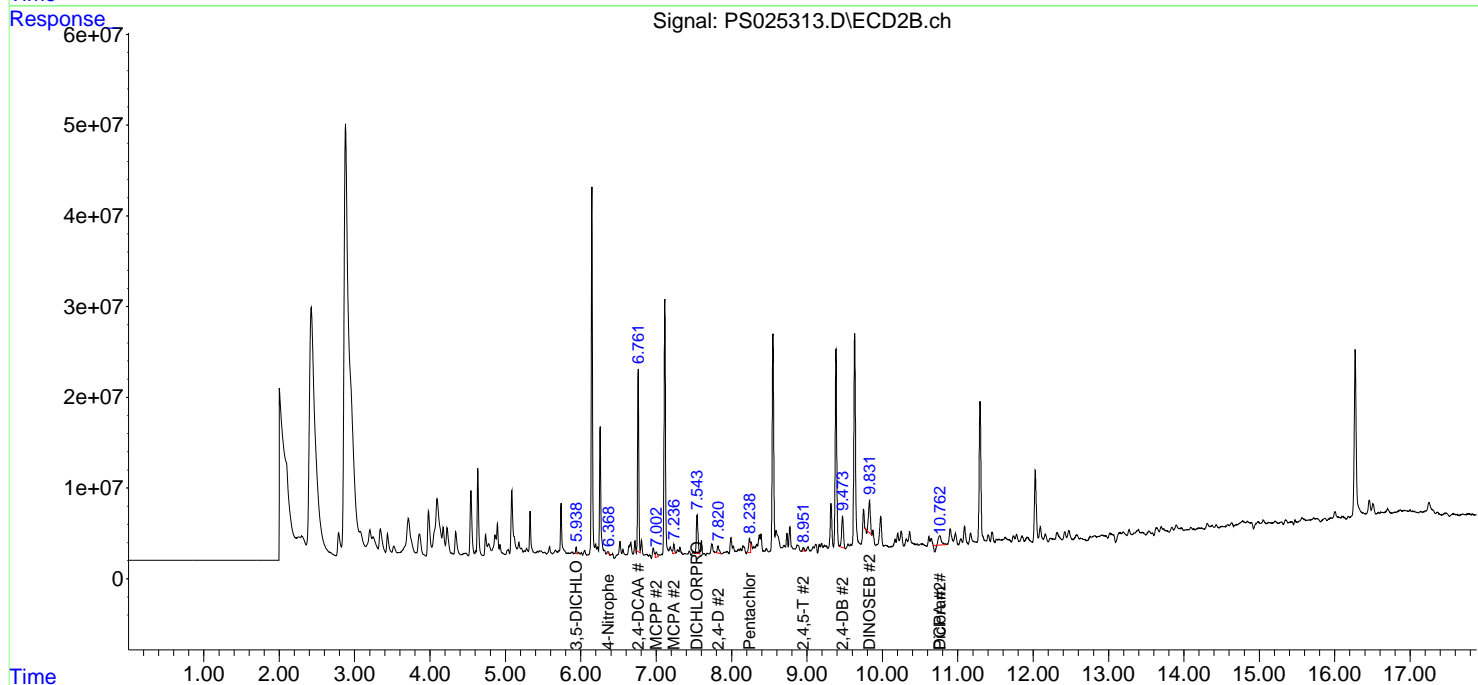
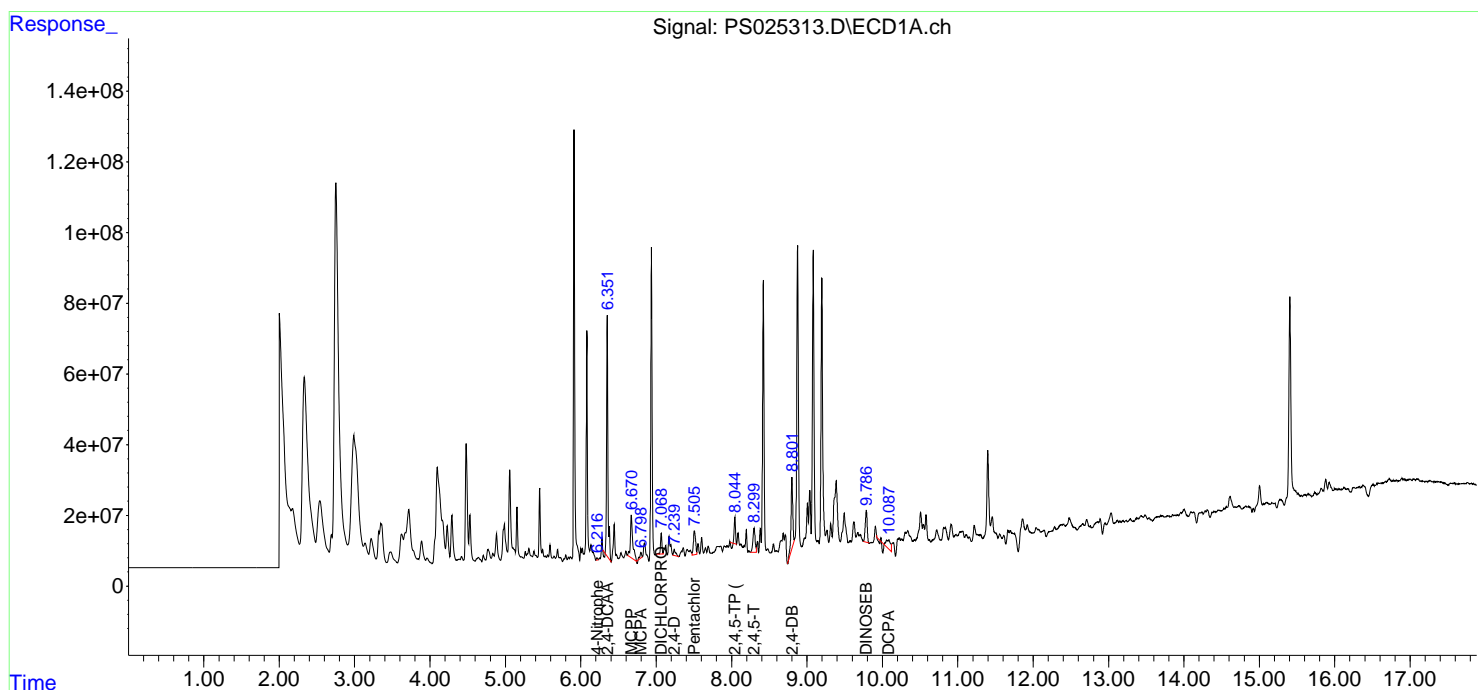
(f)=RT Delta > 1/2 Window (#)=Amounts differ by > 25% (m)=manual int.

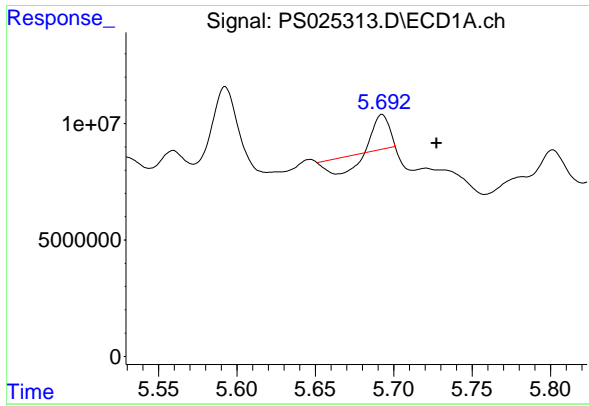
Data Path : Z:\pestpcbsrv\HPCHEM1\ECD_S\Data\PS122923\
 Data File : PS025313.D
 Signal(s) : Signal #1: ECD1A.ch Signal #2: ECD2B.ch
 Acq On : 29 Dec 2023 17:34
 Operator : AR\AJ
 Sample : 05908-07
 Misc :
 ALS Vial : 9 Sample Multiplier: 1

Instrument :
 ECD_S
 ClientSampleId :

Integration File signal 1: autoint1.e
 Integration File signal 2: autoint2.e
 Quant Time: Dec 30 06:03:12 2023
 Quant Method : Z:\pestpcbsrv\HPCHEM1\ECD_S\Method\PS122823.M
 Quant Title : 8080.M
 QLast Update : Thu Dec 28 17:23:18 2023
 Response via : Initial Calibration
 Integrator: ChemStation

Volume Inj. : 2 µl
 Signal #1 Phase : Rtx-CLPesticides Signal #2 Phase: Rtx-CLPesticides2
 Signal #1 Info : 30M x 0.32mm x 0.5 Signal #2 Info : 30M x 0.32mm x 0.25µm

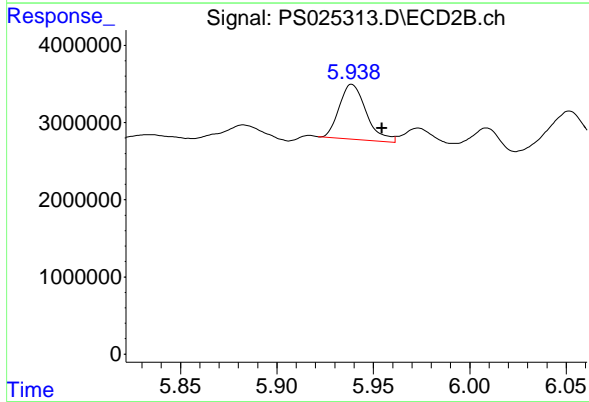




#2 3,5-DICHLOROBENZOIC ACID

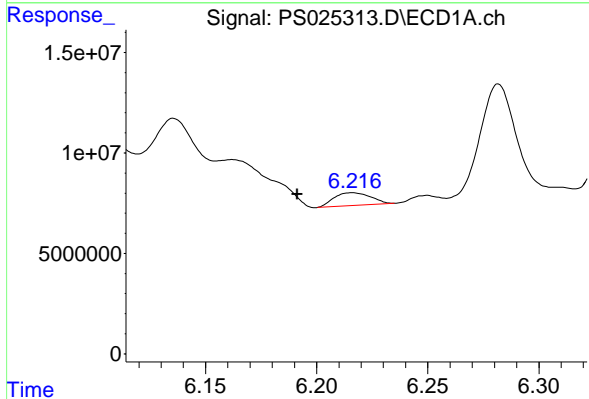
R.T.: 5.693 min
 Delta R.T.: -0.035 min
 Response: 2314389
 Conc: N.D.

Instrument :
 ECD_S
 ClientSampleId :



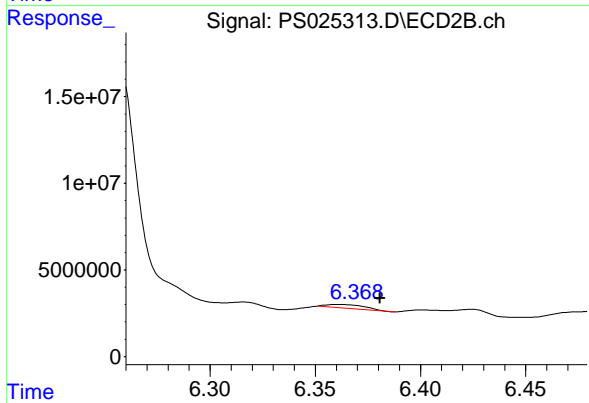
#2 3,5-DICHLOROBENZOIC ACID

R.T.: 5.939 min
 Delta R.T.: -0.016 min
 Response: 6953686
 Conc: 6.22 ng/ml



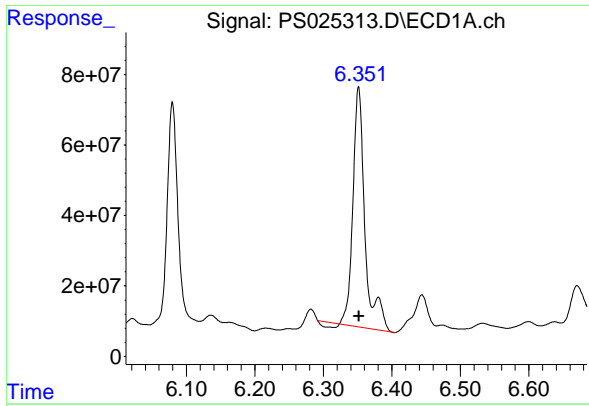
#3 4-Nitrophenol

R.T.: 6.217 min
 Delta R.T.: 0.026 min
 Response: 7277518
 Conc: 4.70 ng/ml



#3 4-Nitrophenol

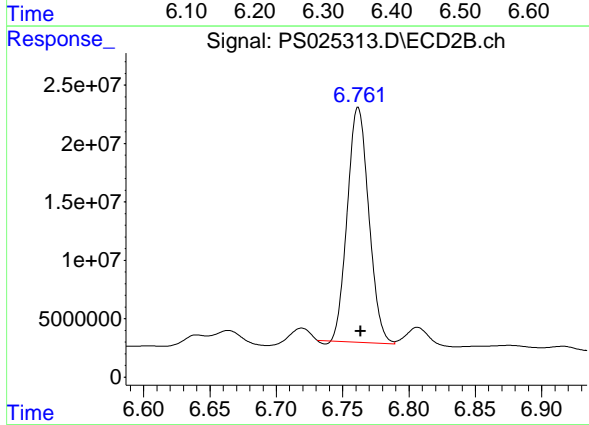
R.T.: 6.362 min
 Delta R.T.: -0.019 min
 Response: 2610370
 Conc: 5.26 ng/ml



#4 2,4-DCAA

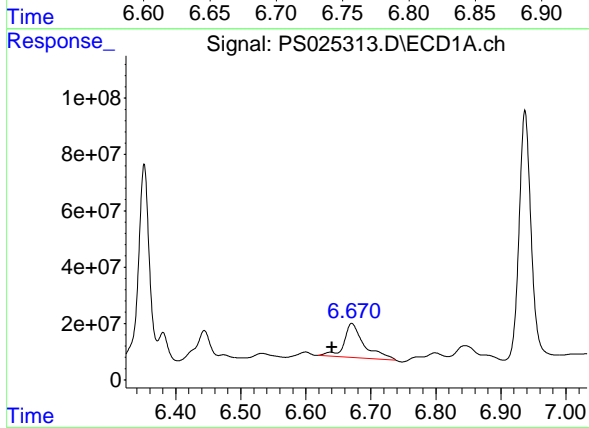
R.T.: 6.351 min
 Delta R.T.: 0.000 min
 Response: 813622190
 Conc: 363.09 ng/ml

Instrument :
 ECD_S
 ClientSampleId :



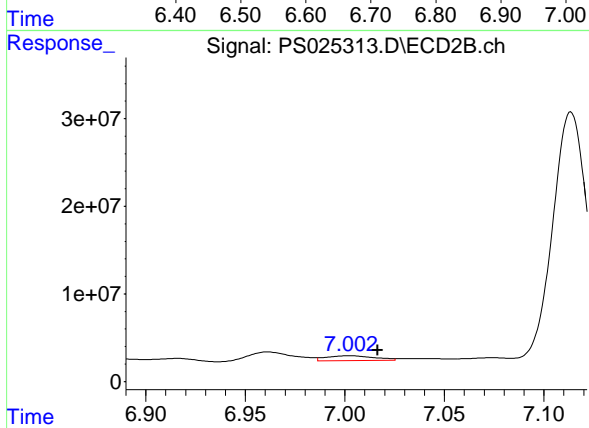
#4 2,4-DCAA

R.T.: 6.762 min
 Delta R.T.: -0.002 min
 Response: 225956407
 Conc: 318.35 ng/ml



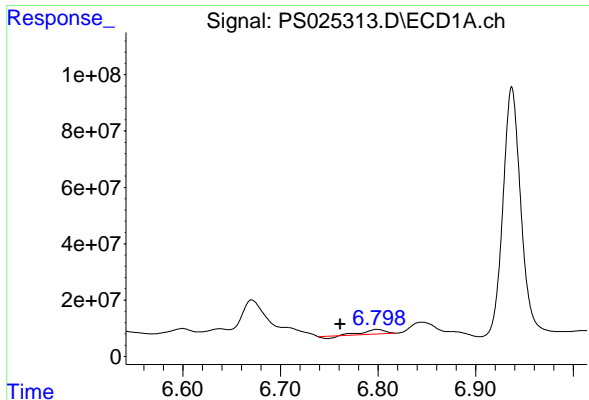
#6 MCPP

R.T.: 6.672 min
 Delta R.T.: 0.032 min
 Response: 255930589
 Conc: 38.04 ug/ml



#6 MCPP

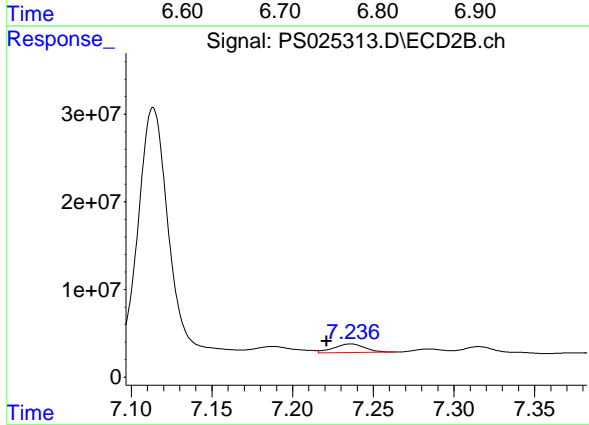
R.T.: 7.002 min
 Delta R.T.: -0.014 min
 Response: 9515002
 Conc: 4.77 ug/ml



#7 MCPA

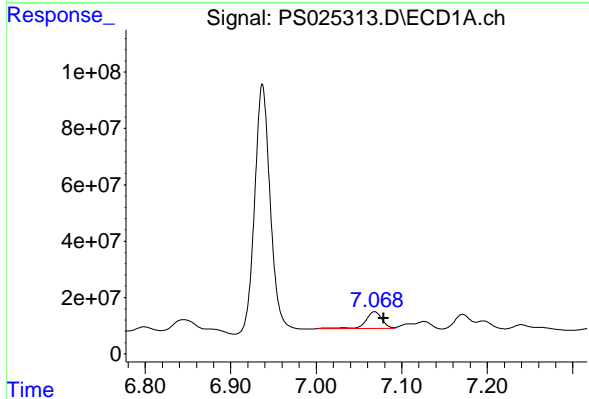
R.T.: 6.799 min
 Delta R.T.: 0.038 min
 Response: 18609110
 Conc: 1.96 ug/ml

Instrument :
 ECD_S
 ClientSampleId :



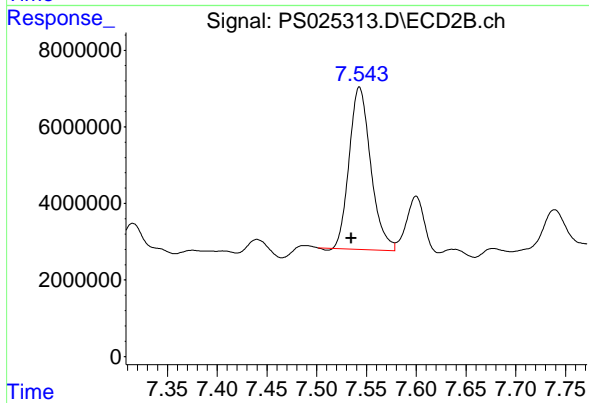
#7 MCPA

R.T.: 7.236 min
 Delta R.T.: 0.015 min
 Response: 13028316
 Conc: 4.15 ug/ml



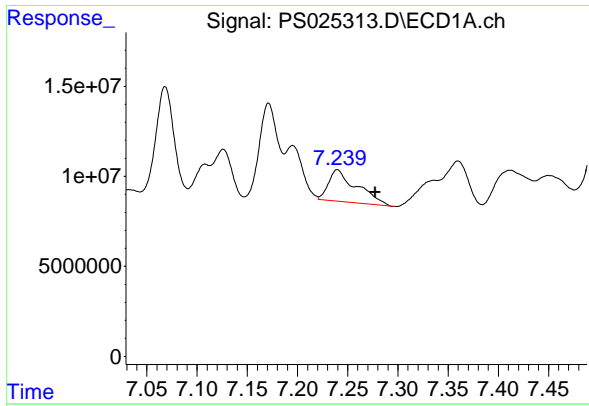
#8 DICHLORPROP

R.T.: 7.068 min
 Delta R.T.: -0.010 min
 Response: 77912921
 Conc: 30.29 ng/ml



#8 DICHLORPROP

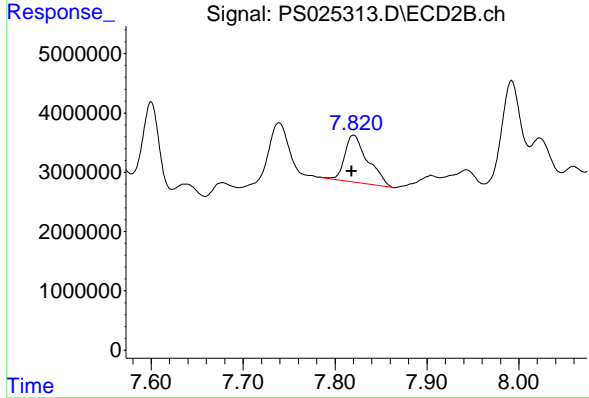
R.T.: 7.543 min
 Delta R.T.: 0.008 min
 Response: 64022962
 Conc: 82.77 ng/ml



#9 2,4-D

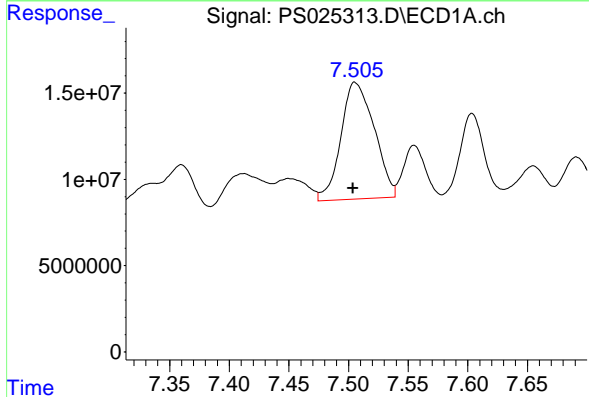
R.T.: 7.240 min
 Delta R.T.: -0.037 min
 Response: 34585942
 Conc: 11.16 ng/ml

Instrument :
 ECD_S
 ClientSampleId :



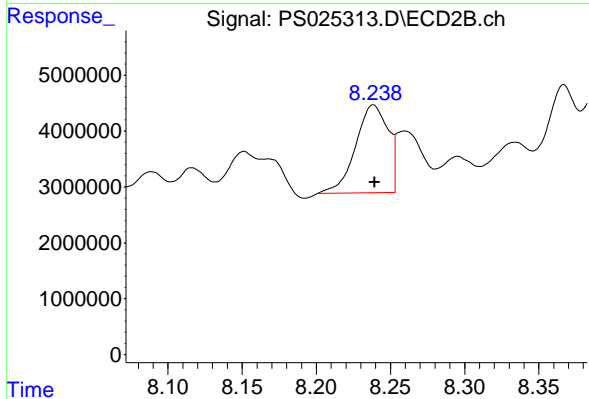
#9 2,4-D

R.T.: 7.820 min
 Delta R.T.: 0.002 min
 Response: 13864430
 Conc: 14.45 ng/ml



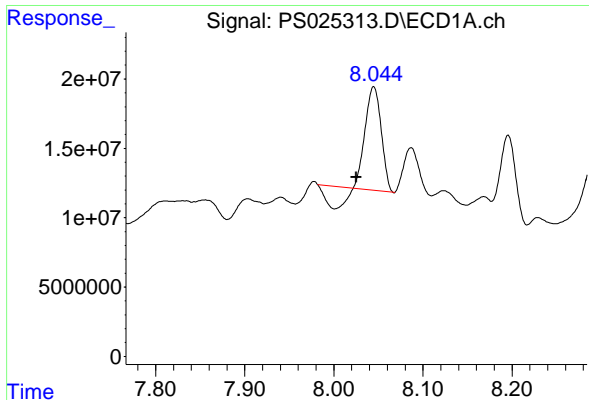
#10 Pentachlorophenol

R.T.: 7.507 min
 Delta R.T.: 0.003 min
 Response: 131851385
 Conc: 3.74 ng/ml



#10 Pentachlorophenol

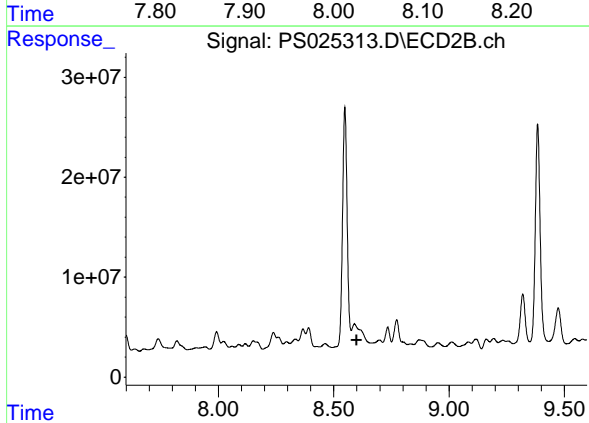
R.T.: 8.238 min
 Delta R.T.: -0.001 min
 Response: 24094955
 Conc: 2.17 ng/ml



#11 2,4,5-TP (SILVEX)

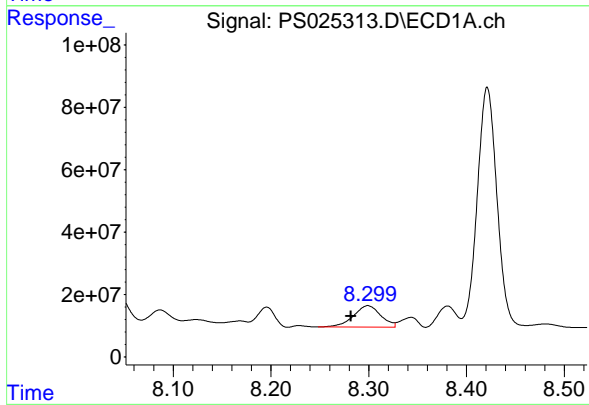
R.T.: 8.044 min
 Delta R.T.: 0.019 min
 Response: 70473433
 Conc: 4.64 ng/ml

Instrument :
 ECD_S
 ClientSampleId :



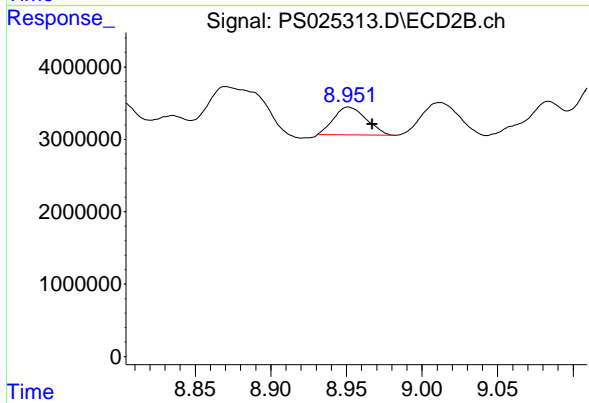
#11 2,4,5-TP (SILVEX)

R.T.: 8.590 min
 Delta R.T.: -0.009 min
 Response: -248169851
 Conc: N.D.



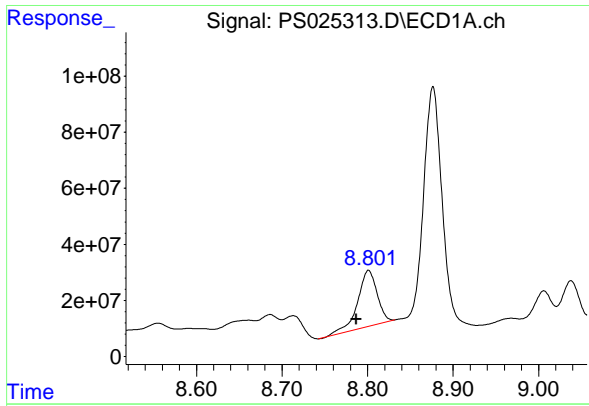
#12 2,4,5-T

R.T.: 8.299 min
 Delta R.T.: 0.017 min
 Response: 134120843
 Conc: 8.94 ng/ml



#12 2,4,5-T

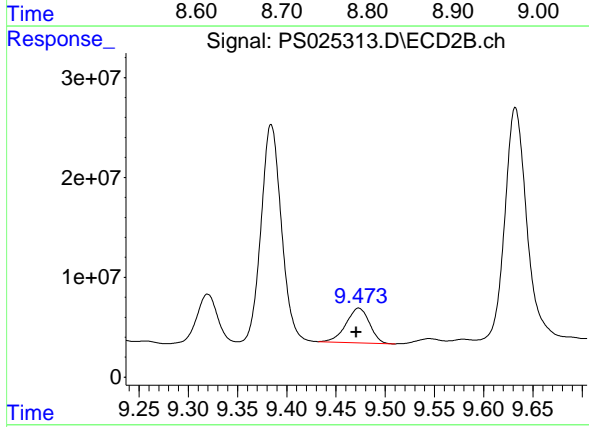
R.T.: 8.951 min
 Delta R.T.: -0.016 min
 Response: 5729393
 Conc: 1.34 ng/ml



#13 2,4-DB

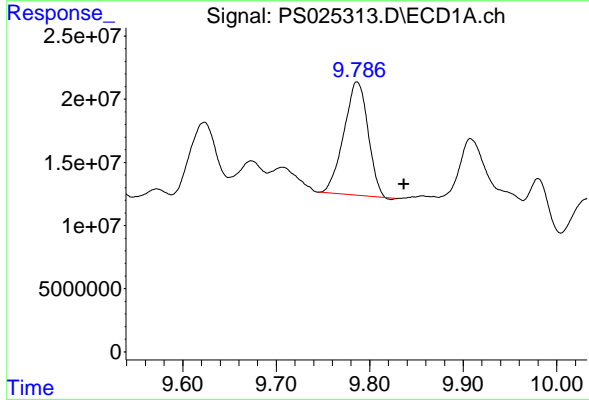
R.T.: 8.801 min
 Delta R.T.: 0.014 min
 Response: 316561945
 Conc: 131.28 ng/ml

Instrument :
 ECD_S
 ClientSampleId :



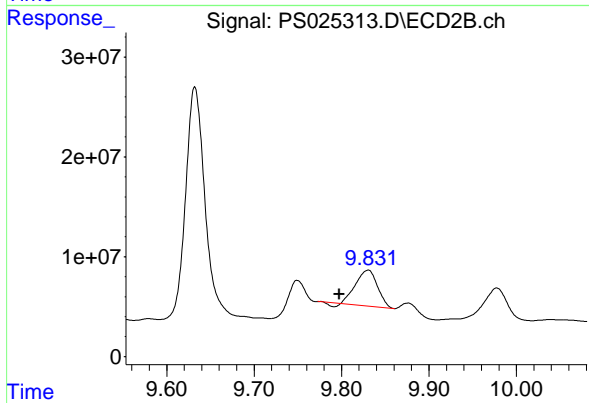
#13 2,4-DB

R.T.: 9.473 min
 Delta R.T.: 0.003 min
 Response: 57438470
 Conc: 104.71 ng/ml



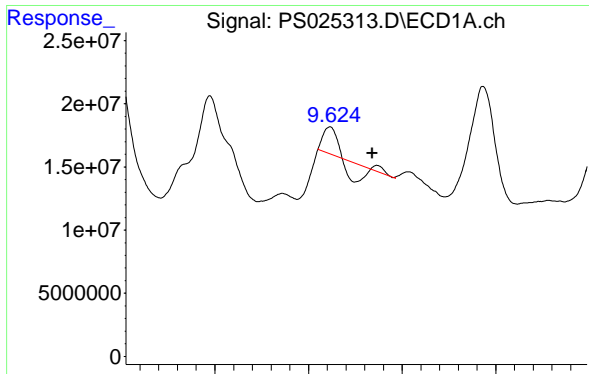
#14 DINOSEB

R.T.: 9.786 min
 Delta R.T.: -0.050 min
 Response: 160616848
 Conc: 13.97 ng/ml



#14 DINOSEB

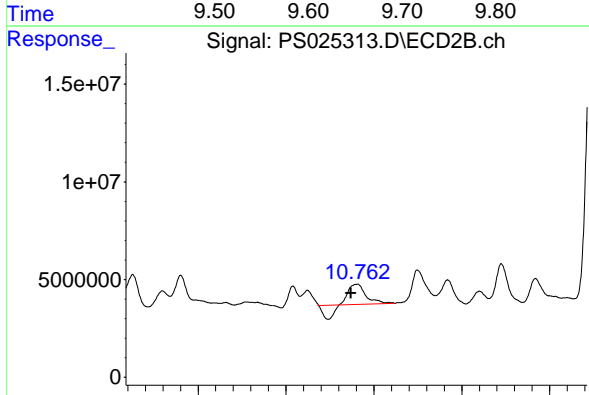
R.T.: 9.830 min
 Delta R.T.: 0.033 min
 Response: 61582226
 Conc: 19.39 ng/ml



#15 Picloram

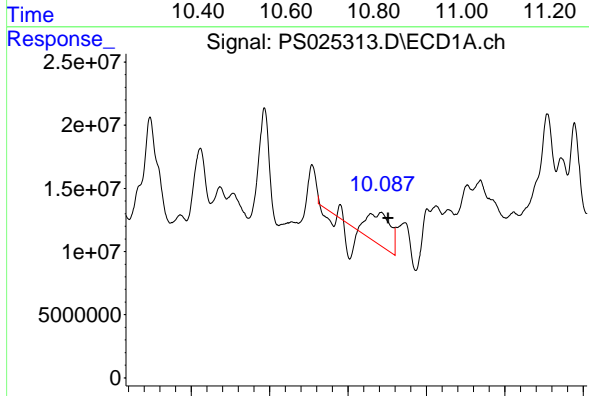
R.T.: 9.674 min
 Delta R.T.: 0.005 min
 Response: 6984113
 Conc: N.D.

Instrument :
 ECD_S
 ClientSampleId :



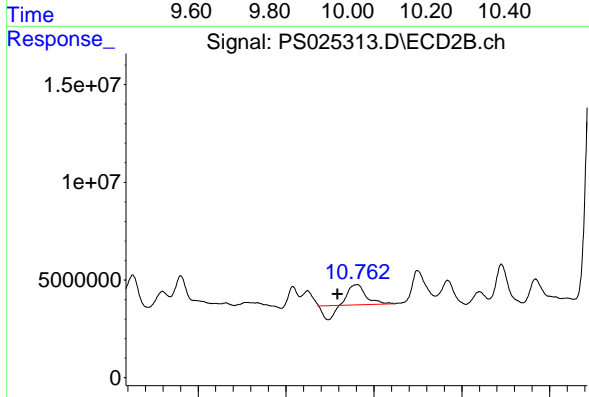
#15 Picloram

R.T.: 10.761 min
 Delta R.T.: 0.014 min
 Response: 19111525
 Conc: 2.81 ng/ml



#16 DCPA

R.T.: 10.084 min
 Delta R.T.: -0.018 min
 Response: 80753889
 Conc: 4.25 ng/ml



#16 DCPA

R.T.: 10.761 min
 Delta R.T.: 0.044 min
 Response: 19111525
 Conc: 3.58 ng/ml