

Data Path : Z:\pestpcbsrv\HPCHEM1\ECD_S\Data\PS122923\
 Data File : PS025326.D
 Signal(s) : Signal #1: ECD1A.ch Signal #2: ECD2B.ch
 Acq On : 30 Dec 2023 03:42
 Operator : AR\AJ
 Sample : 05908-18
 Misc :
 ALS Vial : 20 Sample Multiplier: 1

Instrument :
 ECD_S
 ClientSampleId :
 GHL-SS-23

Integration File signal 1: autoint1.e
 Integration File signal 2: autoint2.e
 Quant Time: Dec 30 05:53:57 2023
 Quant Method : Z:\pestpcbsrv\HPCHEM1\ECD_S\Method\PS122823.M
 Quant Title : 8080.M
 QLast Update : Thu Dec 28 17:23:18 2023
 Response via : Initial Calibration
 Integrator: ChemStation

Volume Inj. : 2 µl
 Signal #1 Phase : Rtx-CLPesticides Signal #2 Phase: Rtx-CLPesticides2
 Signal #1 Info : 30M x 0.32mm x0.5 Signal #2 Info : 30M x 0.32mm x 0.25µm

Compound	RT#1	RT#2	Resp#1	Resp#2	ng/ml	ng/ml

System Monitoring Compounds						
4) S 2,4-DCAA	6.350	6.762	1070.2E6	323.2E6	477.595	455.329
Target Compounds						
1) T Dalapon	2.436	2.497	60618014	35845877	19.589	31.189 #
2) T 3,5-DICHL...	5.689	5.970	48458583	2172380	14.248	1.942 #
3) T 4-Nitroph...	6.216	6.405	15729199	56386	10.154	<MDL #
5) T DICAMBA	6.499	6.913	19362787	-2444071	1.985	N.D. #
6) T MCPP	6.669	7.010	204.0E6	28043261	30.317	14.049 #
7) T MCPA	6.795	7.224	51980441	31663209	5.481	10.074 #
8) T DICHLORPROP	7.068	7.543	117.9E6	57008817	45.830	73.699 #
9) T 2,4-D	7.237f	7.841	220.1E6	12429385	71.063	12.958 #
10) T Pentachlo...	7.502	8.238	262.8E6	68960386	7.455	6.220
12) T 2,4,5-T	8.296	8.949	186.0E6	4359857	12.402	1.022 #
14) T DINOSEB	9.786f	9.808	185.7E6	3747039	16.156	1.180 #
15) T Picloram	9.705	10.768	65160293	11225210	3.119	1.648 #
16) T DCPA	10.123	10.768f	159.8E6	11225210	8.407	2.102 #

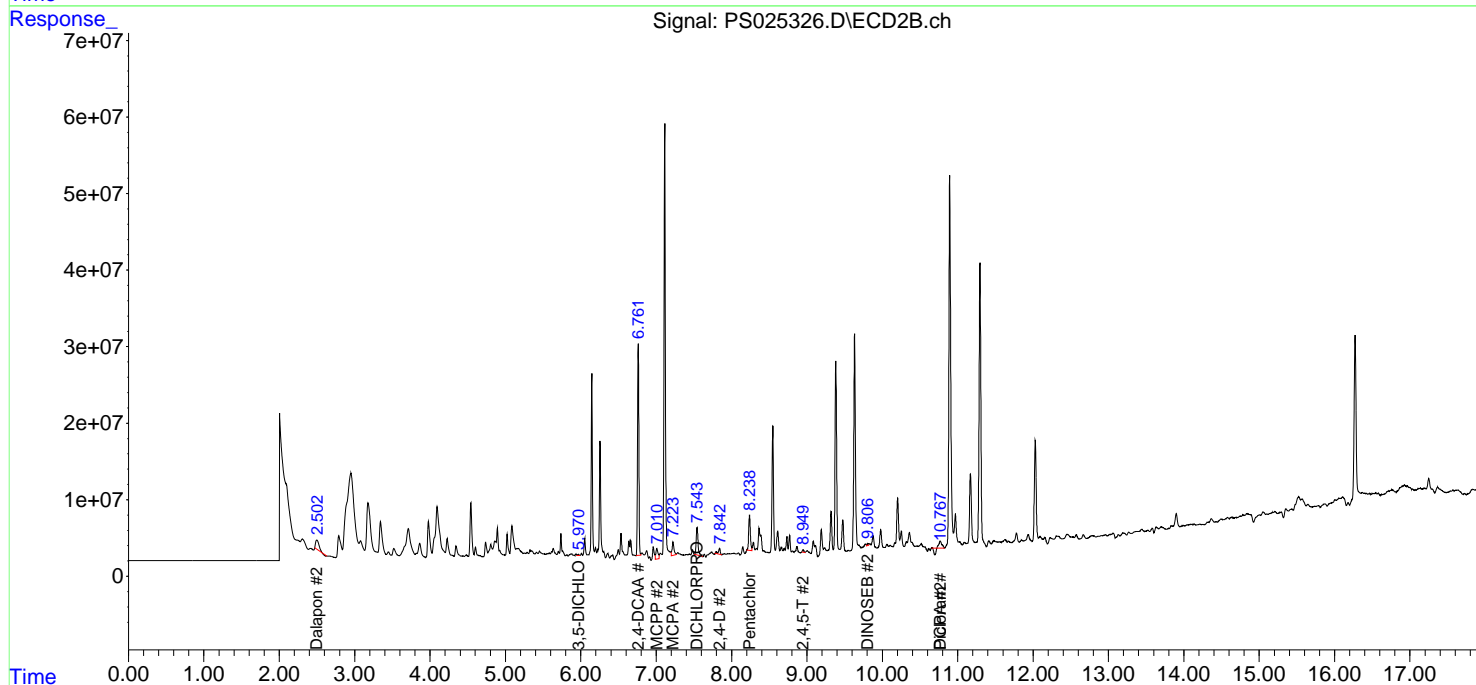
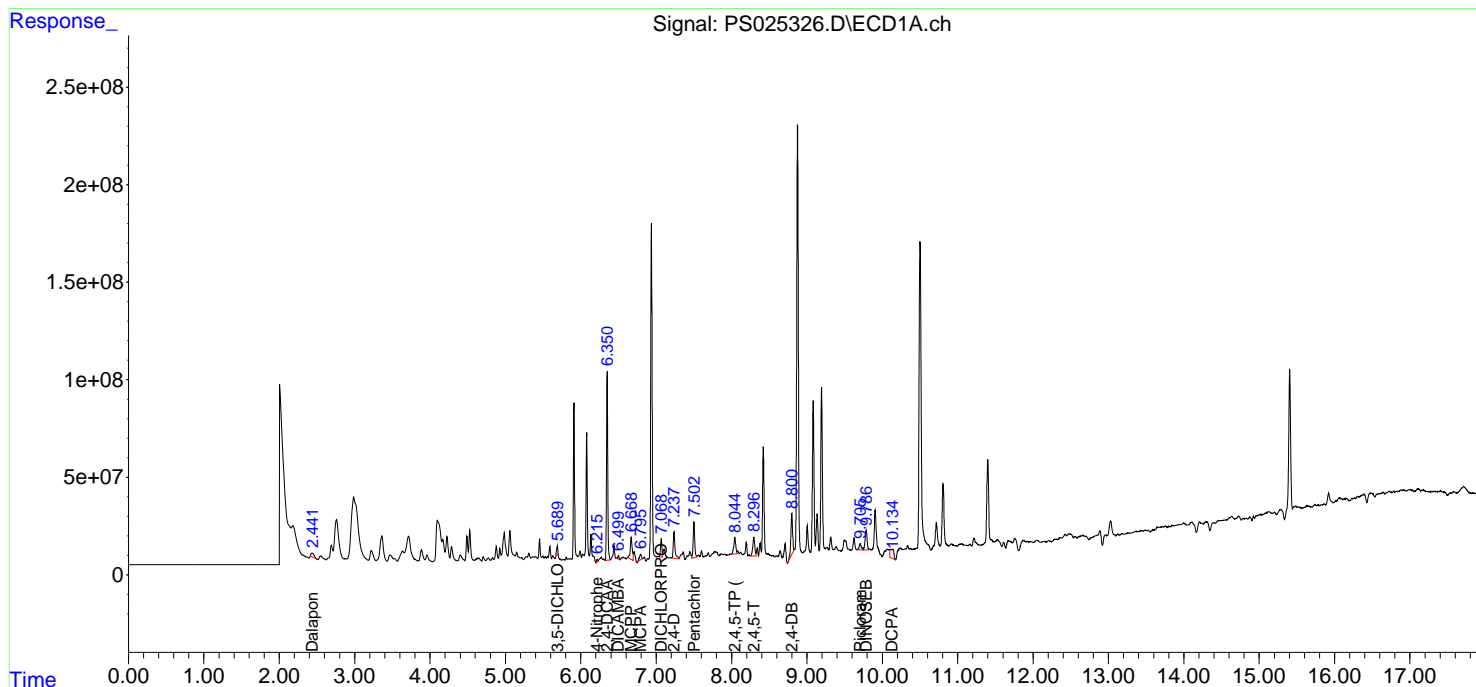
(f)=RT Delta > 1/2 Window (#)=Amounts differ by > 25% (m)=manual int.

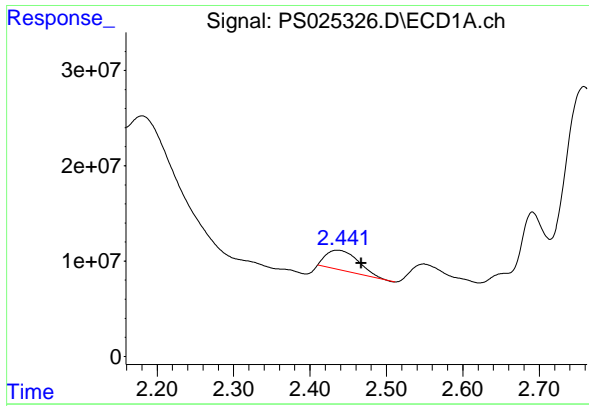
Data Path : Z:\pestpcbsrv\HPCHEM1\ECD_S\Data\PS122923\
 Data File : PS025326.D
 Signal(s) : Signal #1: ECD1A.ch Signal #2: ECD2B.ch
 Acq On : 30 Dec 2023 03:42
 Operator : AR\AJ
 Sample : 05908-18
 Misc :
 ALS Vial : 20 Sample Multiplier: 1

Instrument :
 ECD_S
 ClientSampleId :
 GH-SS-23

Integration File signal 1: autoint1.e
 Integration File signal 2: autoint2.e
 Quant Time: Dec 30 05:53:57 2023
 Quant Method : Z:\pestpcbsrv\HPCHEM1\ECD_S\Method\PS122823.M
 Quant Title : 8080.M
 QLast Update : Thu Dec 28 17:23:18 2023
 Response via : Initial Calibration
 Integrator: ChemStation

Volume Inj. : 2 µl
 Signal #1 Phase : Rtx-CLPesticides Signal #2 Phase: Rtx-CLPesticides2
 Signal #1 Info : 30M x 0.32mm x 0.5 Signal #2 Info : 30M x 0.32mm x 0.25µm

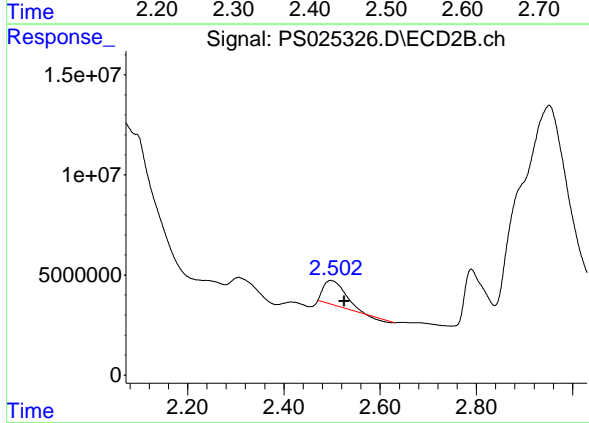




#1 Dalapon

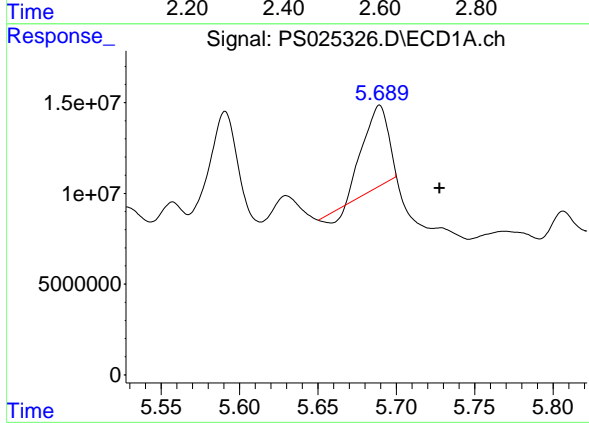
R.T.: 2.436 min
 Delta R.T.: -0.031 min
 Response: 60618014
 Conc: 19.59 ng/ml

Instrument : ECD_S
 ClientSampleId : GH-SS-23



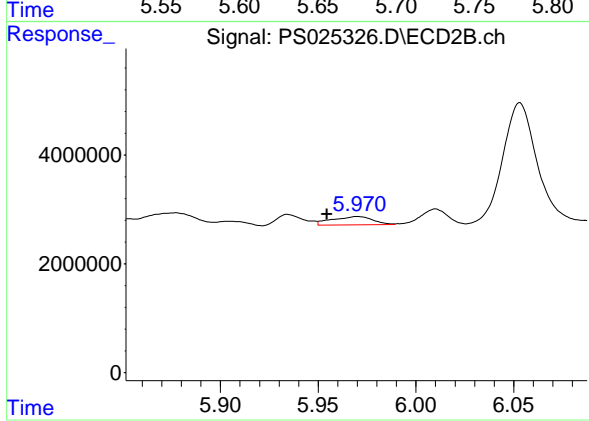
#1 Dalapon

R.T.: 2.497 min
 Delta R.T.: -0.029 min
 Response: 35845877
 Conc: 31.19 ng/ml



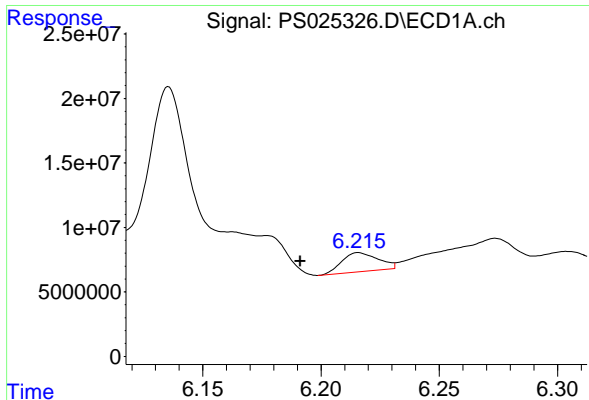
#2 3,5-DICHLOROBENZOIC ACID

R.T.: 5.689 min
 Delta R.T.: -0.039 min
 Response: 48458583
 Conc: 14.25 ng/ml



#2 3,5-DICHLOROBENZOIC ACID

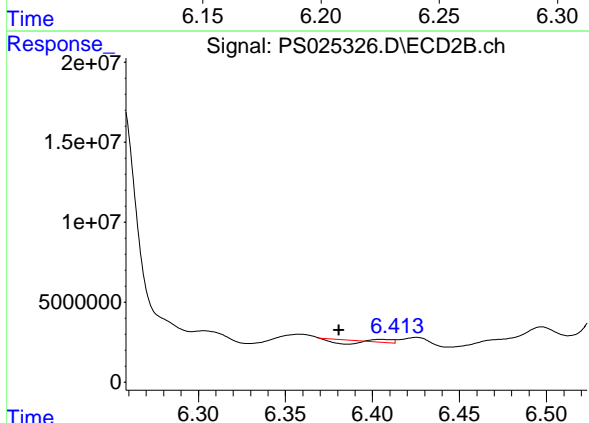
R.T.: 5.970 min
 Delta R.T.: 0.016 min
 Response: 2172380
 Conc: 1.94 ng/ml



#3 4-Nitrophenol

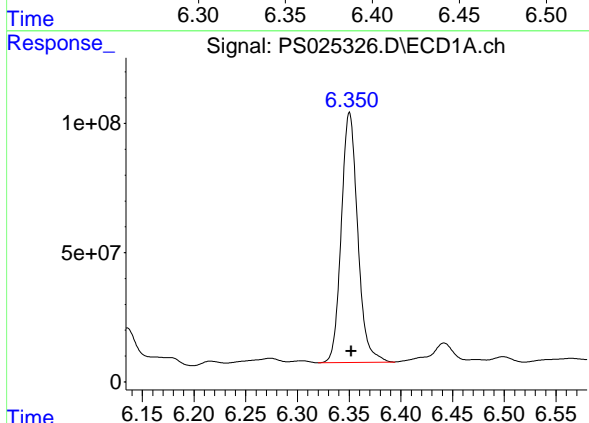
R.T.: 6.216 min
 Delta R.T.: 0.025 min
 Response: 15729199
 Conc: 10.15 ng/ml

Instrument : ECD_S
 ClientSampleId : GHIL-SS-23



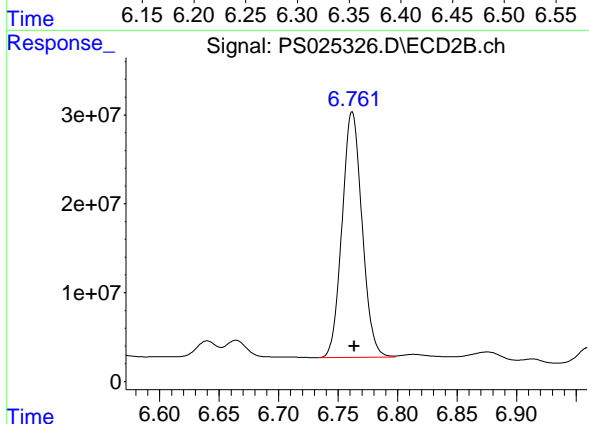
#3 4-Nitrophenol

R.T.: 6.405 min
 Delta R.T.: 0.025 min
 Response: 56386
 Conc: N.D.



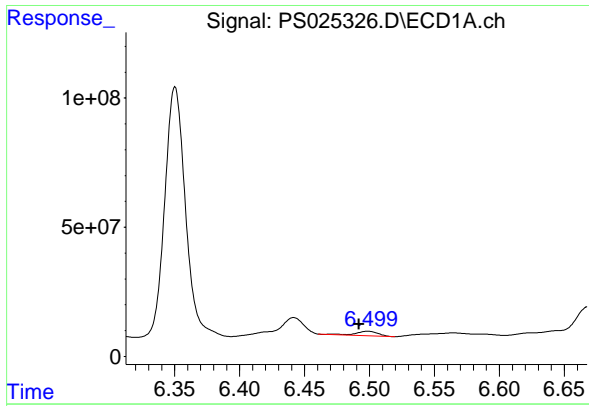
#4 2,4-DCAA

R.T.: 6.350 min
 Delta R.T.: -0.002 min
 Response: 1070195740
 Conc: 477.59 ng/ml



#4 2,4-DCAA

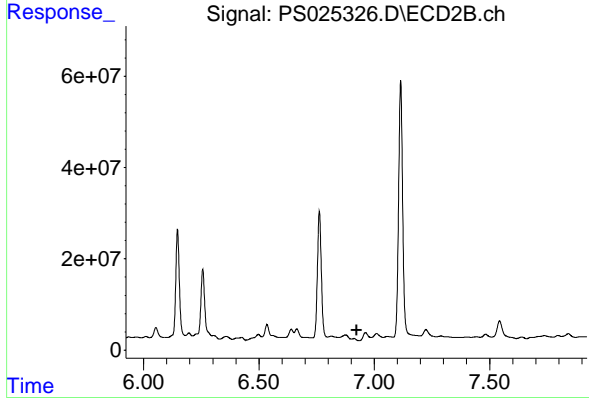
R.T.: 6.762 min
 Delta R.T.: -0.002 min
 Response: 323180174
 Conc: 455.33 ng/ml



#5 DICAMBA

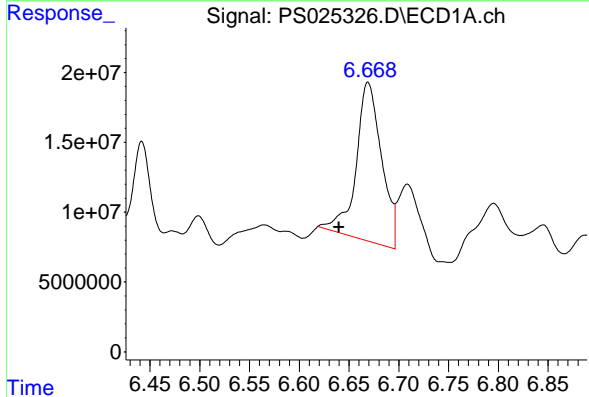
R.T.: 6.499 min
 Delta R.T.: 0.007 min
 Response: 19362787
 Conc: 1.98 ng/ml

Instrument : ECD_S
 ClientSampleId : GH-SS-23



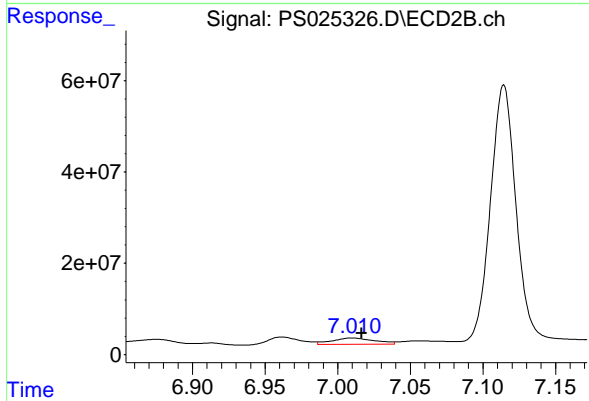
#5 DICAMBA

R.T.: 6.913 min
 Delta R.T.: -0.010 min
 Response: -2444071
 Conc: N.D.



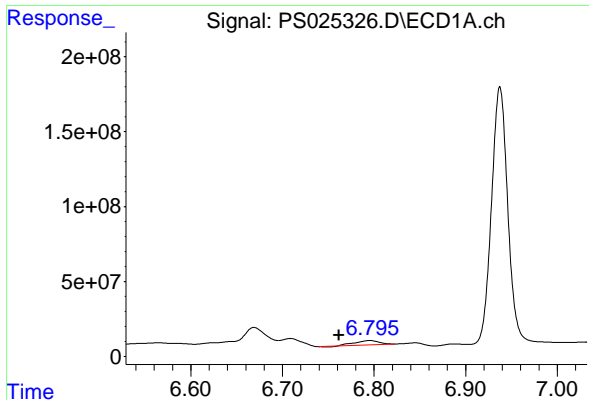
#6 MCPP

R.T.: 6.669 min
 Delta R.T.: 0.029 min
 Response: 203966731
 Conc: 30.32 ug/ml



#6 MCPP

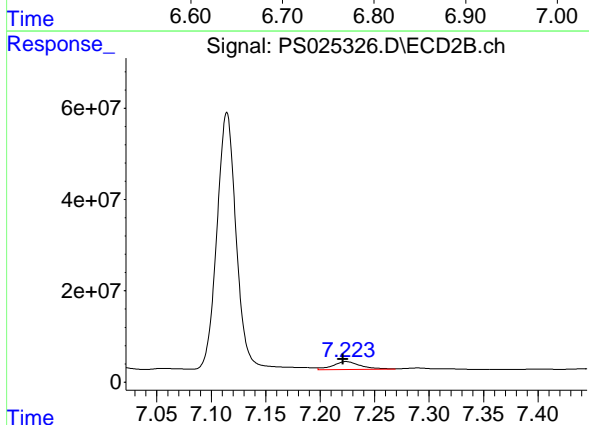
R.T.: 7.010 min
 Delta R.T.: -0.006 min
 Response: 28043261
 Conc: 14.05 ug/ml



#7 MCPA

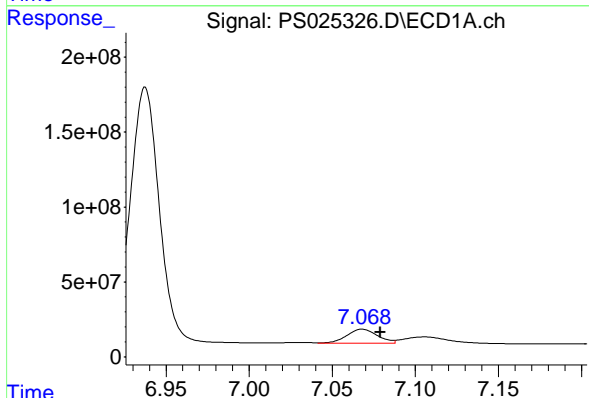
R.T.: 6.795 min
 Delta R.T.: 0.034 min
 Response: 51980441
 Conc: 5.48 ug/ml

Instrument : ECD_S
 ClientSampleId : GH-SS-23



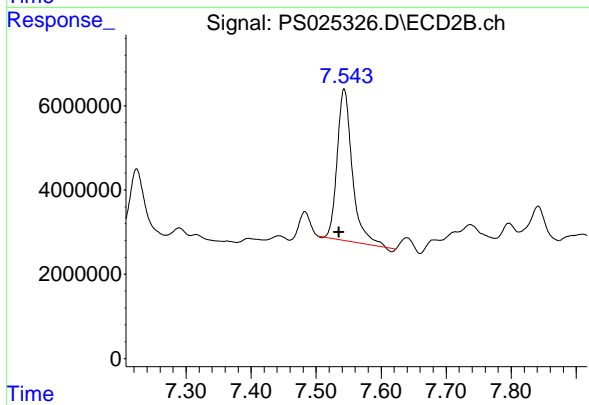
#7 MCPA

R.T.: 7.224 min
 Delta R.T.: 0.003 min
 Response: 31663209
 Conc: 10.07 ug/ml



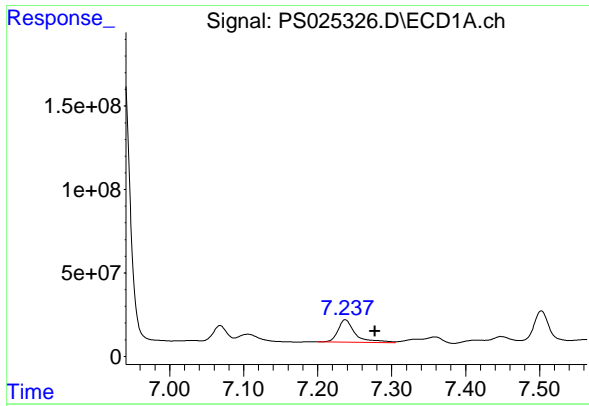
#8 DICHLORPROP

R.T.: 7.068 min
 Delta R.T.: -0.011 min
 Response: 117900843
 Conc: 45.83 ng/ml



#8 DICHLORPROP

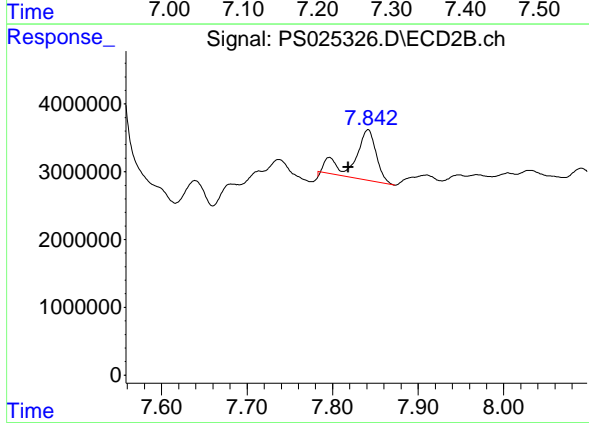
R.T.: 7.543 min
 Delta R.T.: 0.008 min
 Response: 57008817
 Conc: 73.70 ng/ml



#9 2,4-D

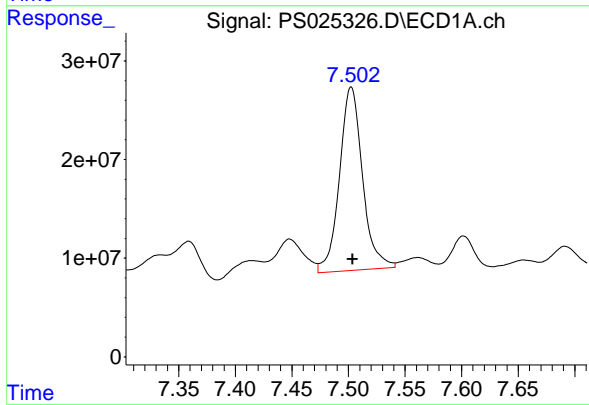
R.T.: 7.237 min
 Delta R.T.: -0.040 min
 Response: 220146327
 Conc: 71.06 ng/ml

Instrument : ECD_S
 ClientSampleId : GHLS-SS-23



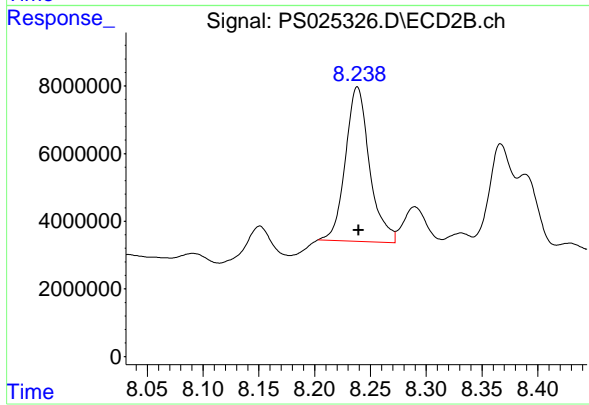
#9 2,4-D

R.T.: 7.841 min
 Delta R.T.: 0.023 min
 Response: 12429385
 Conc: 12.96 ng/ml



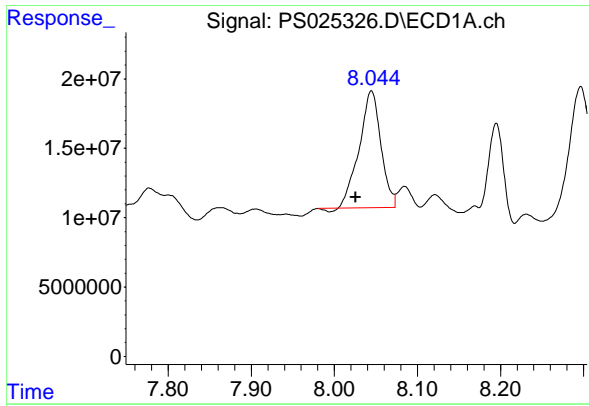
#10 Pentachlorophenol

R.T.: 7.502 min
 Delta R.T.: -0.001 min
 Response: 262802831
 Conc: 7.46 ng/ml



#10 Pentachlorophenol

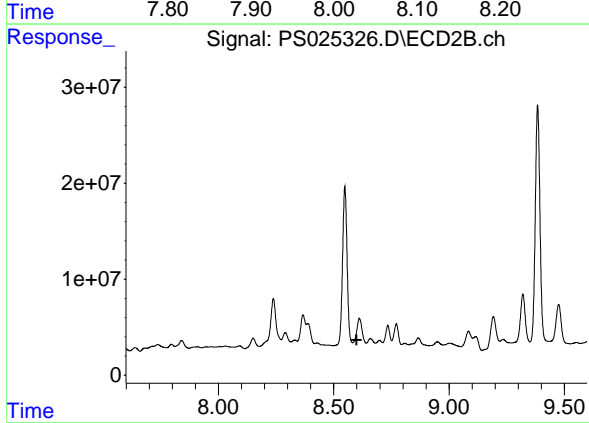
R.T.: 8.238 min
 Delta R.T.: -0.001 min
 Response: 68960386
 Conc: 6.22 ng/ml



#11 2,4,5-TP (SILVEX)

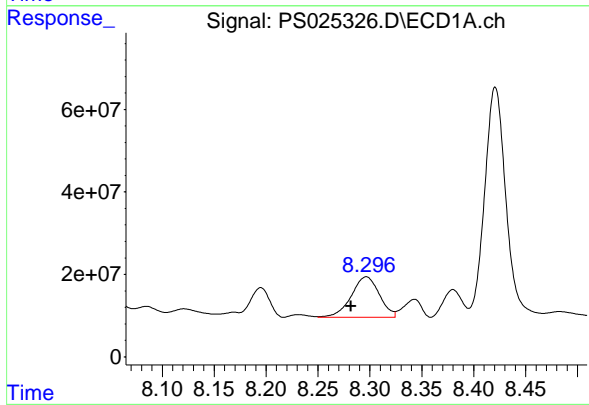
R.T.: 8.045 min
 Delta R.T.: 0.019 min
 Response: 152533832
 Conc: 10.04 ng/ml

Instrument :
 ECD_S
 ClientSampleId :
 GHL-SS-23



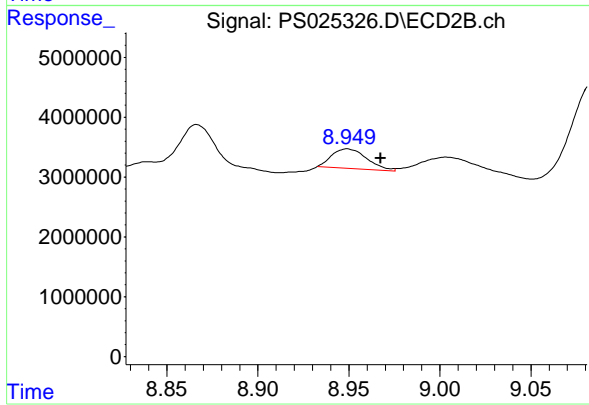
#11 2,4,5-TP (SILVEX)

R.T.: 8.612 min
 Delta R.T.: 0.013 min
 Response: -93353167
 Conc: N.D.



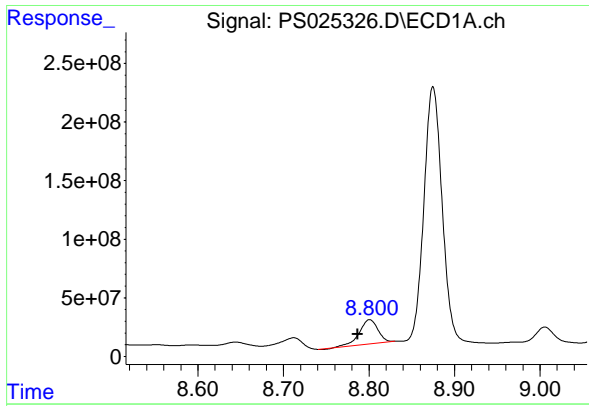
#12 2,4,5-T

R.T.: 8.296 min
 Delta R.T.: 0.014 min
 Response: 186012364
 Conc: 12.40 ng/ml



#12 2,4,5-T

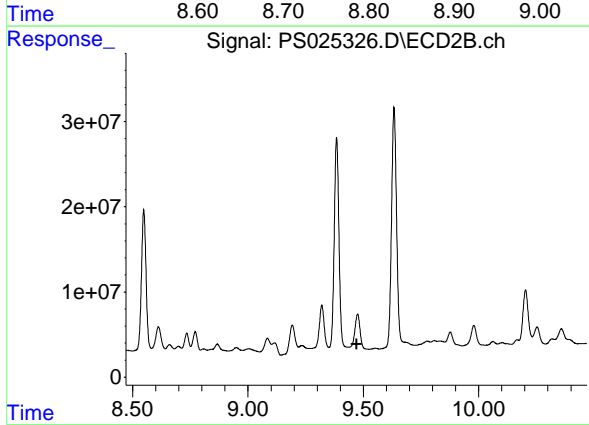
R.T.: 8.949 min
 Delta R.T.: -0.018 min
 Response: 4359857
 Conc: 1.02 ng/ml



#13 2,4-DB

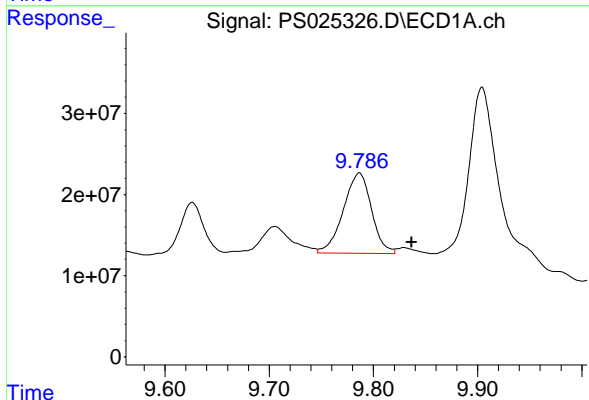
R.T.: 8.801 min
 Delta R.T.: 0.014 min
 Response: 309409021
 Conc: 128.31 ng/ml

Instrument : ECD_S
 ClientSampleId : GH-SS-23



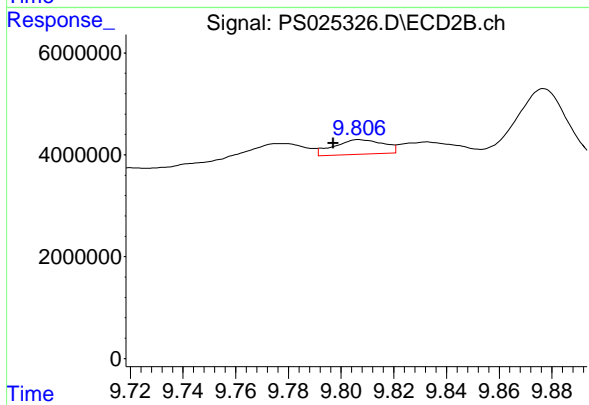
#13 2,4-DB

R.T.: 9.475 min
 Delta R.T.: 0.005 min
 Response: -216234173
 Conc: N.D.



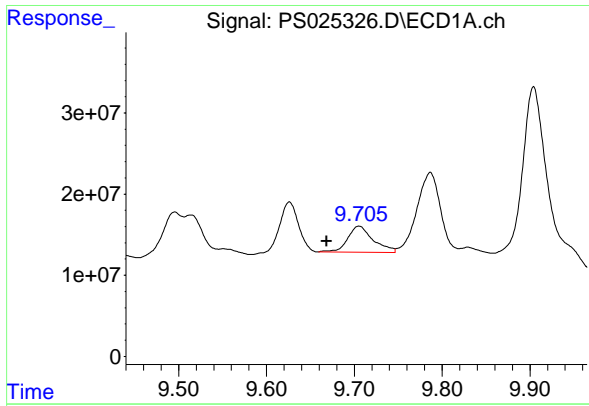
#14 DINOSEB

R.T.: 9.786 min
 Delta R.T.: -0.050 min
 Response: 185700749
 Conc: 16.16 ng/ml



#14 DINOSEB

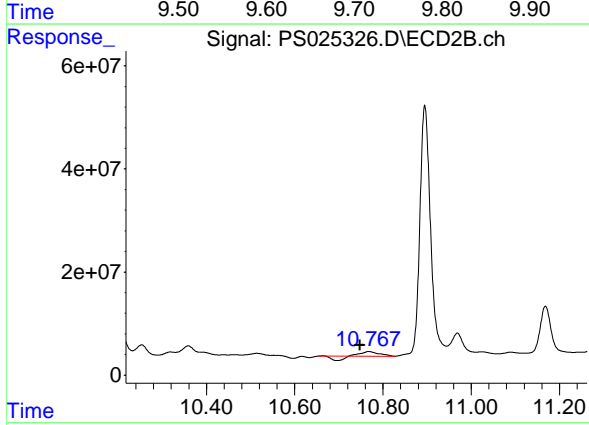
R.T.: 9.808 min
 Delta R.T.: 0.010 min
 Response: 3747039
 Conc: 1.18 ng/ml



#15 Picloram

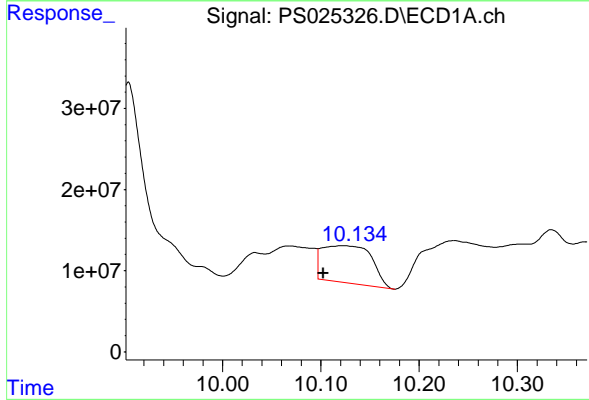
R.T.: 9.705 min
 Delta R.T.: 0.037 min
 Response: 65160293
 Conc: 3.12 ng/ml

Instrument :
 ECD_S
 ClientSampleId :
 GHL-SS-23



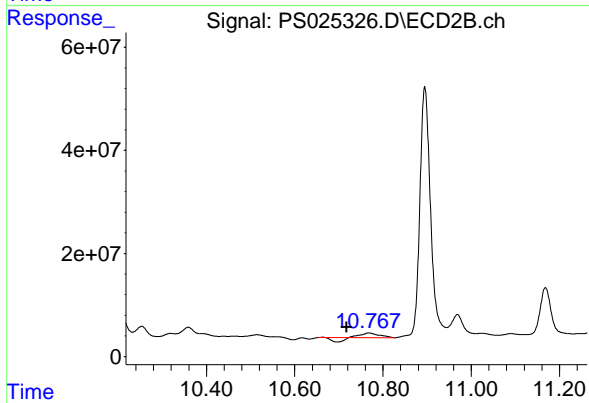
#15 Picloram

R.T.: 10.768 min
 Delta R.T.: 0.020 min
 Response: 11225210
 Conc: 1.65 ng/ml



#16 DCPA

R.T.: 10.123 min
 Delta R.T.: 0.021 min
 Response: 159770868
 Conc: 8.41 ng/ml



#16 DCPA

R.T.: 10.768 min
 Delta R.T.: 0.051 min
 Response: 11225210
 Conc: 2.10 ng/ml