

Data Path : Z:\pestpcbsrv\HPCHEM1\ECD\_S\Data\PS122923\  
 Data File : PS025372.D  
 Signal(s) : Signal #1: ECD1A.ch Signal #2: ECD2B.ch  
 Acq On : 30 Dec 2023 23:48  
 Operator : AR\AJ  
 Sample : 05907-17  
 Misc :  
 ALS Vial : 58 Sample Multiplier: 1

Instrument :  
 ECD\_S  
 ClientSampleId :

Integration File signal 1: autoint1.e  
 Integration File signal 2: autoint2.e  
 Quant Time: Jan 01 00:22:37 2024  
 Quant Method : Z:\pestpcbsrv\HPCHEM1\ECD\_S\Method\PS122823.M  
 Quant Title : 8080.M  
 QLast Update : Thu Dec 28 17:23:18 2023  
 Response via : Initial Calibration  
 Integrator: ChemStation

Volume Inj. : 2 µl  
 Signal #1 Phase : Rtx-CLPesticides Signal #2 Phase: Rtx-CLPesticides2  
 Signal #1 Info : 30M x 0.32mm x0.5 Signal #2 Info : 30M x 0.32mm x 0.25µm

Compound	RT#1	RT#2	Resp#1	Resp#2	ng/ml	ng/ml
-----						
System Monitoring Compounds						
4) S 2,4-DCAA	6.350	6.762	780.5E6	225.9E6	348.300	318.315
Target Compounds						
2) T 3,5-DICHL...	5.674f	5.958	7136442	14738672	2.098	13.178 #
3) T 4-Nitroph...	6.202	6.360	35457289	5059388	22.889	10.185 #
6) T MCPP	6.660	7.008	72205595	17851060	10.732	8.943
7) T MCPA	6.709f	7.220	59009740	12291546	6.222	3.911 #
8) T DICHLORPROP	7.103	7.546	140.1E6	135.1E6	54.473	174.608 #
9) T 2,4-D	7.267	7.796	51237694	6095580	16.540	6.355 #
10) T Pentachlo...	7.501	8.263	114.8E6	82512882	3.256	7.443 #
12) T 2,4,5-T	8.286	8.974	323.4E6	140.2E6	21.562	32.849 #
13) T 2,4-DB	8.800	9.475	6366.2E6	3131.0E6	2640.105	5707.678 #
14) T DINOSEB	9.774f	9.780	14090.6E6	304.6E6	1225.870	95.898 #
15) T Picloram	9.702	10.766	32500.6E6	489.7E6	1555.596	71.872 #
16) T DCPA	10.129	10.766f	2355.1E6	489.7E6	123.927	91.697 #

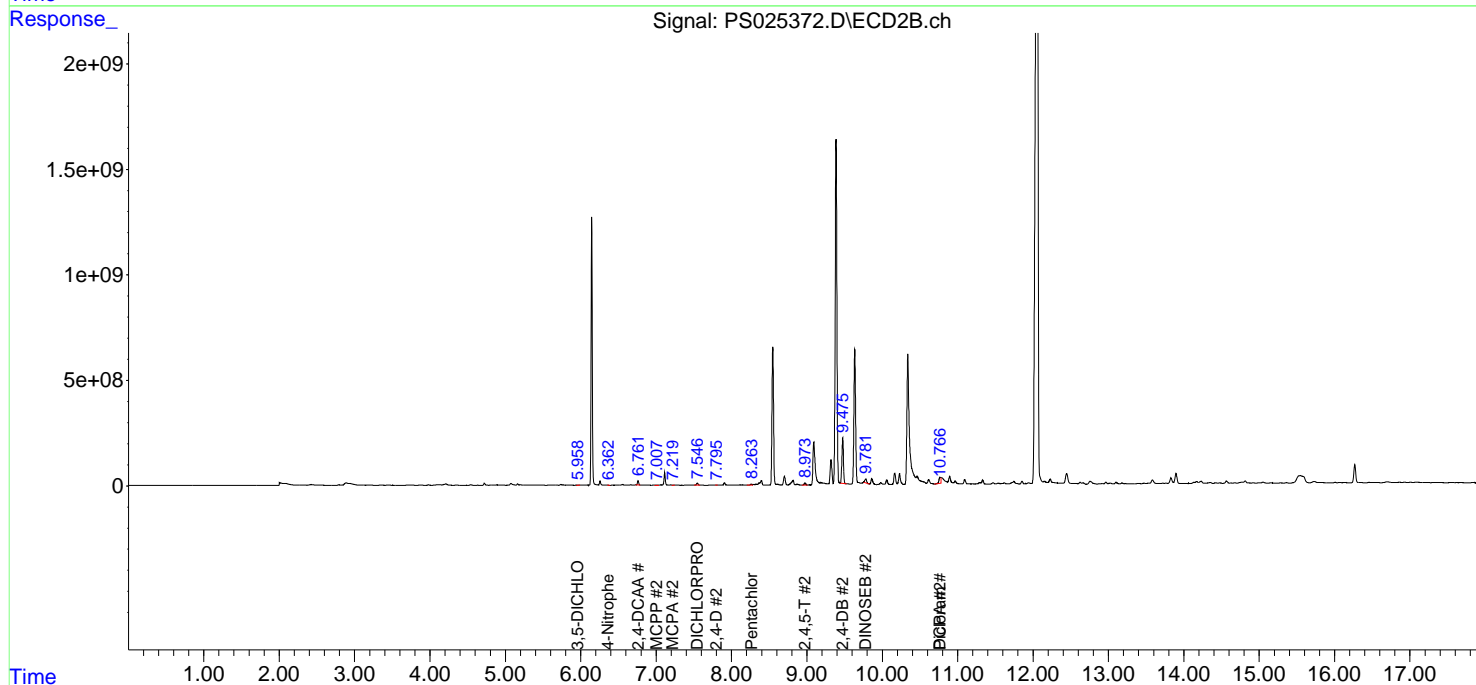
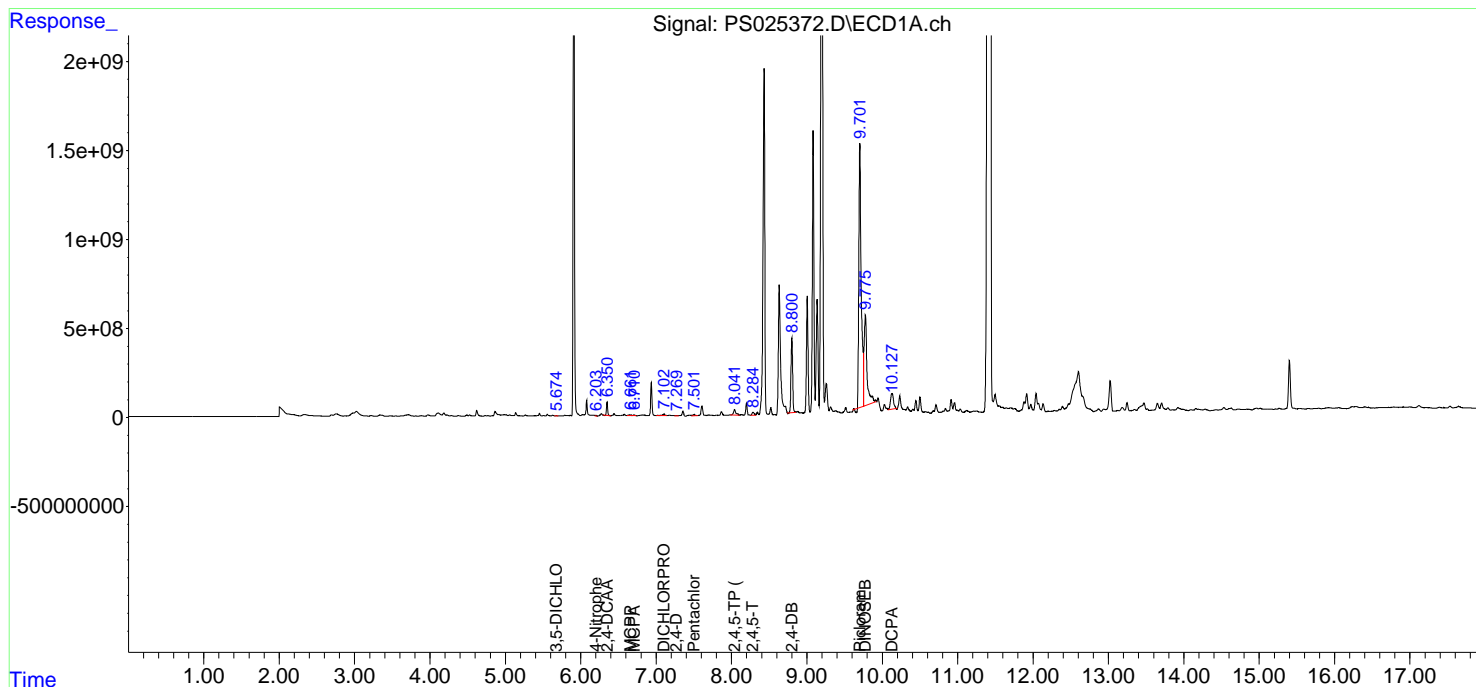
(f)=RT Delta > 1/2 Window (#)=Amounts differ by > 25% (m)=manual int.

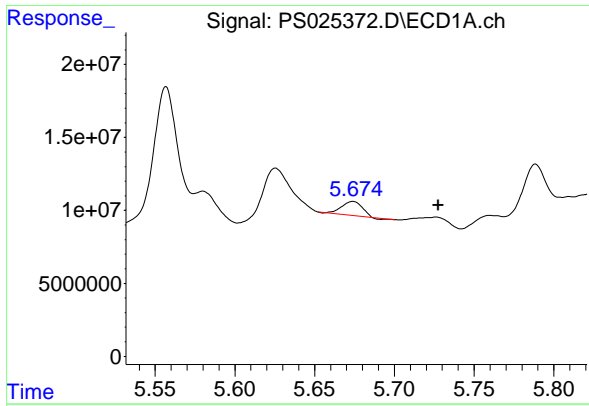
Data Path : Z:\pestpcbsrv\HPCHEM1\ECD\_S\Data\PS122923\  
 Data File : PS025372.D  
 Signal(s) : Signal #1: ECD1A.ch Signal #2: ECD2B.ch  
 Acq On : 30 Dec 2023 23:48  
 Operator : AR\AJ  
 Sample : 05907-17  
 Misc :  
 ALS Vial : 58 Sample Multiplier: 1

Instrument :  
 ECD\_S  
 ClientSampleId :

Integration File signal 1: autoint1.e  
 Integration File signal 2: autoint2.e  
 Quant Time: Jan 01 00:22:37 2024  
 Quant Method : Z:\pestpcbsrv\HPCHEM1\ECD\_S\Method\PS122823.M  
 Quant Title : 8080.M  
 QLast Update : Thu Dec 28 17:23:18 2023  
 Response via : Initial Calibration  
 Integrator: ChemStation

Volume Inj. : 2 µl  
 Signal #1 Phase : Rtx-CLPesticides Signal #2 Phase: Rtx-CLPesticides2  
 Signal #1 Info : 30M x 0.32mm x0.5 Signal #2 Info : 30M x 0.32mm x 0.25µm

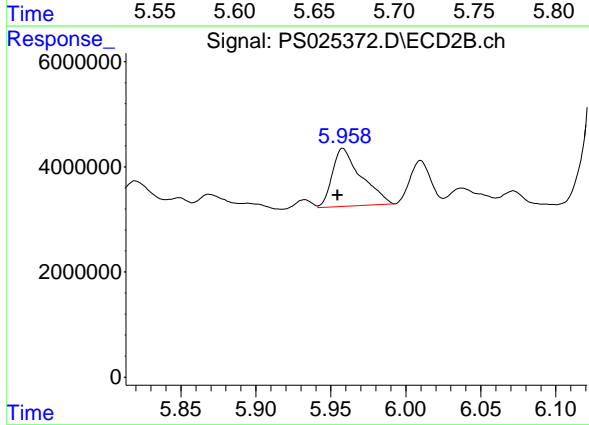




#2 3,5-DICHLOROBENZOIC ACID

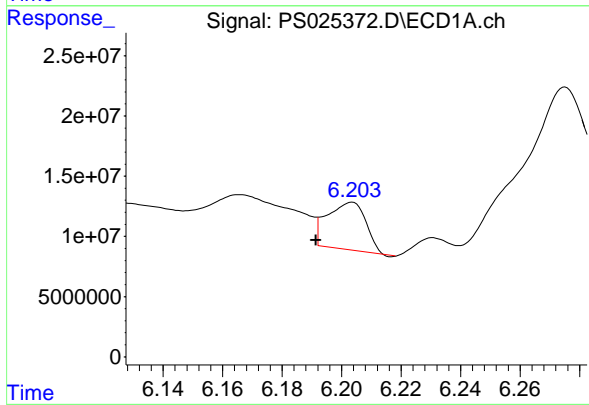
R.T.: 5.674 min  
 Delta R.T.: -0.054 min  
 Response: 7136442  
 Conc: 2.10 ng/ml

Instrument :  
 ECD\_S  
 ClientSampleId :



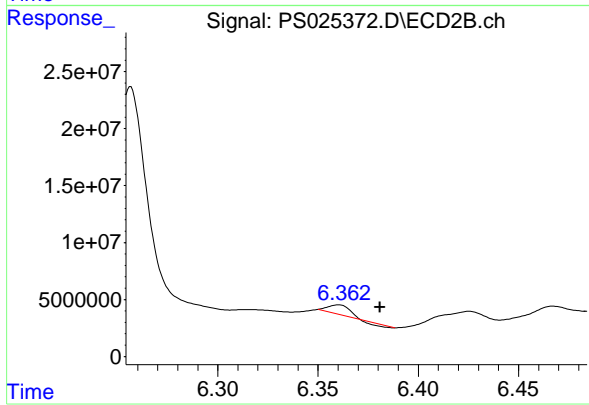
#2 3,5-DICHLOROBENZOIC ACID

R.T.: 5.958 min  
 Delta R.T.: 0.004 min  
 Response: 14738672  
 Conc: 13.18 ng/ml



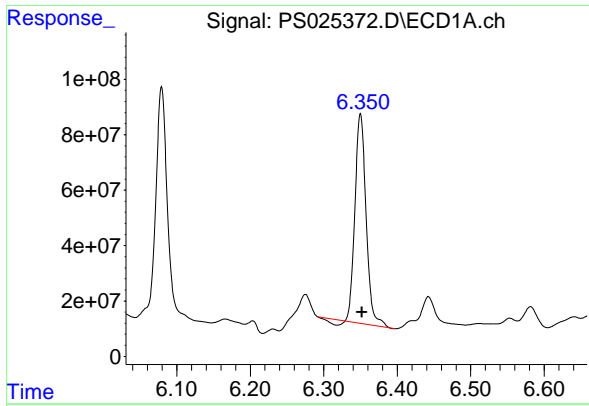
#3 4-Nitrophenol

R.T.: 6.202 min  
 Delta R.T.: 0.011 min  
 Response: 35457289  
 Conc: 22.89 ng/ml



#3 4-Nitrophenol

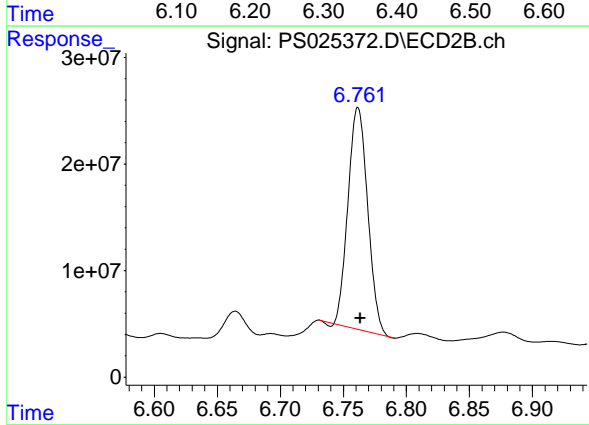
R.T.: 6.360 min  
 Delta R.T.: -0.020 min  
 Response: 5059388  
 Conc: 10.19 ng/ml



#4 2,4-DCAA

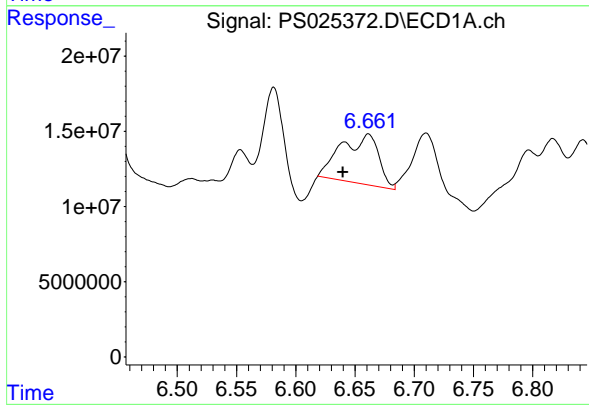
R.T.: 6.350 min  
 Delta R.T.: -0.002 min  
 Response: 780471170  
 Conc: 348.30 ng/ml

Instrument :  
 ECD\_S  
 ClientSampleId :



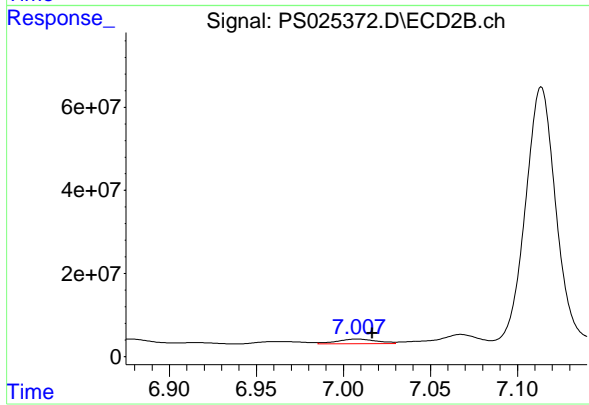
#4 2,4-DCAA

R.T.: 6.762 min  
 Delta R.T.: -0.002 min  
 Response: 225931303  
 Conc: 318.31 ng/ml



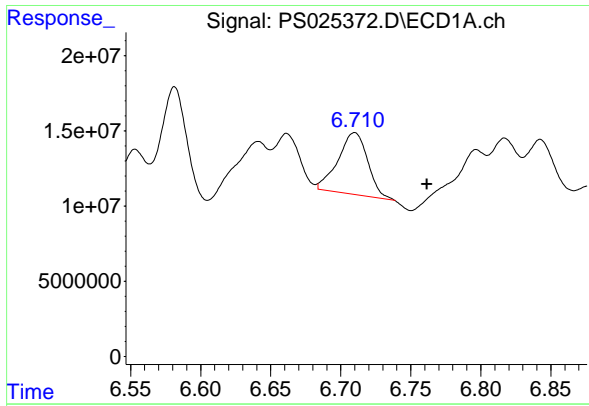
#6 MCPP

R.T.: 6.660 min  
 Delta R.T.: 0.020 min  
 Response: 72205595  
 Conc: 10.73 ug/ml



#6 MCPP

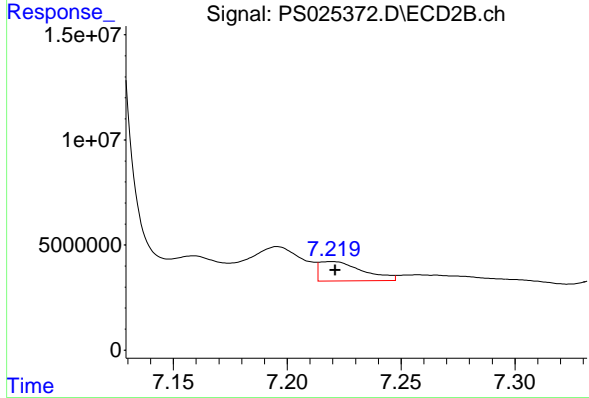
R.T.: 7.008 min  
 Delta R.T.: -0.009 min  
 Response: 17851060  
 Conc: 8.94 ug/ml



#7 MCPA

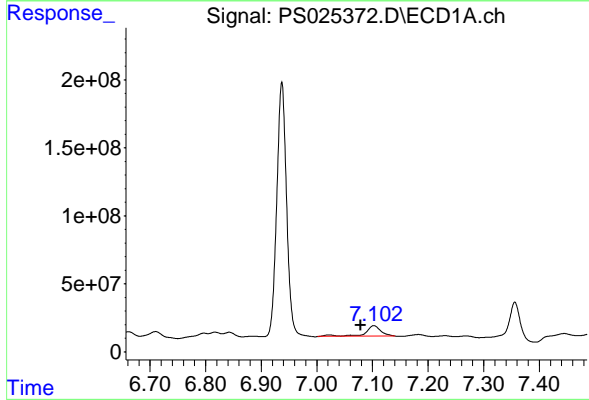
R.T.: 6.709 min  
 Delta R.T.: -0.052 min  
 Response: 59009740  
 Conc: 6.22 ug/ml

Instrument :  
 ECD\_S  
 ClientSampleId :



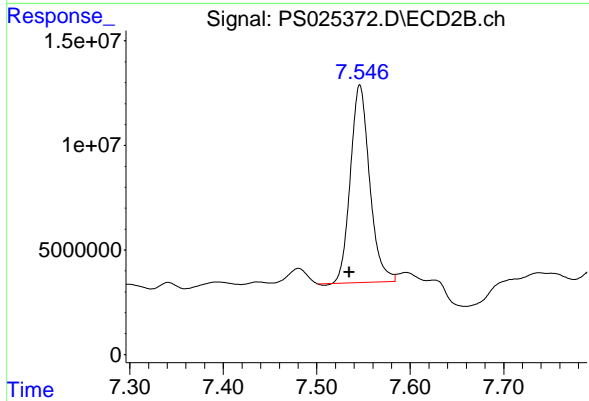
#7 MCPA

R.T.: 7.220 min  
 Delta R.T.: -0.002 min  
 Response: 12291546  
 Conc: 3.91 ug/ml



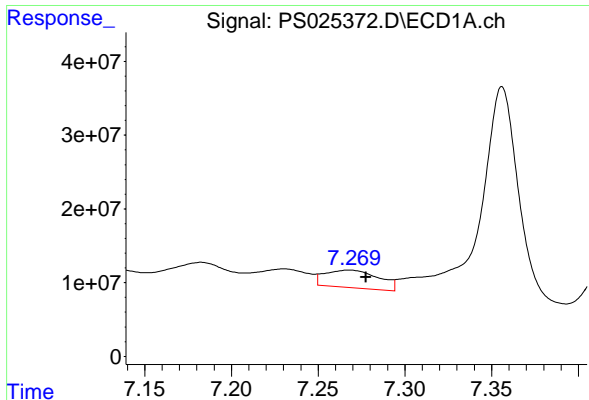
#8 DICHLORPROP

R.T.: 7.103 min  
 Delta R.T.: 0.024 min  
 Response: 140137246  
 Conc: 54.47 ng/ml



#8 DICHLORPROP

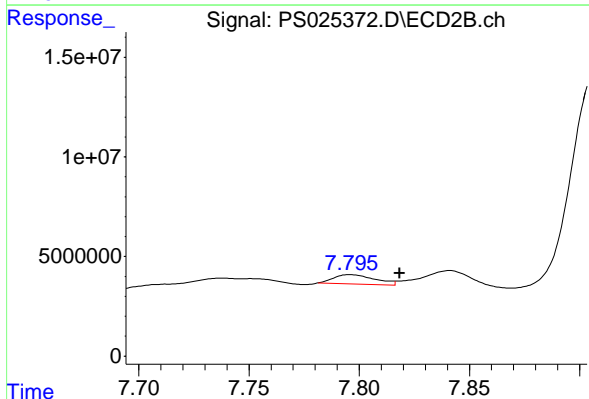
R.T.: 7.546 min  
 Delta R.T.: 0.011 min  
 Response: 135064983  
 Conc: 174.61 ng/ml



#9 2,4-D

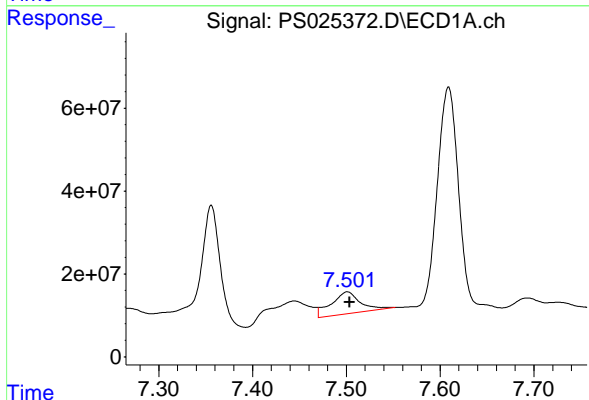
R.T.: 7.267 min  
 Delta R.T.: -0.010 min  
 Response: 51237694  
 Conc: 16.54 ng/ml

Instrument :  
 ECD\_S  
 ClientSampleId :



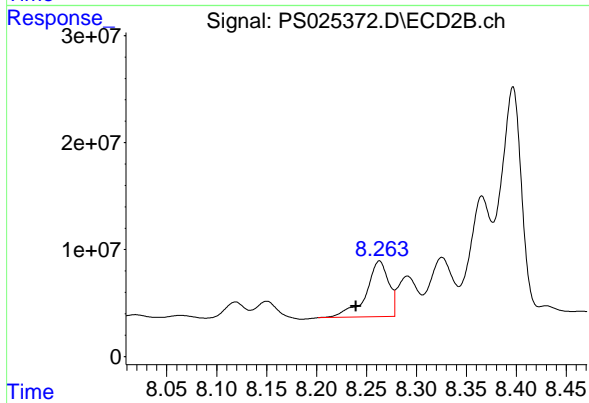
#9 2,4-D

R.T.: 7.796 min  
 Delta R.T.: -0.022 min  
 Response: 6095580  
 Conc: 6.36 ng/ml



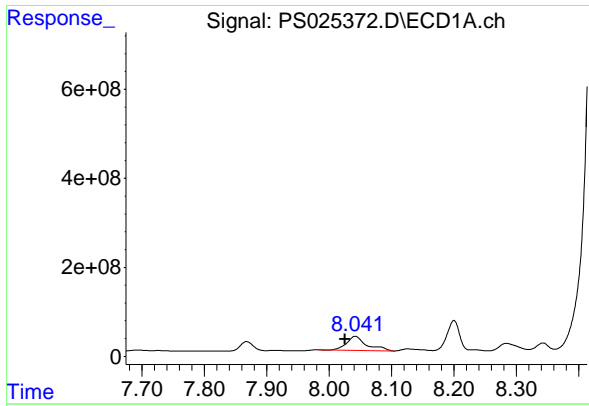
#10 Pentachlorophenol

R.T.: 7.501 min  
 Delta R.T.: -0.003 min  
 Response: 114762000  
 Conc: 3.26 ng/ml



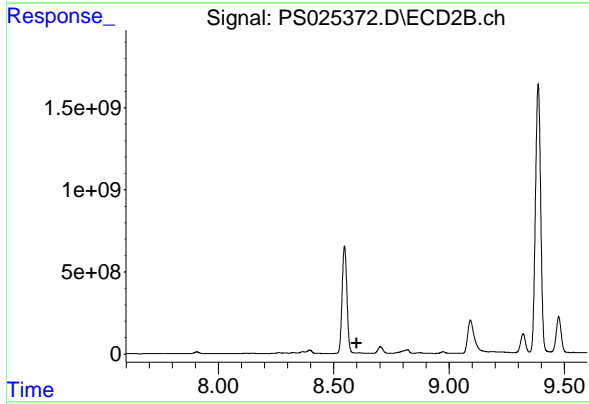
#10 Pentachlorophenol

R.T.: 8.263 min  
 Delta R.T.: 0.024 min  
 Response: 82512882  
 Conc: 7.44 ng/ml

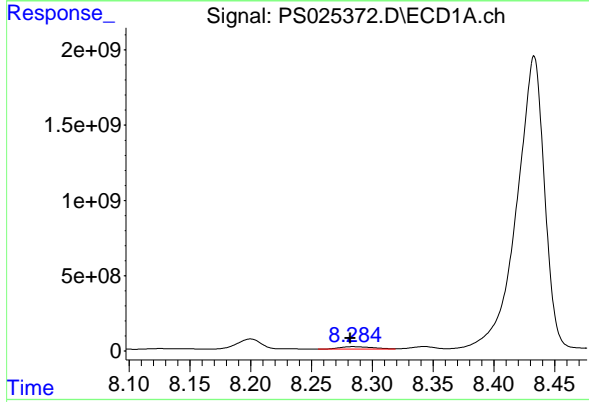


#11 2,4,5-TP (SILVEX)  
 R.T.: 8.042 min  
 Delta R.T.: 0.016 min  
 Response: 696908021  
 Conc: 45.86 ng/ml

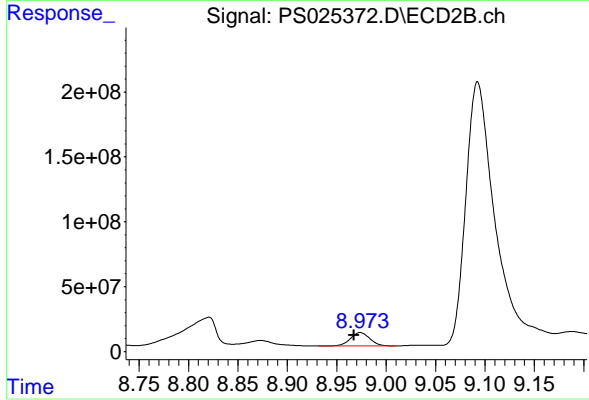
Instrument :  
 ECD\_S  
 ClientSampleId :



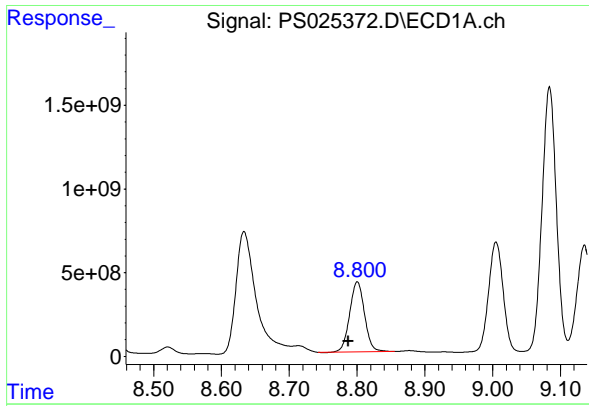
#11 2,4,5-TP (SILVEX)  
 R.T.: 8.610 min  
 Delta R.T.: 0.012 min  
 Response: -403040068  
 Conc: N.D.



#12 2,4,5-T  
 R.T.: 8.286 min  
 Delta R.T.: 0.004 min  
 Response: 323405795  
 Conc: 21.56 ng/ml



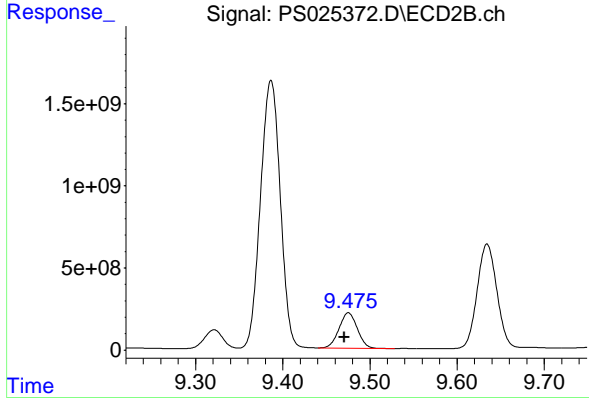
#12 2,4,5-T  
 R.T.: 8.974 min  
 Delta R.T.: 0.007 min  
 Response: 140199815  
 Conc: 32.85 ng/ml



#13 2,4-DB

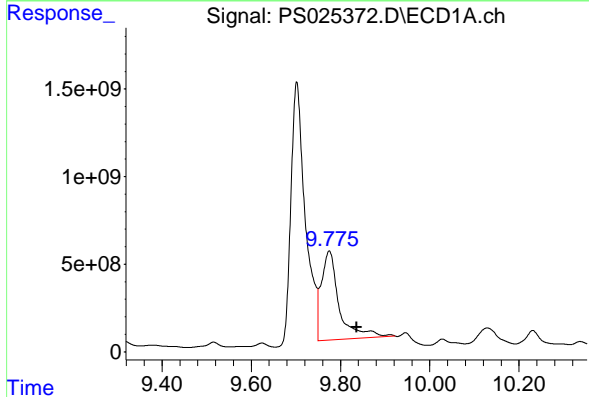
R.T.: 8.800 min  
 Delta R.T.: 0.013 min  
 Response: 6366220990  
 Conc: 2640.11 ng/ml

Instrument :  
 ECD\_S  
 ClientSampleId :



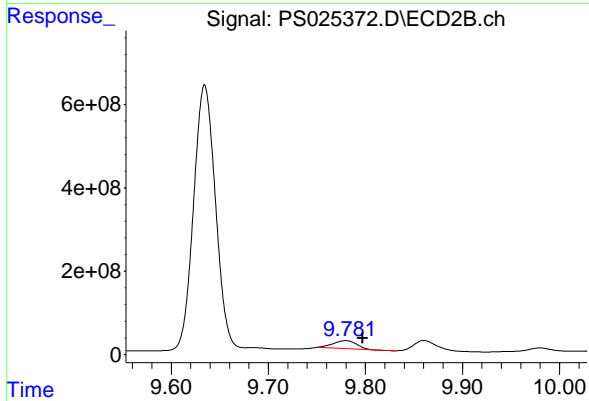
#13 2,4-DB

R.T.: 9.475 min  
 Delta R.T.: 0.005 min  
 Response: 3131022333  
 Conc: 5707.68 ng/ml



#14 DINOSEB

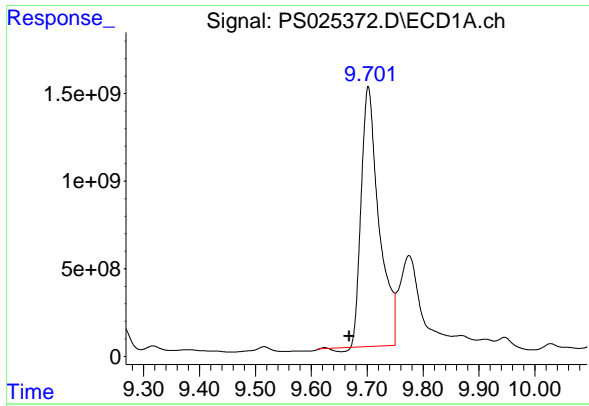
R.T.: 9.774 min  
 Delta R.T.: -0.062 min  
 Response: 14090562423  
 Conc: 1225.87 ng/ml



#14 DINOSEB

R.T.: 9.780 min  
 Delta R.T.: -0.017 min  
 Response: 304570945  
 Conc: 95.90 ng/ml

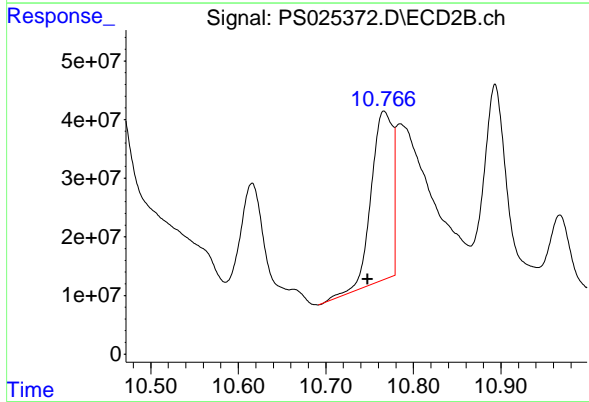




#15 Picloram

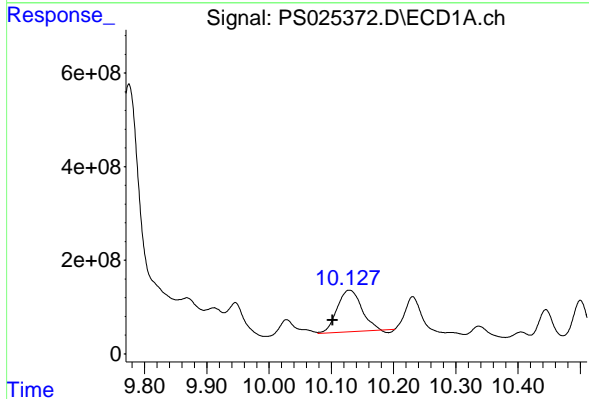
R.T.: 9.702 min  
 Delta R.T.: 0.034 min  
 Response: 32500605700  
 Conc: 1555.60 ng/ml

Instrument :  
 ECD\_S  
 ClientSampleId :



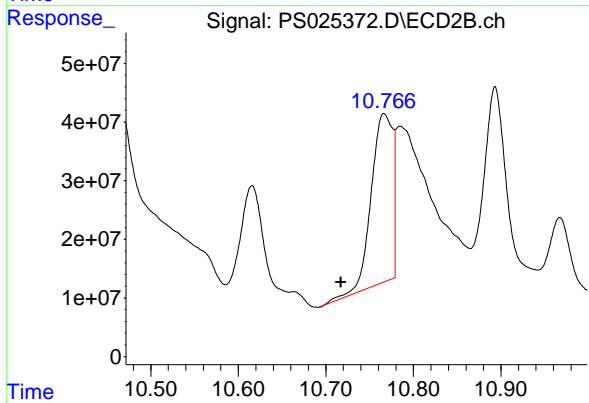
#15 Picloram

R.T.: 10.766 min  
 Delta R.T.: 0.019 min  
 Response: 489688682  
 Conc: 71.87 ng/ml



#16 DCPA

R.T.: 10.129 min  
 Delta R.T.: 0.027 min  
 Response: 2355065153  
 Conc: 123.93 ng/ml



#16 DCPA

R.T.: 10.766 min  
 Delta R.T.: 0.049 min  
 Response: 489688682  
 Conc: 91.70 ng/ml