

Data Path : Z:\pestpcbsrv\HPCHEM1\ECD_S\Data\PS123021\
 Data File : PS017883.D
 Signal(s) : Signal #1: ECD1A.ch Signal #2: ECD2B.ch
 Acq On : 30 Dec 2021 23:46
 Operator : AJ\MA
 Sample : M5257-06
 Misc :
 ALS Vial : 37 Sample Multiplier: 1

Instrument :
 ECD_S
 ClientSampleId :

Integration File signal 1: autoint1.e
 Integration File signal 2: autoint2.e
 Quant Time: Dec 31 00:17:57 2021
 Quant Method : Z:\pestpcbsrv\HPCHEM1\ECD_S\Method\PS121421.M
 Quant Title : 8080.M
 QLast Update : Tue Dec 14 13:29:21 2021
 Response via : Initial Calibration
 Integrator: ChemStation

Volume Inj. : 2 µl
 Signal #1 Phase : Rtx-CLPesticides Signal #2 Phase: Rtx-CLPesticides2
 Signal #1 Info : 30M x 0.32mm x0.5 Signal #2 Info : 30M x 0.32mm x 0.25µm

	Compound	RT#1	RT#2	Resp#1	Resp#2	ng/ml	ng/ml

System Monitoring Compounds							
4) S	2,4-DCAA	7.124	6.712	535.2E6	219.5E6	342.427	368.247
Target Compounds							
1) T	Dalapon	2.940	2.447	106.8E6	173.8E6	41.691	224.482 #
2) T	3,5-DICHL...	6.318f	5.940	-1956034	29069797	N.D.	32.063
3) T	4-Nitroph...	6.959	0.000	20129501	0	29.768	N.D. #
5) T	DICAMBA	7.300	6.938f	40217504	10536210	6.360	3.955 #
6) T	MCP P	7.472	6.938	2872785	10536210	<MDL	4.841 #
7) T	MCPA	7.631	0.000	1837776	0	<MDL	N.D. #
8) T	DICHLORPROP	8.061f	0.000	6818568	0	4.364	N.D. #
9) T	2,4-D	8.202	0.000	3145158	0	1.779	N.D. #
10) T	Pentachlo...	8.504	8.185	5188396	7204937	<MDL	<MDL #
11) T	2,4,5-TP ...	9.065	8.510f	173.3E6	983633	20.374	<MDL #
12) T	2,4,5-T	9.386	9.003f	49572204	11567549	5.698	3.383 #
13) T	2,4-DB	9.929	0.000	8678092	0	5.877	N.D. #
14) T	DINOSEB	11.031	9.801	62128371	49493791	9.086	19.157 #
15) T	Picloram	10.866	10.764	39615290	27441567	3.651	5.587 #
16) T	DCPA	11.329	10.678	20417435	9046677	1.880	2.020

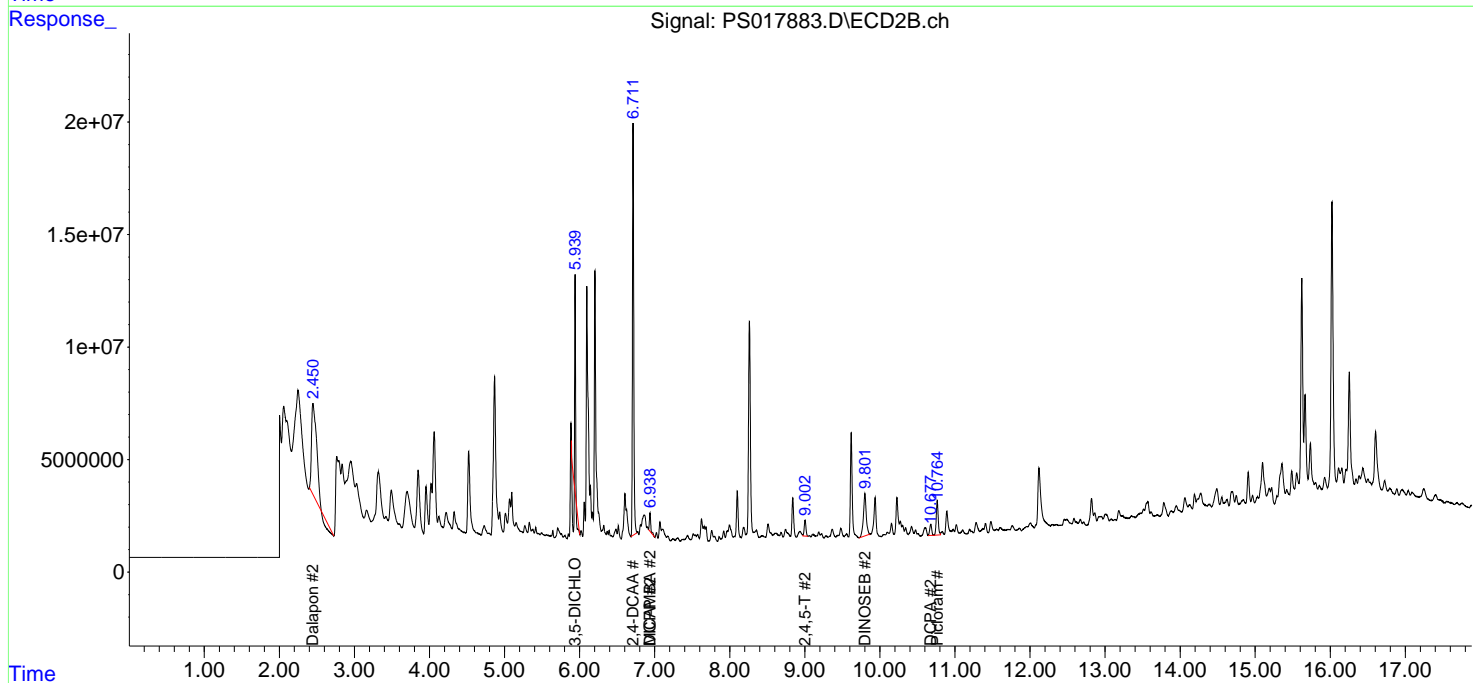
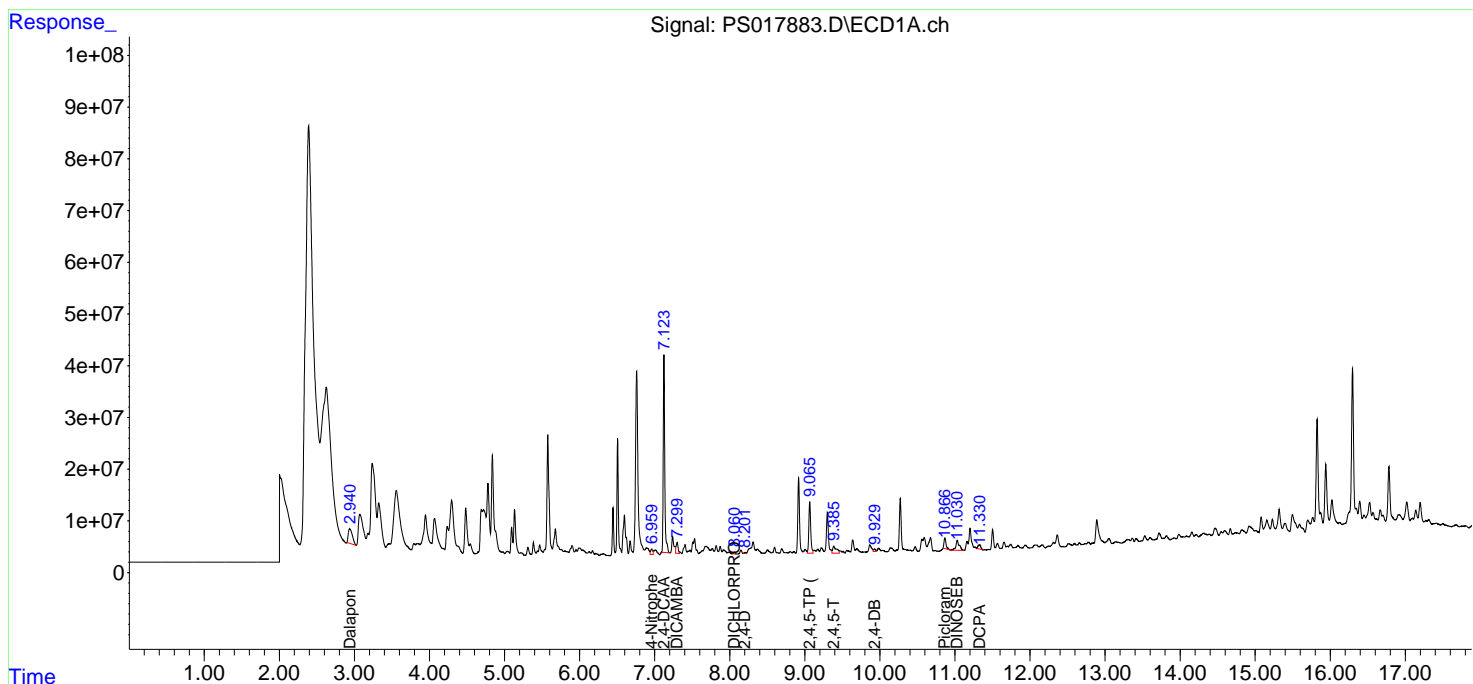
(f)=RT Delta > 1/2 Window (#)=Amounts differ by > 25% (m)=manual int.

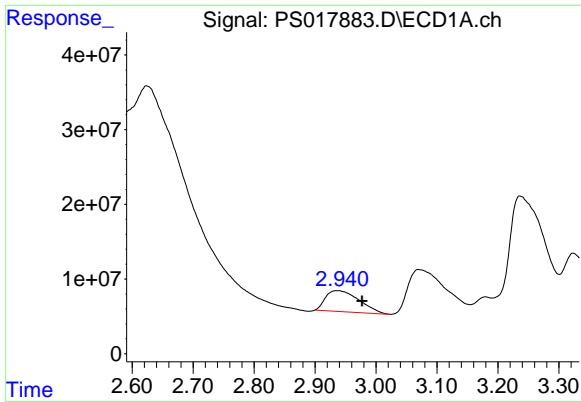
Data Path : Z:\pestpcbsrv\HPCHEM1\ECD_S\Data\PS123021\
 Data File : PS017883.D
 Signal(s) : Signal #1: ECD1A.ch Signal #2: ECD2B.ch
 Acq On : 30 Dec 2021 23:46
 Operator : AJ\MA
 Sample : M5257-06
 Misc :
 ALS Vial : 37 Sample Multiplier: 1

Instrument :
 ECD_S
 ClientSampleId :

Integration File signal 1: autoint1.e
 Integration File signal 2: autoint2.e
 Quant Time: Dec 31 00:17:57 2021
 Quant Method : Z:\pestpcbsrv\HPCHEM1\ECD_S\Method\PS121421.M
 Quant Title : 8080.M
 QLast Update : Tue Dec 14 13:29:21 2021
 Response via : Initial Calibration
 Integrator: ChemStation

Volume Inj. : 2 µl
 Signal #1 Phase : Rtx-CLPesticides Signal #2 Phase: Rtx-CLPesticides2
 Signal #1 Info : 30M x 0.32mm x0.5 Signal #2 Info : 30M x 0.32mm x 0.25µm

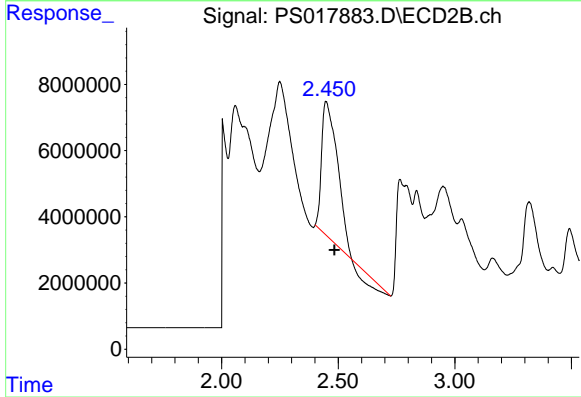




#1 Dalapon

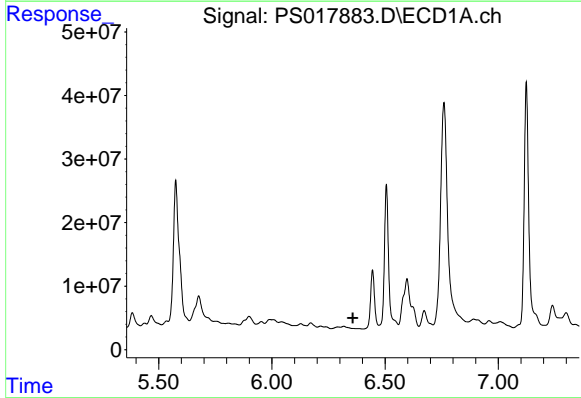
R.T.: 2.940 min
 Delta R.T.: -0.037 min
 Response: 106838542
 Conc: 41.69 ng/ml

Instrument :
 ECD_S
 ClientSampleId :



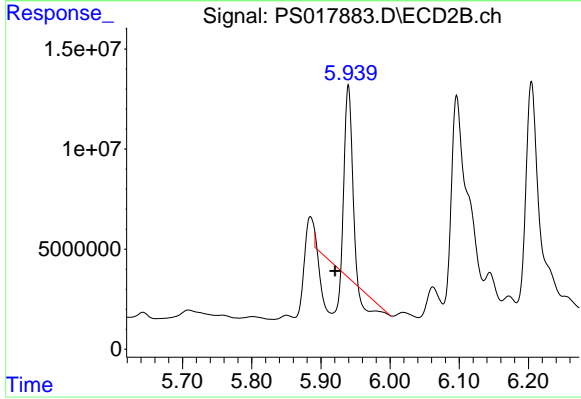
#1 Dalapon

R.T.: 2.447 min
 Delta R.T.: -0.036 min
 Response: 173771135
 Conc: 224.48 ng/ml



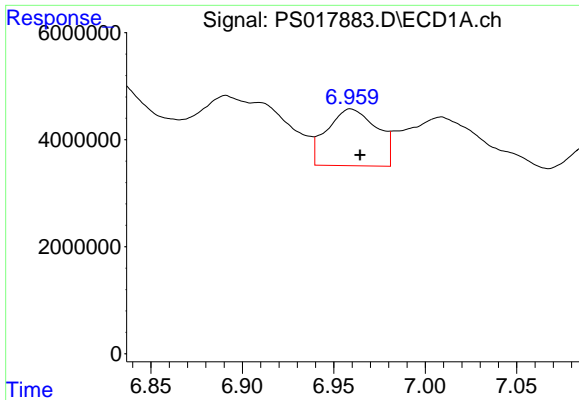
#2 3,5-DICHLOROBENZOIC ACID

R.T.: 6.318 min
 Delta R.T.: -0.040 min
 Response: -1956034
 Conc: N.D.



#2 3,5-DICHLOROBENZOIC ACID

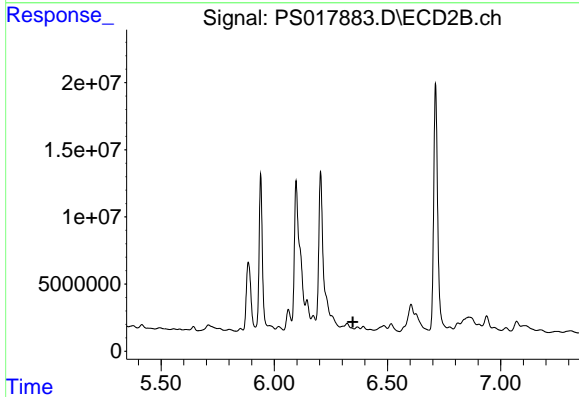
R.T.: 5.940 min
 Delta R.T.: 0.019 min
 Response: 29069797
 Conc: 32.06 ng/ml



#3 4-Nitrophenol

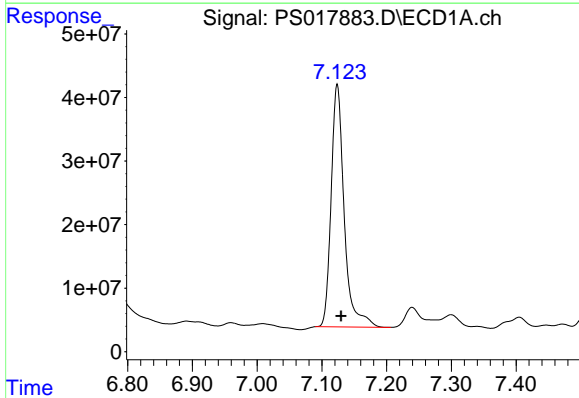
R.T.: 6.959 min
 Delta R.T.: -0.005 min
 Response: 20129501
 Conc: 29.77 ng/ml

Instrument :
 ECD_S
 ClientSampleId :



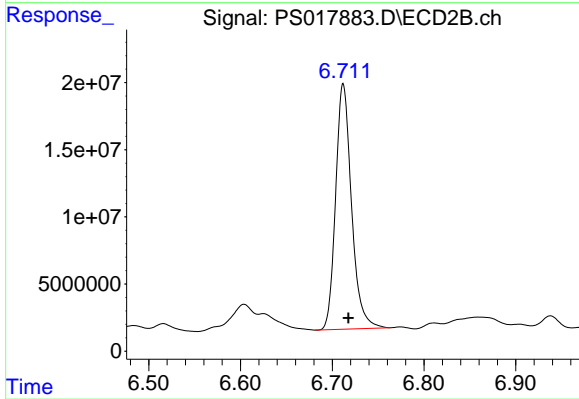
#3 4-Nitrophenol

R.T.: 0.000 min
 Exp R.T. : 6.347 min
 Response: 0
 Conc: N.D.



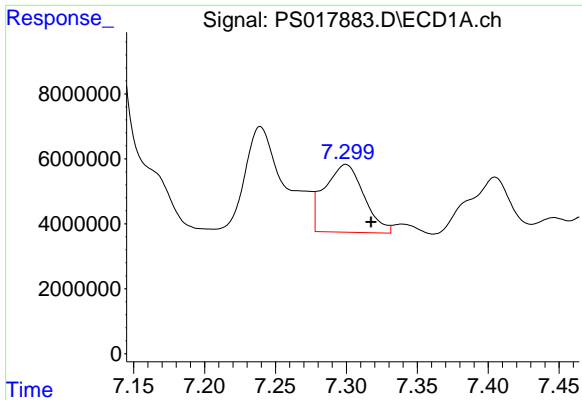
#4 2,4-DCAA

R.T.: 7.124 min
 Delta R.T.: -0.006 min
 Response: 535194365
 Conc: 342.43 ng/ml



#4 2,4-DCAA

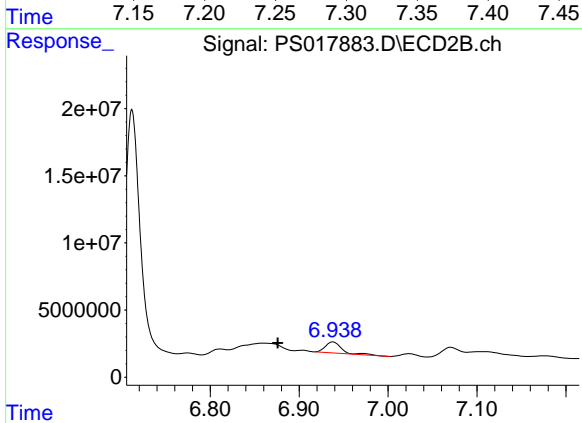
R.T.: 6.712 min
 Delta R.T.: -0.006 min
 Response: 219512815
 Conc: 368.25 ng/ml



#5 DICAMBA

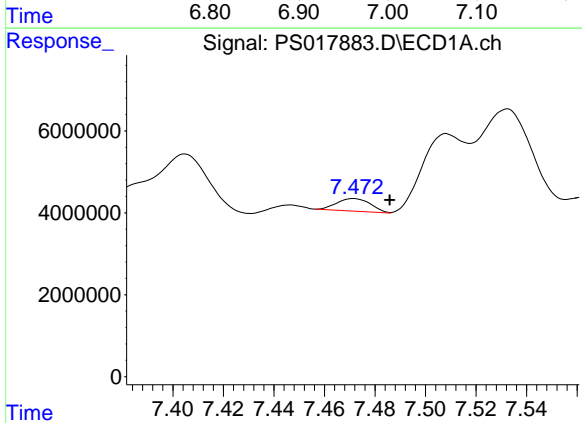
R.T.: 7.300 min
 Delta R.T.: -0.018 min
 Response: 40217504
 Conc: 6.36 ng/ml

Instrument :
 ECD_S
 ClientSampleId :



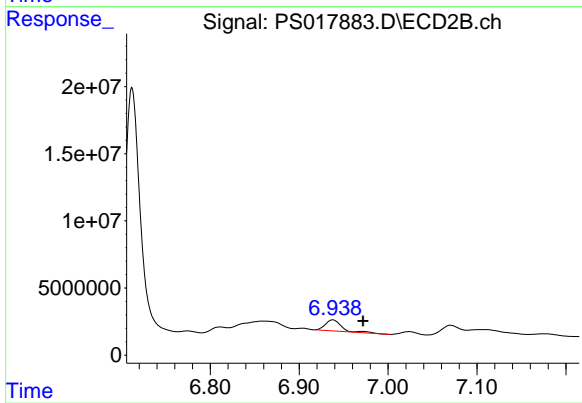
#5 DICAMBA

R.T.: 6.938 min
 Delta R.T.: 0.062 min
 Response: 10536210
 Conc: 3.96 ng/ml



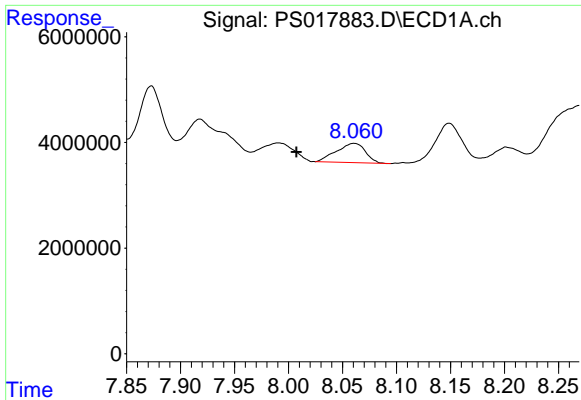
#6 MCP

R.T.: 7.472 min
 Delta R.T.: -0.014 min
 Response: 2872785
 Conc: N.D.



#6 MCP

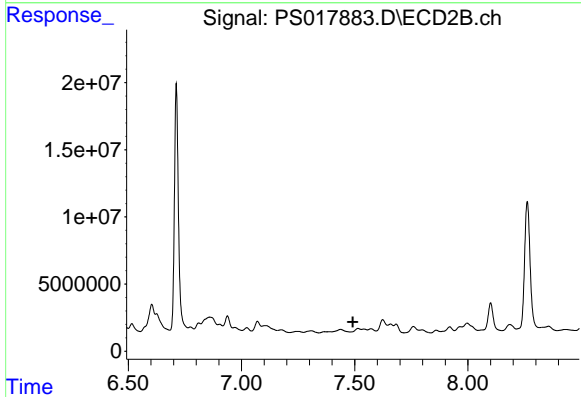
R.T.: 6.938 min
 Delta R.T.: -0.034 min
 Response: 10536210
 Conc: 4.84 ug/ml



#8 DICHLORPROP

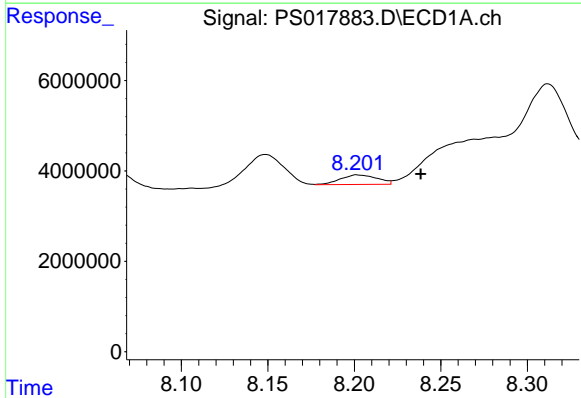
R.T.: 8.061 min
 Delta R.T.: 0.053 min
 Response: 6818568
 Conc: 4.36 ng/ml

Instrument :
 ECD_S
 ClientSampleId :



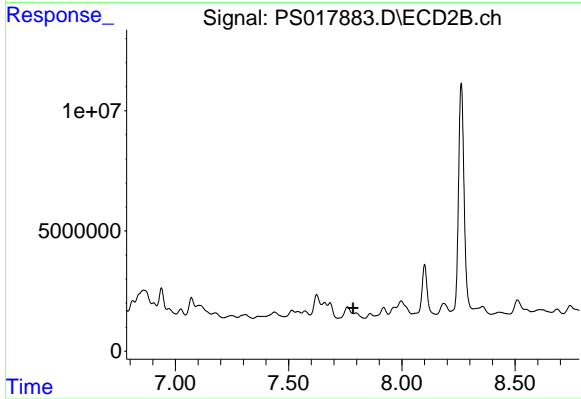
#8 DICHLORPROP

R.T.: 0.000 min
 Exp R.T. : 7.492 min
 Response: 0
 Conc: N.D.



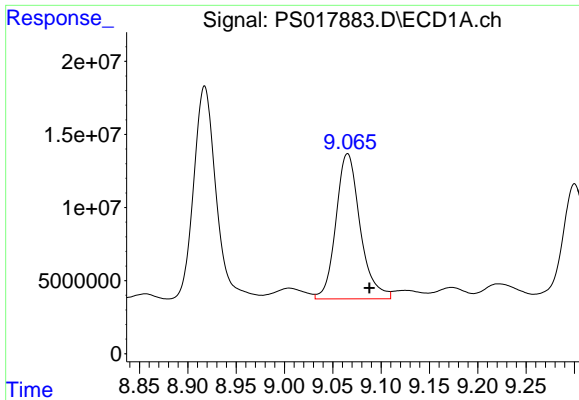
#9 2,4-D

R.T.: 8.202 min
 Delta R.T.: -0.037 min
 Response: 3145158
 Conc: 1.78 ng/ml



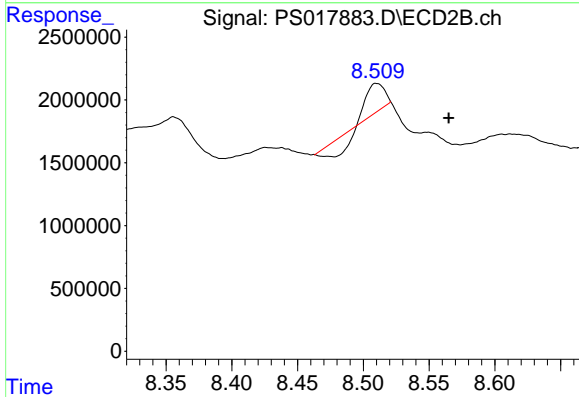
#9 2,4-D

R.T.: 0.000 min
 Exp R.T. : 7.784 min
 Response: 0
 Conc: N.D.

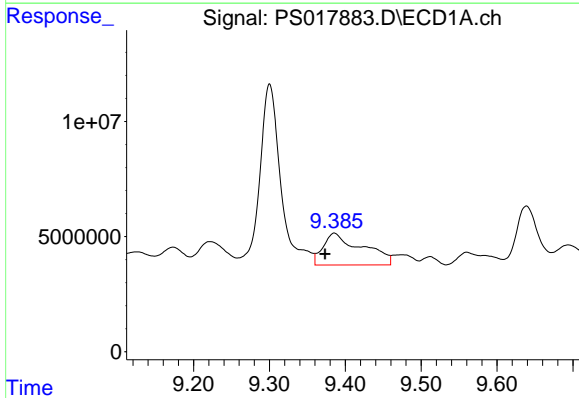


#11 2,4,5-TP (SILVEX)
 R.T.: 9.065 min
 Delta R.T.: -0.023 min
 Response: 173319802
 Conc: 20.37 ng/ml

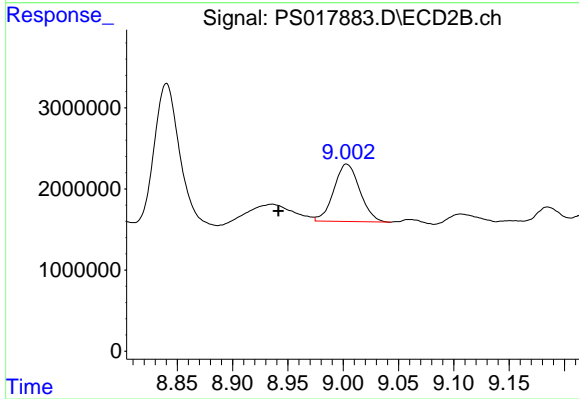
Instrument :
 ECD_S
 ClientSampleId :



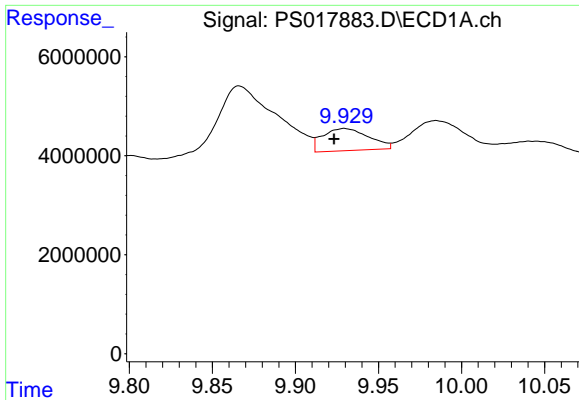
#11 2,4,5-TP (SILVEX)
 R.T.: 8.510 min
 Delta R.T.: -0.054 min
 Response: 983633
 Conc: N.D.



#12 2,4,5-T
 R.T.: 9.386 min
 Delta R.T.: 0.012 min
 Response: 49572204
 Conc: 5.70 ng/ml



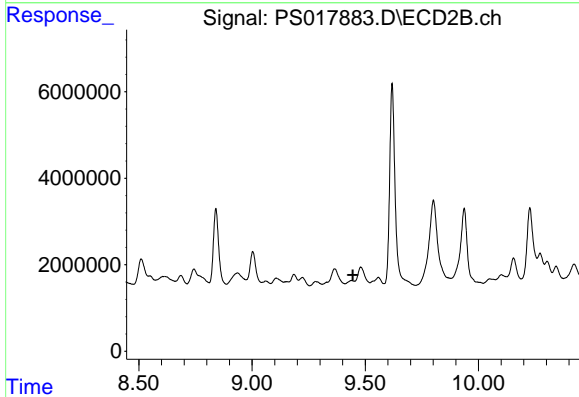
#12 2,4,5-T
 R.T.: 9.003 min
 Delta R.T.: 0.062 min
 Response: 11567549
 Conc: 3.38 ng/ml



#13 2,4-DB

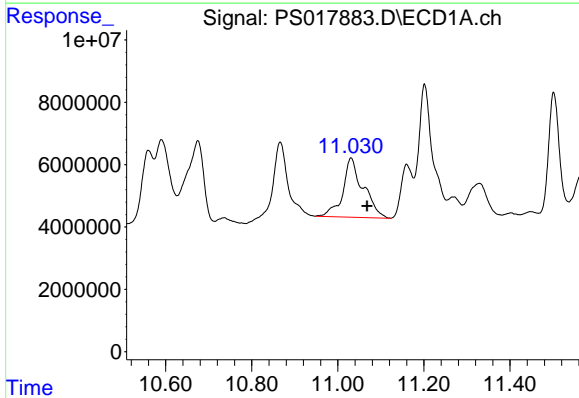
R.T.: 9.929 min
 Delta R.T.: 0.006 min
 Response: 8678092
 Conc: 5.88 ng/ml

Instrument :
 ECD_S
 ClientSampleId :



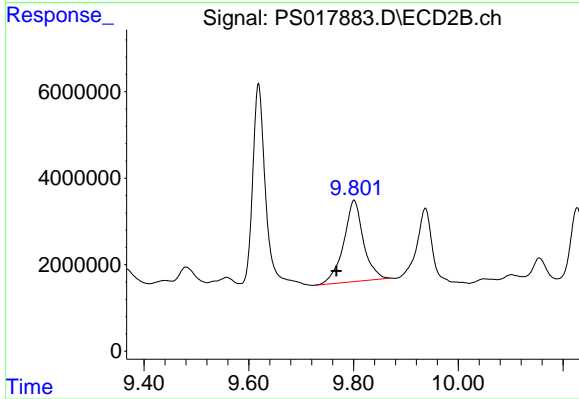
#13 2,4-DB

R.T.: 0.000 min
 Exp R.T. : 9.445 min
 Response: 0
 Conc: N.D.



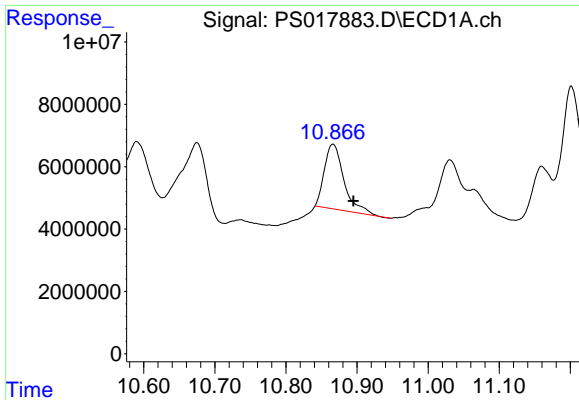
#14 DINOSEB

R.T.: 11.031 min
 Delta R.T.: -0.037 min
 Response: 62128371
 Conc: 9.09 ng/ml



#14 DINOSEB

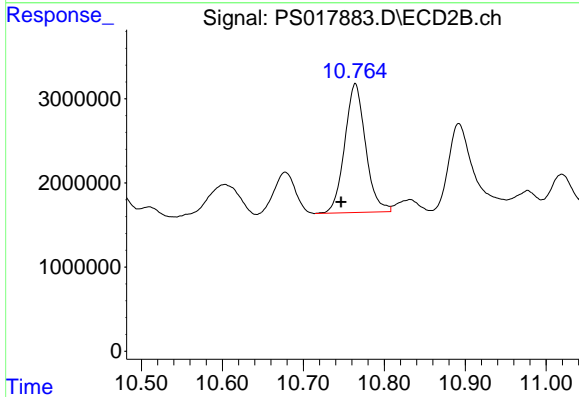
R.T.: 9.801 min
 Delta R.T.: 0.033 min
 Response: 49493791
 Conc: 19.16 ng/ml



#15 Picloram

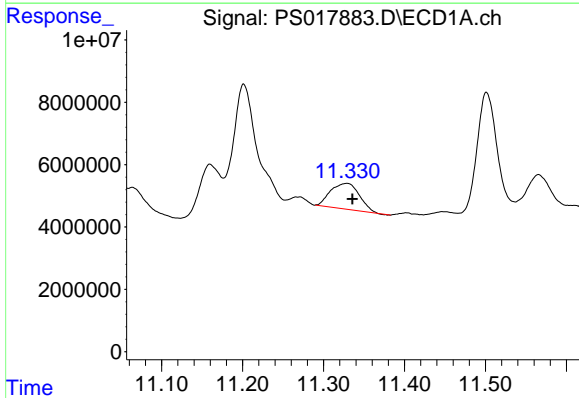
R.T.: 10.866 min
 Delta R.T.: -0.029 min
 Response: 39615290
 Conc: 3.65 ng/ml

Instrument :
 ECD_S
 ClientSampleId :



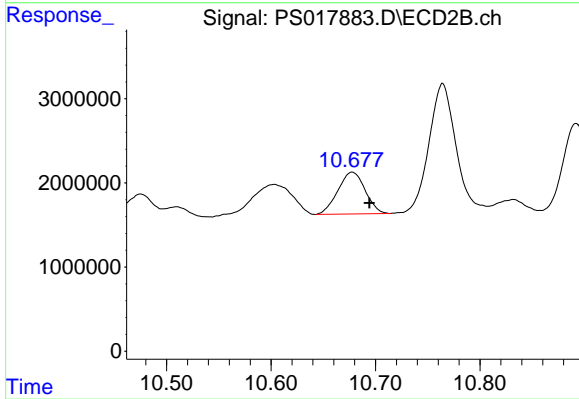
#15 Picloram

R.T.: 10.764 min
 Delta R.T.: 0.018 min
 Response: 27441567
 Conc: 5.59 ng/ml



#16 DCPA

R.T.: 11.329 min
 Delta R.T.: -0.007 min
 Response: 20417435
 Conc: 1.88 ng/ml



#16 DCPA

R.T.: 10.678 min
 Delta R.T.: -0.016 min
 Response: 9046677
 Conc: 2.02 ng/ml