

Data Path : Z:\pestpcbsrv\HPCHEM1\ECD_S\Data\PS123021\
 Data File : PS017887.D
 Signal(s) : Signal #1: ECD1A.ch Signal #2: ECD2B.ch
 Acq On : 31 Dec 2021 01:23
 Operator : AJ\MA
 Sample : HSTDCCC750
 Misc :
 ALS Vial : 3 Sample Multiplier: 1

Instrument :
 ECD_S
 ClientSampleId :

Integration File signal 1: autoint1.e
 Integration File signal 2: autoint2.e
 Quant Time: Dec 31 02:56:47 2021
 Quant Method : Z:\pestpcbsrv\HPCHEM1\ECD_S\Method\PS121421.M
 Quant Title : 8080.M
 QLast Update : Tue Dec 14 13:29:21 2021
 Response via : Initial Calibration
 Integrator: ChemStation

Volume Inj. : 2 µl
 Signal #1 Phase : Rtx-CLPesticides Signal #2 Phase: Rtx-CLPesticides2
 Signal #1 Info : 30M x 0.32mm x0.5 Signal #2 Info : 30M x 0.32mm x 0.25µm

	Compound	RT#1	RT#2	Resp#1	Resp#2	ng/ml	ng/ml

System Monitoring Compounds							
4) S	2,4-DCAA	7.126	6.715	1212.7E6	475.5E6	775.920	797.722
Target Compounds							
1) T	Dalapon	2.978	2.486	1719.7E6	546.0E6	671.065	705.382
2) T	3,5-DICHL...	6.354	5.918	1660.4E6	698.4E6	743.192	770.326
3) T	4-Nitroph...	6.961	6.350	423.4E6	251.9E6	626.054	723.235
5) T	DICAMBA	7.313	6.871	4818.7E6	2104.4E6	762.034	789.967
6) T	MCP P	7.482	6.966	355.5E6	171.8E6	75.415	78.951
7) T	MCPA	7.629	7.177	497.0E6	233.8E6	75.148	76.474
8) T	DICHLORPROP	8.002	7.488	1174.6E6	530.3E6	751.754	778.059
9) T	2,4-D	8.234	7.784	1204.1E6	624.1E6	681.073	767.560
10) T	Pentachlo...	8.533	8.196	16539.1E6	6778.2E6	766.503	791.128
11) T	2,4,5-TP ...	9.083	8.559	6504.8E6	2914.8E6	764.652	801.810
12) T	2,4,5-T	9.369	8.937	6498.5E6	2599.8E6	747.009	760.258
13) T	2,4-DB	9.919	9.441	967.8E6	331.5E6	655.395	731.705
14) T	DINOSEB	11.061	9.760	5135.3E6	2022.7E6	751.011	782.905
15) T	Picloram	10.893	10.748	6547.2E6	3006.2E6	603.359	612.083
16) T	DCPA	11.330	10.686	8401.0E6	3631.8E6	773.532	810.873

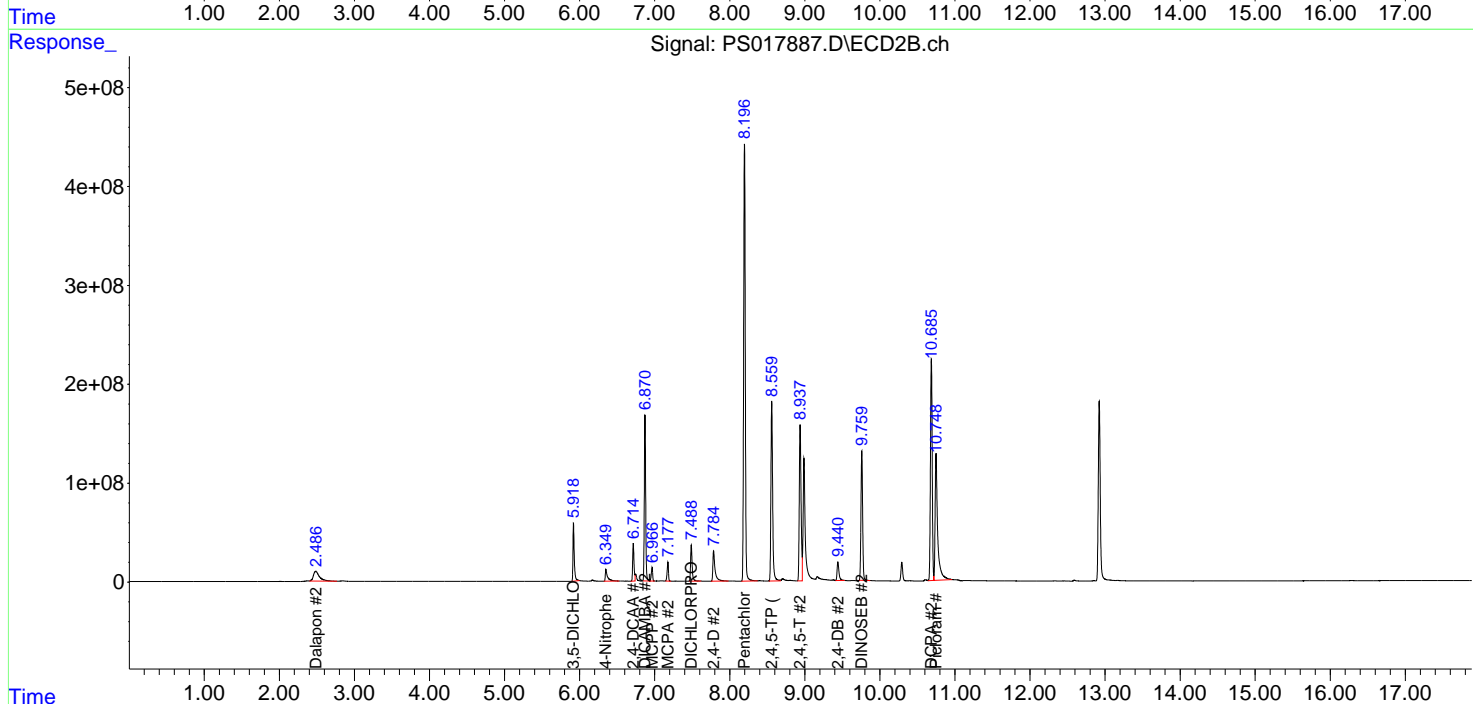
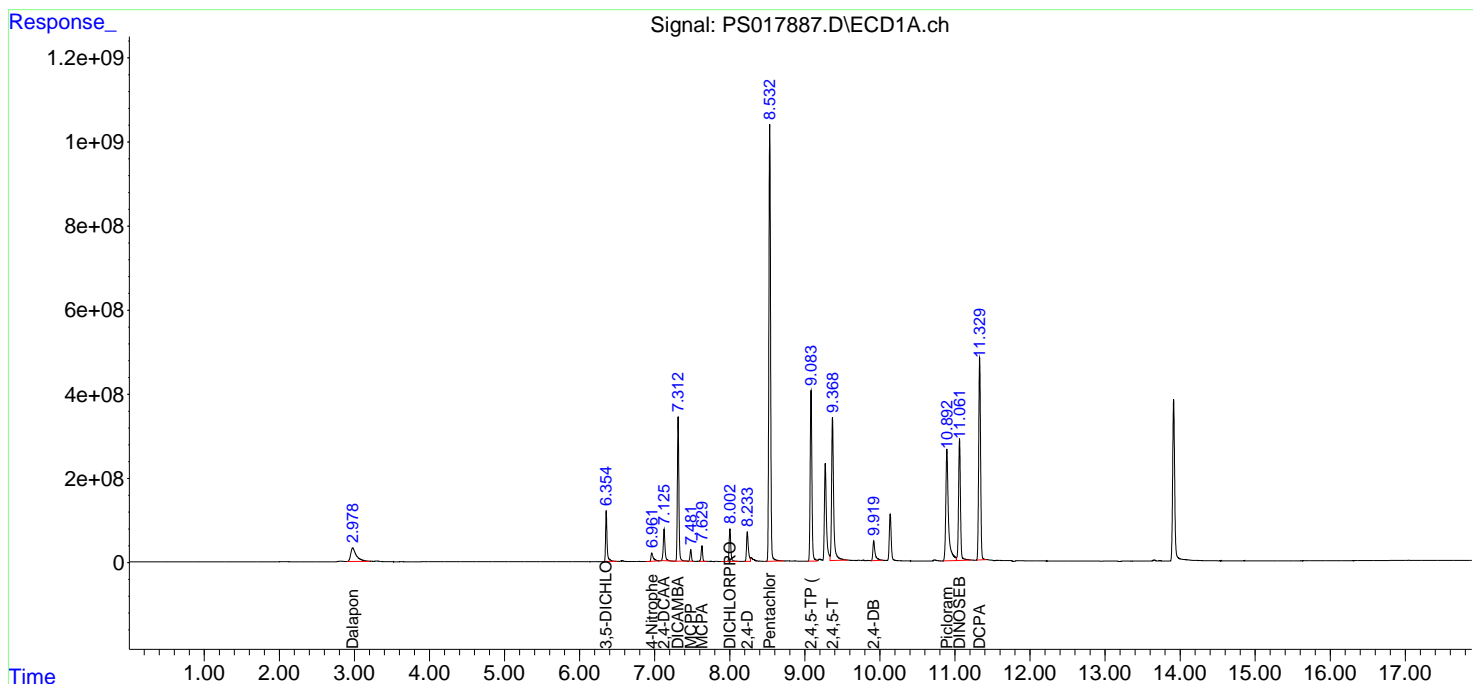
(f)=RT Delta > 1/2 Window (#)=Amounts differ by > 25% (m)=manual int.

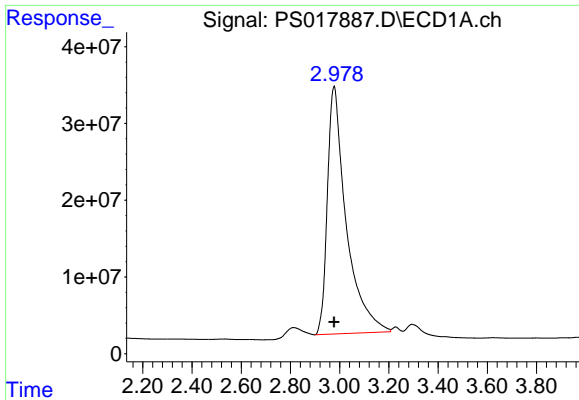
Data Path : Z:\pestpcbsrv\HPCHEM1\ECD_S\Data\PS123021\
 Data File : PS017887.D
 Signal(s) : Signal #1: ECD1A.ch Signal #2: ECD2B.ch
 Acq On : 31 Dec 2021 01:23
 Operator : AJ\MA
 Sample : HSTDCCC750
 Misc :
 ALS Vial : 3 Sample Multiplier: 1

Instrument :
 ECD_S
 ClientSampleId :

Integration File signal 1: autoint1.e
 Integration File signal 2: autoint2.e
 Quant Time: Dec 31 02:56:47 2021
 Quant Method : Z:\pestpcbsrv\HPCHEM1\ECD_S\Method\PS121421.M
 Quant Title : 8080.M
 QLast Update : Tue Dec 14 13:29:21 2021
 Response via : Initial Calibration
 Integrator: ChemStation

Volume Inj. : 2 µl
 Signal #1 Phase : Rtx-CLPesticides Signal #2 Phase: Rtx-CLPesticides2
 Signal #1 Info : 30M x 0.32mm x0.5 Signal #2 Info : 30M x 0.32mm x 0.25µm

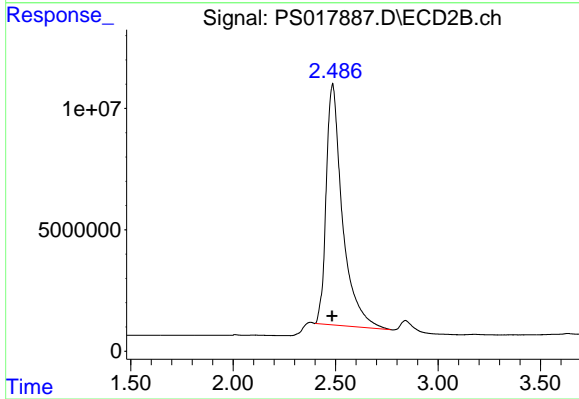




#1 Dalapon

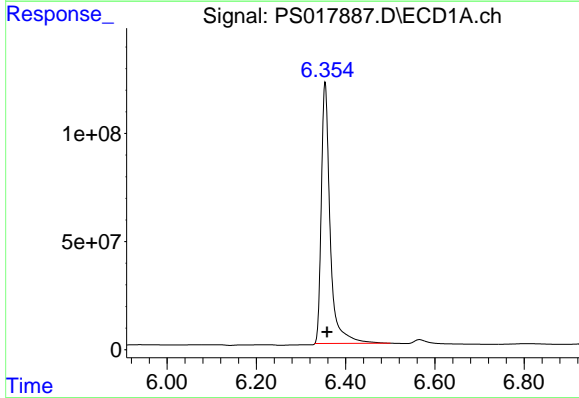
R.T.: 2.978 min
 Delta R.T.: 0.000 min
 Response: 1719672590
 Conc: 671.06 ng/ml

Instrument :
 ECD_S
 ClientSampleId :



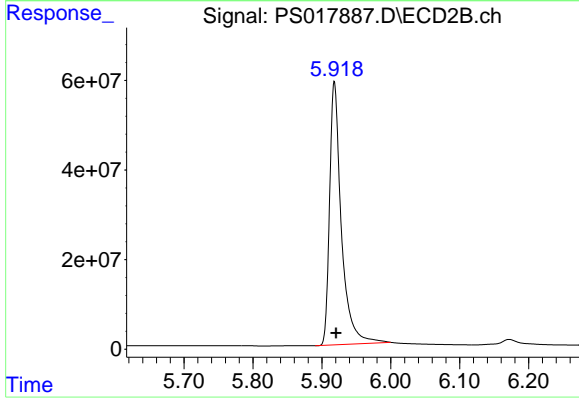
#1 Dalapon

R.T.: 2.486 min
 Delta R.T.: 0.003 min
 Response: 546034729
 Conc: 705.38 ng/ml



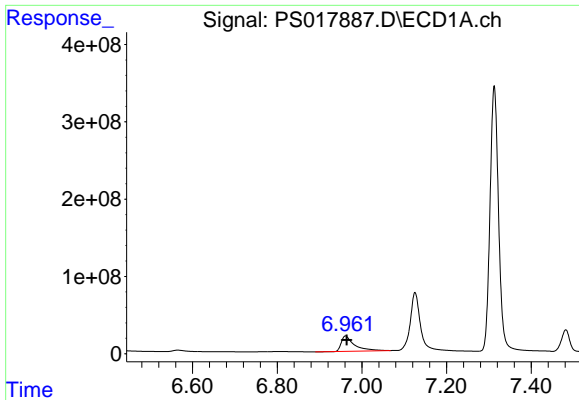
#2 3,5-DICHLOROBENZOIC ACID

R.T.: 6.354 min
 Delta R.T.: -0.004 min
 Response: 1660397070
 Conc: 743.19 ng/ml



#2 3,5-DICHLOROBENZOIC ACID

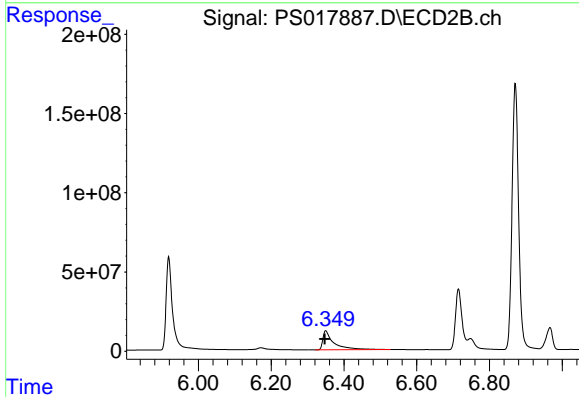
R.T.: 5.918 min
 Delta R.T.: -0.002 min
 Response: 698421686
 Conc: 770.33 ng/ml



#3 4-Nitrophenol

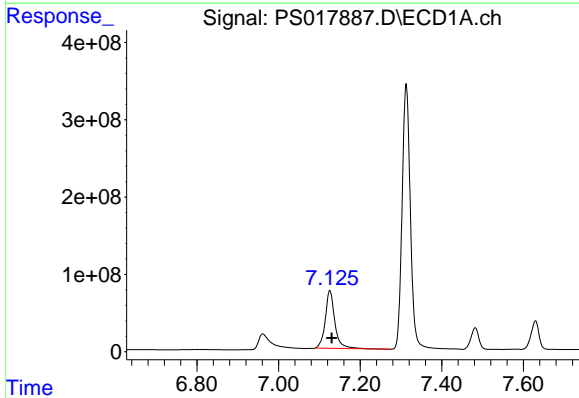
R.T.: 6.961 min
 Delta R.T.: -0.003 min
 Response: 423351812
 Conc: 626.05 ng/ml

Instrument :
 ECD_S
 ClientSampleId :



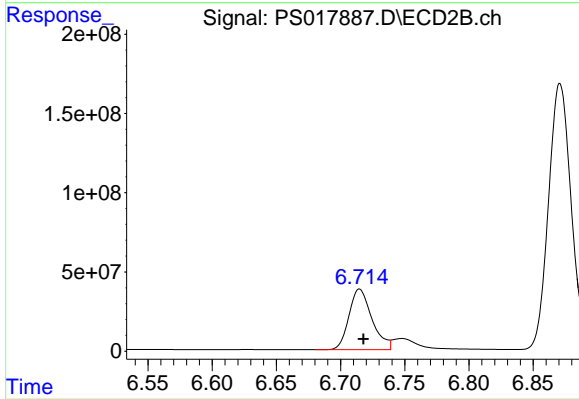
#3 4-Nitrophenol

R.T.: 6.350 min
 Delta R.T.: 0.002 min
 Response: 251861176
 Conc: 723.23 ng/ml



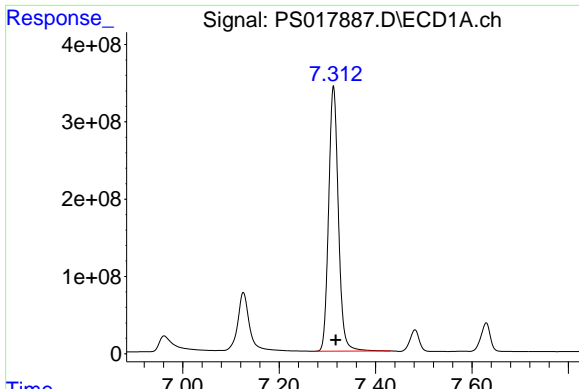
#4 2,4-DCAA

R.T.: 7.126 min
 Delta R.T.: -0.004 min
 Response: 1212721096
 Conc: 775.92 ng/ml



#4 2,4-DCAA

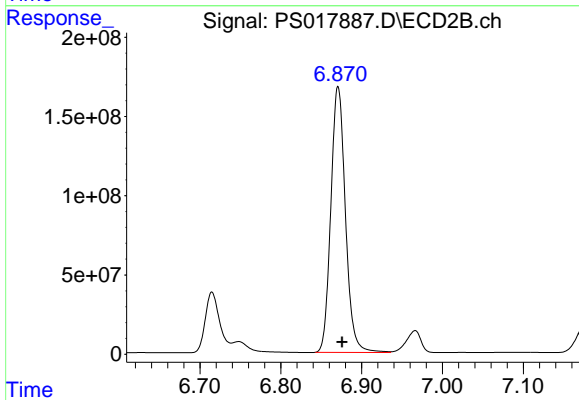
R.T.: 6.715 min
 Delta R.T.: -0.003 min
 Response: 475523063
 Conc: 797.72 ng/ml



#5 DICAMBA

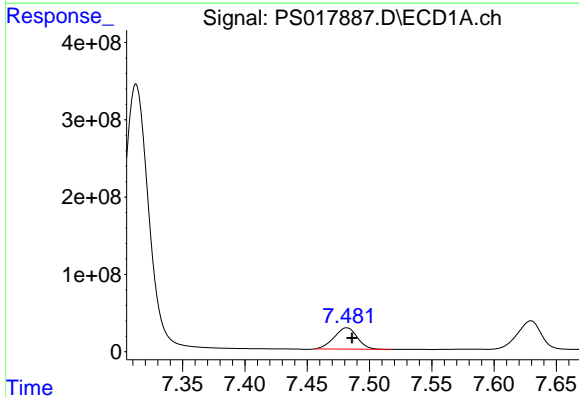
R.T.: 7.313 min
 Delta R.T.: -0.005 min
 Response: 4818671861
 Conc: 762.03 ng/ml

Instrument :
 ECD_S
 ClientSampleId :



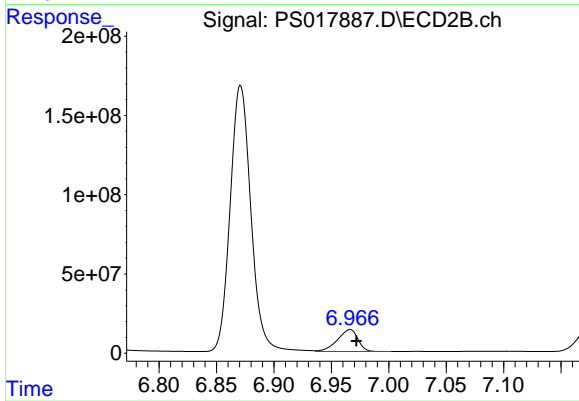
#5 DICAMBA

R.T.: 6.871 min
 Delta R.T.: -0.005 min
 Response: 2104433557
 Conc: 789.97 ng/ml



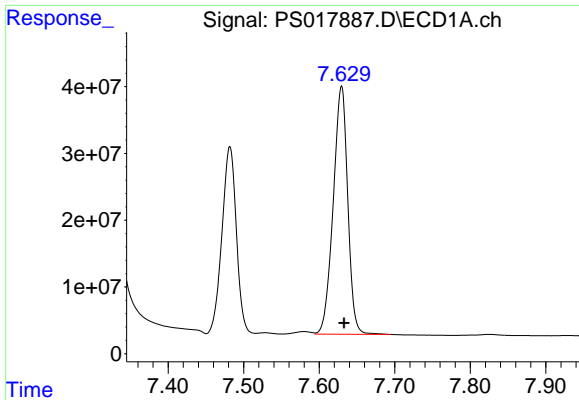
#6 MCP

R.T.: 7.482 min
 Delta R.T.: -0.004 min
 Response: 355507786
 Conc: 75.42 ug/ml



#6 MCP

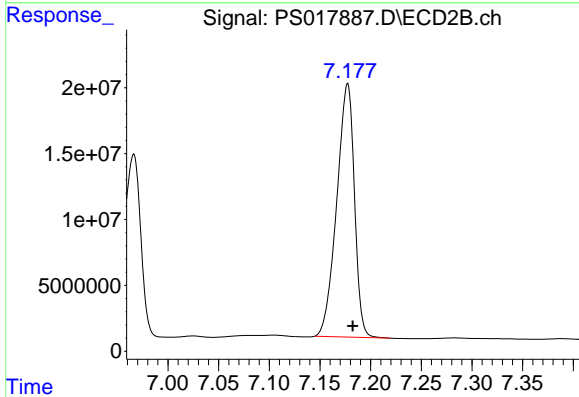
R.T.: 6.966 min
 Delta R.T.: -0.006 min
 Response: 171843759
 Conc: 78.95 ug/ml



#7 MCPA

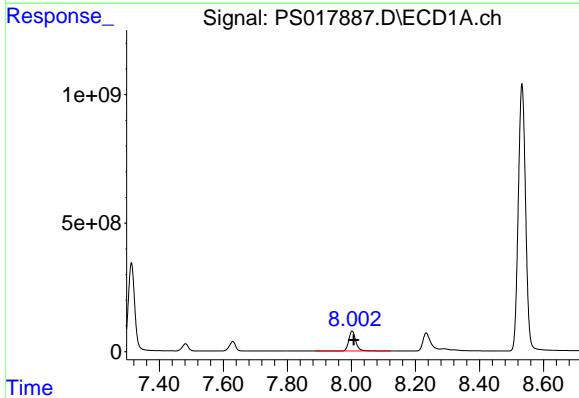
R.T.: 7.629 min
 Delta R.T.: -0.004 min
 Response: 497014157
 Conc: 75.15 ug/ml

Instrument :
 ECD_S
 ClientSampleId :



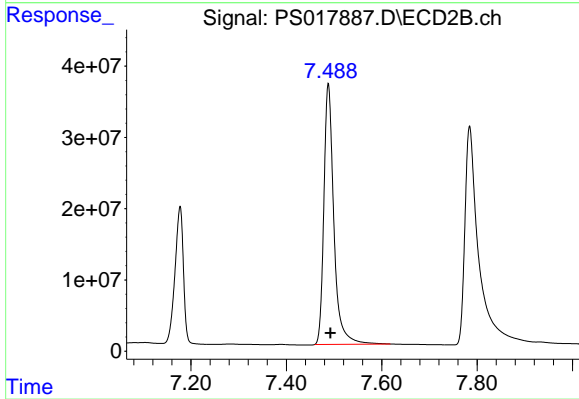
#7 MCPA

R.T.: 7.177 min
 Delta R.T.: -0.005 min
 Response: 233843169
 Conc: 76.47 ug/ml



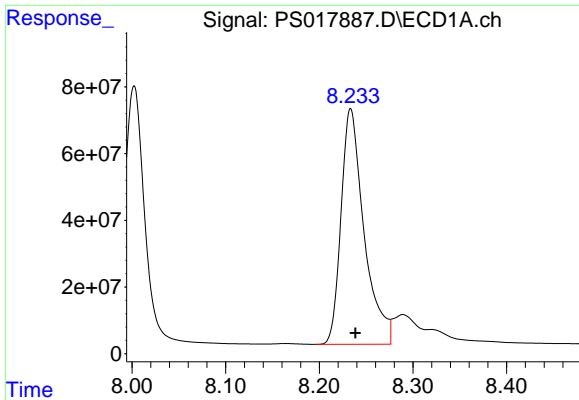
#8 DICHLORPROP

R.T.: 8.002 min
 Delta R.T.: -0.005 min
 Response: 1174619356
 Conc: 751.75 ng/ml



#8 DICHLORPROP

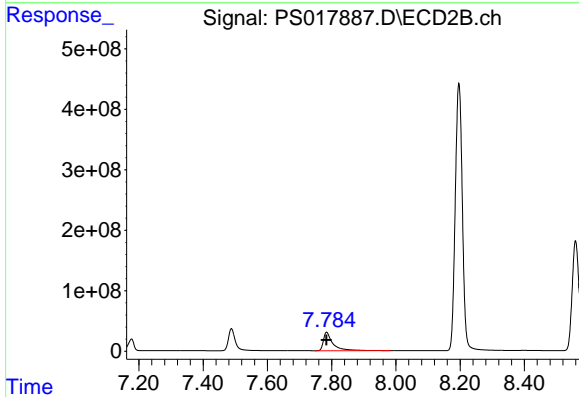
R.T.: 7.488 min
 Delta R.T.: -0.004 min
 Response: 530262746
 Conc: 778.06 ng/ml



#9 2,4-D

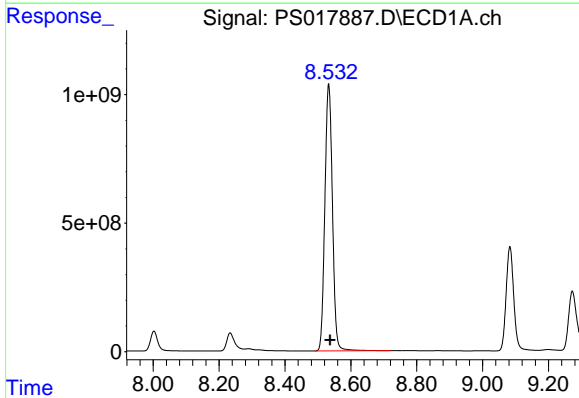
R.T.: 8.234 min
 Delta R.T.: -0.005 min
 Response: 1204054418
 Conc: 681.07 ng/ml

Instrument :
 ECD_S
 ClientSampleId :



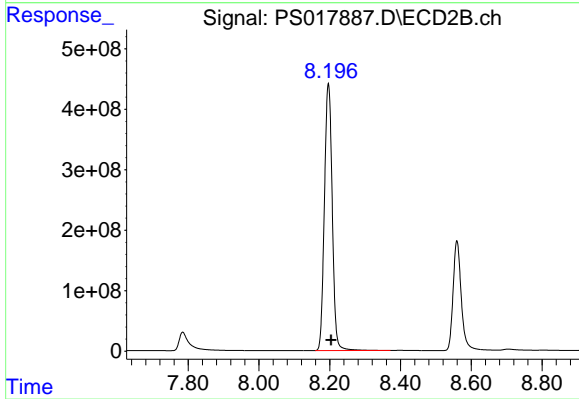
#9 2,4-D

R.T.: 7.784 min
 Delta R.T.: 0.000 min
 Response: 624060693
 Conc: 767.56 ng/ml



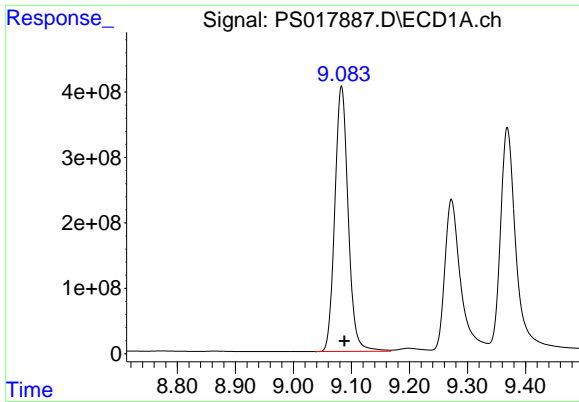
#10 Pentachlorophenol

R.T.: 8.533 min
 Delta R.T.: -0.005 min
 Response: 16539082105
 Conc: 766.50 ng/ml



#10 Pentachlorophenol

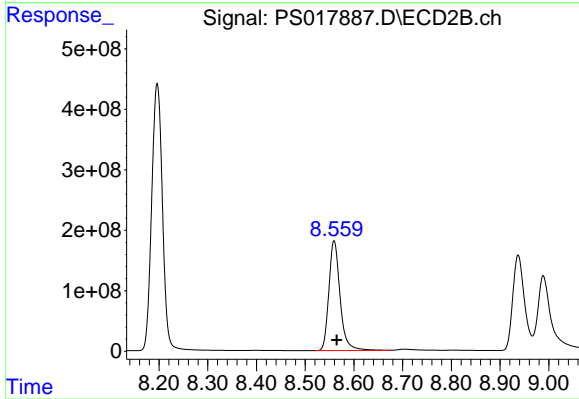
R.T.: 8.196 min
 Delta R.T.: -0.007 min
 Response: 6778208900
 Conc: 791.13 ng/ml



#11 2,4,5-TP (SILVEX)

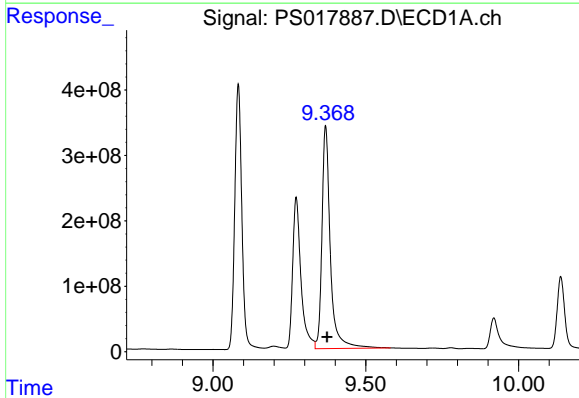
R.T.: 9.083 min
 Delta R.T.: -0.005 min
 Response: 6504796633
 Conc: 764.65 ng/ml

Instrument :
 ECD_S
 ClientSampleId :



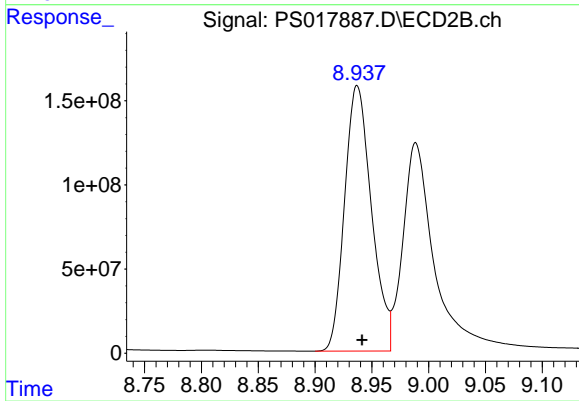
#11 2,4,5-TP (SILVEX)

R.T.: 8.559 min
 Delta R.T.: -0.006 min
 Response: 2914811326
 Conc: 801.81 ng/ml



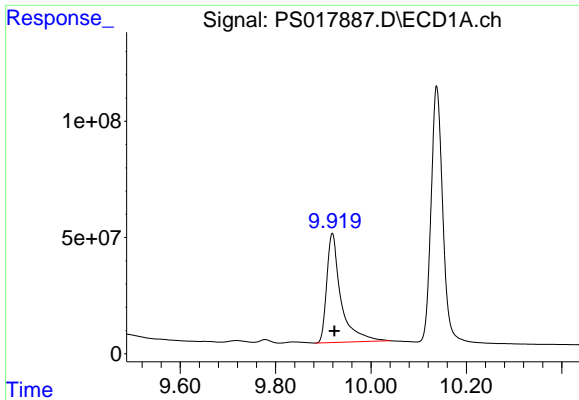
#12 2,4,5-T

R.T.: 9.369 min
 Delta R.T.: -0.005 min
 Response: 6498456834
 Conc: 747.01 ng/ml



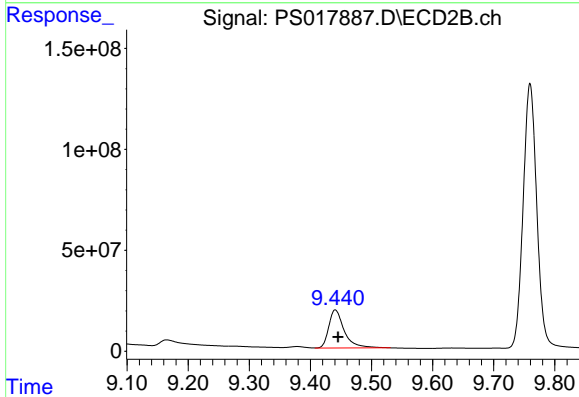
#12 2,4,5-T

R.T.: 8.937 min
 Delta R.T.: -0.004 min
 Response: 2599819320
 Conc: 760.26 ng/ml

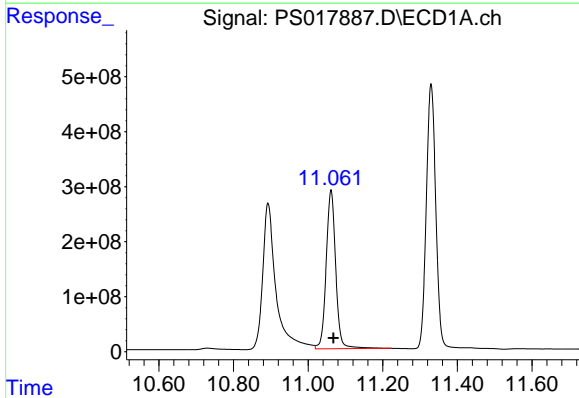


#13 2,4-DB
 R.T.: 9.919 min
 Delta R.T.: -0.004 min
 Response: 967817788
 Conc: 655.39 ng/ml

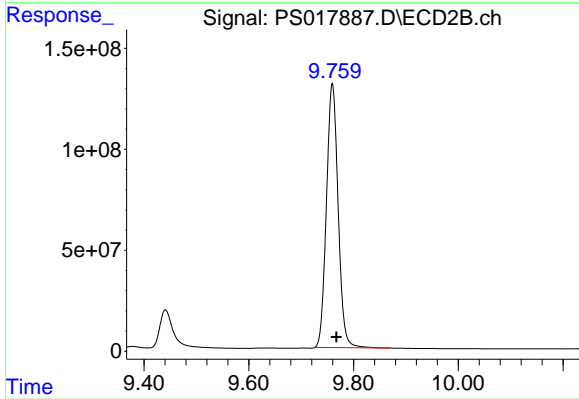
Instrument :
 ECD_S
 ClientSampleId :



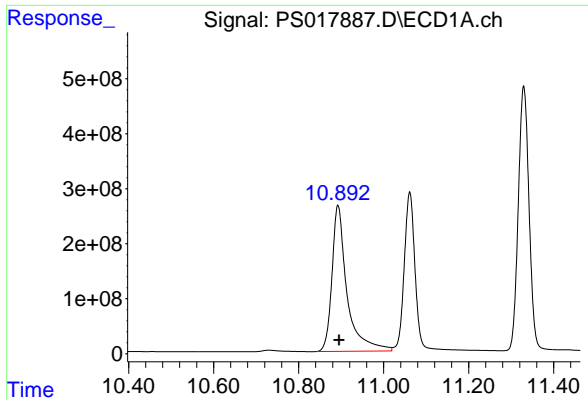
#13 2,4-DB
 R.T.: 9.441 min
 Delta R.T.: -0.005 min
 Response: 331506536
 Conc: 731.70 ng/ml



#14 DINOSEB
 R.T.: 11.061 min
 Delta R.T.: -0.006 min
 Response: 5135321716
 Conc: 751.01 ng/ml

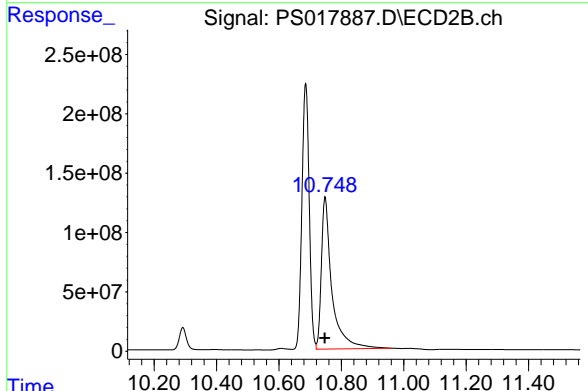


#14 DINOSEB
 R.T.: 9.760 min
 Delta R.T.: -0.008 min
 Response: 2022674183
 Conc: 782.91 ng/ml

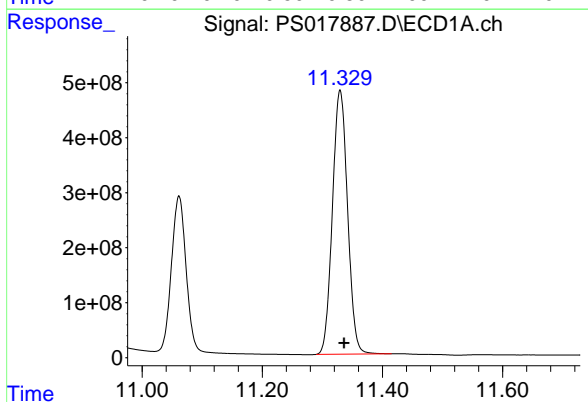


#15 Picloram
 R.T.: 10.893 min
 Delta R.T.: -0.002 min
 Response: 6547150243
 Conc: 603.36 ng/ml

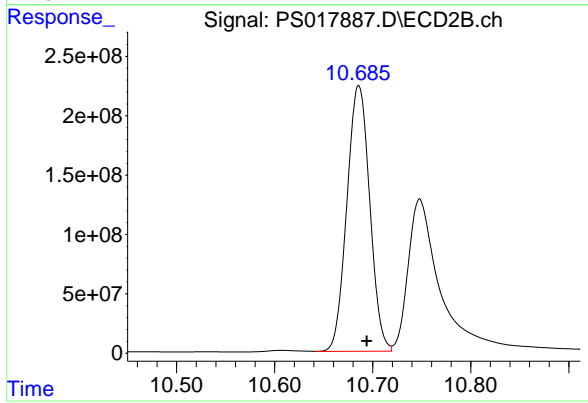
Instrument :
 ECD_S
 ClientSampleId :



#15 Picloram
 R.T.: 10.748 min
 Delta R.T.: 0.001 min
 Response: 3006225984
 Conc: 612.08 ng/ml



#16 DCPA
 R.T.: 11.330 min
 Delta R.T.: -0.006 min
 Response: 8400953003
 Conc: 773.53 ng/ml



#16 DCPA
 R.T.: 10.686 min
 Delta R.T.: -0.008 min
 Response: 3631825048
 Conc: 810.87 ng/ml