

Data Path : Z:\pestpcbsrv\HPCHEM1\ECD\_S\Data\PS123120\  
 Data File : PS013642.D  
 Signal(s) : Signal #1: ECD1A.ch Signal #2: ECD2B.ch  
 Acq On : 31 Dec 2020 16:08  
 Operator : DD\AJ  
 Sample : L5242-11  
 Misc :  
 ALS Vial : 16 Sample Multiplier: 1

Instrument :  
 ECD\_S  
 ClientSampleId :

Integration File signal 1: autoint1.e  
 Integration File signal 2: autoint2.e  
 Quant Time: Dec 31 18:04:27 2020  
 Quant Method : Z:\pestpcbsrv\HPCHEM1\ECD\_S\Method\PS120220.M  
 Quant Title : 8080.M  
 QLast Update : Thu Dec 03 02:59:27 2020  
 Response via : Initial Calibration  
 Integrator: ChemStation

Volume Inj. : 2 µl  
 Signal #1 Phase : Rtx-CLPesticides Signal #2 Phase: Rtx-CLPesticides2  
 Signal #1 Info : 30M x 0.32mm x0.5 Signal #2 Info : 30M x 0.32mm x 0.25µm

Compound	RT#1	RT#2	Resp#1	Resp#2	ng/ml	ng/ml
-----						
System Monitoring Compounds						
4) S 2,4-DCAA	7.208	6.911	131.0E6	58557108	140.703	148.863
Target Compounds						
1) T Dalapon	2.990f	2.588	81358261	88533700	75.738	168.465 #
2) T 3,5-DICHL...	0.000	6.094	0	25912625	N.D.	41.703
3) T 4-Nitroph...	0.000	6.540	0	2873847	N.D.	12.057
5) T DICAMBA	0.000	7.044	0	6581898	N.D.	3.916
6) T MCPP	7.562	7.118f	8322990	2585752	3.065	1.951 #
7) T MCPA	7.697	7.371	10226922	21683569	2.617	10.427 #
8) T DICHLORPROP	0.000	7.733	0	6825355	N.D.	15.272
10) T Pentachlo...	8.693f	8.455	170.6E6	91668818	12.727	16.256 #
11) T 2,4,5-TP ...	9.162	8.755	34269760	20526541	6.429	8.743 #
12) T 2,4,5-T	9.445	9.158	5183726	5722630	<MDL	2.565 #
13) T 2,4-DB	10.068f	9.704	95977116	43930694	104.479	150.197 #
14) T DINOSEB	11.173	10.017	50389345	26404621	11.890	15.975 #
15) T Picloram	11.048	11.008	36826746	149.5E6	5.347	42.949 #
16) T DCPA	11.469	10.937	44052471	126.3E6	6.496	41.539 #
-----						

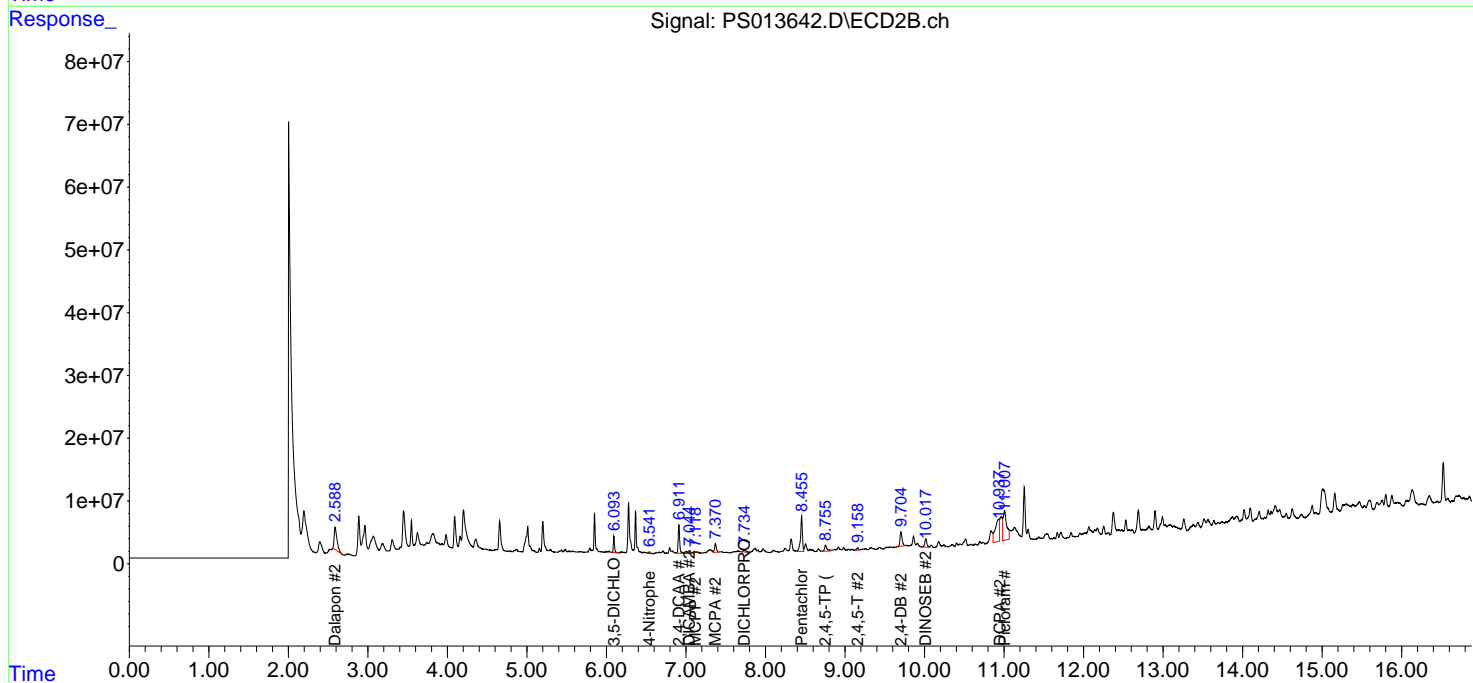
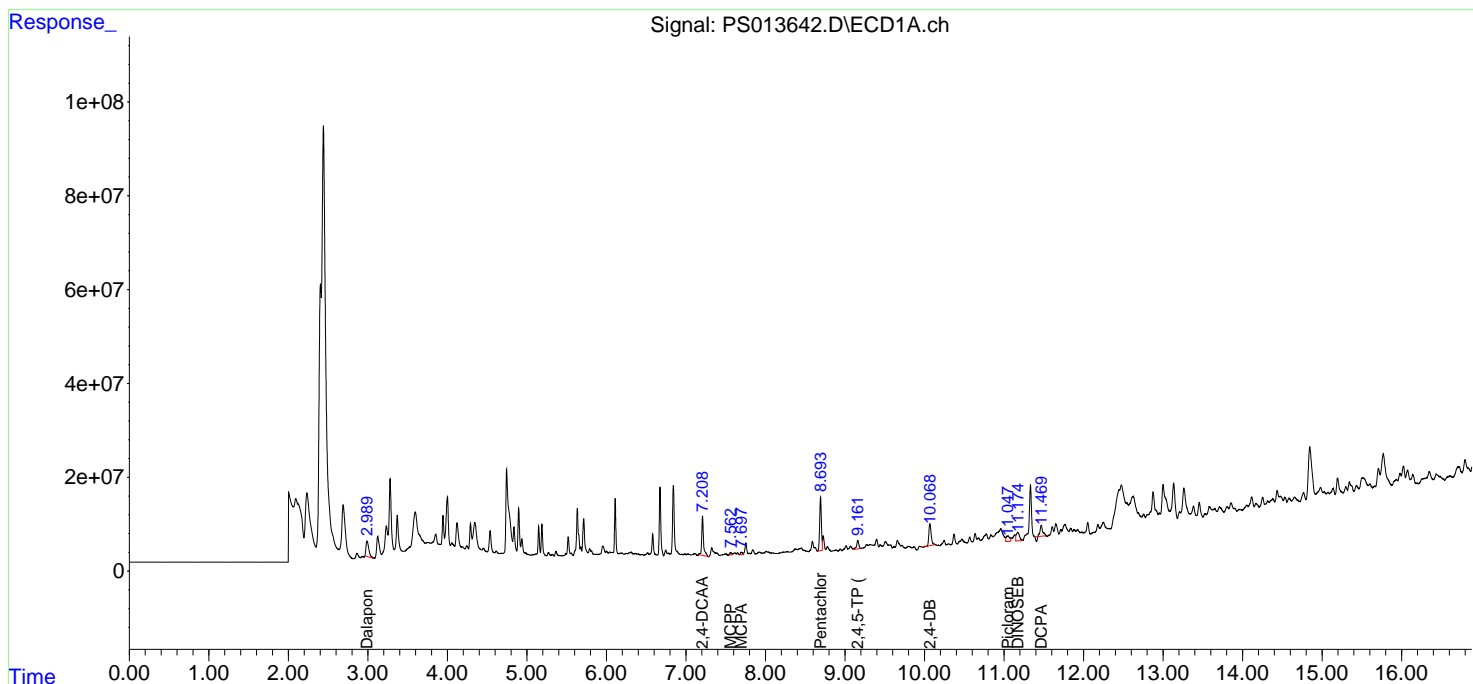
(f)=RT Delta > 1/2 Window (#)=Amounts differ by > 25% (m)=manual int.

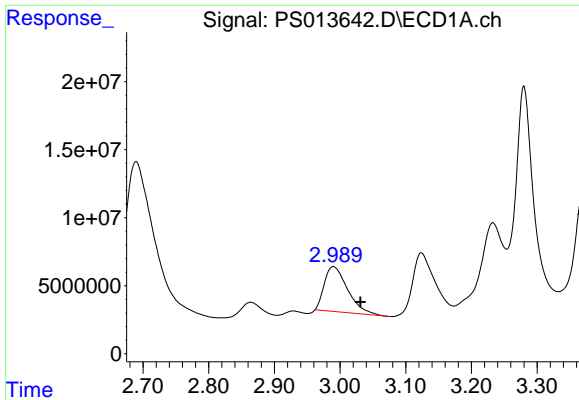
Data Path : Z:\pestpcbsrv\HPCHEM1\ECD\_S\Data\PS123120\  
 Data File : PS013642.D  
 Signal(s) : Signal #1: ECD1A.ch Signal #2: ECD2B.ch  
 Acq On : 31 Dec 2020 16:08  
 Operator : DD\AJ  
 Sample : L5242-11  
 Misc :  
 ALS Vial : 16 Sample Multiplier: 1

Instrument :  
 ECD\_S  
 ClientSampled :

Integration File signal 1: autoint1.e  
 Integration File signal 2: autoint2.e  
 Quant Time: Dec 31 18:04:27 2020  
 Quant Method : Z:\pestpcbsrv\HPCHEM1\ECD\_S\Method\PS120220.M  
 Quant Title : 8080.M  
 QLast Update : Thu Dec 03 02:59:27 2020  
 Response via : Initial Calibration  
 Integrator: ChemStation

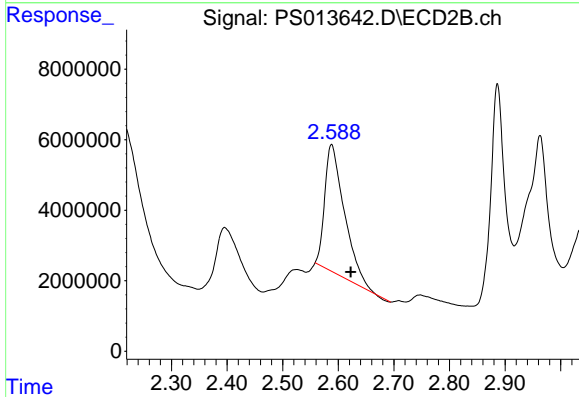
Volume Inj. : 2 µl  
 Signal #1 Phase : Rtx-CLPesticides Signal #2 Phase: Rtx-CLPesticides2  
 Signal #1 Info : 30M x 0.32mm x0.5 Signal #2 Info : 30M x 0.32mm x 0.25µm



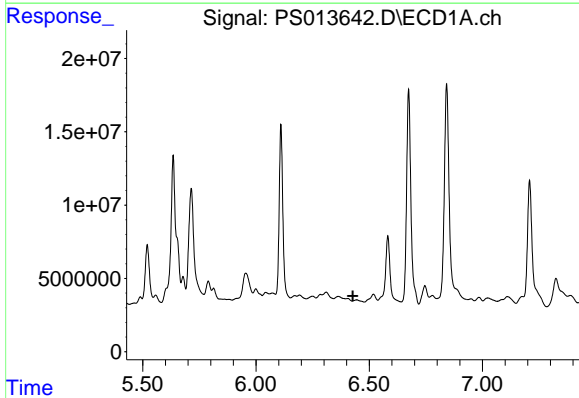


#1 Dalapon  
 R.T.: 2.990 min  
 Delta R.T.: -0.041 min  
 Response: 81358261  
 Conc: 75.74 ng/ml

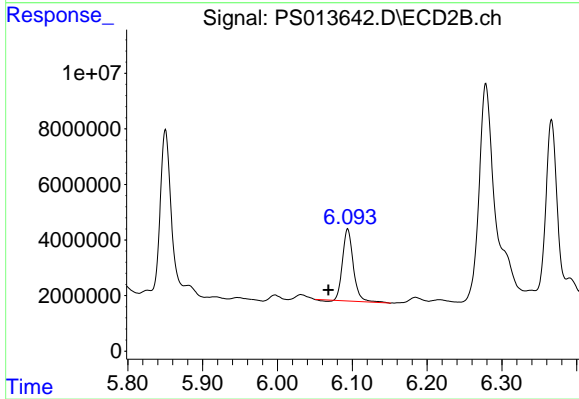
Instrument :  
 ECD\_S  
 ClientSampled :



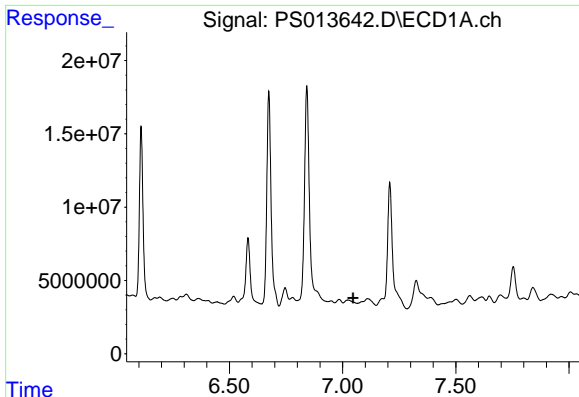
#1 Dalapon  
 R.T.: 2.588 min  
 Delta R.T.: -0.034 min  
 Response: 88533700  
 Conc: 168.47 ng/ml



#2 3,5-DICHLOROBENZOIC ACID  
 R.T.: 0.000 min  
 Exp R.T. : 6.428 min  
 Response: 0  
 Conc: N.D.



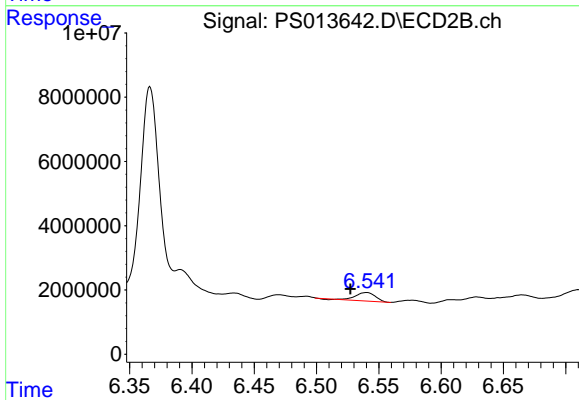
#2 3,5-DICHLOROBENZOIC ACID  
 R.T.: 6.094 min  
 Delta R.T.: 0.026 min  
 Response: 25912625  
 Conc: 41.70 ng/ml



#3 4-Nitrophenol

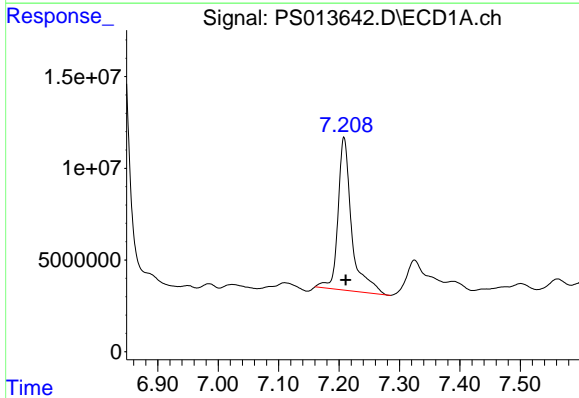
R.T.: 0.000 min  
 Exp R.T.: 7.046 min  
 Response: 0  
 Conc: N.D.

Instrument :  
 ECD\_S  
 ClientSampled :



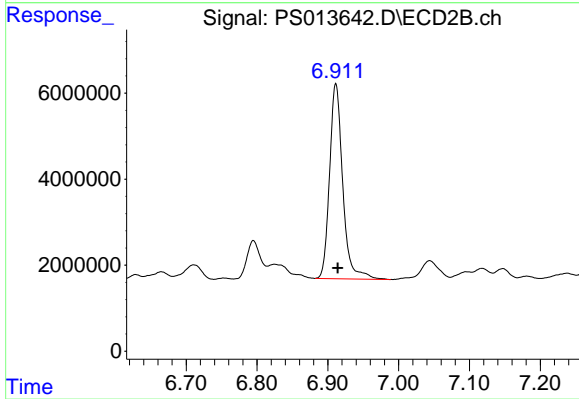
#3 4-Nitrophenol

R.T.: 6.540 min  
 Delta R.T.: 0.013 min  
 Response: 2873847  
 Conc: 12.06 ng/ml



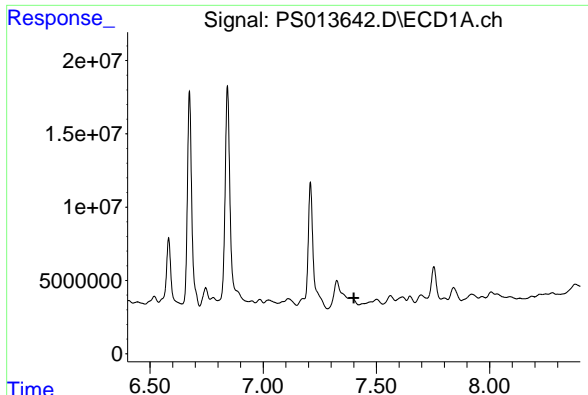
#4 2,4-DCAA

R.T.: 7.208 min  
 Delta R.T.: -0.003 min  
 Response: 131002613  
 Conc: 140.70 ng/ml



#4 2,4-DCAA

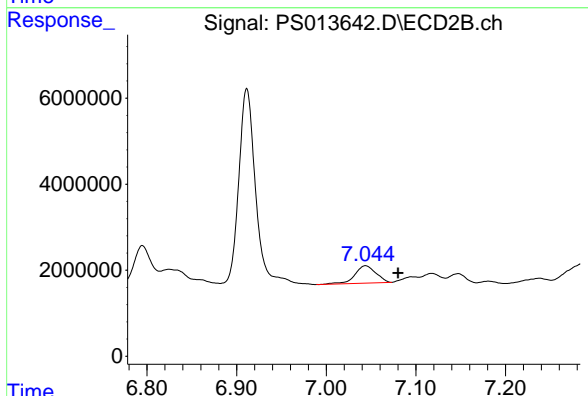
R.T.: 6.911 min  
 Delta R.T.: -0.003 min  
 Response: 58557108  
 Conc: 148.86 ng/ml



#5 DICAMBA

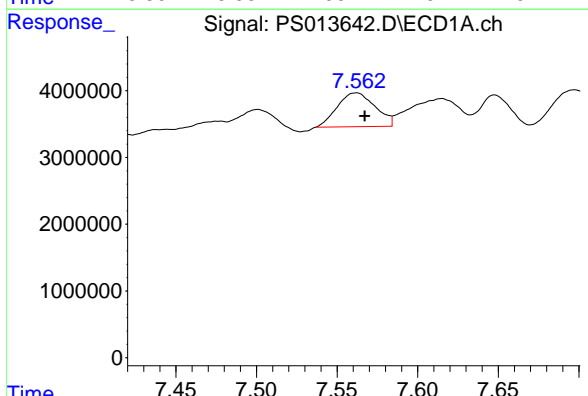
R.T.: 0.000 min  
 Exp R.T.: 7.401 min  
 Response: 0  
 Conc: N.D.

Instrument :  
 ECD\_S  
 ClientSampled :



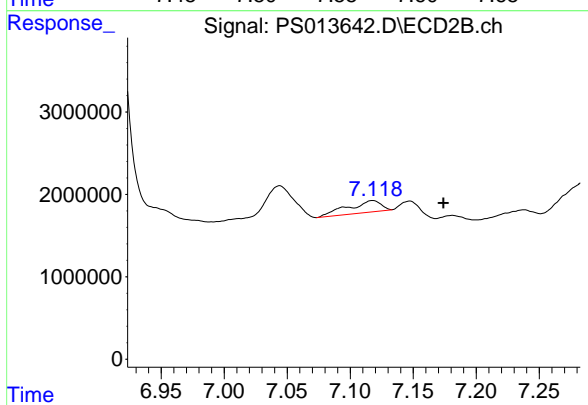
#5 DICAMBA

R.T.: 7.044 min  
 Delta R.T.: -0.036 min  
 Response: 6581898  
 Conc: 3.92 ng/ml



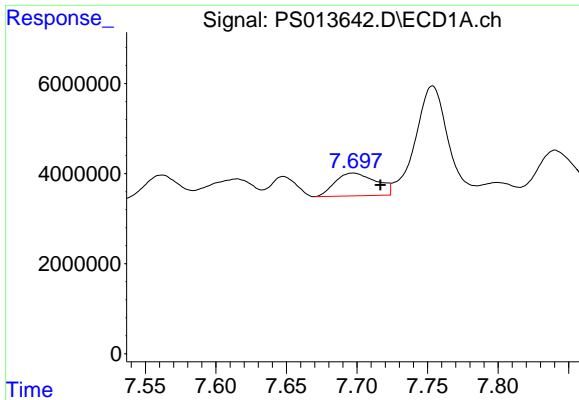
#6 MCP

R.T.: 7.562 min  
 Delta R.T.: -0.006 min  
 Response: 8322990  
 Conc: 3.07 ug/ml



#6 MCP

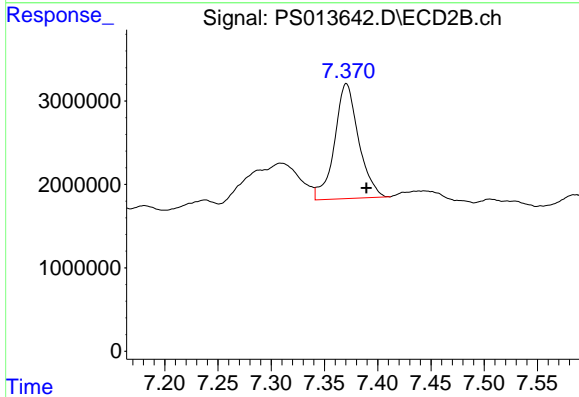
R.T.: 7.118 min  
 Delta R.T.: -0.056 min  
 Response: 2585752  
 Conc: 1.95 ug/ml



#7 MCPA

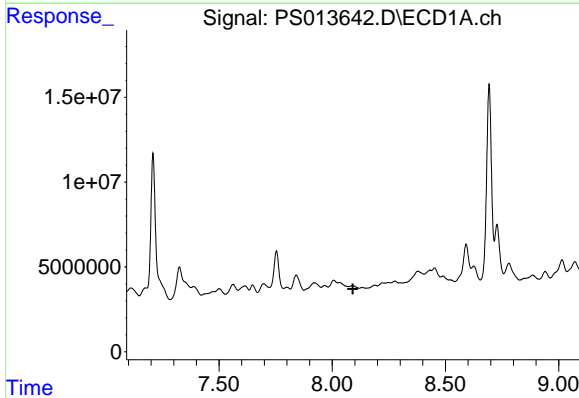
R.T.: 7.697 min  
 Delta R.T.: -0.019 min  
 Response: 10226922  
 Conc: 2.62 ug/ml

Instrument :  
 ECD\_S  
 ClientSampleId :



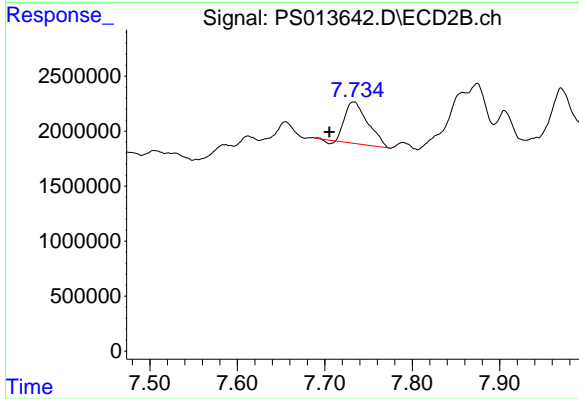
#7 MCPA

R.T.: 7.371 min  
 Delta R.T.: -0.019 min  
 Response: 21683569  
 Conc: 10.43 ug/ml



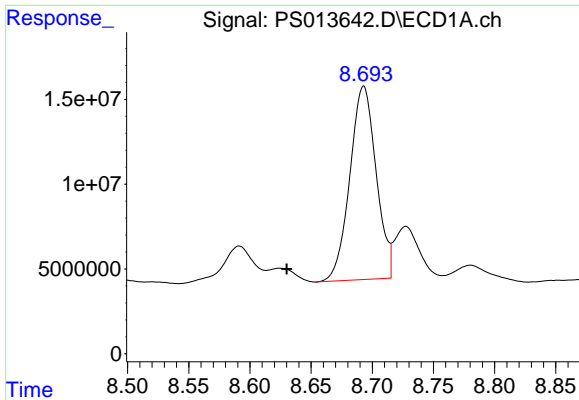
#8 DICHLORPROP

R.T.: 0.000 min  
 Exp R.T. : 8.092 min  
 Response: 0  
 Conc: N.D.



#8 DICHLORPROP

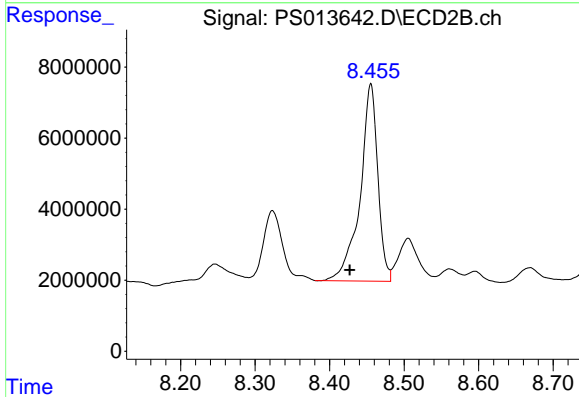
R.T.: 7.733 min  
 Delta R.T.: 0.028 min  
 Response: 6825355  
 Conc: 15.27 ng/ml



#10 Pentachlorophenol

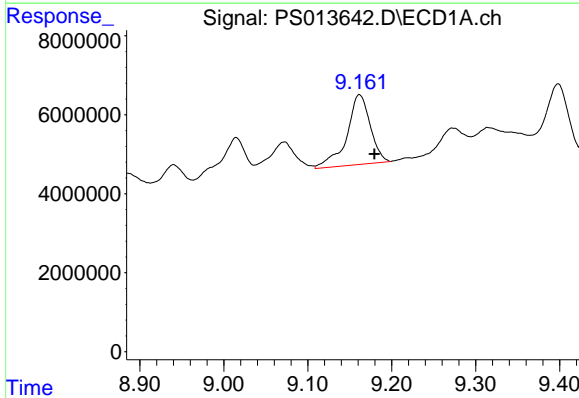
R.T.: 8.693 min  
 Delta R.T.: 0.063 min  
 Response: 170576375  
 Conc: 12.73 ng/ml

Instrument :  
 ECD\_S  
 ClientSampled :



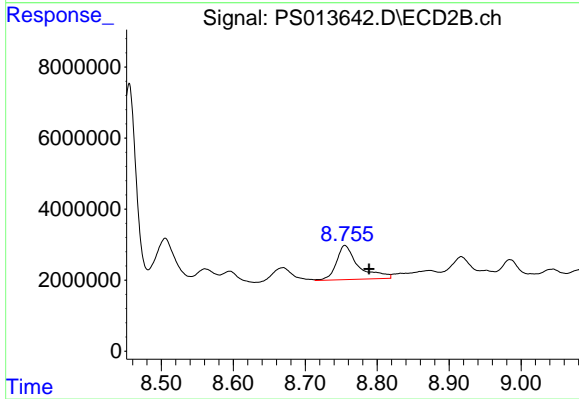
#10 Pentachlorophenol

R.T.: 8.455 min  
 Delta R.T.: 0.028 min  
 Response: 91668818  
 Conc: 16.26 ng/ml



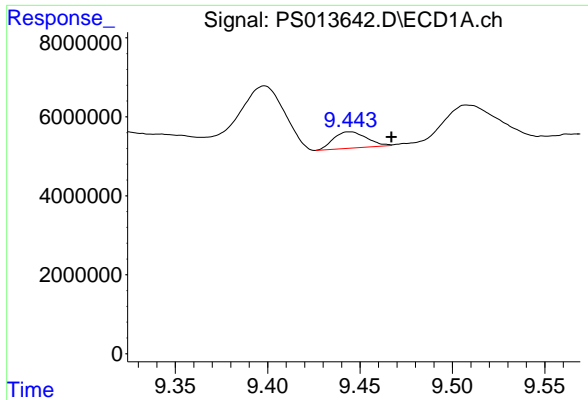
#11 2,4,5-TP (SILVEX)

R.T.: 9.162 min  
 Delta R.T.: -0.018 min  
 Response: 34269760  
 Conc: 6.43 ng/ml



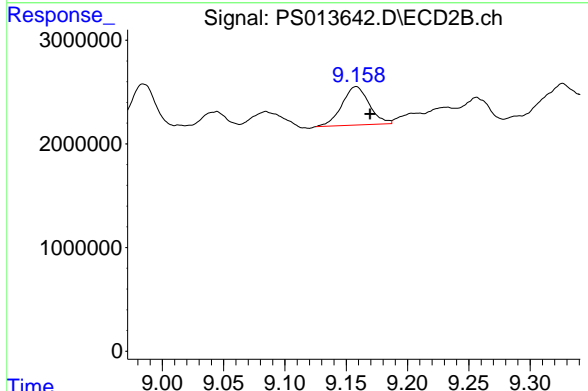
#11 2,4,5-TP (SILVEX)

R.T.: 8.755 min  
 Delta R.T.: -0.034 min  
 Response: 20526541  
 Conc: 8.74 ng/ml

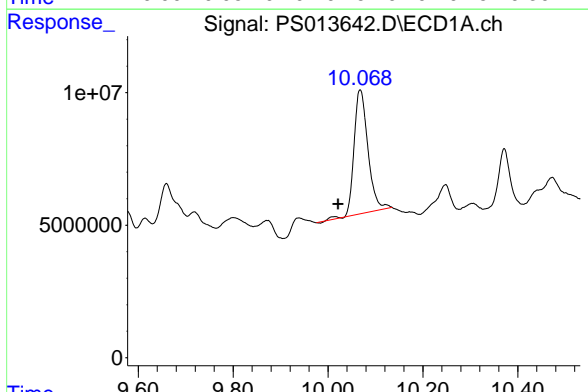


#12 2,4,5-T  
 R.T.: 9.445 min  
 Delta R.T.: -0.022 min  
 Response: 5183726  
 Conc: N.D.

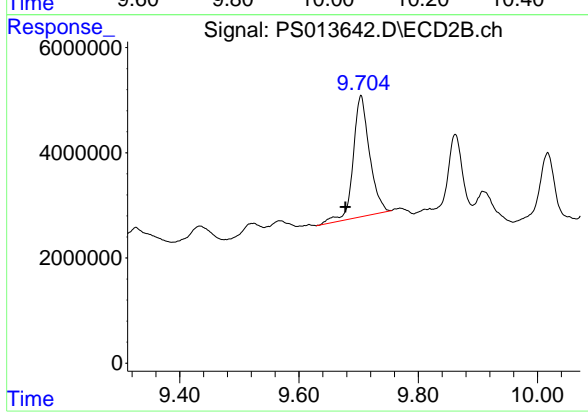
Instrument :  
 ECD\_S  
 ClientSampled :



#12 2,4,5-T  
 R.T.: 9.158 min  
 Delta R.T.: -0.011 min  
 Response: 5722630  
 Conc: 2.56 ng/ml

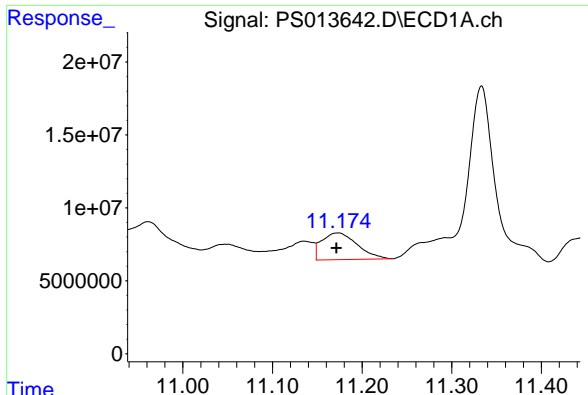


#13 2,4-DB  
 R.T.: 10.068 min  
 Delta R.T.: 0.047 min  
 Response: 95977116  
 Conc: 104.48 ng/ml



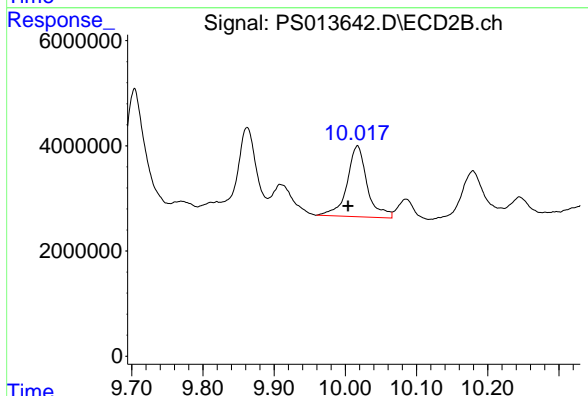
#13 2,4-DB  
 R.T.: 9.704 min  
 Delta R.T.: 0.026 min  
 Response: 43930694  
 Conc: 150.20 ng/ml



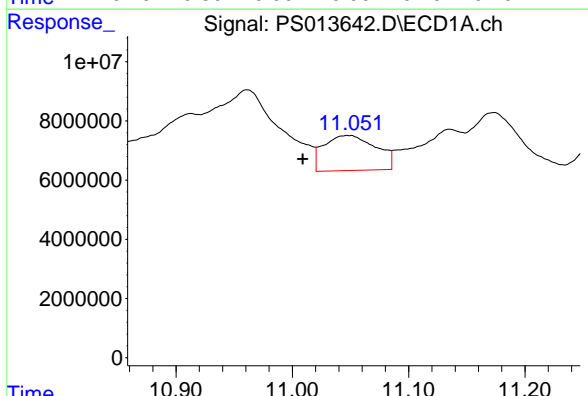


#14 DINOSEB  
 R.T.: 11.173 min  
 Delta R.T.: 0.001 min  
 Response: 50389345  
 Conc: 11.89 ng/ml

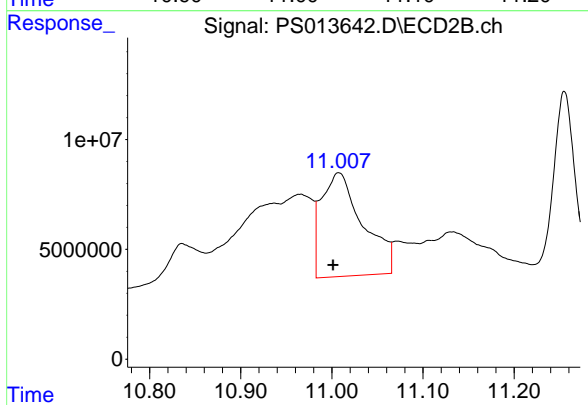
Instrument :  
 ECD\_S  
 ClientSampled :



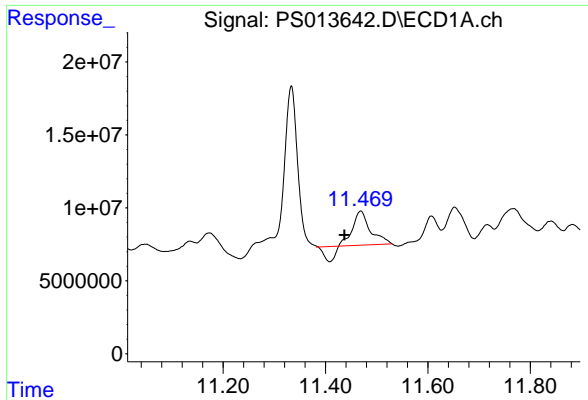
#14 DINOSEB  
 R.T.: 10.017 min  
 Delta R.T.: 0.013 min  
 Response: 26404621  
 Conc: 15.97 ng/ml



#15 Picloram  
 R.T.: 11.048 min  
 Delta R.T.: 0.039 min  
 Response: 36826746  
 Conc: 5.35 ng/ml

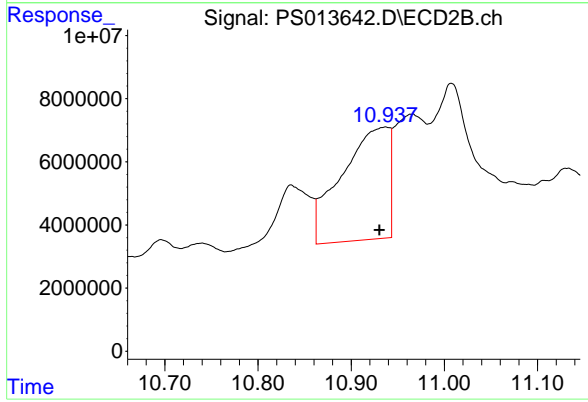


#15 Picloram  
 R.T.: 11.008 min  
 Delta R.T.: 0.006 min  
 Response: 149539979  
 Conc: 42.95 ng/ml



#16 DCPA  
 R.T.: 11.469 min  
 Delta R.T.: 0.032 min  
 Response: 44052471  
 Conc: 6.50 ng/ml

Instrument :  
 ECD\_S  
 ClientSampleId :



#16 DCPA  
 R.T.: 10.937 min  
 Delta R.T.: 0.007 min  
 Response: 126330969  
 Conc: 41.54 ng/ml