

Data Path : Z:\pestpcbsrv\HPCHEM1\ECD_S\Data\PS020322\
 Data File : PS018228.D
 Signal(s) : Signal #1: ECD1A.ch Signal #2: ECD2B.ch
 Acq On : 03 Feb 2022 17:31
 Operator : AJ\MA
 Sample : N1357-01
 Misc :
 ALS Vial : 16 Sample Multiplier: 1

Instrument :
 ECD_S
 ClientSampleId :

Integration File signal 1: autoint1.e
 Integration File signal 2: autoint2.e
 Quant Time: Feb 03 22:26:16 2022
 Quant Method : Z:\pestpcbsrv\HPCHEM1\ECD_S\Method\PS010522.M
 Quant Title : 8080.M
 QLast Update : Thu Jan 06 10:21:08 2022
 Response via : Initial Calibration
 Integrator: ChemStation

Volume Inj. : 2 µl
 Signal #1 Phase : Rtx-CLPesticides Signal #2 Phase: Rtx-CLPesticides2
 Signal #1 Info : 30M x 0.32mm x0.5 Signal #2 Info : 30M x 0.32mm x 0.25µm

	Compound	RT#1	RT#2	Resp#1	Resp#2	ng/ml	ng/ml

System Monitoring Compounds							
4) S	2,4-DCAA	7.042	6.647	954.7E6	424.4E6	660.463	731.465
Target Compounds							
2) T	3,5-DICHL...	0.000	5.888	0	15857167	N.D.	17.925
3) T	4-Nitroph...	6.884	0.000	10962627	0	13.573	N.D. #
5) T	DICAMBA	7.228	6.802	274.5E6	122.6E6	43.963	46.614
6) T	MCPD	7.390	6.948f	12863035	23455924	2.755	10.905 #
7) T	MCPA	7.542	7.091	23995913	11372650	3.597	3.811
8) T	DICHLORPROP	7.908	7.429	6654949	61581071	4.231	92.267 #
9) T	2,4-D	8.148	0.000	12297099	0	6.753	N.D. #
10) T	Pentachlo...	8.439	8.115	21998674	10370291	1.041	1.231
11) T	2,4,5-TP ...	8.984	8.513	7314229	19954633	<MDL	5.598 #
12) T	2,4,5-T	9.338f	8.856	80308977	12404754	9.060	3.792 #
13) T	2,4-DB	9.817	9.364	79742042	21730947	48.240	49.114
14) T	DINOSEB	10.930	9.672	229.2E6	37954257	34.901	15.212 #
15) T	Picloram	10.803	10.675	123.3E6	98321404	10.331	21.026 #
16) T	DCPA	11.170f	10.600	-7608044	15979073	N.D.	3.619

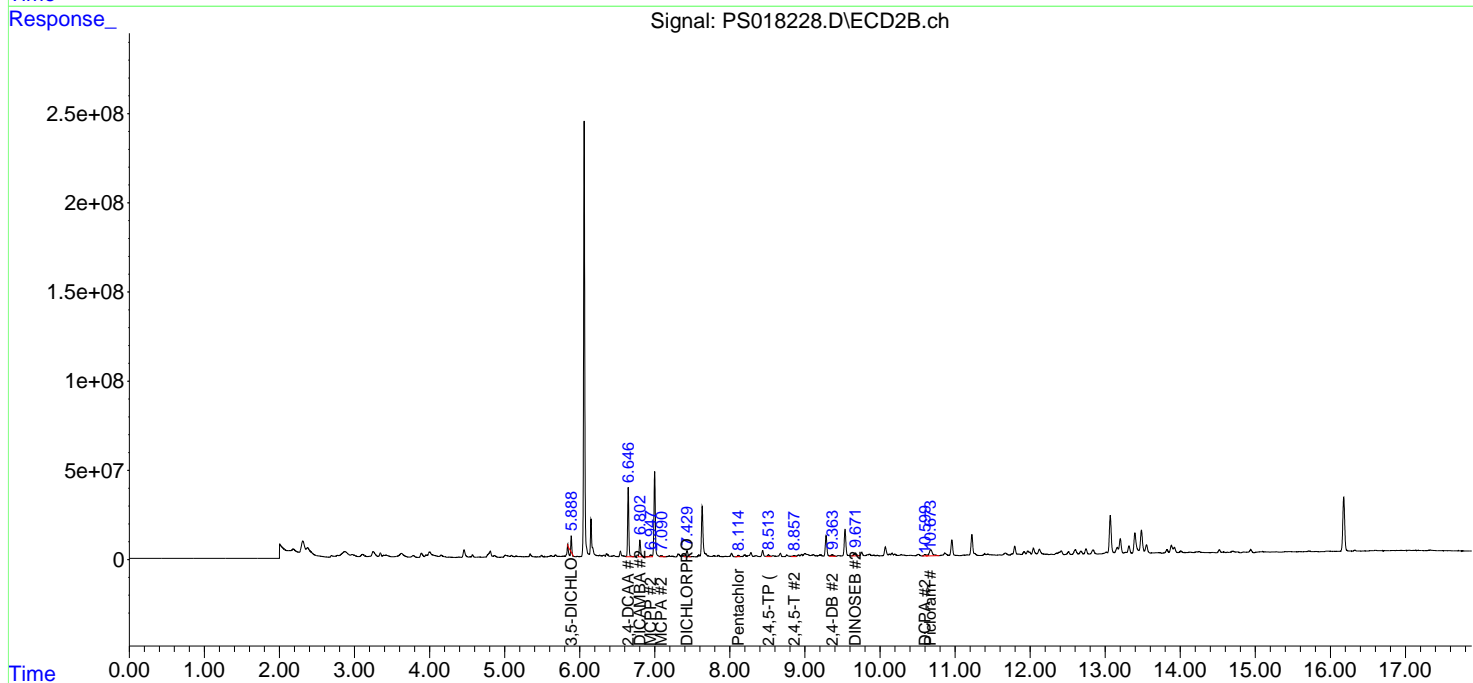
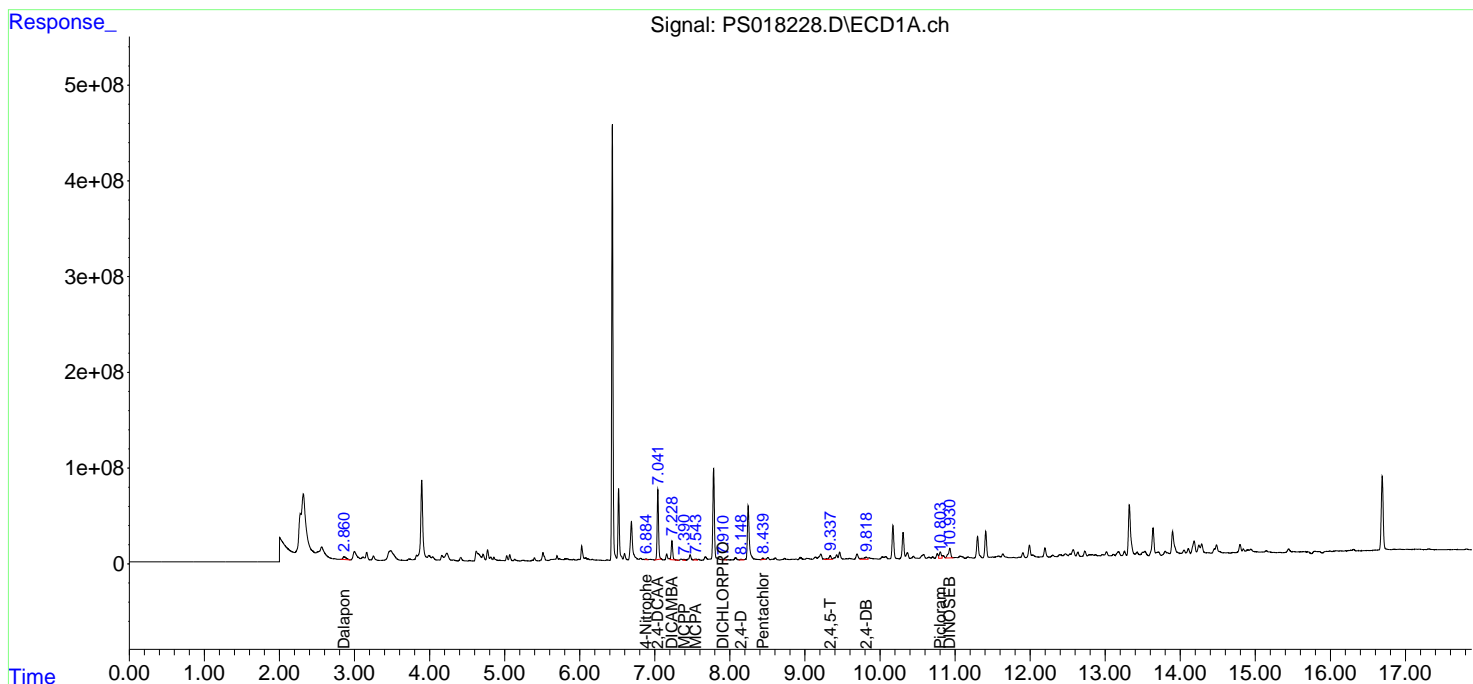
(f)=RT Delta > 1/2 Window (#)=Amounts differ by > 25% (m)=manual int.

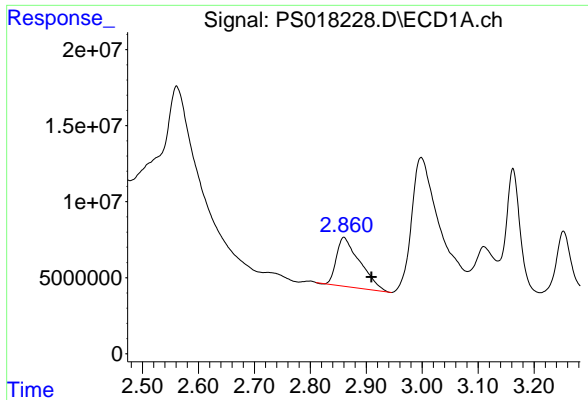
Data Path : Z:\pestpcbsrv\HPCHEM1\ECD_S\Data\PS020322\
 Data File : PS018228.D
 Signal(s) : Signal #1: ECD1A.ch Signal #2: ECD2B.ch
 Acq On : 03 Feb 2022 17:31
 Operator : AJ\MA
 Sample : N1357-01
 Misc :
 ALS Vial : 16 Sample Multiplier: 1

Instrument :
 ECD_S
 ClientSampleId :

Integration File signal 1: autoint1.e
 Integration File signal 2: autoint2.e
 Quant Time: Feb 03 22:26:16 2022
 Quant Method : Z:\pestpcbsrv\HPCHEM1\ECD_S\Method\PS010522.M
 Quant Title : 8080.M
 QLast Update : Thu Jan 06 10:21:08 2022
 Response via : Initial Calibration
 Integrator: ChemStation

Volume Inj. : 2 µl
 Signal #1 Phase : Rtx-CLPesticides Signal #2 Phase: Rtx-CLPesticides2
 Signal #1 Info : 30M x 0.32mm x0.5 Signal #2 Info : 30M x 0.32mm x 0.25µm

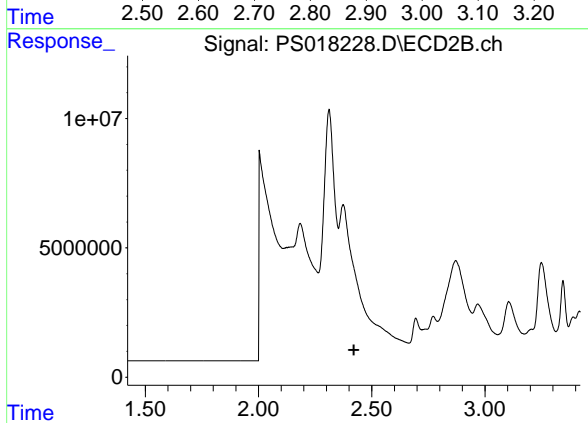




#1 Dalapon

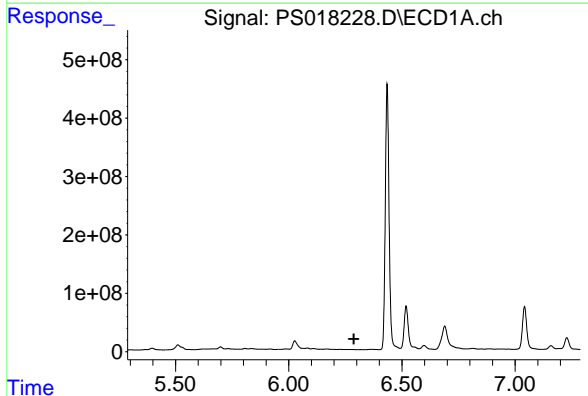
R.T.: 2.860 min
 Delta R.T.: -0.049 min
 Response: 93430229
 Conc: 38.08 ng/ml

Instrument :
 ECD_S
 ClientSampleId :



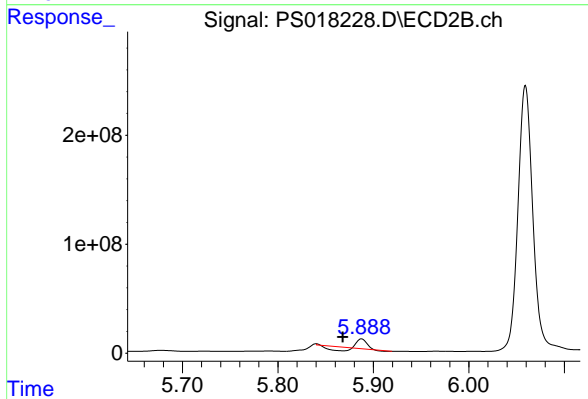
#1 Dalapon

R.T.: 2.374 min
 Delta R.T.: -0.047 min
 Response: -180478007
 Conc: N.D.



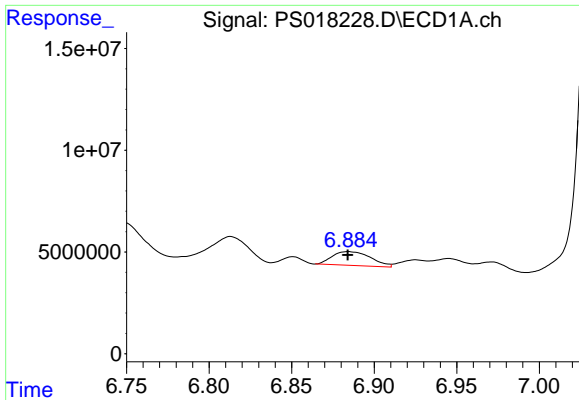
#2 3,5-DICHLOROBENZOIC ACID

R.T.: 0.000 min
 Exp R.T. : 6.288 min
 Response: 0
 Conc: N.D.



#2 3,5-DICHLOROBENZOIC ACID

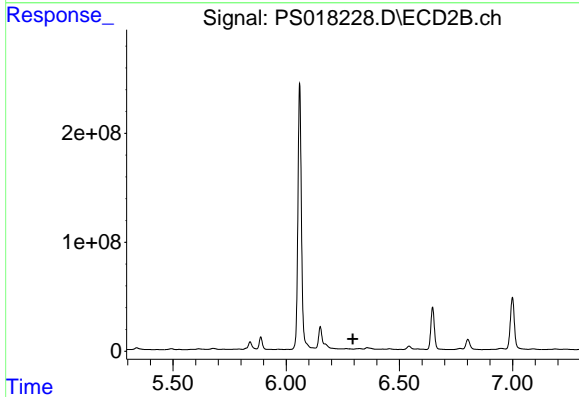
R.T.: 5.888 min
 Delta R.T.: 0.020 min
 Response: 15857167
 Conc: 17.93 ng/ml



#3 4-Nitrophenol

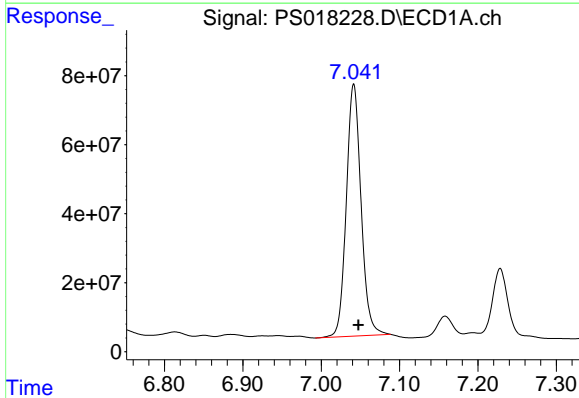
R.T.: 6.884 min
 Delta R.T.: 0.000 min
 Response: 10962627
 Conc: 13.57 ng/ml

Instrument :
 ECD_S
 ClientSampleId :



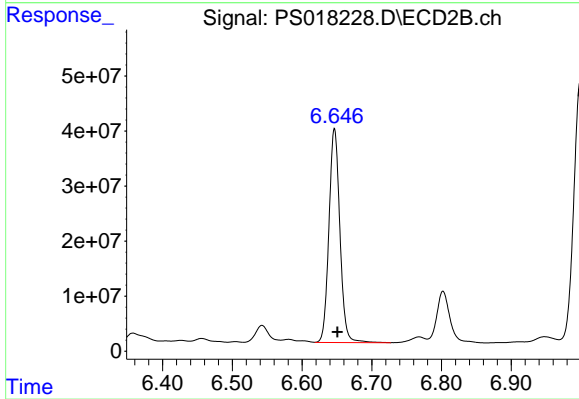
#3 4-Nitrophenol

R.T.: 0.000 min
 Exp R.T. : 6.295 min
 Response: 0
 Conc: N.D.



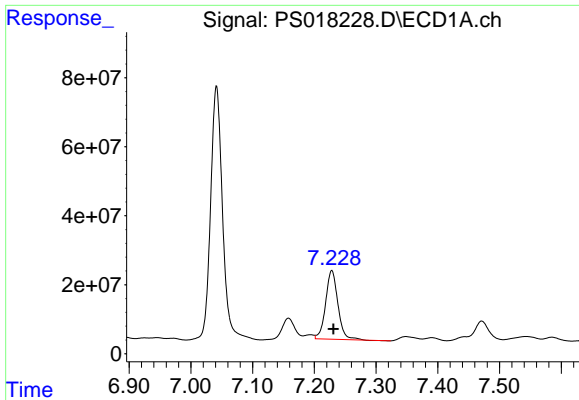
#4 2,4-DCAA

R.T.: 7.042 min
 Delta R.T.: -0.006 min
 Response: 954690674
 Conc: 660.46 ng/ml



#4 2,4-DCAA

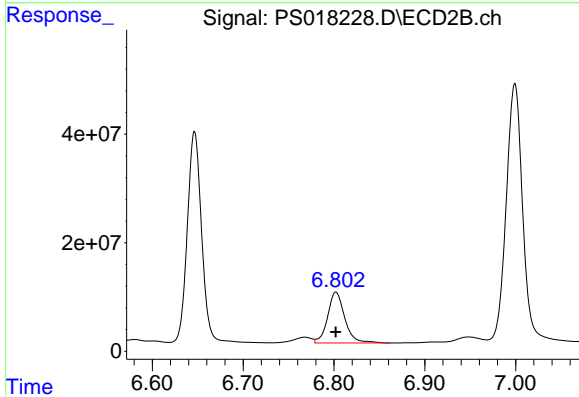
R.T.: 6.647 min
 Delta R.T.: -0.004 min
 Response: 424431598
 Conc: 731.46 ng/ml



#5 DICAMBA

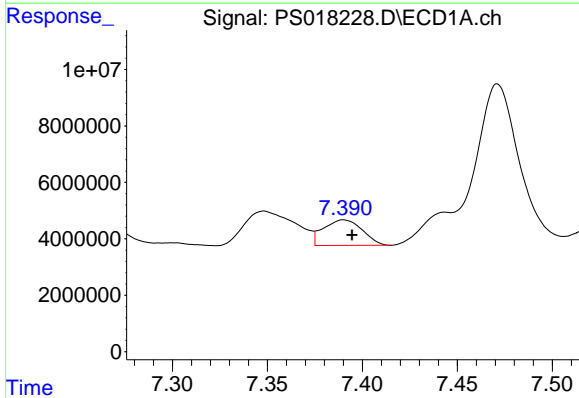
R.T.: 7.228 min
 Delta R.T.: -0.003 min
 Response: 274524855
 Conc: 43.96 ng/ml

Instrument :
 ECD_S
 ClientSampleId :



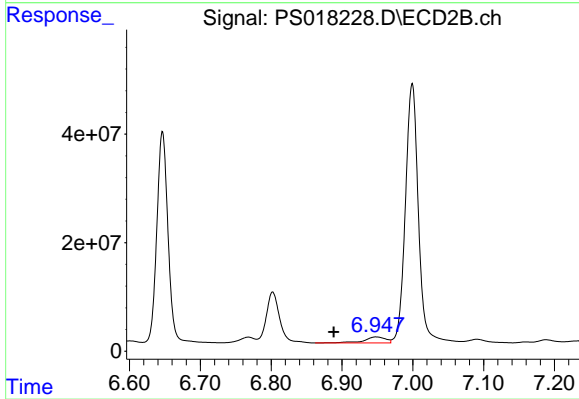
#5 DICAMBA

R.T.: 6.802 min
 Delta R.T.: 0.000 min
 Response: 122551179
 Conc: 46.61 ng/ml



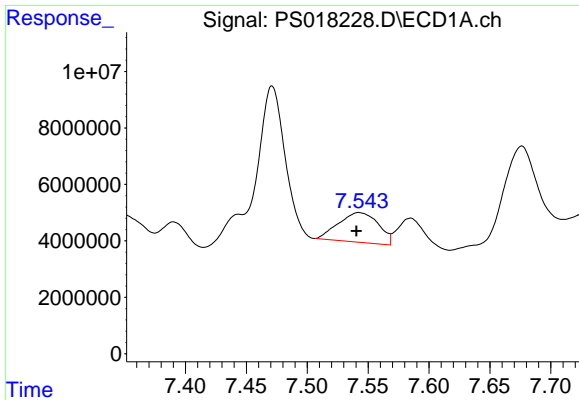
#6 MCPP

R.T.: 7.390 min
 Delta R.T.: -0.004 min
 Response: 12863035
 Conc: 2.76 ug/ml



#6 MCPP

R.T.: 6.948 min
 Delta R.T.: 0.060 min
 Response: 23455924
 Conc: 10.91 ug/ml

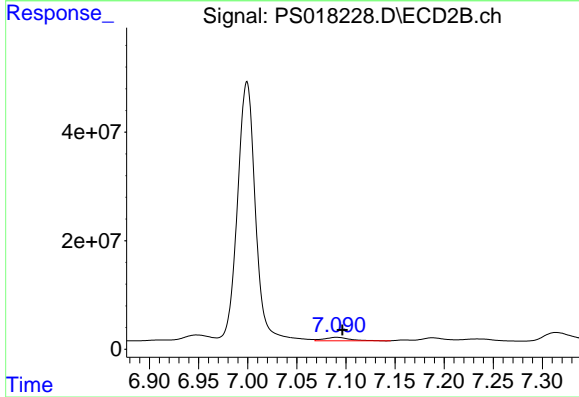


#7 MCPA

R.T.: 7.542 min
 Delta R.T.: 0.002 min
 Response: 23995913
 Conc: 3.60 ug/ml

Instrument :
 ECD_S
 ClientSampleId :

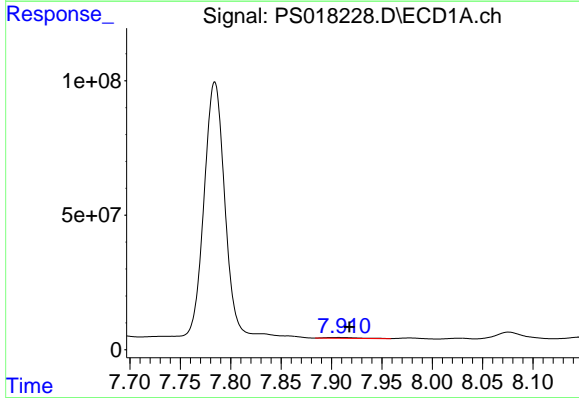
Time 7.40 7.45 7.50 7.55 7.60 7.65 7.70



#7 MCPA

R.T.: 7.091 min
 Delta R.T.: -0.006 min
 Response: 11372650
 Conc: 3.81 ug/ml

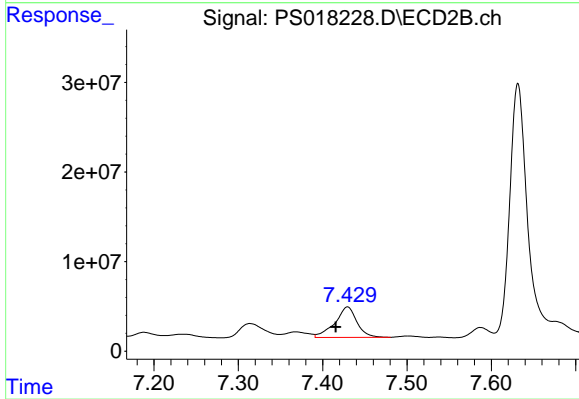
Time 6.90 6.95 7.00 7.05 7.10 7.15 7.20 7.25 7.30



#8 DICHLORPROP

R.T.: 7.908 min
 Delta R.T.: -0.010 min
 Response: 6654949
 Conc: 4.23 ng/ml

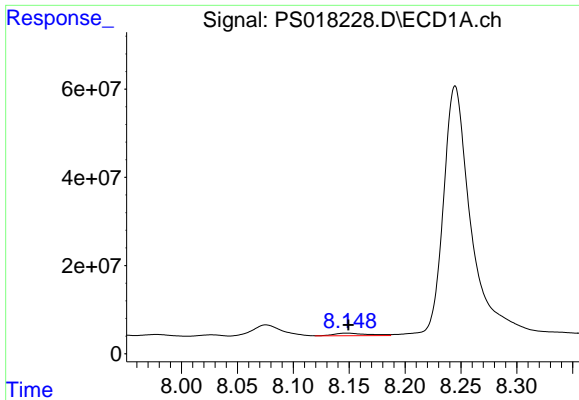
Time 7.70 7.75 7.80 7.85 7.90 7.95 8.00 8.05 8.10



#8 DICHLORPROP

R.T.: 7.429 min
 Delta R.T.: 0.014 min
 Response: 61581071
 Conc: 92.27 ng/ml

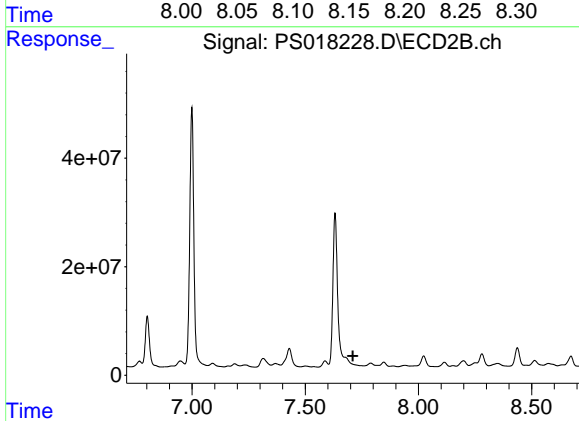
Time 7.20 7.30 7.40 7.50 7.60



#9 2,4-D

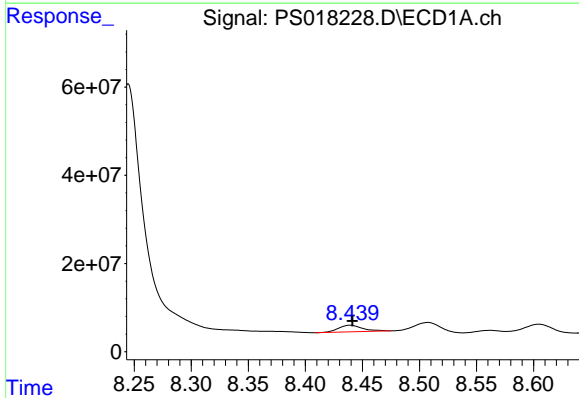
R.T.: 8.148 min
 Delta R.T.: 0.000 min
 Response: 12297099
 Conc: 6.75 ng/ml

Instrument :
 ECD_S
 ClientSampleId :



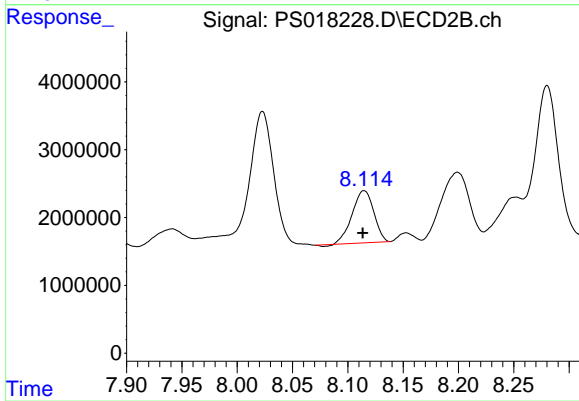
#9 2,4-D

R.T.: 0.000 min
 Exp R.T. : 7.710 min
 Response: 0
 Conc: N.D.



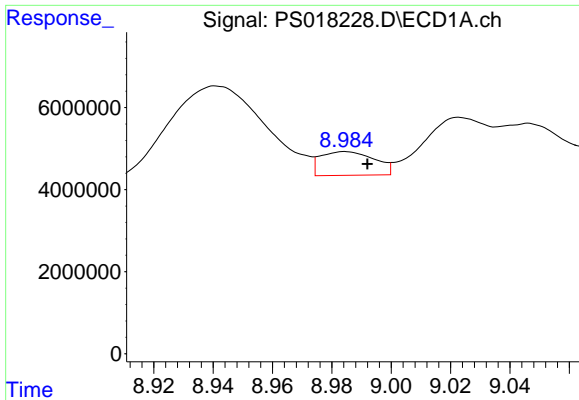
#10 Pentachlorophenol

R.T.: 8.439 min
 Delta R.T.: -0.002 min
 Response: 21998674
 Conc: 1.04 ng/ml



#10 Pentachlorophenol

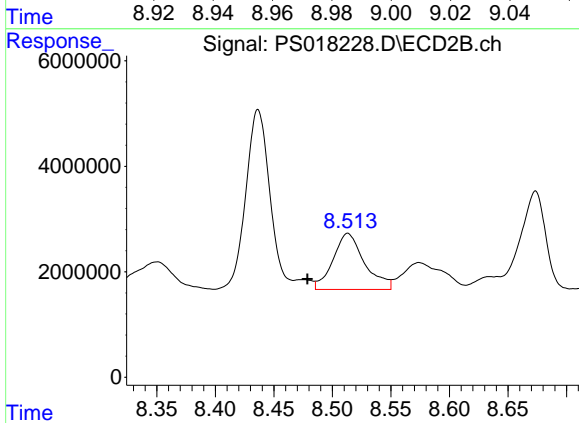
R.T.: 8.115 min
 Delta R.T.: 0.001 min
 Response: 10370291
 Conc: 1.23 ng/ml



#11 2,4,5-TP (SILVEX)

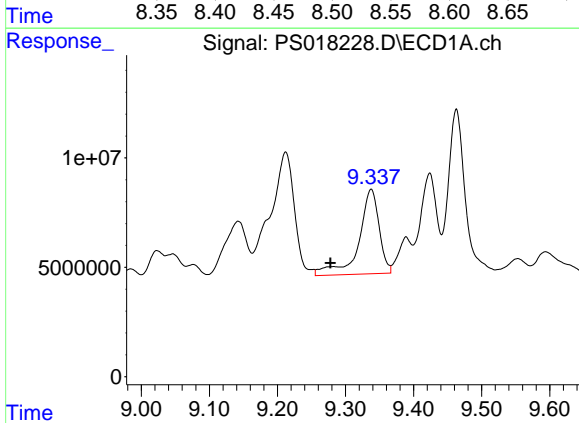
R.T.: 8.984 min
 Delta R.T.: -0.008 min
 Response: 7314229
 Conc: N.D.

Instrument :
 ECD_S
 ClientSampleId :



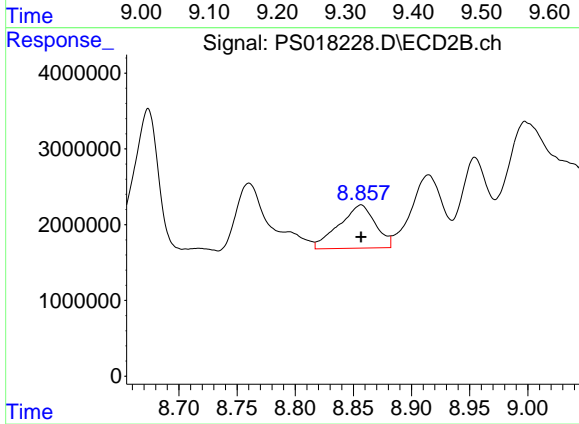
#11 2,4,5-TP (SILVEX)

R.T.: 8.513 min
 Delta R.T.: 0.035 min
 Response: 19954633
 Conc: 5.60 ng/ml



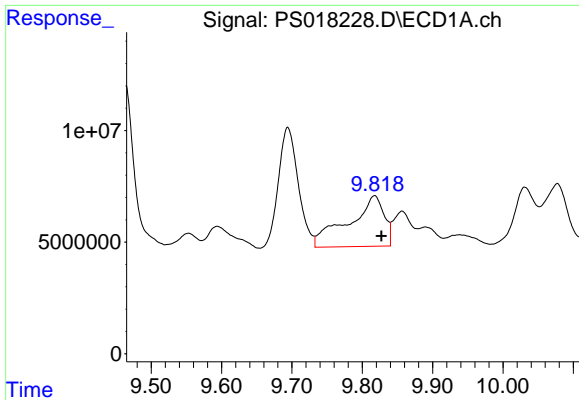
#12 2,4,5-T

R.T.: 9.338 min
 Delta R.T.: 0.060 min
 Response: 80308977
 Conc: 9.06 ng/ml



#12 2,4,5-T

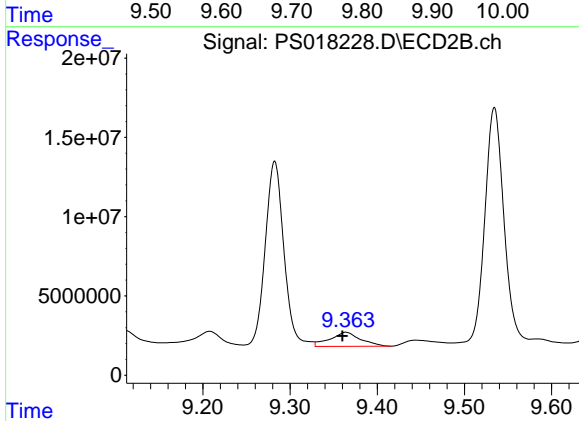
R.T.: 8.856 min
 Delta R.T.: 0.000 min
 Response: 12404754
 Conc: 3.79 ng/ml



#13 2,4-DB

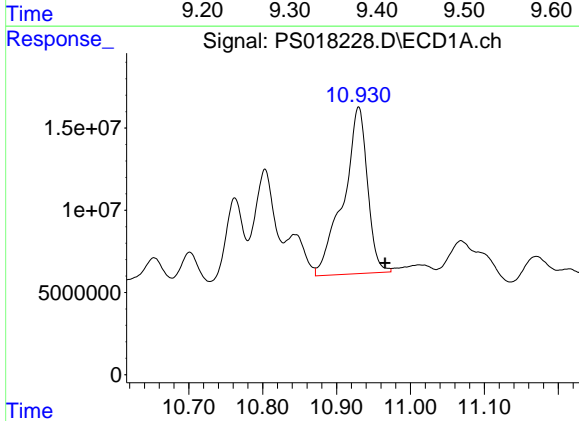
R.T.: 9.817 min
 Delta R.T.: -0.010 min
 Response: 79742042
 Conc: 48.24 ng/ml

Instrument :
 ECD_S
 ClientSampleId :



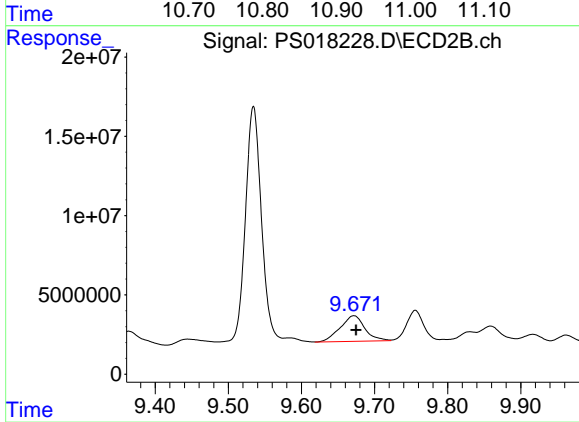
#13 2,4-DB

R.T.: 9.364 min
 Delta R.T.: 0.004 min
 Response: 21730947
 Conc: 49.11 ng/ml



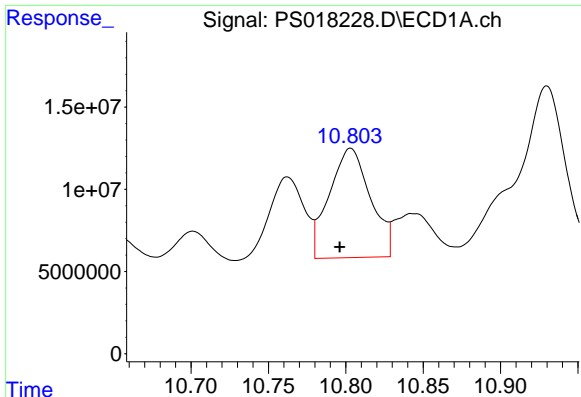
#14 DINOSEB

R.T.: 10.930 min
 Delta R.T.: -0.036 min
 Response: 229195710
 Conc: 34.90 ng/ml



#14 DINOSEB

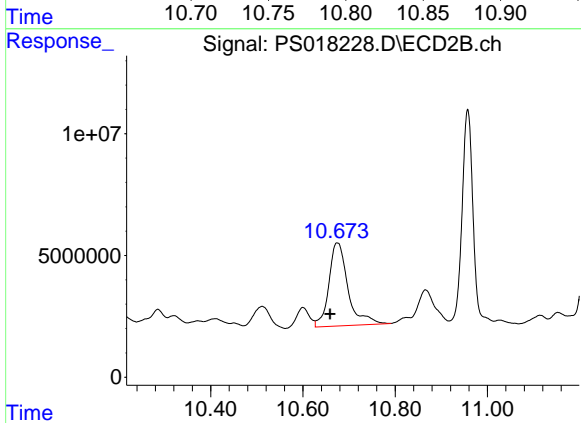
R.T.: 9.672 min
 Delta R.T.: -0.003 min
 Response: 37954257
 Conc: 15.21 ng/ml



#15 Picloram

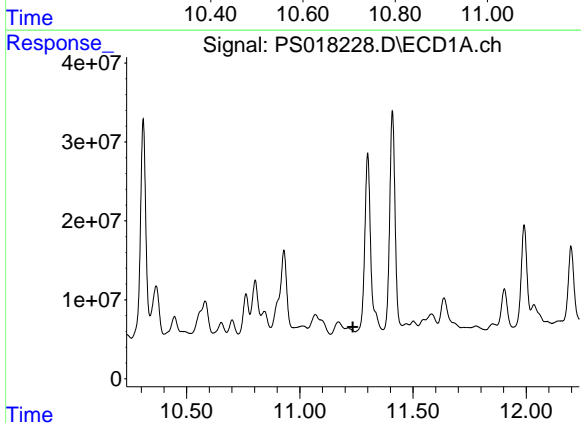
R.T.: 10.803 min
Delta R.T.: 0.007 min
Response: 123314251
Conc: 10.33 ng/ml

Instrument :
ECD_S
ClientSampleId :



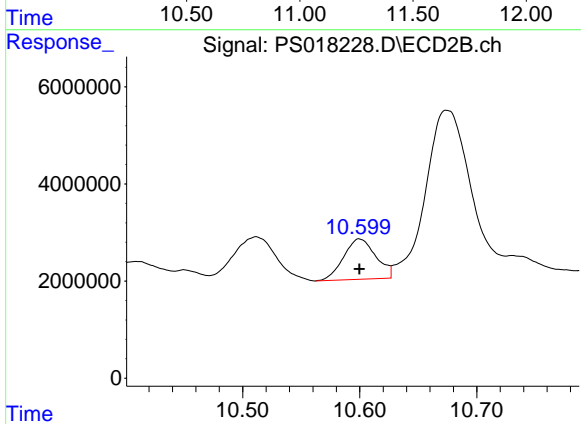
#15 Picloram

R.T.: 10.675 min
Delta R.T.: 0.016 min
Response: 98321404
Conc: 21.03 ng/ml



#16 DCPA

R.T.: 11.170 min
Delta R.T.: -0.064 min
Response: -7608044
Conc: N.D.



#16 DCPA

R.T.: 10.600 min
Delta R.T.: 0.000 min
Response: 15979073
Conc: 3.62 ng/ml