

Data Path : Z:\pestpcbsrv\HPCHEM1\ECD_S\Data\PS040319\
 Data File : PS003935.D
 Signal(s) : Signal #1: ECD1A.ch Signal #2: ECD2B.ch
 Acq On : 03 Apr 2019 11:02
 Operator : EI\SJ
 Sample : PB118521TB
 Misc :
 ALS Vial : 6 Sample Multiplier: 1

Instrument :
 ECD_S
 ClientSampleId :
 PB118521TB

Integration File signal 1: autoint1.e
 Integration File signal 2: autoint2.e
 Quant Time: Apr 03 12:01:39 2019
 Quant Method : Z:\pestpcbsrv\HPCHEM1\ECD_S\Method\PS032619.M
 Quant Title : 8080.M
 QLast Update : Wed Mar 27 05:52:44 2019
 Response via : Initial Calibration
 Integrator: ChemStation

Volume Inj. : 2 µl
 Signal #1 Phase : Rtx-CLPesticides Signal #2 Phase: Rtx-CLPesticides2
 Signal #1 Info : 30M x 0.32mm x0.5 Signal #2 Info : 30M x 0.32mm x 0.25µm

	Compound	RT#1	RT#2	Resp#1	Resp#2	ng/ml	ng/ml

System Monitoring Compounds							
4) S	2,4-DCAA	11.267	10.768	399.3E6	384.5E6	915.483	783.551
Target Compounds							
1) T	Dalapon	2.789	2.277	6198039	7552543	8.314	10.351
2) T	3,5-DICHL...	0.000	8.935	0	587747	N.D.	<MDL
3) T	4-Nitroph...	0.000	9.949	0	11343674	N.D.	49.964
5) T	DICAMBA	0.000	11.012	0	1893355	N.D.	1.018
6) T	MCPD	0.000	11.245	0	235614	N.D.	<MDL
7) T	MCPA	12.220	11.621	9091304	12228657	4.309	6.857 #
9) T	2,4-D	0.000	12.625	0	1394239	N.D.	2.621
10) T	Pentachlo...	0.000	13.178	0	1654768	N.D.	<MDL
11) T	2,4,5-TP ...	0.000	13.813	0	2280466	N.D.	<MDL
12) T	2,4,5-T	0.000	14.386	0	2399487	N.D.	1.104
13) T	2,4-DB	0.000	15.056	0	47098186	N.D.	158.606
14) T	DINOSEB	0.000	15.445	0	3659605	N.D.	1.907
15) T	Picloram	0.000	16.631	0	10583217	N.D.	3.337
16) T	DCPA	0.000	16.631	0	10583217	N.D.	3.131

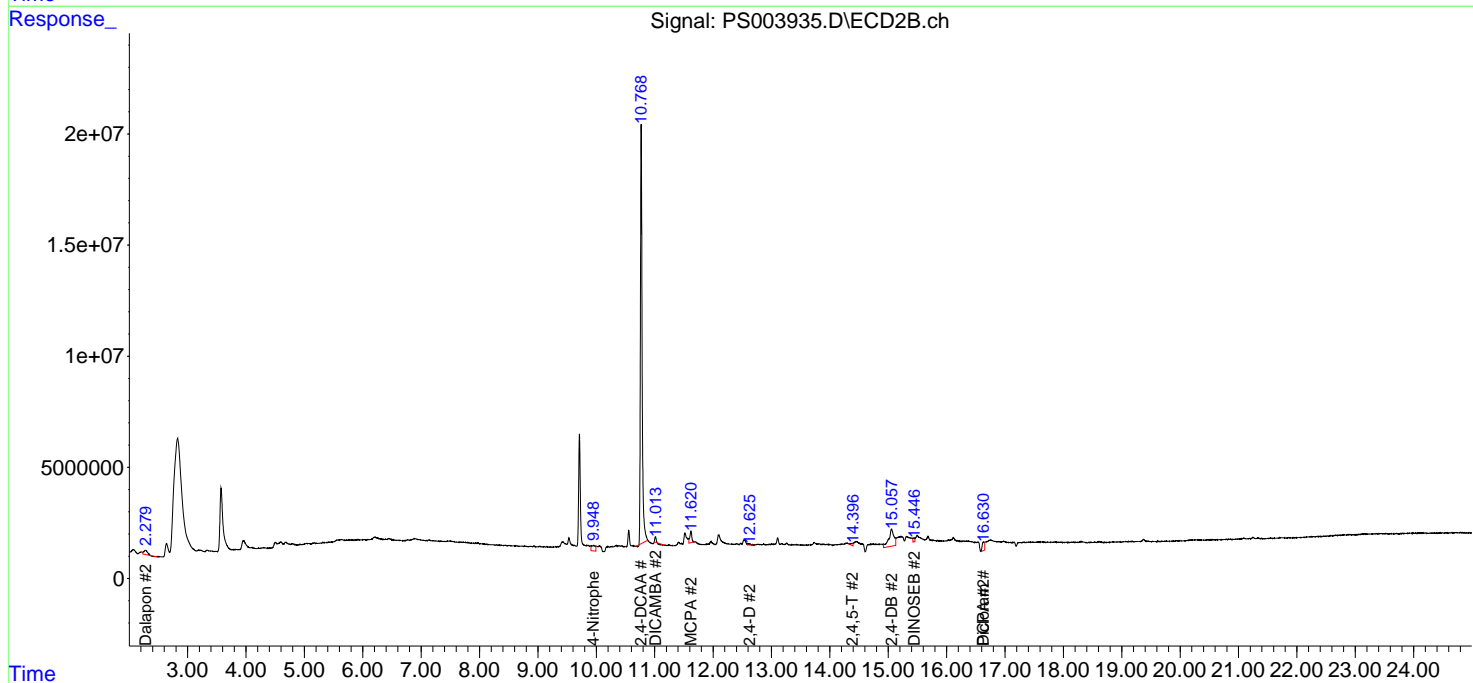
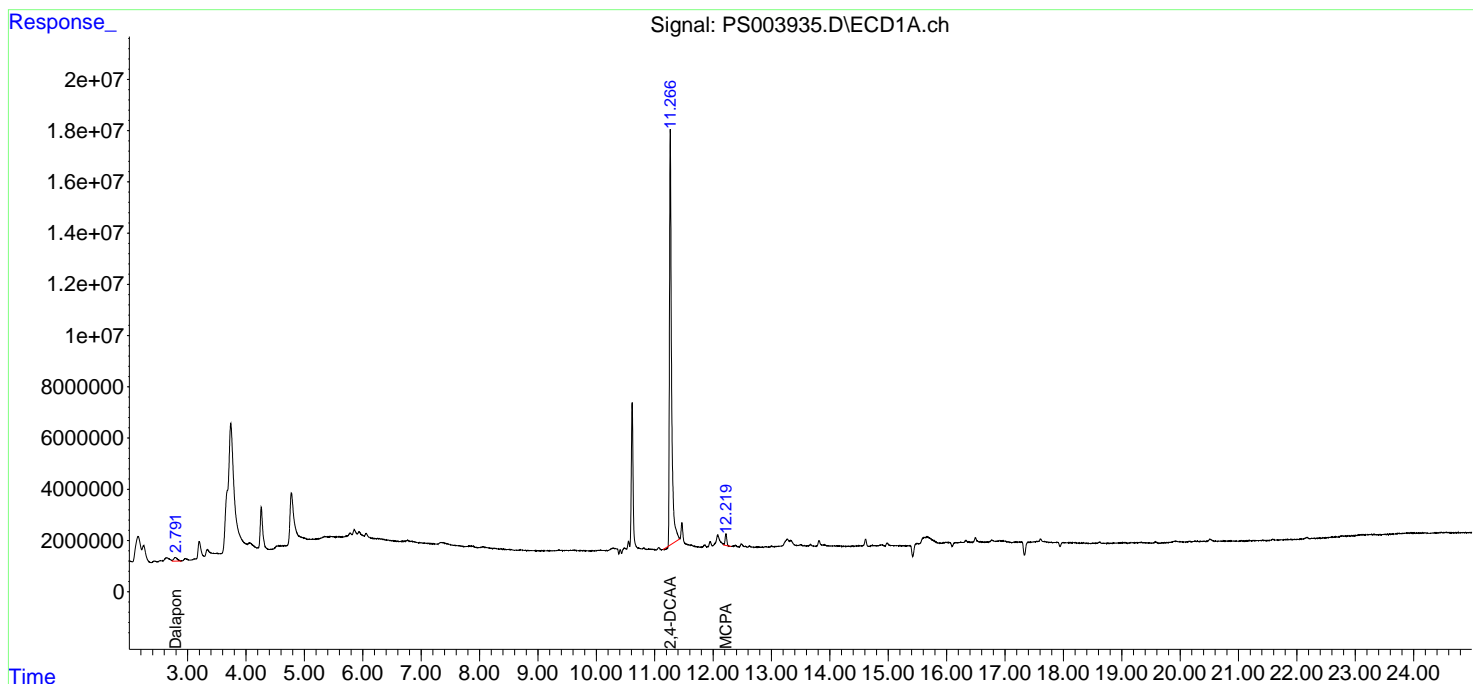
(f)=RT Delta > 1/2 Window (#)=Amounts differ by > 25% (m)=manual int.

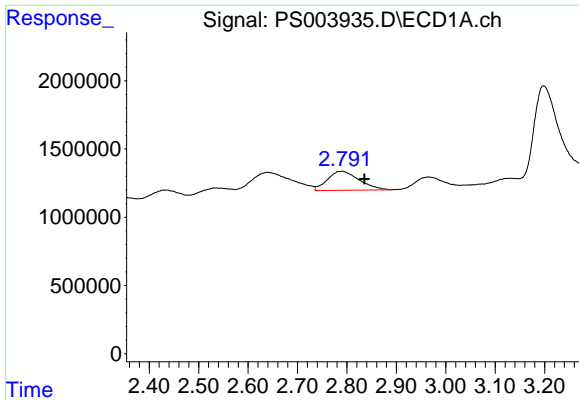
Data Path : Z:\pestpcbsrv\HPCHEM1\ECD_S\Data\PS040319\
 Data File : PS003935.D
 Signal(s) : Signal #1: ECD1A.ch Signal #2: ECD2B.ch
 Acq On : 03 Apr 2019 11:02
 Operator : EI\SJ
 Sample : PB118521TB
 Misc :
 ALS Vial : 6 Sample Multiplier: 1

Instrument :
 ECD_S
 ClientSampleID :
 PB118521TB

Integration File signal 1: autoint1.e
 Integration File signal 2: autoint2.e
 Quant Time: Apr 03 12:01:39 2019
 Quant Method : Z:\pestpcbsrv\HPCHEM1\ECD_S\Method\PS032619.M
 Quant Title : 8080.M
 QLast Update : Wed Mar 27 05:52:44 2019
 Response via : Initial Calibration
 Integrator: ChemStation

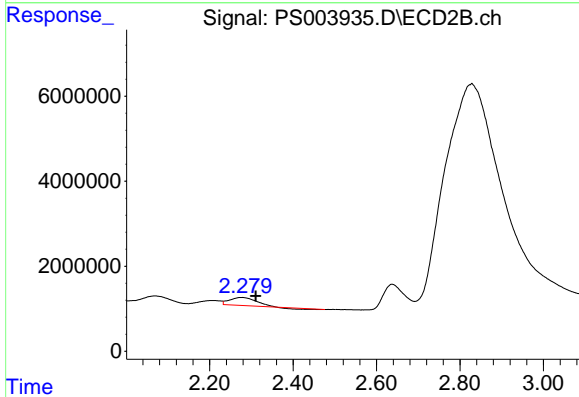
Volume Inj. : 2 µl
 Signal #1 Phase : Rtx-CLPesticides Signal #2 Phase: Rtx-CLPesticides2
 Signal #1 Info : 30M x 0.32mm x0.5 Signal #2 Info : 30M x 0.32mm x 0.25µm



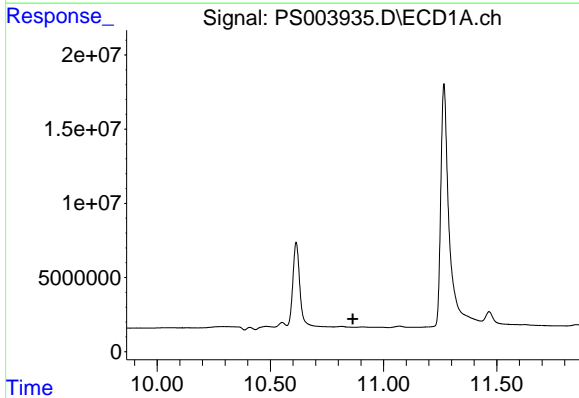


#1 Dalapon
 R.T.: 2.789 min
 Delta R.T.: -0.046 min
 Response: 6198039
 Conc: 8.31 ng/ml

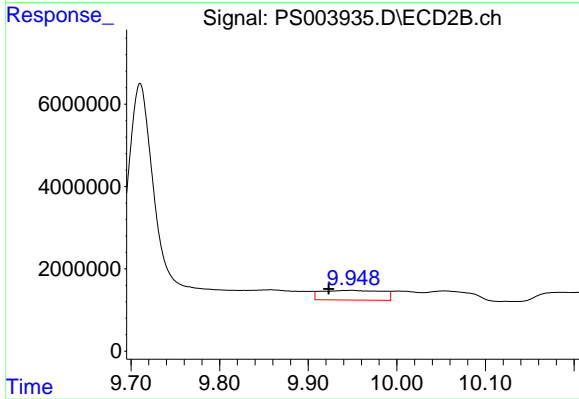
Instrument :
 ECD_S
 ClientSampleId :
 PB118521TB



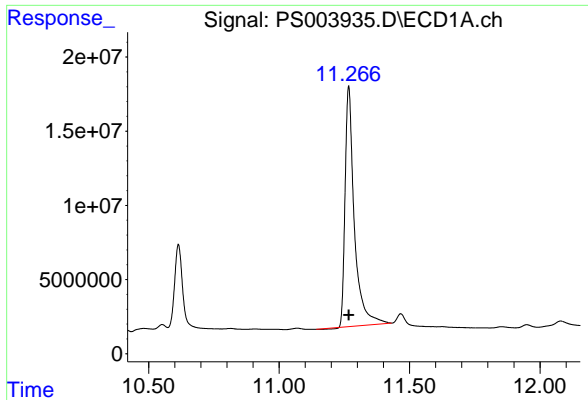
#1 Dalapon
 R.T.: 2.277 min
 Delta R.T.: -0.033 min
 Response: 7552543
 Conc: 10.35 ng/ml



#3 4-Nitrophenol
 R.T.: 0.000 min
 Exp R.T. : 10.865 min
 Response: 0
 Conc: N.D.



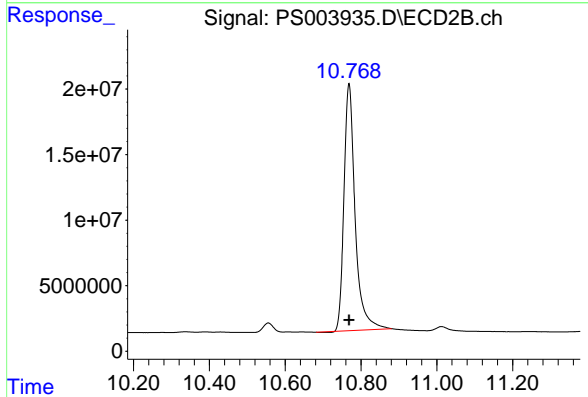
#3 4-Nitrophenol
 R.T.: 9.949 min
 Delta R.T.: 0.025 min
 Response: 11343674
 Conc: 49.96 ng/ml



#4 2,4-DCAA

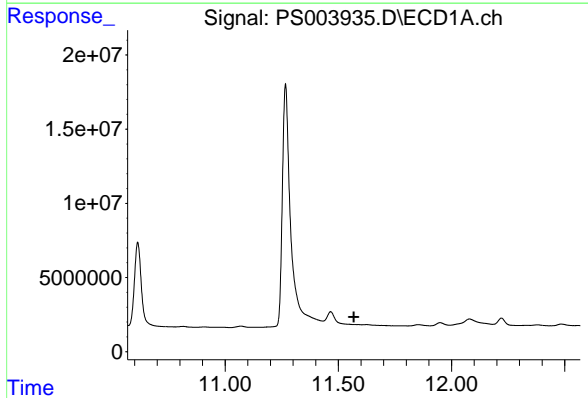
R.T.: 11.267 min
 Delta R.T.: 0.000 min
 Response: 399345046
 Conc: 915.48 ng/ml

Instrument :
 ECD_S
 ClientSampleId :
 PB118521TB



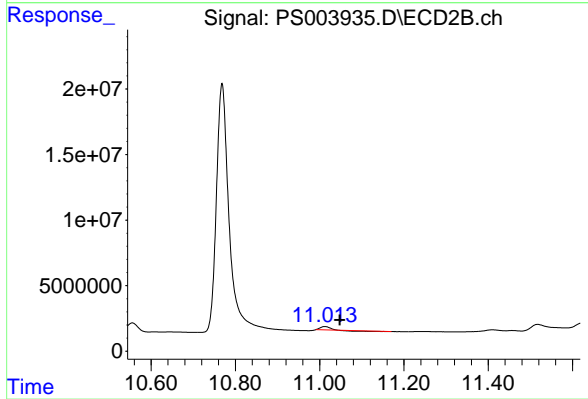
#4 2,4-DCAA

R.T.: 10.768 min
 Delta R.T.: 0.000 min
 Response: 384455603
 Conc: 783.55 ng/ml



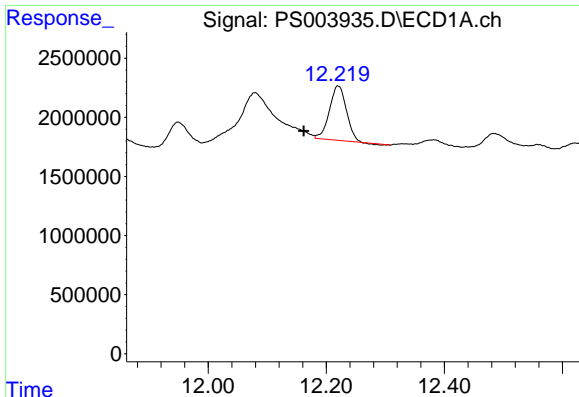
#5 DICAMBA

R.T.: 0.000 min
 Exp R.T. : 11.569 min
 Response: 0
 Conc: N.D.



#5 DICAMBA

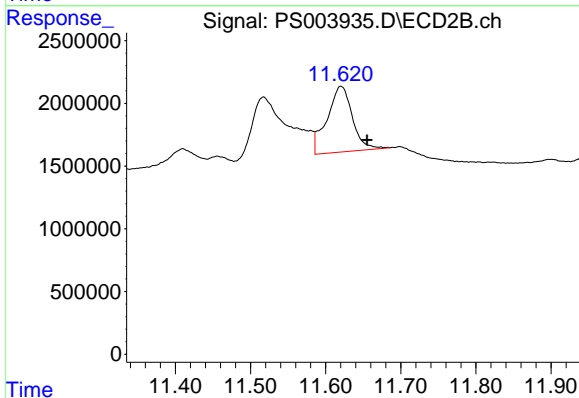
R.T.: 11.012 min
 Delta R.T.: -0.035 min
 Response: 1893355
 Conc: 1.02 ng/ml



#7 MCPA

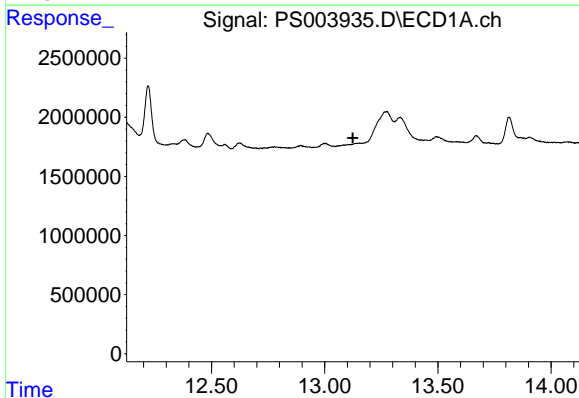
R.T.: 12.220 min
 Delta R.T.: 0.058 min
 Response: 9091304
 Conc: 4.31 ug/ml

Instrument :
 ECD_S
 ClientSampleId :
 PB118521TB



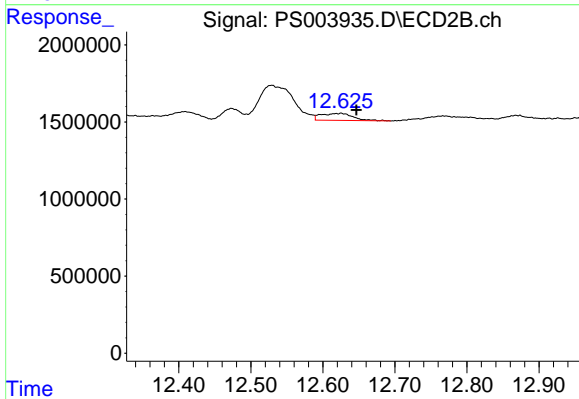
#7 MCPA

R.T.: 11.621 min
 Delta R.T.: -0.035 min
 Response: 12228657
 Conc: 6.86 ug/ml



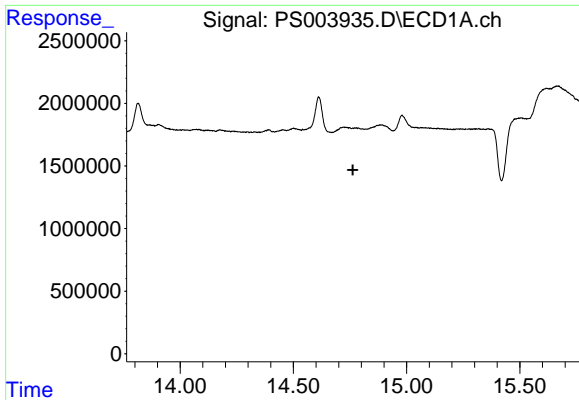
#9 2,4-D

R.T.: 0.000 min
 Exp R.T. : 13.125 min
 Response: 0
 Conc: N.D.



#9 2,4-D

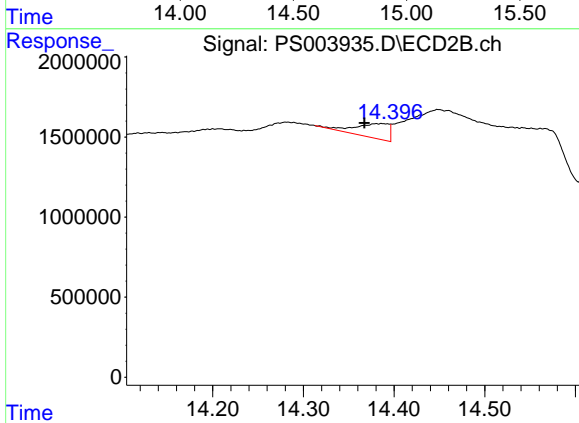
R.T.: 12.625 min
 Delta R.T.: -0.022 min
 Response: 1394239
 Conc: 2.62 ng/ml



#12 2,4,5-T

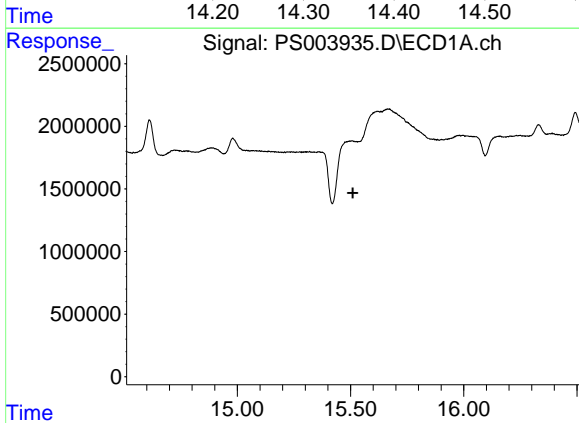
R.T.: 0.000 min
 Exp R.T.: 14.763 min
 Response: 0
 Conc: N.D.

Instrument :
 ECD_S
 ClientSampleId :
 PB118521TB



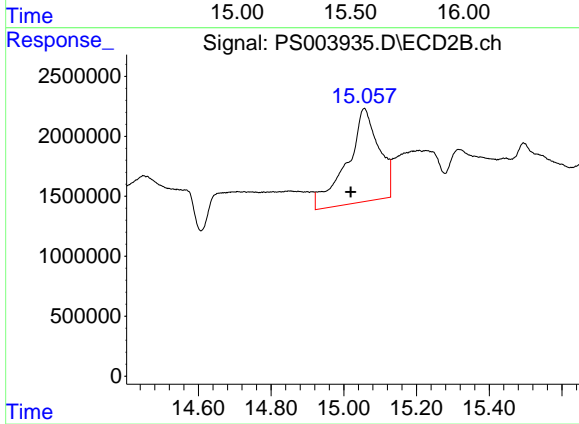
#12 2,4,5-T

R.T.: 14.386 min
 Delta R.T.: 0.019 min
 Response: 2399487
 Conc: 1.10 ng/ml



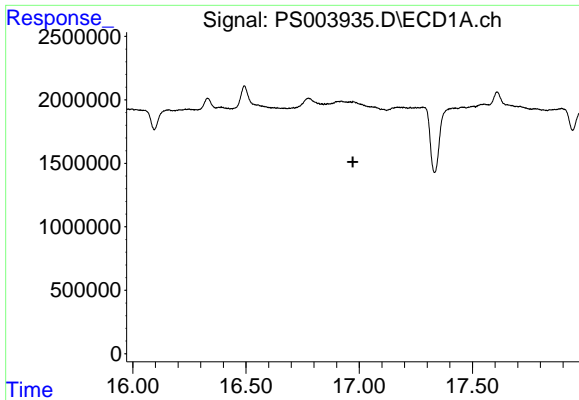
#13 2,4-DB

R.T.: 0.000 min
 Exp R.T.: 15.510 min
 Response: 0
 Conc: N.D.



#13 2,4-DB

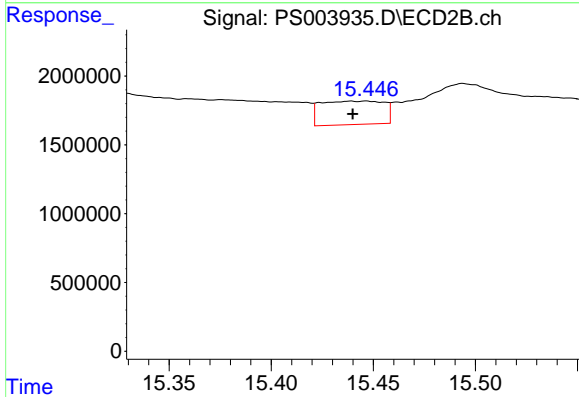
R.T.: 15.056 min
 Delta R.T.: 0.038 min
 Response: 47098186
 Conc: 158.61 ng/ml



#14 DINOSEB

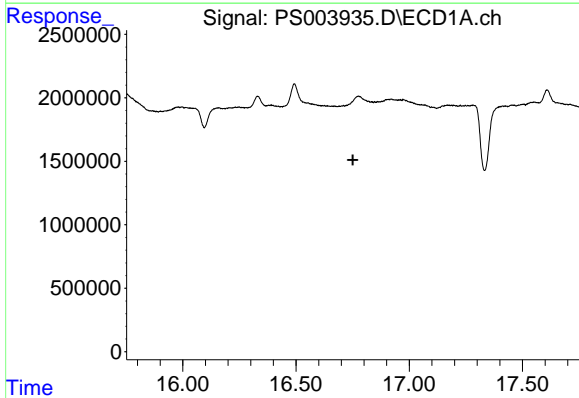
R.T.: 0.000 min
 Exp R.T.: 16.972 min
 Response: 0
 Conc: N.D.

Instrument :
 ECD_S
 ClientSampleId :
 PB118521TB



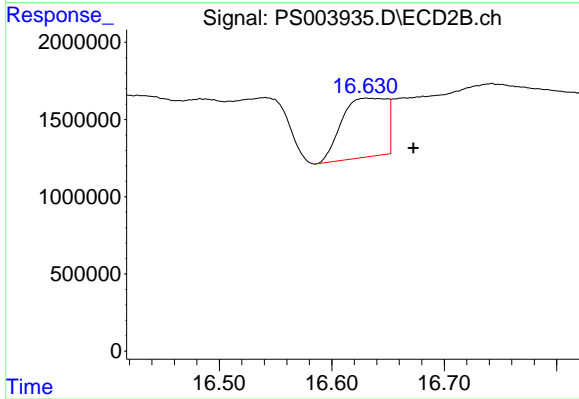
#14 DINOSEB

R.T.: 15.445 min
 Delta R.T.: 0.005 min
 Response: 3659605
 Conc: 1.91 ng/ml



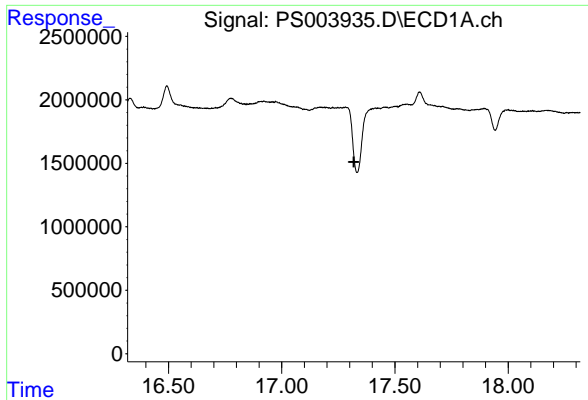
#15 Picloram

R.T.: 0.000 min
 Exp R.T.: 16.752 min
 Response: 0
 Conc: N.D.



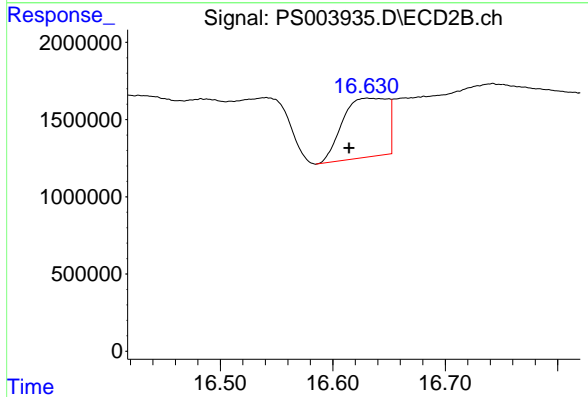
#15 Picloram

R.T.: 16.631 min
 Delta R.T.: -0.041 min
 Response: 10583217
 Conc: 3.34 ng/ml



#16 DCPA
 R.T.: 0.000 min
 Exp R.T.: 17.319 min
 Response: 0
 Conc: N.D.

Instrument :
 ECD_S
 ClientSampleId :
 PB118521TB



#16 DCPA
 R.T.: 16.631 min
 Delta R.T.: 0.017 min
 Response: 10583217
 Conc: 3.13 ng/ml