

Data Path : Z:\pestpcbsrv\HPCHEM1\ECD_S\Data\PS040419\
 Data File : PS003951.D
 Signal(s) : Signal #1: ECD1A.ch Signal #2: ECD2B.ch
 Acq On : 04 Apr 2019 12:09
 Operator : EI\SJ
 Sample : K2190-06
 Misc :
 ALS Vial : 6 Sample Multiplier: 1

Instrument :
 ECD_S
 ClientSampleId :
 VN-SP-2

Integration File signal 1: autoint1.e
 Integration File signal 2: autoint2.e
 Quant Time: Apr 04 13:13:28 2019
 Quant Method : Z:\pestpcbsrv\HPCHEM1\ECD_S\Method\PS032619.M
 Quant Title : 8080.M
 QLast Update : Wed Mar 27 05:52:44 2019
 Response via : Initial Calibration
 Integrator: ChemStation

Volume Inj. : 2 µl
 Signal #1 Phase : Rtx-CLPesticides Signal #2 Phase: Rtx-CLPesticides2
 Signal #1 Info : 30M x 0.32mm x0.5 Signal #2 Info : 30M x 0.32mm x 0.25µm

	Compound	RT#1	RT#2	Resp#1	Resp#2	ng/ml	ng/ml

System Monitoring Compounds							
4) S	2,4-DCAA	11.271	10.774	340.2E6	303.3E6	779.838	618.122
Target Compounds							
2) T	3,5-DICHL...	0.000	8.942	0	4189460	N.D.	6.568
3) T	4-Nitroph...	0.000	9.947	0	9507692	N.D.	41.878
5) T	DICAMBA	0.000	11.014	0	6134565	N.D.	3.299
6) T	MCPP	0.000	11.254	0	392494	N.D.	<MDL
7) T	MCPA	12.133	11.671	292.7E6	243105	138.737	<MDL #
10) T	Pentachlo...	13.494	13.184	6050960	4939318	<MDL	<MDL #
11) T	2,4,5-TP ...	0.000	13.811	0	4791046	N.D.	1.809
12) T	2,4,5-T	0.000	14.366	0	3067393	N.D.	1.411
14) T	DINOSEB	0.000	15.449	0	3290780	N.D.	1.715
15) T	Picloram	16.768	16.633	4488809	11333058	1.321	3.574 #
16) T	DCPA	0.000	16.633	0	11333058	N.D.	3.353

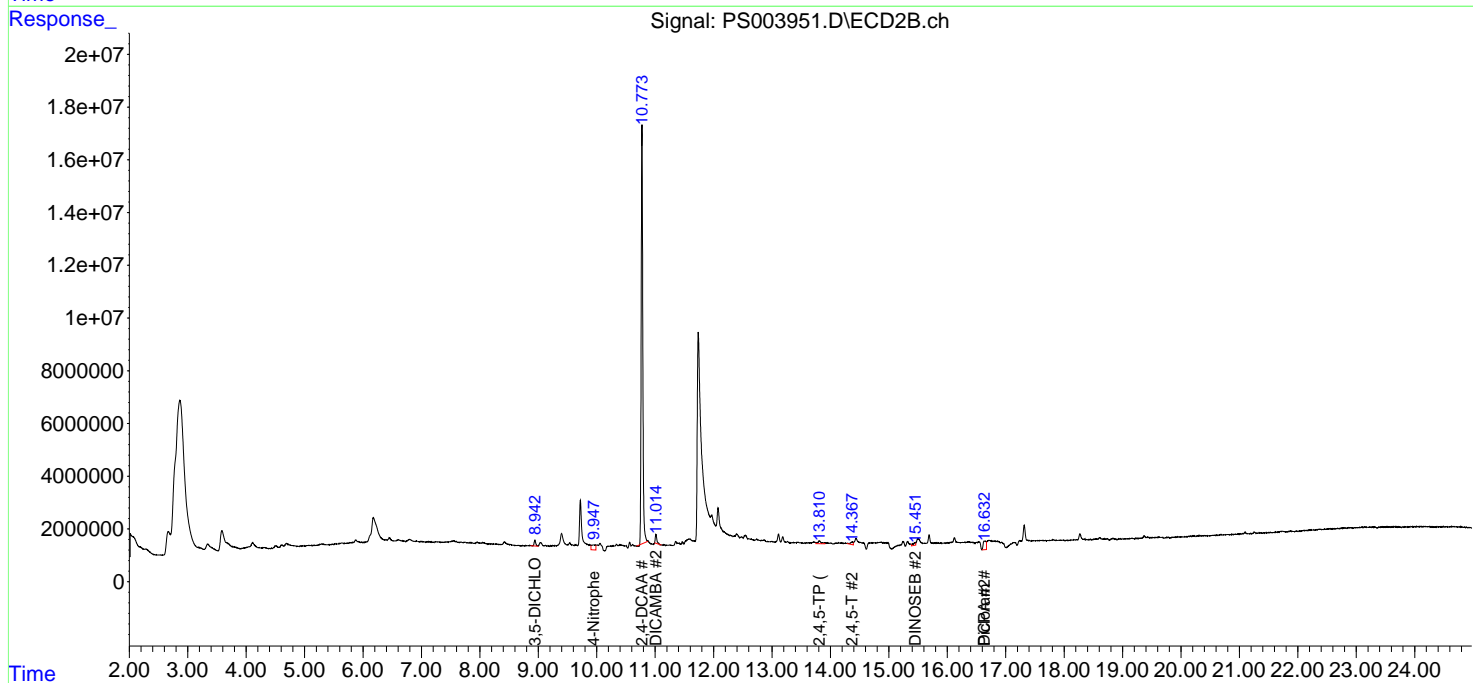
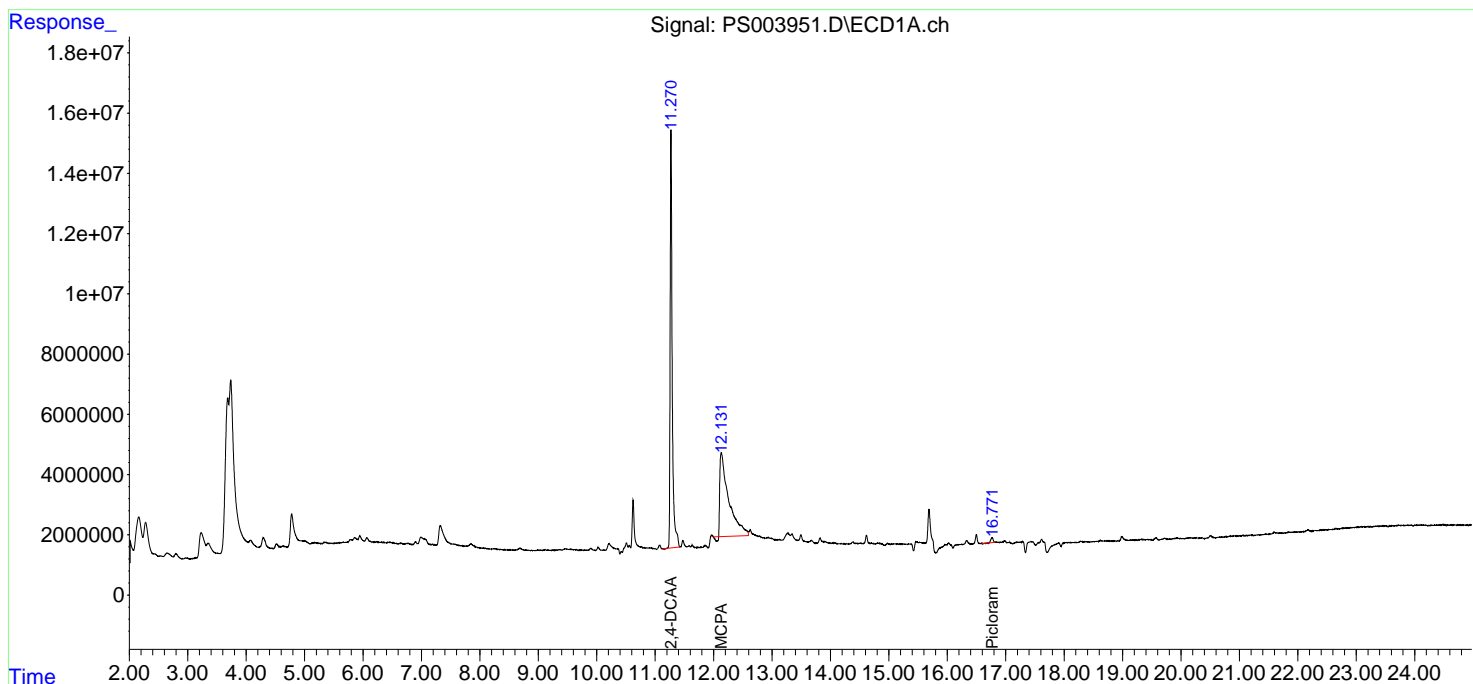
(f)=RT Delta > 1/2 Window (#)=Amounts differ by > 25% (m)=manual int.

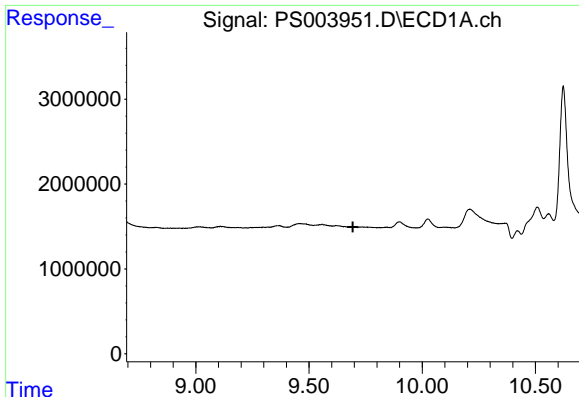
Data Path : Z:\pestpcbsrv\HPCHEM1\ECD_S\Data\PS040419\
 Data File : PS003951.D
 Signal(s) : Signal #1: ECD1A.ch Signal #2: ECD2B.ch
 Acq On : 04 Apr 2019 12:09
 Operator : EI\SJ
 Sample : K2190-06
 Misc :
 ALS Vial : 6 Sample Multiplier: 1

Instrument :
 ECD_S
 ClientSampleId :
 VN-SP-2

Integration File signal 1: autoint1.e
 Integration File signal 2: autoint2.e
 Quant Time: Apr 04 13:13:28 2019
 Quant Method : Z:\pestpcbsrv\HPCHEM1\ECD_S\Method\PS032619.M
 Quant Title : 8080.M
 QLast Update : Wed Mar 27 05:52:44 2019
 Response via : Initial Calibration
 Integrator: ChemStation

Volume Inj. : 2 µl
 Signal #1 Phase : Rtx-CLPesticides Signal #2 Phase: Rtx-CLPesticides2
 Signal #1 Info : 30M x 0.32mm x 0.5 Signal #2 Info : 30M x 0.32mm x 0.25µm

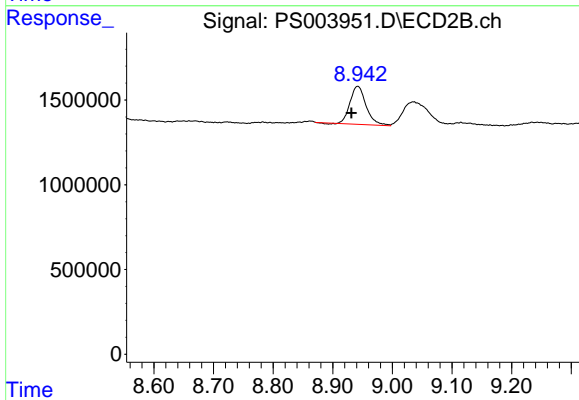




#2 3,5-DICHLOROBENZOIC ACID

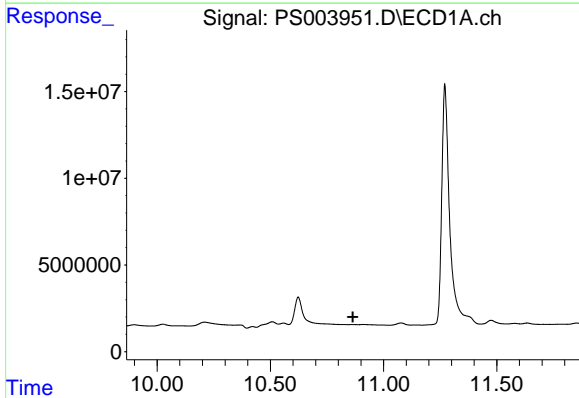
R.T.: 0.000 min
 Exp R.T. : 9.693 min
 Response: 0
 Conc: N.D.

Instrument :
 ECD_S
 ClientSampled :
 VN-SP-2



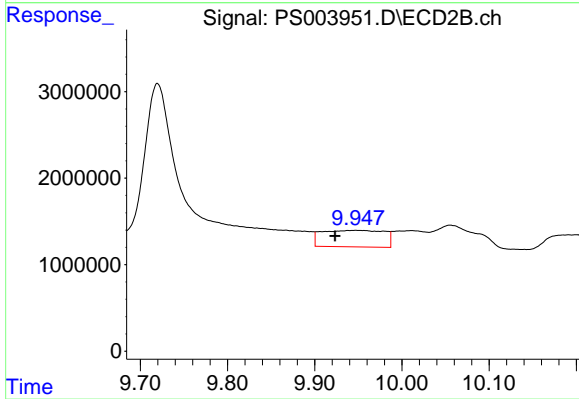
#2 3,5-DICHLOROBENZOIC ACID

R.T.: 8.942 min
 Delta R.T.: 0.011 min
 Response: 4189460
 Conc: 6.57 ng/ml



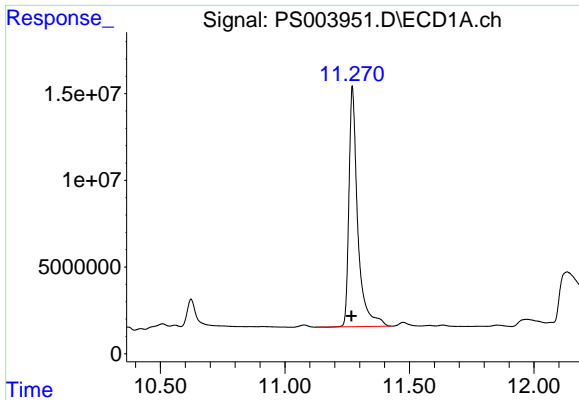
#3 4-Nitrophenol

R.T.: 0.000 min
 Exp R.T. : 10.865 min
 Response: 0
 Conc: N.D.



#3 4-Nitrophenol

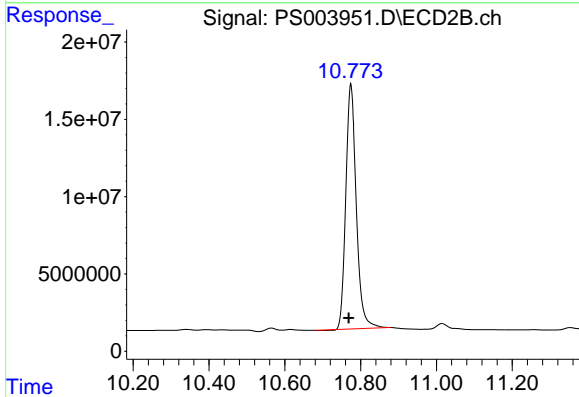
R.T.: 9.947 min
 Delta R.T.: 0.024 min
 Response: 9507692
 Conc: 41.88 ng/ml



#4 2,4-DCAA

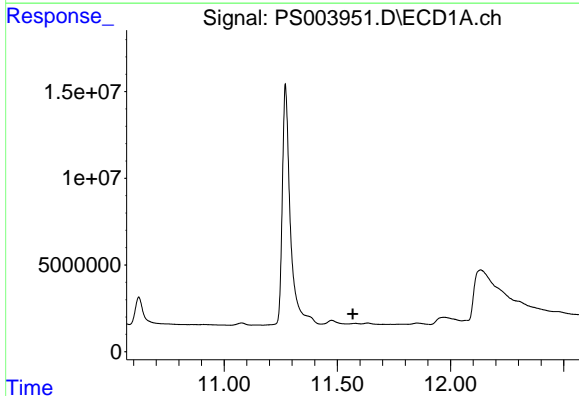
R.T.: 11.271 min
 Delta R.T.: 0.004 min
 Response: 340174823
 Conc: 779.84 ng/ml

Instrument :
 ECD_S
 ClientSampled :
 VN-SP-2



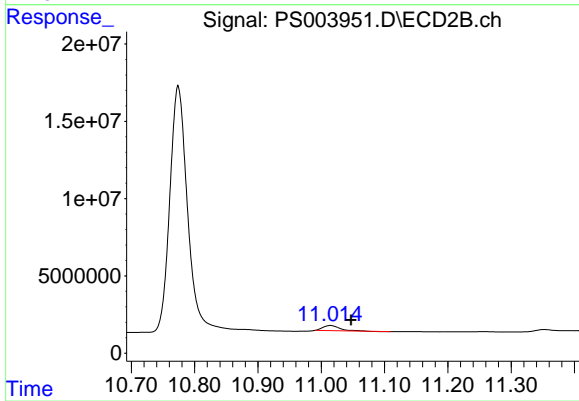
#4 2,4-DCAA

R.T.: 10.774 min
 Delta R.T.: 0.005 min
 Response: 303286941
 Conc: 618.12 ng/ml



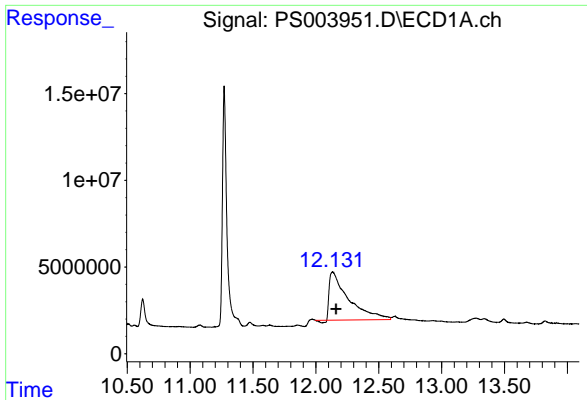
#5 DICAMBA

R.T.: 0.000 min
 Exp R.T. : 11.569 min
 Response: 0
 Conc: N.D.



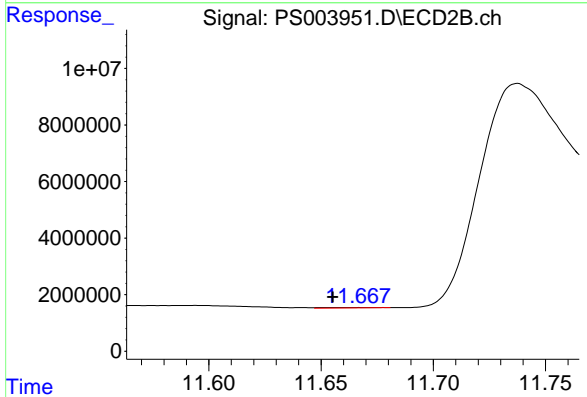
#5 DICAMBA

R.T.: 11.014 min
 Delta R.T.: -0.033 min
 Response: 6134565
 Conc: 3.30 ng/ml

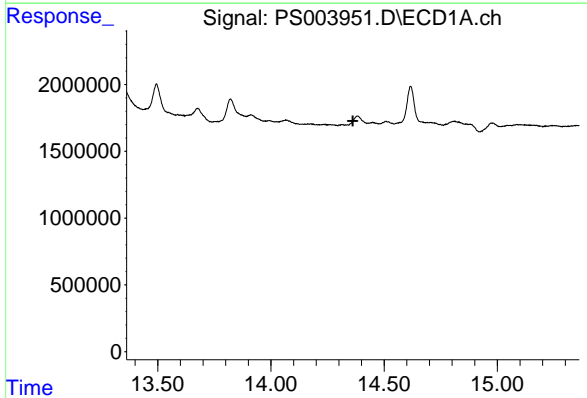


#7 MCPA
 R.T.: 12.133 min
 Delta R.T.: -0.029 min
 Response: 292704540
 Conc: 138.74 ug/ml

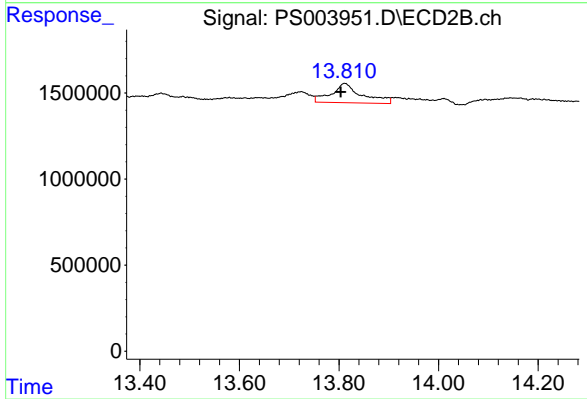
Instrument :
 ECD_S
 ClientSampled :
 VN-SP-2



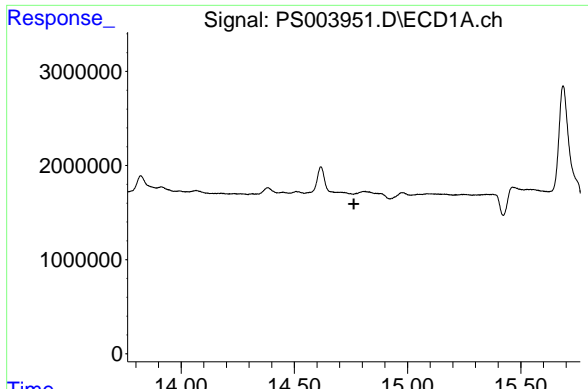
#7 MCPA
 R.T.: 11.671 min
 Delta R.T.: 0.016 min
 Response: 243105
 Conc: N.D.



#11 2,4,5-TP (SILVEX)
 R.T.: 0.000 min
 Exp R.T. : 14.362 min
 Response: 0
 Conc: N.D.

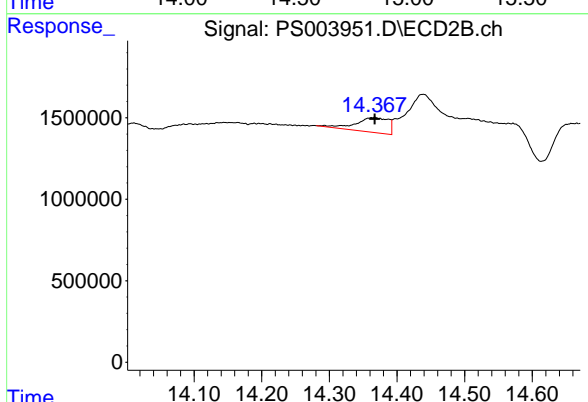


#11 2,4,5-TP (SILVEX)
 R.T.: 13.811 min
 Delta R.T.: 0.008 min
 Response: 4791046
 Conc: 1.81 ng/ml

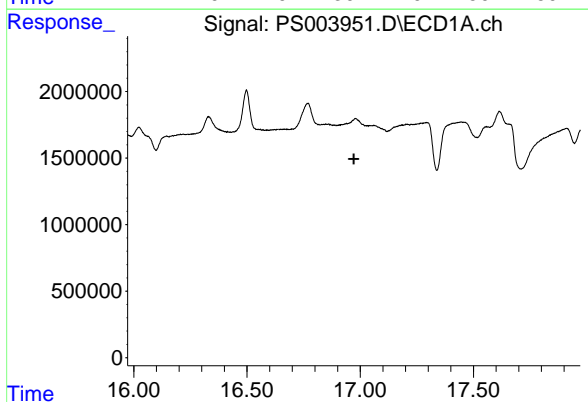


#12 2,4,5-T
 R.T.: 0.000 min
 Exp R.T.: 14.763 min
 Response: 0
 Conc: N.D.

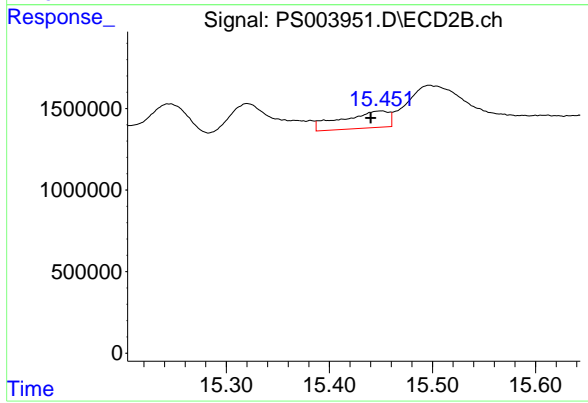
Instrument :
 ECD_S
 ClientSampled :
 VN-SP-2



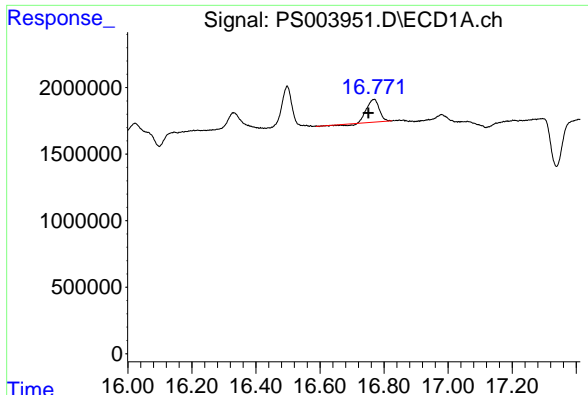
#12 2,4,5-T
 R.T.: 14.366 min
 Delta R.T.: 0.000 min
 Response: 3067393
 Conc: 1.41 ng/ml



#14 DINOSEB
 R.T.: 0.000 min
 Exp R.T.: 16.972 min
 Response: 0
 Conc: N.D.



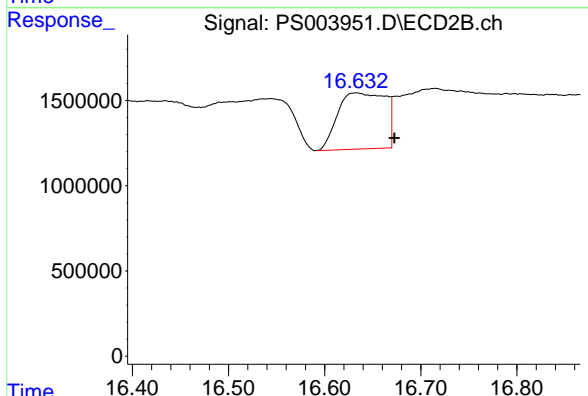
#14 DINOSEB
 R.T.: 15.449 min
 Delta R.T.: 0.009 min
 Response: 3290780
 Conc: 1.72 ng/ml



#15 Picloram

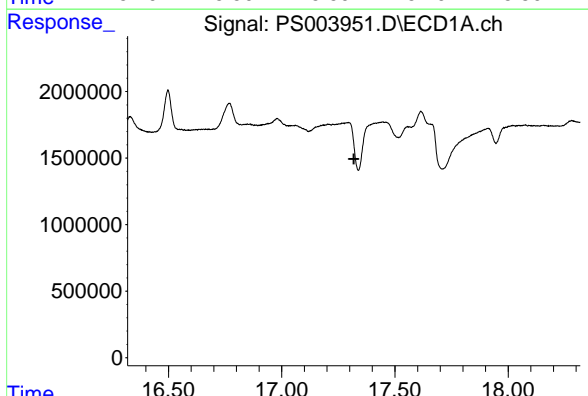
R.T.: 16.768 min
 Delta R.T.: 0.017 min
 Response: 4488809
 Conc: 1.32 ng/ml

Instrument :
 ECD_S
 ClientSampleId :
 VN-SP-2



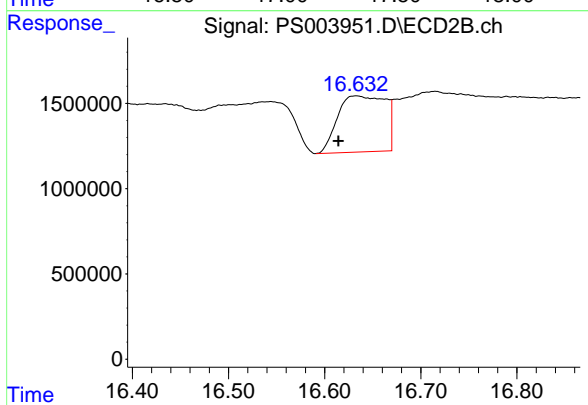
#15 Picloram

R.T.: 16.633 min
 Delta R.T.: -0.040 min
 Response: 11333058
 Conc: 3.57 ng/ml



#16 DCPA

R.T.: 0.000 min
 Exp R.T. : 17.319 min
 Response: 0
 Conc: N.D.



#16 DCPA

R.T.: 16.633 min
 Delta R.T.: 0.018 min
 Response: 11333058
 Conc: 3.35 ng/ml