

Data Path : Z:\pestpcbsrv\HPCHEM1\ECD_S\Data\PS041119\
 Data File : PS004027.D
 Signal(s) : Signal #1: ECD1A.ch Signal #2: ECD2B.ch
 Acq On : 11 Apr 2019 11:44
 Operator : EI\SJ
 Sample : HSTDICC200
 Misc :
 ALS Vial : 3 Sample Multiplier: 1

Instrument :
 ECD_S
 ClientSampleId :

Integration File signal 1: autoint1.e
 Integration File signal 2: autoint2.e
 Quant Time: Apr 11 14:05:22 2019
 Quant Method : Z:\pestpcbsrv\HPCHEM1\ECD_S\Method\PS041119.M
 Quant Title : 8080.M
 QLast Update : Thu Apr 11 14:05:00 2019
 Response via : Initial Calibration
 Integrator: ChemStation

Volume Inj. : 2 µl
 Signal #1 Phase : Rtx-CLPesticides Signal #2 Phase: Rtx-CLPesticides2
 Signal #1 Info : 30M x 0.32mm x0.5 Signal #2 Info : 30M x 0.32mm x 0.25µm

	Compound	RT#1	RT#2	Resp#1	Resp#2	ng/ml	ng/ml

System Monitoring Compounds							
4) S	2,4-DCAA	11.220	10.716	104.9E6	86126779	219.805	184.283
Target Compounds							
1) T	Dalapon	2.826	2.312	127.4E6	113.1E6	185.962	177.779
2) T	3,5-DICHL...	9.650	8.881	123.5E6	106.6E6	165.936	188.644
3) T	4-Nitroph...	10.864	9.882	40269871	40733643	154.382	162.183
5) T	DICAMBA	11.510	10.989	350.7E6	285.8E6	176.319	169.302
6) T	MCP P	11.844	11.214	20179684	16405233	14.941	15.143
7) T	MCPA	12.094	11.588	34651289	35288959	16.579	19.800
8) T	DICHLORPROP	12.706	12.117	87474845	78211574	177.867	182.097
9) T	2,4-D	13.091	12.597	69660563	93569904	147.469	180.621
10) T	Pentachlo...	13.420	13.114	1287.6E6	1131.7E6	172.105	176.488
11) T	2,4,5-TP ...	14.304	13.746	461.8E6	423.9E6	165.465	171.277
12) T	2,4,5-T	14.717	14.313	508.2E6	416.6E6	167.275	173.489
13) T	2,4-DB	15.467	14.965	44362242	47671833	131.180	146.260
14) T	DINOSEB	16.903	15.378	495.0E6	328.9E6	198.513	170.777
15) T	Picloram	16.708	16.616	553.8E6	565.2E6	148.753	159.876
16) T	DCPA	17.250	16.616	672.3E6	565.2E6	184.993	172.639

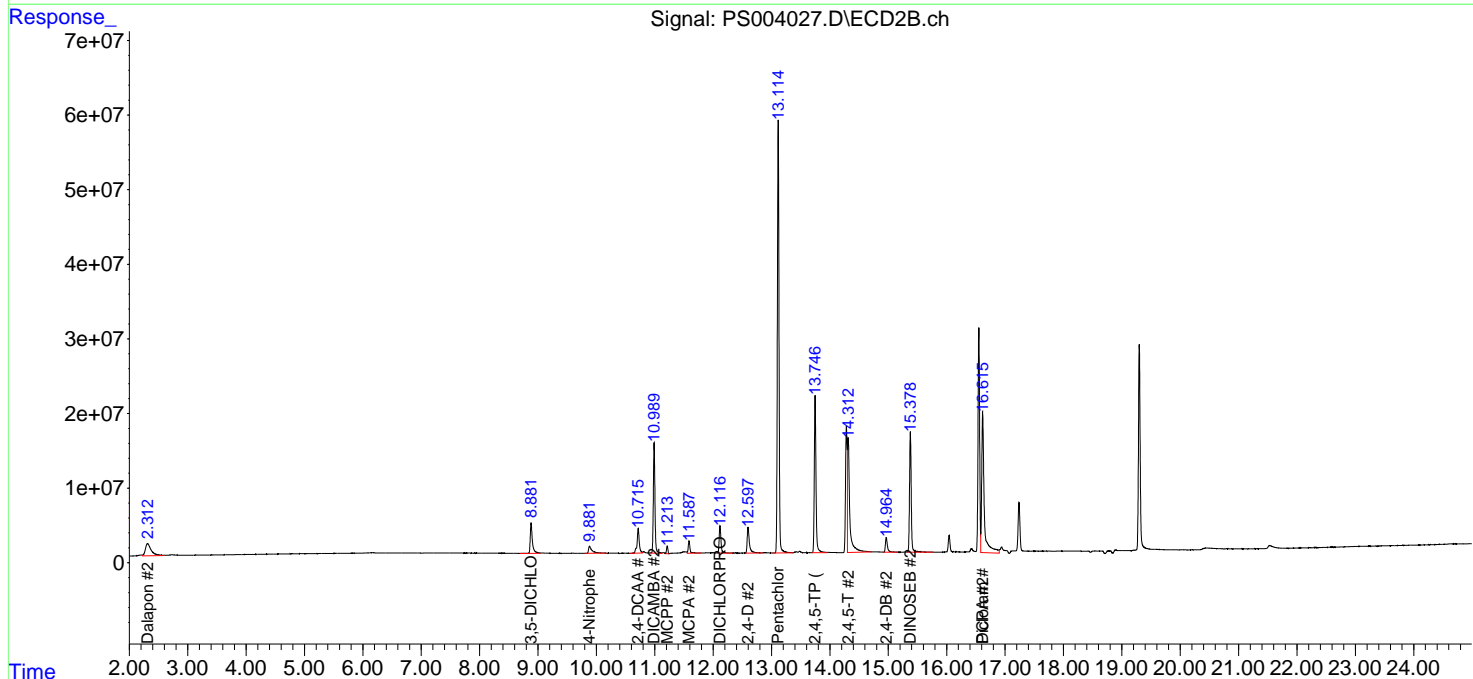
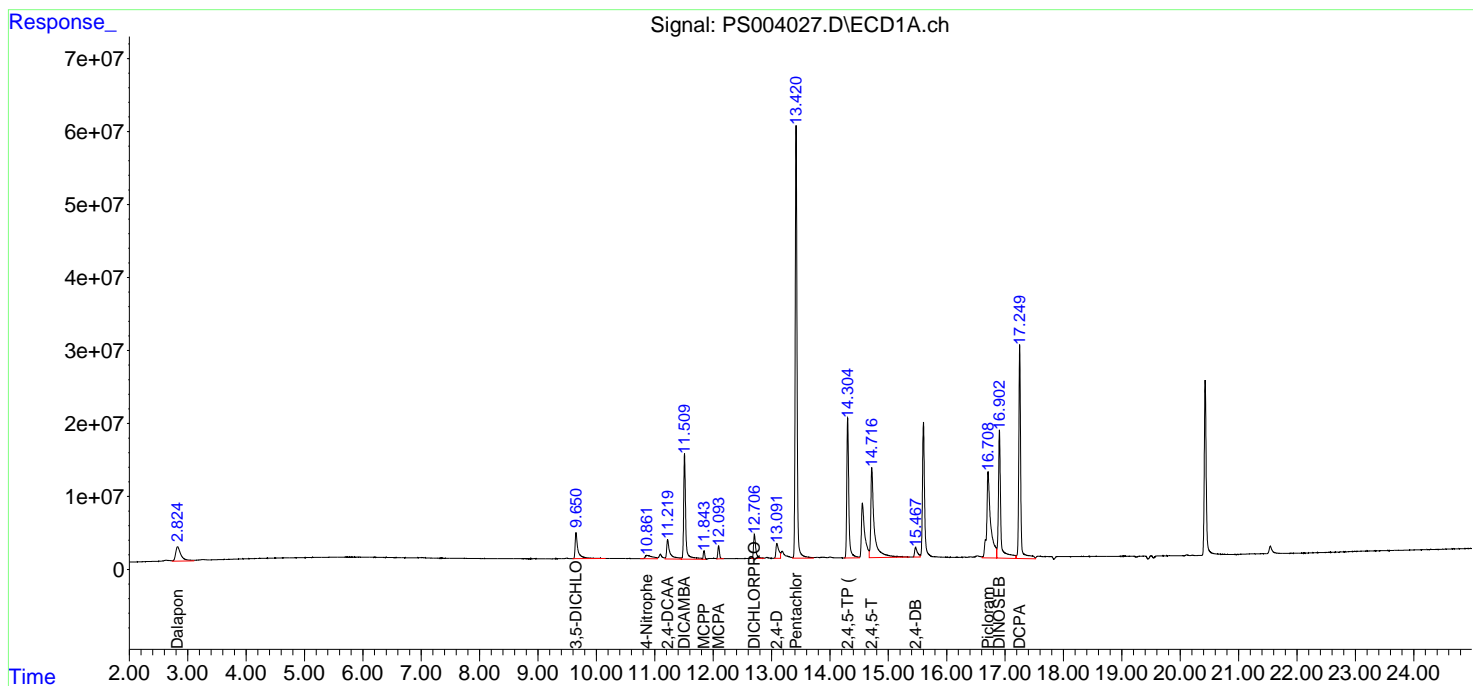
(f)=RT Delta > 1/2 Window (#)=Amounts differ by > 25% (m)=manual int.

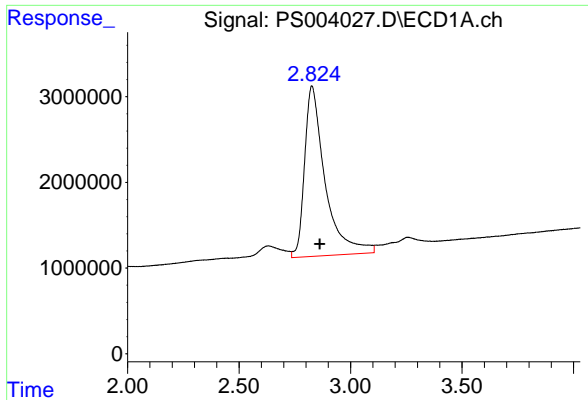
Data Path : Z:\pestpcbsrv\HPCHEM1\ECD_S\Data\PS041119\
 Data File : PS004027.D
 Signal(s) : Signal #1: ECD1A.ch Signal #2: ECD2B.ch
 Acq On : 11 Apr 2019 11:44
 Operator : EI\SJ
 Sample : HSTDICC200
 Misc :
 ALS Vial : 3 Sample Multiplier: 1

Instrument :
 ECD_S
 ClientSampled :

Integration File signal 1: autoint1.e
 Integration File signal 2: autoint2.e
 Quant Time: Apr 11 14:05:22 2019
 Quant Method : Z:\pestpcbsrv\HPCHEM1\ECD_S\Method\PS041119.M
 Quant Title : 8080.M
 QLast Update : Thu Apr 11 14:05:00 2019
 Response via : Initial Calibration
 Integrator: ChemStation

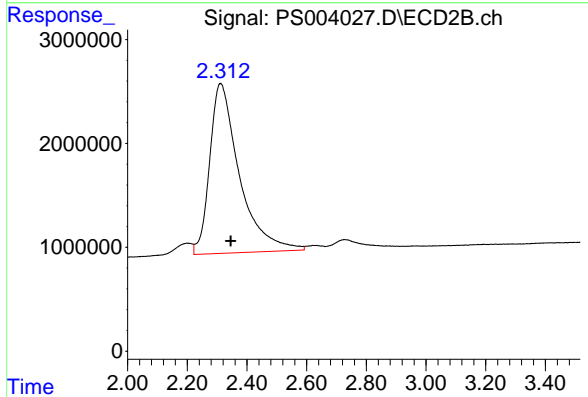
Volume Inj. : 2 µl
 Signal #1 Phase : Rtx-CLPesticides Signal #2 Phase: Rtx-CLPesticides2
 Signal #1 Info : 30M x 0.32mm x0.5 Signal #2 Info : 30M x 0.32mm x 0.25µm



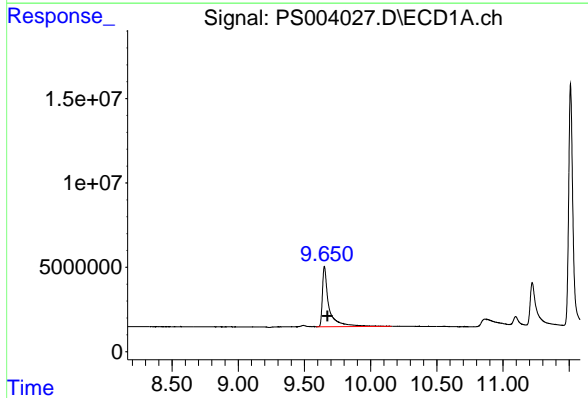


#1 Dalapon
 R.T.: 2.826 min
 Delta R.T.: -0.036 min
 Response: 127359048
 Conc: 185.96 ng/ml

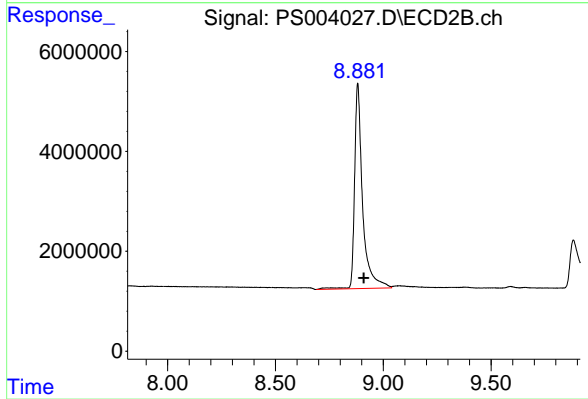
Instrument :
 ECD_S
 ClientSampleId :



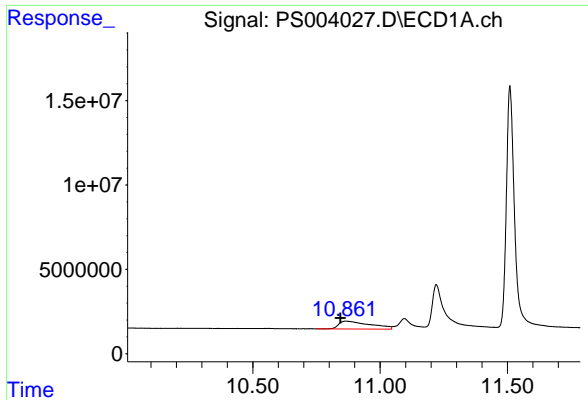
#1 Dalapon
 R.T.: 2.312 min
 Delta R.T.: -0.035 min
 Response: 113051907
 Conc: 177.78 ng/ml



#2 3,5-DICHLOROBENZOIC ACID
 R.T.: 9.650 min
 Delta R.T.: -0.022 min
 Response: 123461594
 Conc: 165.94 ng/ml

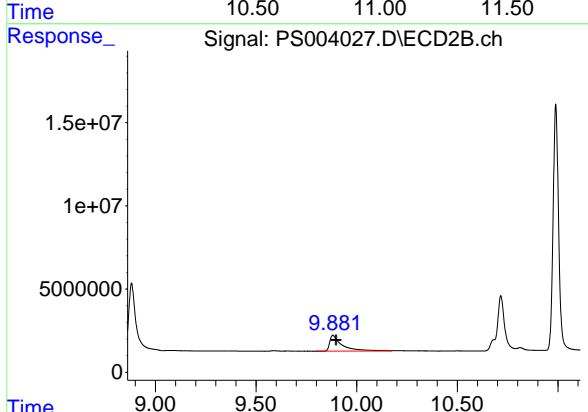


#2 3,5-DICHLOROBENZOIC ACID
 R.T.: 8.881 min
 Delta R.T.: -0.028 min
 Response: 106594101
 Conc: 188.64 ng/ml

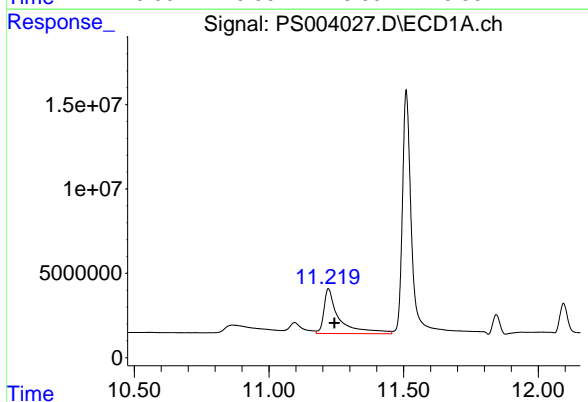


#3 4-Nitrophenol
 R.T.: 10.864 min
 Delta R.T.: 0.021 min
 Response: 40269871
 Conc: 154.38 ng/ml

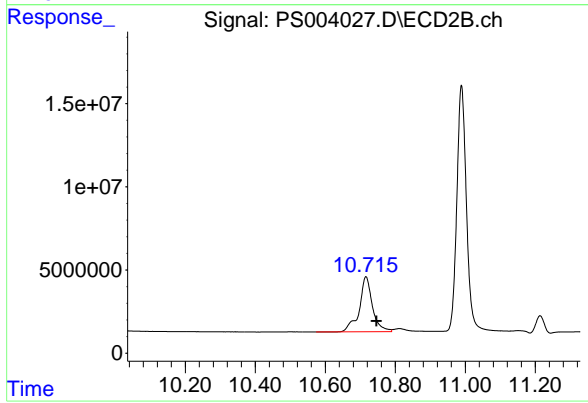
Instrument :
 ECD_S
 ClientSampled :



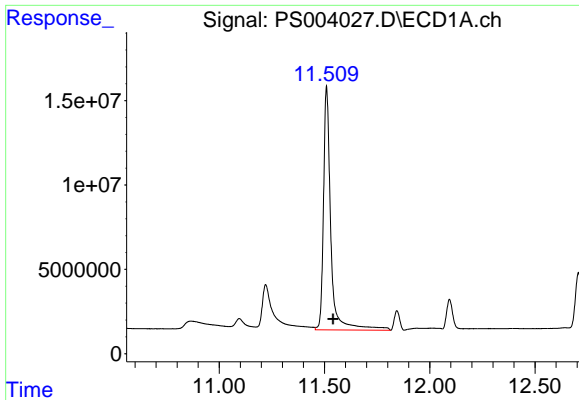
#3 4-Nitrophenol
 R.T.: 9.882 min
 Delta R.T.: -0.017 min
 Response: 40733643
 Conc: 162.18 ng/ml



#4 2,4-DCAA
 R.T.: 11.220 min
 Delta R.T.: -0.023 min
 Response: 104927559
 Conc: 219.81 ng/ml



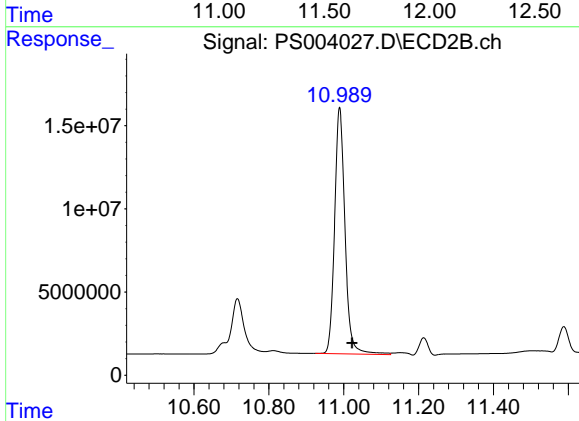
#4 2,4-DCAA
 R.T.: 10.716 min
 Delta R.T.: -0.030 min
 Response: 86126779
 Conc: 184.28 ng/ml



#5 DICAMBA

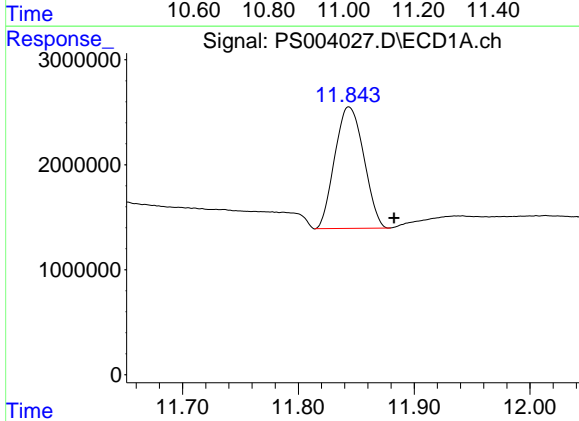
R.T.: 11.510 min
 Delta R.T.: -0.032 min
 Response: 350677718
 Conc: 176.32 ng/ml

Instrument :
 ECD_S
 ClientSampled :



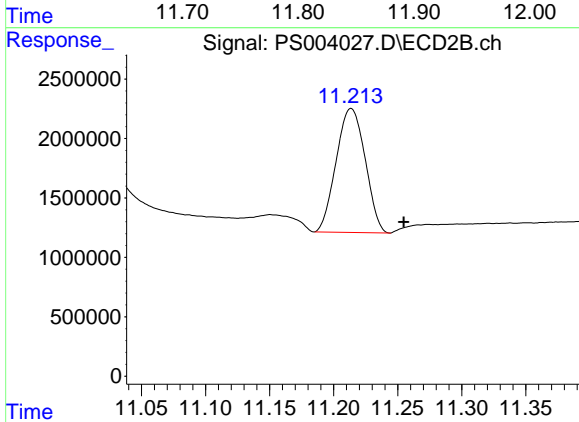
#5 DICAMBA

R.T.: 10.989 min
 Delta R.T.: -0.034 min
 Response: 285754915
 Conc: 169.30 ng/ml



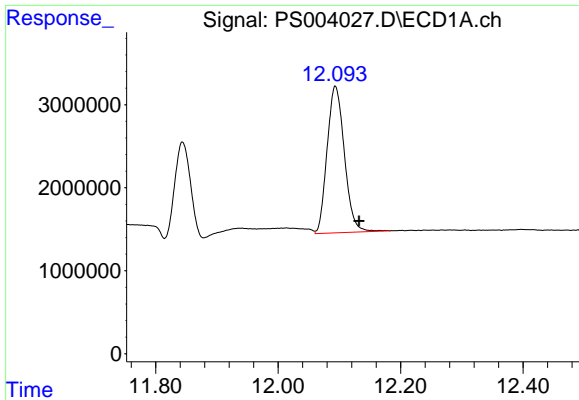
#6 MCP

R.T.: 11.844 min
 Delta R.T.: -0.039 min
 Response: 20179684
 Conc: 14.94 ug/ml



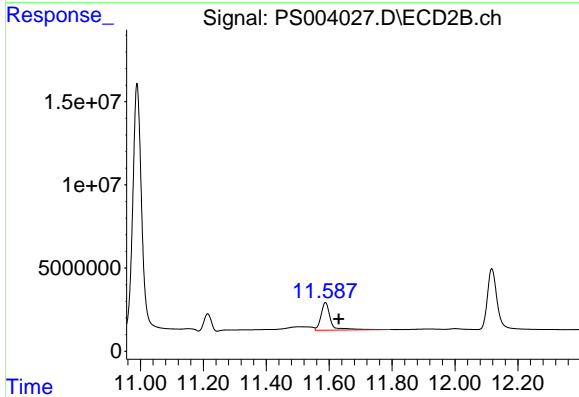
#6 MCP

R.T.: 11.214 min
 Delta R.T.: -0.041 min
 Response: 16405233
 Conc: 15.14 ug/ml

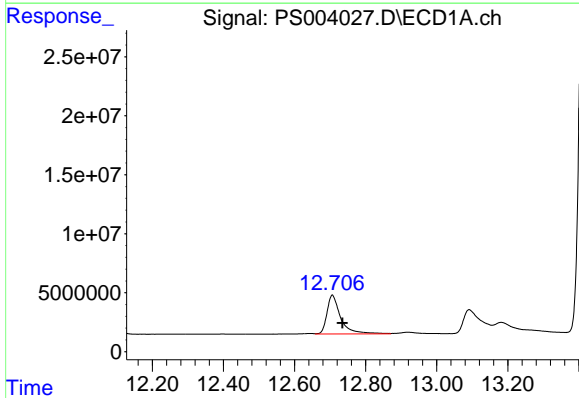


#7 MCPA
R.T.: 12.094 min
Delta R.T.: -0.038 min
Response: 34651289
Conc: 16.58 ug/ml

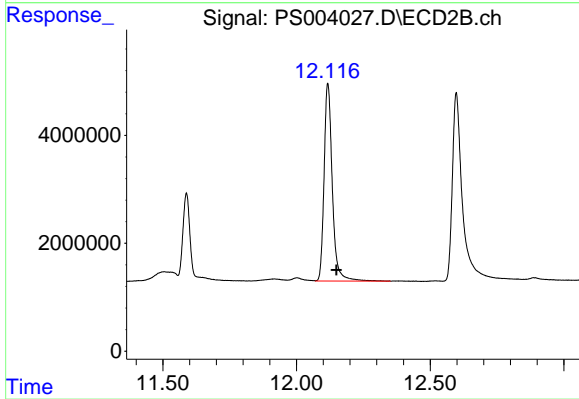
Instrument :
ECD_S
ClientSampled :



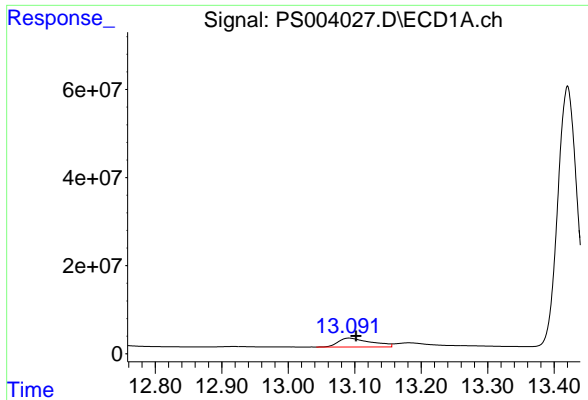
#7 MCPA
R.T.: 11.588 min
Delta R.T.: -0.042 min
Response: 35288959
Conc: 19.80 ug/ml



#8 DICHLORPROP
R.T.: 12.706 min
Delta R.T.: -0.028 min
Response: 87474845
Conc: 177.87 ng/ml

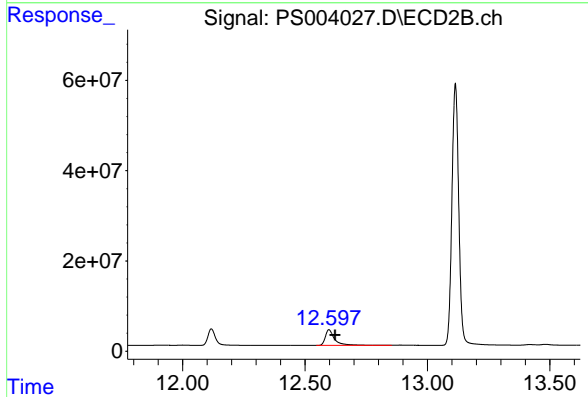


#8 DICHLORPROP
R.T.: 12.117 min
Delta R.T.: -0.032 min
Response: 78211574
Conc: 182.10 ng/ml

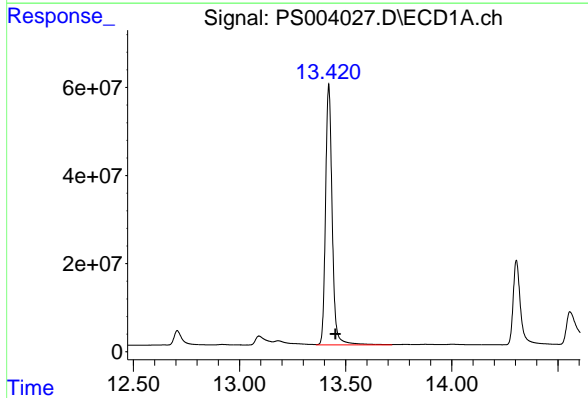


#9 2,4-D
 R.T.: 13.091 min
 Delta R.T.: -0.011 min
 Response: 69660563
 Conc: 147.47 ng/ml

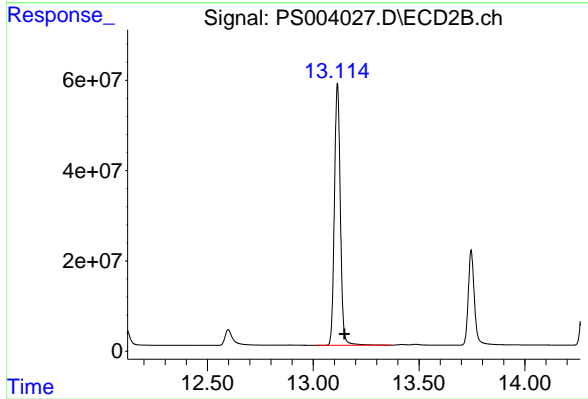
Instrument :
 ECD_S
 ClientSampleId :



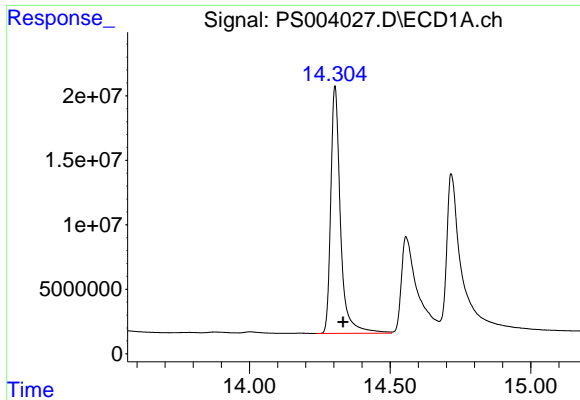
#9 2,4-D
 R.T.: 12.597 min
 Delta R.T.: -0.025 min
 Response: 93569904
 Conc: 180.62 ng/ml



#10 Pentachlorophenol
 R.T.: 13.420 min
 Delta R.T.: -0.032 min
 Response: 1287578576
 Conc: 172.11 ng/ml

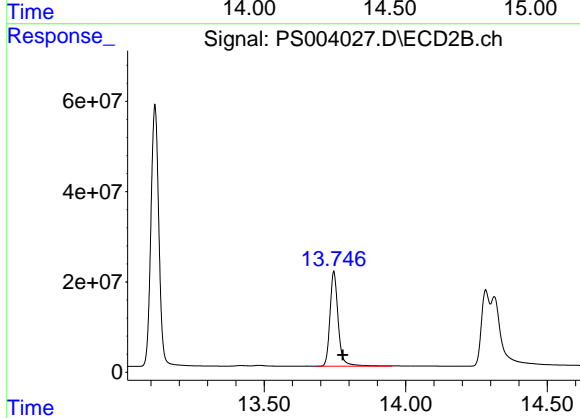


#10 Pentachlorophenol
 R.T.: 13.114 min
 Delta R.T.: -0.033 min
 Response: 1131663383
 Conc: 176.49 ng/ml

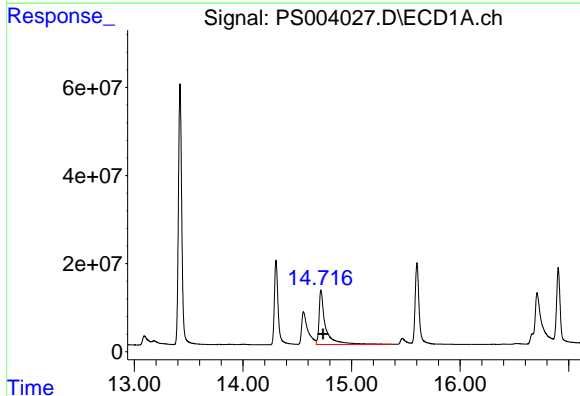


#11 2,4,5-TP (SILVEX)
 R.T.: 14.304 min
 Delta R.T.: -0.029 min
 Response: 461792472
 Conc: 165.46 ng/ml

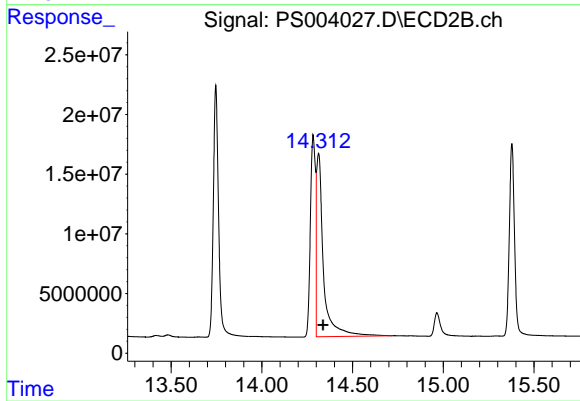
Instrument :
 ECD_S
 ClientSampleId :



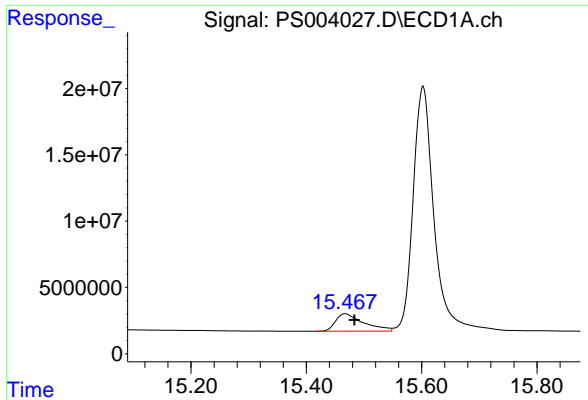
#11 2,4,5-TP (SILVEX)
 R.T.: 13.746 min
 Delta R.T.: -0.031 min
 Response: 423864963
 Conc: 171.28 ng/ml



#12 2,4,5-T
 R.T.: 14.717 min
 Delta R.T.: -0.020 min
 Response: 508214867
 Conc: 167.28 ng/ml

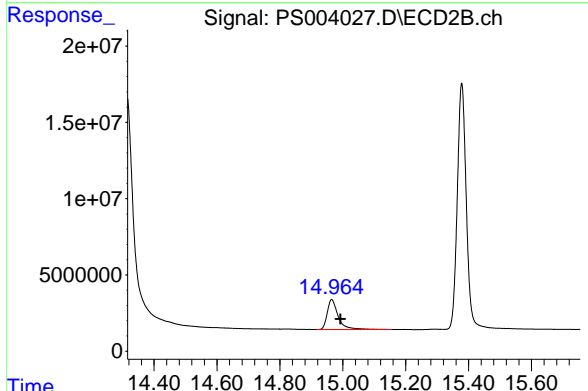


#12 2,4,5-T
 R.T.: 14.313 min
 Delta R.T.: -0.025 min
 Response: 416630465
 Conc: 173.49 ng/ml

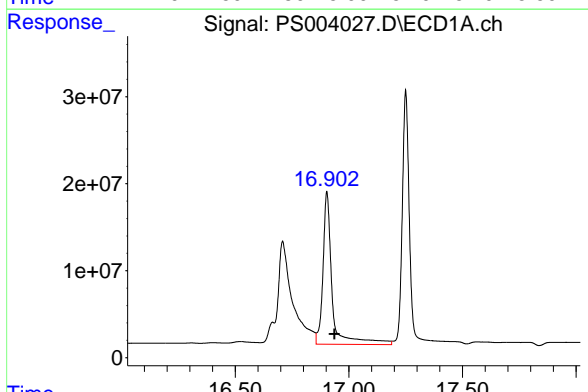


#13 2,4-DB
 R.T.: 15.467 min
 Delta R.T.: -0.016 min
 Response: 44362242
 Conc: 131.18 ng/ml

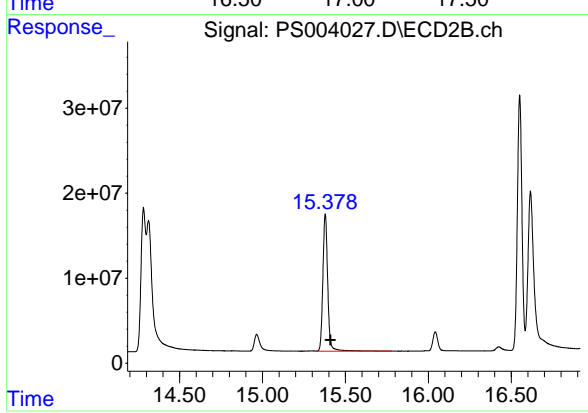
Instrument :
 ECD_S
 ClientSampled :



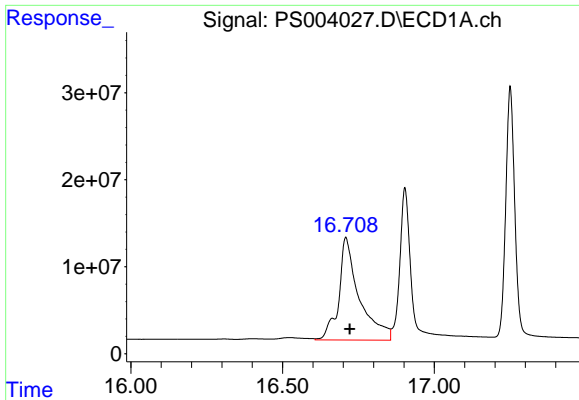
#13 2,4-DB
 R.T.: 14.965 min
 Delta R.T.: -0.028 min
 Response: 47671833
 Conc: 146.26 ng/ml



#14 DINOSEB
 R.T.: 16.903 min
 Delta R.T.: -0.033 min
 Response: 494955586
 Conc: 198.51 ng/ml

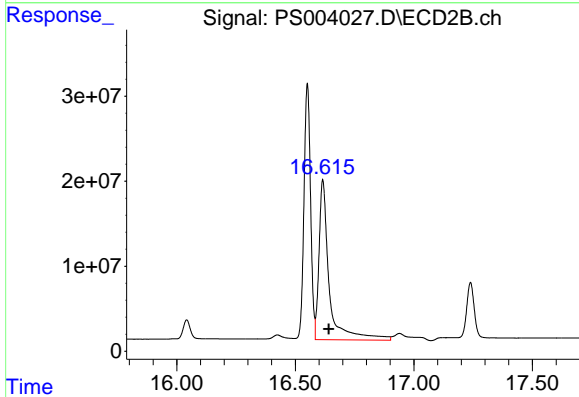


#14 DINOSEB
 R.T.: 15.378 min
 Delta R.T.: -0.033 min
 Response: 328869695
 Conc: 170.78 ng/ml

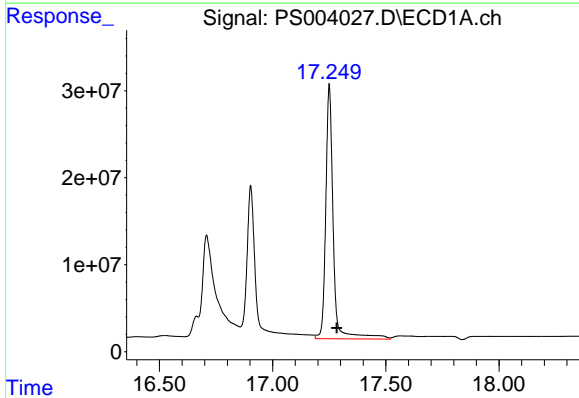


#15 Picloram
 R.T.: 16.708 min
 Delta R.T.: -0.013 min
 Response: 553849542
 Conc: 148.75 ng/ml

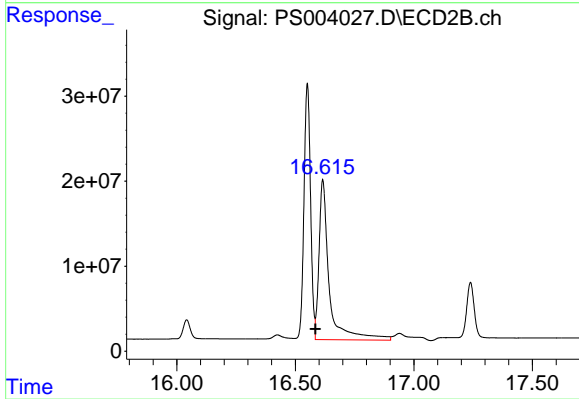
Instrument :
 ECD_S
 ClientSampleId :



#15 Picloram
 R.T.: 16.616 min
 Delta R.T.: -0.026 min
 Response: 565231185
 Conc: 159.88 ng/ml



#16 DCPA
 R.T.: 17.250 min
 Delta R.T.: -0.034 min
 Response: 672301159
 Conc: 184.99 ng/ml



#16 DCPA
 R.T.: 16.616 min
 Delta R.T.: 0.031 min
 Response: 565231185
 Conc: 172.64 ng/ml