

Data Path : Z:\pestpcbsrv\HPCHEM1\ECD\_S\Data\PS041119\  
 Data File : PS004064.D  
 Signal(s) : Signal #1: ECD1A.ch Signal #2: ECD2B.ch  
 Acq On : 12 Apr 2019 06:57  
 Operator : EI\SJ  
 Sample : PB118792BL  
 Misc :  
 ALS Vial : 24 Sample Multiplier: 1

Instrument :  
 ECD\_S  
 ClientSampleId :  
 PB118792BL

Integration File signal 1: autoint1.e  
 Integration File signal 2: autoint2.e  
 Quant Time: Apr 12 07:43:22 2019  
 Quant Method : Z:\pestpcbsrv\HPCHEM1\ECD\_S\Method\PS041119.M  
 Quant Title : 8080.M  
 QLast Update : Thu Apr 11 14:18:42 2019  
 Response via : Initial Calibration  
 Integrator: ChemStation

Volume Inj. : 2 µl  
 Signal #1 Phase : Rtx-CLPesticides Signal #2 Phase: Rtx-CLPesticides2  
 Signal #1 Info : 30M x 0.32mm x0.5 Signal #2 Info : 30M x 0.32mm x 0.25µm

	Compound	RT#1	RT#2	Resp#1	Resp#2	ng/ml	ng/ml
-----							
System Monitoring Compounds							
4) S	2,4-DCAA	11.193	10.711	481.9E6	445.2E6	993.145	969.464
Target Compounds							
1) T	Dalapon	0.000	2.283	0	9128382	N.D.	14.525
2) T	3,5-DICHL...	0.000	8.883	0	993999	N.D.	1.739
3) T	4-Nitroph...	10.842	9.890	11872759	13871417	47.003	57.844
5) T	DICAMBA	11.547	10.953	4738852	32791466	2.416	19.916 #
6) T	MCP	11.872	11.195	7829939	11338827	5.998	10.871 #
7) T	MCPA	12.149	11.565	11762990	29486252	5.701	16.206 #
10) T	Pentachlo...	13.410	13.115	4391549	1550843	<MDL	<MDL #
11) T	2,4,5-TP ...	14.310	13.748	7875442	9317564	2.909	3.869 #
12) T	2,4,5-T	14.788	14.305	12688132	7373827	4.309	3.197 #
13) T	2,4-DB	15.481	14.970	65988836	94407400	211.897	306.432 #
14) T	DINOSEB	0.000	15.437	0	45623500	N.D.	24.411
15) T	Picloram	16.679	16.653	37942451	32216970	10.580	9.411
16) T	DCPA	0.000	16.653	0	32216970	N.D.	10.136

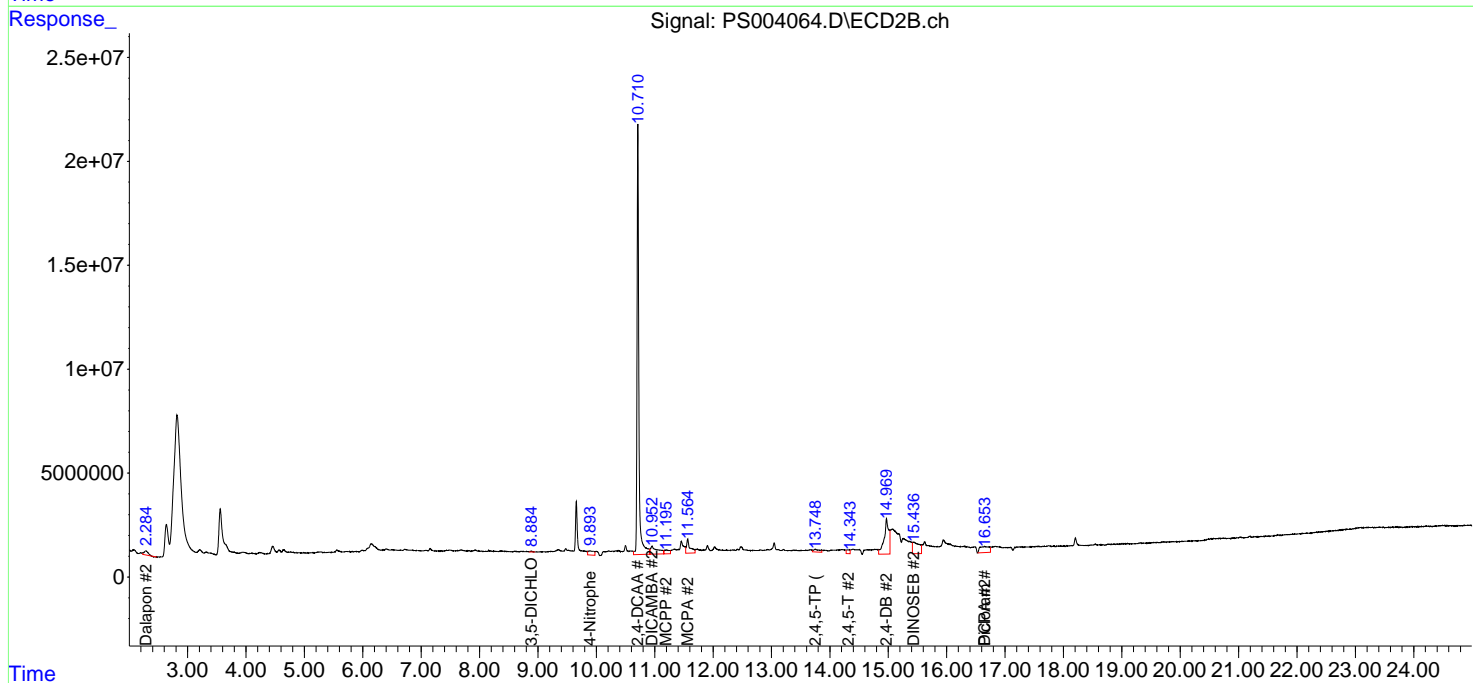
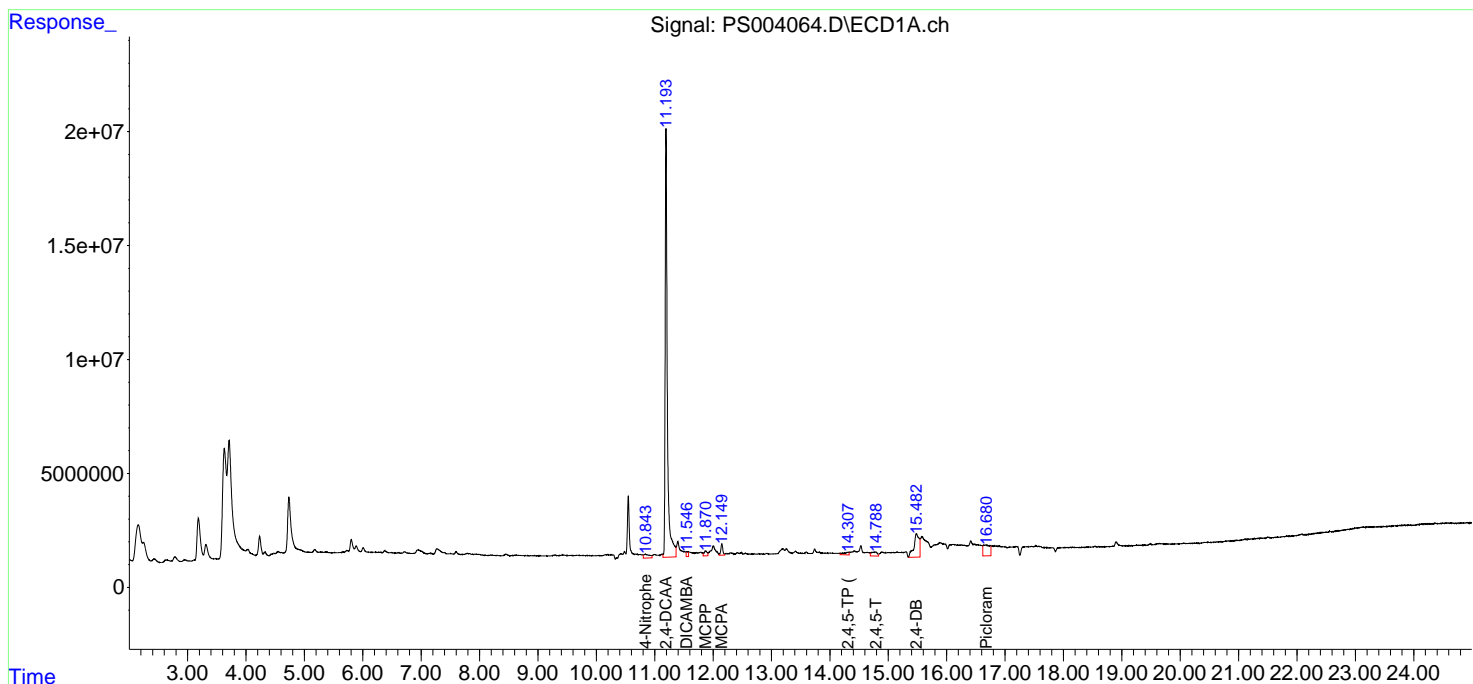
(f)=RT Delta > 1/2 Window (#)=Amounts differ by > 25% (m)=manual int.

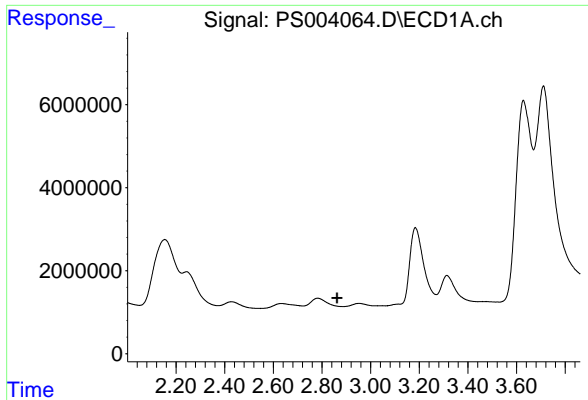
Data Path : Z:\pestpcbsrv\HPCHEM1\ECD\_S\Data\PS041119\  
 Data File : PS004064.D  
 Signal(s) : Signal #1: ECD1A.ch Signal #2: ECD2B.ch  
 Acq On : 12 Apr 2019 06:57  
 Operator : EI\SJ  
 Sample : PB118792BL  
 Misc :  
 ALS Vial : 24 Sample Multiplier: 1

Instrument :  
 ECD\_S  
 ClientSampled :  
 PB118792BL

Integration File signal 1: autoint1.e  
 Integration File signal 2: autoint2.e  
 Quant Time: Apr 12 07:43:22 2019  
 Quant Method : Z:\pestpcbsrv\HPCHEM1\ECD\_S\Method\PS041119.M  
 Quant Title : 8080.M  
 QLast Update : Thu Apr 11 14:18:42 2019  
 Response via : Initial Calibration  
 Integrator: ChemStation

Volume Inj. : 2 µl  
 Signal #1 Phase : Rtx-CLPesticides Signal #2 Phase: Rtx-CLPesticides2  
 Signal #1 Info : 30M x 0.32mm x0.5 Signal #2 Info : 30M x 0.32mm x 0.25µm

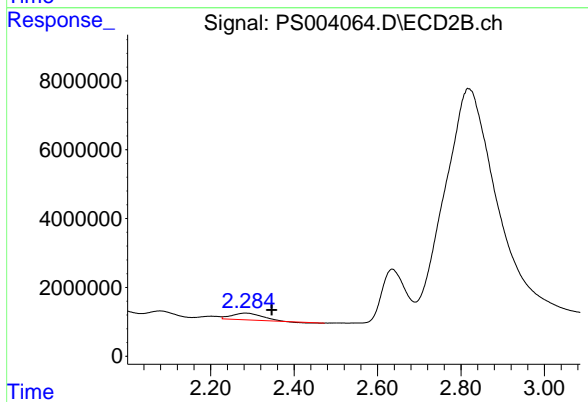




#1 Dalapon

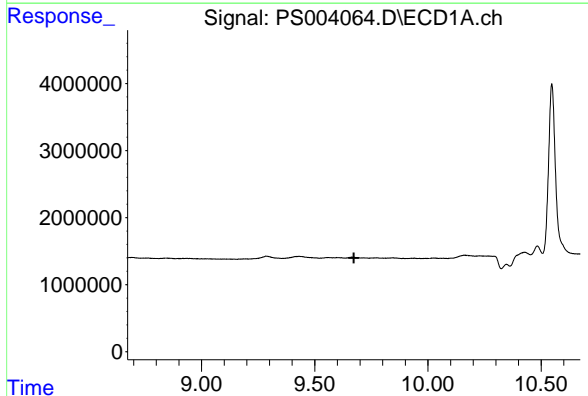
R.T.: 0.000 min  
 Exp R.T. : 2.862 min  
 Response: 0  
 Conc: N.D.

Instrument :  
 ECD\_S  
 ClientSampleId :  
 PB118792BL



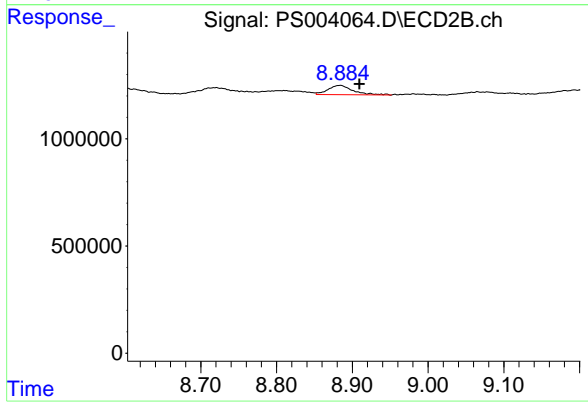
#1 Dalapon

R.T.: 2.283 min  
 Delta R.T.: -0.063 min  
 Response: 9128382  
 Conc: 14.53 ng/ml



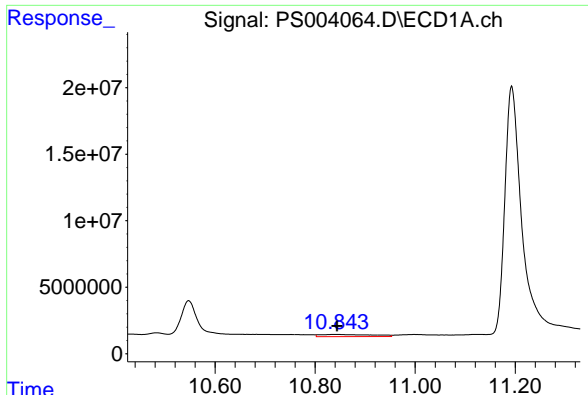
#2 3,5-DICHLOROBENZOIC ACID

R.T.: 0.000 min  
 Exp R.T. : 9.673 min  
 Response: 0  
 Conc: N.D.



#2 3,5-DICHLOROBENZOIC ACID

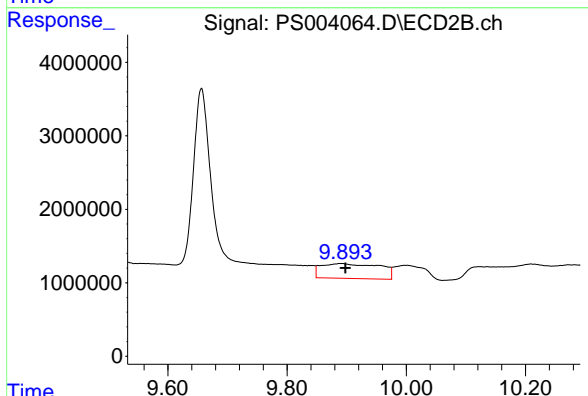
R.T.: 8.883 min  
 Delta R.T.: -0.026 min  
 Response: 993999  
 Conc: 1.74 ng/ml



#3 4-Nitrophenol

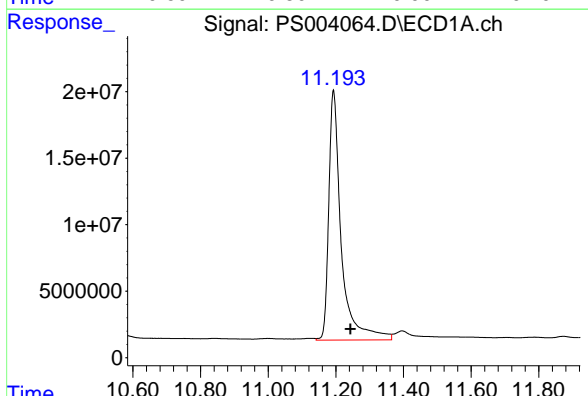
R.T.: 10.842 min  
Delta R.T.: -0.002 min  
Response: 11872759  
Conc: 47.00 ng/ml

Instrument :  
ECD\_S  
ClientSampleId :  
PB118792BL



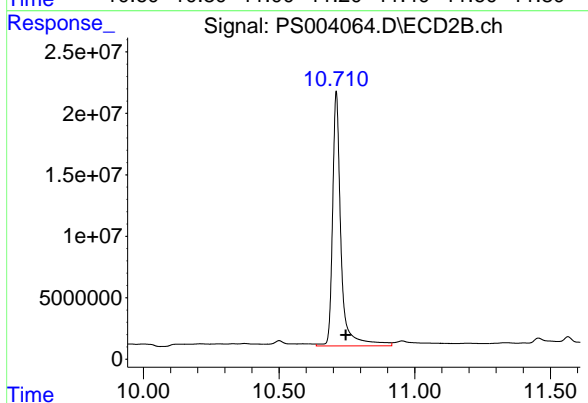
#3 4-Nitrophenol

R.T.: 9.890 min  
Delta R.T.: -0.008 min  
Response: 13871417  
Conc: 57.84 ng/ml



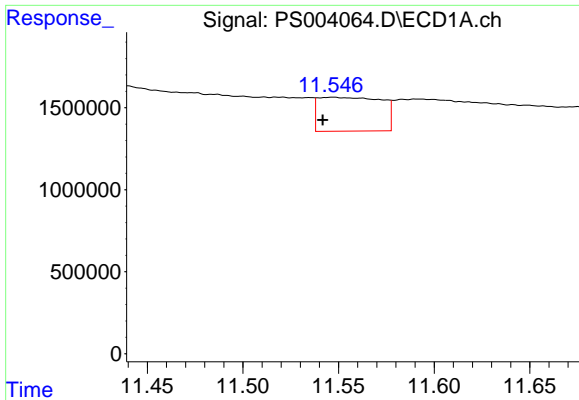
#4 2,4-DCAA

R.T.: 11.193 min  
Delta R.T.: -0.050 min  
Response: 481888401  
Conc: 993.14 ng/ml



#4 2,4-DCAA

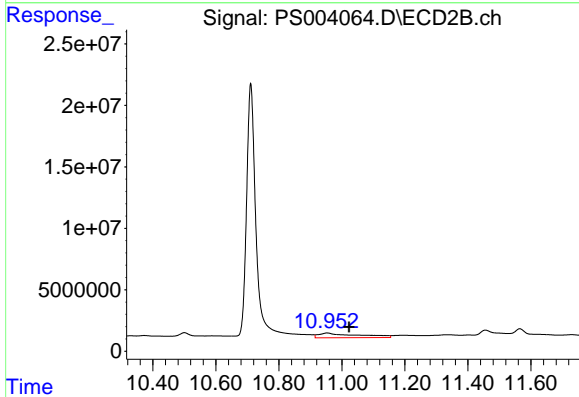
R.T.: 10.711 min  
Delta R.T.: -0.035 min  
Response: 445218746  
Conc: 969.46 ng/ml



#5 DICAMBA

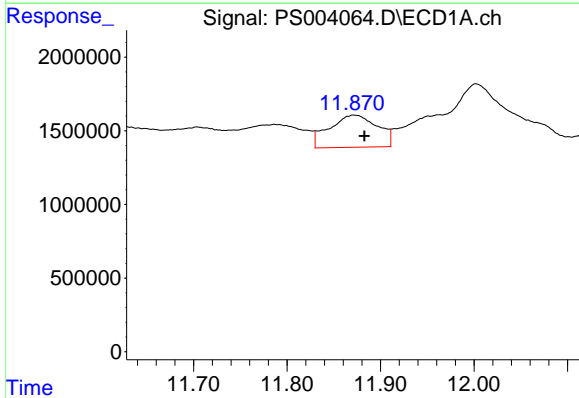
R.T.: 11.547 min  
 Delta R.T.: 0.005 min  
 Response: 4738852  
 Conc: 2.42 ng/ml

Instrument :  
 ECD\_S  
 ClientSampleId :  
 PB118792BL



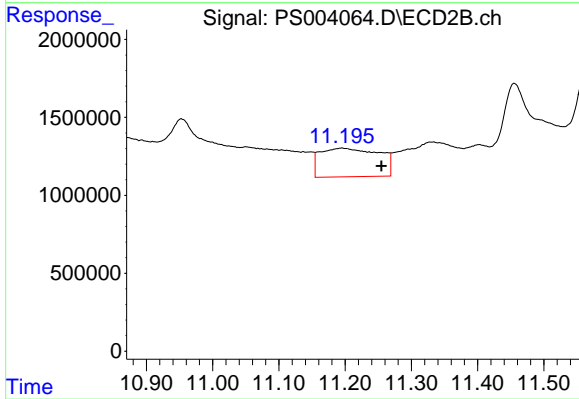
#5 DICAMBA

R.T.: 10.953 min  
 Delta R.T.: -0.070 min  
 Response: 32791466  
 Conc: 19.92 ng/ml



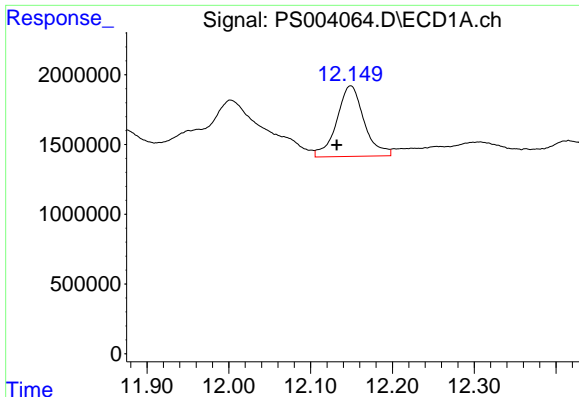
#6 MCP

R.T.: 11.872 min  
 Delta R.T.: -0.010 min  
 Response: 7829939  
 Conc: 6.00 ug/ml



#6 MCP

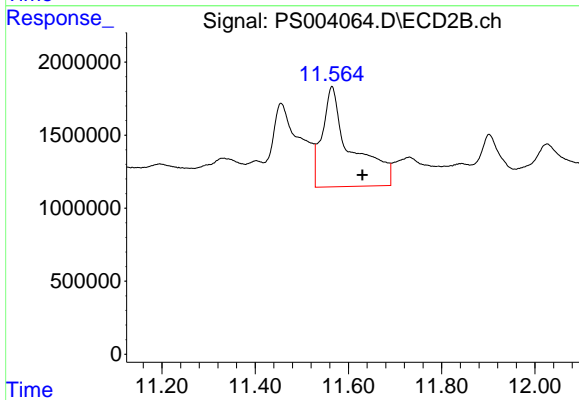
R.T.: 11.195 min  
 Delta R.T.: -0.059 min  
 Response: 11338827  
 Conc: 10.87 ug/ml



#7 MCPA

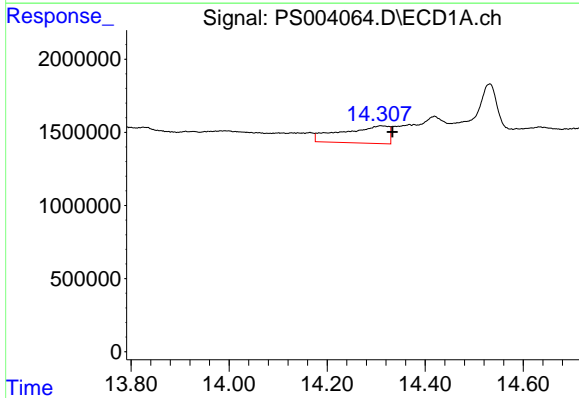
R.T.: 12.149 min  
 Delta R.T.: 0.017 min  
 Response: 11762990  
 Conc: 5.70 ug/ml

Instrument :  
 ECD\_S  
 ClientSampleId :  
 PB118792BL



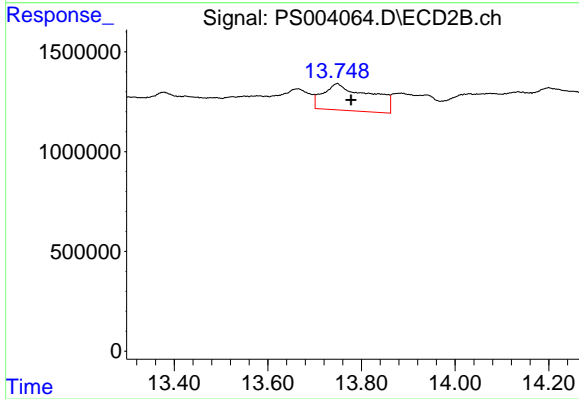
#7 MCPA

R.T.: 11.565 min  
 Delta R.T.: -0.065 min  
 Response: 29486252  
 Conc: 16.21 ug/ml



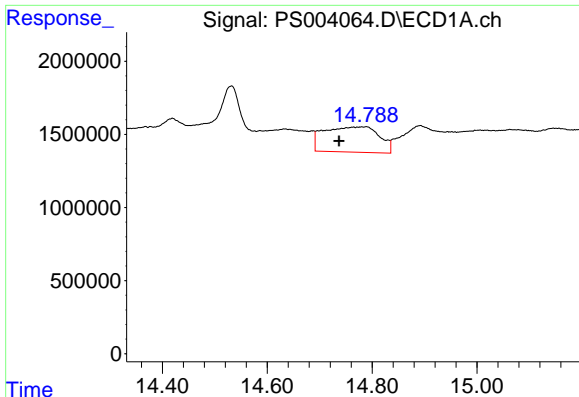
#11 2,4,5-TP (SILVEX)

R.T.: 14.310 min  
 Delta R.T.: -0.024 min  
 Response: 7875442  
 Conc: 2.91 ng/ml



#11 2,4,5-TP (SILVEX)

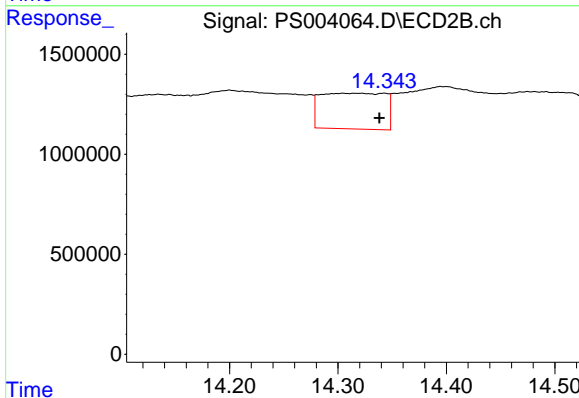
R.T.: 13.748 min  
 Delta R.T.: -0.030 min  
 Response: 9317564  
 Conc: 3.87 ng/ml



#12 2,4,5-T

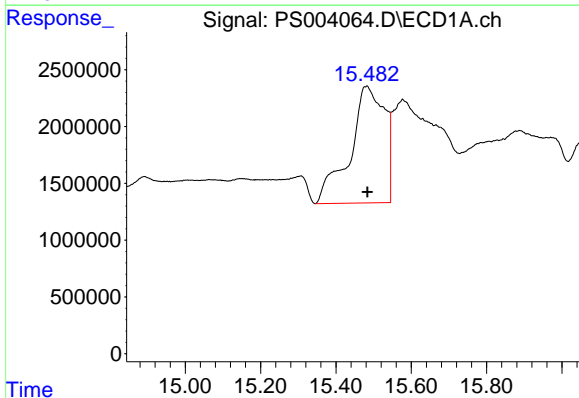
R.T.: 14.788 min  
 Delta R.T.: 0.051 min  
 Response: 12688132  
 Conc: 4.31 ng/ml

Instrument :  
 ECD\_S  
 ClientSampled :  
 PB118792BL



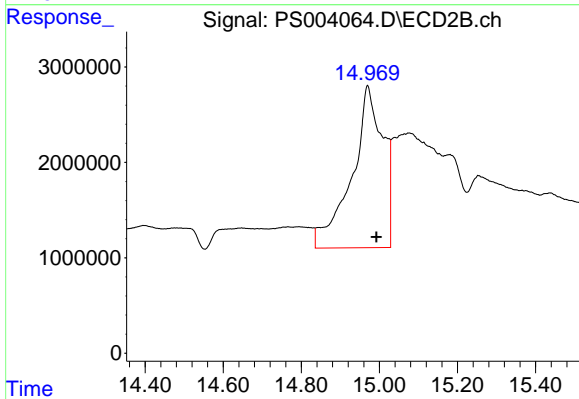
#12 2,4,5-T

R.T.: 14.305 min  
 Delta R.T.: -0.033 min  
 Response: 7373827  
 Conc: 3.20 ng/ml



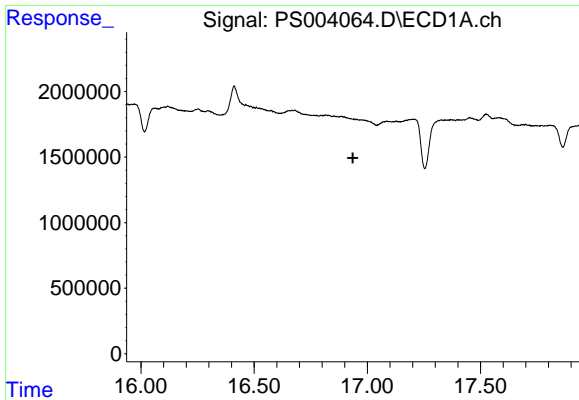
#13 2,4-DB

R.T.: 15.481 min  
 Delta R.T.: -0.002 min  
 Response: 65988836  
 Conc: 211.90 ng/ml



#13 2,4-DB

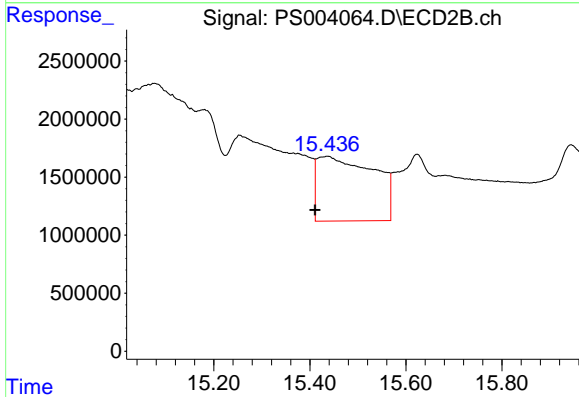
R.T.: 14.970 min  
 Delta R.T.: -0.023 min  
 Response: 94407400  
 Conc: 306.43 ng/ml



#14 DINOSEB

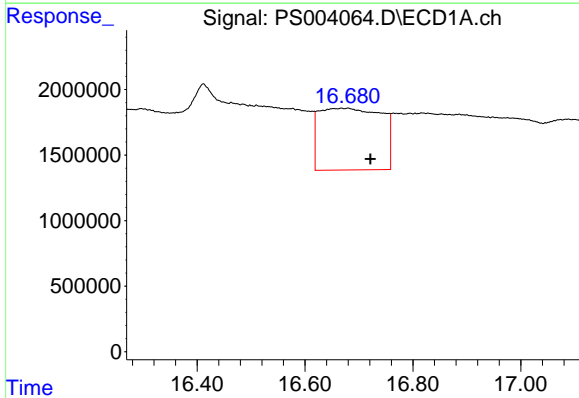
R.T.: 0.000 min  
 Exp R.T.: 16.936 min  
 Response: 0  
 Conc: N.D.

Instrument :  
 ECD\_S  
 ClientSampleId :  
 PB118792BL



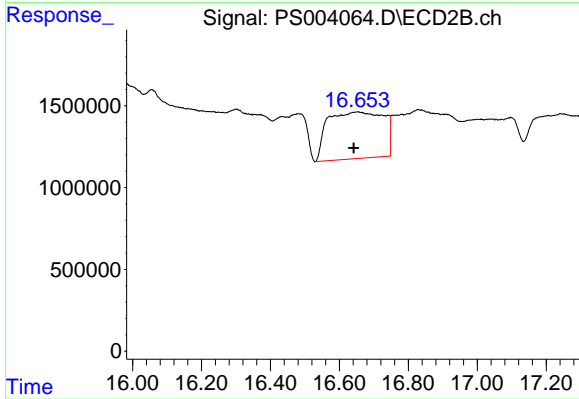
#14 DINOSEB

R.T.: 15.437 min  
 Delta R.T.: 0.026 min  
 Response: 45623500  
 Conc: 24.41 ng/ml



#15 Picloram

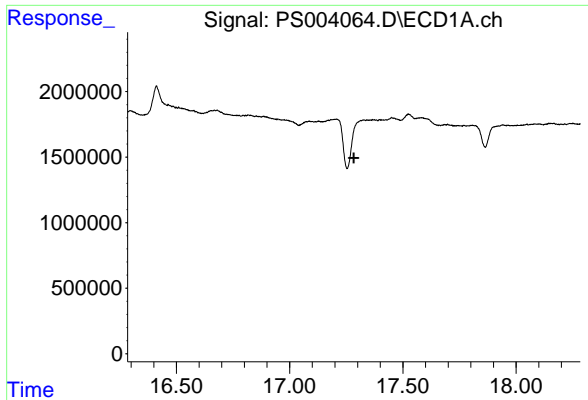
R.T.: 16.679 min  
 Delta R.T.: -0.042 min  
 Response: 37942451  
 Conc: 10.58 ng/ml



#15 Picloram

R.T.: 16.653 min  
 Delta R.T.: 0.010 min  
 Response: 32216970  
 Conc: 9.41 ng/ml

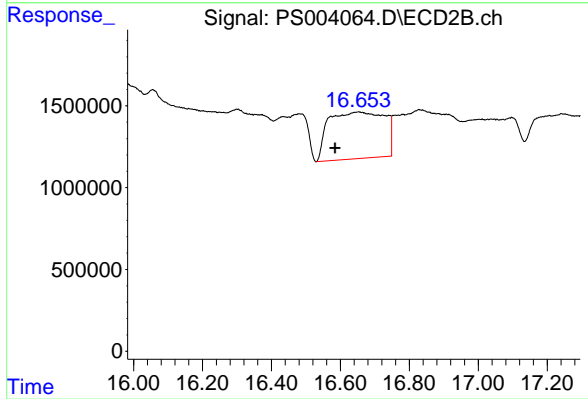




#16 DCPA

R.T.: 0.000 min  
Exp R.T.: 17.284 min  
Response: 0  
Conc: N.D.

Instrument :  
ECD\_S  
ClientSampled :  
PB118792BL



#16 DCPA

R.T.: 16.653 min  
Delta R.T.: 0.068 min  
Response: 32216970  
Conc: 10.14 ng/ml