

Data Path : Z:\pestpcbsrv\HPCHEM1\ECD\_S\Data\PS041519\  
 Data File : PS004084.D  
 Signal(s) : Signal #1: ECD1A.ch Signal #2: ECD2B.ch  
 Acq On : 15 Apr 2019 07:36  
 Operator : EI\SJ  
 Sample : HEXANE  
 Misc :  
 ALS Vial : 1 Sample Multiplier: 1

Instrument :  
 ECD\_S  
 ClientSampleId :

Integration File signal 1: autoint1.e  
 Integration File signal 2: autoint2.e  
 Quant Time: Apr 16 03:10:34 2019  
 Quant Method : Z:\pestpcbsrv\HPCHEM1\ECD\_S\Method\PS041119.M  
 Quant Title : 8080.M  
 QLast Update : Thu Apr 11 14:18:42 2019  
 Response via : Initial Calibration  
 Integrator: ChemStation

Volume Inj. : 2 µl  
 Signal #1 Phase : Rtx-CLPesticides Signal #2 Phase: Rtx-CLPesticides2  
 Signal #1 Info : 30M x 0.32mm x0.5 Signal #2 Info : 30M x 0.32mm x 0.25µm

	Compound	RT#1	RT#2	Resp#1	Resp#2	ng/ml	ng/ml
-----							
System Monitoring Compounds							
4) S	2,4-DCAA	11.214	10.813	127.2E6	1918.5E6	262.063	4177.454 #
Target Compounds							
2) T	3,5-DICHL...	0.000	8.944	0	261002	N.D.	<MDL
3) T	4-Nitroph...	10.811	9.914	325.8E6	5288942	1289.970	22.055 #
5) T	DICAMBA	11.507	0.000	252.9E6	0	128.936	N.D. #
6) T	MCPD	11.874	11.283	641.8E6	1302579	491.648	1.249 #
7) T	MCPA	12.161	0.000	103.1E6	0	49.970	N.D. #
8) T	DICHLORPROP	12.714	12.149	156.0E6	515777	322.156	1.215 #
9) T	2,4-D	0.000	12.690	0	9153466	N.D.	17.888
10) T	Pentachlo...	13.459	13.113	219.3E6	1137767	30.239	<MDL #
11) T	2,4,5-TP ...	14.293	13.781	335.9E6	4713282	124.075	1.957 #
12) T	2,4,5-T	14.724	0.000	169.8E6	0	57.685	N.D. #
13) T	2,4-DB	0.000	15.044	0	11885514	N.D.	38.579
14) T	DINOSEB	0.000	15.387	0	1414114	N.D.	<MDL
15) T	Picloram	0.000	16.627	0	27158081	N.D.	7.933
16) T	DCPA	17.300	16.566	63790971	10267836	17.721	3.230 #
-----							

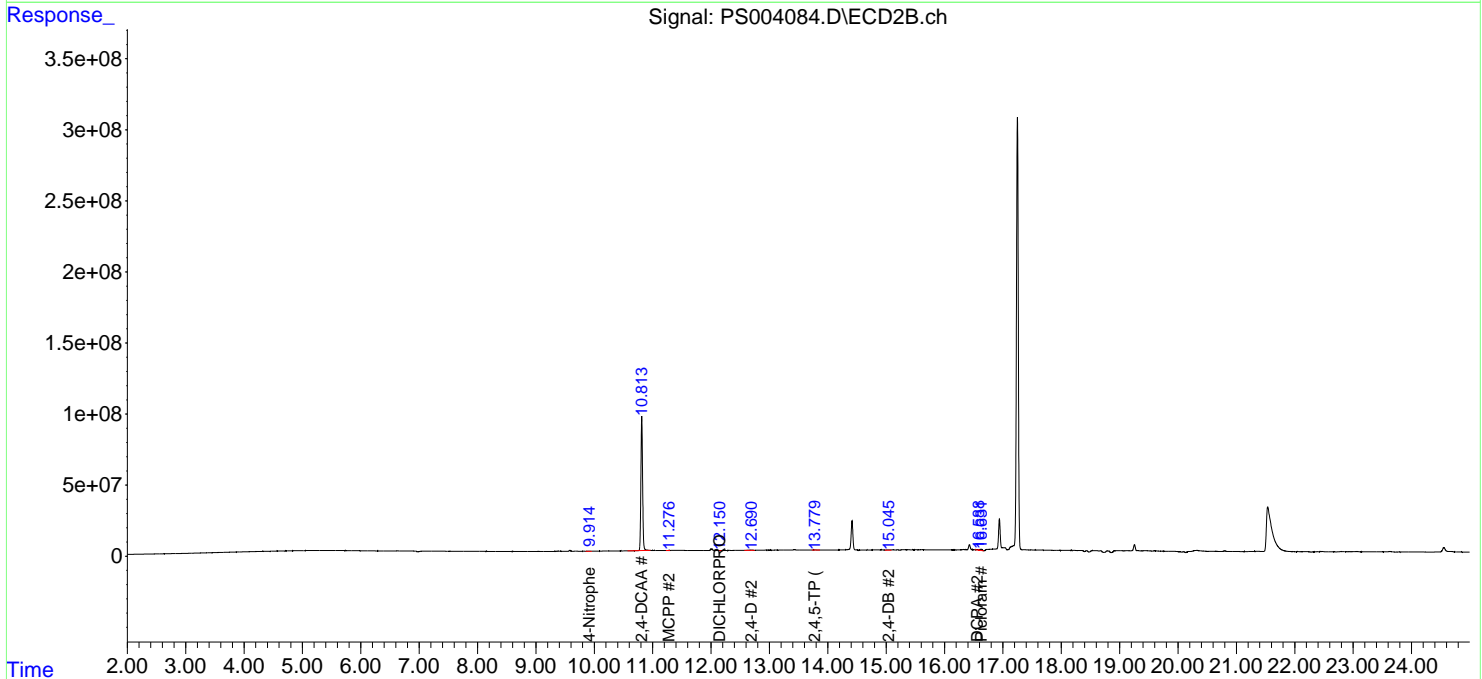
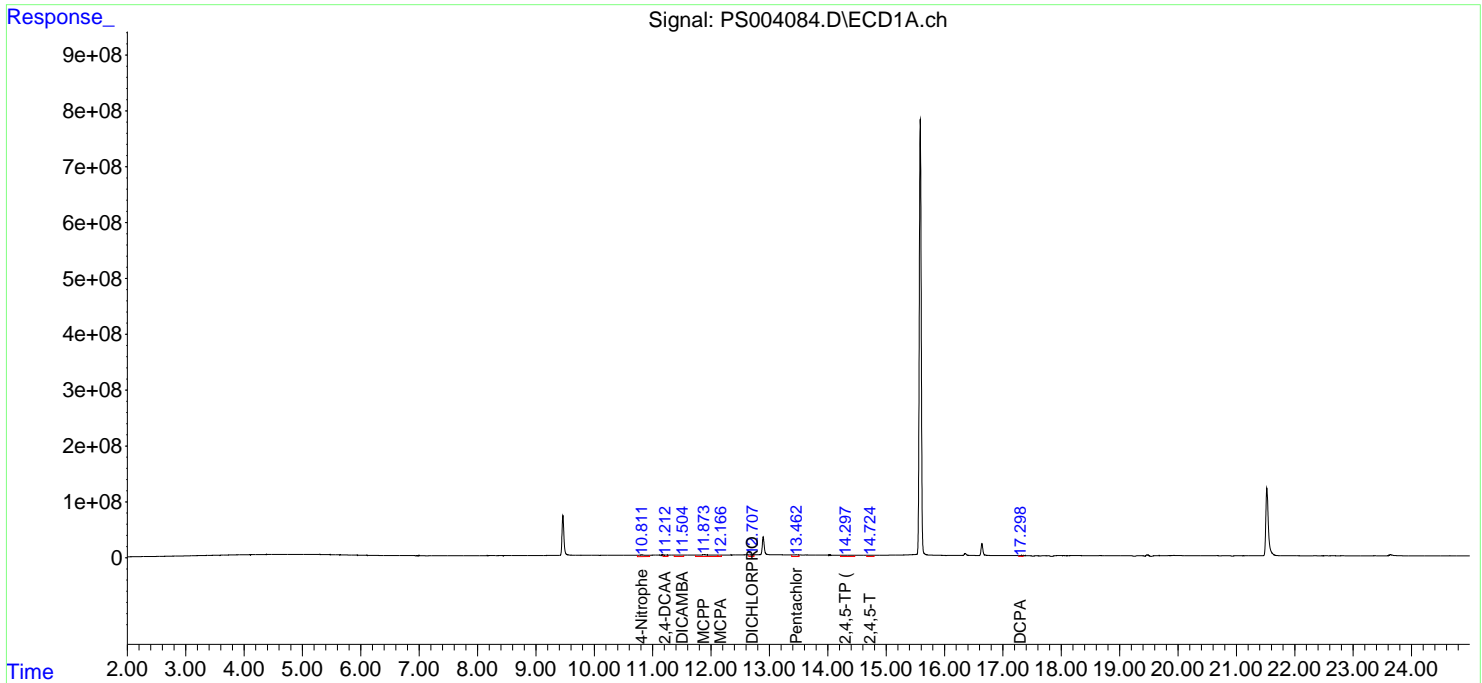
(f)=RT Delta > 1/2 Window (#)=Amounts differ by > 25% (m)=manual int.

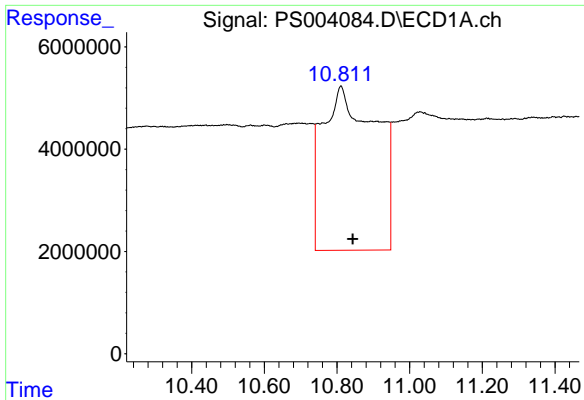
Data Path : Z:\pestpcbsrv\HPCHEM1\ECD\_S\Data\PS041519\  
 Data File : PS004084.D  
 Signal(s) : Signal #1: ECD1A.ch Signal #2: ECD2B.ch  
 Acq On : 15 Apr 2019 07:36  
 Operator : EI\SJ  
 Sample : HEXANE  
 Misc :  
 ALS Vial : 1 Sample Multiplier: 1

Instrument :  
 ECD\_S  
 ClientSampled :

Integration File signal 1: autoint1.e  
 Integration File signal 2: autoint2.e  
 Quant Time: Apr 16 03:10:34 2019  
 Quant Method : Z:\pestpcbsrv\HPCHEM1\ECD\_S\Method\PS041119.M  
 Quant Title : 8080.M  
 QLast Update : Thu Apr 11 14:18:42 2019  
 Response via : Initial Calibration  
 Integrator: ChemStation

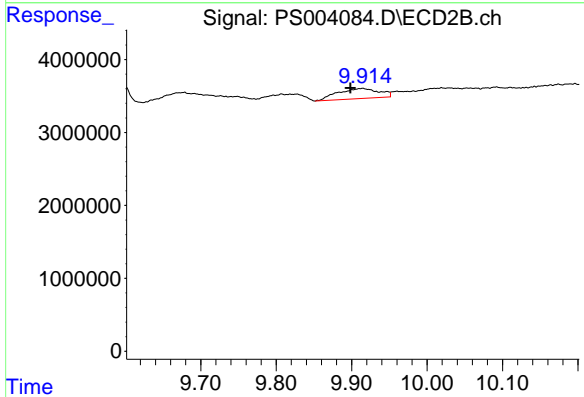
Volume Inj. : 2 µl  
 Signal #1 Phase : Rtx-CLPesticides Signal #2 Phase: Rtx-CLPesticides2  
 Signal #1 Info : 30M x 0.32mm x0.5 Signal #2 Info : 30M x 0.32mm x 0.25µm



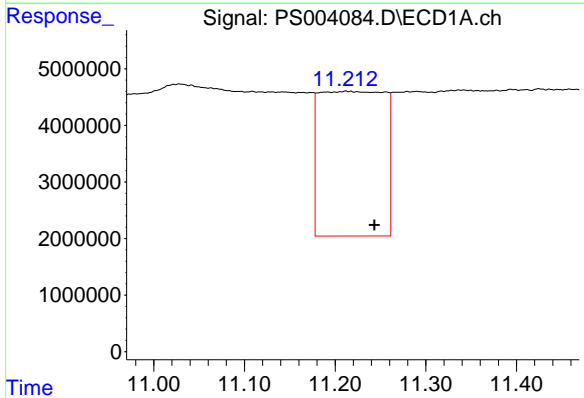


#3 4-Nitrophenol  
 R.T.: 10.811 min  
 Delta R.T.: -0.033 min  
 Response: 325841757  
 Conc: 1289.97 ng/ml

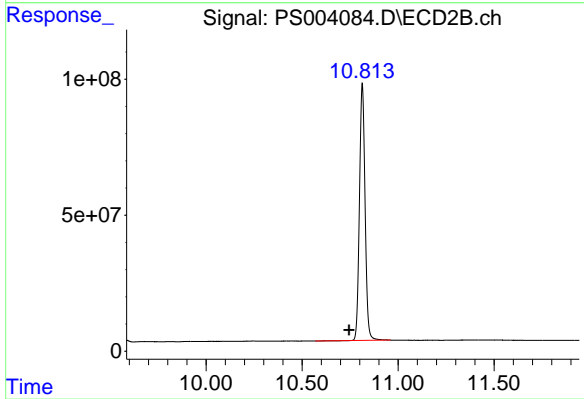
Instrument :  
 ECD\_S  
 ClientSampleId :



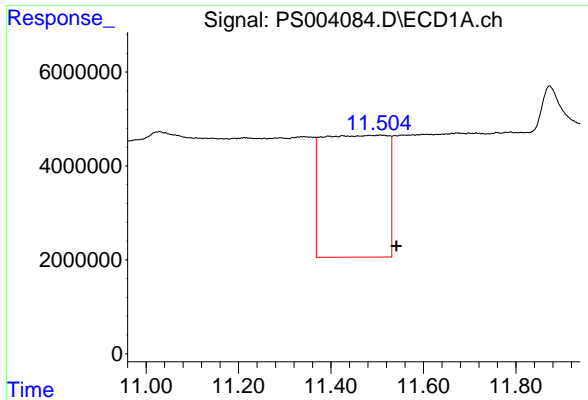
#3 4-Nitrophenol  
 R.T.: 9.914 min  
 Delta R.T.: 0.016 min  
 Response: 5288942  
 Conc: 22.05 ng/ml



#4 2,4-DCAA  
 R.T.: 11.214 min  
 Delta R.T.: -0.030 min  
 Response: 127156858  
 Conc: 262.06 ng/ml

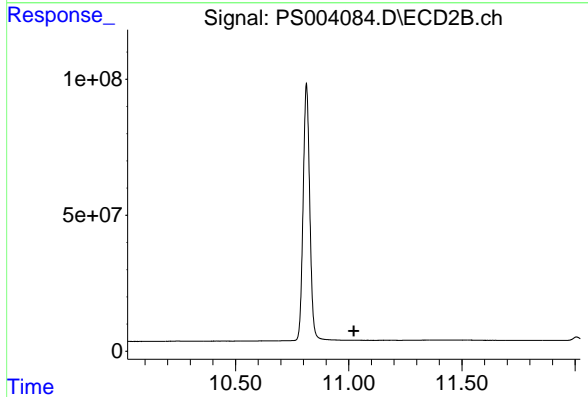


#4 2,4-DCAA  
 R.T.: 10.813 min  
 Delta R.T.: 0.068 min  
 Response: 1918462413  
 Conc: 4177.45 ng/ml

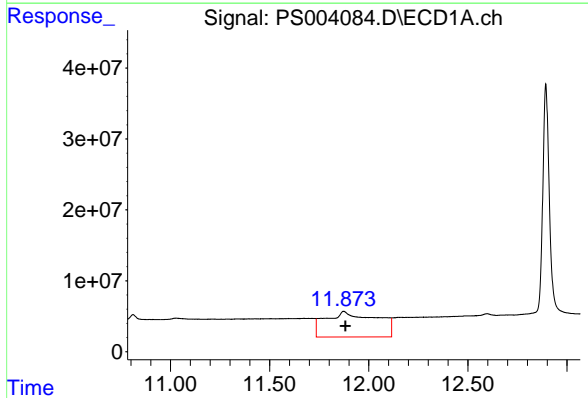


#5 DICAMBA  
 R.T.: 11.507 min  
 Delta R.T.: -0.035 min  
 Response: 252916061  
 Conc: 128.94 ng/ml

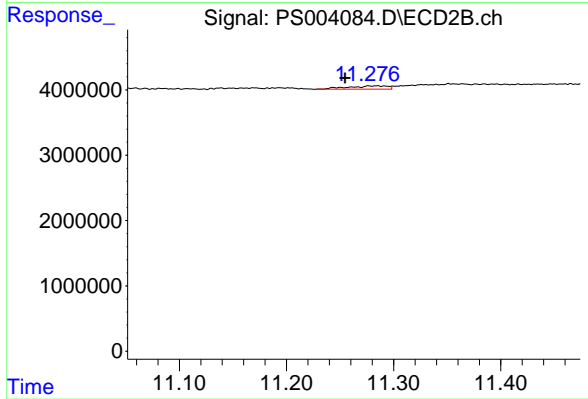
Instrument :  
 ECD\_S  
 ClientSampleId :



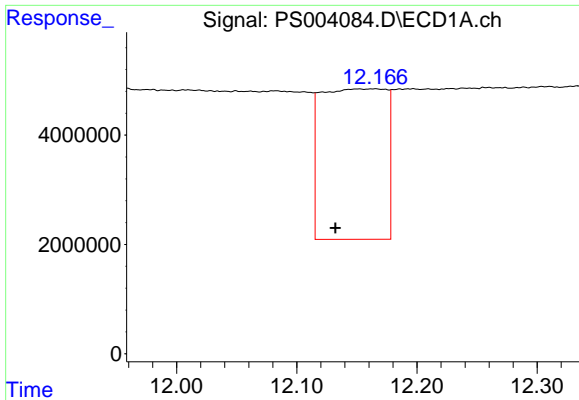
#5 DICAMBA  
 R.T.: 0.000 min  
 Exp R.T. : 11.023 min  
 Response: 0  
 Conc: N.D.



#6 MCPP  
 R.T.: 11.874 min  
 Delta R.T.: -0.009 min  
 Response: 641827714  
 Conc: 491.65 ug/ml

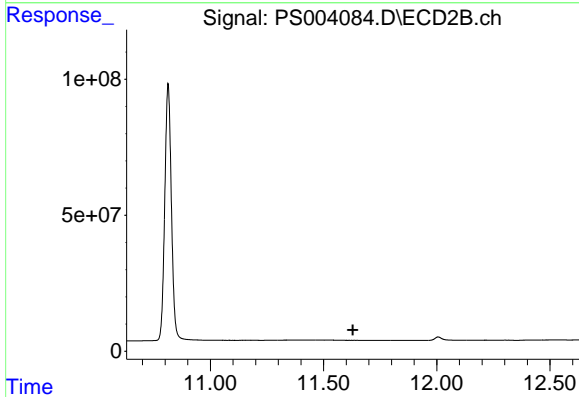


#6 MCPP  
 R.T.: 11.283 min  
 Delta R.T.: 0.028 min  
 Response: 1302579  
 Conc: 1.25 ug/ml

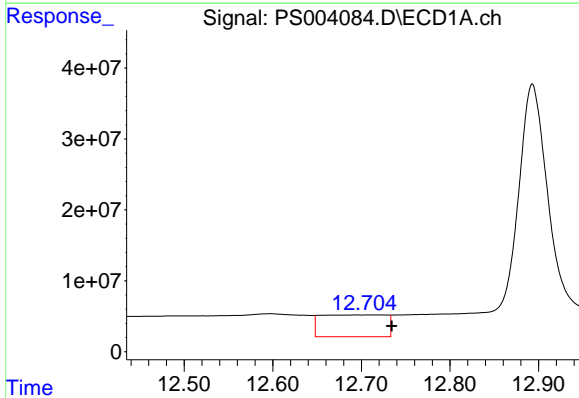


#7 MCPA  
 R.T.: 12.161 min  
 Delta R.T.: 0.029 min  
 Response: 103096129  
 Conc: 49.97 ug/ml

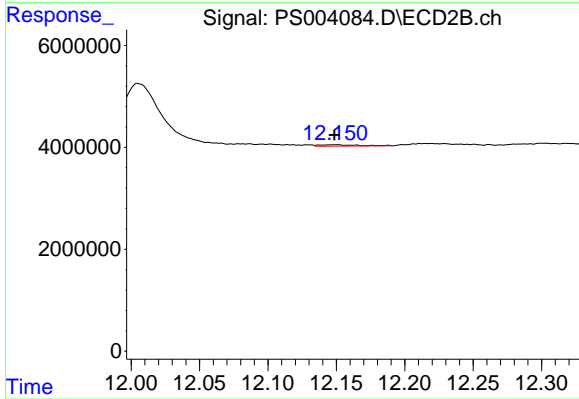
Instrument :  
 ECD\_S  
 ClientSampleId :



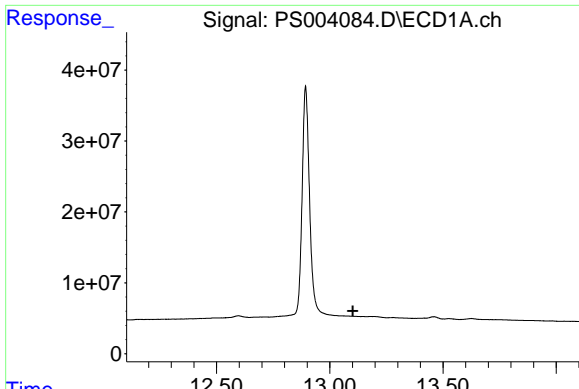
#7 MCPA  
 R.T.: 0.000 min  
 Exp R.T. : 11.630 min  
 Response: 0  
 Conc: N.D.



#8 DICHLORPROP  
 R.T.: 12.714 min  
 Delta R.T.: -0.020 min  
 Response: 155955242  
 Conc: 322.16 ng/ml

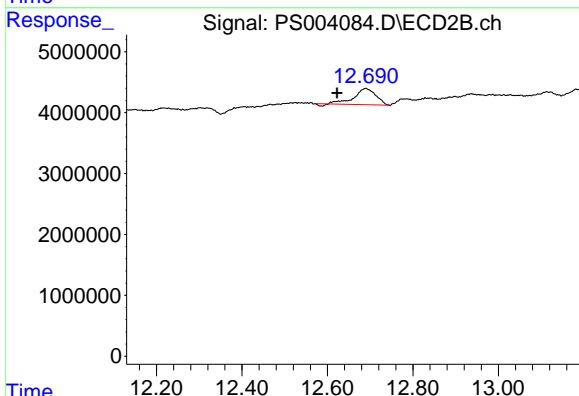


#8 DICHLORPROP  
 R.T.: 12.149 min  
 Delta R.T.: 0.000 min  
 Response: 515777  
 Conc: 1.21 ng/ml

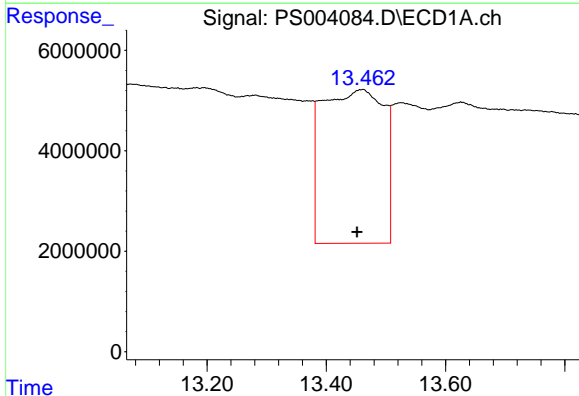


#9 2,4-D  
 R.T.: 0.000 min  
 Exp R.T.: 13.102 min  
 Response: 0  
 Conc: N.D.

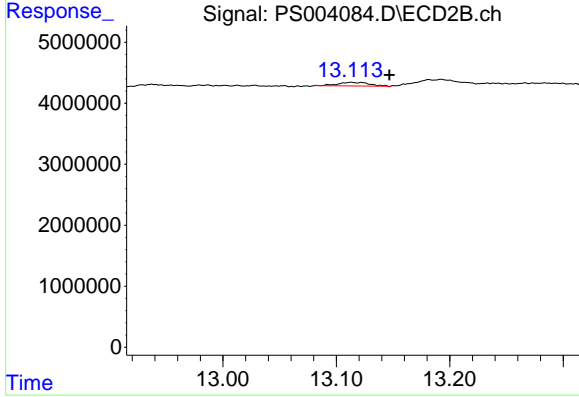
Instrument :  
 ECD\_S  
 ClientSampleId :



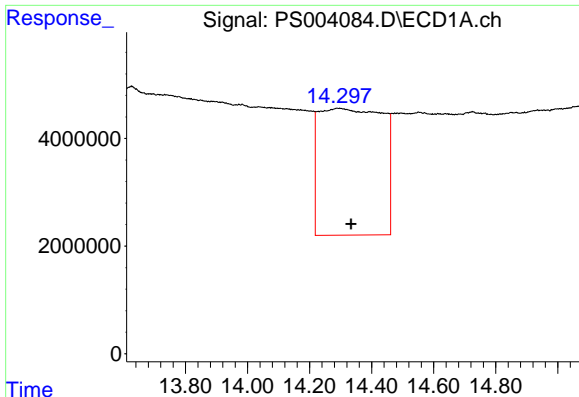
#9 2,4-D  
 R.T.: 12.690 min  
 Delta R.T.: 0.067 min  
 Response: 9153466  
 Conc: 17.89 ng/ml



#10 Pentachlorophenol  
 R.T.: 13.459 min  
 Delta R.T.: 0.007 min  
 Response: 219321756  
 Conc: 30.24 ng/ml

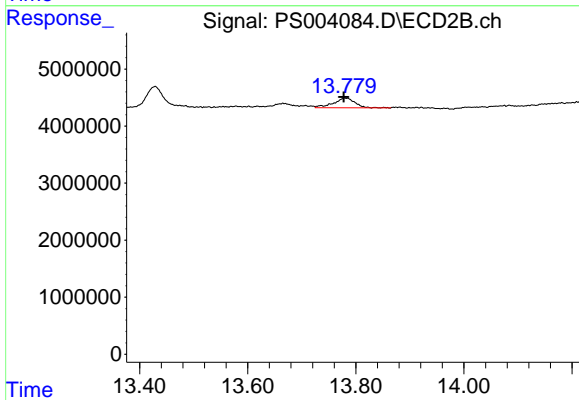


#10 Pentachlorophenol  
 R.T.: 13.113 min  
 Delta R.T.: -0.034 min  
 Response: 1137767  
 Conc: N.D.

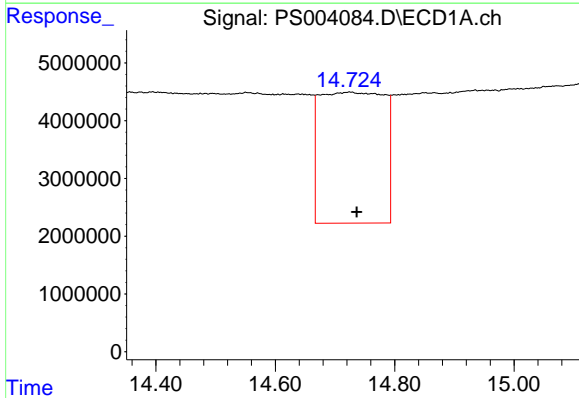


#11 2,4,5-TP (SILVEX)  
 R.T.: 14.293 min  
 Delta R.T.: -0.041 min  
 Response: 335904756  
 Conc: 124.07 ng/ml

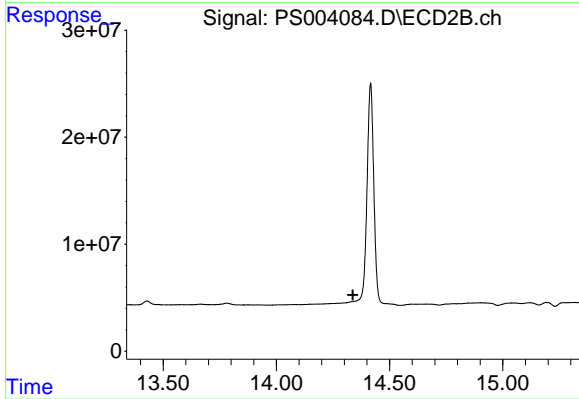
Instrument :  
 ECD\_S  
 ClientSampled :



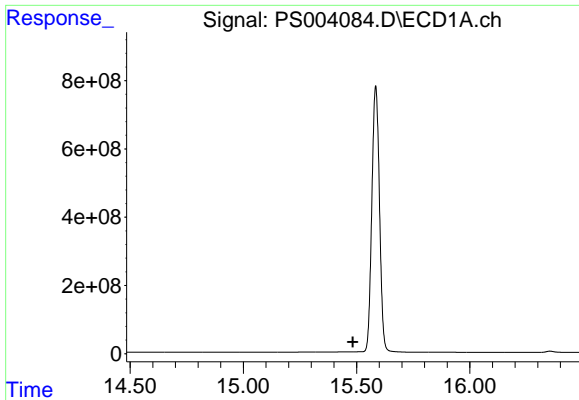
#11 2,4,5-TP (SILVEX)  
 R.T.: 13.781 min  
 Delta R.T.: 0.004 min  
 Response: 4713282  
 Conc: 1.96 ng/ml



#12 2,4,5-T  
 R.T.: 14.724 min  
 Delta R.T.: -0.012 min  
 Response: 169842985  
 Conc: 57.68 ng/ml



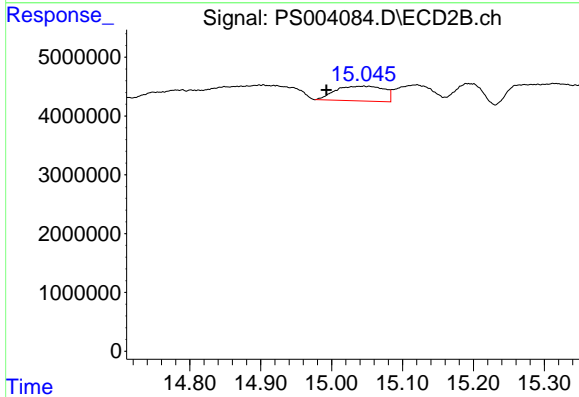
#12 2,4,5-T  
 R.T.: 0.000 min  
 Exp R.T. : 14.338 min  
 Response: 0  
 Conc: N.D.



#13 2,4-DB

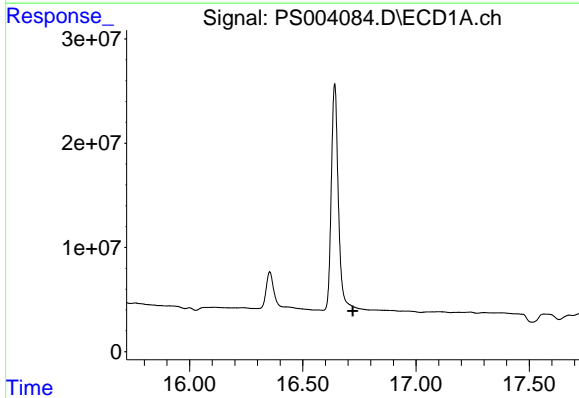
R.T.: 0.000 min  
 Exp R.T. : 15.484 min  
 Response: 0  
 Conc: N.D.

Instrument :  
 ECD\_S  
 ClientSampleId :



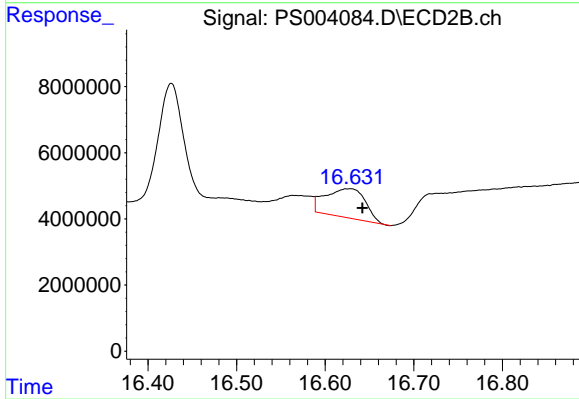
#13 2,4-DB

R.T.: 15.044 min  
 Delta R.T.: 0.052 min  
 Response: 11885514  
 Conc: 38.58 ng/ml



#15 Picloram

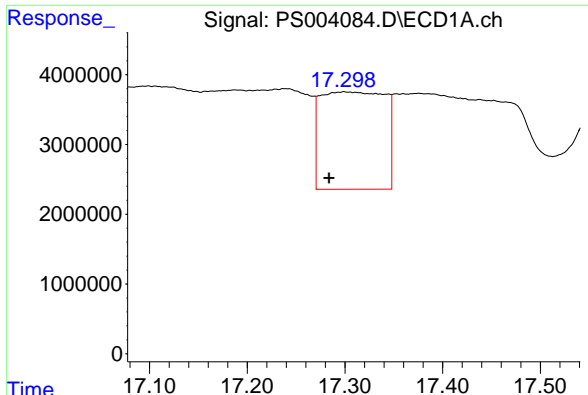
R.T.: 0.000 min  
 Exp R.T. : 16.721 min  
 Response: 0  
 Conc: N.D.



#15 Picloram

R.T.: 16.627 min  
 Delta R.T.: -0.015 min  
 Response: 27158081  
 Conc: 7.93 ng/ml

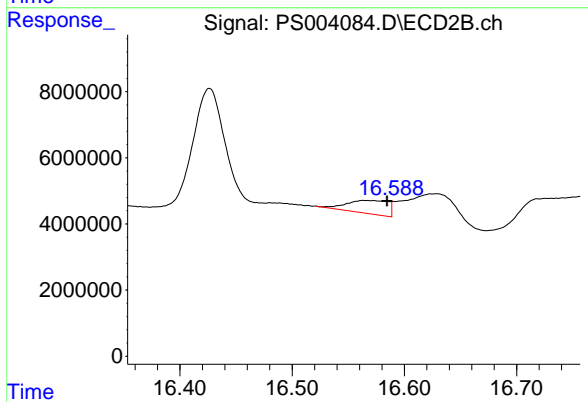




#16 DCPA

R.T.: 17.300 min  
 Delta R.T.: 0.017 min  
 Response: 63790971  
 Conc: 17.72 ng/ml

Instrument :  
 ECD\_S  
 ClientSampleId :



#16 DCPA

R.T.: 16.566 min  
 Delta R.T.: -0.019 min  
 Response: 10267836  
 Conc: 3.23 ng/ml