

Data Path : Z:\pestpcbsrv\HPCHEM1\ECD_S\Data\PS042220\
 Data File : PS009969.D
 Signal(s) : Signal #1: ECD1A.ch Signal #2: ECD2B.ch
 Acq On : 22 Apr 2020 17:04
 Operator : DD\AJ
 Sample : L2357-04
 Misc :
 ALS Vial : 12 Sample Multiplier: 1

Instrument :
 ECD_S
 ClientSampleId :
 TP-6

Integration File signal 1: autoint1.e
 Integration File signal 2: autoint2.e
 Quant Time: Apr 23 01:45:51 2020
 Quant Method : Z:\pestpcbsrv\HPCHEM1\ECD_S\Method\PS040820.M
 Quant Title : 8080.M
 QLast Update : Thu Apr 09 05:27:48 2020
 Response via : Initial Calibration
 Integrator: ChemStation

Volume Inj. : 2 µl
 Signal #1 Phase : Rtx-CLPesticides Signal #2 Phase: Rtx-CLPesticides2
 Signal #1 Info : 30M x 0.32mm x0.5 Signal #2 Info : 30M x 0.32mm x 0.25µm

| Compound | RT#1 | RT#2 | Resp#1 | Resp#2 | ng/ml | ng/ml |
|-----------------------------|-------|-------|---------|---------|---------|---------|
| ----- | | | | | | |
| System Monitoring Compounds | | | | | | |
| 4) S 2,4-DCAA | 7.235 | 6.922 | 177.3E6 | 177.0E6 | 293.592 | 357.319 |

Target Compounds

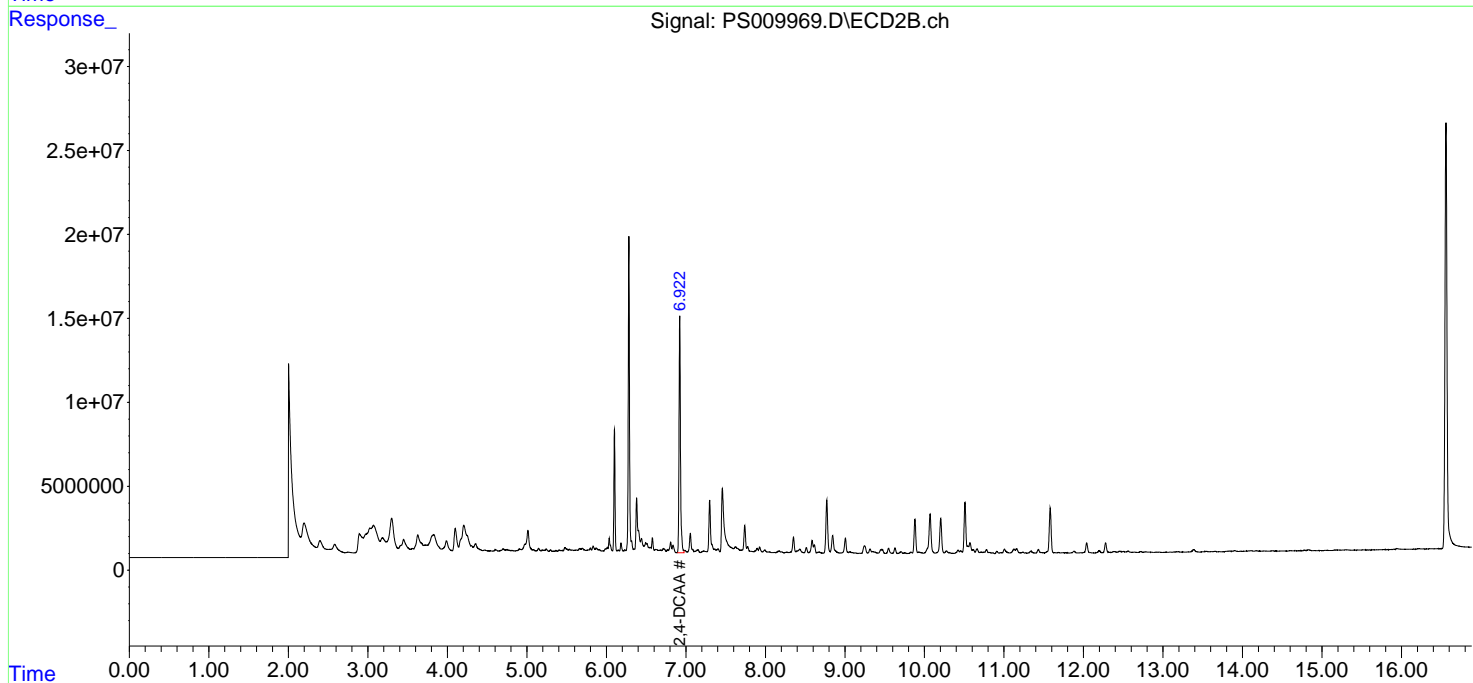
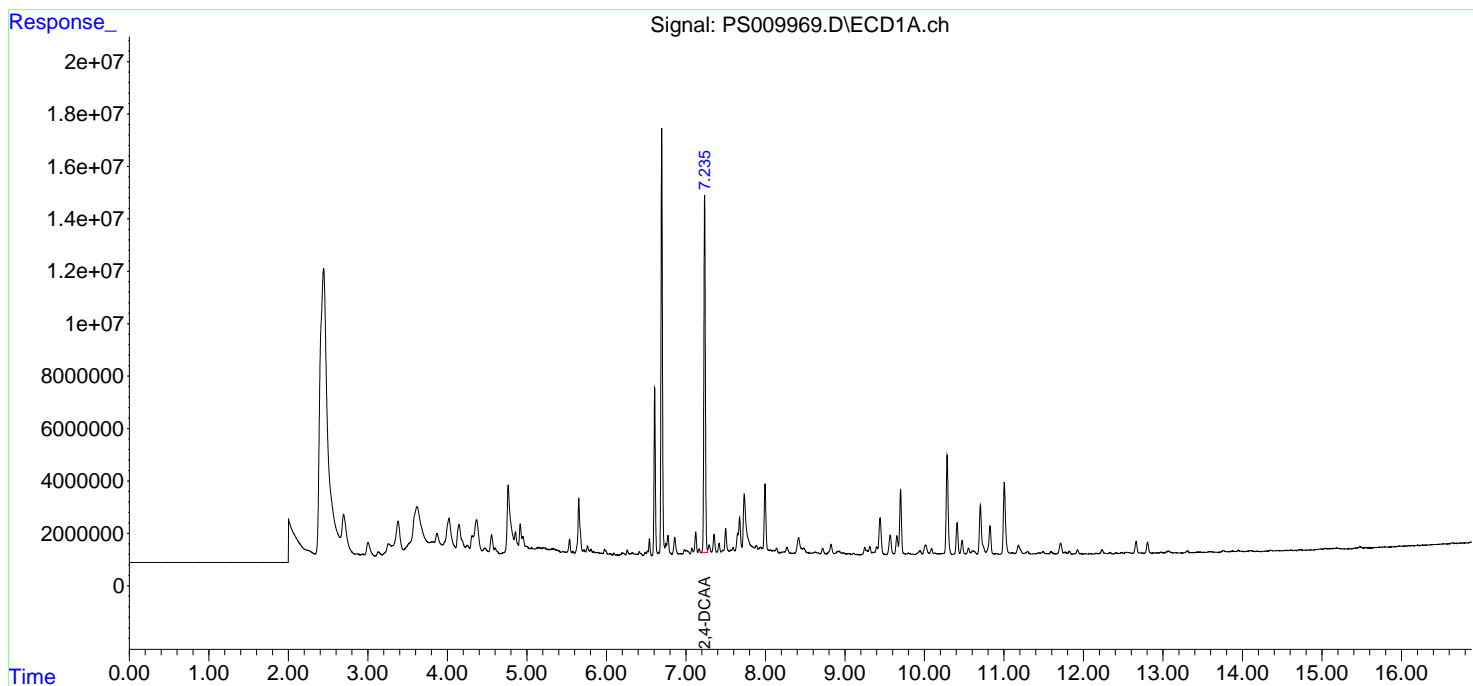
(f)=RT Delta > 1/2 Window (#)=Amounts differ by > 25% (m)=manual int.

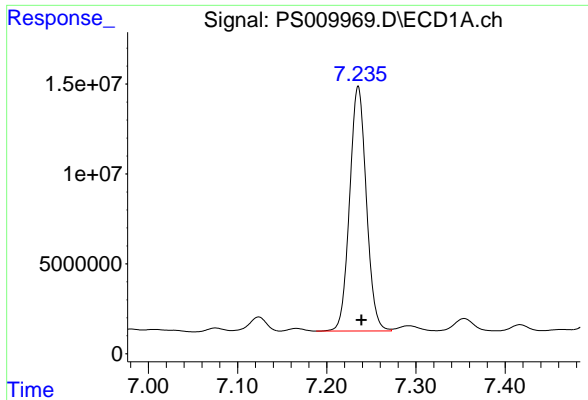
Data Path : Z:\pestpcbsrv\HPCHEM1\ECD_S\Data\PS042220\
 Data File : PS009969.D
 Signal(s) : Signal #1: ECD1A.ch Signal #2: ECD2B.ch
 Acq On : 22 Apr 2020 17:04
 Operator : DD\AJ
 Sample : L2357-04
 Misc :
 ALS Vial : 12 Sample Multiplier: 1

Instrument :
 ECD_S
 ClientSampleId :
 TP-6

Integration File signal 1: autoint1.e
 Integration File signal 2: autoint2.e
 Quant Time: Apr 23 01:45:51 2020
 Quant Method : Z:\pestpcbsrv\HPCHEM1\ECD_S\Method\PS040820.M
 Quant Title : 8080.M
 QLast Update : Thu Apr 09 05:27:48 2020
 Response via : Initial Calibration
 Integrator: ChemStation

Volume Inj. : 2 µl
 Signal #1 Phase : Rtx-CLPesticides Signal #2 Phase: Rtx-CLPesticides2
 Signal #1 Info : 30M x 0.32mm x0.5 Signal #2 Info : 30M x 0.32mm x 0.25µm





#4 2,4-DCAA

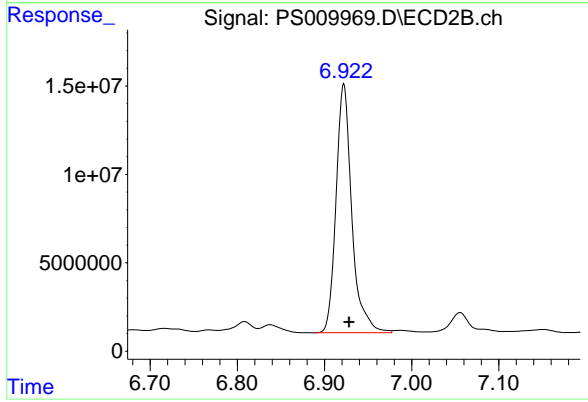
R.T.: 7.235 min

Delta R.T.: -0.004 min

Response: 177275549

Conc: 293.59 ng/ml

Instrument :
ECD_S
ClientSampleId :
TP-6



#4 2,4-DCAA

R.T.: 6.922 min

Delta R.T.: -0.006 min

Response: 176962153

Conc: 357.32 ng/ml