

Data Path : Z:\pestpcbsrv\HPCHEM1\ECD_S\Data\PS042419\
 Data File : PS004269.D
 Signal(s) : Signal #1: ECD1A.ch Signal #2: ECD2B.ch
 Acq On : 24 Apr 2019 21:40
 Operator : EI\SJ
 Sample : K2532-20
 Misc :
 ALS Vial : 14 Sample Multiplier: 1

Instrument :
 ECD_S
 ClientSampleId :
 TP-14

Integration File signal 1: autoint1.e
 Integration File signal 2: autoint2.e
 Quant Time: Apr 25 00:57:01 2019
 Quant Method : Z:\pestpcbsrv\HPCHEM1\ECD_S\Method\PS041119.M
 Quant Title : 8080.M
 QLast Update : Thu Apr 11 14:18:42 2019
 Response via : Initial Calibration
 Integrator: ChemStation

Volume Inj. : 2 µl
 Signal #1 Phase : Rtx-CLPesticides Signal #2 Phase: Rtx-CLPesticides2
 Signal #1 Info : 30M x 0.32mm x0.5 Signal #2 Info : 30M x 0.32mm x 0.25µm

	Compound	RT#1	RT#2	Resp#1	Resp#2	ng/ml	ng/ml

System Monitoring Compounds							
4) S	2,4-DCAA	11.240	10.743	192.9E6	169.8E6	397.651	369.757
Target Compounds							
1) T	Dalapon	2.808	2.301	39503205	49481680	57.661	78.736 #
2) T	3,5-DICHL...	0.000	8.907	0	3151540	N.D.	5.513
3) T	4-Nitroph...	10.867	9.896	13331826	9683904	52.779	40.382
5) T	DICAMBA	0.000	10.984	0	3612801	N.D.	2.194
6) T	MCPP	11.911	0.000	12976848	0	9.940	N.D. #
8) T	DICHLORPROP	0.000	12.085	0	2024436	N.D.	4.769
9) T	2,4-D	13.219	12.596	12503624	741202	27.461	1.448 #
12) T	2,4,5-T	0.000	14.340	0	680296	N.D.	<MDL
13) T	2,4-DB	15.497	0.000	6111166	0	19.624	N.D. #
14) T	DINOSEB	16.945	15.400	3947681	2972518	1.576	1.590
15) T	Picloram	16.708	16.608	3285237	-2798943	<MDL	N.D. #
16) T	DCPA	17.253	16.608	6261593	-2798943	1.739	N.D. #

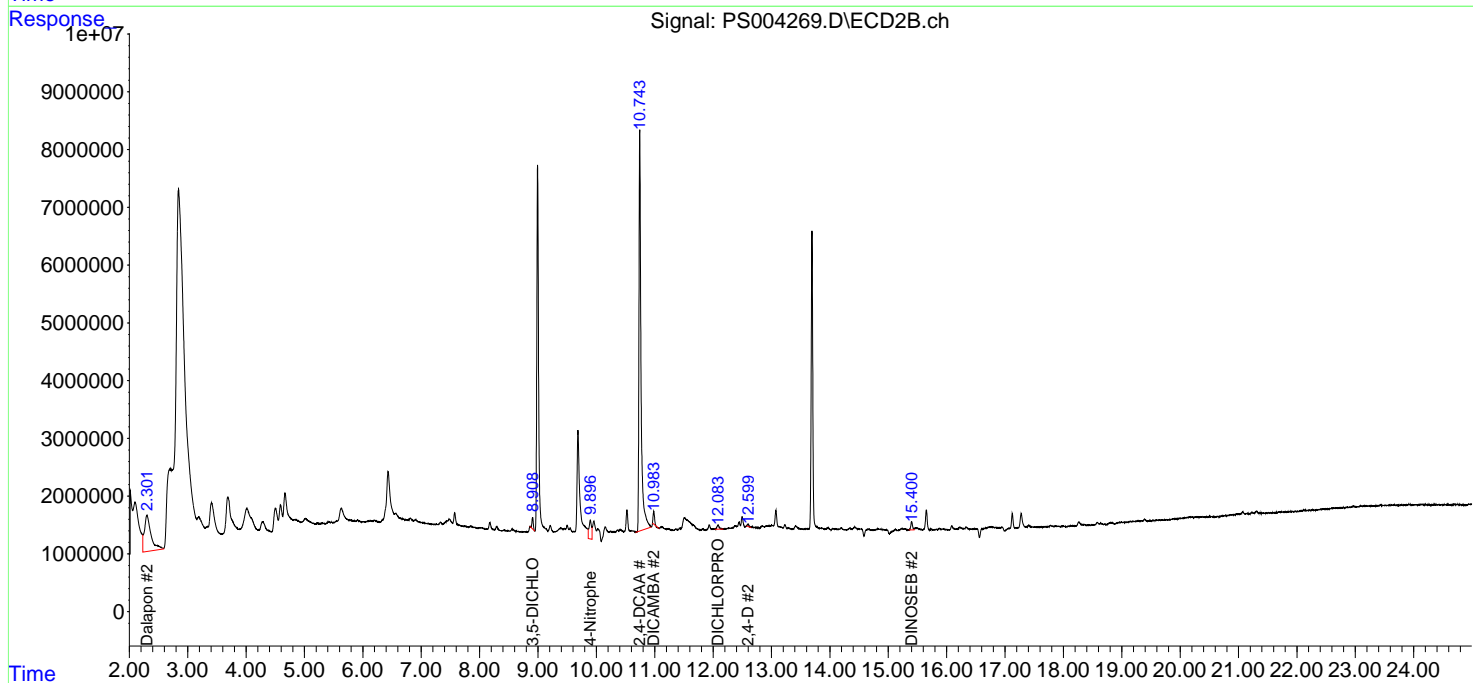
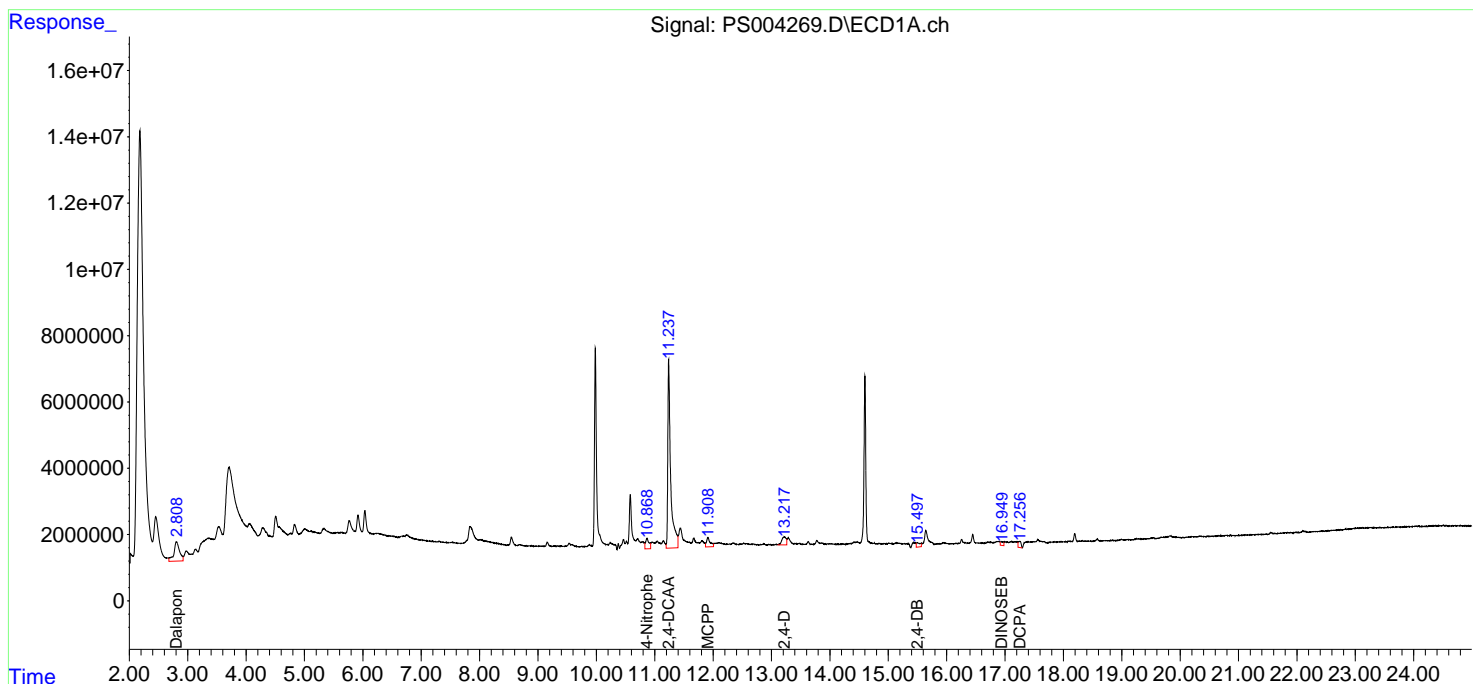
(f)=RT Delta > 1/2 Window (#)=Amounts differ by > 25% (m)=manual int.

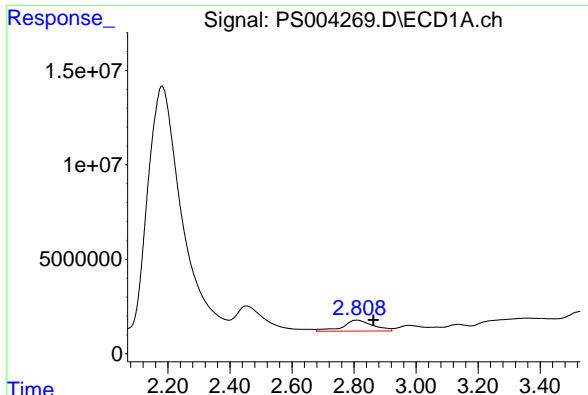
Data Path : Z:\pestpcbsrv\HPCHEM1\ECD_S\Data\PS042419\
 Data File : PS004269.D
 Signal(s) : Signal #1: ECD1A.ch Signal #2: ECD2B.ch
 Acq On : 24 Apr 2019 21:40
 Operator : EI\SJ
 Sample : K2532-20
 Misc :
 ALS Vial : 14 Sample Multiplier: 1

Instrument :
 ECD_S
 ClientSampled :
 TP-14

Integration File signal 1: autoint1.e
 Integration File signal 2: autoint2.e
 Quant Time: Apr 25 00:57:01 2019
 Quant Method : Z:\pestpcbsrv\HPCHEM1\ECD_S\Method\PS041119.M
 Quant Title : 8080.M
 QLast Update : Thu Apr 11 14:18:42 2019
 Response via : Initial Calibration
 Integrator: ChemStation

Volume Inj. : 2 µl
 Signal #1 Phase : Rtx-CLPesticides Signal #2 Phase: Rtx-CLPesticides2
 Signal #1 Info : 30M x 0.32mm x 0.5 Signal #2 Info : 30M x 0.32mm x 0.25µm

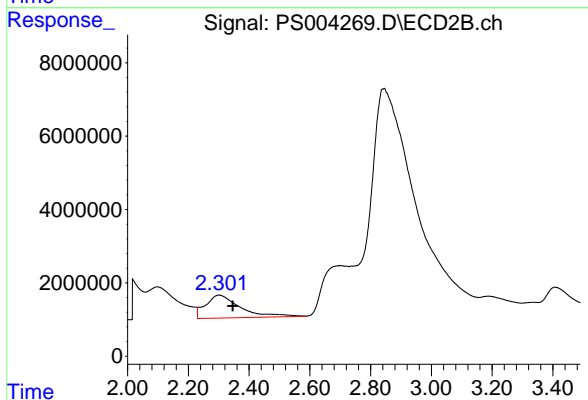




#1 Dalapon

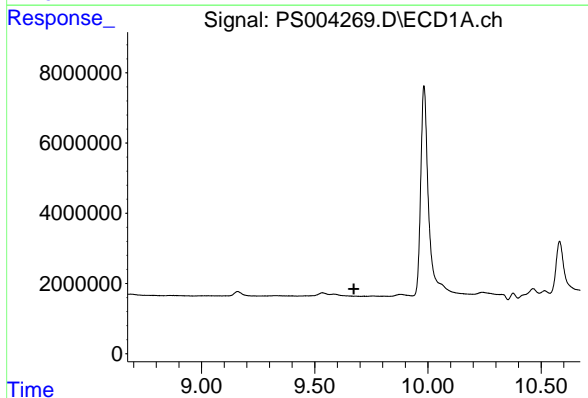
R.T.: 2.808 min
 Delta R.T.: -0.054 min
 Response: 39503205
 Conc: 57.66 ng/ml

Instrument :
 ECD_S
 ClientSampled :
 TP-14



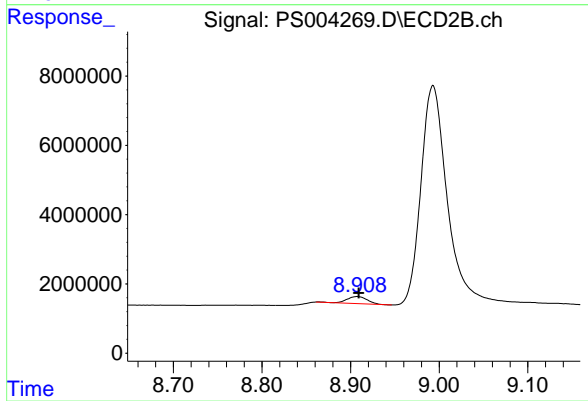
#1 Dalapon

R.T.: 2.301 min
 Delta R.T.: -0.045 min
 Response: 49481680
 Conc: 78.74 ng/ml



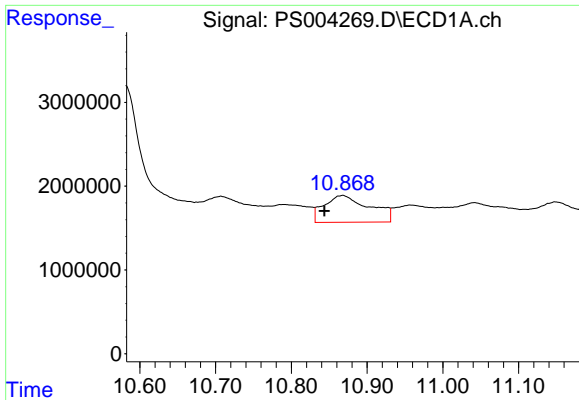
#2 3,5-DICHLOROBENZOIC ACID

R.T.: 0.000 min
 Exp R.T. : 9.673 min
 Response: 0
 Conc: N.D.



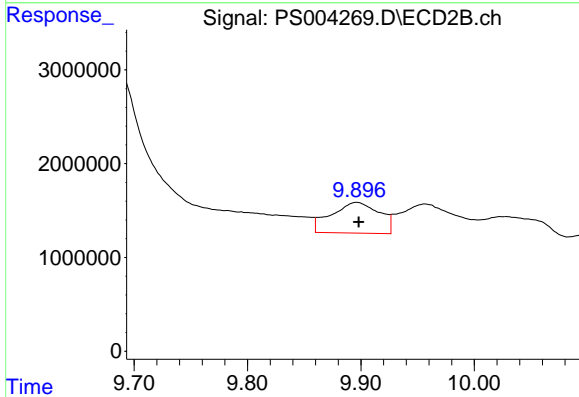
#2 3,5-DICHLOROBENZOIC ACID

R.T.: 8.907 min
 Delta R.T.: -0.002 min
 Response: 3151540
 Conc: 5.51 ng/ml

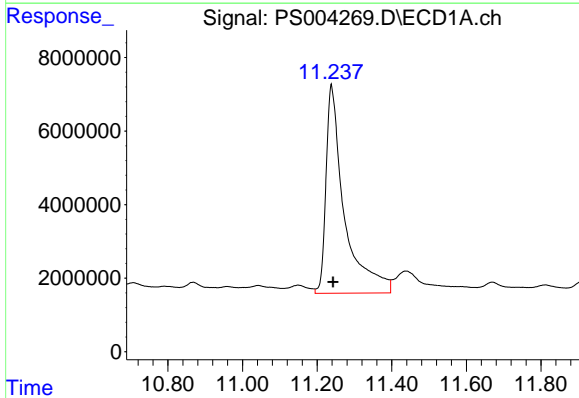


#3 4-Nitrophenol
 R.T.: 10.867 min
 Delta R.T.: 0.024 min
 Response: 13331826
 Conc: 52.78 ng/ml

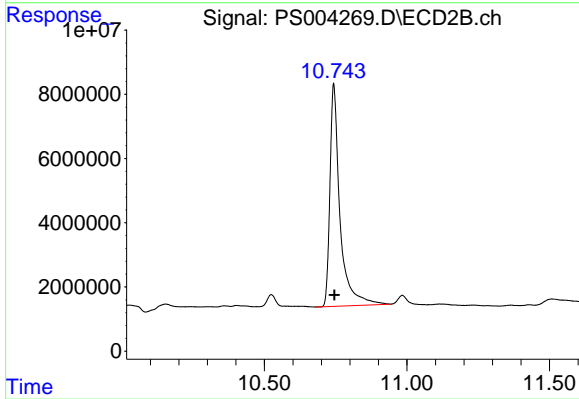
Instrument :
 ECD_S
 ClientSampleId :
 TP-14



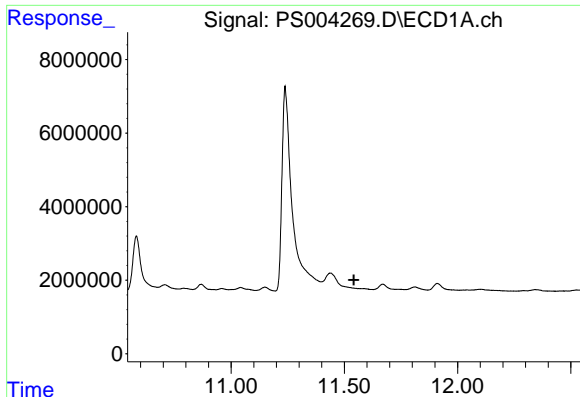
#3 4-Nitrophenol
 R.T.: 9.896 min
 Delta R.T.: -0.002 min
 Response: 9683904
 Conc: 40.38 ng/ml



#4 2,4-DCAA
 R.T.: 11.240 min
 Delta R.T.: -0.004 min
 Response: 192945884
 Conc: 397.65 ng/ml



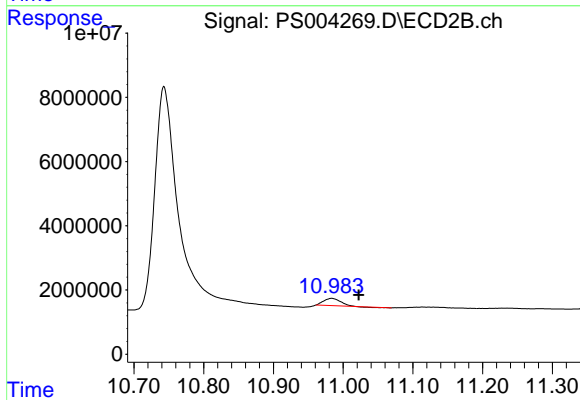
#4 2,4-DCAA
 R.T.: 10.743 min
 Delta R.T.: -0.002 min
 Response: 169808038
 Conc: 369.76 ng/ml



#5 DICAMBA

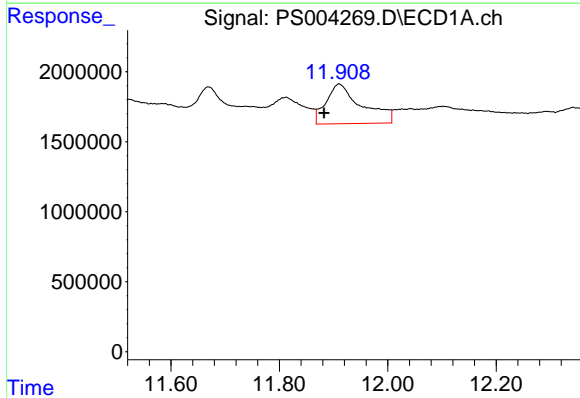
R.T.: 0.000 min
 Exp R.T.: 11.542 min
 Response: 0
 Conc: N.D.

Instrument :
 ECD_S
 ClientSampled :
 TP-14



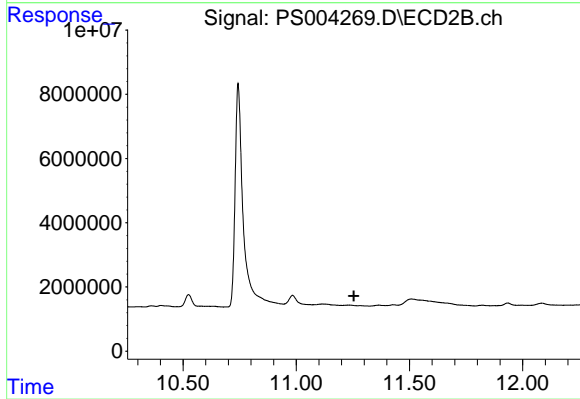
#5 DICAMBA

R.T.: 10.984 min
 Delta R.T.: -0.039 min
 Response: 3612801
 Conc: 2.19 ng/ml



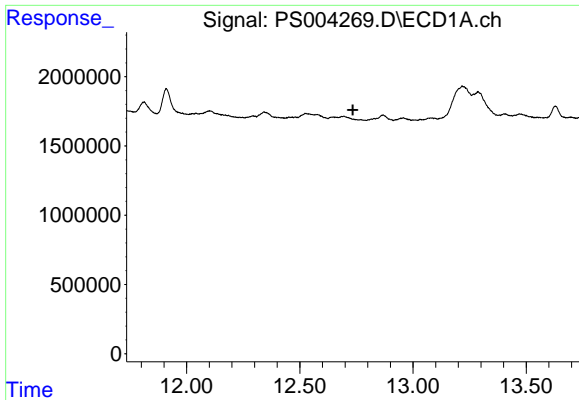
#6 MCPP

R.T.: 11.911 min
 Delta R.T.: 0.028 min
 Response: 12976848
 Conc: 9.94 ug/ml



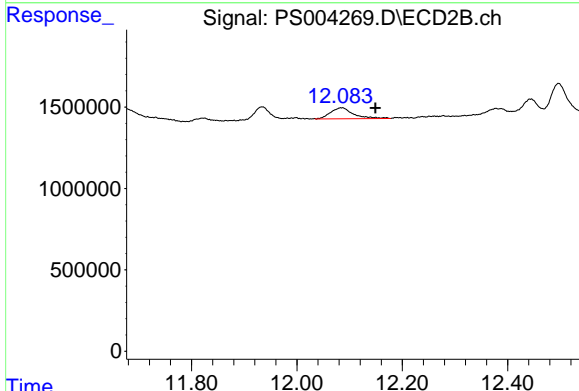
#6 MCPP

R.T.: 0.000 min
 Exp R.T.: 11.255 min
 Response: 0
 Conc: N.D.

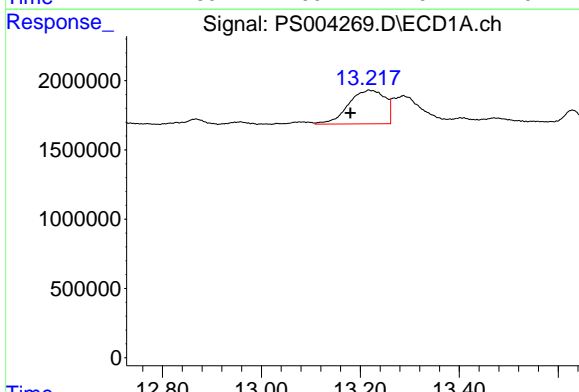


#8 DICHLORPROP
 R.T.: 0.000 min
 Exp R.T.: 12.734 min
 Response: 0
 Conc: N.D.

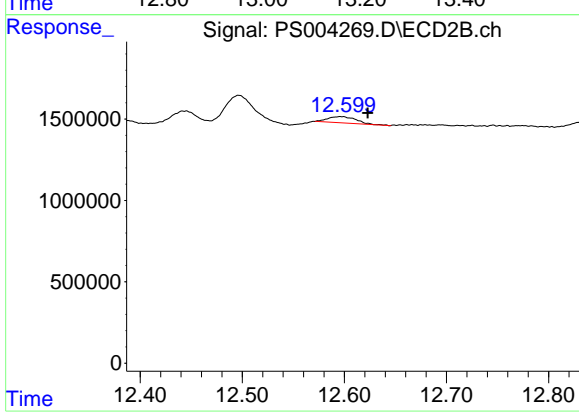
Instrument :
 ECD_S
 ClientSampled :
 TP-14



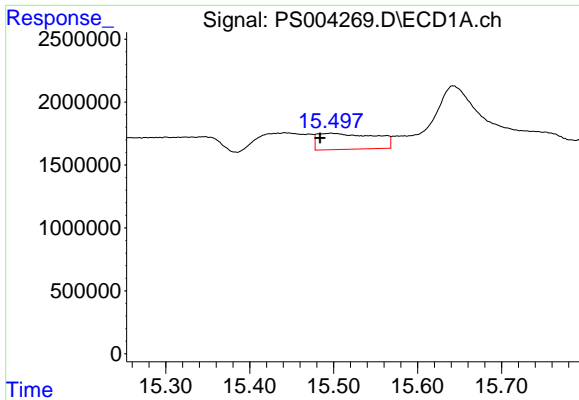
#8 DICHLORPROP
 R.T.: 12.085 min
 Delta R.T.: -0.064 min
 Response: 2024436
 Conc: 4.77 ng/ml



#9 2,4-D
 R.T.: 13.219 min
 Delta R.T.: 0.039 min
 Response: 12503624
 Conc: 27.46 ng/ml

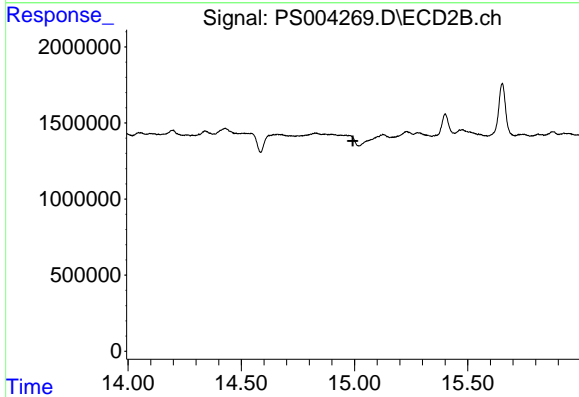


#9 2,4-D
 R.T.: 12.596 min
 Delta R.T.: -0.027 min
 Response: 741202
 Conc: 1.45 ng/ml

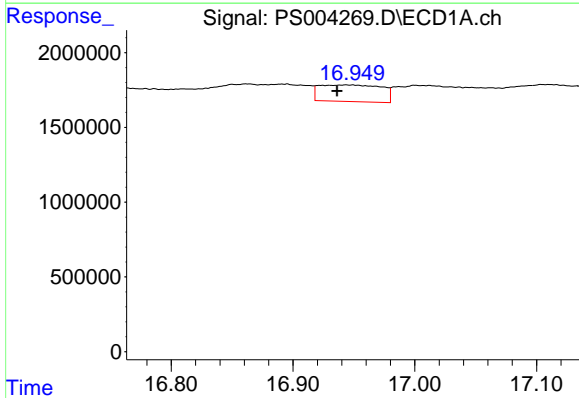


#13 2,4-DB
 R.T.: 15.497 min
 Delta R.T.: 0.013 min
 Response: 6111166
 Conc: 19.62 ng/ml

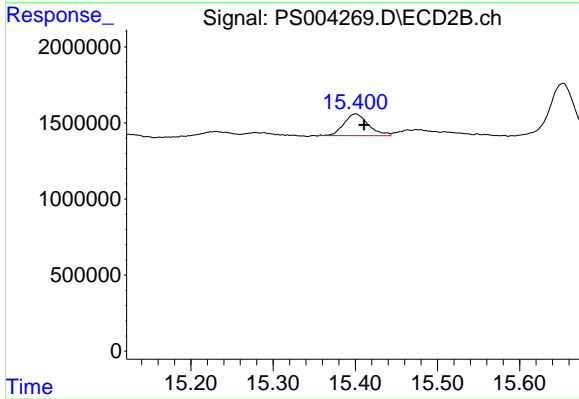
Instrument :
 ECD_S
 ClientSampled :
 TP-14



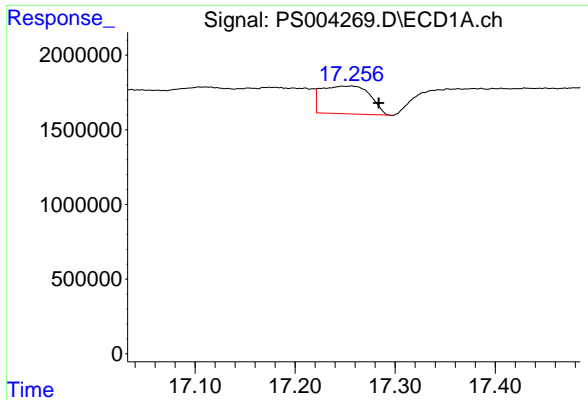
#13 2,4-DB
 R.T.: 0.000 min
 Exp R.T. : 14.993 min
 Response: 0
 Conc: N.D.



#14 DINOSEB
 R.T.: 16.945 min
 Delta R.T.: 0.008 min
 Response: 3947681
 Conc: 1.58 ng/ml



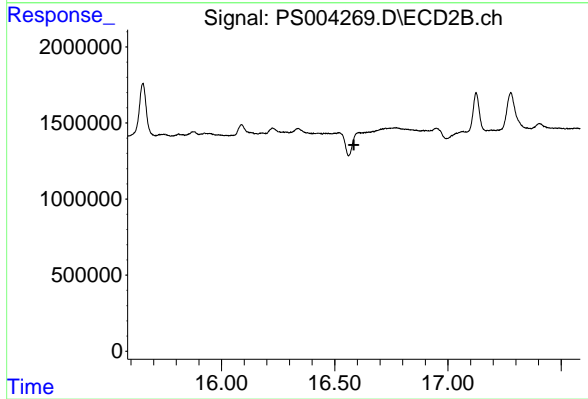
#14 DINOSEB
 R.T.: 15.400 min
 Delta R.T.: -0.011 min
 Response: 2972518
 Conc: 1.59 ng/ml



#16 DCPA

R.T.: 17.253 min
Delta R.T.: -0.031 min
Response: 6261593
Conc: 1.74 ng/ml

Instrument :
ECD_S
ClientSampleId :
TP-14



#16 DCPA

R.T.: 16.608 min
Delta R.T.: 0.023 min
Response: -2798943
Conc: N.D.