

Data Path : Z:\pestpcbsrv\HPCHEM1\ECD\_S\Data\PS042419\  
 Data File : PS004265.D  
 Signal(s) : Signal #1: ECD1A.ch Signal #2: ECD2B.ch  
 Acq On : 24 Apr 2019 19:32  
 Operator : EI\SJ  
 Sample : K2532-04  
 Misc :  
 ALS Vial : 10 Sample Multiplier: 1

**Instrument :**  
 ECD\_S  
**ClientSampleId :**  
 TP-5

**Manual Integrations**  
**APPROVED**  
 mohammad  
 4/26/2019 1:22:47 PM

Integration File signal 1: autoint1.e  
 Integration File signal 2: autoint2.e  
 Quant Time: Apr 25 00:55:51 2019  
 Quant Method : Z:\pestpcbsrv\HPCHEM1\ECD\_S\Method\PS041119.M  
 Quant Title : 8080.M  
 QLast Update : Thu Apr 11 14:18:42 2019  
 Response via : Initial Calibration  
 Integrator: ChemStation

Volume Inj. : 2 µl  
 Signal #1 Phase : Rtx-CLPesticides Signal #2 Phase: Rtx-CLPesticides2  
 Signal #1 Info : 30M x 0.32mm x0.5 Signal #2 Info : 30M x 0.32mm x 0.25µm

Compound	RT#1	RT#2	Resp#1	Resp#2	ng/ml	ng/ml
-----						
System Monitoring Compounds						
4) S 2,4-DCAA	11.230	10.740	216.0E6	202.0E6	445.102m	439.749
Target Compounds						
-----						

(f)=RT Delta > 1/2 Window (#)=Amounts differ by > 25% (m)=manual int.

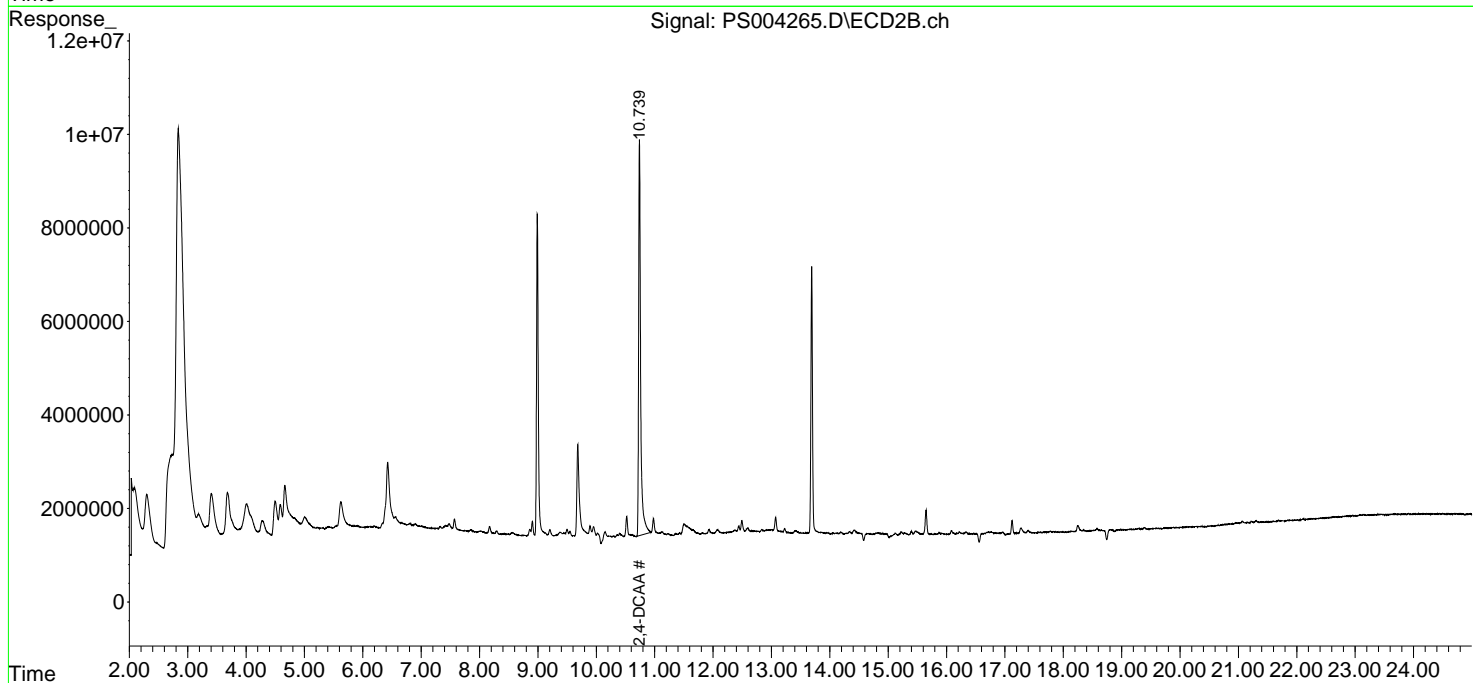
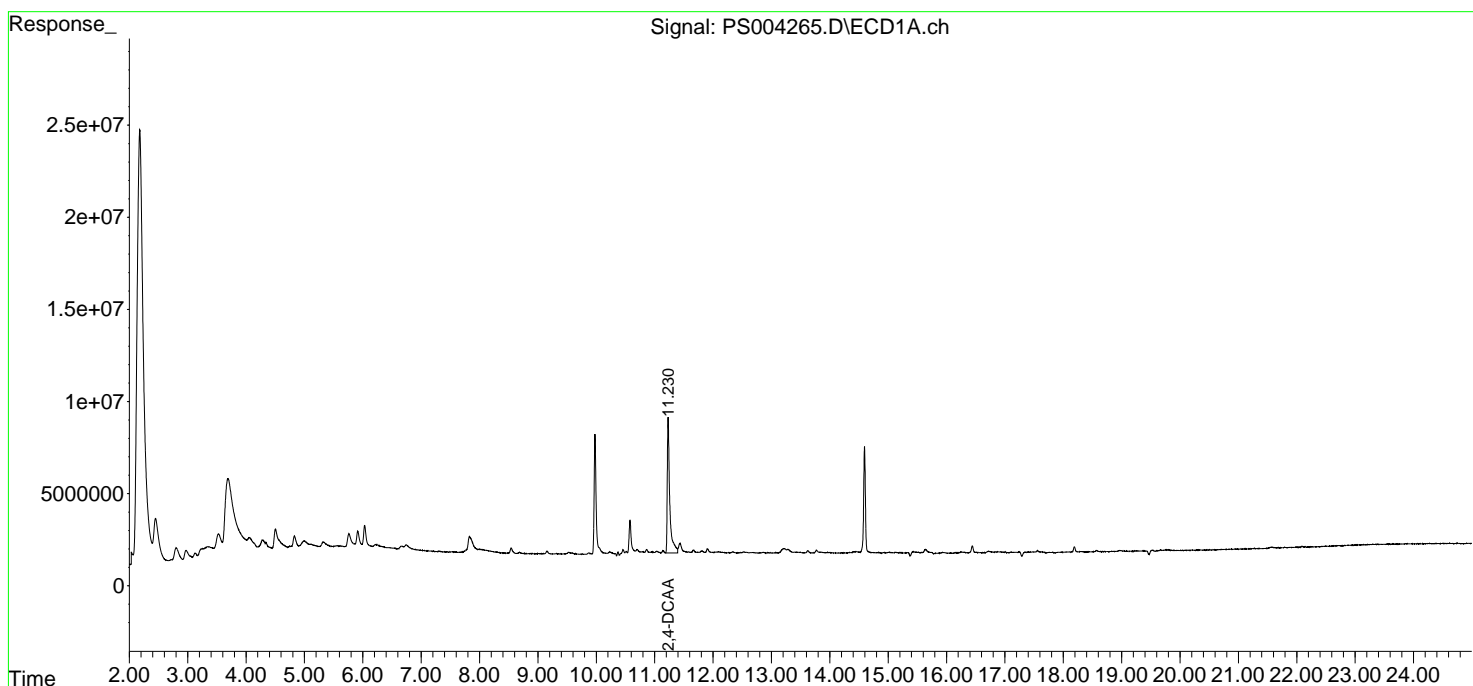
Data Path : Z:\pestpcbsrv\HPCHEM1\ECD\_S\Data\PS042419\  
 Data File : PS004265.D  
 Signal(s) : Signal #1: ECD1A.ch Signal #2: ECD2B.ch  
 Acq On : 24 Apr 2019 19:32  
 Operator : EI\SJ  
 Sample : K2532-04  
 Misc :  
 ALS Vial : 10 Sample Multiplier: 1

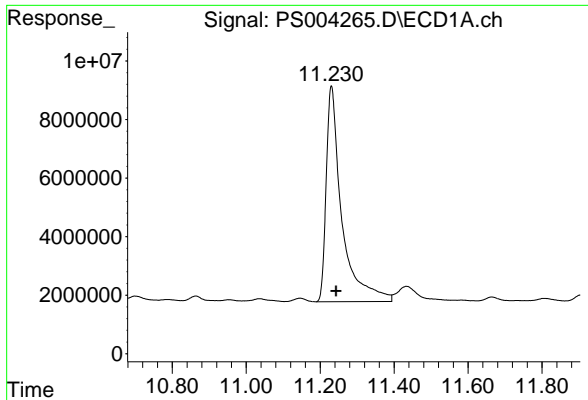
Instrument :  
 ECD\_S  
 ClientSampled :  
 TP-5

Manual Integrations  
**APPROVED**  
 mohammad  
 4/26/2019 1:22:47 PM

Integration File signal 1: autoint1.e  
 Integration File signal 2: autoint2.e  
 Quant Time: Apr 25 00:55:51 2019  
 Quant Method : Z:\pestpcbsrv\HPCHEM1\ECD\_S\Method\PS041119.M  
 Quant Title : 8080.M  
 QLast Update : Thu Apr 11 14:18:42 2019  
 Response via : Initial Calibration  
 Integrator: ChemStation

Volume Inj. : 2 µl  
 Signal #1 Phase : Rtx-CLPesticides Signal #2 Phase: Rtx-CLPesticides2  
 Signal #1 Info : 30M x 0.32mm x 0.5 Signal #2 Info : 30M x 0.32mm x 0.25µm

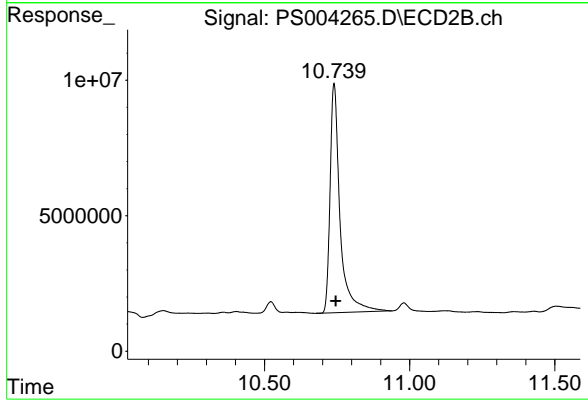




#4 2,4-DCAA  
R.T.: 11.230 min  
Delta R.T.: -0.013 min  
Response: 215970163  
Conc: 445.10 ng/ml m

Instrument :  
ECD\_S  
ClientSampled :  
TP-5

Manual Integrations  
APPROVED  
mohammad  
4/26/2019 1:22:47 PM



#4 2,4-DCAA  
R.T.: 10.740 min  
Delta R.T.: -0.006 min  
Response: 201951141  
Conc: 439.75 ng/ml