

Data Path : Z:\pestpcbsrv\HPCHEM1\ECD\_S\Data\PS053019\  
 Data File : PS004838.D  
 Signal(s) : Signal #1: ECD1A.ch Signal #2: ECD2B.ch  
 Acq On : 30 May 2019 18:33  
 Operator : SM\AJ  
 Sample : K3075-03MSD  
 Misc :  
 ALS Vial : 10 Sample Multiplier: 1

Instrument :  
 ECD\_S  
 ClientSampleId :

Integration File signal 1: autoint1.e  
 Integration File signal 2: autoint2.e  
 Quant Time: May 31 02:19:32 2019  
 Quant Method : Z:\pestpcbsrv\HPCHEM1\ECD\_S\Method\PS052019.M  
 Quant Title : 8080.M  
 QLast Update : Tue May 21 04:53:35 2019  
 Response via : Initial Calibration  
 Integrator: ChemStation

Volume Inj. : 2 µl  
 Signal #1 Phase : Rtx-CLPesticides Signal #2 Phase: Rtx-CLPesticides2  
 Signal #1 Info : 30M x 0.32mm x0.5 Signal #2 Info : 30M x 0.32mm x 0.25µm

	Compound	RT#1	RT#2	Resp#1	Resp#2	ng/ml	ng/ml
-----							
System Monitoring Compounds							
4) S	2,4-DCAA	5.573	5.284	510.4E6	334.6E6	364.090	346.841
Target Compounds							
1) T	Dalapon	2.102	0.000	188.5E6	0	113.715	N.D. #
2) T	3,5-DICHL...	4.921	4.602	511.3E6	322.7E6	296.489	261.923
3) T	4-Nitroph...	5.420	4.958	196.0E6	135.1E6	314.351	285.039
5) T	DICAMBA	5.734	5.418	984.3E6	684.9E6	185.382	185.384
6) T	MCP P	5.930	5.503	27258795	74985854	6.548	27.367 #
7) T	MCPA	6.069	5.687	17901821	122.2E6	3.091	29.856 #
8) T	DICHLORPROP	6.373	5.973	381.1E6	259.1E6	291.170	274.815
9) T	2,4-D	6.589	6.246	479.5E6	369.0E6	350.560	341.351
10) T	Pentachlo...	6.862	6.624	5894.6E6	3990.2E6	335.668	324.805
11) T	2,4,5-TP ...	7.398	6.986	2312.6E6	1597.7E6	315.686	310.516
12) T	2,4,5-T	7.671	7.384	2242.2E6	776.1E6	301.072	174.138 #
13) T	2,4-DB	8.205	7.836	341.5E6	188.2E6	353.524	287.961
14) T	DINOSEB	9.308	8.151	415.4E6	304.0E6	70.234	79.073
15) T	Picloram	9.133	9.094	1307.4E6	822.4E6	125.469	110.238
16) T	DCPA	9.577	9.053	299.6E6	85421408	33.638	13.186 #

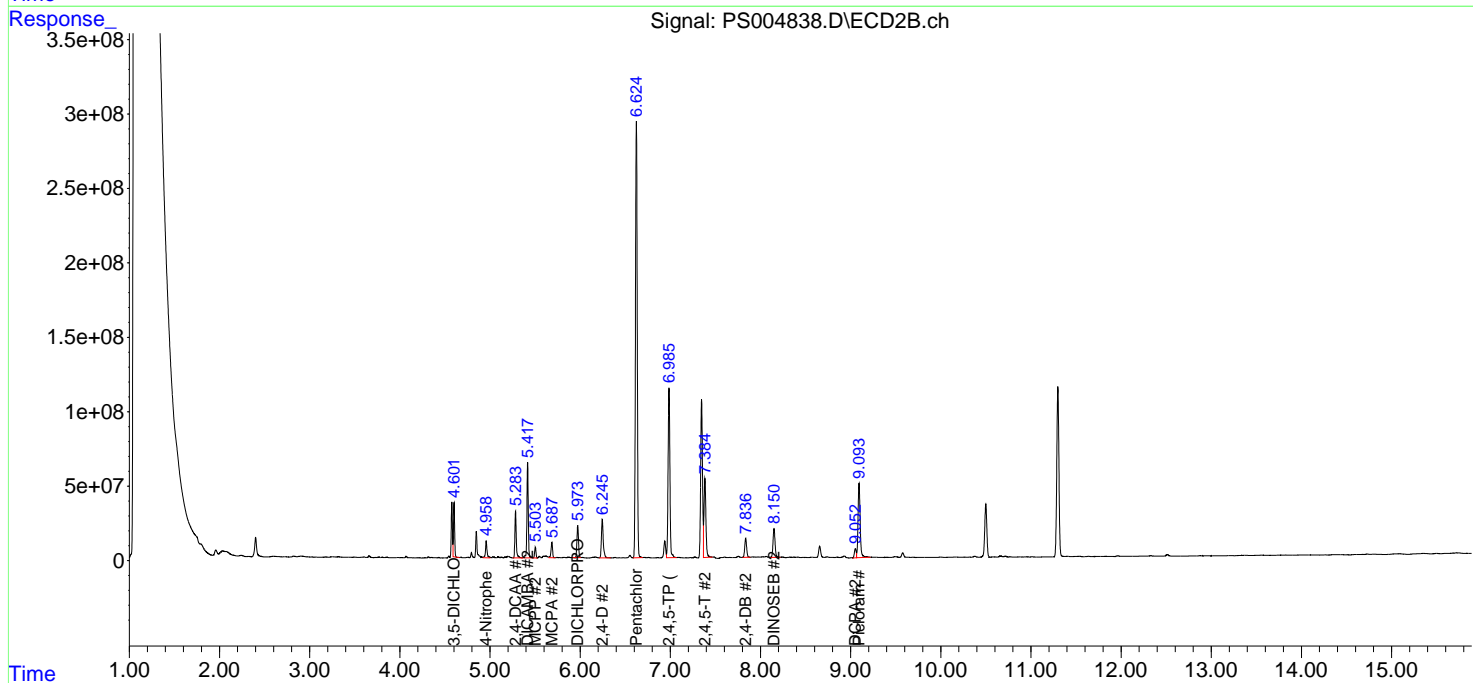
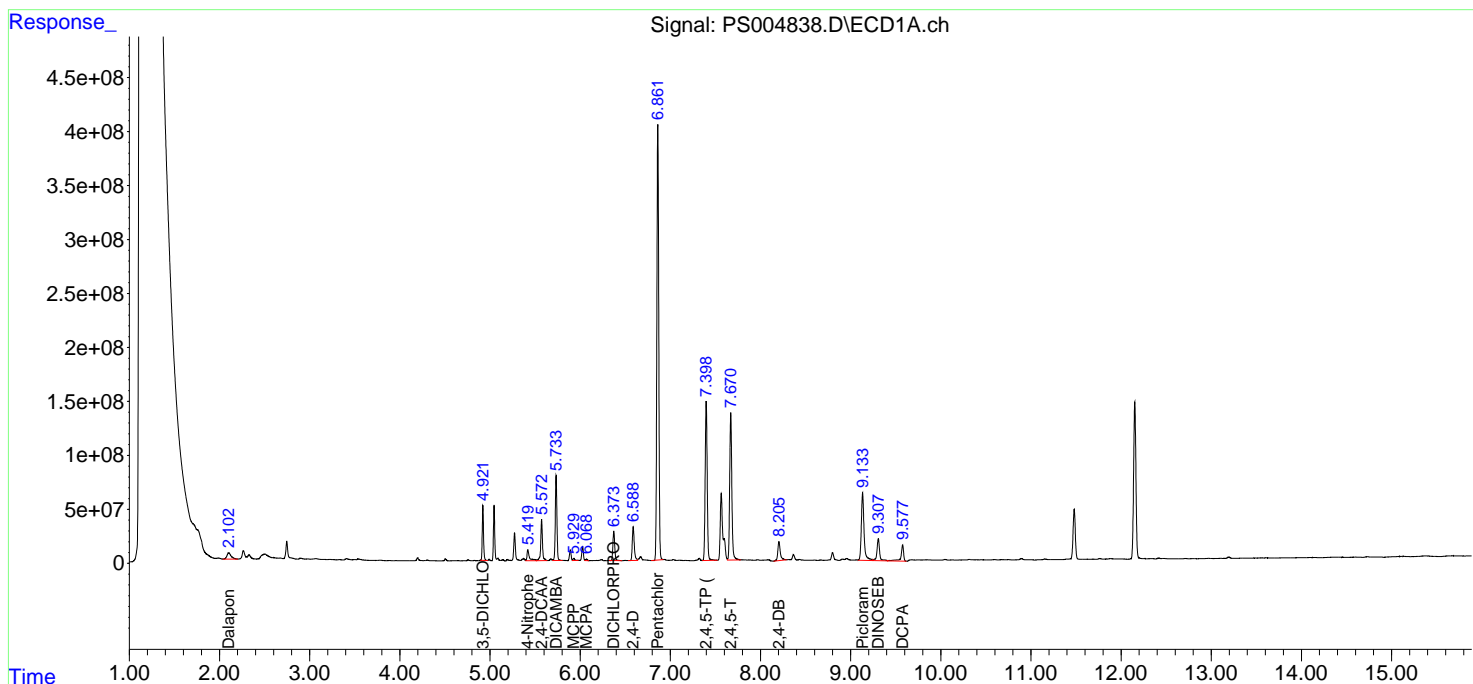
(f)=RT Delta > 1/2 Window (#)=Amounts differ by > 25% (m)=manual int.

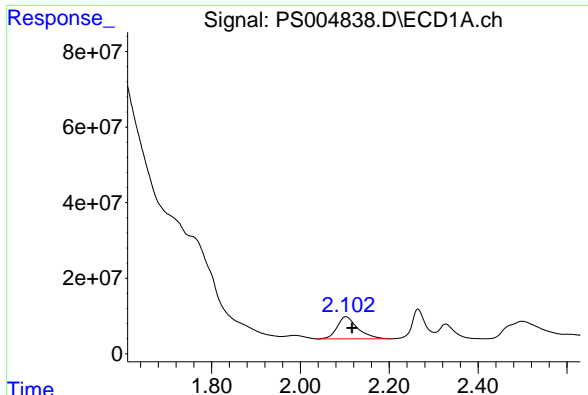
Data Path : Z:\pestpcbsrv\HPCHEM1\ECD\_S\Data\PS053019\  
 Data File : PS004838.D  
 Signal(s) : Signal #1: ECD1A.ch Signal #2: ECD2B.ch  
 Acq On : 30 May 2019 18:33  
 Operator : SM\AJ  
 Sample : K3075-03MSD  
 Misc :  
 ALS Vial : 10 Sample Multiplier: 1

Instrument :  
 ECD\_S  
 ClientSampled :

Integration File signal 1: autoint1.e  
 Integration File signal 2: autoint2.e  
 Quant Time: May 31 02:19:32 2019  
 Quant Method : Z:\pestpcbsrv\HPCHEM1\ECD\_S\Method\PS052019.M  
 Quant Title : 8080.M  
 QLast Update : Tue May 21 04:53:35 2019  
 Response via : Initial Calibration  
 Integrator: ChemStation

Volume Inj. : 2 µl  
 Signal #1 Phase : Rtx-CLPesticides Signal #2 Phase: Rtx-CLPesticides2  
 Signal #1 Info : 30M x 0.32mm x0.5 Signal #2 Info : 30M x 0.32mm x 0.25µm

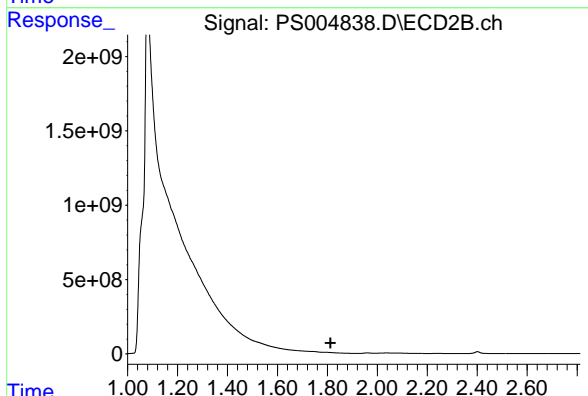




#1 Dalapon

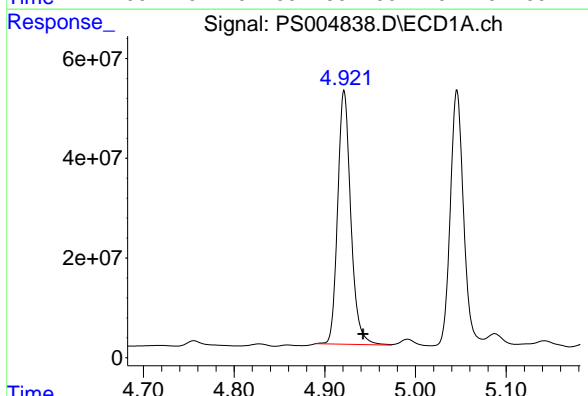
R.T.: 2.102 min  
 Delta R.T.: -0.014 min  
 Response: 188503136  
 Conc: 113.71 ng/ml

Instrument :  
 ECD\_S  
 ClientSampleId :



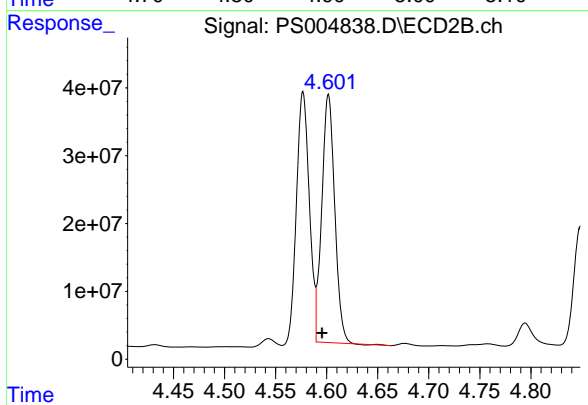
#1 Dalapon

R.T.: 0.000 min  
 Exp R.T. : 1.813 min  
 Response: 0  
 Conc: N.D.



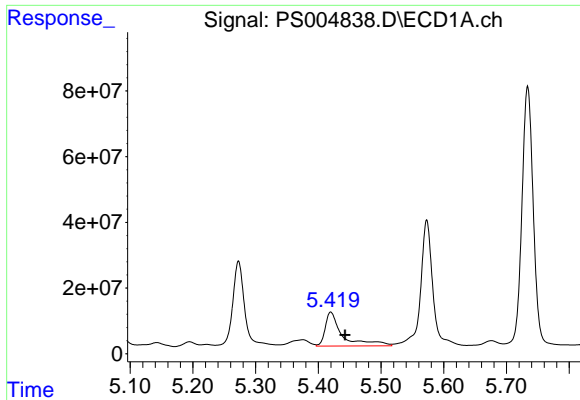
#2 3,5-DICHLOROBENZOIC ACID

R.T.: 4.921 min  
 Delta R.T.: -0.021 min  
 Response: 511316860  
 Conc: 296.49 ng/ml



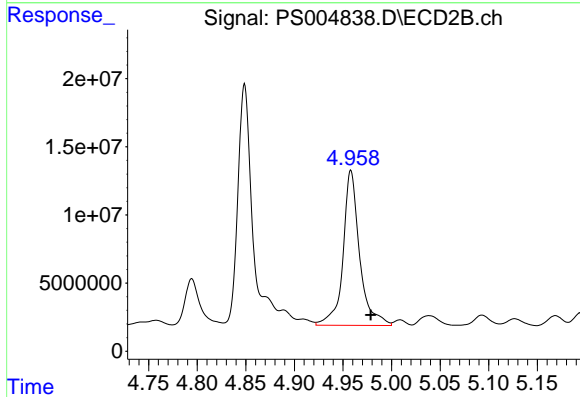
#2 3,5-DICHLOROBENZOIC ACID

R.T.: 4.602 min  
 Delta R.T.: 0.006 min  
 Response: 322723188  
 Conc: 261.92 ng/ml

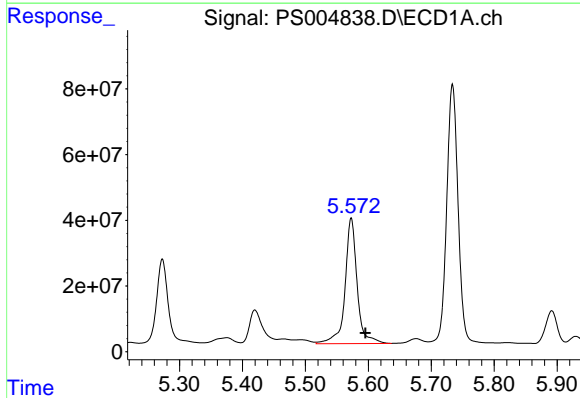


#3 4-Nitrophenol  
R.T.: 5.420 min  
Delta R.T.: -0.023 min  
Response: 195999814  
Conc: 314.35 ng/ml

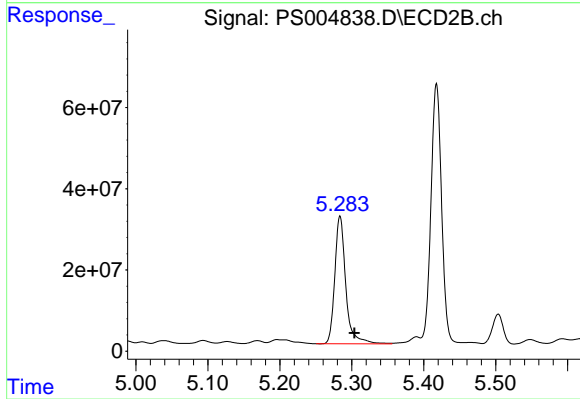
Instrument :  
ECD\_S  
ClientSampleId :



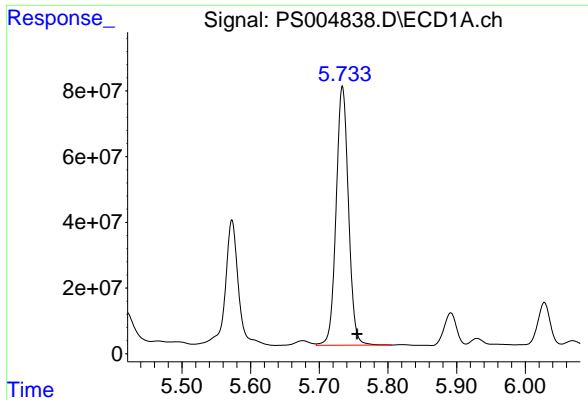
#3 4-Nitrophenol  
R.T.: 4.958 min  
Delta R.T.: -0.020 min  
Response: 135085475  
Conc: 285.04 ng/ml



#4 2,4-DCAA  
R.T.: 5.573 min  
Delta R.T.: -0.022 min  
Response: 510365510  
Conc: 364.09 ng/ml



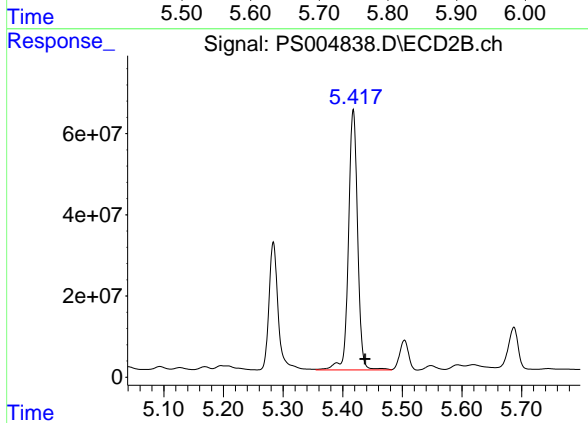
#4 2,4-DCAA  
R.T.: 5.284 min  
Delta R.T.: -0.020 min  
Response: 334644526  
Conc: 346.84 ng/ml



#5 DICAMBA

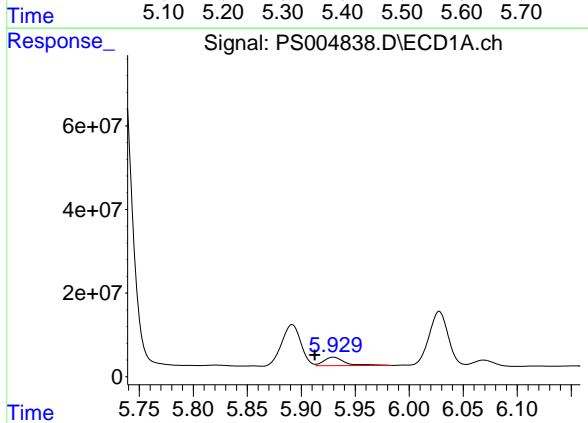
R.T.: 5.734 min  
 Delta R.T.: -0.021 min  
 Response: 984313310  
 Conc: 185.38 ng/ml

Instrument :  
 ECD\_S  
 ClientSampleId :



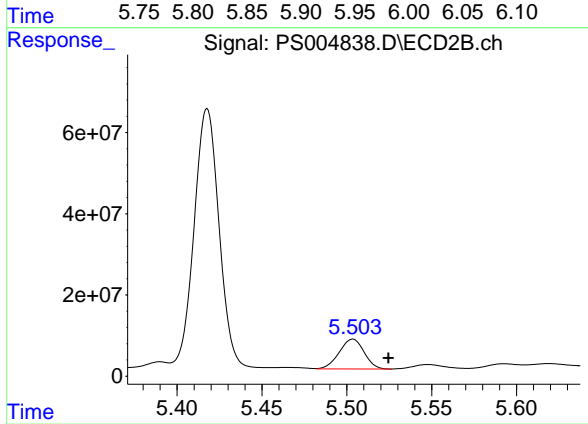
#5 DICAMBA

R.T.: 5.418 min  
 Delta R.T.: -0.020 min  
 Response: 684852560  
 Conc: 185.38 ng/ml



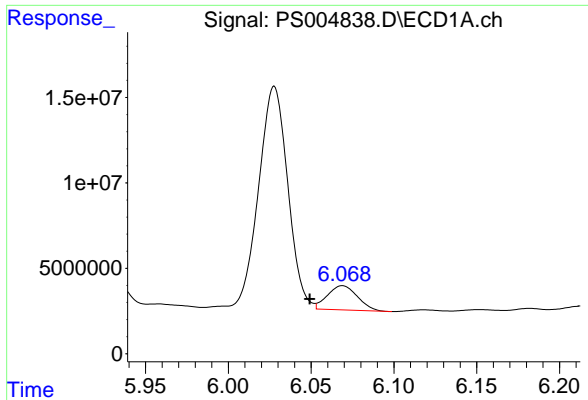
#6 MCPP

R.T.: 5.930 min  
 Delta R.T.: 0.017 min  
 Response: 27258795  
 Conc: 6.55 ug/ml



#6 MCPP

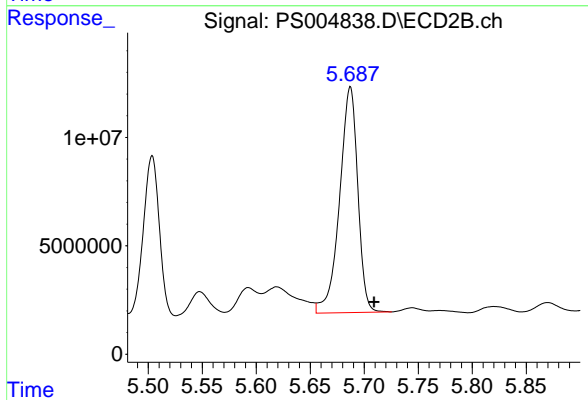
R.T.: 5.503 min  
 Delta R.T.: -0.021 min  
 Response: 74985854  
 Conc: 27.37 ug/ml



#7 MCPA

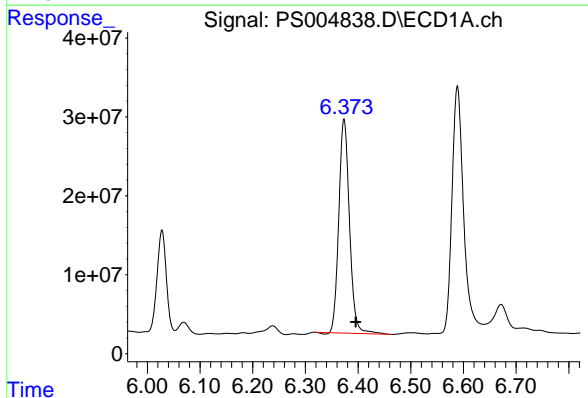
R.T.: 6.069 min  
 Delta R.T.: 0.020 min  
 Response: 17901821  
 Conc: 3.09 ug/ml

Instrument :  
 ECD\_S  
 ClientSampleId :



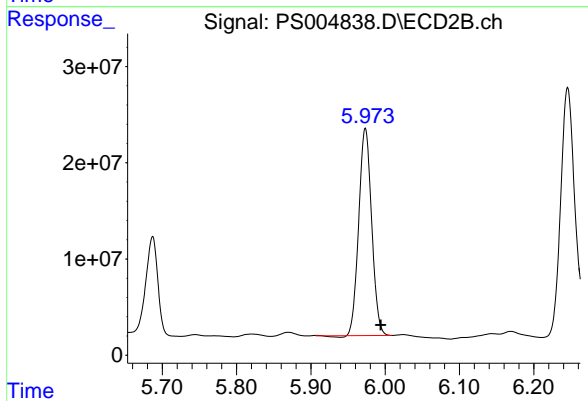
#7 MCPA

R.T.: 5.687 min  
 Delta R.T.: -0.022 min  
 Response: 122158704  
 Conc: 29.86 ug/ml



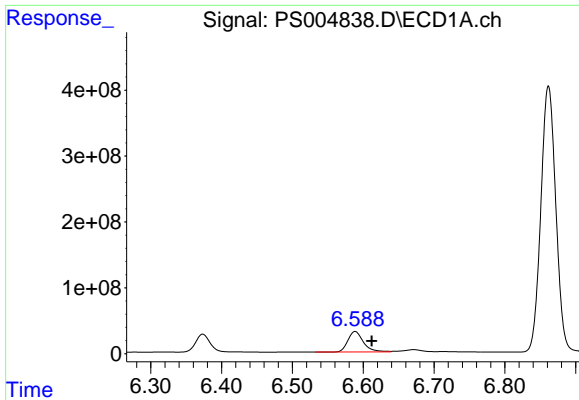
#8 DICHLORPROP

R.T.: 6.373 min  
 Delta R.T.: -0.022 min  
 Response: 381059404  
 Conc: 291.17 ng/ml



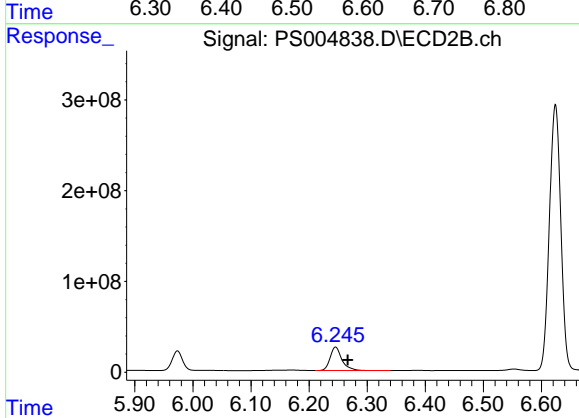
#8 DICHLORPROP

R.T.: 5.973 min  
 Delta R.T.: -0.021 min  
 Response: 259103684  
 Conc: 274.82 ng/ml

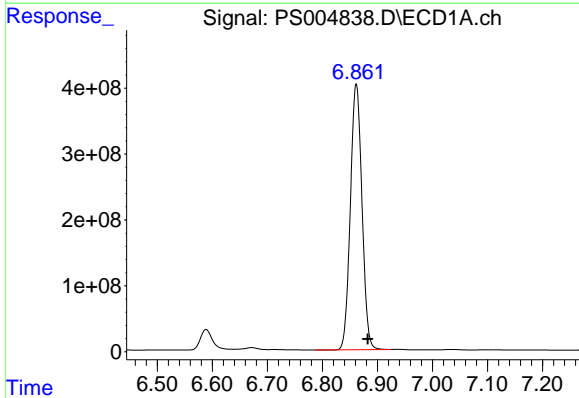


#9 2,4-D  
R.T.: 6.589 min  
Delta R.T.: -0.023 min  
Response: 479533882  
Conc: 350.56 ng/ml

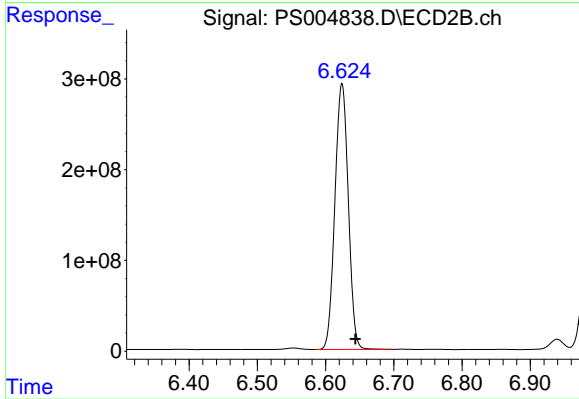
Instrument :  
ECD\_S  
ClientSampleId :



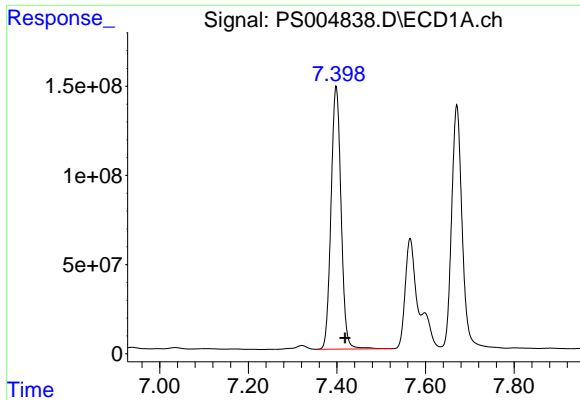
#9 2,4-D  
R.T.: 6.246 min  
Delta R.T.: -0.021 min  
Response: 368955428  
Conc: 341.35 ng/ml



#10 Pentachlorophenol  
R.T.: 6.862 min  
Delta R.T.: -0.020 min  
Response: 5894582679  
Conc: 335.67 ng/ml

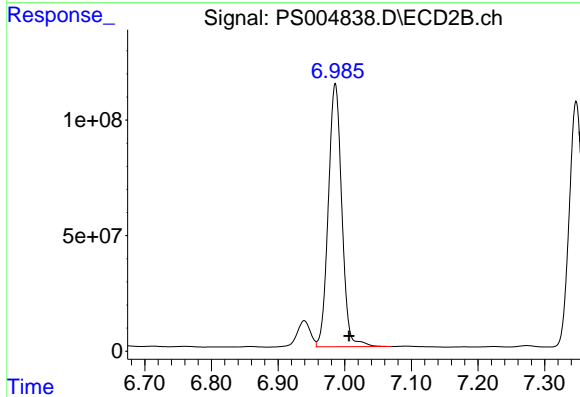


#10 Pentachlorophenol  
R.T.: 6.624 min  
Delta R.T.: -0.020 min  
Response: 3990190929  
Conc: 324.81 ng/ml

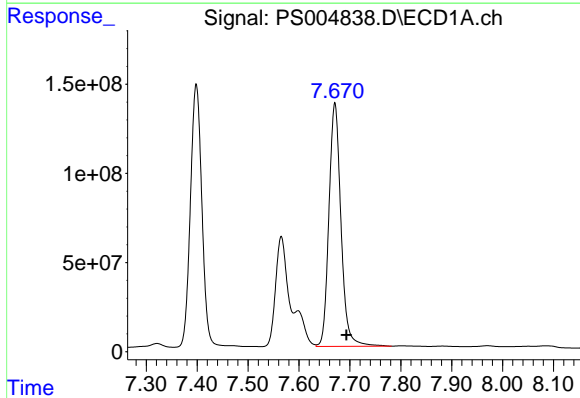


#11 2,4,5-TP (SILVEX)  
 R.T.: 7.398 min  
 Delta R.T.: -0.021 min  
 Response: 2312572527  
 Conc: 315.69 ng/ml

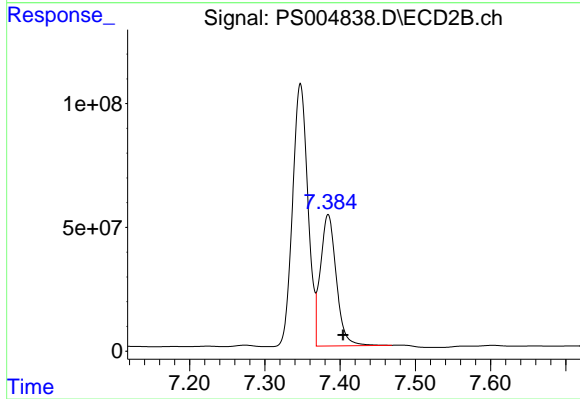
Instrument :  
 ECD\_S  
 ClientSampleId :



#11 2,4,5-TP (SILVEX)  
 R.T.: 6.986 min  
 Delta R.T.: -0.020 min  
 Response: 1597705705  
 Conc: 310.52 ng/ml

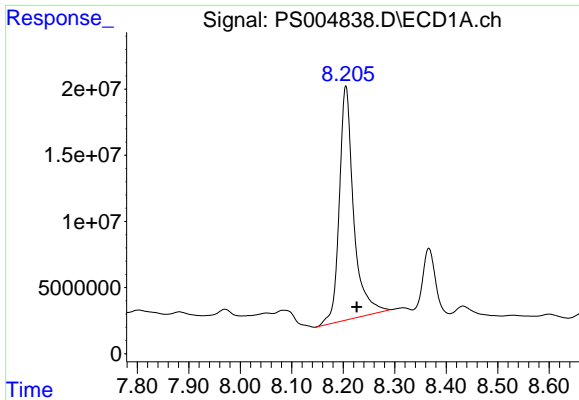


#12 2,4,5-T  
 R.T.: 7.671 min  
 Delta R.T.: -0.023 min  
 Response: 2242239346  
 Conc: 301.07 ng/ml



#12 2,4,5-T  
 R.T.: 7.384 min  
 Delta R.T.: -0.020 min  
 Response: 776093420  
 Conc: 174.14 ng/ml

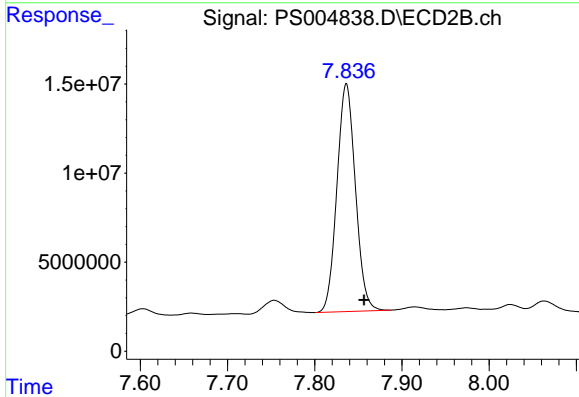




#13 2,4-DB

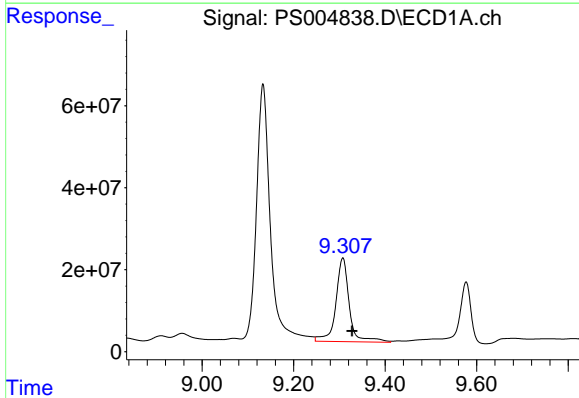
R.T.: 8.205 min  
 Delta R.T.: -0.021 min  
 Response: 341490179  
 Conc: 353.52 ng/ml

Instrument :  
 ECD\_S  
 ClientSampled :



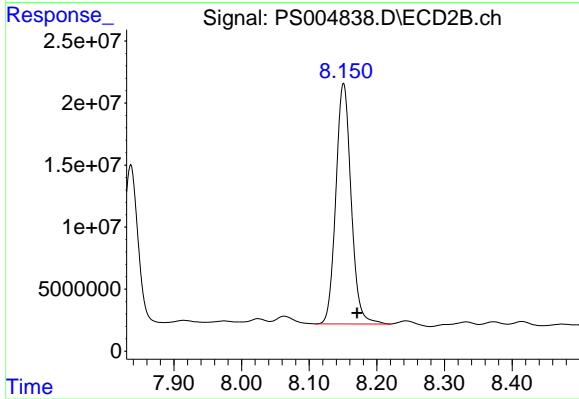
#13 2,4-DB

R.T.: 7.836 min  
 Delta R.T.: -0.020 min  
 Response: 188216717  
 Conc: 287.96 ng/ml



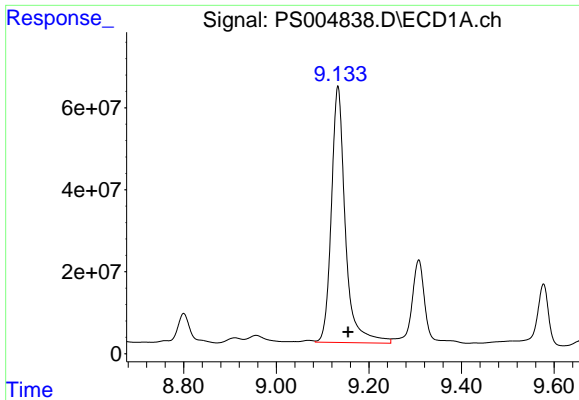
#14 DINOSEB

R.T.: 9.308 min  
 Delta R.T.: -0.021 min  
 Response: 415429286  
 Conc: 70.23 ng/ml



#14 DINOSEB

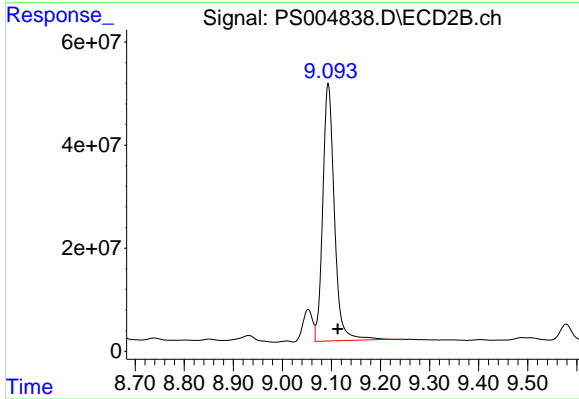
R.T.: 8.151 min  
 Delta R.T.: -0.020 min  
 Response: 303969126  
 Conc: 79.07 ng/ml



#15 Picloram

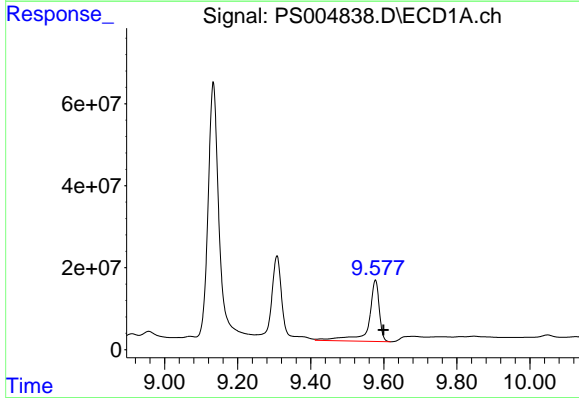
R.T.: 9.133 min  
 Delta R.T.: -0.022 min  
 Response: 1307385372  
 Conc: 125.47 ng/ml

Instrument :  
 ECD\_S  
 ClientSampled :



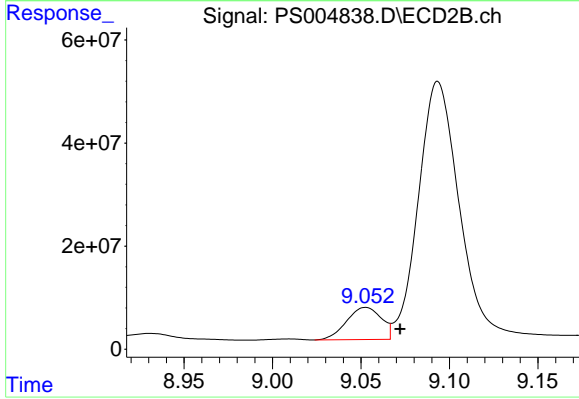
#15 Picloram

R.T.: 9.094 min  
 Delta R.T.: -0.019 min  
 Response: 822429237  
 Conc: 110.24 ng/ml



#16 DCPA

R.T.: 9.577 min  
 Delta R.T.: -0.022 min  
 Response: 299587486  
 Conc: 33.64 ng/ml



#16 DCPA

R.T.: 9.053 min  
 Delta R.T.: -0.019 min  
 Response: 85421408  
 Conc: 13.19 ng/ml