

Data Path : Z:\pestpcbsrv\HPCHEM1\ECD_S\Data\PS060619\
 Data File : PS004964.D
 Signal(s) : Signal #1: ECD1A.ch Signal #2: ECD2B.ch
 Acq On : 06 Jun 2019 19:44
 Operator : SM\AJ
 Sample : K3186-01
 Misc :
 ALS Vial : 25 Sample Multiplier: 1

Instrument :
 ECD_S
 ClientSampleId :

Integration File signal 1: autoint1.e
 Integration File signal 2: autoint2.e
 Quant Time: Jun 07 03:47:01 2019
 Quant Method : Z:\pestpcbsrv\HPCHEM1\ECD_S\Method\PS052019.M
 Quant Title : 8080.M
 QLast Update : Tue May 21 04:53:35 2019
 Response via : Initial Calibration
 Integrator: ChemStation

Volume Inj. : 2 µl
 Signal #1 Phase : Rtx-CLPesticides Signal #2 Phase: Rtx-CLPesticides2
 Signal #1 Info : 30M x 0.32mm x0.5 Signal #2 Info : 30M x 0.32mm x 0.25µm

	Compound	RT#1	RT#2	Resp#1	Resp#2	ng/ml	ng/ml

System Monitoring Compounds							
4) S	2,4-DCAA	5.560	5.272	414.7E6	259.6E6	295.813	269.019
Target Compounds							
2) T	3,5-DICHL...	4.978	4.590	14210970	298.2E6	8.240	242.001 #
3) T	4-Nitroph...	5.484	0.000	28768691	0	46.140	N.D. #
5) T	DICAMBA	5.699	5.493	10753644	16568292	2.025	4.485 #
6) T	MCP	5.915	5.493	8771967	16568292	2.107	6.047 #
7) T	MCPA	6.056	5.664	11437104	49348741	1.975	12.061 #
8) T	DICHLORPROP	6.406	5.962	44844548	18521904	34.266	19.645 #
9) T	2,4-D	6.642	0.000	22816997	0	16.680	N.D. #
10) T	Pentachlo...	0.000	6.615	0	5966628	N.D.	<MDL
11) T	2,4,5-TP ...	7.455	0.000	26704709	0	3.645	N.D. #
13) T	2,4-DB	8.220	7.825	70587269	33218502	73.075	50.822 #
14) T	DINOSEB	0.000	8.137	0	113.3E6	N.D.	29.467
16) T	DCPA	9.565	0.000	39138322	0	4.395	N.D. #

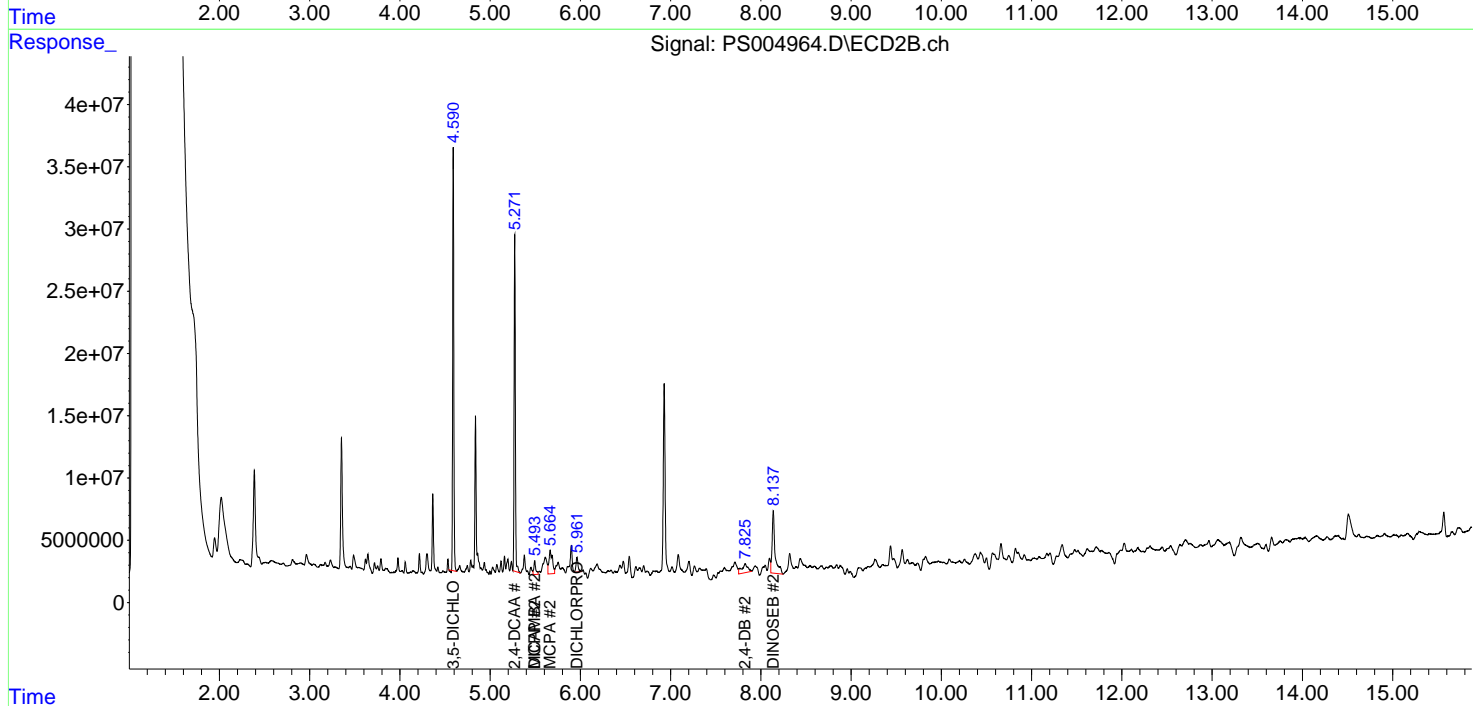
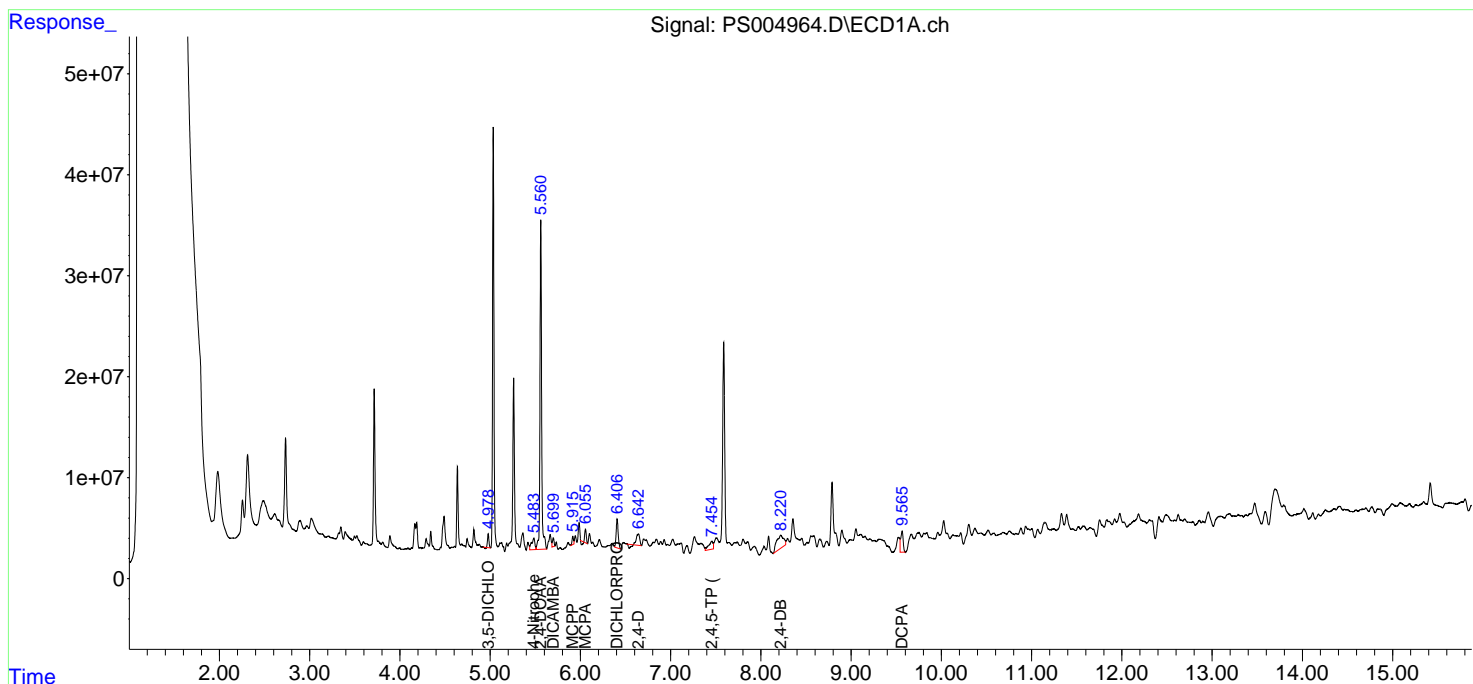
(f)=RT Delta > 1/2 Window (#)=Amounts differ by > 25% (m)=manual int.

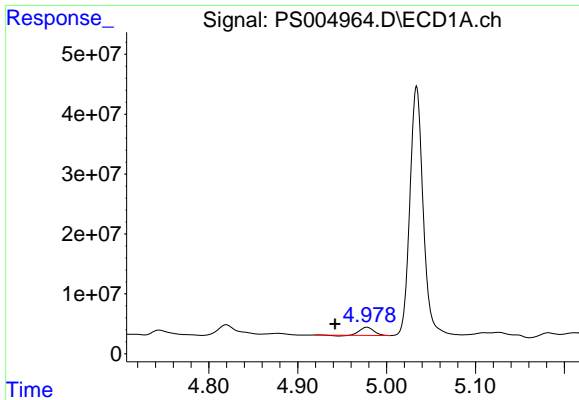
Data Path : Z:\pestpcbsrv\HPCHEM1\ECD_S\Data\PS060619\
 Data File : PS004964.D
 Signal(s) : Signal #1: ECD1A.ch Signal #2: ECD2B.ch
 Acq On : 06 Jun 2019 19:44
 Operator : SM\AJ
 Sample : K3186-01
 Misc :
 ALS Vial : 25 Sample Multiplier: 1

Instrument :
 ECD_S
 ClientSampled :

Integration File signal 1: autoint1.e
 Integration File signal 2: autoint2.e
 Quant Time: Jun 07 03:47:01 2019
 Quant Method : Z:\pestpcbsrv\HPCHEM1\ECD_S\Method\PS052019.M
 Quant Title : 8080.M
 QLast Update : Tue May 21 04:53:35 2019
 Response via : Initial Calibration
 Integrator: ChemStation

Volume Inj. : 2 µl
 Signal #1 Phase : Rtx-CLPesticides Signal #2 Phase: Rtx-CLPesticides2
 Signal #1 Info : 30M x 0.32mm x0.5 Signal #2 Info : 30M x 0.32mm x 0.25µm

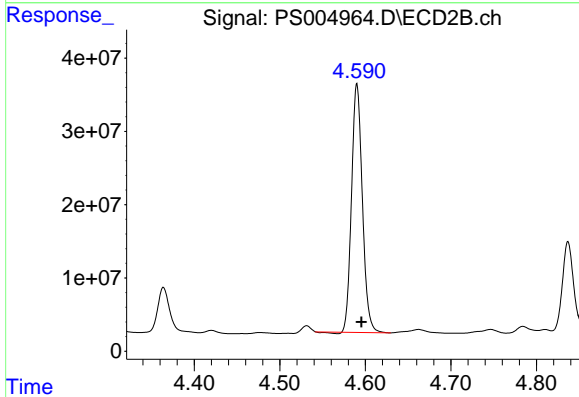




#2 3,5-DICHLOROBENZOIC ACID

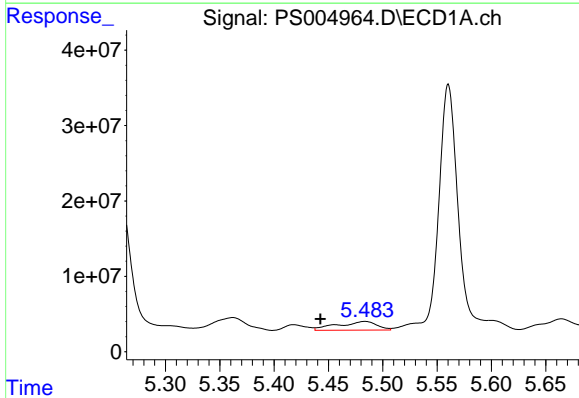
R.T.: 4.978 min
 Delta R.T.: 0.036 min
 Response: 14210970
 Conc: 8.24 ng/ml

Instrument :
 ECD_S
 ClientSampleId :



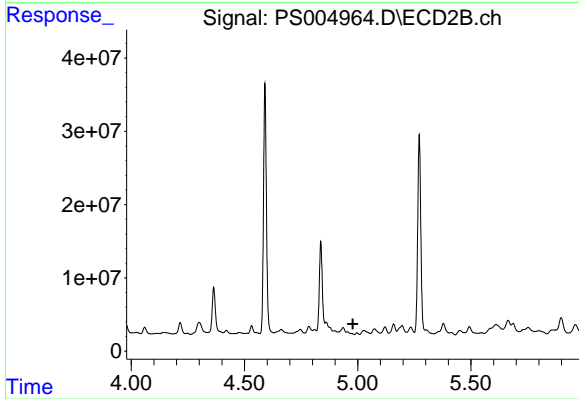
#2 3,5-DICHLOROBENZOIC ACID

R.T.: 4.590 min
 Delta R.T.: -0.005 min
 Response: 298176101
 Conc: 242.00 ng/ml



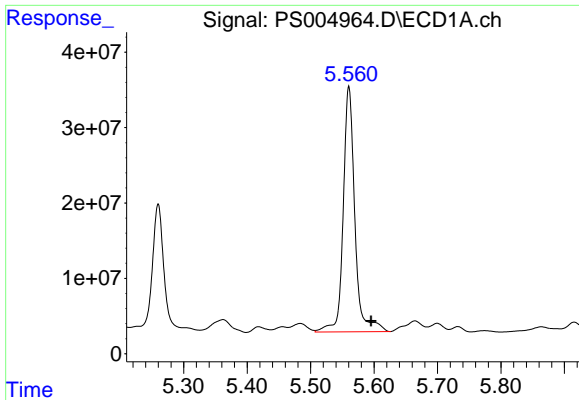
#3 4-Nitrophenol

R.T.: 5.484 min
 Delta R.T.: 0.041 min
 Response: 28768691
 Conc: 46.14 ng/ml



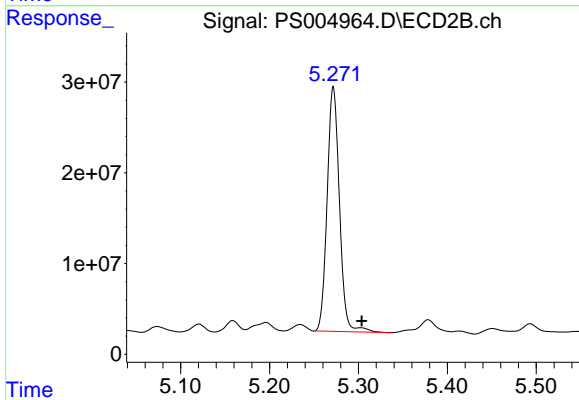
#3 4-Nitrophenol

R.T.: 0.000 min
 Exp R.T. : 4.979 min
 Response: 0
 Conc: N.D.

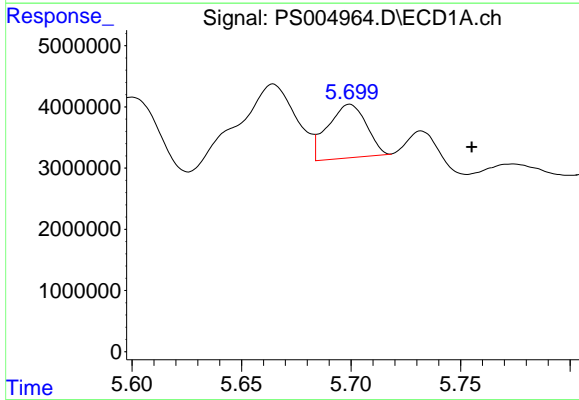


#4 2,4-DCAA
R.T.: 5.560 min
Delta R.T.: -0.035 min
Response: 414657868
Conc: 295.81 ng/ml

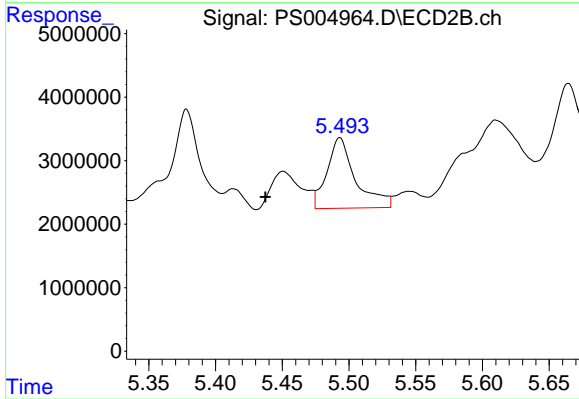
Instrument :
ECD_S
ClientSampled :



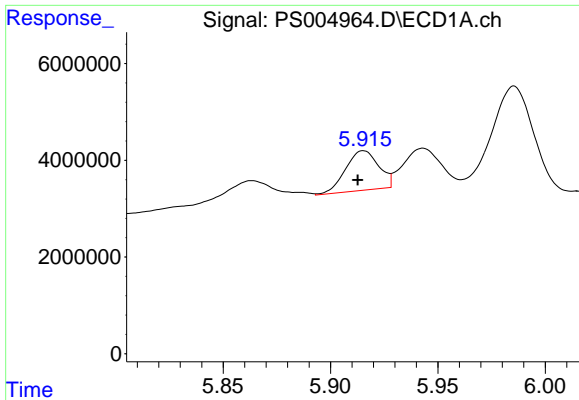
#4 2,4-DCAA
R.T.: 5.272 min
Delta R.T.: -0.032 min
Response: 259559411
Conc: 269.02 ng/ml



#5 DICAMBA
R.T.: 5.699 min
Delta R.T.: -0.056 min
Response: 10753644
Conc: 2.03 ng/ml

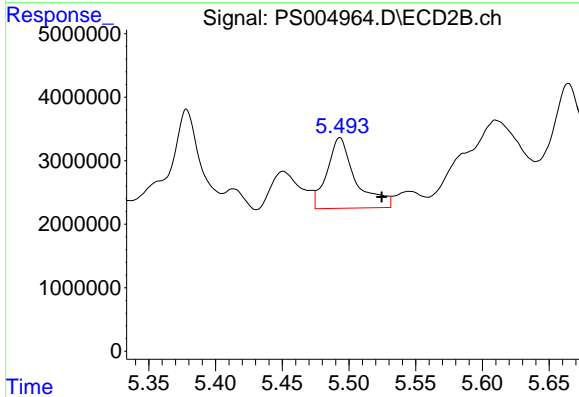


#5 DICAMBA
R.T.: 5.493 min
Delta R.T.: 0.056 min
Response: 16568292
Conc: 4.48 ng/ml

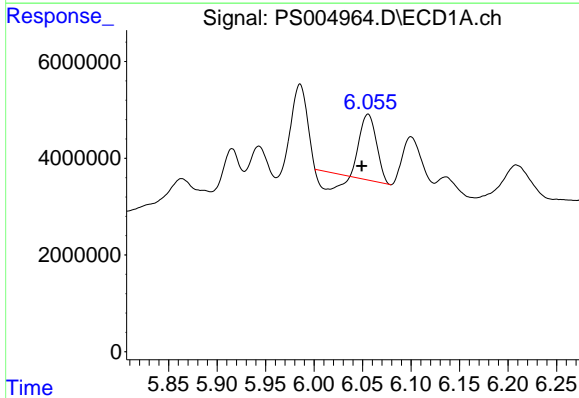


#6 MCPP
 R.T.: 5.915 min
 Delta R.T.: 0.003 min
 Response: 8771967
 Conc: 2.11 ug/ml

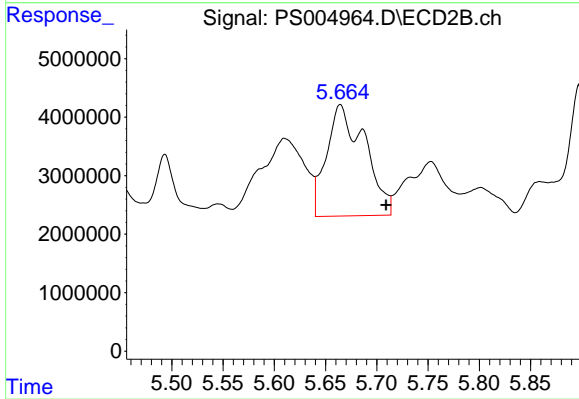
Instrument :
 ECD_S
 ClientSampleId :



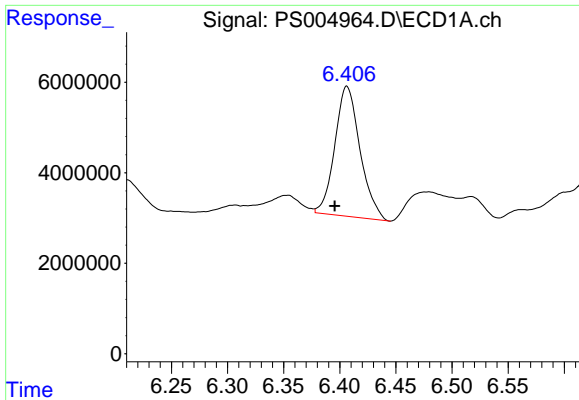
#6 MCPP
 R.T.: 5.493 min
 Delta R.T.: -0.031 min
 Response: 16568292
 Conc: 6.05 ug/ml



#7 MCPA
 R.T.: 6.056 min
 Delta R.T.: 0.006 min
 Response: 11437104
 Conc: 1.97 ug/ml

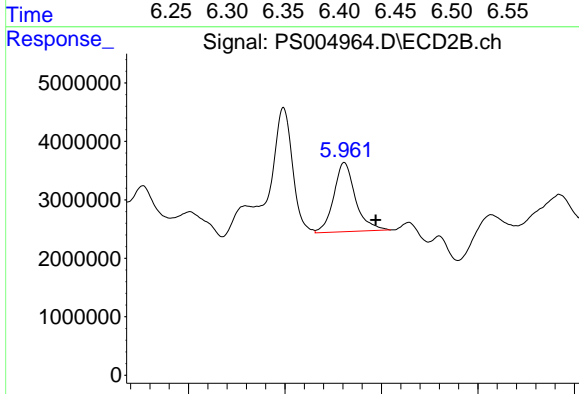


#7 MCPA
 R.T.: 5.664 min
 Delta R.T.: -0.045 min
 Response: 49348741
 Conc: 12.06 ug/ml

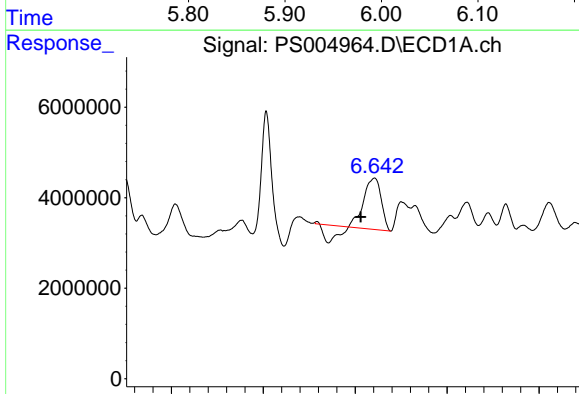


#8 DICHLORPROP
 R.T.: 6.406 min
 Delta R.T.: 0.011 min
 Response: 44844548
 Conc: 34.27 ng/ml

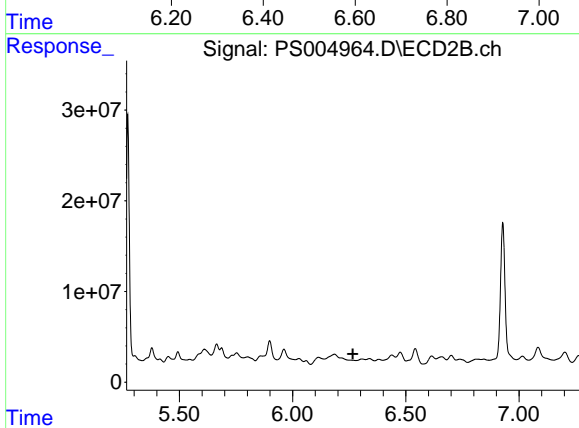
Instrument :
 ECD_S
 ClientSampleId :



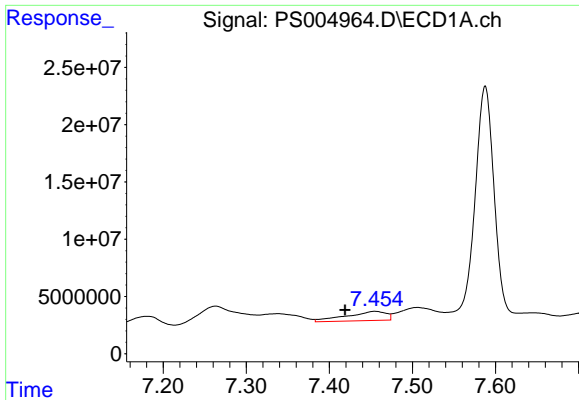
#8 DICHLORPROP
 R.T.: 5.962 min
 Delta R.T.: -0.033 min
 Response: 18521904
 Conc: 19.65 ng/ml



#9 2,4-D
 R.T.: 6.642 min
 Delta R.T.: 0.030 min
 Response: 22816997
 Conc: 16.68 ng/ml

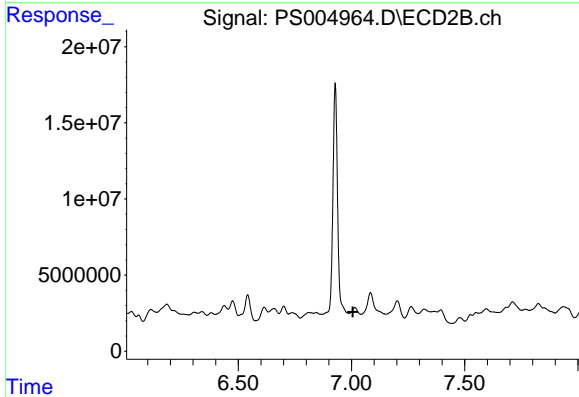


#9 2,4-D
 R.T.: 0.000 min
 Exp R.T. : 6.266 min
 Response: 0
 Conc: N.D.

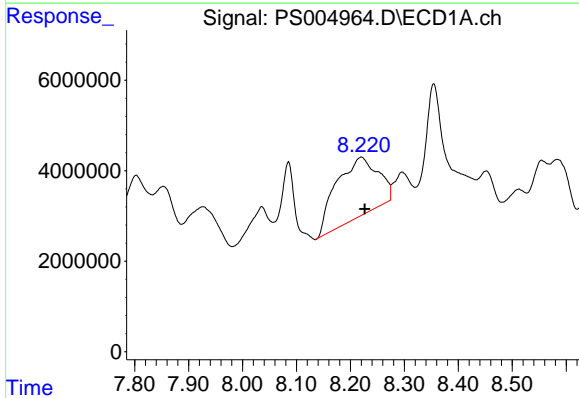


#11 2,4,5-TP (SILVEX)
 R.T.: 7.455 min
 Delta R.T.: 0.036 min
 Response: 26704709
 Conc: 3.65 ng/ml

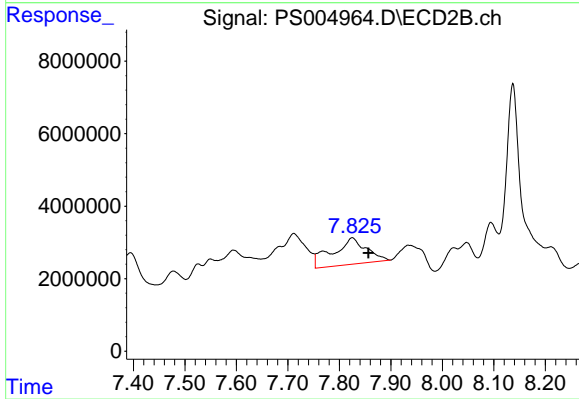
Instrument :
 ECD_S
 ClientSampled :



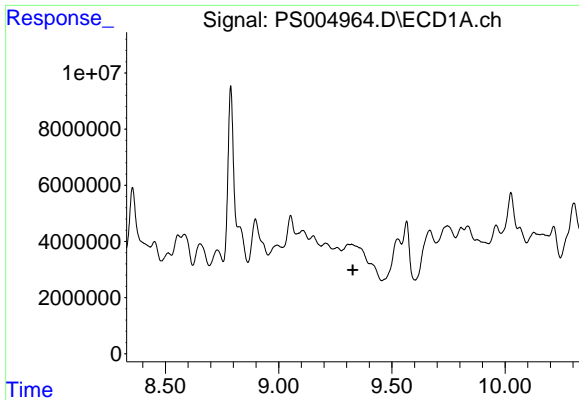
#11 2,4,5-TP (SILVEX)
 R.T.: 0.000 min
 Exp R.T. : 7.006 min
 Response: 0
 Conc: N.D.



#13 2,4-DB
 R.T.: 8.220 min
 Delta R.T.: -0.006 min
 Response: 70587269
 Conc: 73.07 ng/ml



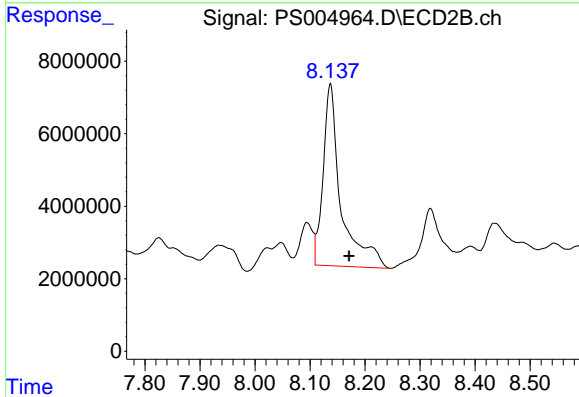
#13 2,4-DB
 R.T.: 7.825 min
 Delta R.T.: -0.031 min
 Response: 33218502
 Conc: 50.82 ng/ml



#14 DINOSEB

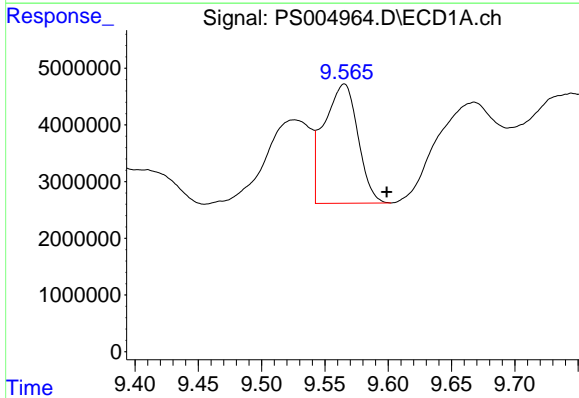
R.T.: 0.000 min
 Exp R.T.: 9.328 min
 Response: 0
 Conc: N.D.

Instrument :
 ECD_S
 ClientSampled :



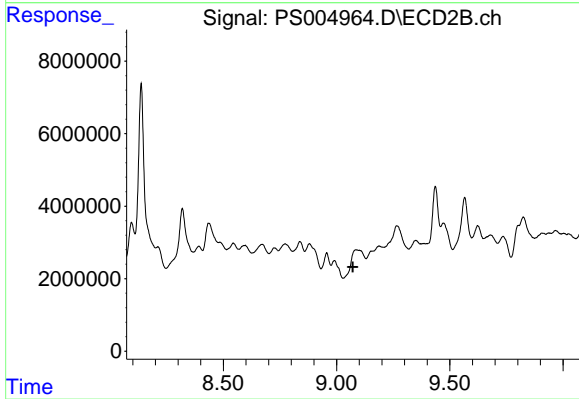
#14 DINOSEB

R.T.: 8.137 min
 Delta R.T.: -0.034 min
 Response: 113275869
 Conc: 29.47 ng/ml



#16 DCPA

R.T.: 9.565 min
 Delta R.T.: -0.034 min
 Response: 39138322
 Conc: 4.39 ng/ml



#16 DCPA

R.T.: 0.000 min
 Exp R.T.: 9.072 min
 Response: 0
 Conc: N.D.