

Data Path : Z:\pestpcbsrv\HPCHEM1\ECD_S\Data\PS061418\
 Data File : PS000348.D
 Signal(s) : Signal #1: ECD1A.ch Signal #2: ECD2B.ch
 Acq On : 14 Jun 2018 14:52
 Operator : UA
 Sample : J3440-01MS
 Misc :
 ALS Vial : 11 Sample Multiplier: 1

Instrument :
 ECD_S
 ClientSampleId :

Integration File signal 1: autoint1.e
 Integration File signal 2: autoint2.e
 Quant Time: Jun 15 00:56:19 2018
 Quant Method : \\TERASTORAGE\Terastorage\pestpcbsrv\HPCHEM1\ECD_S\Method\PS052118.M
 Quant Title : 8080.M
 QLast Update : Thu May 31 04:46:50 2018
 Response via : Initial Calibration
 Integrator: ChemStation

Volume Inj. : 2 µl
 Signal #1 Phase : Rtx-CLPesticides Signal #2 Phase: Rtx-CLPesticides2
 Signal #1 Info : 30M x 0.32mm x0.5 Signal #2 Info : 30M x 0.32mm x 0.25µm

	Compound	RT#1	RT#2	Resp#1	Resp#2	ng/ml	ng/ml

System Monitoring Compounds							
4) S	2,4-DCAA	11.849	11.222	46975331	85492448	133.046	272.181 #
Target Compounds							
1) T	Dalapon	3.200	2.578	94283388	99458962	197.235	251.799 #
2) T	3,5-DICHL...	10.263	9.306	159.9E6	6318527	298.989	14.311 #
3) T	4-Nitroph...	0.000	10.346	0	18002142	N.D.	96.664 #
5) T	DICAMBA	12.169	11.512	422.3E6	275.6E6	322.903	249.106
6) T	MCPD	0.000	11.732	0	17942017	N.D.	19.386 #
7) T	MCPA	12.754	0.000	44201047	0	23.588	N.D. #
8) T	DICHLORPROP	13.362	12.635	113.2E6	93504940	328.100	323.644
9) T	2,4-D	13.719	13.107	149.8E6	137.4E6	332.095	357.360
10) T	Pentachlo...	14.117	13.671	1393.6E6	1252.6E6	278.829	284.334
11) T	2,4,5-TP ...	14.984	14.278	606.4E6	556.3E6	305.952	323.406
12) T	2,4,5-T	15.381	14.810	594.5E6	532.4E6	303.188	323.022
13) T	2,4-DB	16.136	15.498	93967984	72231734	345.599	340.512
14) T	DINOSEB	17.647	15.930	11433343	7316319	7.813	5.915
15) T	Picloram	17.403	17.175	830.4E6	716.6E6	317.482	336.328
16) T	DCPA	17.988	17.118	495.2E6	510.3E6	204.521	246.918

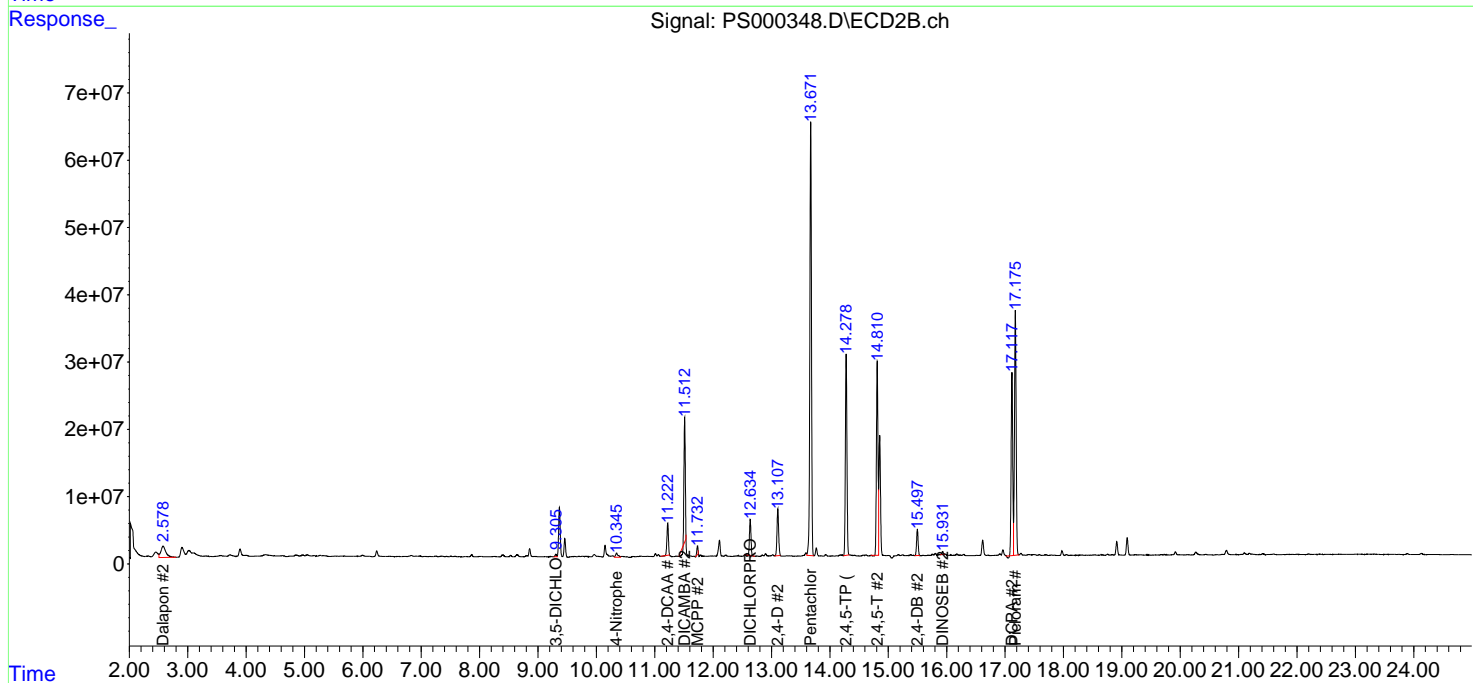
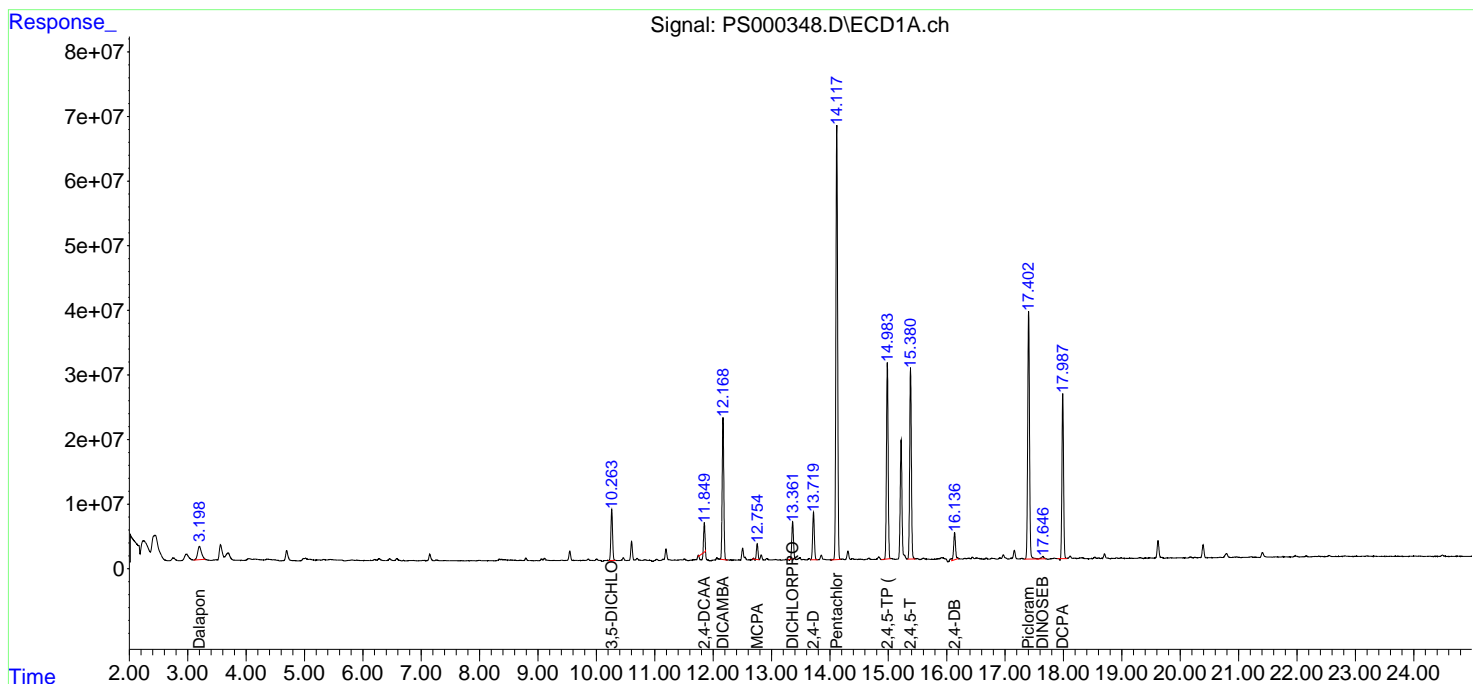
(f)=RT Delta > 1/2 Window (#)=Amounts differ by > 25% (m)=manual int.

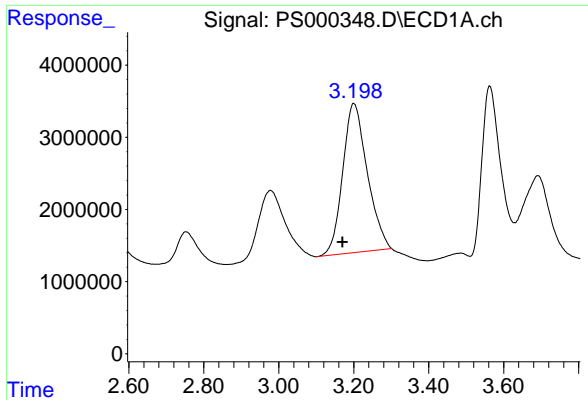
Data Path : Z:\pestpcbsrv\HPCHEM1\ECD_S\Data\PS061418\
 Data File : PS000348.D
 Signal(s) : Signal #1: ECD1A.ch Signal #2: ECD2B.ch
 Acq On : 14 Jun 2018 14:52
 Operator : UA
 Sample : J3440-01MS
 Misc :
 ALS Vial : 11 Sample Multiplier: 1

Instrument :
 ECD_S
 ClientSampled :

Integration File signal 1: autoint1.e
 Integration File signal 2: autoint2.e
 Quant Time: Jun 15 00:56:19 2018
 Quant Method : \\TERASTORAGE\Terastorage\pestpcbsrv\HPCHEM1\ECD_S\Method\PS052118.M
 Quant Title : 8080.M
 QLast Update : Thu May 31 04:46:50 2018
 Response via : Initial Calibration
 Integrator: ChemStation

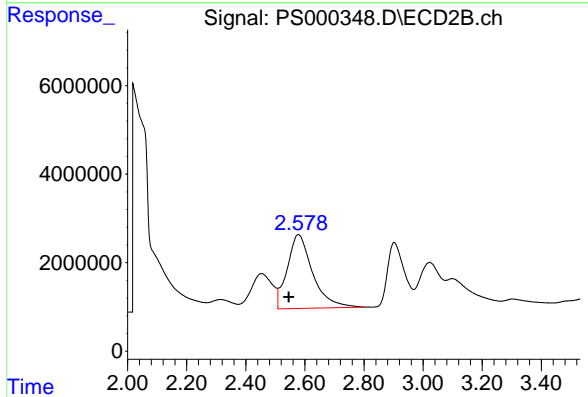
Volume Inj. : 2 µl
 Signal #1 Phase : Rtx-CLPesticides Signal #2 Phase: Rtx-CLPesticides2
 Signal #1 Info : 30M x 0.32mm x0.5 Signal #2 Info : 30M x 0.32mm x 0.25µm



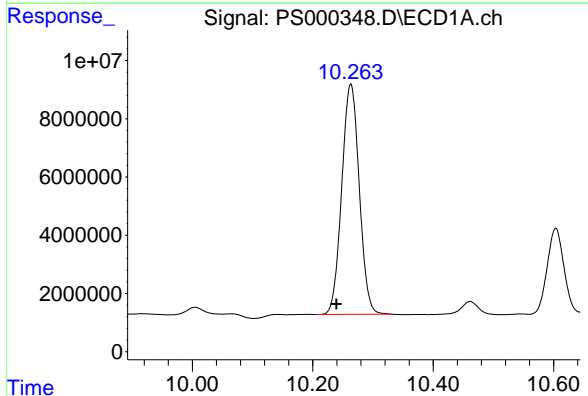


#1 Dalapon
 R.T.: 3.200 min
 Delta R.T.: 0.030 min
 Response: 94283388
 Conc: 197.24 ng/ml

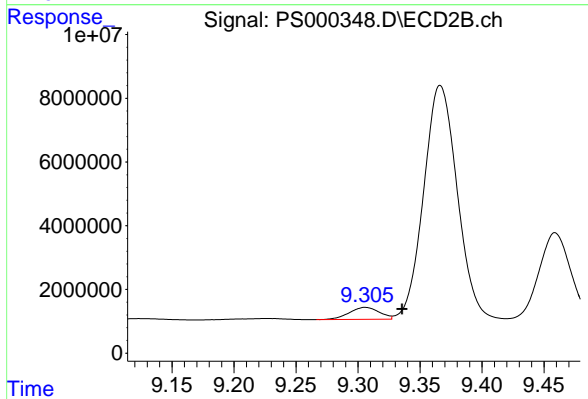
Instrument :
 ECD_S
 ClientSampleId :



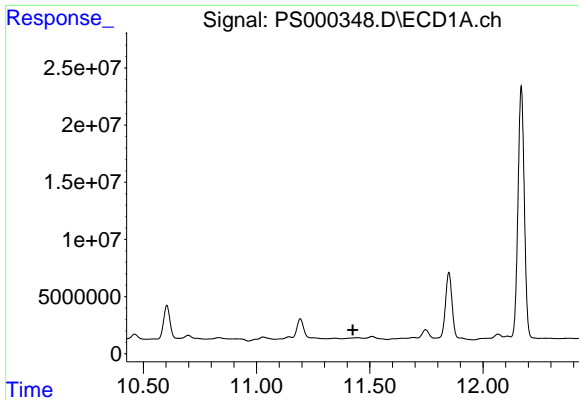
#1 Dalapon
 R.T.: 2.578 min
 Delta R.T.: 0.033 min
 Response: 99458962
 Conc: 251.80 ng/ml



#2 3,5-DICHLOROBENZOIC ACID
 R.T.: 10.263 min
 Delta R.T.: 0.024 min
 Response: 159924015
 Conc: 298.99 ng/ml



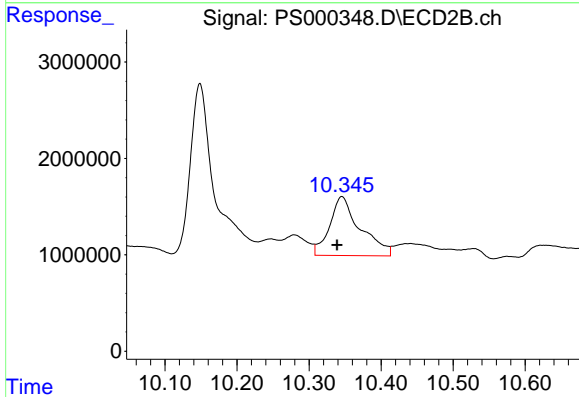
#2 3,5-DICHLOROBENZOIC ACID
 R.T.: 9.306 min
 Delta R.T.: -0.030 min
 Response: 6318527
 Conc: 14.31 ng/ml



#3 4-Nitrophenol

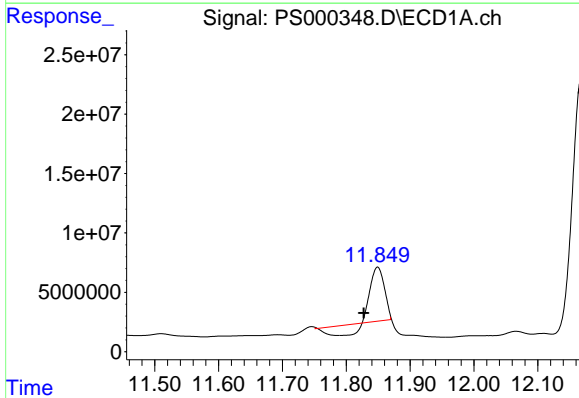
R.T.: 0.000 min
 Exp R.T.: 11.425 min
 Response: 0
 Conc: N.D.

Instrument :
 ECD_S
 ClientSampled :



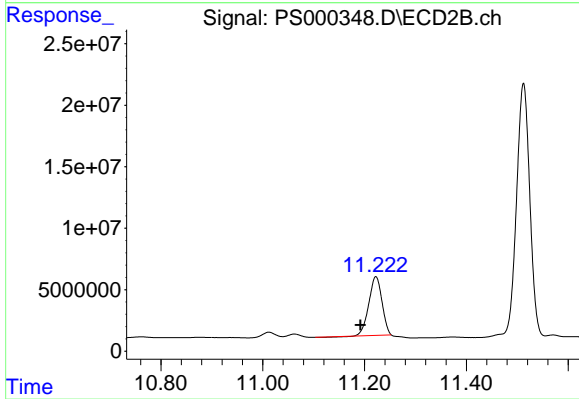
#3 4-Nitrophenol

R.T.: 10.346 min
 Delta R.T.: 0.007 min
 Response: 18002142
 Conc: 96.66 ng/ml



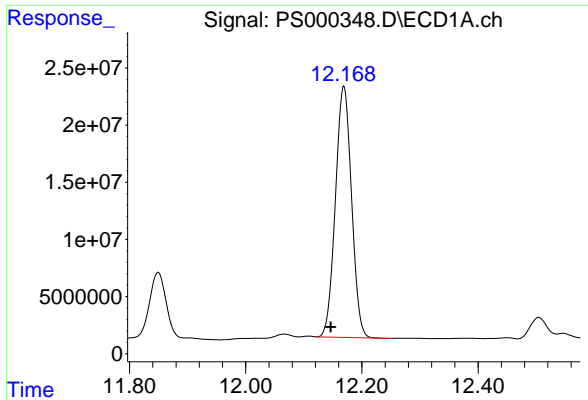
#4 2,4-DCAA

R.T.: 11.849 min
 Delta R.T.: 0.022 min
 Response: 46975331
 Conc: 133.05 ng/ml



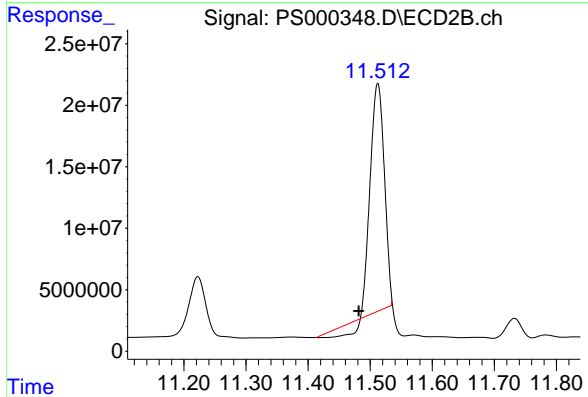
#4 2,4-DCAA

R.T.: 11.222 min
 Delta R.T.: 0.031 min
 Response: 85492448
 Conc: 272.18 ng/ml

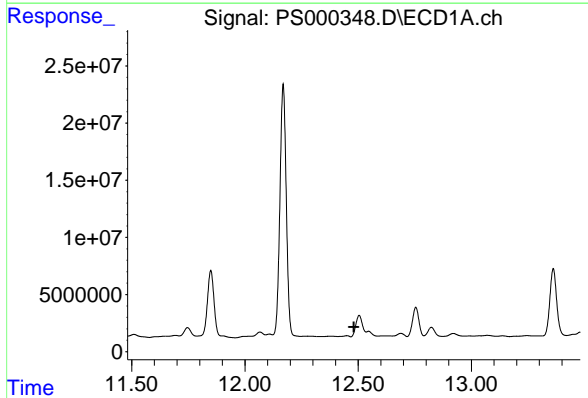


#5 DICAMBA
 R.T.: 12.169 min
 Delta R.T.: 0.022 min
 Response: 422331218
 Conc: 322.90 ng/ml

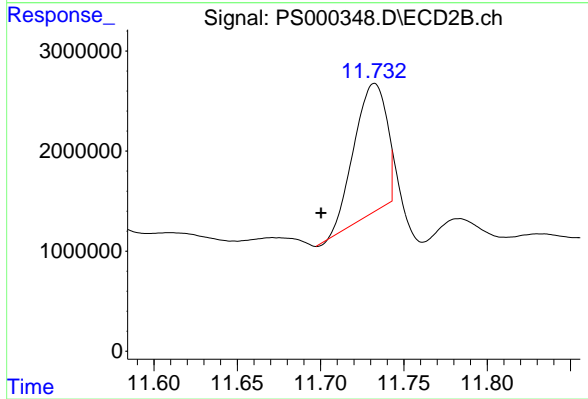
Instrument :
 ECD_S
 ClientSampleId :



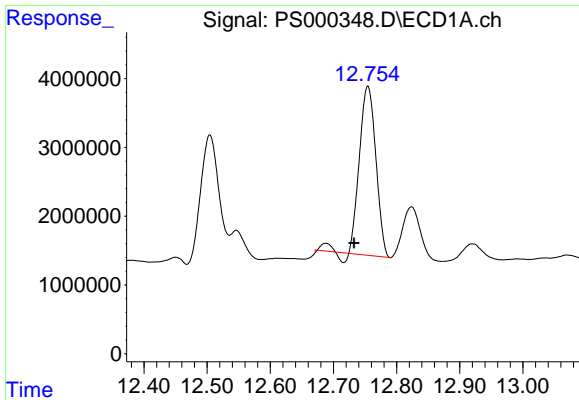
#5 DICAMBA
 R.T.: 11.512 min
 Delta R.T.: 0.030 min
 Response: 275593648
 Conc: 249.11 ng/ml



#6 MCPP
 R.T.: 0.000 min
 Exp R.T. : 12.482 min
 Response: 0
 Conc: N.D.



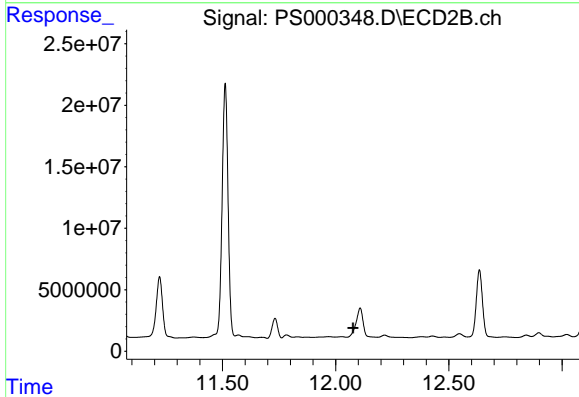
#6 MCPP
 R.T.: 11.732 min
 Delta R.T.: 0.032 min
 Response: 17942017
 Conc: 19.39 ug/ml



#7 MCPA

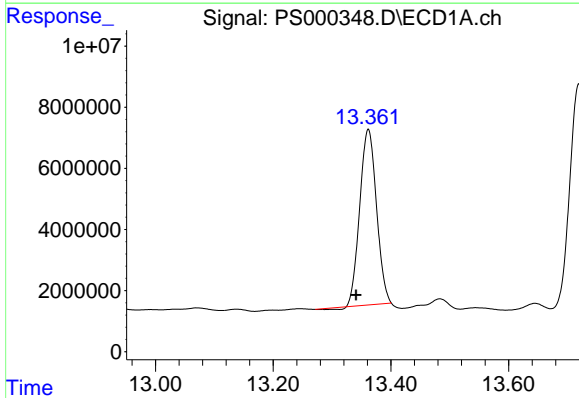
R.T.: 12.754 min
 Delta R.T.: 0.022 min
 Response: 44201047
 Conc: 23.59 ug/ml

Instrument :
 ECD_S
 ClientSampled :



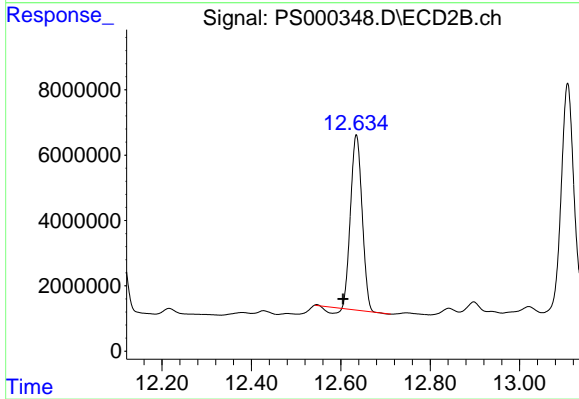
#7 MCPA

R.T.: 0.000 min
 Exp R.T. : 12.077 min
 Response: 0
 Conc: N.D.



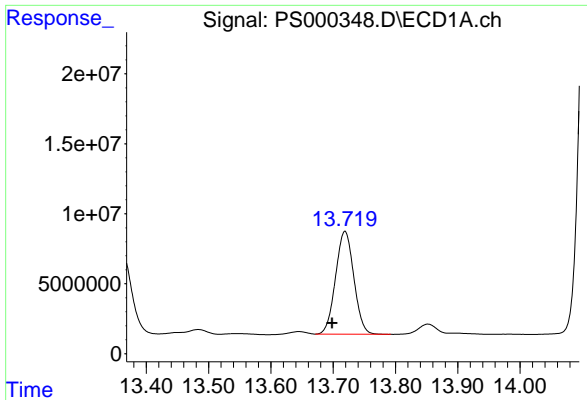
#8 DICHLORPROP

R.T.: 13.362 min
 Delta R.T.: 0.021 min
 Response: 113207280
 Conc: 328.10 ng/ml



#8 DICHLORPROP

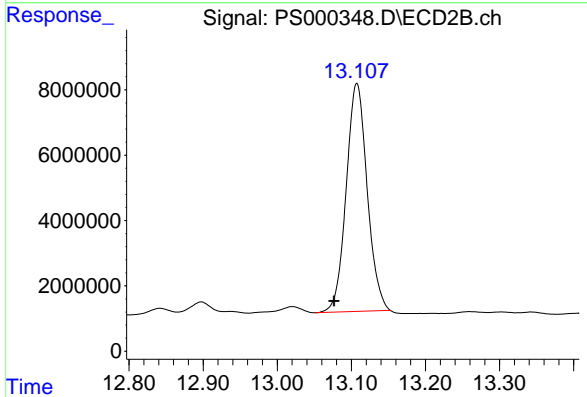
R.T.: 12.635 min
 Delta R.T.: 0.030 min
 Response: 93504940
 Conc: 323.64 ng/ml



#9 2,4-D

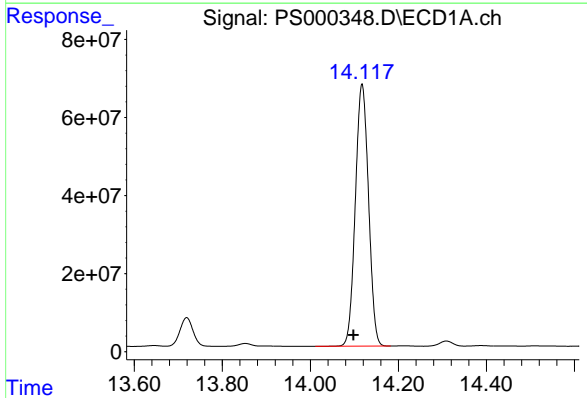
R.T.: 13.719 min
 Delta R.T.: 0.021 min
 Response: 149772550
 Conc: 332.09 ng/ml

Instrument :
 ECD_S
 ClientSampled :



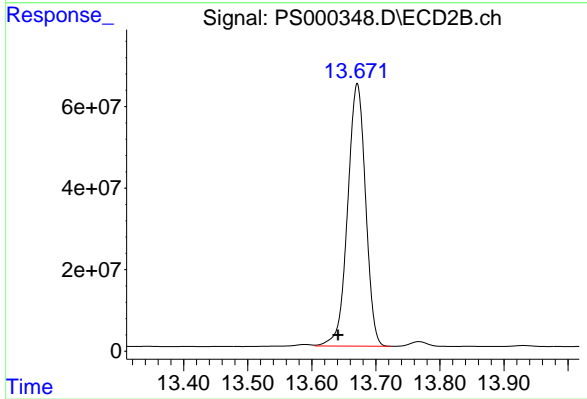
#9 2,4-D

R.T.: 13.107 min
 Delta R.T.: 0.031 min
 Response: 137382561
 Conc: 357.36 ng/ml



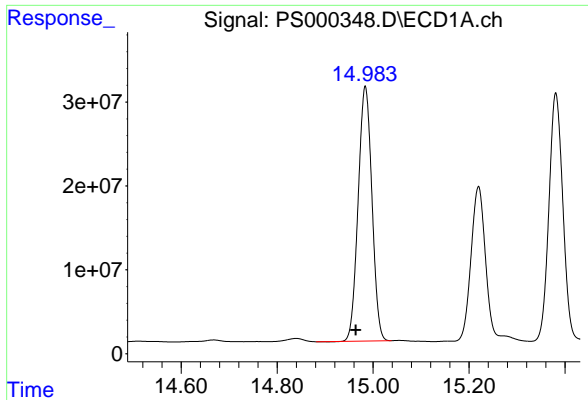
#10 Pentachlorophenol

R.T.: 14.117 min
 Delta R.T.: 0.020 min
 Response: 1393619866
 Conc: 278.83 ng/ml



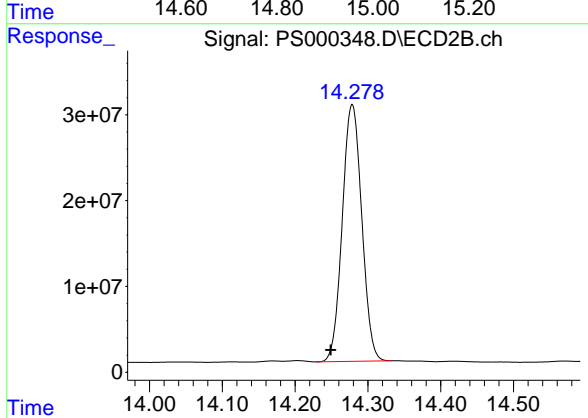
#10 Pentachlorophenol

R.T.: 13.671 min
 Delta R.T.: 0.030 min
 Response: 1252593514
 Conc: 284.33 ng/ml

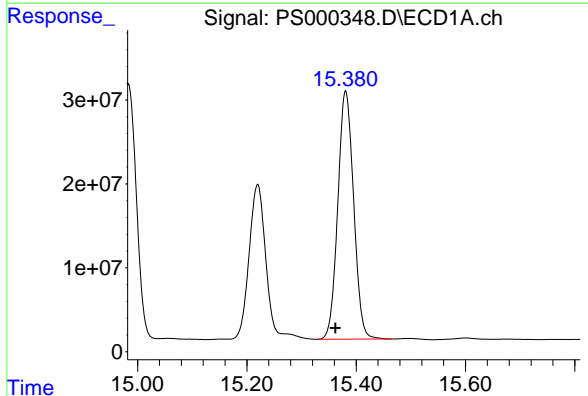


#11 2,4,5-TP (SILVEX)
 R.T.: 14.984 min
 Delta R.T.: 0.020 min
 Response: 606436014
 Conc: 305.95 ng/ml

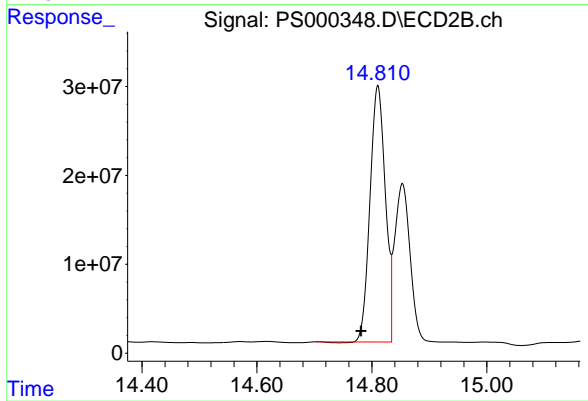
Instrument :
 ECD_S
 ClientSampleId :



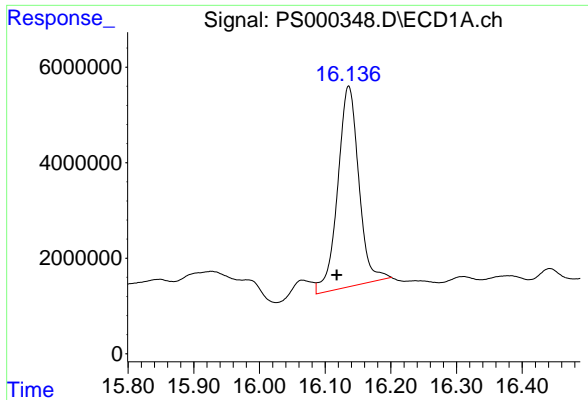
#11 2,4,5-TP (SILVEX)
 R.T.: 14.278 min
 Delta R.T.: 0.030 min
 Response: 556278326
 Conc: 323.41 ng/ml



#12 2,4,5-T
 R.T.: 15.381 min
 Delta R.T.: 0.018 min
 Response: 594491352
 Conc: 303.19 ng/ml

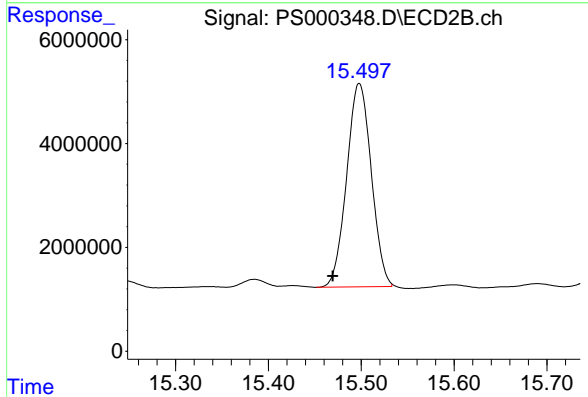


#12 2,4,5-T
 R.T.: 14.810 min
 Delta R.T.: 0.029 min
 Response: 532399124
 Conc: 323.02 ng/ml

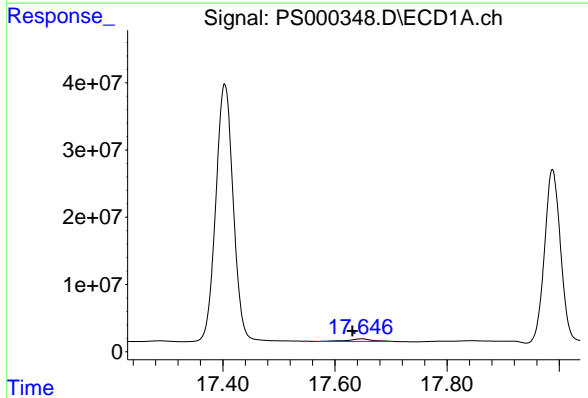


#13 2,4-DB
 R.T.: 16.136 min
 Delta R.T.: 0.018 min
 Response: 93967984
 Conc: 345.60 ng/ml

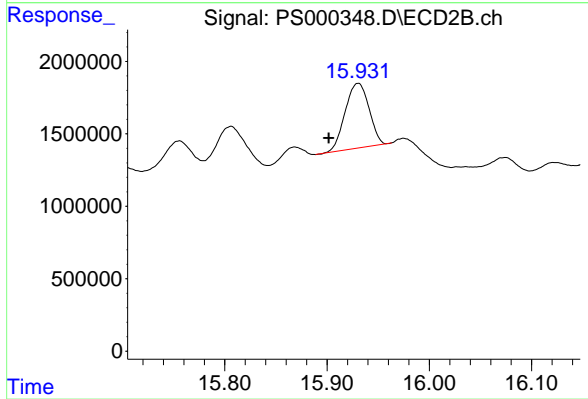
Instrument :
 ECD_S
 ClientSampled :



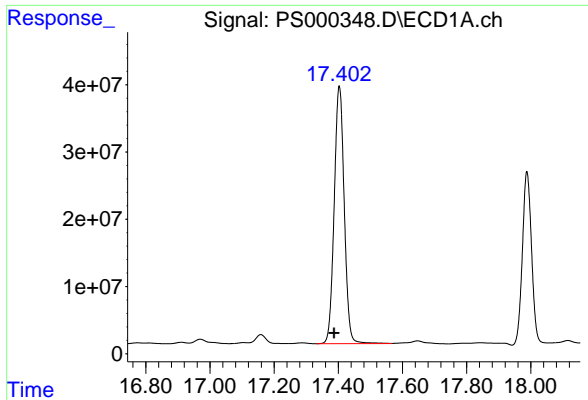
#13 2,4-DB
 R.T.: 15.498 min
 Delta R.T.: 0.029 min
 Response: 72231734
 Conc: 340.51 ng/ml



#14 DINOSEB
 R.T.: 17.647 min
 Delta R.T.: 0.016 min
 Response: 11433343
 Conc: 7.81 ng/ml



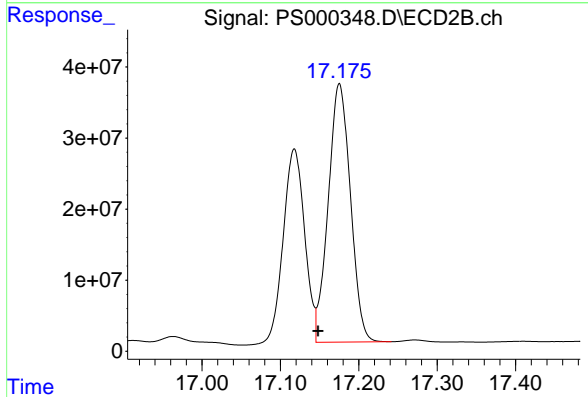
#14 DINOSEB
 R.T.: 15.930 min
 Delta R.T.: 0.029 min
 Response: 7316319
 Conc: 5.92 ng/ml



#15 Picloram

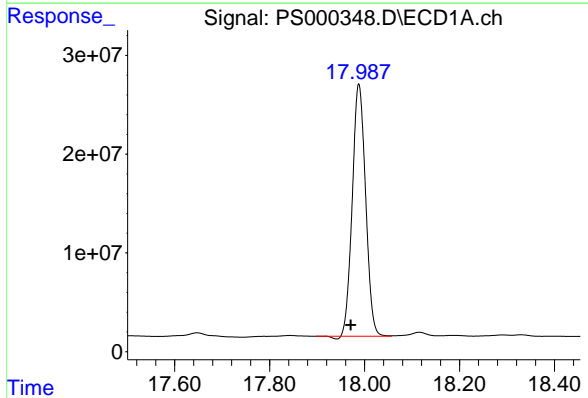
R.T.: 17.403 min
 Delta R.T.: 0.017 min
 Response: 830442255
 Conc: 317.48 ng/ml

Instrument :
 ECD_S
 ClientSampleId :



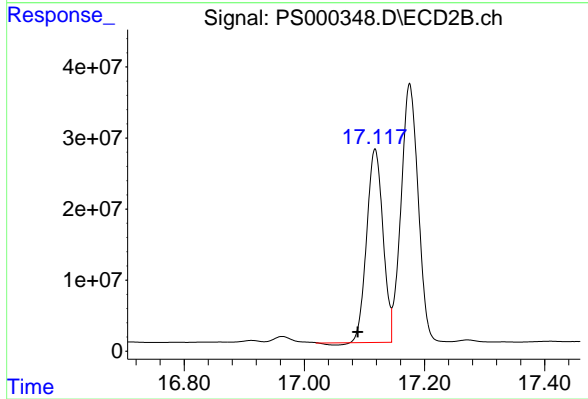
#15 Picloram

R.T.: 17.175 min
 Delta R.T.: 0.027 min
 Response: 716565466
 Conc: 336.33 ng/ml



#16 DCPA

R.T.: 17.988 min
 Delta R.T.: 0.017 min
 Response: 495177140
 Conc: 204.52 ng/ml



#16 DCPA

R.T.: 17.118 min
 Delta R.T.: 0.029 min
 Response: 510281495
 Conc: 246.92 ng/ml