

Data Path : Z:\pestpcbsrv\HPCHEM1\ECD_S\Data\PS061418\
 Data File : PS000352.D
 Signal(s) : Signal #1: ECD1A.ch Signal #2: ECD2B.ch
 Acq On : 14 Jun 2018 17:57
 Operator : UA
 Sample : PB110193BL
 Misc :
 ALS Vial : 13 Sample Multiplier: 1

Instrument :
 ECD_S
 ClientSampleId :

Integration File signal 1: autoint1.e
 Integration File signal 2: autoint2.e
 Quant Time: Jun 15 00:57:59 2018
 Quant Method : \\TERASTORAGE\Terastorage\pestpcbsrv\HPCHEM1\ECD_S\Method\PS052118.M
 Quant Title : 8080.M
 QLast Update : Thu May 31 04:46:50 2018
 Response via : Initial Calibration
 Integrator: ChemStation

Volume Inj. : 2 µl
 Signal #1 Phase : Rtx-CLPesticides Signal #2 Phase: Rtx-CLPesticides2
 Signal #1 Info : 30M x 0.32mm x0.5 Signal #2 Info : 30M x 0.32mm x 0.25µm

Compound	RT#1	RT#2	Resp#1	Resp#2	ng/ml	ng/ml

System Monitoring Compounds						
4) S 2,4-DCAA	11.817	11.177	174.0E6	152.9E6	492.725	486.653
Target Compounds						
1) T Dalapon	3.113	0.000	8651607	0	18.099	N.D. #
3) T 4-Nitroph...	11.386	10.333	3522795	4718207	15.124	25.335 #
7) T MCPA	12.789	12.040	8137403	8706871	4.342	5.864 #
10) T Pentachlo...	14.085	13.627	6349760	3365238	1.270	0.764 #
11) T 2,4,5-TP ...	14.951	14.237	2348468	3057217	1.185	1.777 #
12) T 2,4,5-T	15.349	14.769	3362840	1941532	1.715	1.178 #
14) T DINOSEB	0.000	15.888	0	12237277	N.D.	9.894 #
15) T Picloram	17.371	17.136	9120200	9672664	3.487	4.540 #
16) T DCPA	17.959	17.078	-458031	7226426	N.D.	3.497

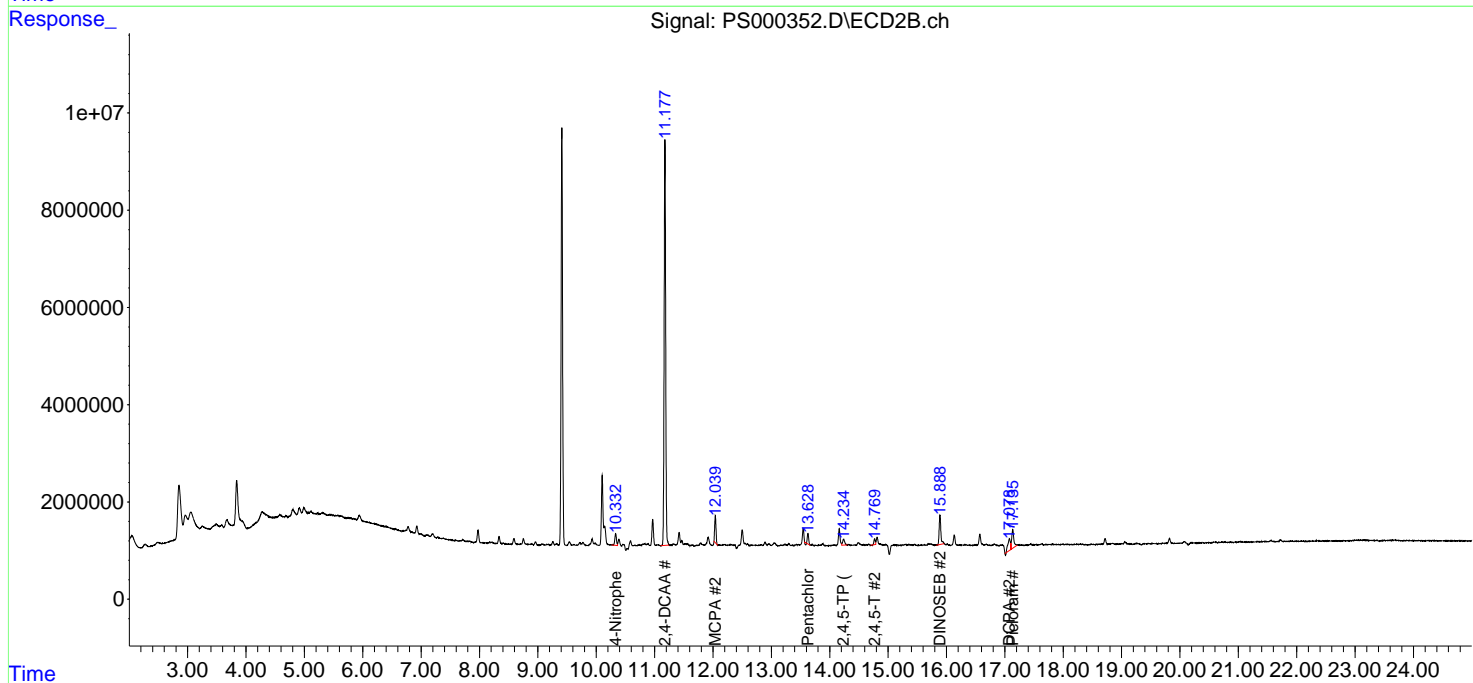
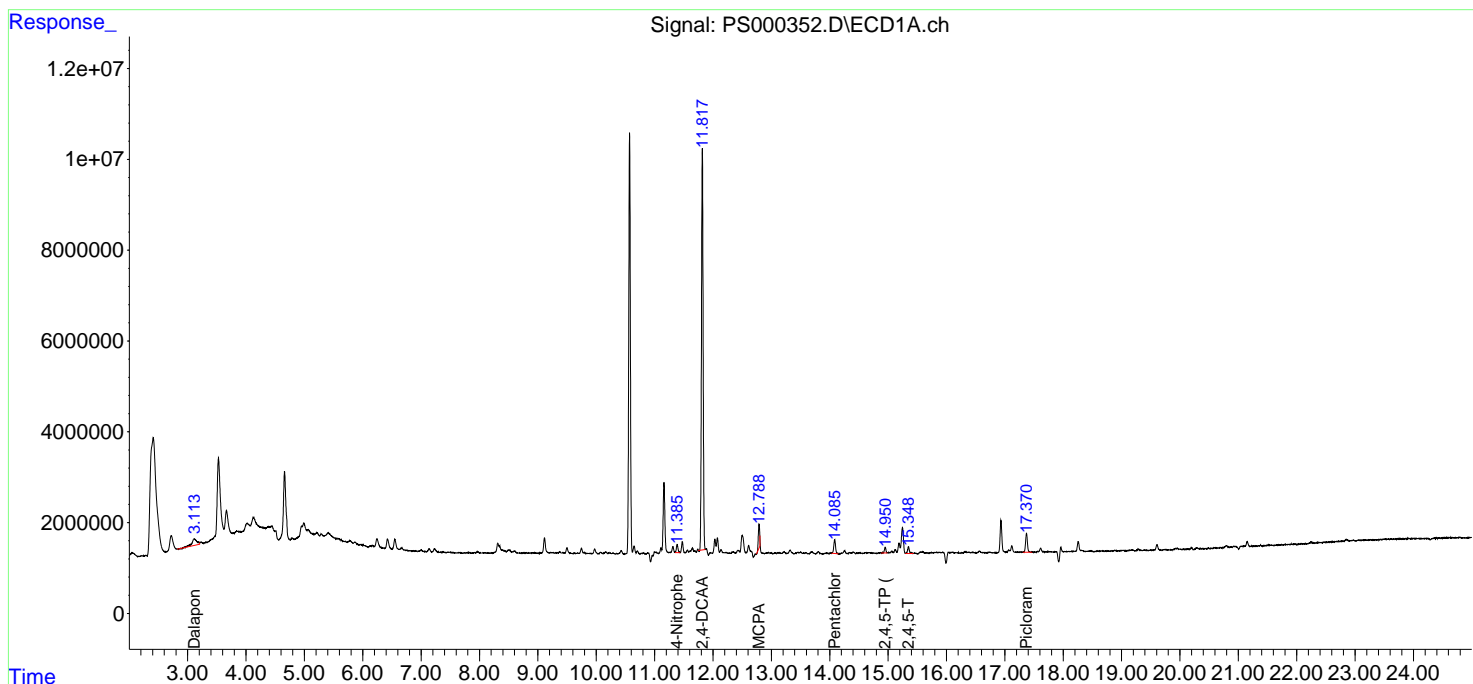
(f)=RT Delta > 1/2 Window (#)=Amounts differ by > 25% (m)=manual int.

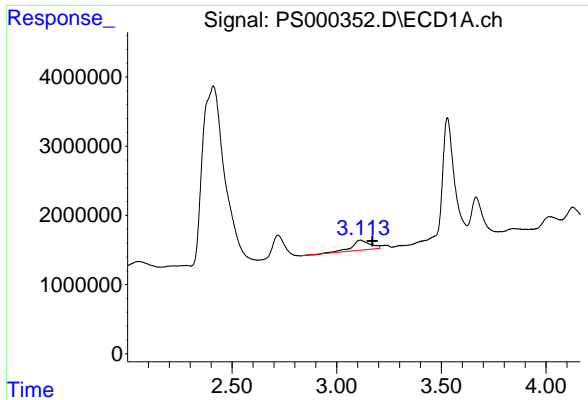
Data Path : Z:\pestpcbsrv\HPCHEM1\ECD_S\Data\PS061418\
 Data File : PS000352.D
 Signal(s) : Signal #1: ECD1A.ch Signal #2: ECD2B.ch
 Acq On : 14 Jun 2018 17:57
 Operator : UA
 Sample : PB110193BL
 Misc :
 ALS Vial : 13 Sample Multiplier: 1

Instrument :
 ECD_S
 ClientSampled :

Integration File signal 1: autoint1.e
 Integration File signal 2: autoint2.e
 Quant Time: Jun 15 00:57:59 2018
 Quant Method : \\TERASTORAGE\Terastorage\pestpcbsrv\HPCHEM1\ECD_S\Method\PS052118.M
 Quant Title : 8080.M
 QLast Update : Thu May 31 04:46:50 2018
 Response via : Initial Calibration
 Integrator: ChemStation

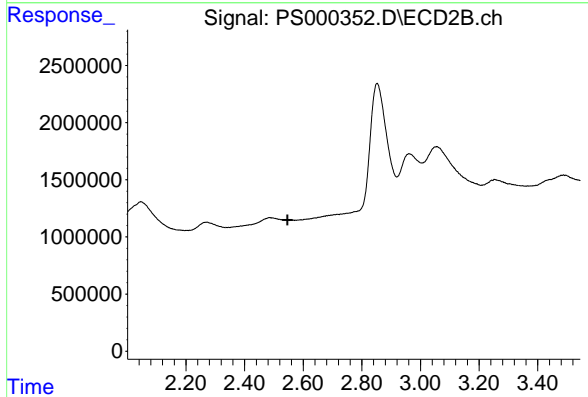
Volume Inj. : 2 µl
 Signal #1 Phase : Rtx-CLPesticides Signal #2 Phase: Rtx-CLPesticides2
 Signal #1 Info : 30M x 0.32mm x 0.5 Signal #2 Info : 30M x 0.32mm x 0.25µm



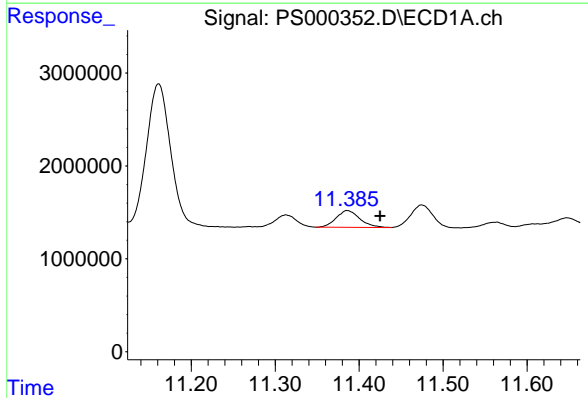


#1 Dalapon
 R.T.: 3.113 min
 Delta R.T.: -0.057 min
 Response: 8651607
 Conc: 18.10 ng/ml

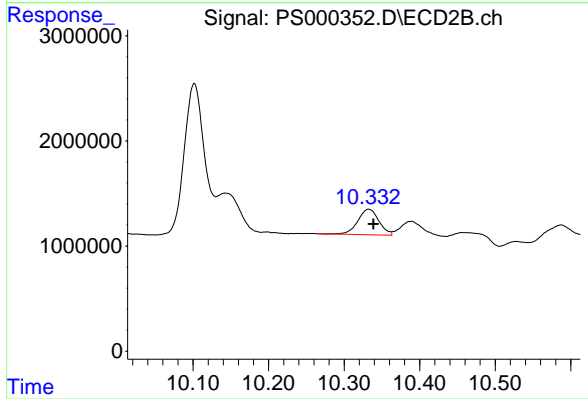
Instrument :
 ECD_S
 ClientSampleId :



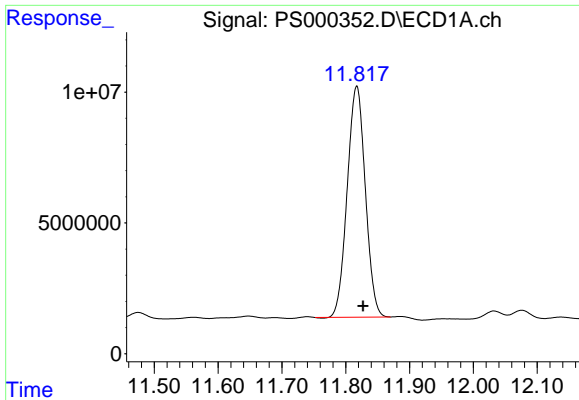
#1 Dalapon
 R.T.: 0.000 min
 Exp R.T. : 2.546 min
 Response: 0
 Conc: N.D.



#3 4-Nitrophenol
 R.T.: 11.386 min
 Delta R.T.: -0.039 min
 Response: 3522795
 Conc: 15.12 ng/ml



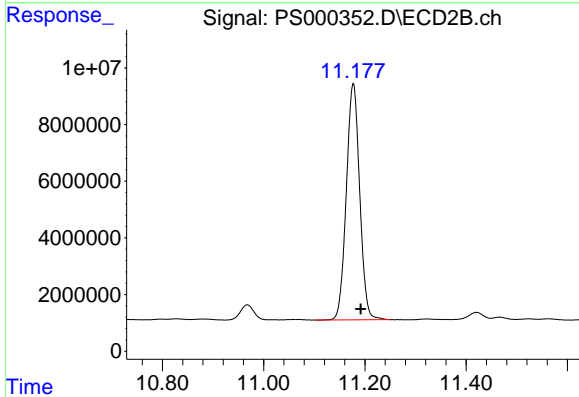
#3 4-Nitrophenol
 R.T.: 10.333 min
 Delta R.T.: -0.006 min
 Response: 4718207
 Conc: 25.33 ng/ml



#4 2,4-DCAA

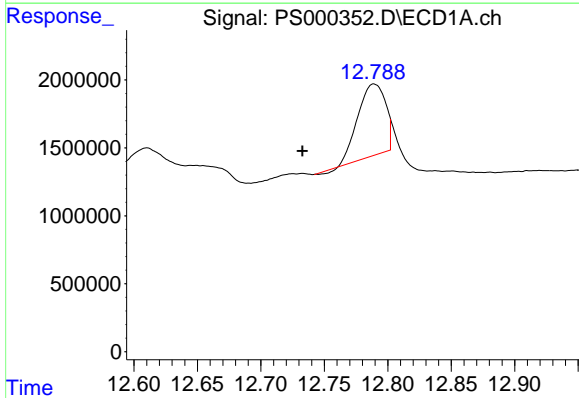
R.T.: 11.817 min
 Delta R.T.: -0.010 min
 Response: 173969478
 Conc: 492.72 ng/ml

Instrument :
 ECD_S
 ClientSampled :



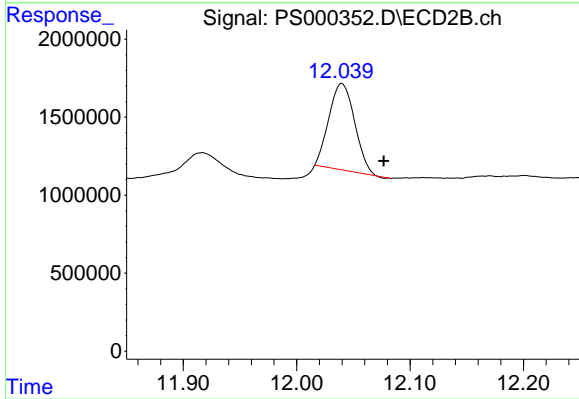
#4 2,4-DCAA

R.T.: 11.177 min
 Delta R.T.: -0.015 min
 Response: 152858600
 Conc: 486.65 ng/ml



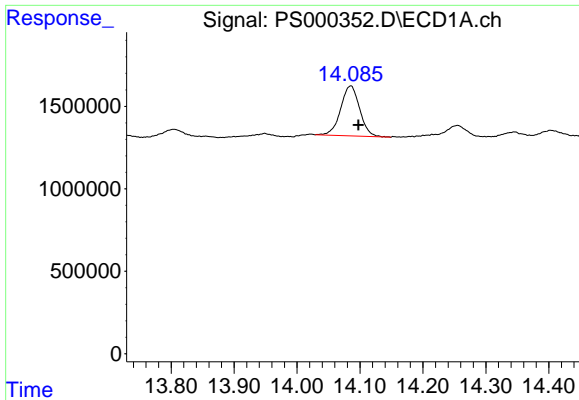
#7 MCPA

R.T.: 12.789 min
 Delta R.T.: 0.057 min
 Response: 8137403
 Conc: 4.34 ug/ml



#7 MCPA

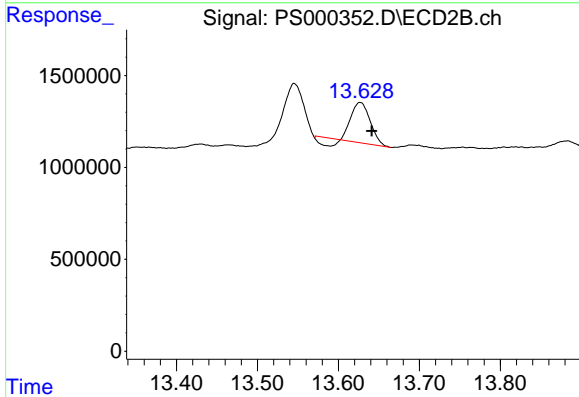
R.T.: 12.040 min
 Delta R.T.: -0.037 min
 Response: 8706871
 Conc: 5.86 ug/ml



#10 Pentachlorophenol

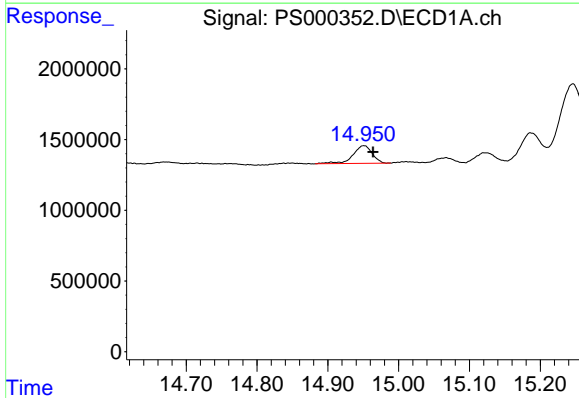
R.T.: 14.085 min
Delta R.T.: -0.013 min
Response: 6349760
Conc: 1.27 ng/ml

Instrument :
ECD_S
ClientSampled :



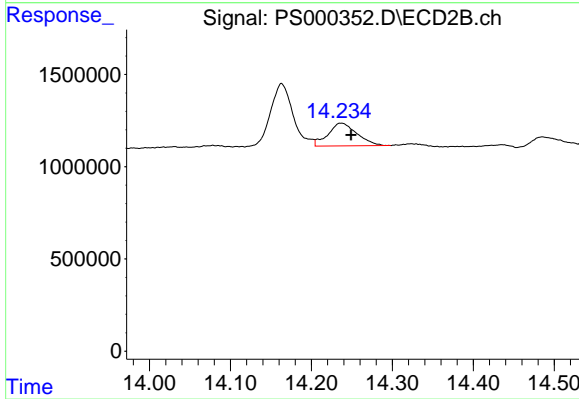
#10 Pentachlorophenol

R.T.: 13.627 min
Delta R.T.: -0.014 min
Response: 3365238
Conc: 0.76 ng/ml



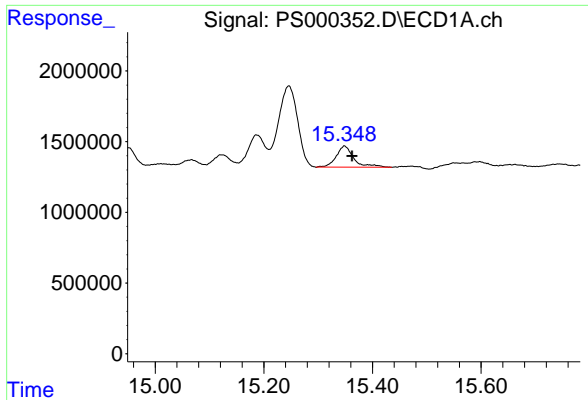
#11 2,4,5-TP (SILVEX)

R.T.: 14.951 min
Delta R.T.: -0.013 min
Response: 2348468
Conc: 1.18 ng/ml



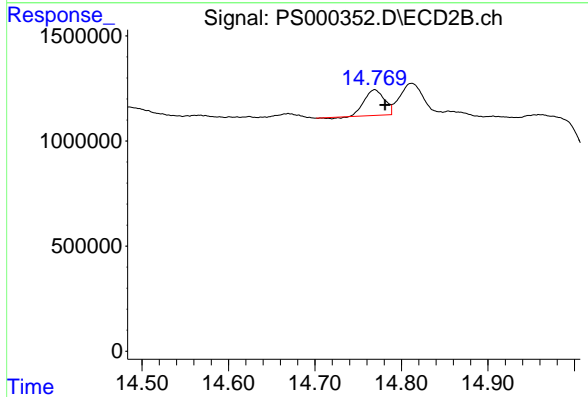
#11 2,4,5-TP (SILVEX)

R.T.: 14.237 min
Delta R.T.: -0.012 min
Response: 3057217
Conc: 1.78 ng/ml

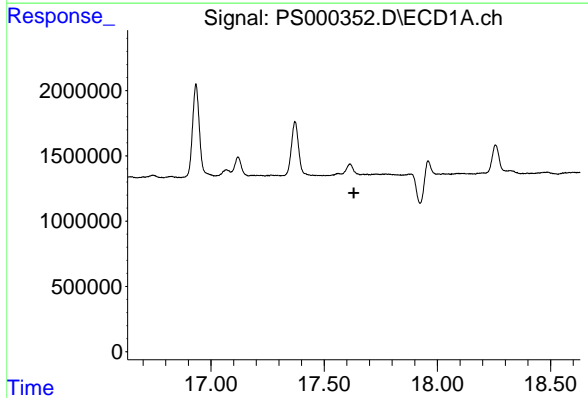


#12 2,4,5-T
 R.T.: 15.349 min
 Delta R.T.: -0.014 min
 Response: 3362840
 Conc: 1.72 ng/ml

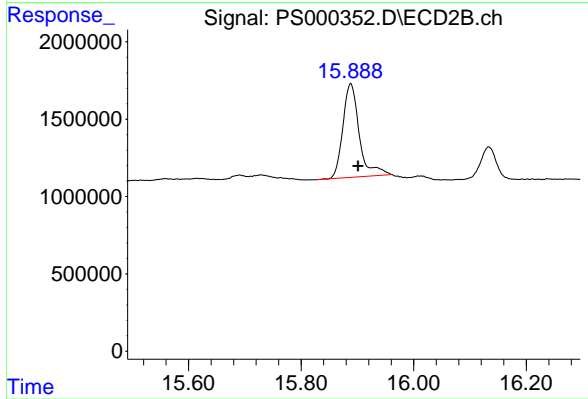
Instrument :
 ECD_S
 ClientSampled :



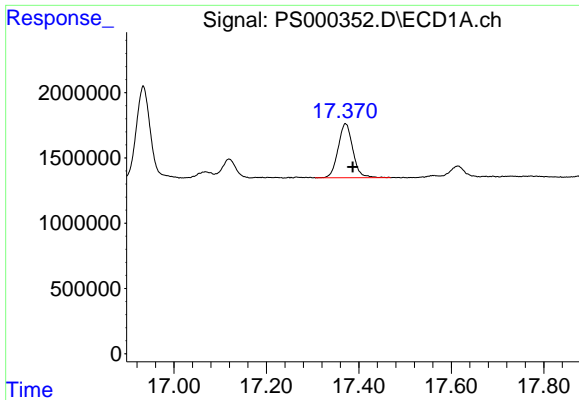
#12 2,4,5-T
 R.T.: 14.769 min
 Delta R.T.: -0.012 min
 Response: 1941532
 Conc: 1.18 ng/ml



#14 DINOSEB
 R.T.: 0.000 min
 Exp R.T. : 17.631 min
 Response: 0
 Conc: N.D.



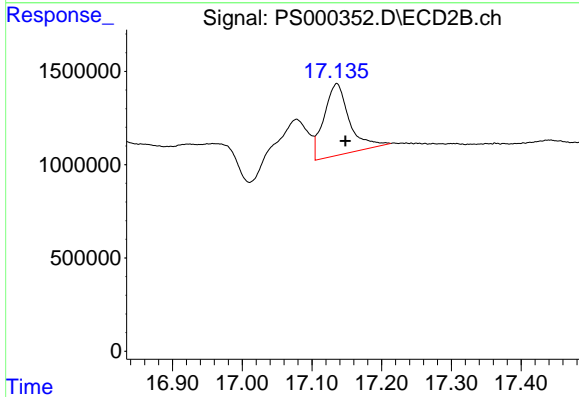
#14 DINOSEB
 R.T.: 15.888 min
 Delta R.T.: -0.013 min
 Response: 12237277
 Conc: 9.89 ng/ml



#15 Picloram

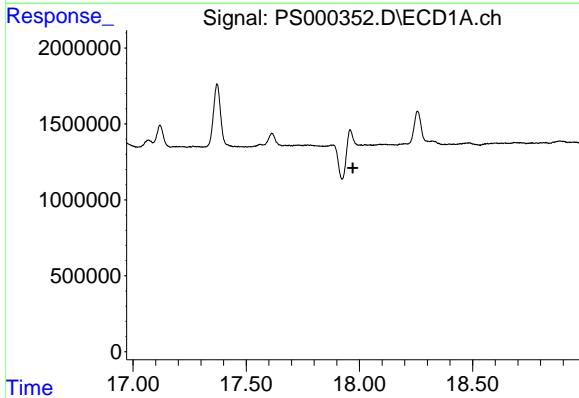
R.T.: 17.371 min
 Delta R.T.: -0.016 min
 Response: 9120200
 Conc: 3.49 ng/ml

Instrument :
 ECD_S
 ClientSampleId :



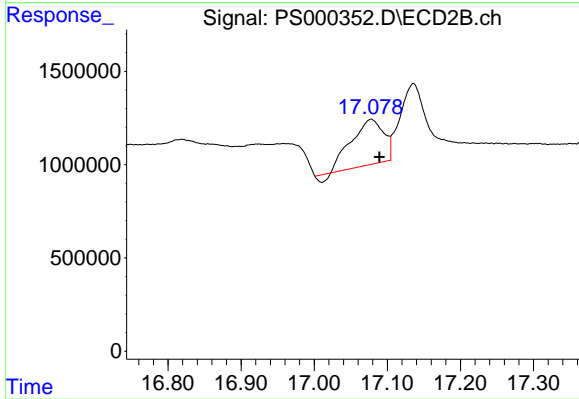
#15 Picloram

R.T.: 17.136 min
 Delta R.T.: -0.013 min
 Response: 9672664
 Conc: 4.54 ng/ml



#16 DCPA

R.T.: 17.959 min
 Delta R.T.: -0.012 min
 Response: -458031
 Conc: N.D.



#16 DCPA

R.T.: 17.078 min
 Delta R.T.: -0.011 min
 Response: 7226426
 Conc: 3.50 ng/ml