

Data Path : Z:\pestpcbsrv\HPCHEM1\ECD_S\Data\PS061418\
 Data File : PS000364.D
 Signal(s) : Signal #1: ECD1A.ch Signal #2: ECD2B.ch
 Acq On : 15 Jun 2018 00:08
 Operator : UA
 Sample : J3372-06
 Misc :
 ALS Vial : 23 Sample Multiplier: 1

Instrument :
 ECD_S
 ClientSampleId :

Integration File signal 1: autoint1.e
 Integration File signal 2: autoint2.e
 Quant Time: Jun 15 01:02:33 2018
 Quant Method : \\TERASTORAGE\Terastorage\pestpcbsrv\HPCHEM1\ECD_S\Method\PS052118.M
 Quant Title : 8080.M
 QLast Update : Thu May 31 04:46:50 2018
 Response via : Initial Calibration
 Integrator: ChemStation

Volume Inj. : 2 µl
 Signal #1 Phase : Rtx-CLPesticides Signal #2 Phase: Rtx-CLPesticides2
 Signal #1 Info : 30M x 0.32mm x0.5 Signal #2 Info : 30M x 0.32mm x 0.25µm

| Compound | RT#1 | RT#2 | Resp#1 | Resp#2 | ng/ml | ng/ml |
|-----------------------------|--------|--------|---------|---------|---------|---------|
| ----- | | | | | | |
| System Monitoring Compounds | | | | | | |
| 4) S 2,4-DCAA | 11.813 | 11.186 | 133.9E6 | 116.6E6 | 379.377 | 371.096 |
| Target Compounds | | | | | | |
| 1) T Dalapon | 3.110 | 0.000 | 5846674 | 0 | 12.231 | N.D. # |
| 2) T 3,5-DICHL... | 0.000 | 9.333 | 0 | 1346586 | N.D. | 3.050 # |
| 3) T 4-Nitroph... | 11.472 | 10.343 | 5133578 | 5016660 | 22.039 | 26.937 |
| 5) T DICAMBA | 0.000 | 11.429 | 0 | 2760728 | N.D. | 2.495 # |
| 14) T DINOSEB | 17.583 | 0.000 | 2680877 | 0 | 1.832 | N.D. # |
| 15) T Picloram | 17.363 | 0.000 | 2666375 | 0 | 1.019 | N.D. # |
| ----- | | | | | | |

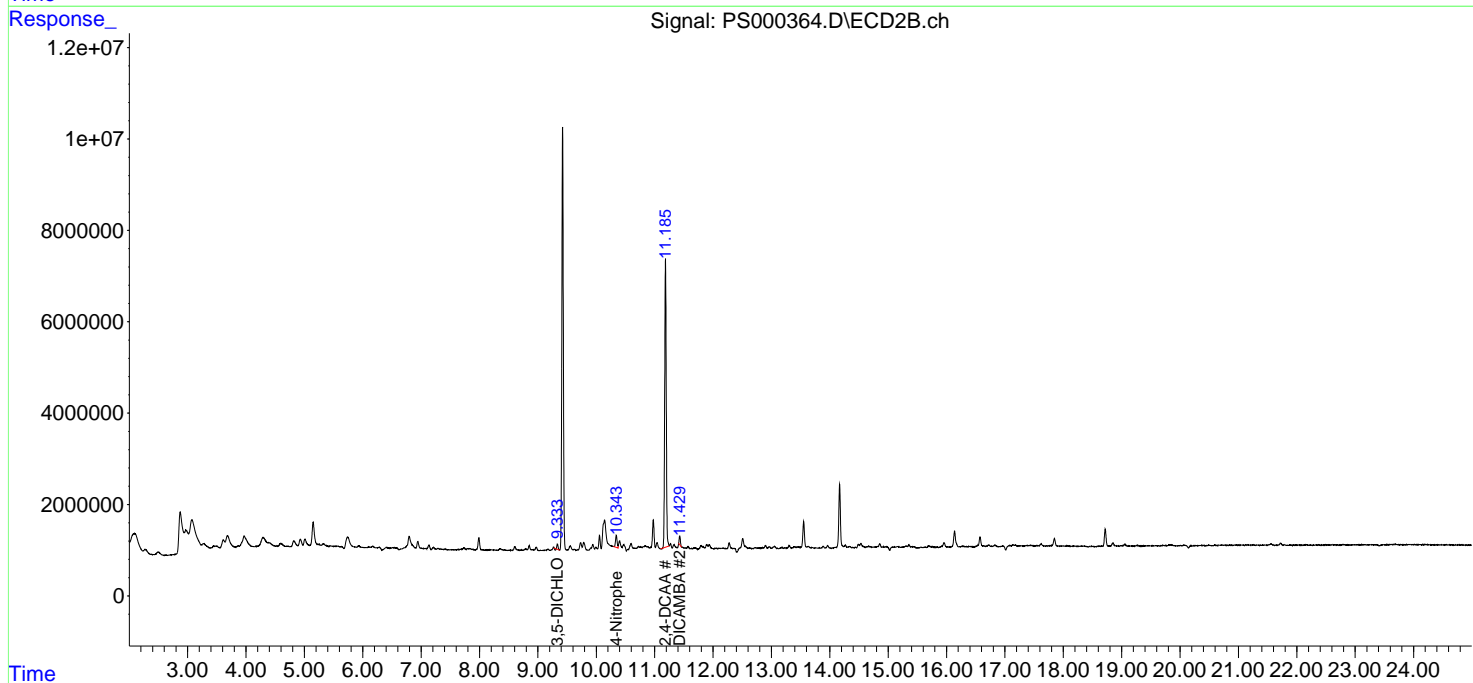
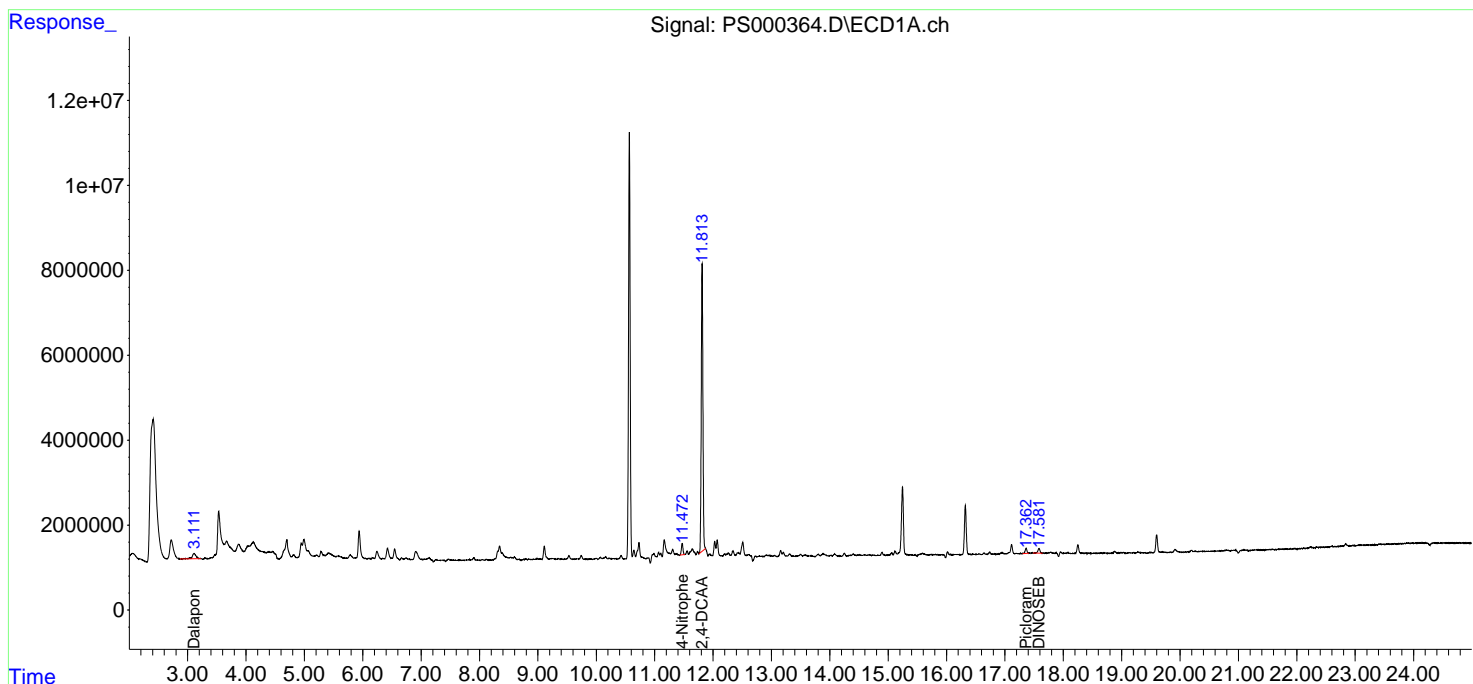
(f)=RT Delta > 1/2 Window (#)=Amounts differ by > 25% (m)=manual int.

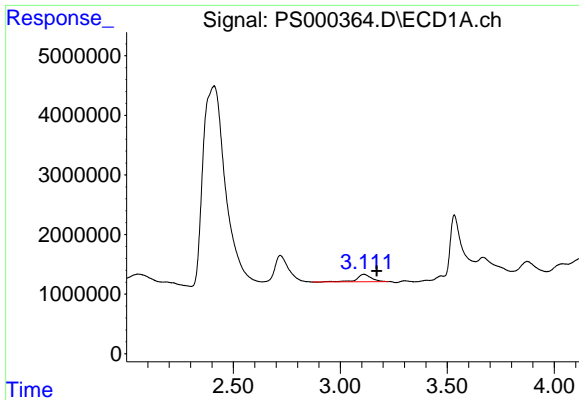
Data Path : Z:\pestpcbsrv\HPCHEM1\ECD_S\Data\PS061418\
 Data File : PS000364.D
 Signal(s) : Signal #1: ECD1A.ch Signal #2: ECD2B.ch
 Acq On : 15 Jun 2018 00:08
 Operator : UA
 Sample : J3372-06
 Misc :
 ALS Vial : 23 Sample Multiplier: 1

Instrument :
 ECD_S
 ClientSampled :

Integration File signal 1: autoint1.e
 Integration File signal 2: autoint2.e
 Quant Time: Jun 15 01:02:33 2018
 Quant Method : \\TERASTORAGE\Terastorage\pestpcbsrv\HPCHEM1\ECD_S\Method\PS052118.M
 Quant Title : 8080.M
 QLast Update : Thu May 31 04:46:50 2018
 Response via : Initial Calibration
 Integrator: ChemStation

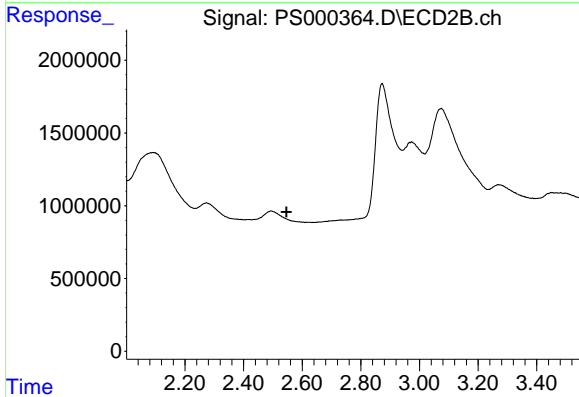
Volume Inj. : 2 µl
 Signal #1 Phase : Rtx-CLPesticides Signal #2 Phase: Rtx-CLPesticides2
 Signal #1 Info : 30M x 0.32mm x 0.5 Signal #2 Info : 30M x 0.32mm x 0.25µm



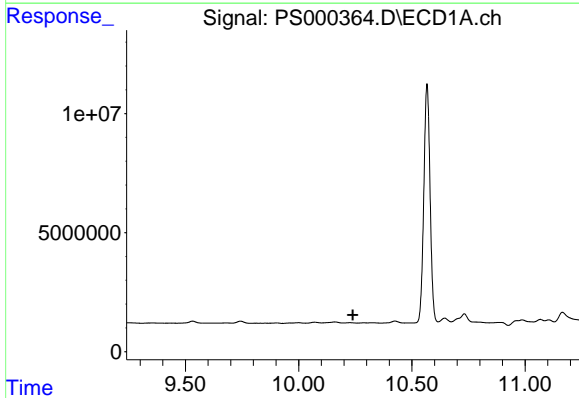


#1 Dalapon
 R.T.: 3.110 min
 Delta R.T.: -0.060 min
 Response: 5846674
 Conc: 12.23 ng/ml

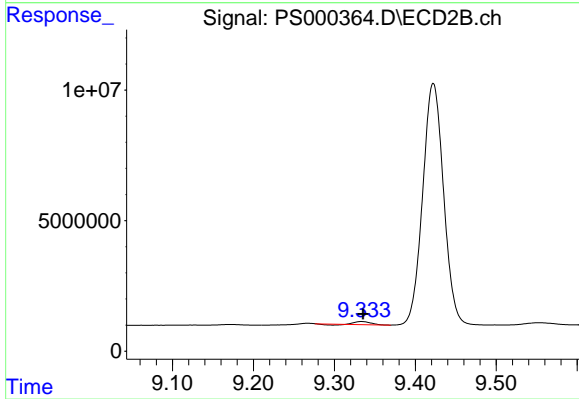
Instrument :
 ECD_S
 ClientSampled :



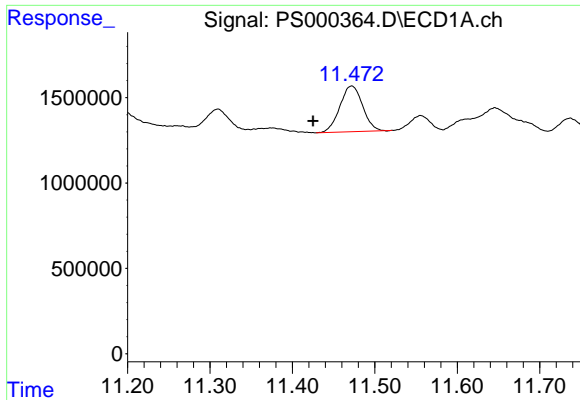
#1 Dalapon
 R.T.: 0.000 min
 Exp R.T. : 2.546 min
 Response: 0
 Conc: N.D.



#2 3,5-DICHLOROBENZOIC ACID
 R.T.: 0.000 min
 Exp R.T. : 10.239 min
 Response: 0
 Conc: N.D.



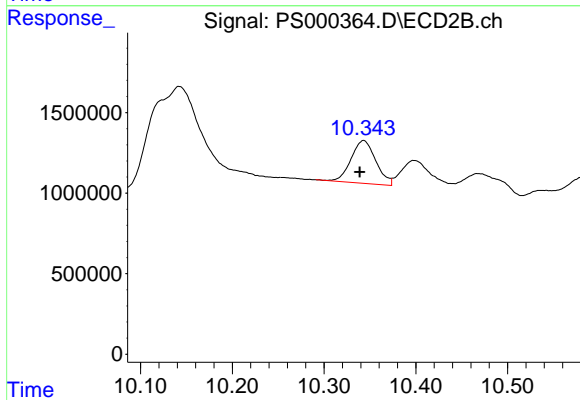
#2 3,5-DICHLOROBENZOIC ACID
 R.T.: 9.333 min
 Delta R.T.: -0.002 min
 Response: 1346586
 Conc: 3.05 ng/ml



#3 4-Nitrophenol

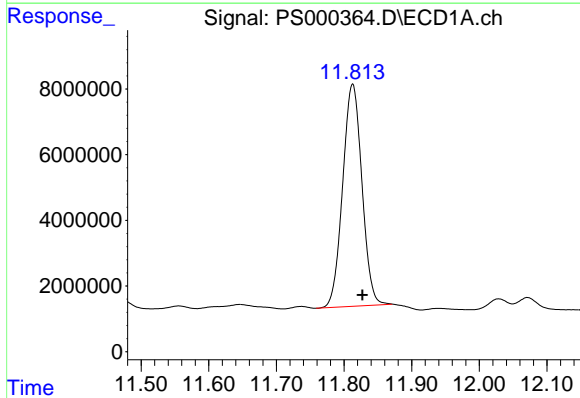
R.T.: 11.472 min
 Delta R.T.: 0.047 min
 Response: 5133578
 Conc: 22.04 ng/ml

Instrument :
 ECD_S
 ClientSampled :



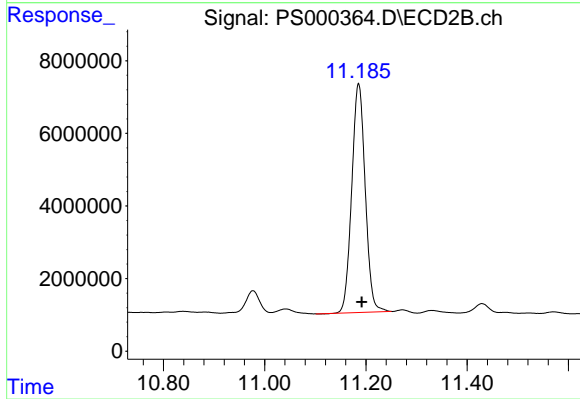
#3 4-Nitrophenol

R.T.: 10.343 min
 Delta R.T.: 0.004 min
 Response: 5016660
 Conc: 26.94 ng/ml



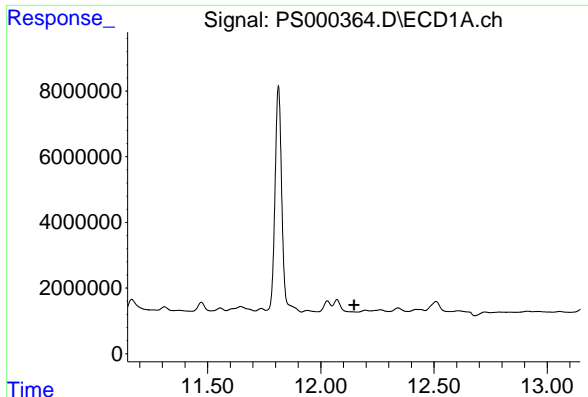
#4 2,4-DCAA

R.T.: 11.813 min
 Delta R.T.: -0.015 min
 Response: 133948982
 Conc: 379.38 ng/ml



#4 2,4-DCAA

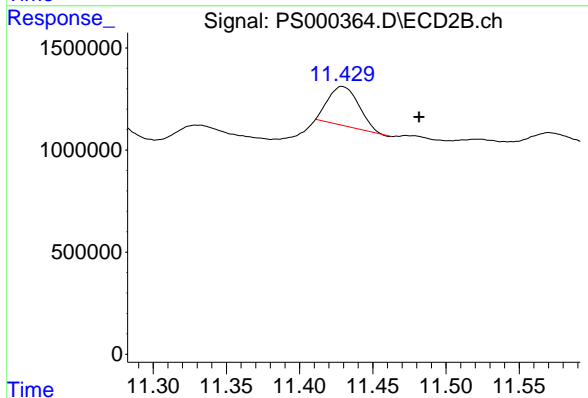
R.T.: 11.186 min
 Delta R.T.: -0.006 min
 Response: 116561937
 Conc: 371.10 ng/ml



#5 DICAMBA

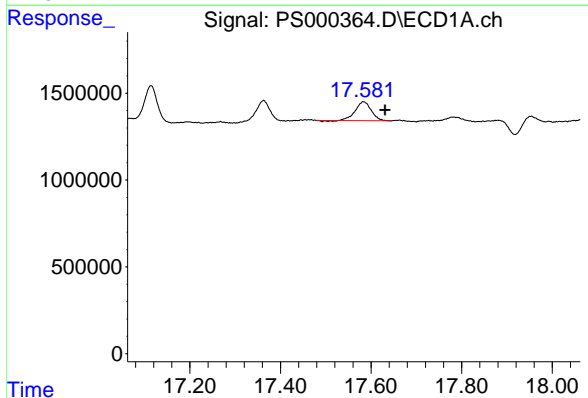
R.T.: 0.000 min
 Exp R.T. : 12.147 min
 Response: 0
 Conc: N.D.

Instrument :
 ECD_S
 ClientSampleId :



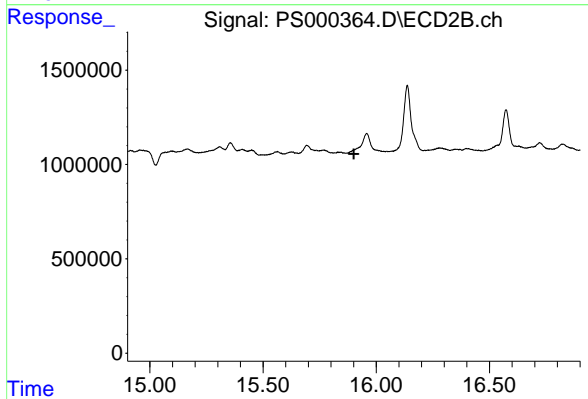
#5 DICAMBA

R.T.: 11.429 min
 Delta R.T.: -0.053 min
 Response: 2760728
 Conc: 2.50 ng/ml



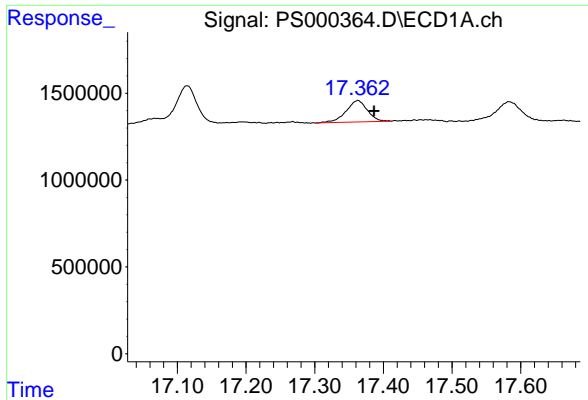
#14 DINOSEB

R.T.: 17.583 min
 Delta R.T.: -0.048 min
 Response: 2680877
 Conc: 1.83 ng/ml



#14 DINOSEB

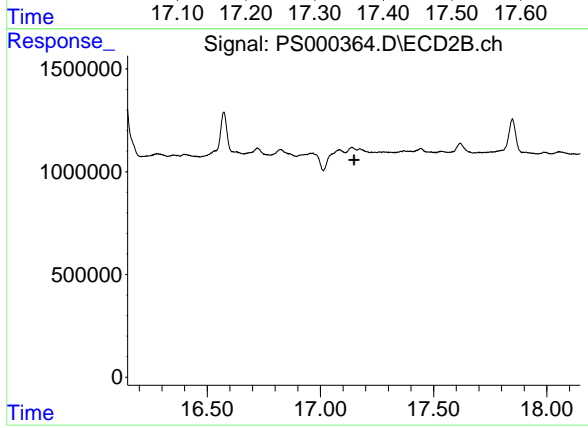
R.T.: 0.000 min
 Exp R.T. : 15.902 min
 Response: 0
 Conc: N.D.



#15 Picloram

R.T.: 17.363 min
 Delta R.T.: -0.024 min
 Response: 2666375
 Conc: 1.02 ng/ml

Instrument :
 ECD_S
 ClientSampleId :



#15 Picloram

R.T.: 0.000 min
 Exp R.T. : 17.148 min
 Response: 0
 Conc: N.D.