

Data Path : Z:\pestpcbsrv\HPCHEM1\ECD_S\Data\PS061419\
 Data File : PS005024.D
 Signal(s) : Signal #1: ECD1A.ch Signal #2: ECD2B.ch
 Acq On : 14 Jun 2019 16:30
 Operator : SM\AJ
 Sample : PB120603BS
 Misc :
 ALS Vial : 5 Sample Multiplier: 1

Instrument :
 ECD_S
 ClientSampleId :
 PB120603BS

Integration File signal 1: autoint1.e
 Integration File signal 2: autoint2.e
 Quant Time: Jun 14 22:55:02 2019
 Quant Method : Z:\pestpcbsrv\HPCHEM1\ECD_S\Method\PS061219.M
 Quant Title : 8080.M
 QLast Update : Fri Jun 14 09:57:49 2019
 Response via : Initial Calibration
 Integrator: ChemStation

Volume Inj. : 2 µl
 Signal #1 Phase : Rtx-CLPesticides Signal #2 Phase: Rtx-CLPesticides2
 Signal #1 Info : 30M x 0.32mm x0.5 Signal #2 Info : 30M x 0.32mm x 0.25µm

	Compound	RT#1	RT#2	Resp#1	Resp#2	ng/ml	ng/ml

System Monitoring Compounds							
4) S	2,4-DCAA	5.586	5.299	677.9E6	505.2E6	514.389	506.419
Target Compounds							
1) T	Dalapon	2.112	1.813	795.8E6	447.0E6	456.876	342.359 #
2) T	3,5-DICHL...	4.934	4.592	974.0E6	708.5E6	516.739	553.608
3) T	4-Nitroph...	5.434	4.975	255.3E6	208.0E6	560.617	458.655
5) T	DICAMBA	5.746	5.432	2540.9E6	1780.6E6	448.951	463.626
6) T	MCP P	5.903	5.520	235.1E6	141.3E6	52.697	48.888
7) T	MCPA	6.040	5.704	283.4E6	214.6E6	45.216	50.914
8) T	DICHLORPROP	6.385	5.988	675.9E6	475.7E6	483.133	489.830
9) T	2,4-D	6.602	6.261	754.4E6	611.4E6	559.081	571.296
10) T	Pentachlo...	6.872	6.637	10339.5E6	6948.6E6	537.464	539.318
11) T	2,4,5-TP ...	7.409	7.000	4075.7E6	2781.2E6	518.723	519.590
12) T	2,4,5-T	7.683	7.362	3905.7E6	2381.5E6	488.796	504.925
13) T	2,4-DB	8.216	7.851	485.0E6	340.4E6	528.300	536.353
14) T	DINOSEB	9.316	8.165	2836.4E6	1737.9E6	432.559	447.379
15) T	Picloram	9.145	9.108	3973.1E6	2519.7E6	400.191	369.394
16) T	DCPA	9.586	9.065	3372.3E6	1979.5E6	347.320	300.172

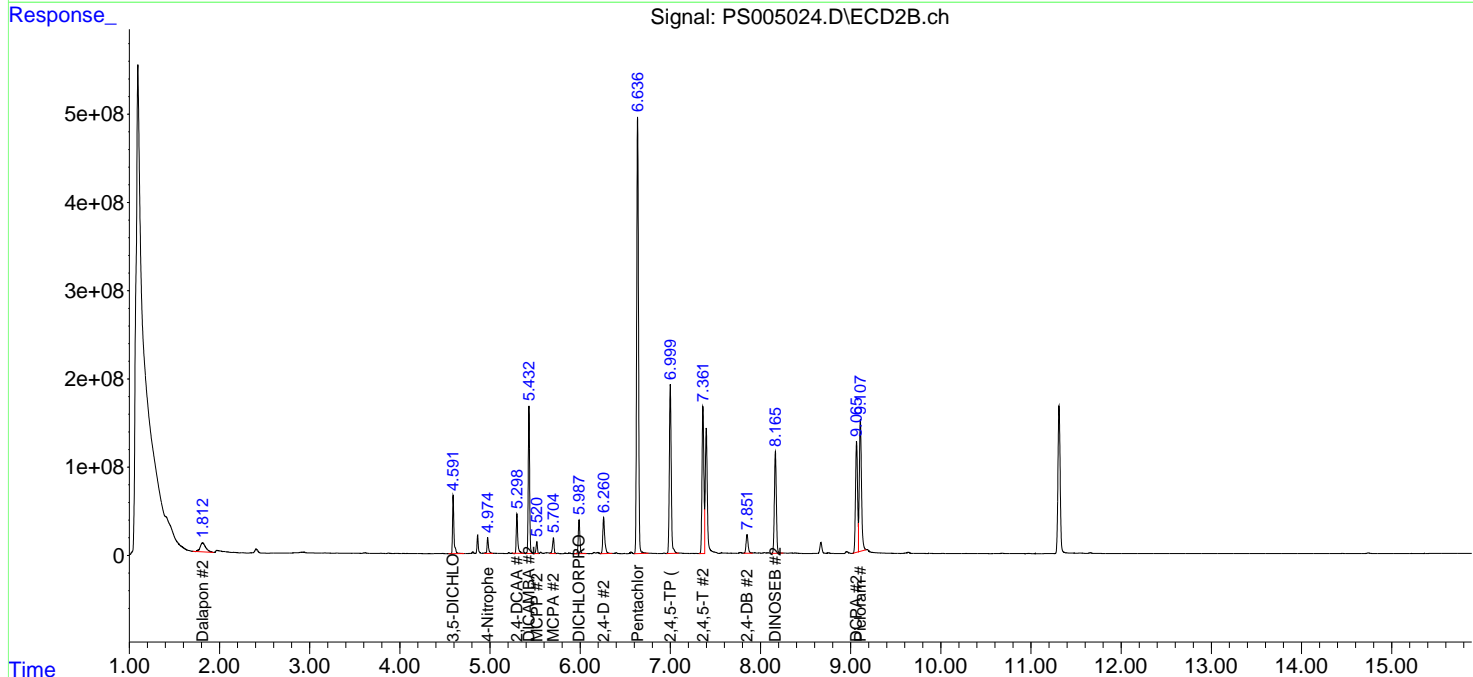
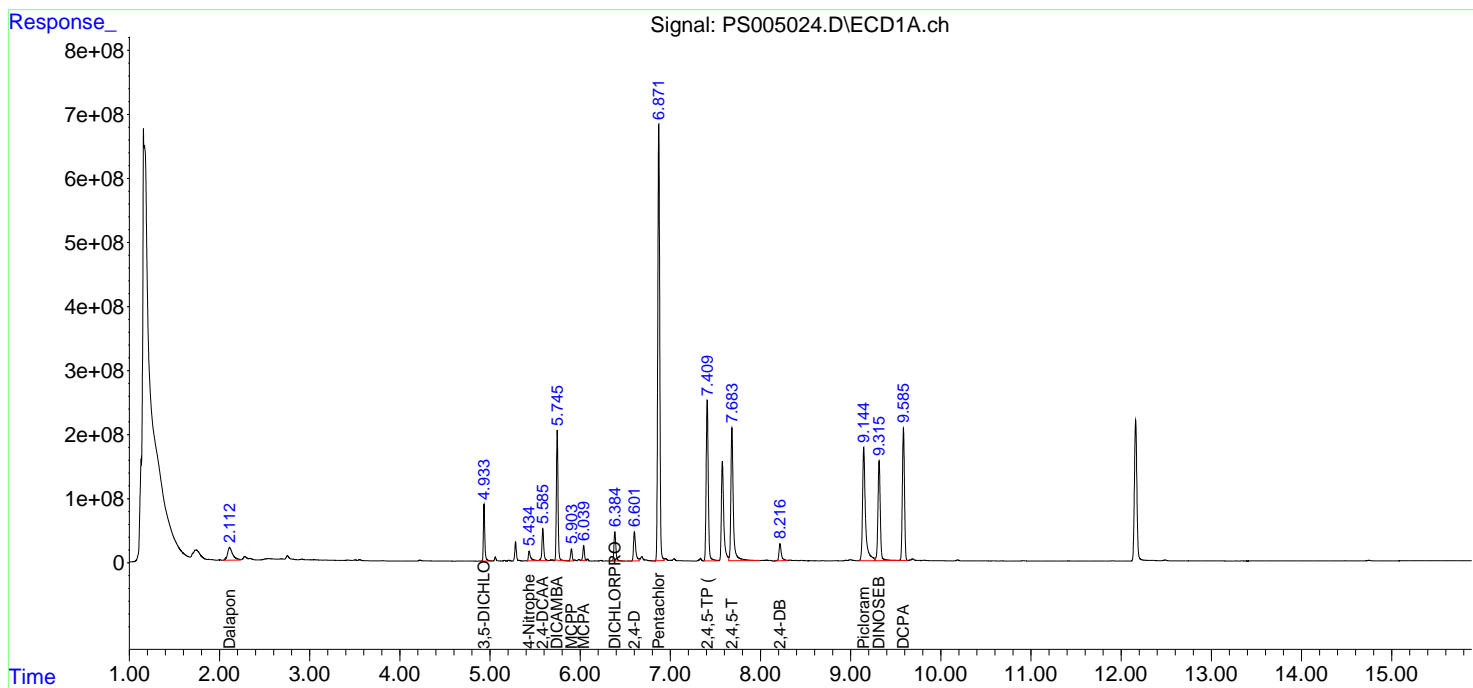
(f)=RT Delta > 1/2 Window (#)=Amounts differ by > 25% (m)=manual int.

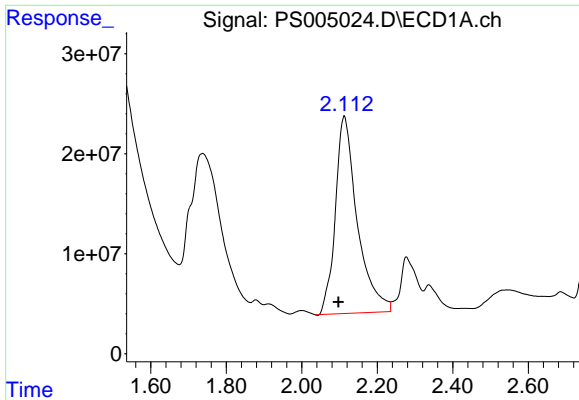
Data Path : Z:\pestpcbsrv\HPCHEM1\ECD_S\Data\PS061419\
 Data File : PS005024.D
 Signal(s) : Signal #1: ECD1A.ch Signal #2: ECD2B.ch
 Acq On : 14 Jun 2019 16:30
 Operator : SM\AJ
 Sample : PB120603BS
 Misc :
 ALS Vial : 5 Sample Multiplier: 1

Instrument :
 ECD_S
 ClientSampleID :
 PB120603BS

Integration File signal 1: autoint1.e
 Integration File signal 2: autoint2.e
 Quant Time: Jun 14 22:55:02 2019
 Quant Method : Z:\pestpcbsrv\HPCHEM1\ECD_S\Method\PS061219.M
 Quant Title : 8080.M
 QLast Update : Fri Jun 14 09:57:49 2019
 Response via : Initial Calibration
 Integrator: ChemStation

Volume Inj. : 2 µl
 Signal #1 Phase : Rtx-CLPesticides Signal #2 Phase: Rtx-CLPesticides2
 Signal #1 Info : 30M x 0.32mm x0.5 Signal #2 Info : 30M x 0.32mm x 0.25µm

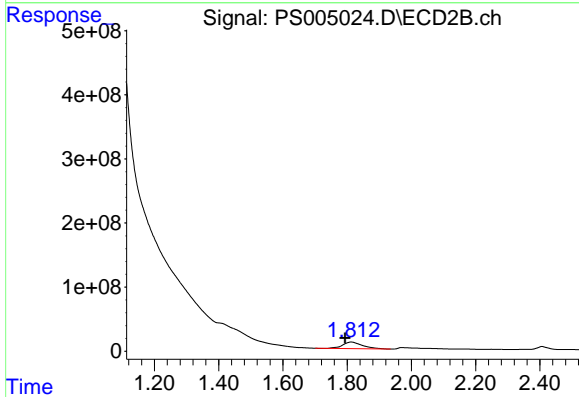




#1 Dalapon

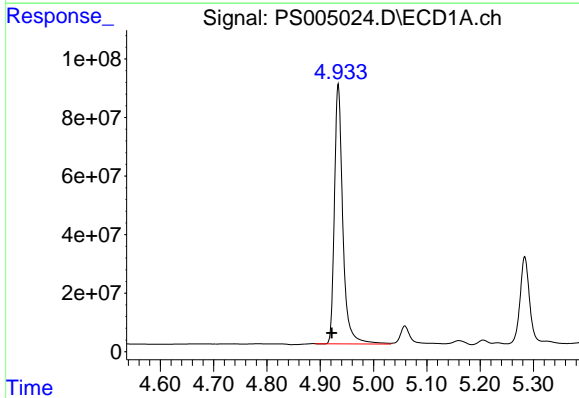
R.T.: 2.112 min
 Delta R.T.: 0.015 min
 Response: 795838198
 Conc: 456.88 ng/ml

Instrument :
 ECD_S
 ClientSampleId :
 PB120603BS



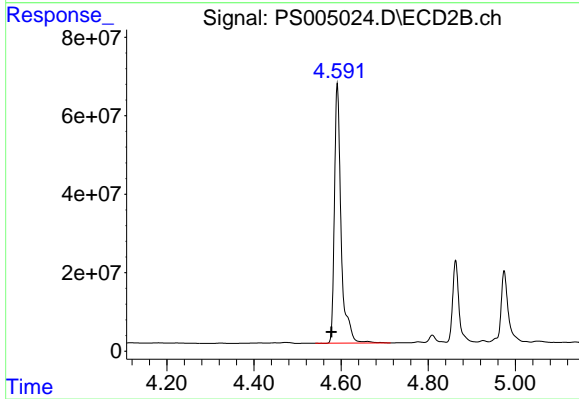
#1 Dalapon

R.T.: 1.813 min
 Delta R.T.: 0.019 min
 Response: 446971785
 Conc: 342.36 ng/ml



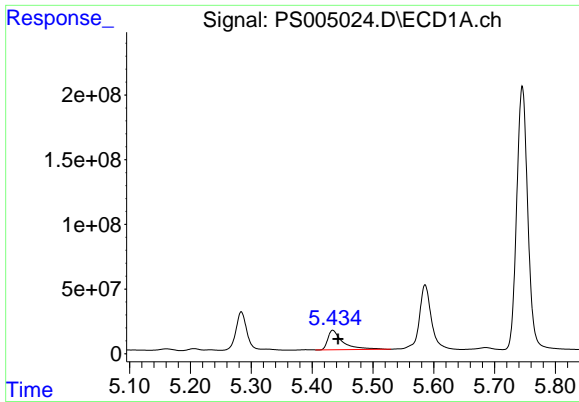
#2 3,5-DICHLOROBENZOIC ACID

R.T.: 4.934 min
 Delta R.T.: 0.012 min
 Response: 973970102
 Conc: 516.74 ng/ml



#2 3,5-DICHLOROBENZOIC ACID

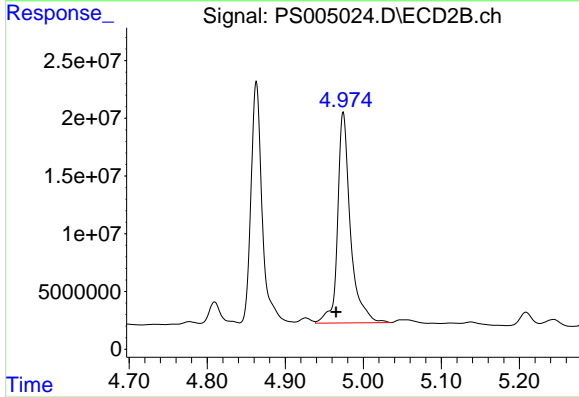
R.T.: 4.592 min
 Delta R.T.: 0.014 min
 Response: 708501351
 Conc: 553.61 ng/ml



#3 4-Nitrophenol

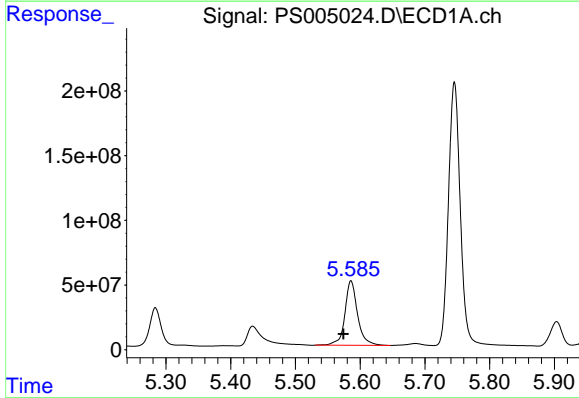
R.T.: 5.434 min
 Delta R.T.: -0.008 min
 Response: 255348685
 Conc: 560.62 ng/ml

Instrument :
 ECD_S
 ClientSampleId :
 PB120603BS



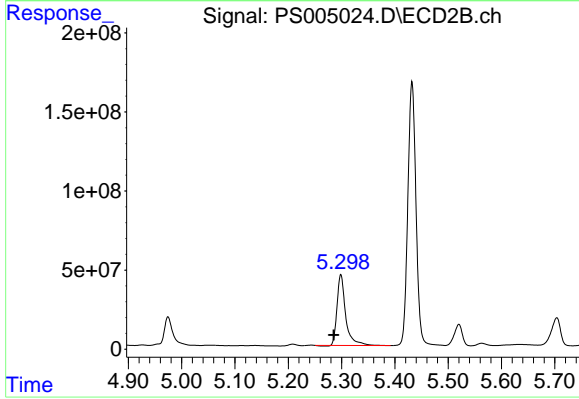
#3 4-Nitrophenol

R.T.: 4.975 min
 Delta R.T.: 0.009 min
 Response: 207983903
 Conc: 458.65 ng/ml



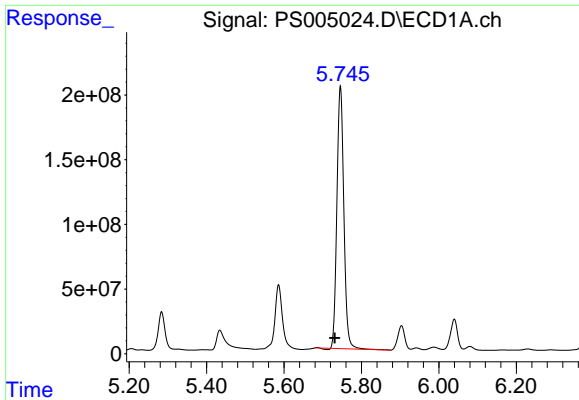
#4 2,4-DCAA

R.T.: 5.586 min
 Delta R.T.: 0.012 min
 Response: 677859242
 Conc: 514.39 ng/ml



#4 2,4-DCAA

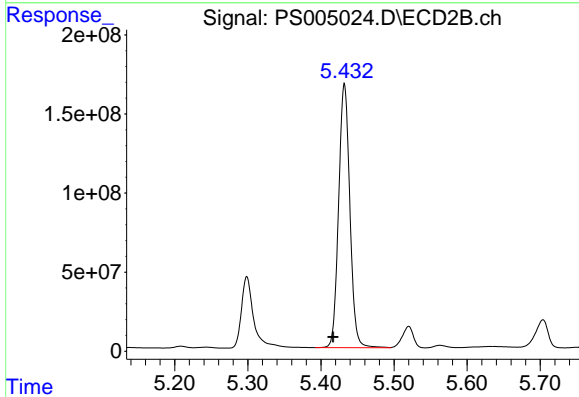
R.T.: 5.299 min
 Delta R.T.: 0.014 min
 Response: 505171449
 Conc: 506.42 ng/ml



#5 DICAMBA

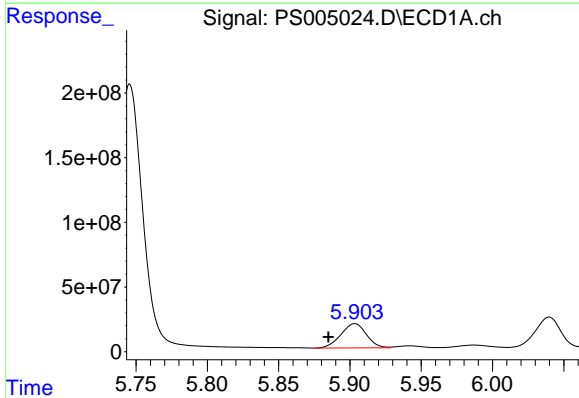
R.T.: 5.746 min
 Delta R.T.: 0.015 min
 Response: 2540942836
 Conc: 448.95 ng/ml

Instrument :
 ECD_S
 ClientSampleId :
 PB120603BS



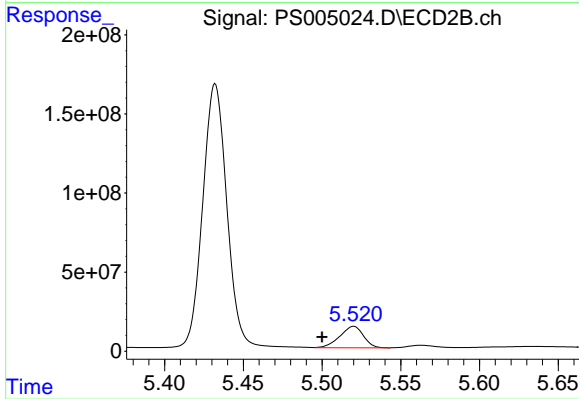
#5 DICAMBA

R.T.: 5.432 min
 Delta R.T.: 0.015 min
 Response: 1780553653
 Conc: 463.63 ng/ml



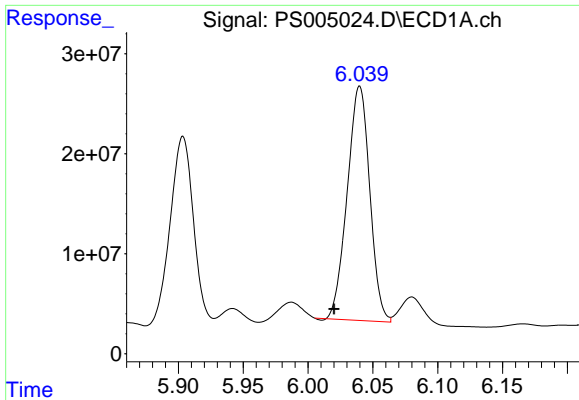
#6 MCPP

R.T.: 5.903 min
 Delta R.T.: 0.018 min
 Response: 235053365
 Conc: 52.70 ug/ml



#6 MCPP

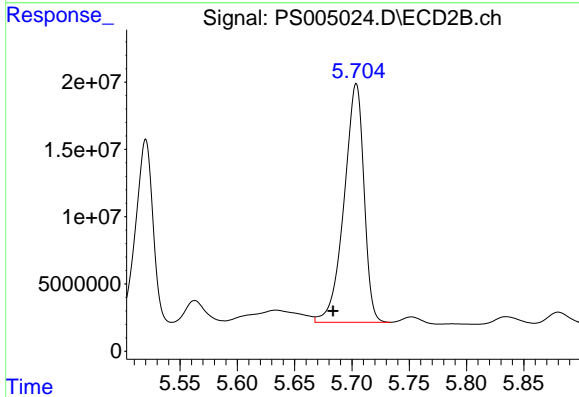
R.T.: 5.520 min
 Delta R.T.: 0.020 min
 Response: 141259376
 Conc: 48.89 ug/ml



#7 MCPA

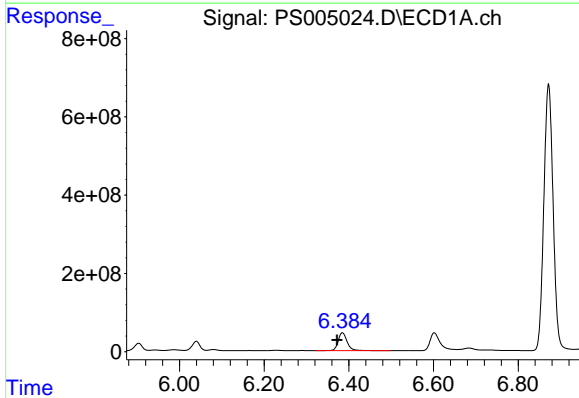
R.T.: 6.040 min
 Delta R.T.: 0.020 min
 Response: 283364243
 Conc: 45.22 ug/ml

Instrument :
 ECD_S
 ClientSampled :
 PB120603BS



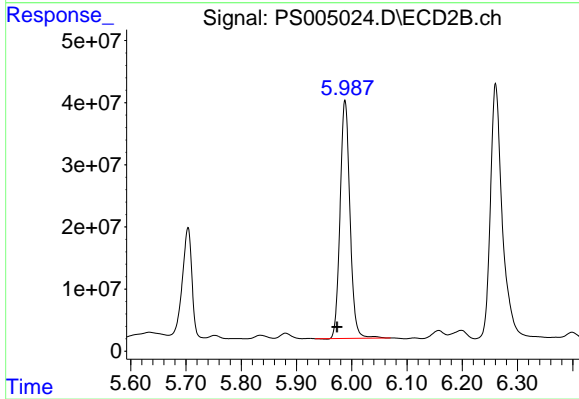
#7 MCPA

R.T.: 5.704 min
 Delta R.T.: 0.020 min
 Response: 214623828
 Conc: 50.91 ug/ml



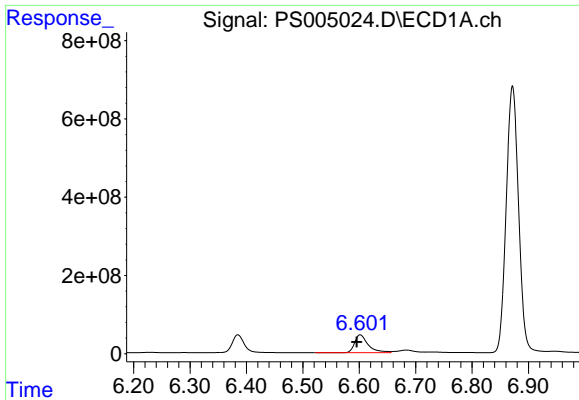
#8 DICHLORPROP

R.T.: 6.385 min
 Delta R.T.: 0.012 min
 Response: 675913574
 Conc: 483.13 ng/ml



#8 DICHLORPROP

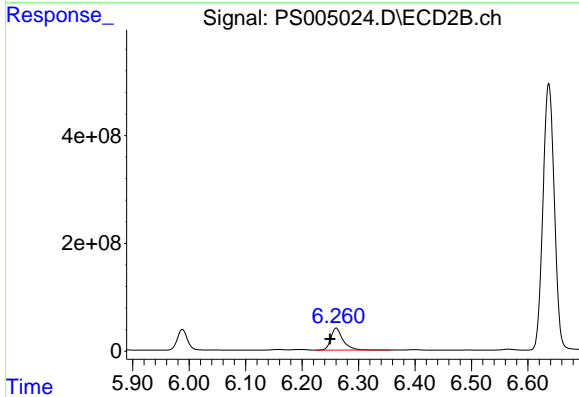
R.T.: 5.988 min
 Delta R.T.: 0.014 min
 Response: 475730052
 Conc: 489.83 ng/ml



#9 2,4-D

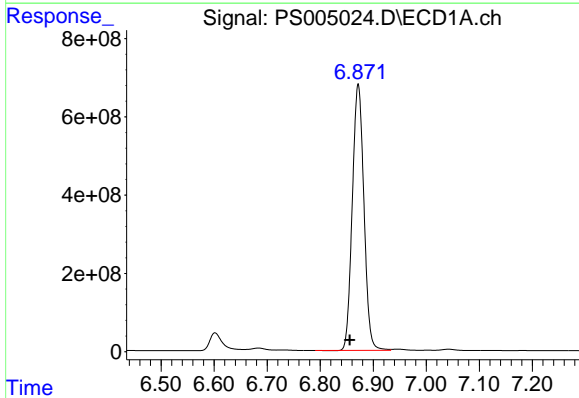
R.T.: 6.602 min
 Delta R.T.: 0.006 min
 Response: 754393666
 Conc: 559.08 ng/ml

Instrument :
 ECD_S
 ClientSampleId :
 PB120603BS



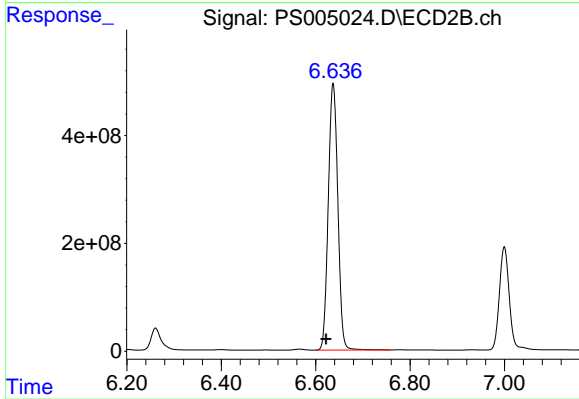
#9 2,4-D

R.T.: 6.261 min
 Delta R.T.: 0.011 min
 Response: 611382592
 Conc: 571.30 ng/ml



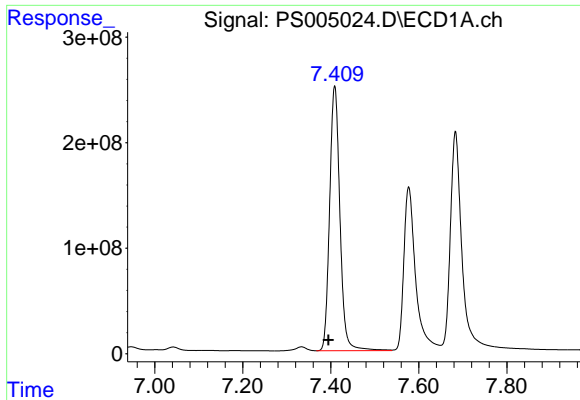
#10 Pentachlorophenol

R.T.: 6.872 min
 Delta R.T.: 0.016 min
 Response: 10339470451
 Conc: 537.46 ng/ml



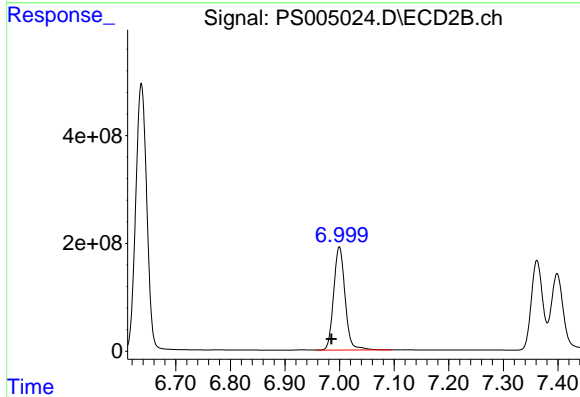
#10 Pentachlorophenol

R.T.: 6.637 min
 Delta R.T.: 0.015 min
 Response: 6948567263
 Conc: 539.32 ng/ml

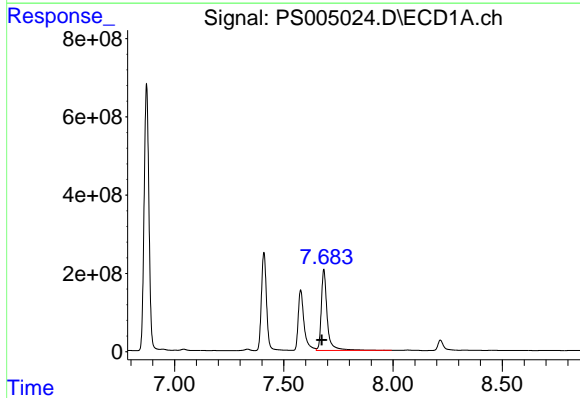


#11 2,4,5-TP (SILVEX)
 R.T.: 7.409 min
 Delta R.T.: 0.014 min
 Response: 4075681208
 Conc: 518.72 ng/ml

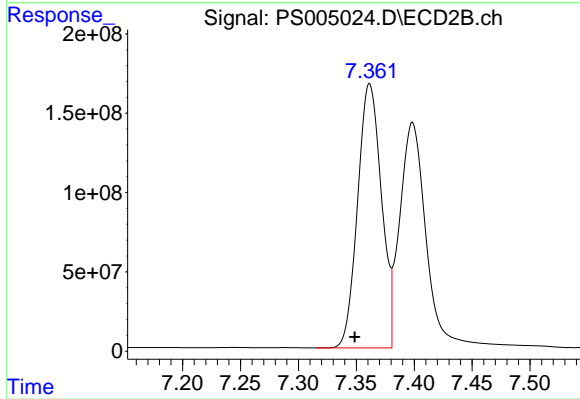
Instrument :
 ECD_S
ClientSampleId :
 PB120603BS



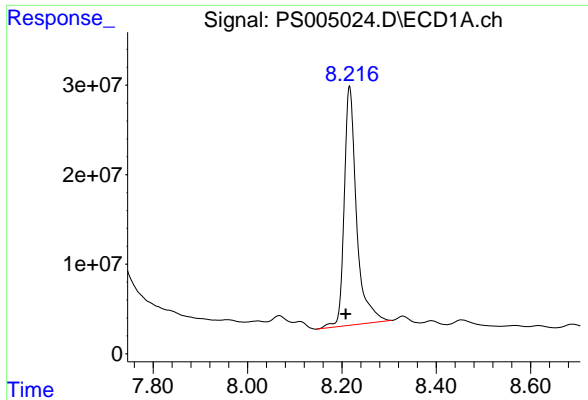
#11 2,4,5-TP (SILVEX)
 R.T.: 7.000 min
 Delta R.T.: 0.014 min
 Response: 2781206991
 Conc: 519.59 ng/ml



#12 2,4,5-T
 R.T.: 7.683 min
 Delta R.T.: 0.009 min
 Response: 3905685970
 Conc: 488.80 ng/ml

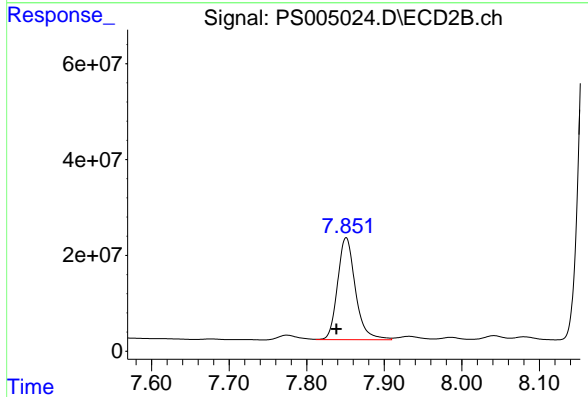


#12 2,4,5-T
 R.T.: 7.362 min
 Delta R.T.: 0.013 min
 Response: 2381541846
 Conc: 504.92 ng/ml

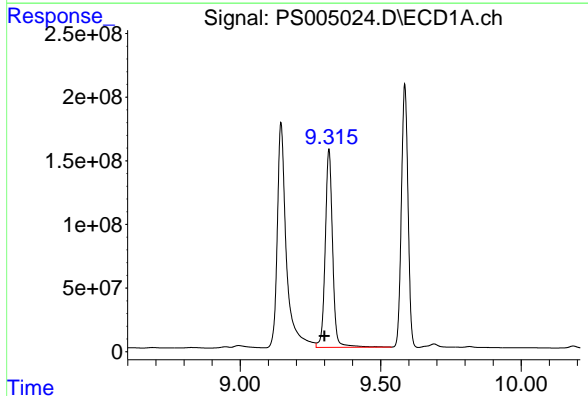


#13 2,4-DB
 R.T.: 8.216 min
 Delta R.T.: 0.008 min
 Response: 484971848
 Conc: 528.30 ng/ml

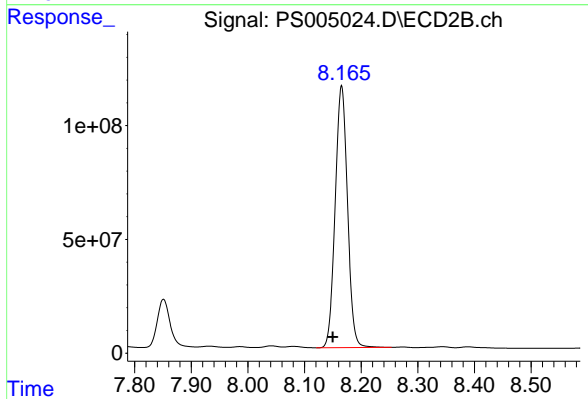
Instrument :
 ECD_S
 ClientSampleId :
 PB120603BS



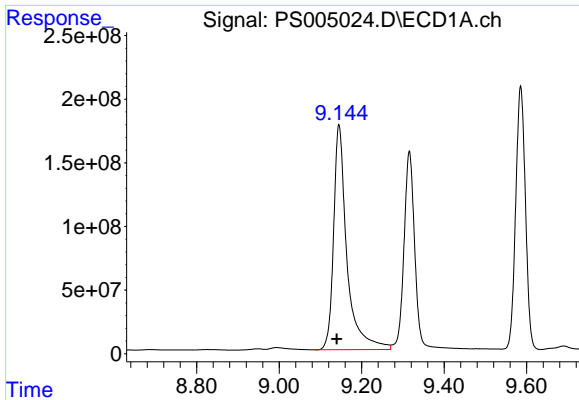
#13 2,4-DB
 R.T.: 7.851 min
 Delta R.T.: 0.013 min
 Response: 340391787
 Conc: 536.35 ng/ml



#14 DINOSEB
 R.T.: 9.316 min
 Delta R.T.: 0.016 min
 Response: 2836430051
 Conc: 432.56 ng/ml

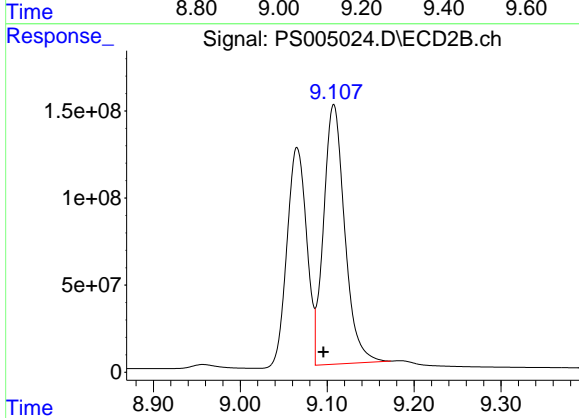


#14 DINOSEB
 R.T.: 8.165 min
 Delta R.T.: 0.016 min
 Response: 1737870086
 Conc: 447.38 ng/ml

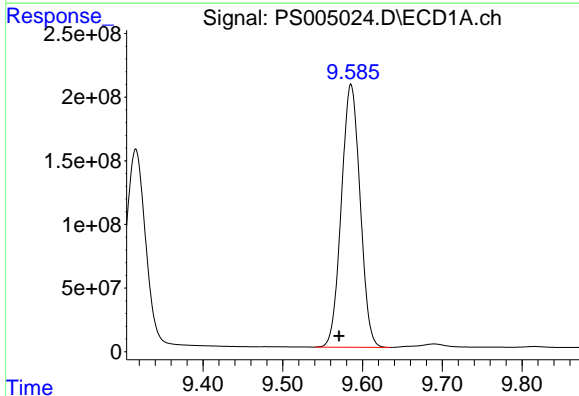


#15 Picloram
 R.T.: 9.145 min
 Delta R.T.: 0.006 min
 Response: 3973144733
 Conc: 400.19 ng/ml

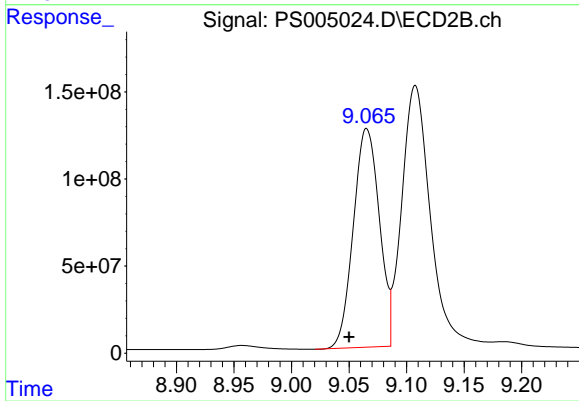
Instrument :
 ECD_S
ClientSampled :
 PB120603BS



#15 Picloram
 R.T.: 9.108 min
 Delta R.T.: 0.012 min
 Response: 2519703156
 Conc: 369.39 ng/ml



#16 DCPA
 R.T.: 9.586 min
 Delta R.T.: 0.015 min
 Response: 3372299937
 Conc: 347.32 ng/ml



#16 DCPA
 R.T.: 9.065 min
 Delta R.T.: 0.015 min
 Response: 1979469512
 Conc: 300.17 ng/ml