

Data Path : Z:\pestpcbsrv\HPCHEM1\ECD_S\Data\PS061419\
 Data File : PS005022.D
 Signal(s) : Signal #1: ECD1A.ch Signal #2: ECD2B.ch
 Acq On : 14 Jun 2019 15:46
 Operator : SM\AJ
 Sample : HSTDCCC750
 Misc :
 ALS Vial : 3 Sample Multiplier: 1

Instrument :
 ECD_S
ClientSampled :
 HSTDCCC750

Manual Integrations
APPROVED
 Ankita
 6/18/2019 10:00:01 AM

Integration File signal 1: autoint1.e
 Integration File signal 2: autoint2.e
 Quant Time: Jun 14 16:56:55 2019
 Quant Method : Z:\pestpcbsrv\HPCHEM1\ECD_S\Method\PS061219.M
 Quant Title : 8080.M
 QLast Update : Fri Jun 14 09:57:49 2019
 Response via : Initial Calibration
 Integrator: ChemStation

Volume Inj. : 2 µl
 Signal #1 Phase : Rtx-CLPesticides Signal #2 Phase: Rtx-CLPesticides2
 Signal #1 Info : 30M x 0.32mm x0.5 Signal #2 Info : 30M x 0.32mm x 0.25µm

Compound	RT#1	RT#2	Resp#1	Resp#2	ng/ml	ng/ml

System Monitoring Compounds						
4) S 2,4-DCAA	5.575	5.288	974.9E6	724.8E6	739.767	726.572
Target Compounds						
1) T Dalapon	2.102	1.798	1147.8E6	798.5E6	658.930	611.590
2) T 3,5-DICHL...	4.923	4.580	1277.4E6	864.8E6	677.709	675.710
3) T 4-Nitroph...	5.421	4.963	344.1E6	325.6E6	755.522m	718.136
5) T DICAMBA	5.734	5.421	3855.1E6	2616.6E6	681.151	681.316
6) T MCPP	5.894	5.511	309.0E6	198.1E6	69.284	68.574
7) T MCPA	6.031	5.696	402.1E6	283.9E6	64.158	67.344
8) T DICHLORPROP	6.374	5.977	946.5E6	660.9E6	676.552	680.441
9) T 2,4-D	6.590	6.250	974.9E6	744.2E6	722.469	695.434
10) T Pentachlo...	6.860	6.627	13282.3E6	8840.0E6	690.437	686.121
11) T 2,4,5-TP ...	7.398	6.989	5434.3E6	3674.9E6	691.639	686.544
12) T 2,4,5-T	7.671	7.351	5458.4E6	3351.7E6	683.112	710.619
13) T 2,4-DB	8.204	7.840	704.6E6	459.9E6	767.510	724.686
14) T DINOSEB	9.304	8.154	4334.5E6	2624.9E6	661.019	675.718
15) T Picloram	9.132	9.096	6637.0E6	4375.0E6	668.503	641.380
16) T DCPA	9.575	9.055	6775.3E6	4623.8E6	697.796	701.157

(f)=RT Delta > 1/2 Window (#)=Amounts differ by > 25% (m)=manual int.

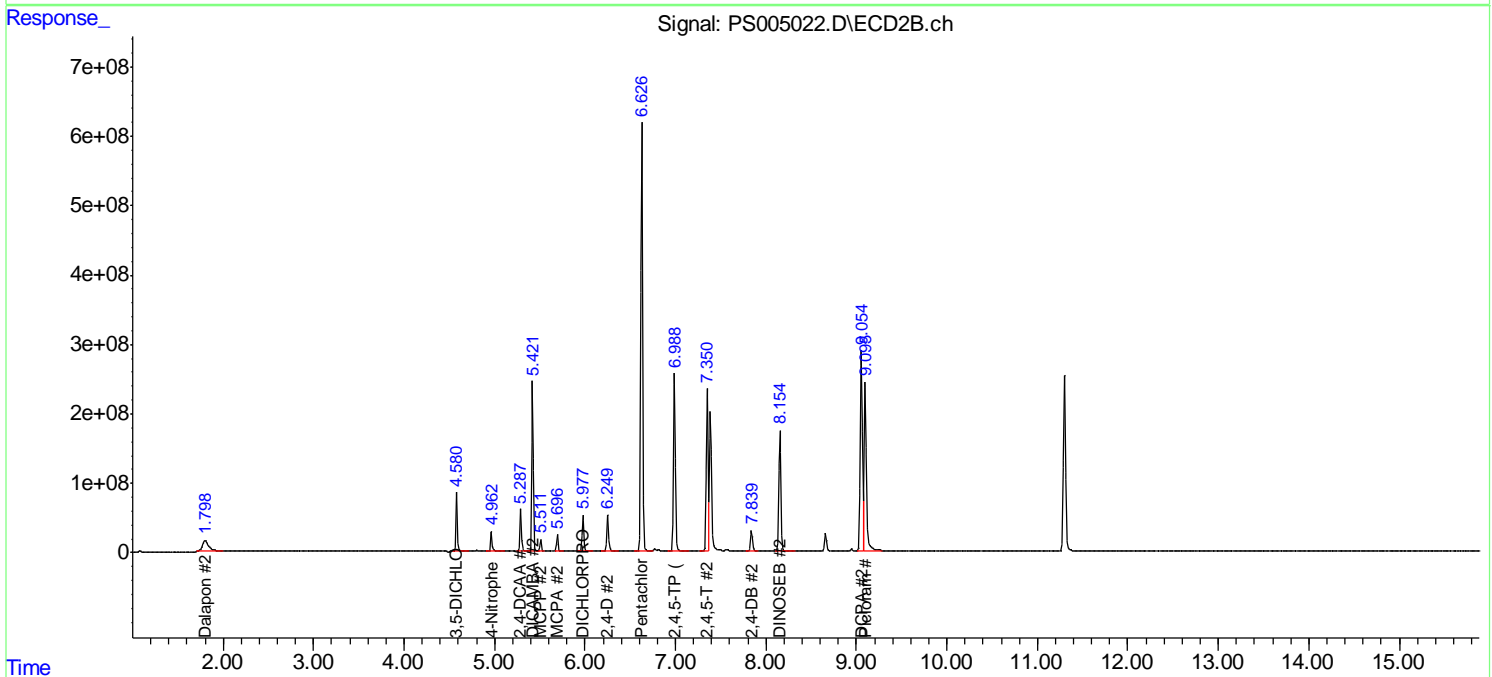
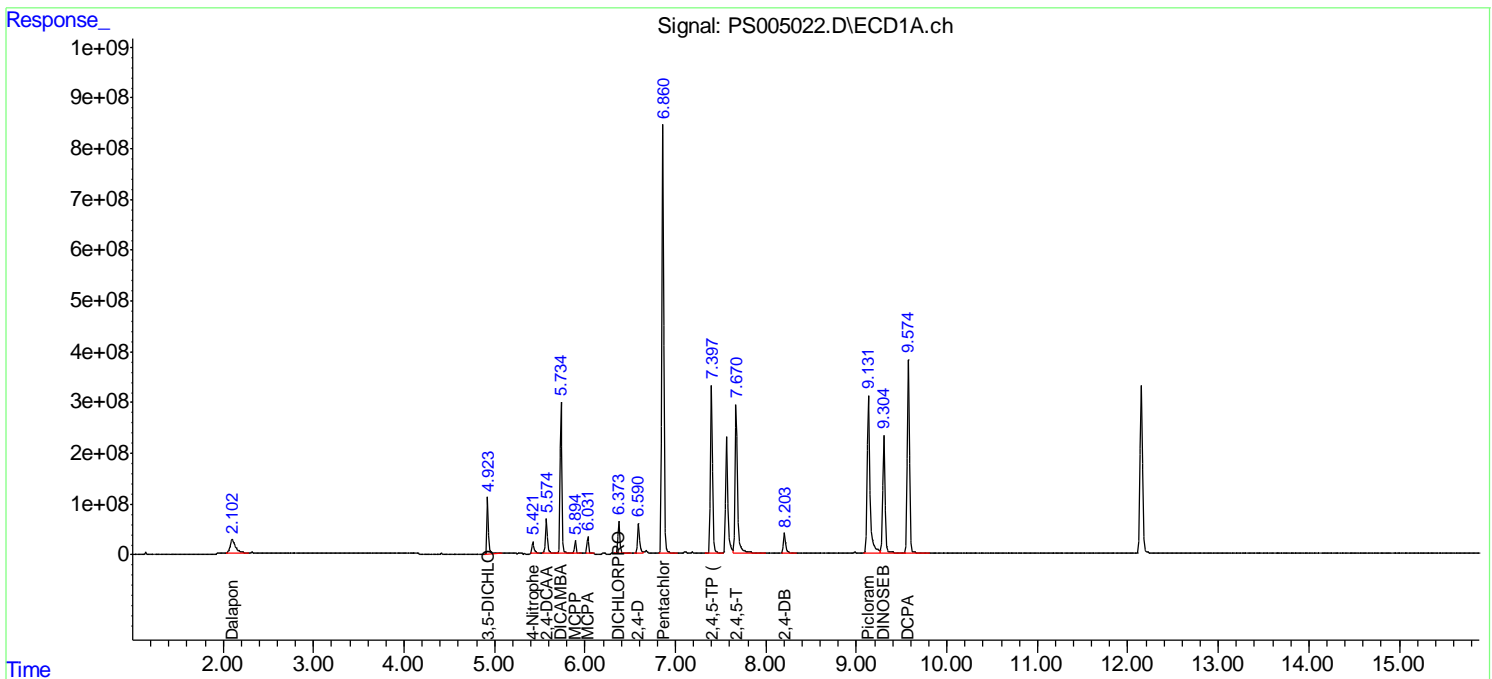
Data Path : Z:\pestpcbsrv\HPCHEM1\ECD_S\Data\PS061419\
 Data File : PS005022.D
 Signal(s) : Signal #1: ECD1A.ch Signal #2: ECD2B.ch
 Acq On : 14 Jun 2019 15:46
 Operator : SM\AJ
 Sample : HSTDCCC750
 Misc :
 ALS Vial : 3 Sample Multiplier: 1

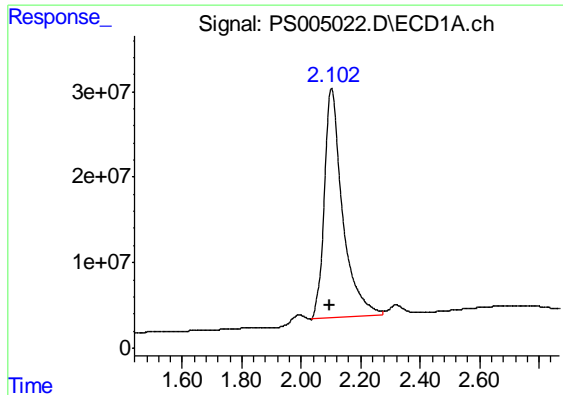
Instrument :
 ECD_S
 ClientSampled :
 HSTDCCC750

Manual Integrations
APPROVED
 Ankita
 6/18/2019 10:00:01 AM

Integration File signal 1: autoint1.e
 Integration File signal 2: autoint2.e
 Quant Time: Jun 14 16:56:55 2019
 Quant Method : Z:\pestpcbsrv\HPCHEM1\ECD_S\Method\PS061219.M
 Quant Title : 8080.M
 QLast Update : Fri Jun 14 09:57:49 2019
 Response via : Initial Calibration
 Integrator: ChemStation

Volume Inj. : 2 µl
 Signal #1 Phase : Rtx-CLPesticides Signal #2 Phase: Rtx-CLPesticides2
 Signal #1 Info : 30M x 0.32mm x0.5 Signal #2 Info : 30M x 0.32mm x 0.25µm





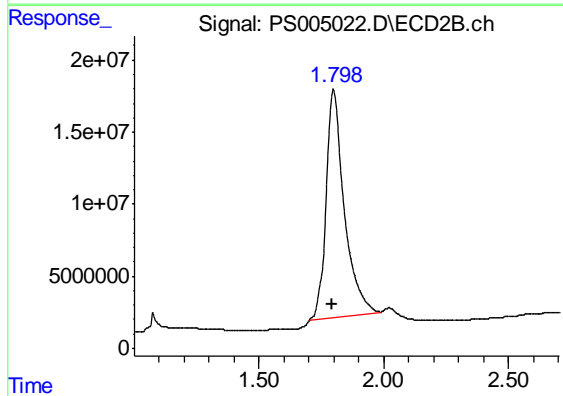
#1 Dalapon

R.T.: 2.102 min
 Delta R.T.: 0.005 min
 Response: 1147797425
 Conc: 658.93 ng/ml

Instrument :
 ECD_S
 ClientSampled :
 HSTDCCC750

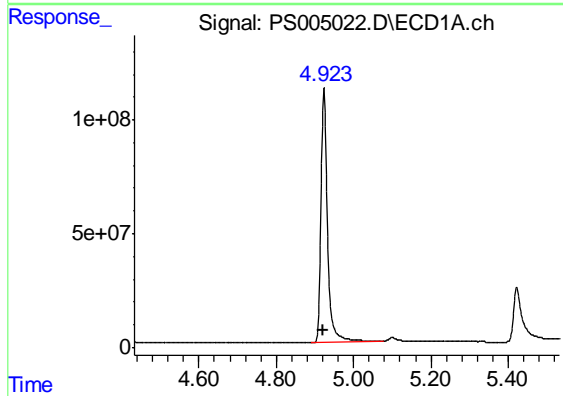
Manual Integrations
 APPROVED

Ankita
 6/18/2019 10:00:01 AM



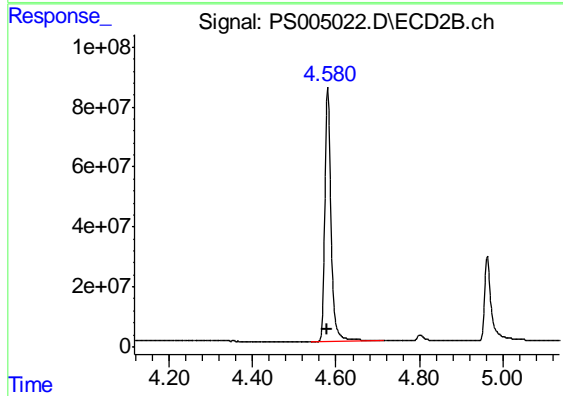
#1 Dalapon

R.T.: 1.798 min
 Delta R.T.: 0.005 min
 Response: 798471433
 Conc: 611.59 ng/ml



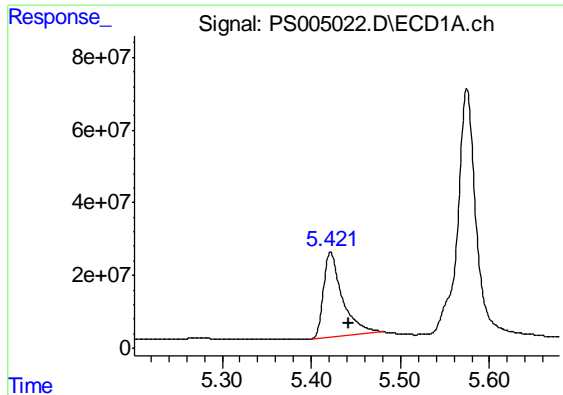
#2 3,5-DICHLOROBENZOIC ACID

R.T.: 4.923 min
 Delta R.T.: 0.002 min
 Response: 1277372608
 Conc: 677.71 ng/ml



#2 3,5-DICHLOROBENZOIC ACID

R.T.: 4.580 min
 Delta R.T.: 0.002 min
 Response: 864766265
 Conc: 675.71 ng/ml



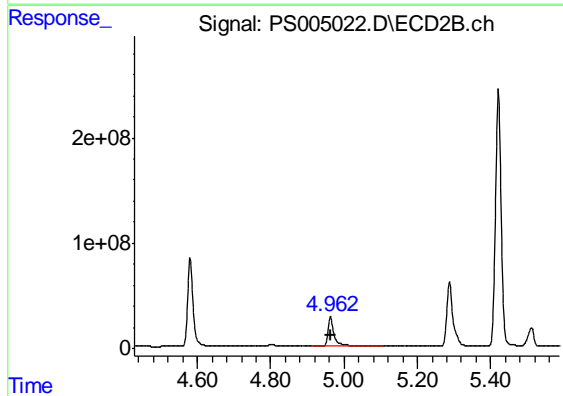
#3 4-Nitrophenol

R.T.: 5.421 min
 Delta R.T.: -0.021 min
 Response: 344123829
 Conc: 755.52 ng/ml m

Instrument :
 ECD_S
 ClientSampleId :
 HSTDCCC750

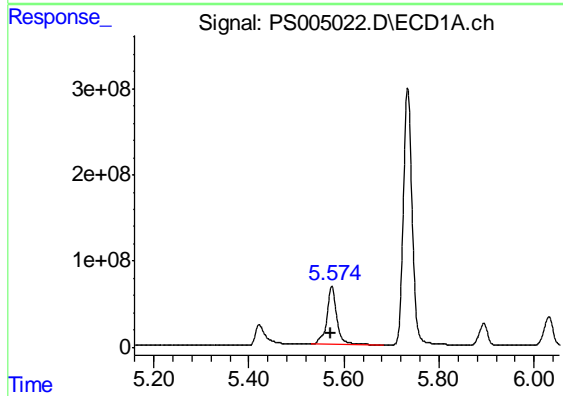
Manual Integrations
 APPROVED

Ankita
 6/18/2019 10:00:01 AM



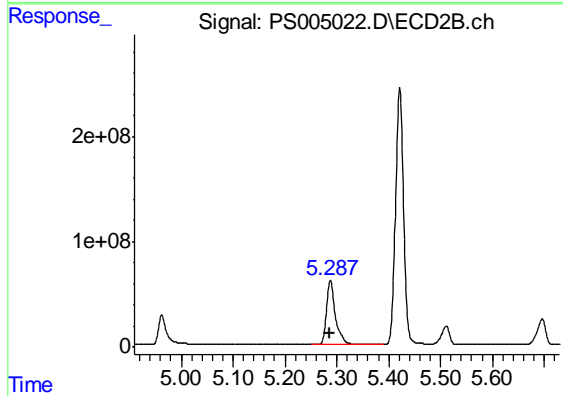
#3 4-Nitrophenol

R.T.: 4.963 min
 Delta R.T.: -0.002 min
 Response: 325649536
 Conc: 718.14 ng/ml



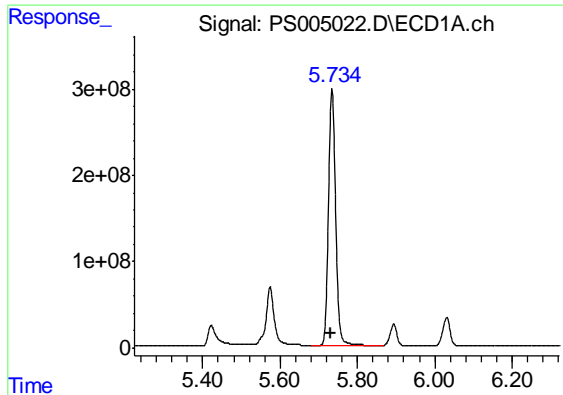
#4 2,4-DCAA

R.T.: 5.575 min
 Delta R.T.: 0.000 min
 Response: 974860927
 Conc: 739.77 ng/ml



#4 2,4-DCAA

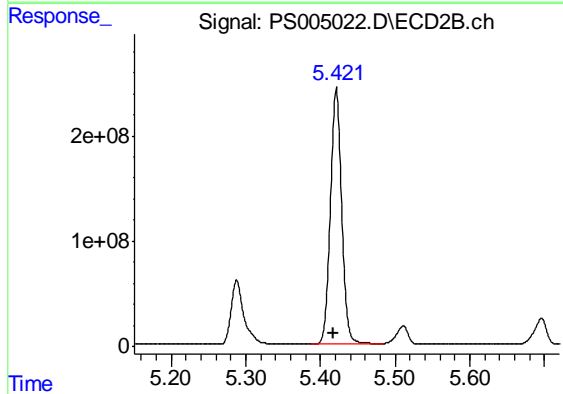
R.T.: 5.288 min
 Delta R.T.: 0.003 min
 Response: 724781854
 Conc: 726.57 ng/ml



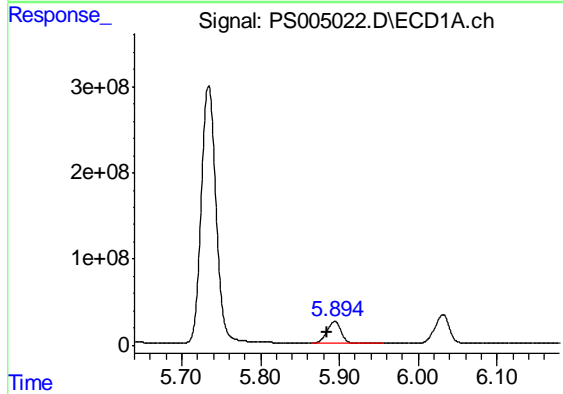
#5 DICAMBA
 R.T.: 5.734 min
 Delta R.T.: 0.003 min
 Response: 3855137345
 Conc: 681.15 ng/ml

Instrument :
 ECD_S
 ClientSampleId :
 HSTDCCC750

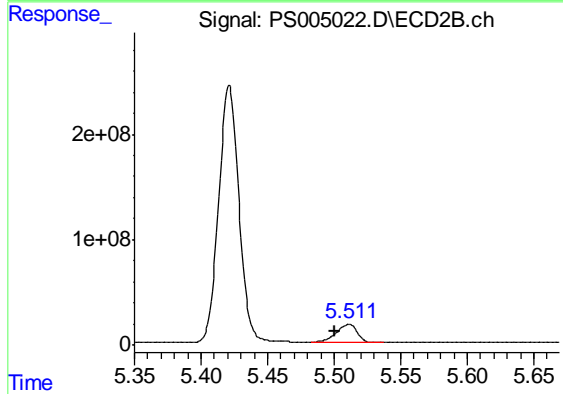
Manual Integrations
 APPROVED
 Ankita
 6/18/2019 10:00:01 AM



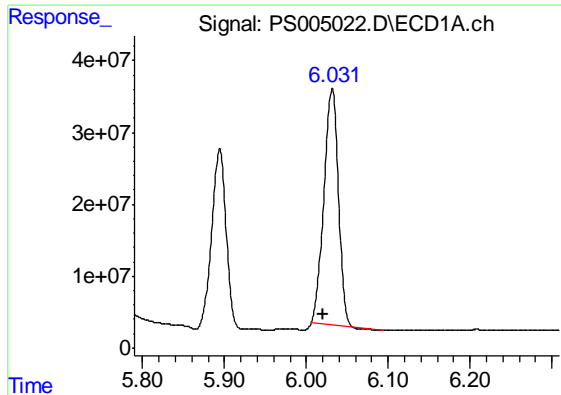
#5 DICAMBA
 R.T.: 5.421 min
 Delta R.T.: 0.004 min
 Response: 2616593816
 Conc: 681.32 ng/ml



#6 MCPP
 R.T.: 5.894 min
 Delta R.T.: 0.009 min
 Response: 309041593
 Conc: 69.28 ug/ml



#6 MCPP
 R.T.: 5.511 min
 Delta R.T.: 0.011 min
 Response: 198141935
 Conc: 68.57 ug/ml



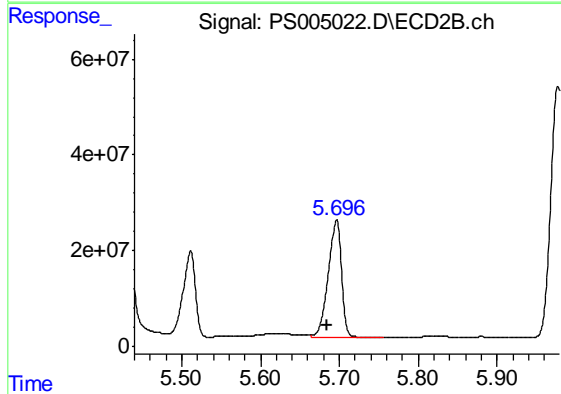
#7 MCPA

R.T.: 6.031 min
 Delta R.T.: 0.011 min
 Response: 402074213
 Conc: 64.16 ug/ml

Instrument :
 ECD_S
 ClientSampled :
 HSTDCCC750

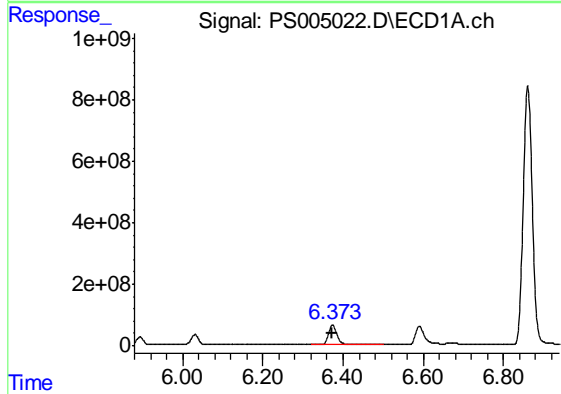
Manual Integrations
 APPROVED

Ankita
 6/18/2019 10:00:01 AM



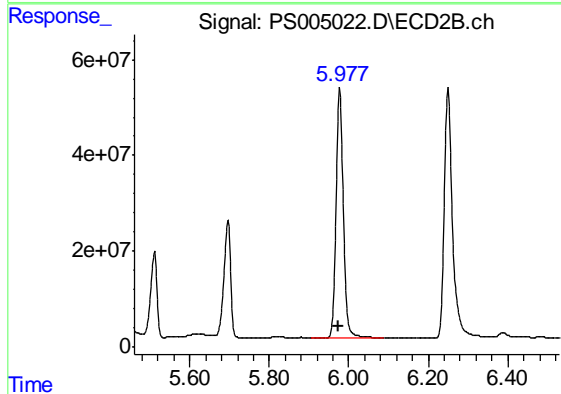
#7 MCPA

R.T.: 5.696 min
 Delta R.T.: 0.012 min
 Response: 283885784
 Conc: 67.34 ug/ml



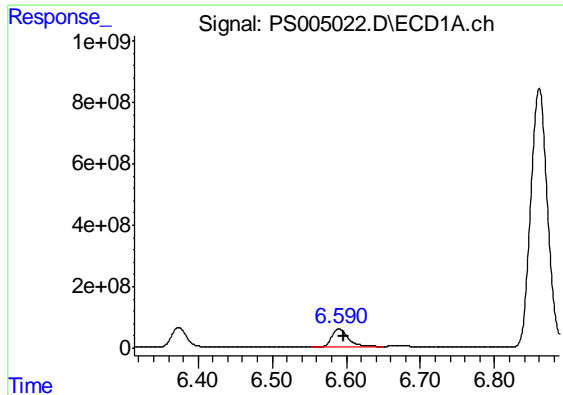
#8 DICHLORPROP

R.T.: 6.374 min
 Delta R.T.: 0.002 min
 Response: 946511260
 Conc: 676.55 ng/ml



#8 DICHLORPROP

R.T.: 5.977 min
 Delta R.T.: 0.004 min
 Response: 660854749
 Conc: 680.44 ng/ml

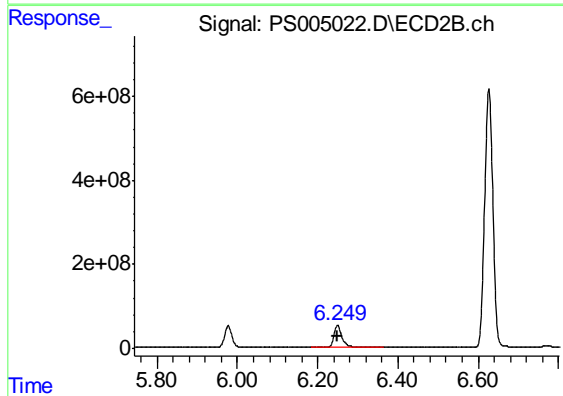


#9 2,4-D

R.T.: 6.590 min
 Delta R.T.: -0.006 min
 Response: 974860597
 Conc: 722.47 ng/ml

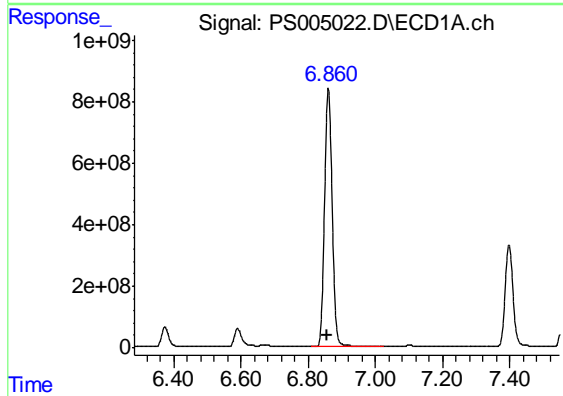
Instrument :
 ECD_S
ClientSampled :
 HSTDCCC750

Manual Integrations
APPROVED
 Ankita
 6/18/2019 10:00:01 AM



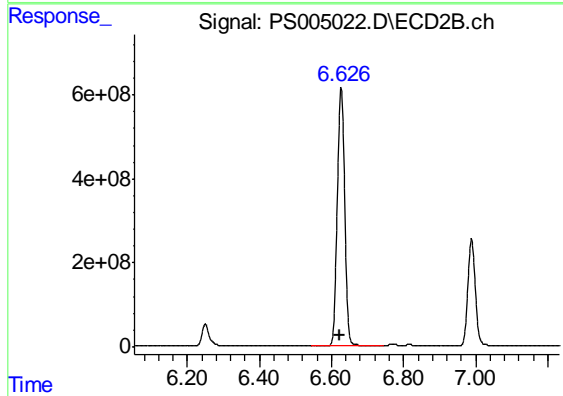
#9 2,4-D

R.T.: 6.250 min
 Delta R.T.: 0.000 min
 Response: 744231489
 Conc: 695.43 ng/ml



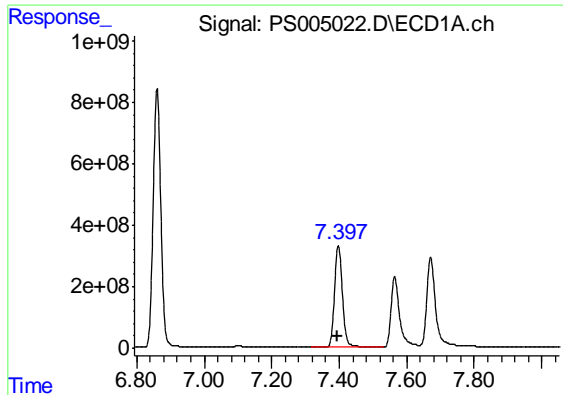
#10 Pentachlorophenol

R.T.: 6.860 min
 Delta R.T.: 0.004 min
 Response: 13282279074
 Conc: 690.44 ng/ml



#10 Pentachlorophenol

R.T.: 6.627 min
 Delta R.T.: 0.005 min
 Response: 8839983417
 Conc: 686.12 ng/ml



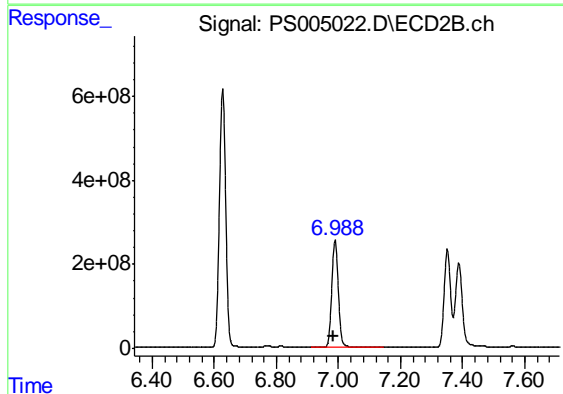
#11 2,4,5-TP (SILVEX)

R.T.: 7.398 min
 Delta R.T.: 0.003 min
 Response: 5434311477
 Conc: 691.64 ng/ml

Instrument :
 ECD_S
 ClientSampleId :
 HSTDCCC750

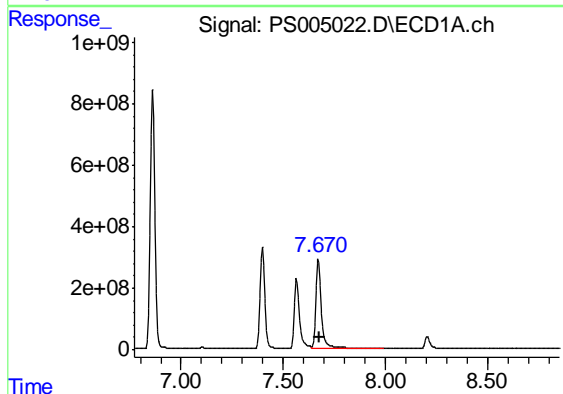
Manual Integrations
 APPROVED

Ankita
 6/18/2019 10:00:01 AM



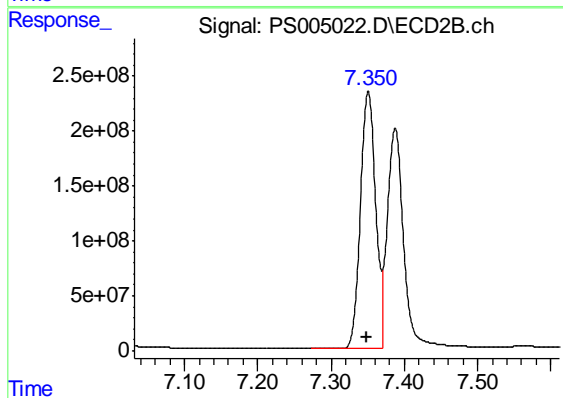
#11 2,4,5-TP (SILVEX)

R.T.: 6.989 min
 Delta R.T.: 0.004 min
 Response: 3674859326
 Conc: 686.54 ng/ml



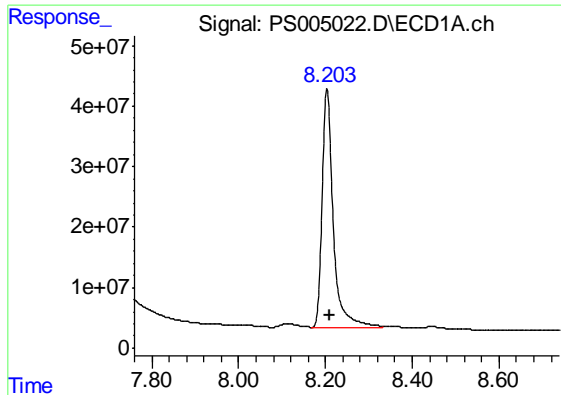
#12 2,4,5-T

R.T.: 7.671 min
 Delta R.T.: -0.003 min
 Response: 5458356415
 Conc: 683.11 ng/ml



#12 2,4,5-T

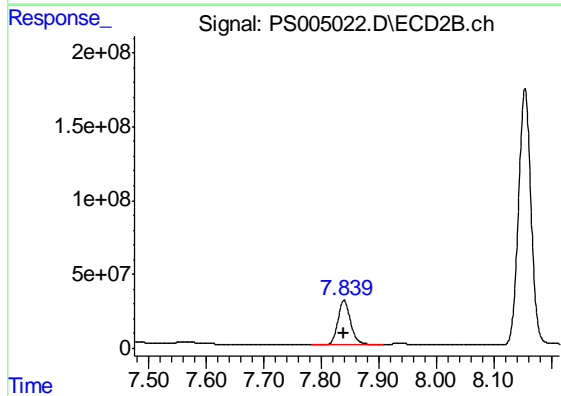
R.T.: 7.351 min
 Delta R.T.: 0.002 min
 Response: 3351725021
 Conc: 710.62 ng/ml



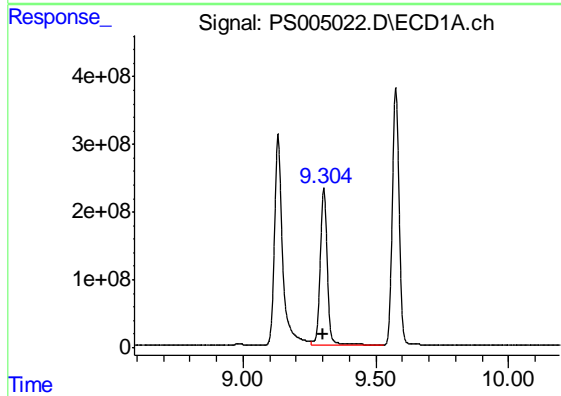
#13 2,4-DB
 R.T.: 8.204 min
 Delta R.T.: -0.005 min
 Response: 704562967
 Conc: 767.51 ng/ml

Instrument :
 ECD_S
ClientSampled :
 HSTDCCC750

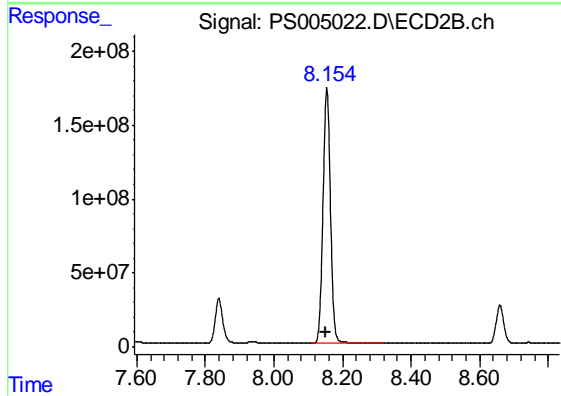
Manual Integrations
APPROVED
 Ankita
 6/18/2019 10:00:01 AM



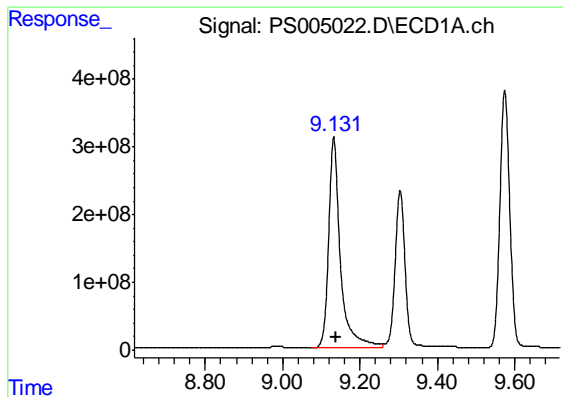
#13 2,4-DB
 R.T.: 7.840 min
 Delta R.T.: 0.001 min
 Response: 459915529
 Conc: 724.69 ng/ml



#14 DINOSEB
 R.T.: 9.304 min
 Delta R.T.: 0.004 min
 Response: 4334512589
 Conc: 661.02 ng/ml



#14 DINOSEB
 R.T.: 8.154 min
 Delta R.T.: 0.005 min
 Response: 2624869096
 Conc: 675.72 ng/ml



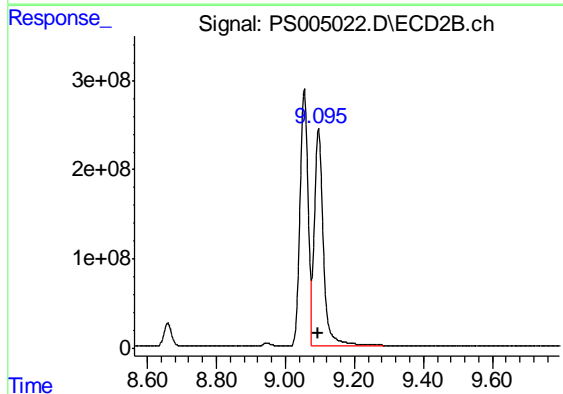
#15 Picloram

R.T.: 9.132 min
 Delta R.T.: -0.007 min
 Response: 6636974539
 Conc: 668.50 ng/ml

Instrument :
 ECD_S
 ClientSampled :
 HSTDCCC750

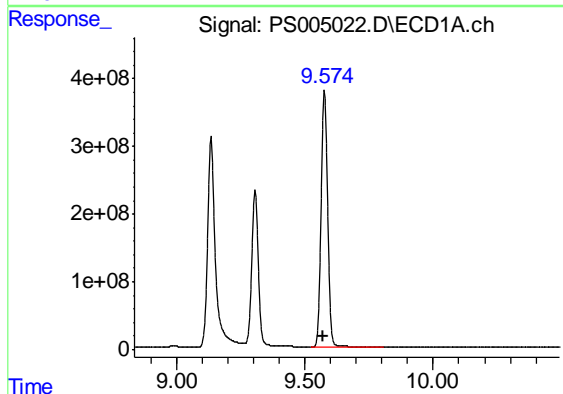
Manual Integrations
 APPROVED

Ankita
 6/18/2019 10:00:01 AM



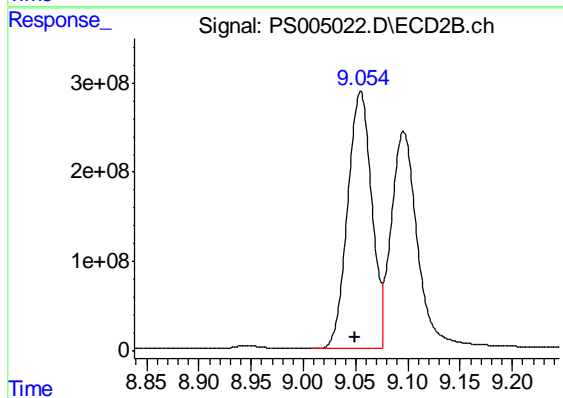
#15 Picloram

R.T.: 9.096 min
 Delta R.T.: 0.000 min
 Response: 4374970049
 Conc: 641.38 ng/ml



#16 DCPA

R.T.: 9.575 min
 Delta R.T.: 0.004 min
 Response: 6775251242
 Conc: 697.80 ng/ml



#16 DCPA

R.T.: 9.055 min
 Delta R.T.: 0.005 min
 Response: 4623752002
 Conc: 701.16 ng/ml