

Data Path : Z:\pestpcbsrv\HPCHEM1\ECD_S\Data\PS062119\
 Data File : PS005163.D
 Signal(s) : Signal #1: ECD1A.ch Signal #2: ECD2B.ch
 Acq On : 21 Jun 2019 14:15
 Operator : SM\AJ
 Sample : PB120788TB
 Misc :
 ALS Vial : 6 Sample Multiplier: 1

Instrument :
 ECD_S
 ClientSampleId :

Integration File signal 1: autoint1.e
 Integration File signal 2: autoint2.e
 Quant Time: Jun 21 22:56:53 2019
 Quant Method : Z:\pestpcbsrv\HPCHEM1\ECD_S\Method\PS061919.M
 Quant Title : 8080.M
 QLast Update : Thu Jun 20 11:04:04 2019
 Response via : Initial Calibration
 Integrator: ChemStation

Volume Inj. : 2 µl
 Signal #1 Phase : Rtx-CLPesticides Signal #2 Phase: Rtx-CLPesticides2
 Signal #1 Info : 30M x 0.32mm x0.5 Signal #2 Info : 30M x 0.32mm x 0.25µm

Compound	RT#1	RT#2	Resp#1	Resp#2	ng/ml	ng/ml

System Monitoring Compounds						
4) S 2,4-DCAA	5.570	5.284	847.6E6	577.9E6	577.403	576.584
Target Compounds						
1) T Dalapon	2.076	1.765	68086890	59713849	36.938	45.270
2) T 3,5-DICHL...	0.000	4.604	0	8450384	N.D.	6.408
3) T 4-Nitroph...	5.473	0.000	9903560	0	13.673	N.D. #
5) T DICAMBA	5.669	0.000	9752044	0	1.709	N.D. #
7) T MCPA	6.062	5.676	20466638	18711492	3.259	4.619 #
8) T DICHLORPROP	0.000	5.976	0	36545017	N.D.	37.849
9) T 2,4-D	6.531	0.000	17877009	0	11.499	N.D. #
10) T Pentachlo...	6.857	6.626	15675789	17561210	<MDL	1.366 #
13) T 2,4-DB	8.216	7.846	213.6E6	231.6E6	183.917	354.748 #
15) T Picloram	0.000	9.104	0	2139923	N.D.	<MDL
16) T DCPA	0.000	9.104	0	2139923	N.D.	<MDL

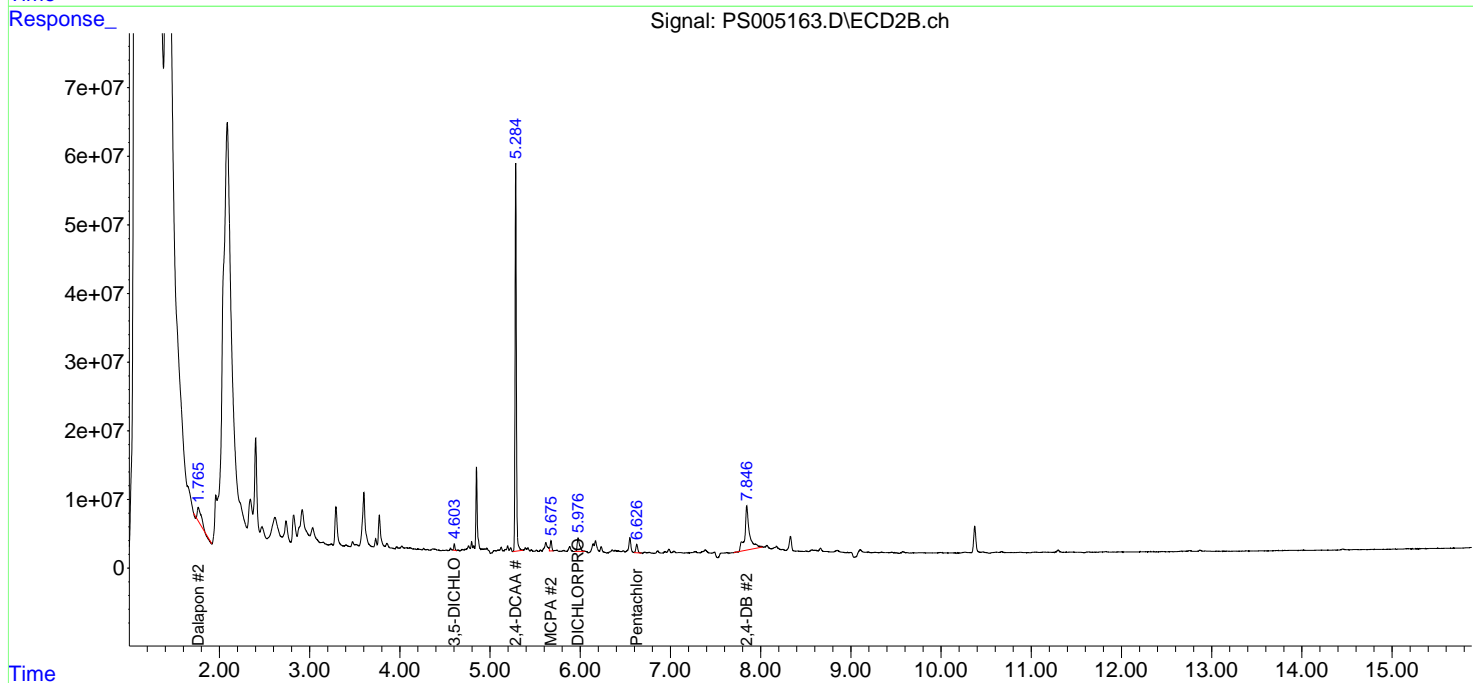
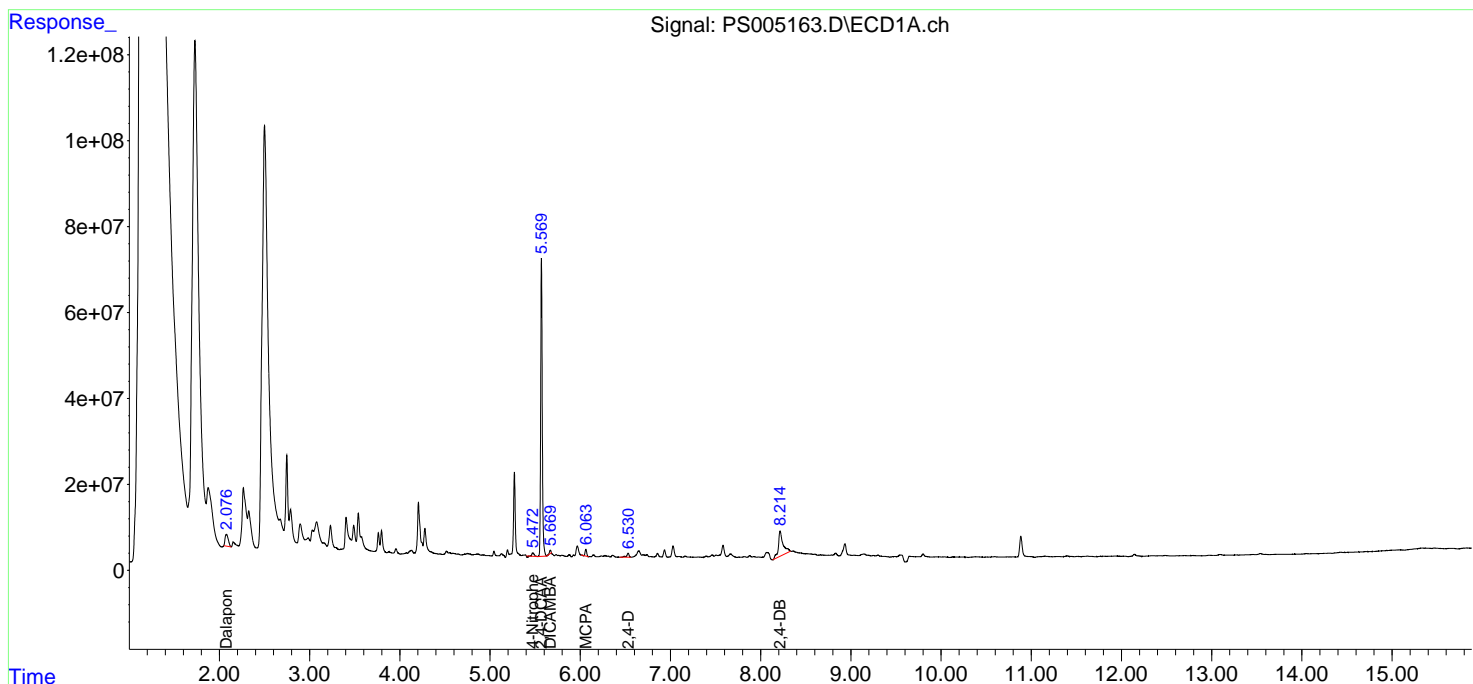
(f)=RT Delta > 1/2 Window (#)=Amounts differ by > 25% (m)=manual int.

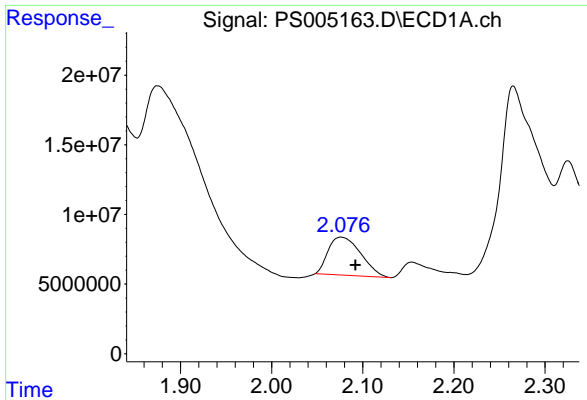
Data Path : Z:\pestpcbsrv\HPCHEM1\ECD_S\Data\PS062119\
 Data File : PS005163.D
 Signal(s) : Signal #1: ECD1A.ch Signal #2: ECD2B.ch
 Acq On : 21 Jun 2019 14:15
 Operator : SM\AJ
 Sample : PB120788TB
 Misc :
 ALS Vial : 6 Sample Multiplier: 1

Instrument :
 ECD_S
 ClientSampled :

Integration File signal 1: autoint1.e
 Integration File signal 2: autoint2.e
 Quant Time: Jun 21 22:56:53 2019
 Quant Method : Z:\pestpcbsrv\HPCHEM1\ECD_S\Method\PS061919.M
 Quant Title : 8080.M
 QLast Update : Thu Jun 20 11:04:04 2019
 Response via : Initial Calibration
 Integrator: ChemStation

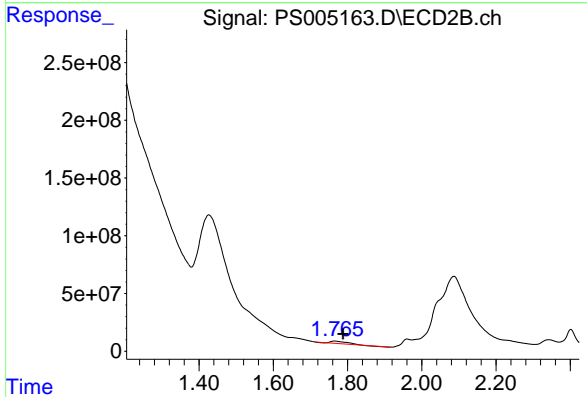
Volume Inj. : 2 µl
 Signal #1 Phase : Rtx-CLPesticides Signal #2 Phase: Rtx-CLPesticides2
 Signal #1 Info : 30M x 0.32mm x 0.5 Signal #2 Info : 30M x 0.32mm x 0.25µm



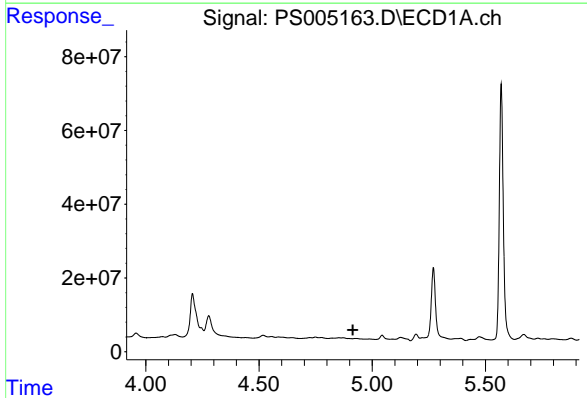


#1 Dalapon
 R.T.: 2.076 min
 Delta R.T.: -0.016 min
 Response: 68086890
 Conc: 36.94 ng/ml

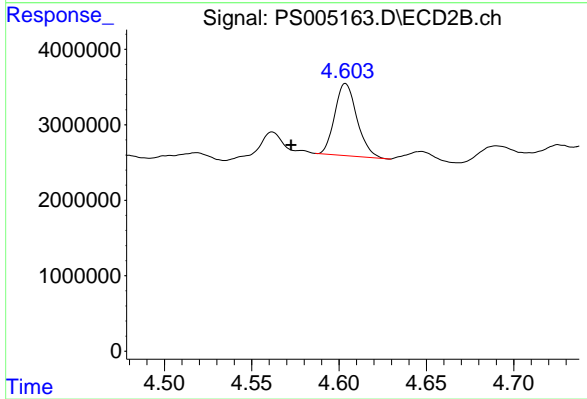
Instrument :
 ECD_S
 ClientSampleId :



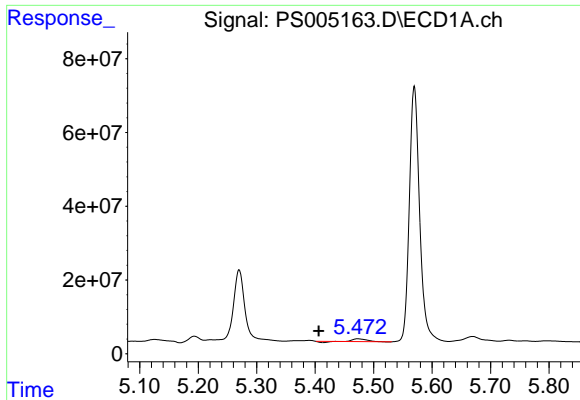
#1 Dalapon
 R.T.: 1.765 min
 Delta R.T.: -0.023 min
 Response: 59713849
 Conc: 45.27 ng/ml



#2 3,5-DICHLOROBENZOIC ACID
 R.T.: 0.000 min
 Exp R.T. : 4.914 min
 Response: 0
 Conc: N.D.

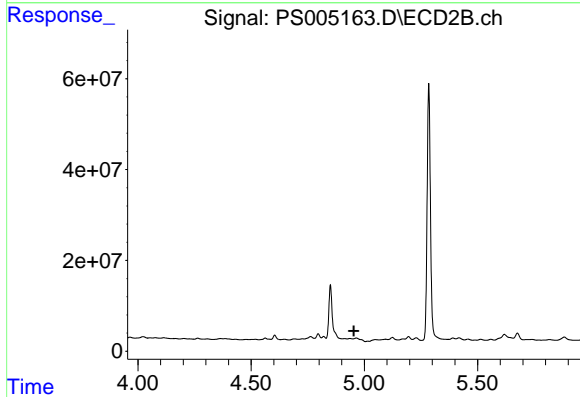


#2 3,5-DICHLOROBENZOIC ACID
 R.T.: 4.604 min
 Delta R.T.: 0.031 min
 Response: 8450384
 Conc: 6.41 ng/ml

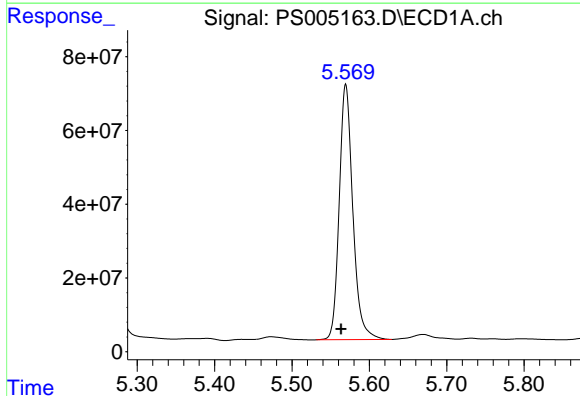


#3 4-Nitrophenol
 R.T.: 5.473 min
 Delta R.T.: 0.067 min
 Response: 9903560
 Conc: 13.67 ng/ml

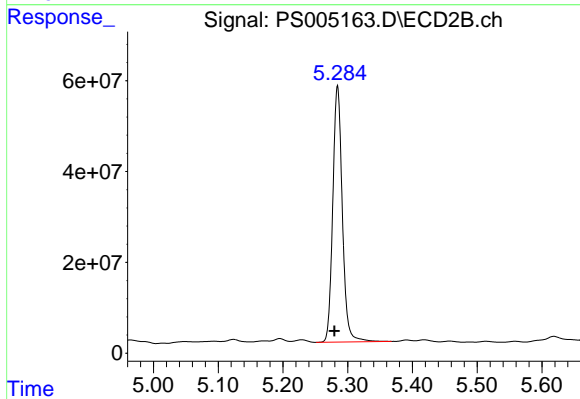
Instrument :
 ECD_S
 ClientSampled :



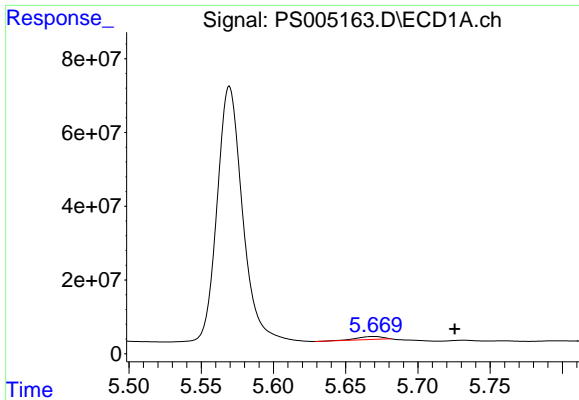
#3 4-Nitrophenol
 R.T.: 0.000 min
 Exp R.T. : 4.953 min
 Response: 0
 Conc: N.D.



#4 2,4-DCAA
 R.T.: 5.570 min
 Delta R.T.: 0.006 min
 Response: 847566122
 Conc: 577.40 ng/ml

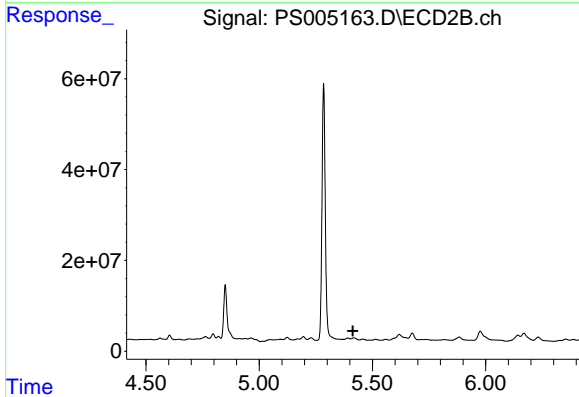


#4 2,4-DCAA
 R.T.: 5.284 min
 Delta R.T.: 0.005 min
 Response: 577949440
 Conc: 576.58 ng/ml

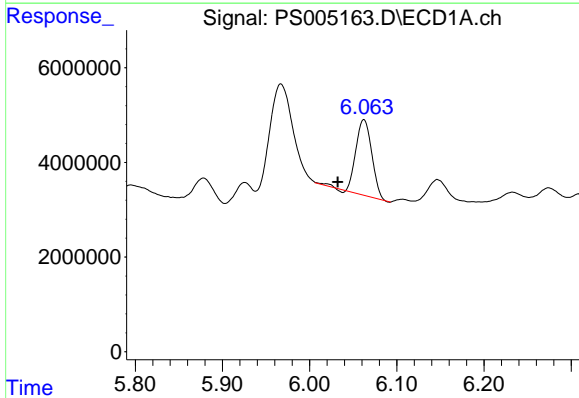


#5 DICAMBA
 R.T.: 5.669 min
 Delta R.T.: -0.056 min
 Response: 9752044
 Conc: 1.71 ng/ml

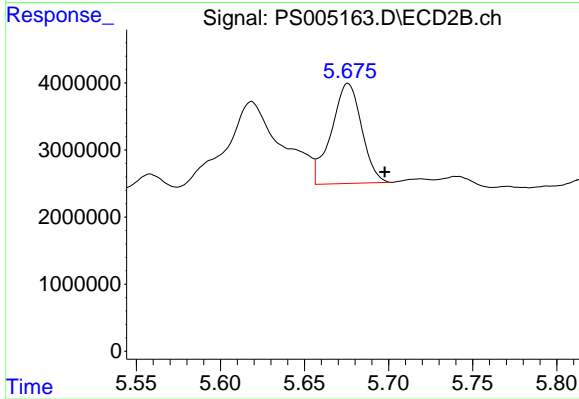
Instrument :
 ECD_S
 ClientSampleId :



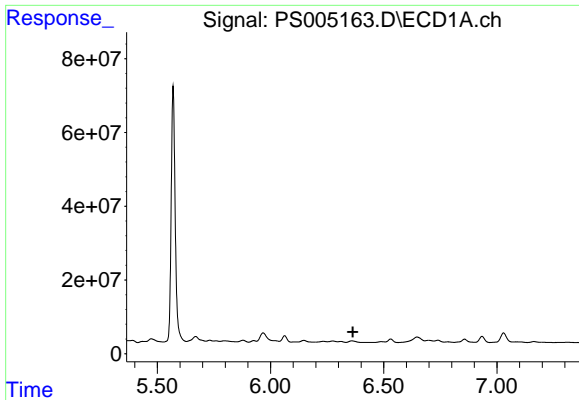
#5 DICAMBA
 R.T.: 0.000 min
 Exp R.T. : 5.414 min
 Response: 0
 Conc: N.D.



#7 MCPA
 R.T.: 6.062 min
 Delta R.T.: 0.030 min
 Response: 20466638
 Conc: 3.26 ug/ml



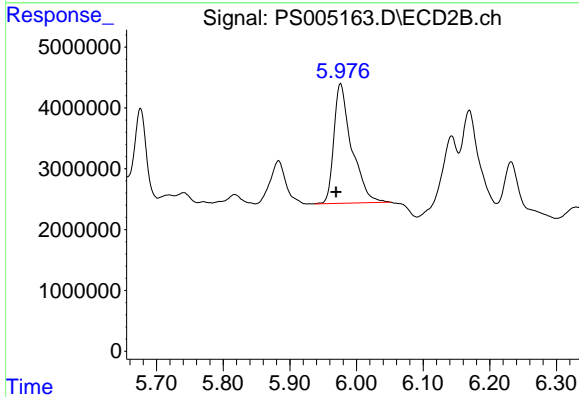
#7 MCPA
 R.T.: 5.676 min
 Delta R.T.: -0.022 min
 Response: 18711492
 Conc: 4.62 ug/ml



#8 DICHLORPROP

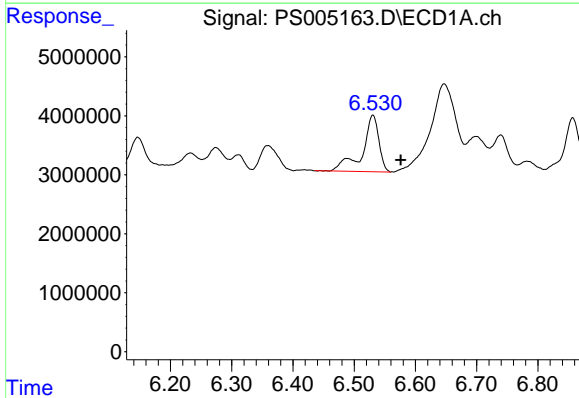
R.T.: 0.000 min
 Exp R.T.: 6.363 min
 Response: 0
 Conc: N.D.

Instrument :
 ECD_S
 ClientSampleId :



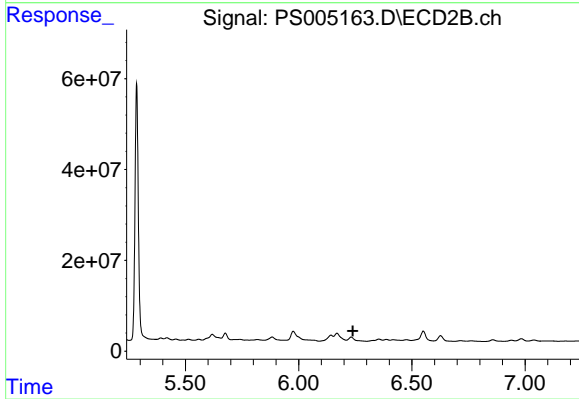
#8 DICHLORPROP

R.T.: 5.976 min
 Delta R.T.: 0.007 min
 Response: 36545017
 Conc: 37.85 ng/ml



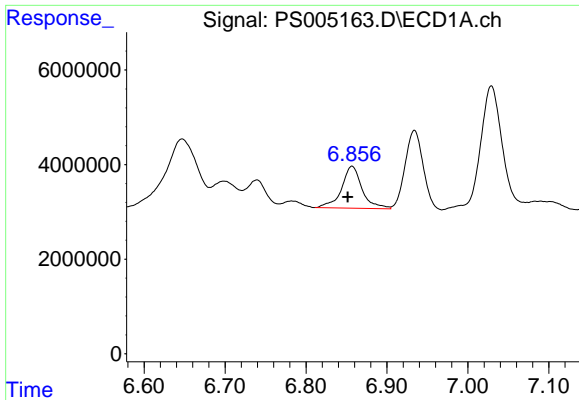
#9 2,4-D

R.T.: 6.531 min
 Delta R.T.: -0.046 min
 Response: 17877009
 Conc: 11.50 ng/ml



#9 2,4-D

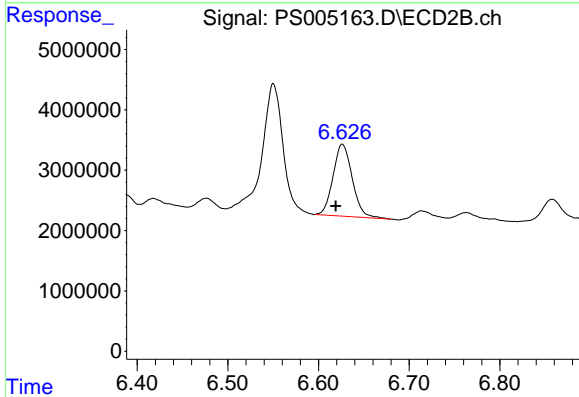
R.T.: 0.000 min
 Exp R.T.: 6.240 min
 Response: 0
 Conc: N.D.



#10 Pentachlorophenol

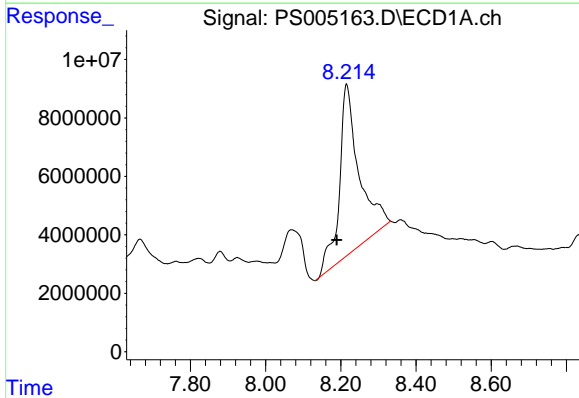
R.T.: 6.857 min
Delta R.T.: 0.005 min
Response: 15675789
Conc: N.D.

Instrument :
ECD_S
ClientSampled :



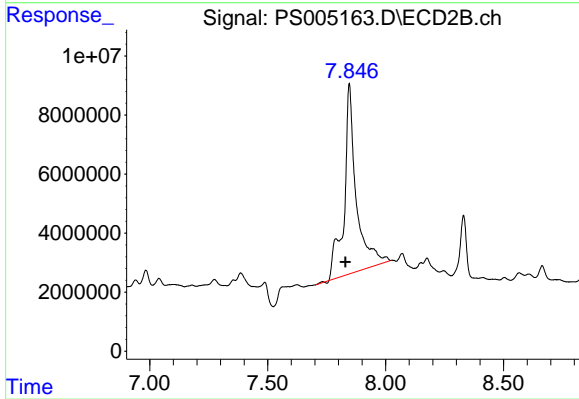
#10 Pentachlorophenol

R.T.: 6.626 min
Delta R.T.: 0.007 min
Response: 17561210
Conc: 1.37 ng/ml



#13 2,4-DB

R.T.: 8.216 min
Delta R.T.: 0.026 min
Response: 213628436
Conc: 183.92 ng/ml



#13 2,4-DB

R.T.: 7.846 min
Delta R.T.: 0.016 min
Response: 231597751
Conc: 354.75 ng/ml