

Data Path : Z:\pestpcbsrv\HPCHEM1\ECD_S\Data\PS062119\
 Data File : PS005181.D
 Signal(s) : Signal #1: ECD1A.ch Signal #2: ECD2B.ch
 Acq On : 21 Jun 2019 20:51
 Operator : SM\AJ
 Sample : K3158-06MSD
 Misc :
 ALS Vial : 22 Sample Multiplier: 1

Instrument :
 ECD_S
 ClientSampleId :

Integration File signal 1: autoint1.e
 Integration File signal 2: autoint2.e
 Quant Time: Jun 21 23:03:07 2019
 Quant Method : Z:\pestpcbsrv\HPCHEM1\ECD_S\Method\PS061919.M
 Quant Title : 8080.M
 QLast Update : Thu Jun 20 11:04:04 2019
 Response via : Initial Calibration
 Integrator: ChemStation

Volume Inj. : 2 µl
 Signal #1 Phase : Rtx-CLPesticides Signal #2 Phase: Rtx-CLPesticides2
 Signal #1 Info : 30M x 0.32mm x0.5 Signal #2 Info : 30M x 0.32mm x 0.25µm

	Compound	RT#1	RT#2	Resp#1	Resp#2	ng/ml	ng/ml

System Monitoring Compounds							
4) S	2,4-DCAA	5.587	5.302	735.1E6	498.2E6	500.790	497.034
Target Compounds							
1) T	Dalapon	2.115	1.816	926.6E6	494.2E6	502.710	374.657 #
2) T	3,5-DICHL...	4.936	4.595	1135.2E6	719.1E6	564.831	545.282
3) T	4-Nitroph...	5.379	4.967	7141132	22577454	9.859	45.024 #
5) T	DICAMBA	5.747	5.435	3010.6E6	2001.0E6	527.736	534.541
6) T	MCP P	5.906	5.524	354.6E6	157.4E6	80.999	56.511 #
7) T	MCPA	6.042	5.708	342.3E6	277.2E6	54.503	68.429 #
8) T	DICHLORPROP	6.385	5.990	798.5E6	531.6E6	558.365	550.577
9) T	2,4-D	6.600	6.261	953.3E6	714.2E6	613.213	640.351
10) T	Pentachlo...	6.872	6.639	11730.0E6	7664.0E6	596.153	596.131
11) T	2,4,5-TP ...	7.409	7.001	4860.3E6	3189.7E6	595.750	598.980
12) T	2,4,5-T	7.681	7.363	4612.6E6	2913.1E6	573.150	571.108
13) T	2,4-DB	8.213	7.851	581.7E6	380.2E6	500.813	582.341
14) T	DINOSEB	9.315	8.167	3369.3E6	2102.1E6	527.133	519.916
15) T	Picloram	9.142	9.068	5142.2E6	2504.4E6	447.490	331.868 #
16) T	DCPA	9.586	9.068	3934.2E6	2504.4E6	394.399	367.894

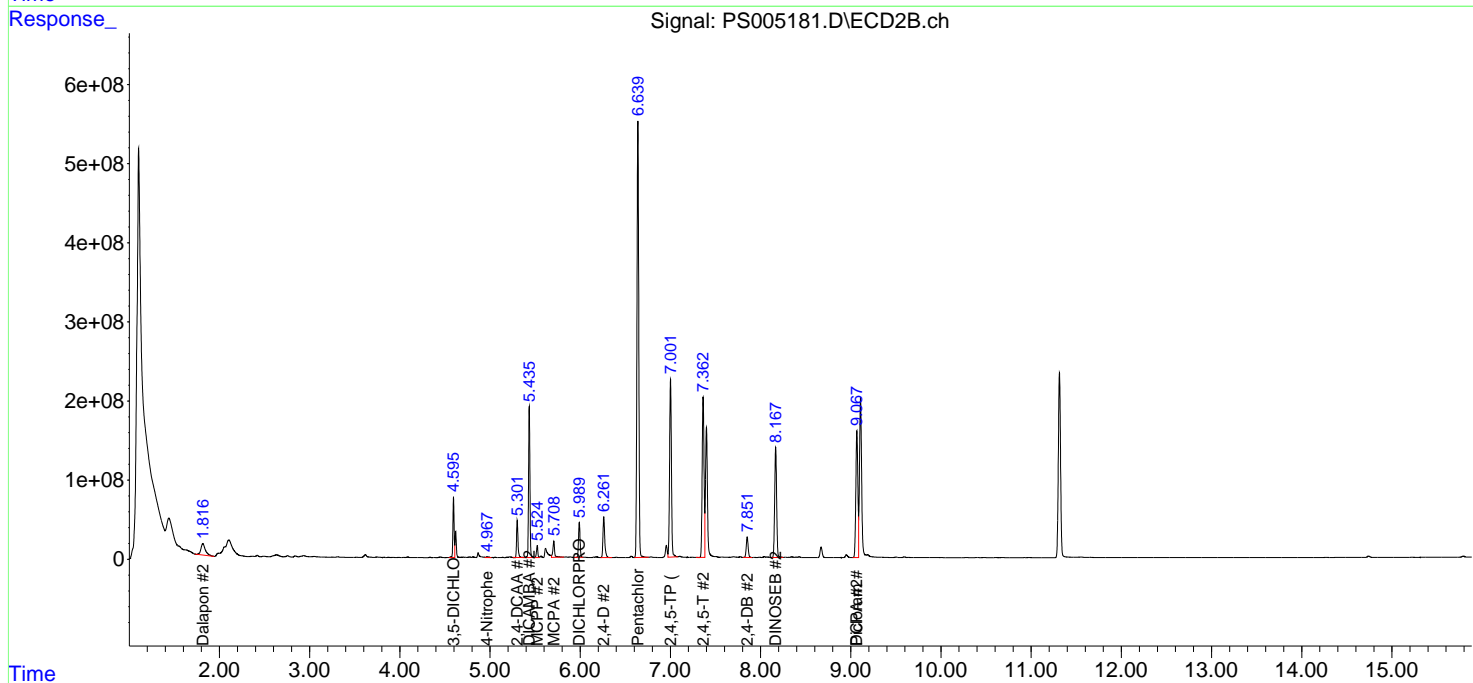
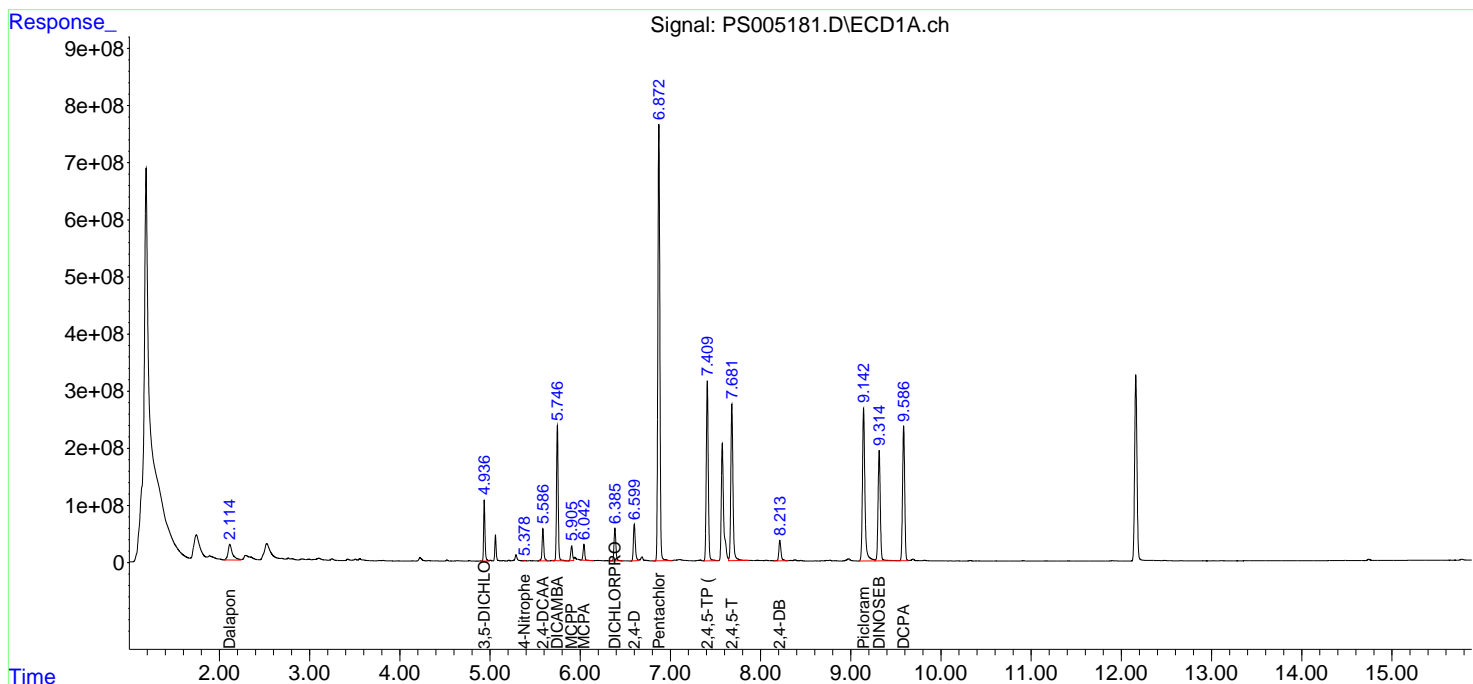
(f)=RT Delta > 1/2 Window (#)=Amounts differ by > 25% (m)=manual int.

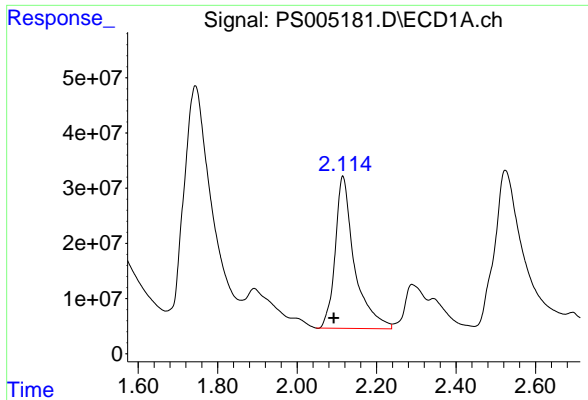
Data Path : Z:\pestpcbsrv\HPCHEM1\ECD_S\Data\PS062119\
 Data File : PS005181.D
 Signal(s) : Signal #1: ECD1A.ch Signal #2: ECD2B.ch
 Acq On : 21 Jun 2019 20:51
 Operator : SM\AJ
 Sample : K3158-06MSD
 Misc :
 ALS Vial : 22 Sample Multiplier: 1

Instrument :
 ECD_S
 ClientSampled :

Integration File signal 1: autoint1.e
 Integration File signal 2: autoint2.e
 Quant Time: Jun 21 23:03:07 2019
 Quant Method : Z:\pestpcbsrv\HPCHEM1\ECD_S\Method\PS061919.M
 Quant Title : 8080.M
 QLast Update : Thu Jun 20 11:04:04 2019
 Response via : Initial Calibration
 Integrator: ChemStation

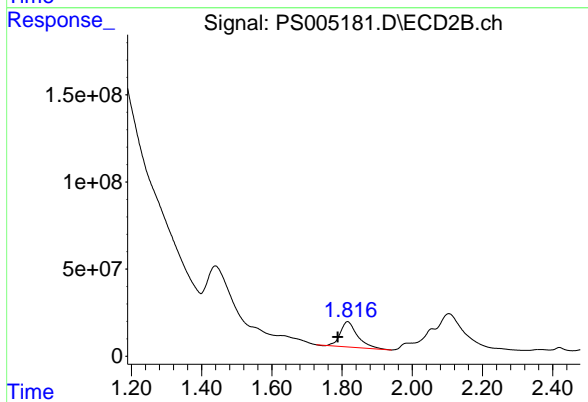
Volume Inj. : 2 µl
 Signal #1 Phase : Rtx-CLPesticides Signal #2 Phase: Rtx-CLPesticides2
 Signal #1 Info : 30M x 0.32mm x0.5 Signal #2 Info : 30M x 0.32mm x 0.25µm



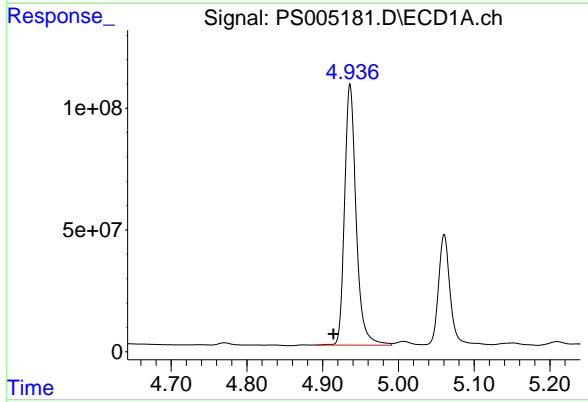


#1 Dalapon
 R.T.: 2.115 min
 Delta R.T.: 0.023 min
 Response: 926643913
 Conc: 502.71 ng/ml

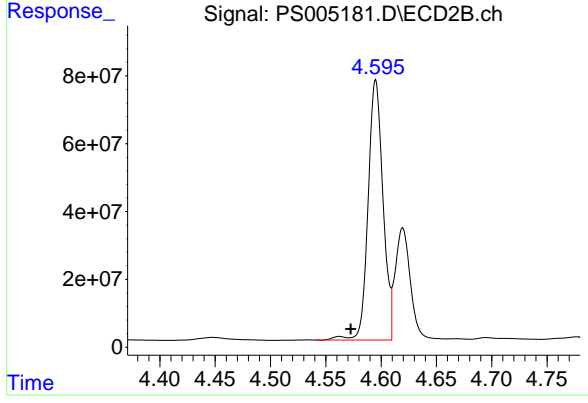
Instrument :
 ECD_S
 ClientSampleId :



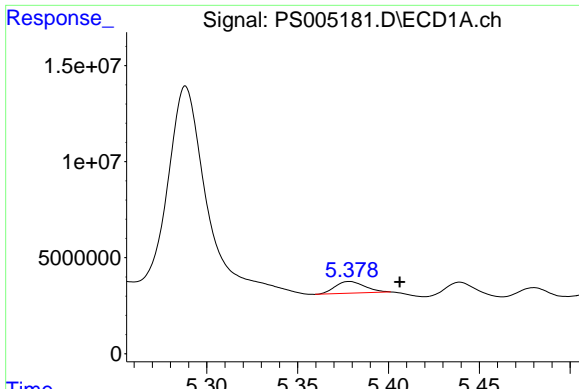
#1 Dalapon
 R.T.: 1.816 min
 Delta R.T.: 0.028 min
 Response: 494197095
 Conc: 374.66 ng/ml



#2 3,5-DICHLOROBENZOIC ACID
 R.T.: 4.936 min
 Delta R.T.: 0.022 min
 Response: 1135150834
 Conc: 564.83 ng/ml

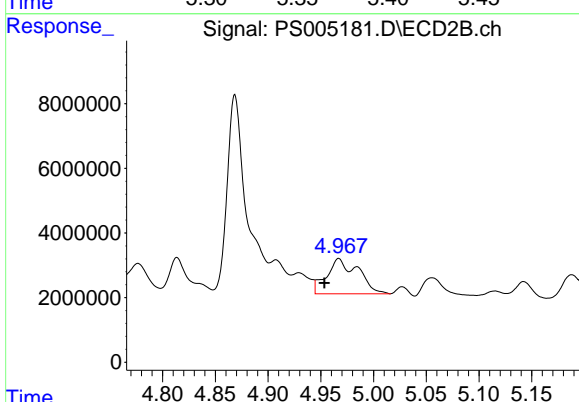


#2 3,5-DICHLOROBENZOIC ACID
 R.T.: 4.595 min
 Delta R.T.: 0.023 min
 Response: 719067981
 Conc: 545.28 ng/ml

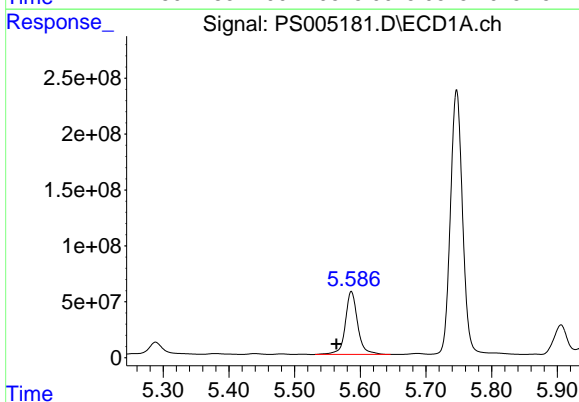


#3 4-Nitrophenol
 R.T.: 5.379 min
 Delta R.T.: -0.028 min
 Response: 7141132
 Conc: 9.86 ng/ml

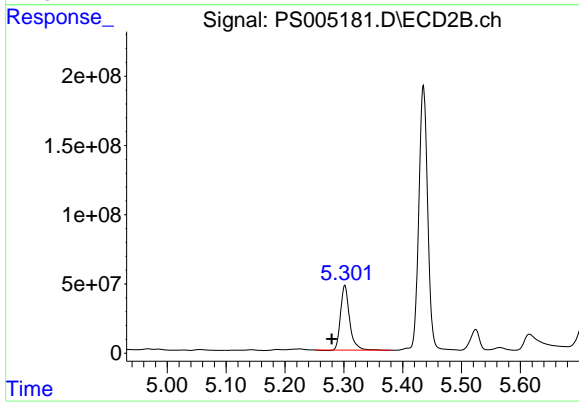
Instrument :
 ECD_S
 ClientSampleId :



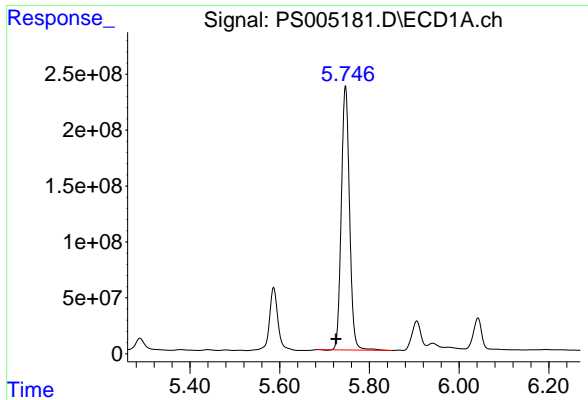
#3 4-Nitrophenol
 R.T.: 4.967 min
 Delta R.T.: 0.014 min
 Response: 22577454
 Conc: 45.02 ng/ml



#4 2,4-DCAA
 R.T.: 5.587 min
 Delta R.T.: 0.023 min
 Response: 735105777
 Conc: 500.79 ng/ml



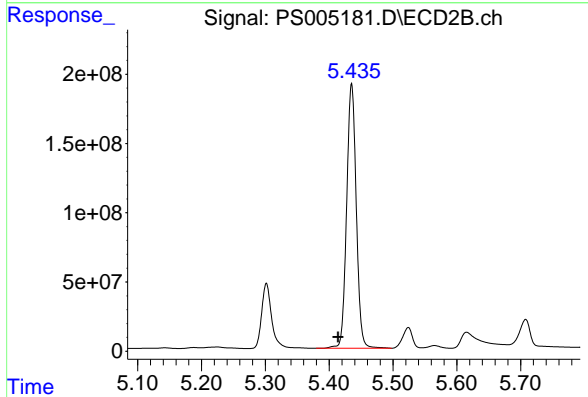
#4 2,4-DCAA
 R.T.: 5.302 min
 Delta R.T.: 0.022 min
 Response: 498211043
 Conc: 497.03 ng/ml



#5 DICAMBA

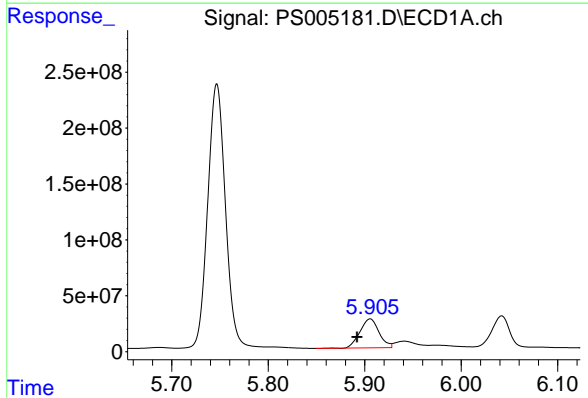
R.T.: 5.747 min
 Delta R.T.: 0.021 min
 Response: 3010596151
 Conc: 527.74 ng/ml

Instrument :
 ECD_S
 ClientSampleId :



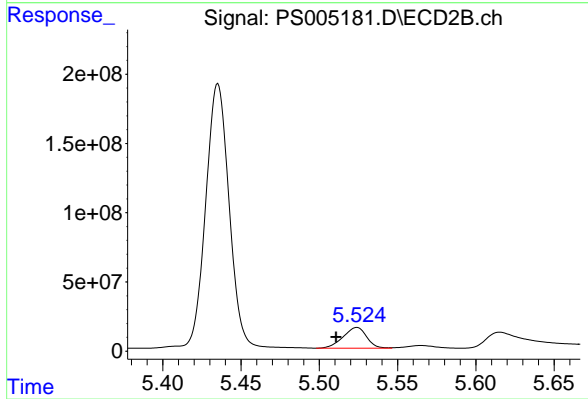
#5 DICAMBA

R.T.: 5.435 min
 Delta R.T.: 0.021 min
 Response: 2000960994
 Conc: 534.54 ng/ml



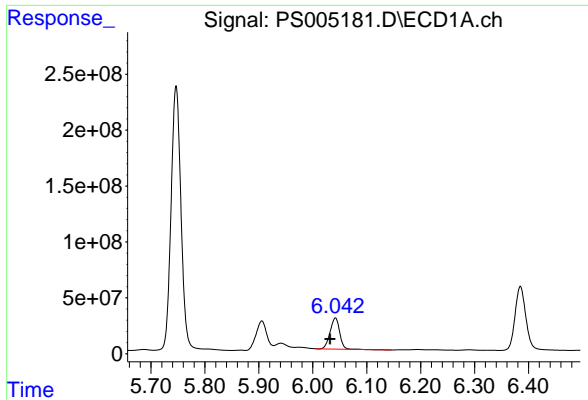
#6 MCPP

R.T.: 5.906 min
 Delta R.T.: 0.013 min
 Response: 354574232
 Conc: 81.00 ug/ml



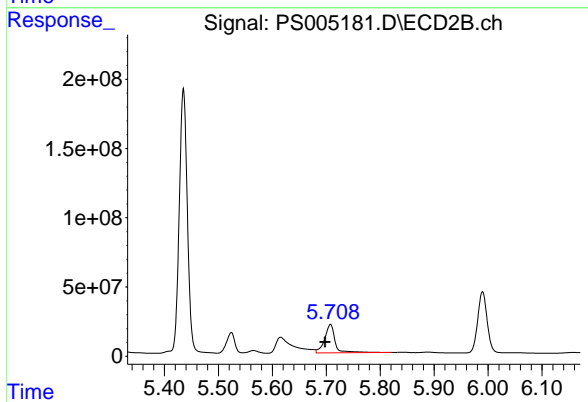
#6 MCPP

R.T.: 5.524 min
 Delta R.T.: 0.013 min
 Response: 157409718
 Conc: 56.51 ug/ml

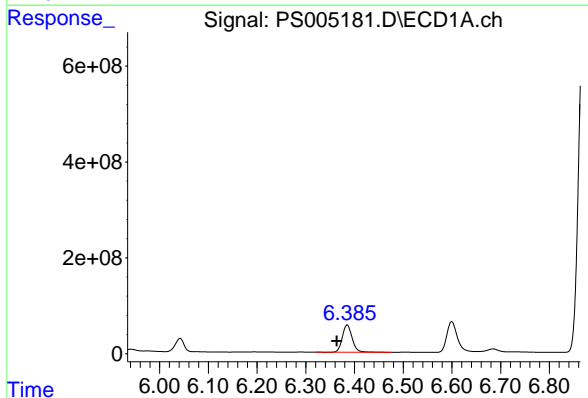


#7 MCPA
 R.T.: 6.042 min
 Delta R.T.: 0.010 min
 Response: 342263244
 Conc: 54.50 ug/ml

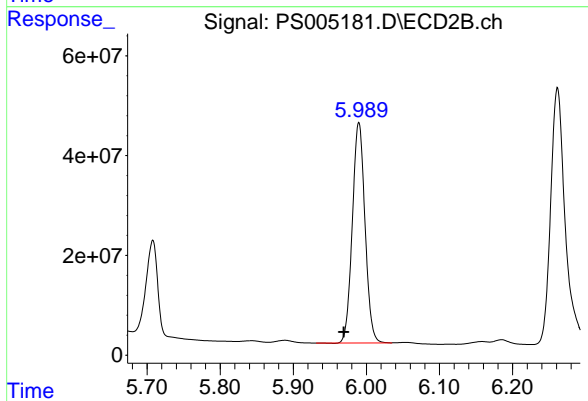
Instrument :
 ECD_S
 ClientSampleId :



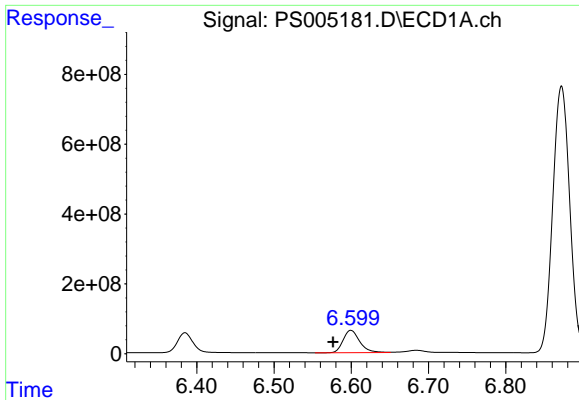
#7 MCPA
 R.T.: 5.708 min
 Delta R.T.: 0.010 min
 Response: 277194706
 Conc: 68.43 ug/ml



#8 DICHLORPROP
 R.T.: 6.385 min
 Delta R.T.: 0.022 min
 Response: 798494641
 Conc: 558.37 ng/ml



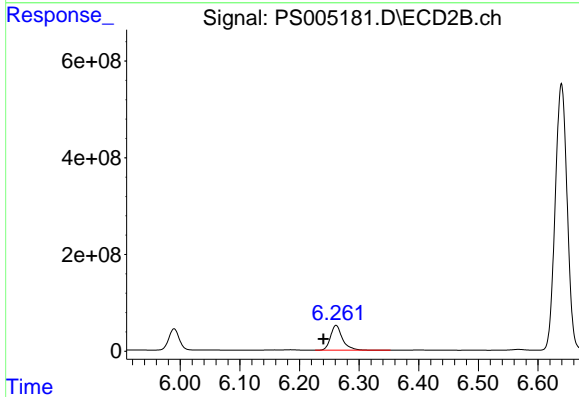
#8 DICHLORPROP
 R.T.: 5.990 min
 Delta R.T.: 0.021 min
 Response: 531603440
 Conc: 550.58 ng/ml



#9 2,4-D

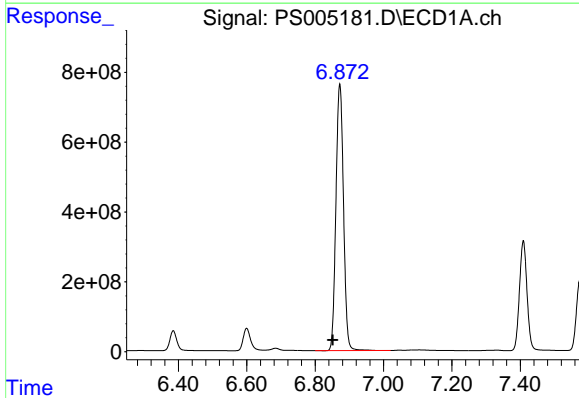
R.T.: 6.600 min
Delta R.T.: 0.023 min
Response: 953301706
Conc: 613.21 ng/ml

Instrument :
ECD_S
ClientSampleId :



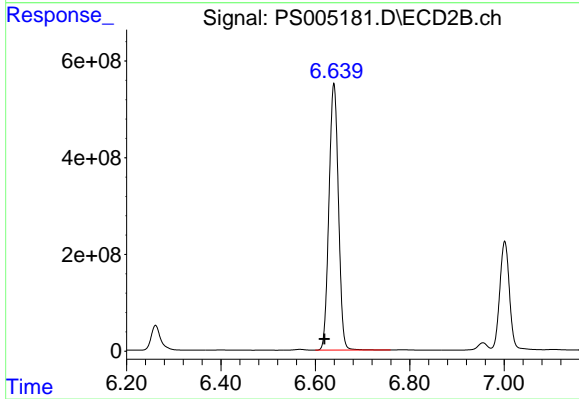
#9 2,4-D

R.T.: 6.261 min
Delta R.T.: 0.022 min
Response: 714171363
Conc: 640.35 ng/ml



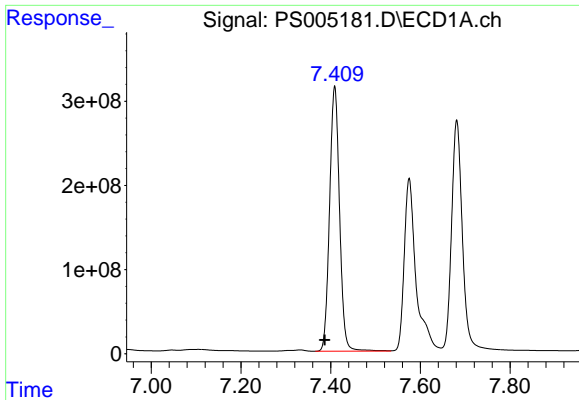
#10 Pentachlorophenol

R.T.: 6.872 min
Delta R.T.: 0.020 min
Response: 11729987047
Conc: 596.15 ng/ml



#10 Pentachlorophenol

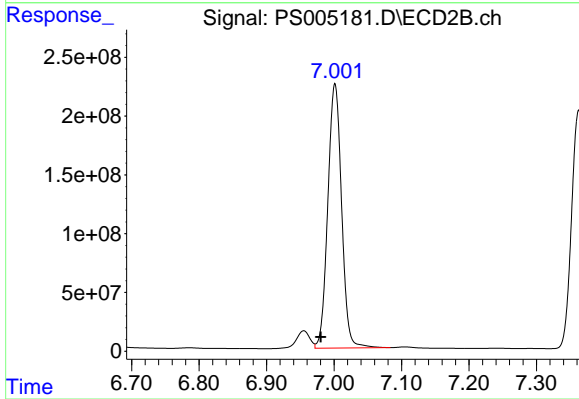
R.T.: 6.639 min
Delta R.T.: 0.020 min
Response: 7664028910
Conc: 596.13 ng/ml



#11 2,4,5-TP (SILVEX)

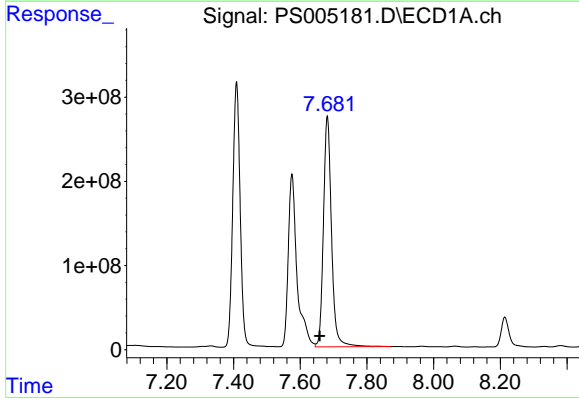
R.T.: 7.409 min
Delta R.T.: 0.022 min
Response: 4860252443
Conc: 595.75 ng/ml

Instrument :
ECD_S
ClientSampled :



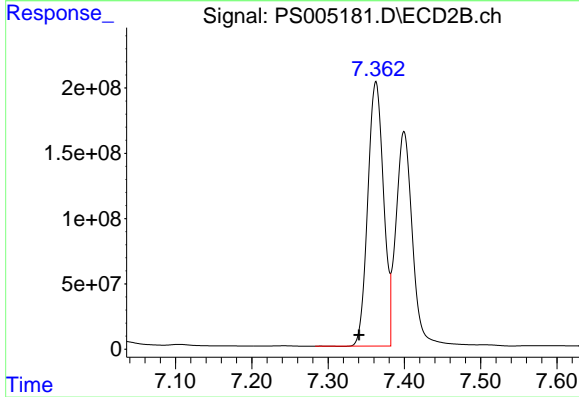
#11 2,4,5-TP (SILVEX)

R.T.: 7.001 min
Delta R.T.: 0.021 min
Response: 3189741641
Conc: 598.98 ng/ml



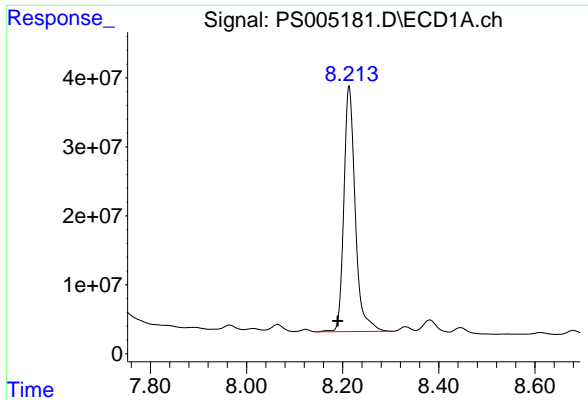
#12 2,4,5-T

R.T.: 7.681 min
Delta R.T.: 0.023 min
Response: 4612615020
Conc: 573.15 ng/ml



#12 2,4,5-T

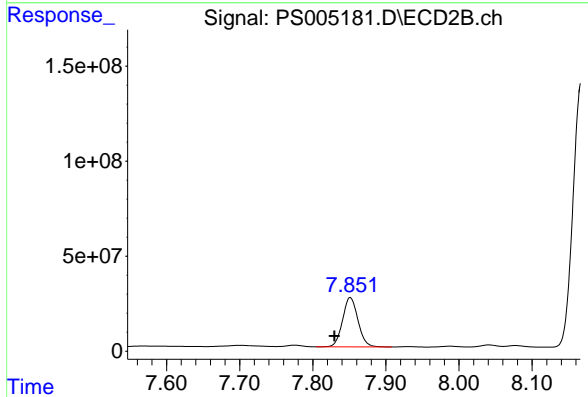
R.T.: 7.363 min
Delta R.T.: 0.022 min
Response: 2913133172
Conc: 571.11 ng/ml



#13 2,4-DB

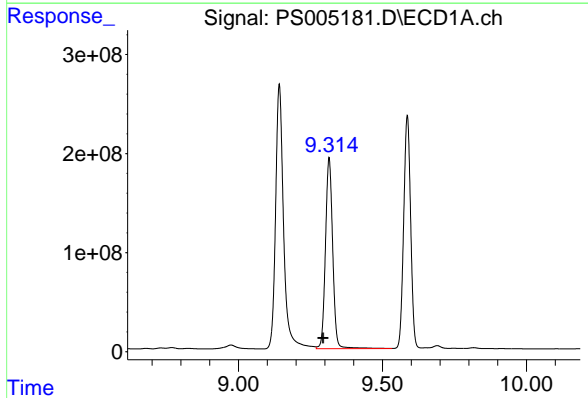
R.T.: 8.213 min
 Delta R.T.: 0.024 min
 Response: 581717034
 Conc: 500.81 ng/ml

Instrument :
 ECD_S
 ClientSampleId :



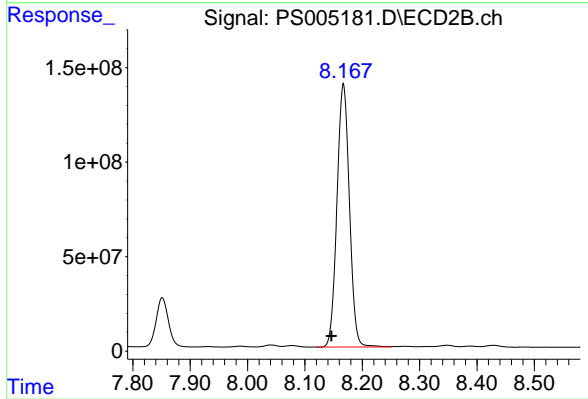
#13 2,4-DB

R.T.: 7.851 min
 Delta R.T.: 0.022 min
 Response: 380182391
 Conc: 582.34 ng/ml



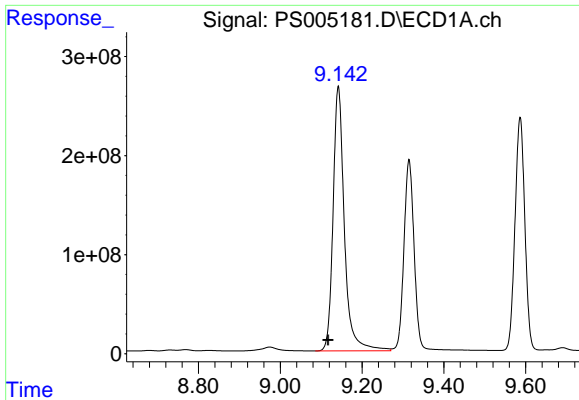
#14 DINOSEB

R.T.: 9.315 min
 Delta R.T.: 0.021 min
 Response: 3369278651
 Conc: 527.13 ng/ml



#14 DINOSEB

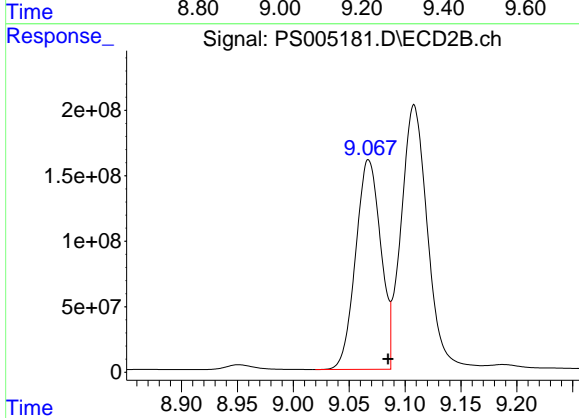
R.T.: 8.167 min
 Delta R.T.: 0.021 min
 Response: 2102135063
 Conc: 519.92 ng/ml



#15 Picloram

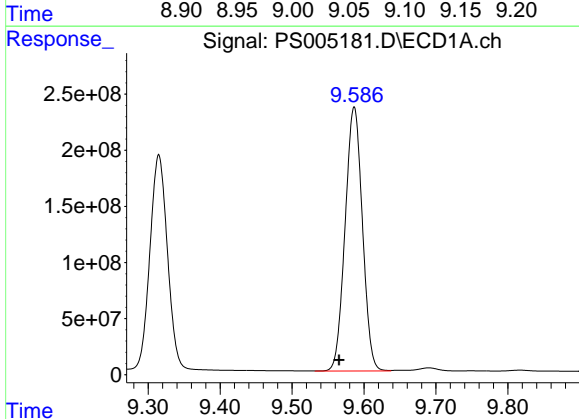
R.T.: 9.142 min
 Delta R.T.: 0.025 min
 Response: 5142166057
 Conc: 447.49 ng/ml

Instrument :
 ECD_S
 ClientSampled :



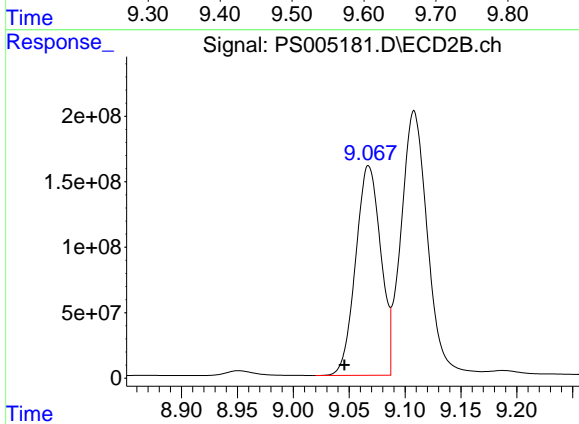
#15 Picloram

R.T.: 9.068 min
 Delta R.T.: -0.017 min
 Response: 2504415491
 Conc: 331.87 ng/ml



#16 DCPA

R.T.: 9.586 min
 Delta R.T.: 0.021 min
 Response: 3934228670
 Conc: 394.40 ng/ml



#16 DCPA

R.T.: 9.068 min
 Delta R.T.: 0.022 min
 Response: 2504415491
 Conc: 367.89 ng/ml