

Data Path : Z:\pestpcbsrv\HPCHEM1\ECD_S\Data\PS062819\
 Data File : PS005278.D
 Signal(s) : Signal #1: ECD1A.ch Signal #2: ECD2B.ch
 Acq On : 28 Jun 2019 17:06
 Operator : SM\AJ
 Sample : K3157-14
 Misc :
 ALS Vial : 8 Sample Multiplier: 1

Instrument :
 ECD_S
 ClientSampleId :
 CL-02-062619-B

Integration File signal 1: autoint1.e
 Integration File signal 2: autoint2.e
 Quant Time: Jun 28 17:58:09 2019
 Quant Method : Z:\pestpcbsrv\HPCHEM1\ECD_S\Method\PS061919.M
 Quant Title : 8080.M
 QLast Update : Thu Jun 20 11:04:04 2019
 Response via : Initial Calibration
 Integrator: ChemStation

Volume Inj. : 2 µl
 Signal #1 Phase : Rtx-CLPesticides Signal #2 Phase: Rtx-CLPesticides2
 Signal #1 Info : 30M x 0.32mm x0.5 Signal #2 Info : 30M x 0.32mm x 0.25µm

Compound	RT#1	RT#2	Resp#1	Resp#2	ng/ml	ng/ml

System Monitoring Compounds						
4) S 2,4-DCAA	5.583	5.298	627.8E6	405.9E6	427.683	404.909
Target Compounds						
2) T 3,5-DICHL...	0.000	4.559	0	12066750	N.D.	9.150
3) T 4-Nitroph...	5.374	4.963	9599864	17343960	13.254	34.588 #
5) T DICAMBA	5.774	5.404	17155782	14730978	3.007	3.935 #
6) T MCPP	5.936	0.000	12484323	0	2.852	N.D. #
7) T MCPA	5.973	5.630	20255535	39200654	3.226	9.677 #
8) T DICHLORPROP	0.000	5.986	0	21692900	N.D.	22.467
10) T Pentachlo...	0.000	6.563	0	13984550	N.D.	1.088
11) T 2,4,5-TP ...	0.000	6.951	0	158.9E6	N.D.	29.843
12) T 2,4,5-T	7.606	0.000	263.5E6	0	32.745	N.D. #

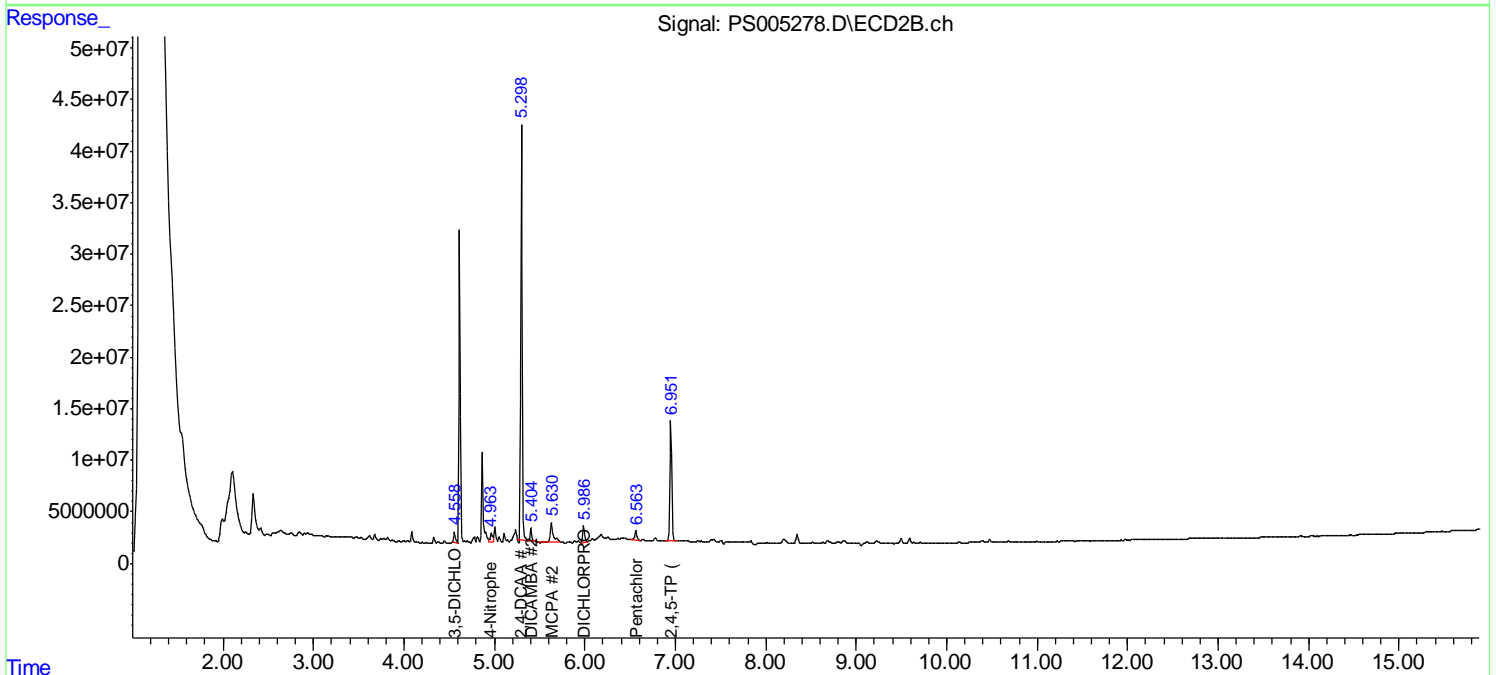
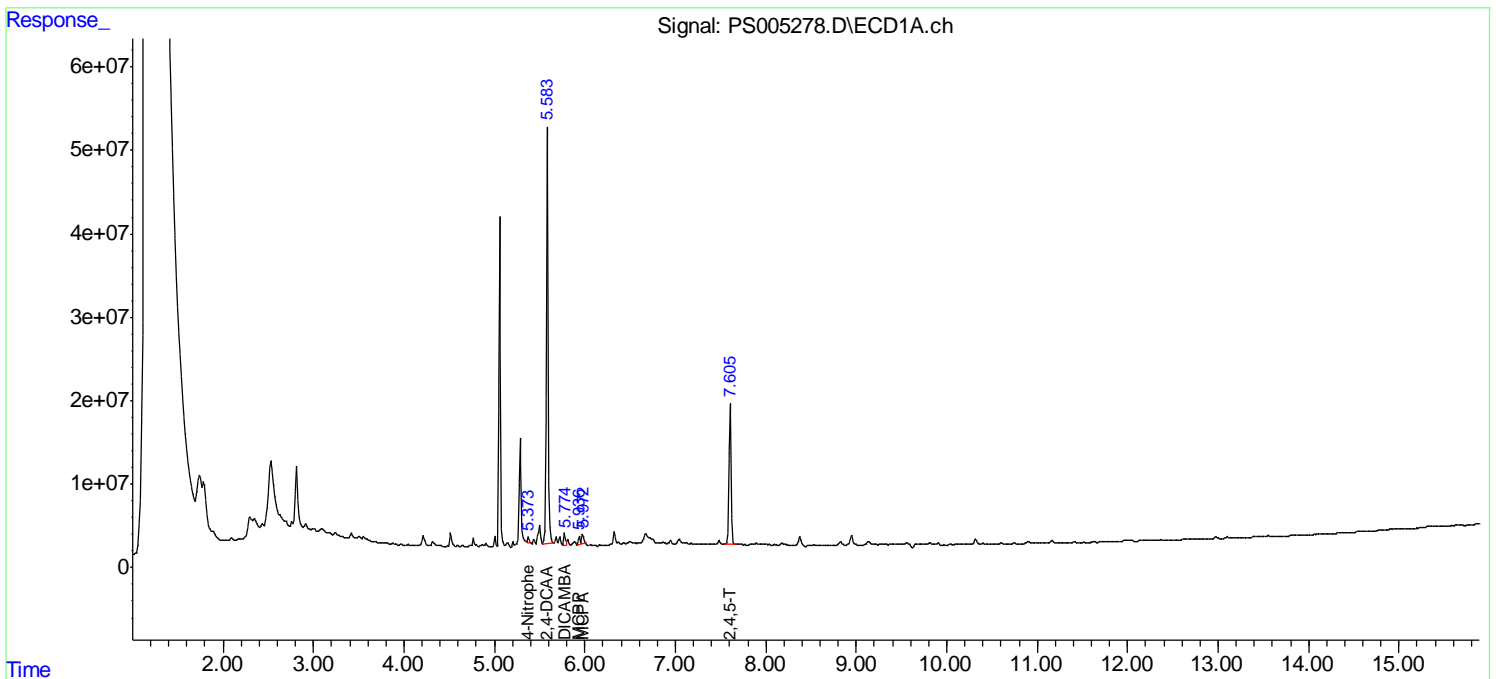
(f)=RT Delta > 1/2 Window (#)=Amounts differ by > 25% (m)=manual int.

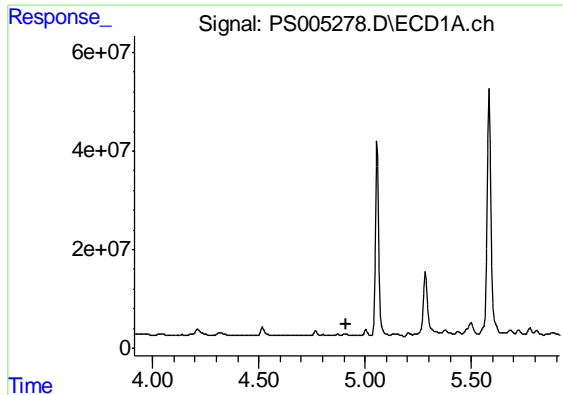
Data Path : Z:\pestpcbsrv\HPCHEM1\ECD_S\Data\PS062819\
 Data File : PS005278.D
 Signal(s) : Signal #1: ECD1A.ch Signal #2: ECD2B.ch
 Acq On : 28 Jun 2019 17:06
 Operator : SM\AJ
 Sample : K3157-14
 Misc :
 ALS Vial : 8 Sample Multiplier: 1

Instrument :
 ECD_S
 ClientSampleId :
 CL-02-062619-B

Integration File signal 1: autoint1.e
 Integration File signal 2: autoint2.e
 Quant Time: Jun 28 17:58:09 2019
 Quant Method : Z:\pestpcbsrv\HPCHEM1\ECD_S\Method\PS061919.M
 Quant Title : 8080.M
 QLast Update : Thu Jun 20 11:04:04 2019
 Response via : Initial Calibration
 Integrator: ChemStation

Volume Inj. : 2 µl
 Signal #1 Phase : Rtx-CLPesticides Signal #2 Phase: Rtx-CLPesticides2
 Signal #1 Info : 30M x 0.32mm x0.5 Signal #2 Info : 30M x 0.32mm x 0.25µm

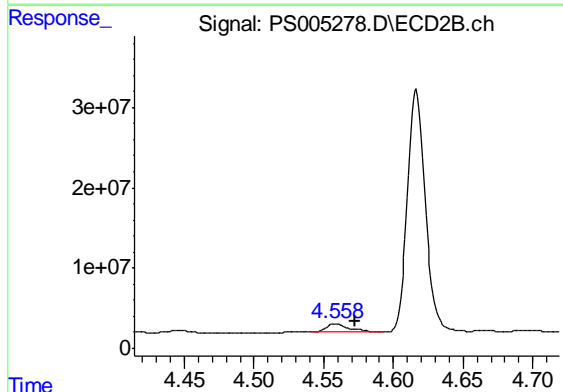




#2 3,5-DICHLOROBENZOIC ACID

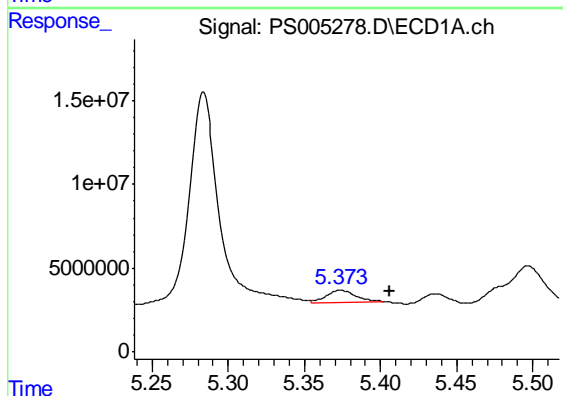
R.T.: 0.000 min
 Exp R.T. : 4.914 min
 Response: 0
 Conc: N.D.

Instrument :
 ECD_S
 ClientSampleId :
 CL-02-062619-B



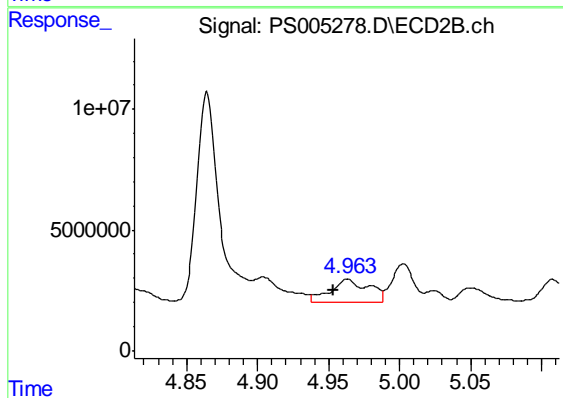
#2 3,5-DICHLOROBENZOIC ACID

R.T.: 4.559 min
 Delta R.T.: -0.014 min
 Response: 12066750
 Conc: 9.15 ng/ml



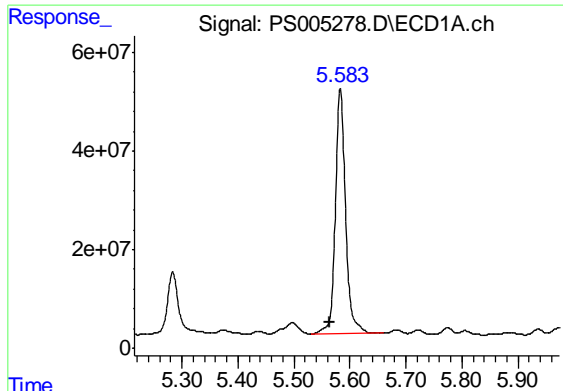
#3 4-Nitrophenol

R.T.: 5.374 min
 Delta R.T.: -0.033 min
 Response: 9599864
 Conc: 13.25 ng/ml



#3 4-Nitrophenol

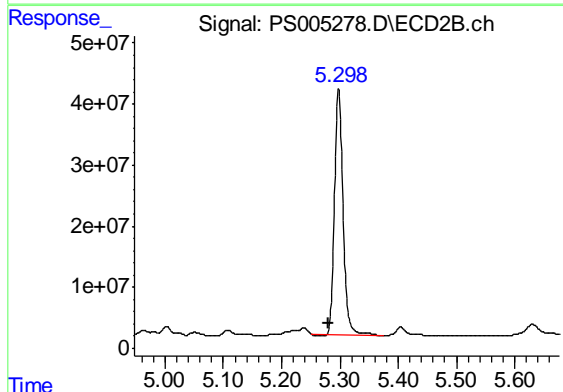
R.T.: 4.963 min
 Delta R.T.: 0.010 min
 Response: 17343960
 Conc: 34.59 ng/ml



#4 2,4-DCAA

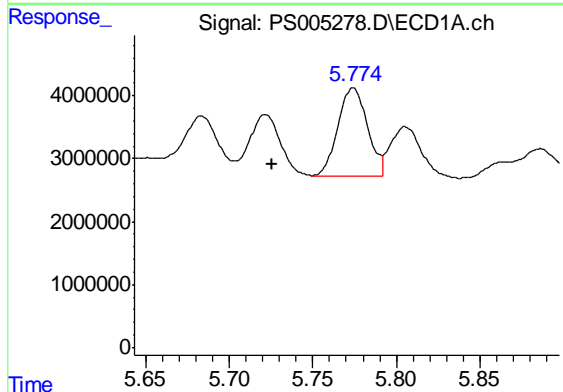
R.T.: 5.583 min
 Delta R.T.: 0.019 min
 Response: 627793312
 Conc: 427.68 ng/ml

Instrument :
 ECD_S
 ClientSampleId :
 CL-02-062619-B



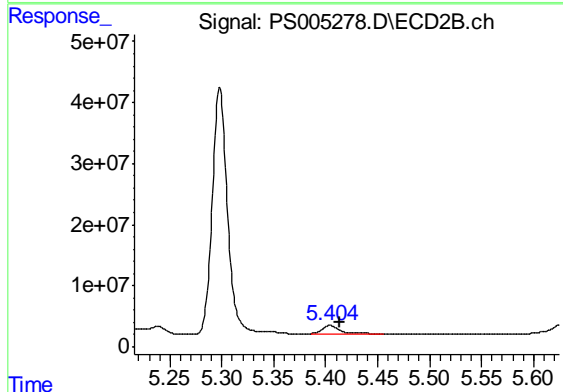
#4 2,4-DCAA

R.T.: 5.298 min
 Delta R.T.: 0.018 min
 Response: 405867571
 Conc: 404.91 ng/ml



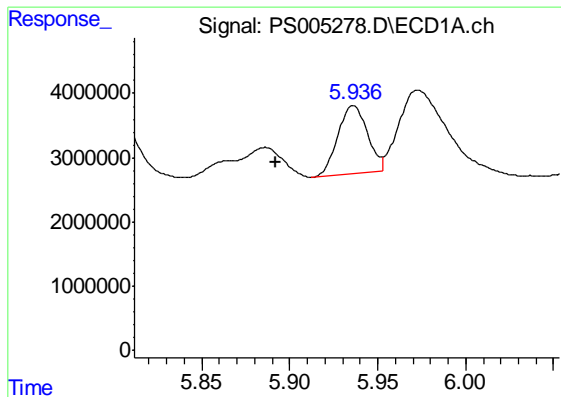
#5 DICAMBA

R.T.: 5.774 min
 Delta R.T.: 0.049 min
 Response: 17155782
 Conc: 3.01 ng/ml



#5 DICAMBA

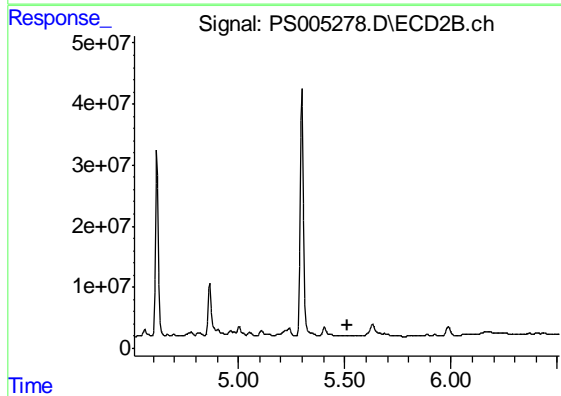
R.T.: 5.404 min
 Delta R.T.: -0.010 min
 Response: 14730978
 Conc: 3.94 ng/ml



#6 MCPP

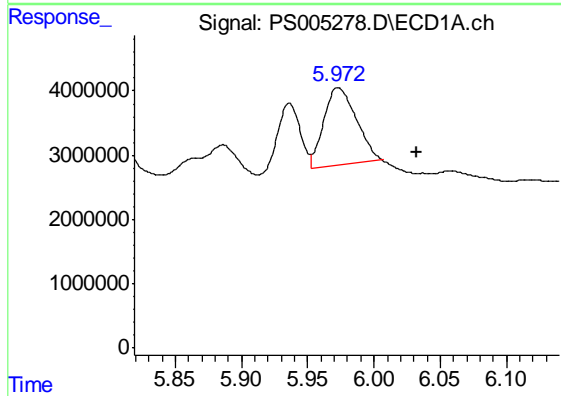
R.T.: 5.936 min
 Delta R.T.: 0.044 min
 Response: 12484323
 Conc: 2.85 ug/ml

Instrument :
 ECD_S
 ClientSampled :
 CL-02-062619-B



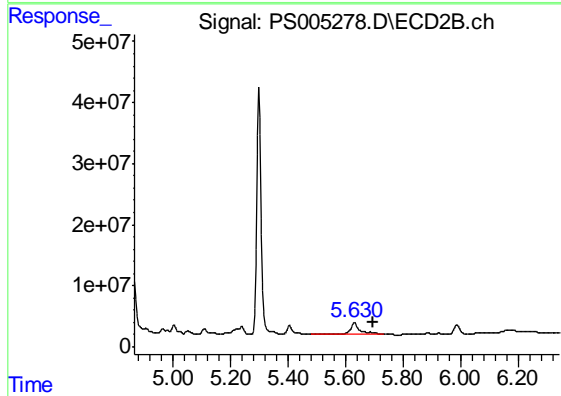
#6 MCPP

R.T.: 0.000 min
 Exp R.T. : 5.511 min
 Response: 0
 Conc: N.D.



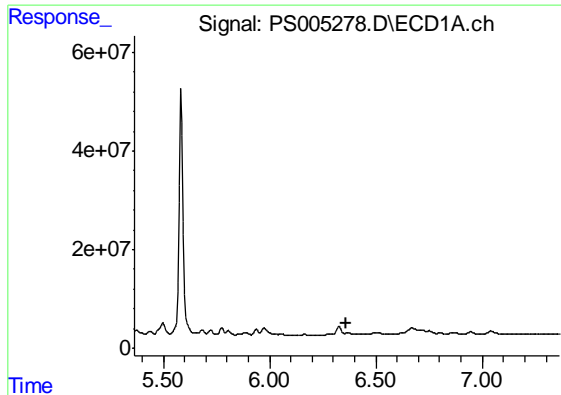
#7 MCPA

R.T.: 5.973 min
 Delta R.T.: -0.059 min
 Response: 20255535
 Conc: 3.23 ug/ml



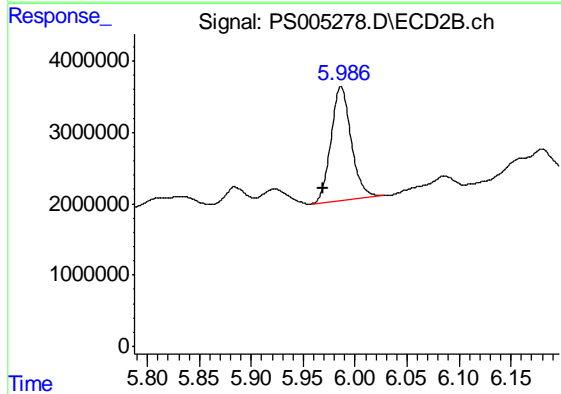
#7 MCPA

R.T.: 5.630 min
 Delta R.T.: -0.068 min
 Response: 39200654
 Conc: 9.68 ug/ml

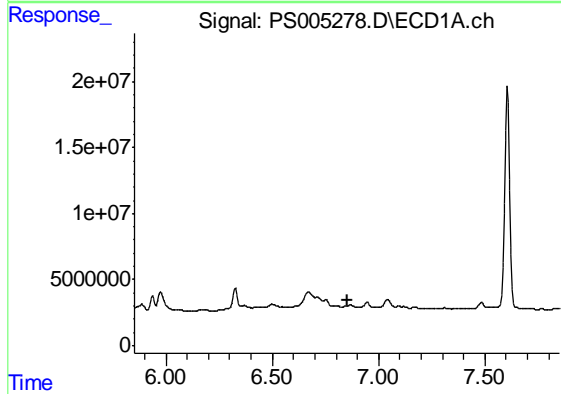


#8 DICHLORPROP
 R.T.: 0.000 min
 Exp R.T. : 6.363 min
 Response: 0
 Conc: N.D.

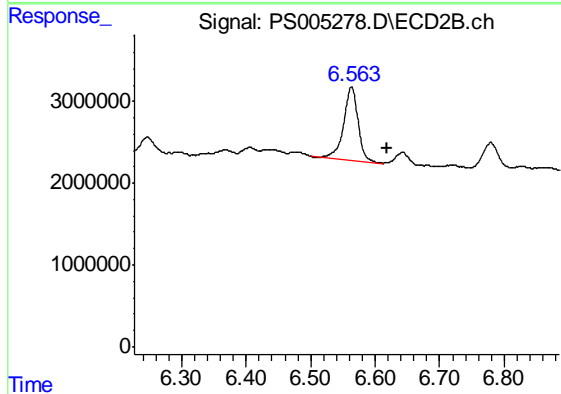
Instrument :
 ECD_S
 ClientSampleId :
 CL-02-062619-B



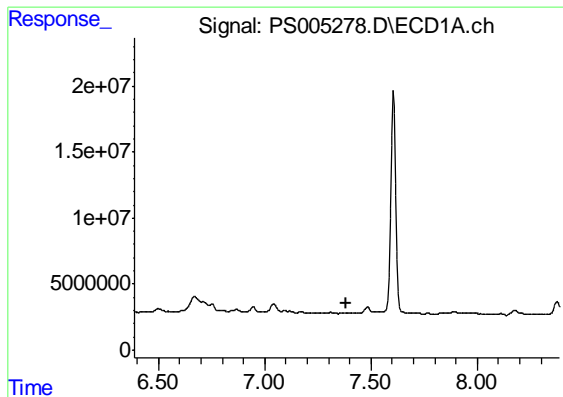
#8 DICHLORPROP
 R.T.: 5.986 min
 Delta R.T.: 0.017 min
 Response: 21692900
 Conc: 22.47 ng/ml



#10 Pentachlorophenol
 R.T.: 0.000 min
 Exp R.T. : 6.852 min
 Response: 0
 Conc: N.D.



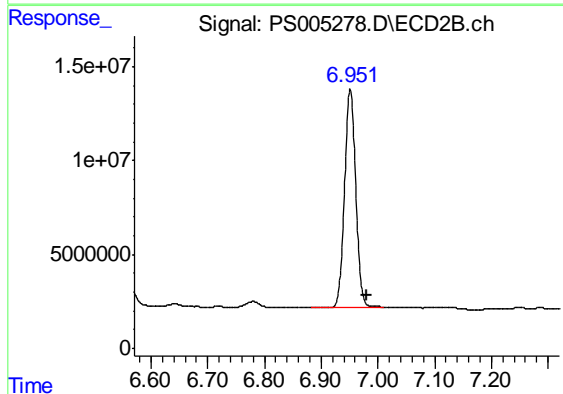
#10 Pentachlorophenol
 R.T.: 6.563 min
 Delta R.T.: -0.056 min
 Response: 13984550
 Conc: 1.09 ng/ml



#11 2,4,5-TP (SILVEX)

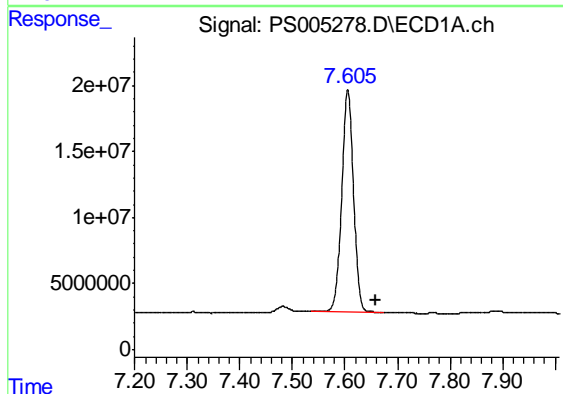
R.T.: 0.000 min
 Exp R.T. : 7.387 min
 Response: 0
 Conc: N.D.

Instrument :
 ECD_S
 ClientSampled :
 CL-02-062619-B



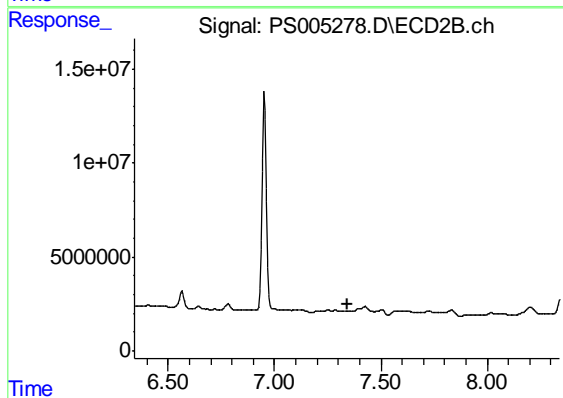
#11 2,4,5-TP (SILVEX)

R.T.: 6.951 min
 Delta R.T.: -0.029 min
 Response: 158924675
 Conc: 29.84 ng/ml



#12 2,4,5-T

R.T.: 7.606 min
 Delta R.T.: -0.053 min
 Response: 263526140
 Conc: 32.74 ng/ml



#12 2,4,5-T

R.T.: 0.000 min
 Exp R.T. : 7.341 min
 Response: 0
 Conc: N.D.