

Data Path : Z:\pestpcbsrv\HPCHEM1\ECD\_S\Data\PS070919\  
 Data File : PS005427.D  
 Signal(s) : Signal #1: ECD1A.ch Signal #2: ECD2B.ch  
 Acq On : 09 Jul 2019 12:57  
 Operator : SM\AJ  
 Sample : K3624-02  
 Misc :  
 ALS Vial : 8 Sample Multiplier: 1

Instrument :  
 ECD\_S  
 ClientSampleId :  
 PL-01-070319-A

Integration File signal 1: autoint1.e  
 Integration File signal 2: autoint2.e  
 Quant Time: Jul 09 13:23:56 2019  
 Quant Method : Z:\pestpcbsrv\HPCHEM1\ECD\_S\Method\PS061919.M  
 Quant Title : 8080.M  
 QLast Update : Thu Jun 20 11:04:04 2019  
 Response via : Initial Calibration  
 Integrator: ChemStation

Volume Inj. : 2 µl  
 Signal #1 Phase : Rtx-CLPesticides Signal #2 Phase: Rtx-CLPesticides2  
 Signal #1 Info : 30M x 0.32mm x0.5 Signal #2 Info : 30M x 0.32mm x 0.25µm

Compound	RT#1	RT#2	Resp#1	Resp#2	ng/ml	ng/ml
----------	------	------	--------	--------	-------	-------

-----  
 System Monitoring Compounds

4) S	2,4-DCAA	5.575	5.290	681.9E6	453.4E6	464.544	452.324
------	----------	-------	-------	---------	---------	---------	---------

Target Compounds  
 -----

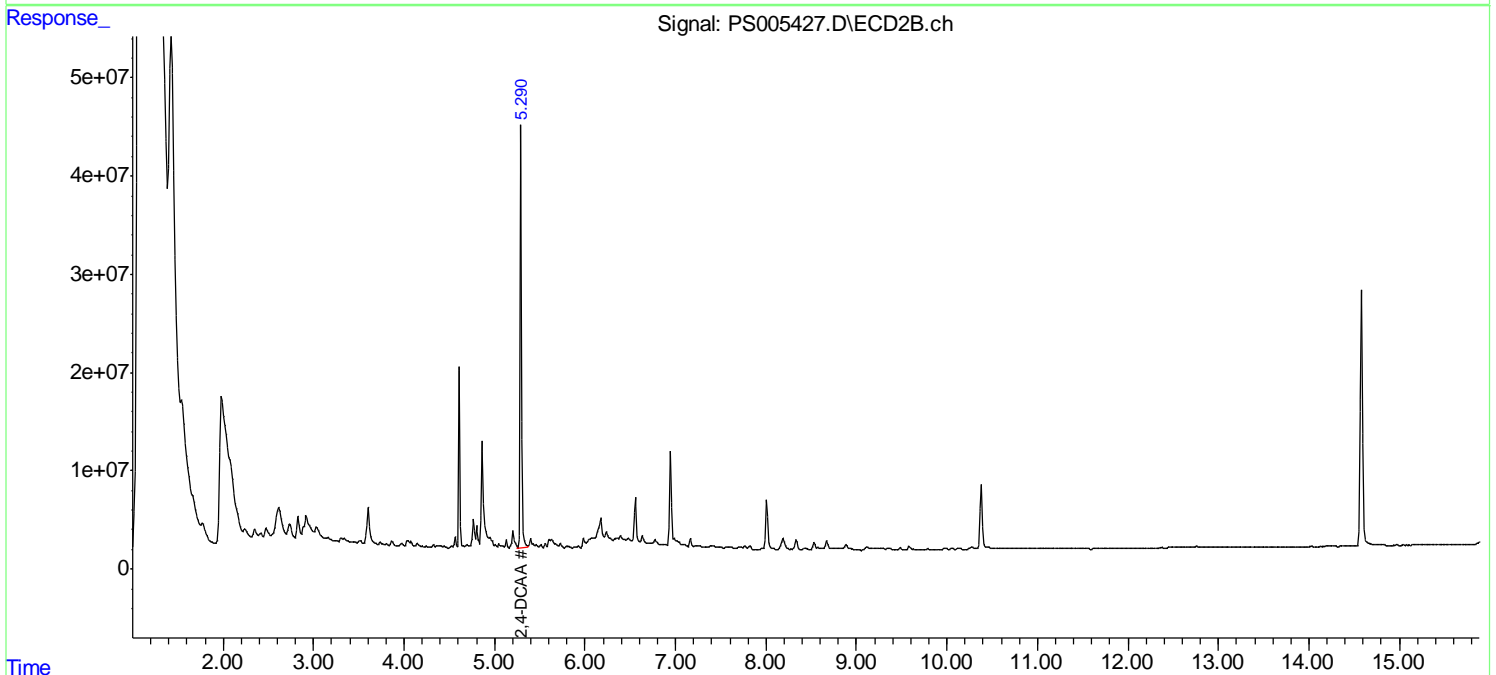
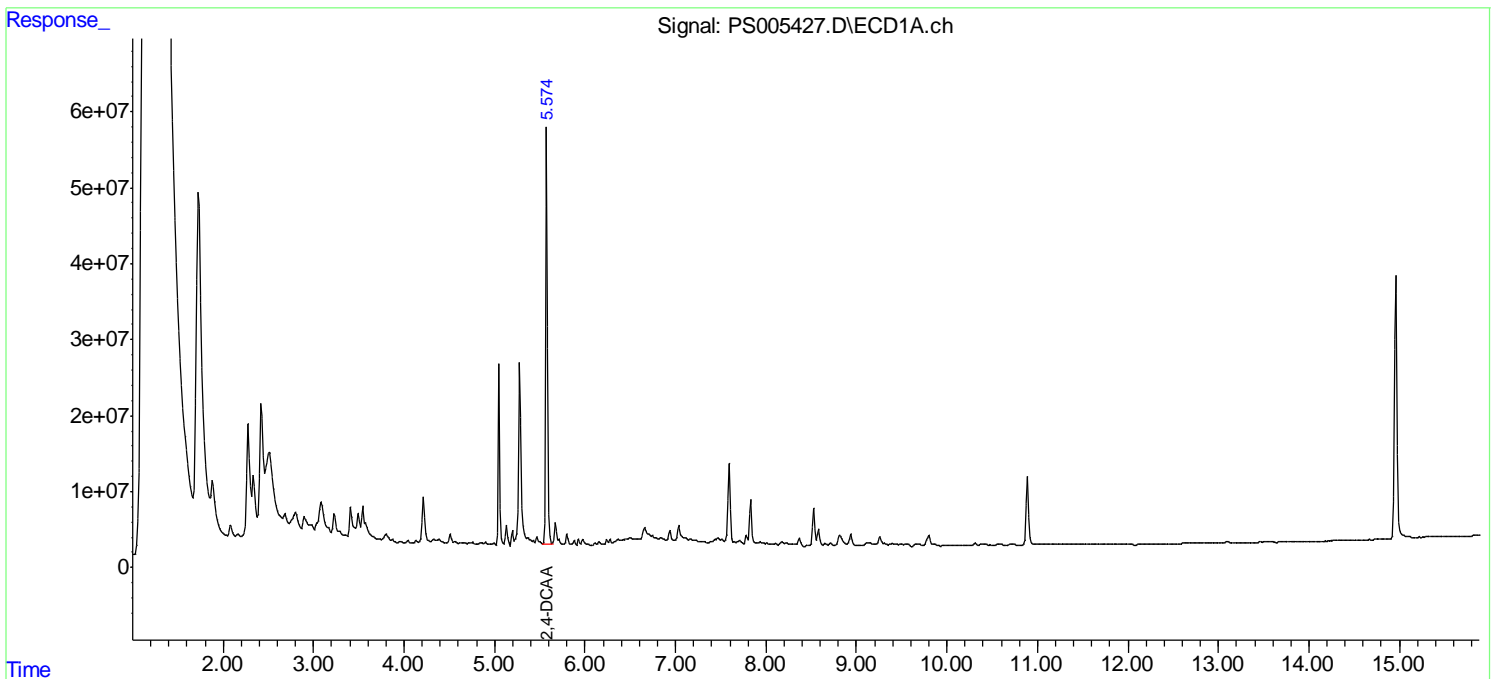
(f)=RT Delta > 1/2 Window (#)=Amounts differ by > 25% (m)=manual int.

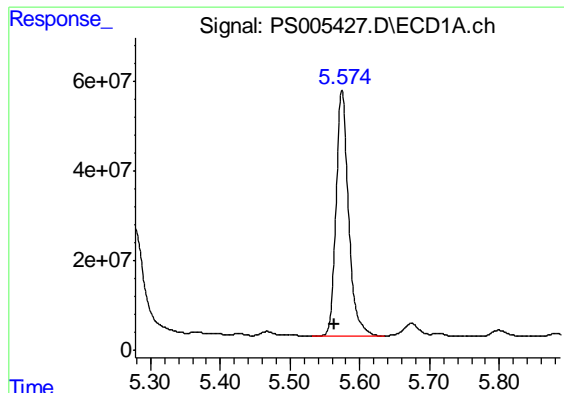
Data Path : Z:\pestpcbsrv\HPCHEM1\ECD\_S\Data\PS070919\  
 Data File : PS005427.D  
 Signal(s) : Signal #1: ECD1A.ch Signal #2: ECD2B.ch  
 Acq On : 09 Jul 2019 12:57  
 Operator : SM\AJ  
 Sample : K3624-02  
 Misc :  
 ALS Vial : 8 Sample Multiplier: 1

Instrument :  
 ECD\_S  
 ClientSampleId :  
 PL-01-070319-A

Integration File signal 1: autoint1.e  
 Integration File signal 2: autoint2.e  
 Quant Time: Jul 09 13:23:56 2019  
 Quant Method : Z:\pestpcbsrv\HPCHEM1\ECD\_S\Method\PS061919.M  
 Quant Title : 8080.M  
 QLast Update : Thu Jun 20 11:04:04 2019  
 Response via : Initial Calibration  
 Integrator: ChemStation

Volume Inj. : 2 µl  
 Signal #1 Phase : Rtx-CLPesticides Signal #2 Phase: Rtx-CLPesticides2  
 Signal #1 Info : 30M x 0.32mm x0.5 Signal #2 Info : 30M x 0.32mm x 0.25µm

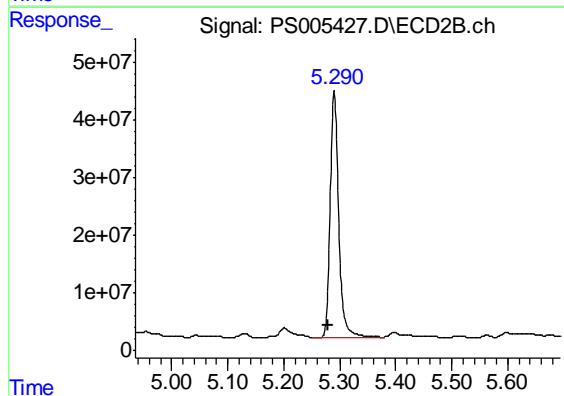




#4 2,4-DCAA

R.T.: 5.575 min  
Delta R.T.: 0.011 min  
Response: 681901122  
Conc: 464.54 ng/ml

Instrument :  
ECD\_S  
ClientSampleId :  
PL-01-070319-A



#4 2,4-DCAA

R.T.: 5.290 min  
Delta R.T.: 0.011 min  
Response: 453395616  
Conc: 452.32 ng/ml