

Data Path : Z:\pestpcbsrv\HPCHEM1\ECD_S\Data\PS072319\
 Data File : PS005658.D
 Signal(s) : Signal #1: ECD1A.ch Signal #2: ECD2B.ch
 Acq On : 23 Jul 2019 18:52
 Operator : SM\AJ
 Sample : PB121662BL
 Misc :
 ALS Vial : 8 Sample Multiplier: 1

Instrument :
 ECD_S
 ClientSampleId :
 PB121662BL

Integration File signal 1: autoint1.e
 Integration File signal 2: autoint2.e
 Quant Time: Jul 24 00:51:20 2019
 Quant Method : Z:\pestpcbsrv\HPCHEM1\ECD_S\Method\PS071819.M
 Quant Title : 8080.M
 QLast Update : Fri Jul 19 08:54:13 2019
 Response via : Initial Calibration
 Integrator: ChemStation

Volume Inj. : 2 µl
 Signal #1 Phase : Rtx-CLPesticides Signal #2 Phase: Rtx-CLPesticides2
 Signal #1 Info : 30M x 0.32mm x0.5 Signal #2 Info : 30M x 0.32mm x 0.25µm

	Compound	RT#1	RT#2	Resp#1	Resp#2	ng/ml	ng/ml

System Monitoring Compounds							
4) S	2,4-DCAA	5.560	5.277	537.9E6	341.6E6	341.363	330.682
Target Compounds							
2) T	3,5-DICHL...	4.982	4.596	5933607	66058826	2.789	48.735 #
3) T	4-Nitroph...	5.413	0.000	2815566	0	3.939	N.D. #
5) T	DICAMBA	5.747	0.000	1481601	0	<MDL	N.D. #
6) T	MCPPP	5.869	0.000	11892714	0	2.449	N.D. #
7) T	MCPA	6.051	5.666	16440658	31090521	2.432	7.056 #
9) T	2,4-D	6.643	6.222	158.0E6	15052603	90.083	12.891 #
10) T	Pentachlo...	6.847	0.000	3206300	0	<MDL	N.D. #
11) T	2,4,5-TP ...	7.447	0.000	4832045	0	<MDL	N.D. #
12) T	2,4,5-T	7.637	0.000	2496866	0	<MDL	N.D. #
13) T	2,4-DB	8.220	0.000	54775621	0	43.726	N.D. #
14) T	DINOSEB	9.235	0.000	19653757	0	2.818	N.D. #
15) T	Picloram	9.153	0.000	26587490	0	2.134	N.D. #
16) T	DCPA	9.535	0.000	29125227	0	2.675	N.D. #

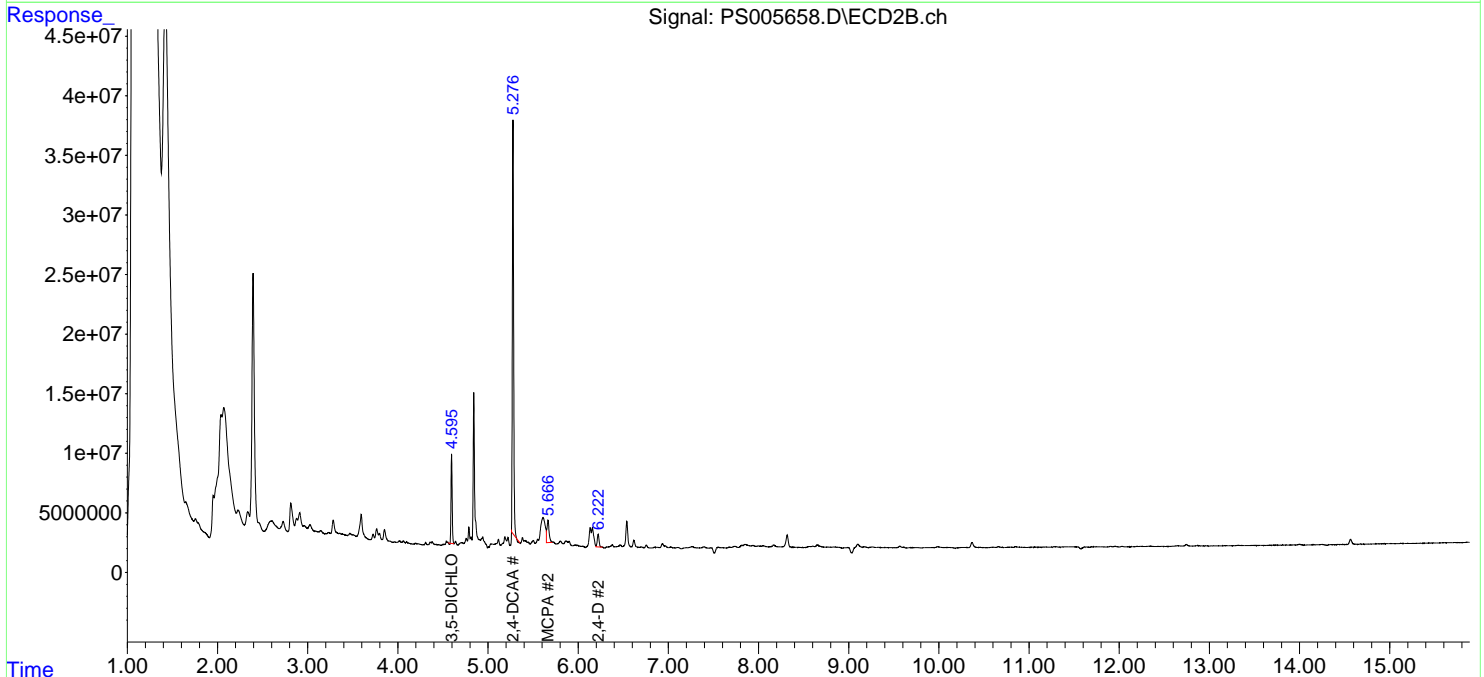
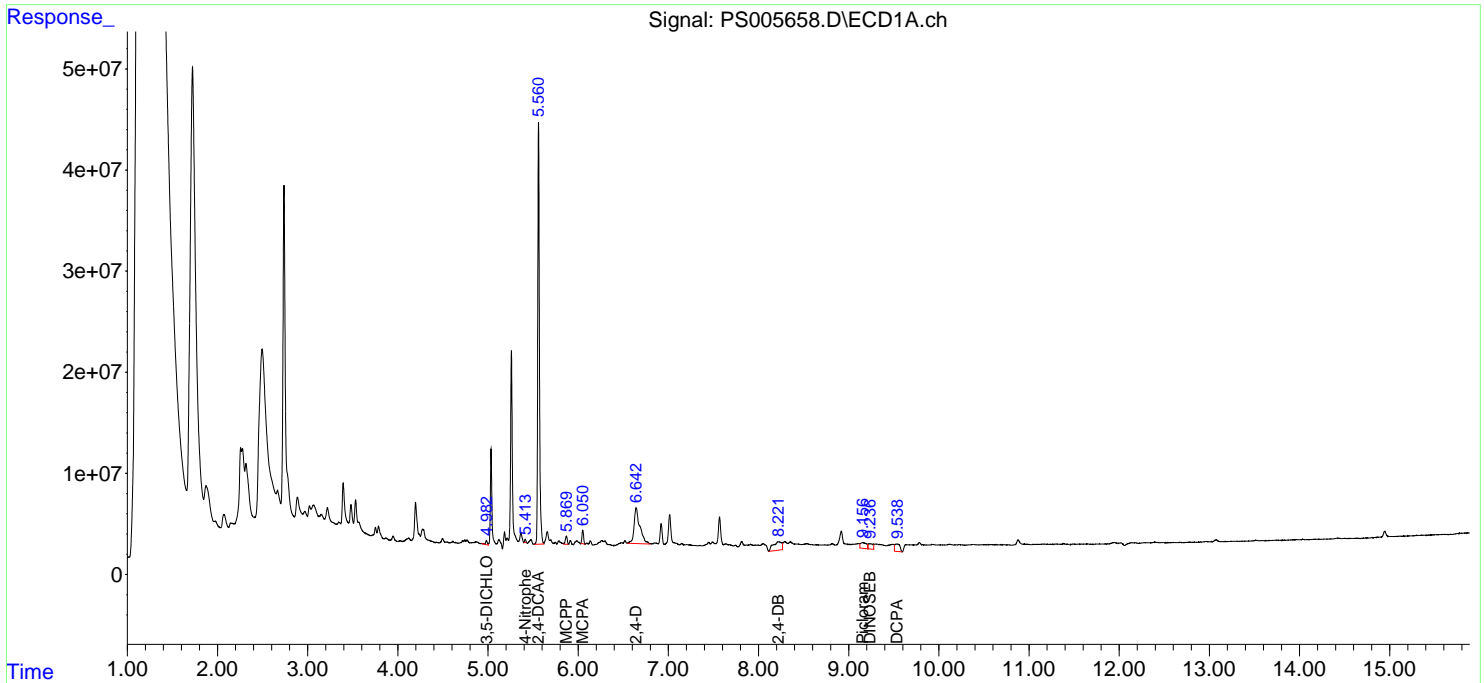
(f)=RT Delta > 1/2 Window (#)=Amounts differ by > 25% (m)=manual int.

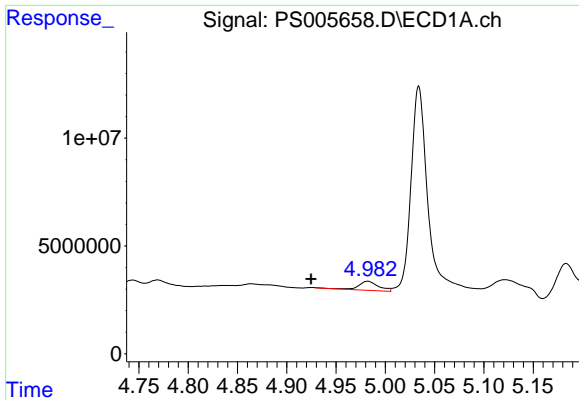
Data Path : Z:\pestpcbsrv\HPCHEM1\ECD_S\Data\PS072319\
 Data File : PS005658.D
 Signal(s) : Signal #1: ECD1A.ch Signal #2: ECD2B.ch
 Acq On : 23 Jul 2019 18:52
 Operator : SM\AJ
 Sample : PB121662BL
 Misc :
 ALS Vial : 8 Sample Multiplier: 1

Instrument :
 ECD_S
 ClientSampled :
 PB121662BL

Integration File signal 1: autoint1.e
 Integration File signal 2: autoint2.e
 Quant Time: Jul 24 00:51:20 2019
 Quant Method : Z:\pestpcbsrv\HPCHEM1\ECD_S\Method\PS071819.M
 Quant Title : 8080.M
 QLast Update : Fri Jul 19 08:54:13 2019
 Response via : Initial Calibration
 Integrator: ChemStation

Volume Inj. : 2 µl
 Signal #1 Phase : Rtx-CLPesticides Signal #2 Phase: Rtx-CLPesticides2
 Signal #1 Info : 30M x 0.32mm x 0.5 Signal #2 Info : 30M x 0.32mm x 0.25µm

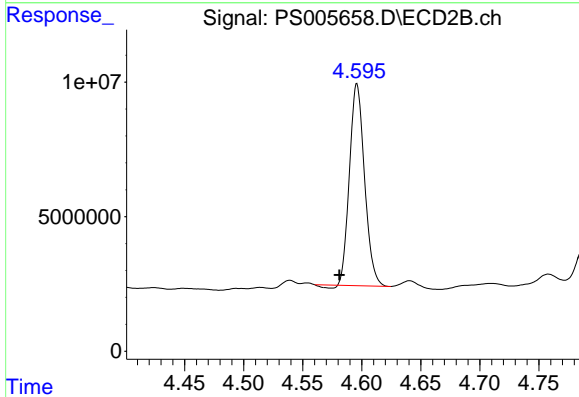




#2 3,5-DICHLOROBENZOIC ACID

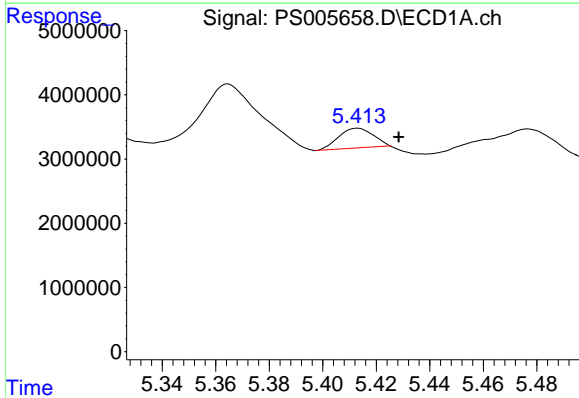
R.T.: 4.982 min
 Delta R.T.: 0.057 min
 Response: 5933607
 Conc: 2.79 ng/ml

Instrument :
 ECD_S
 ClientSampleId :
 PB121662BL



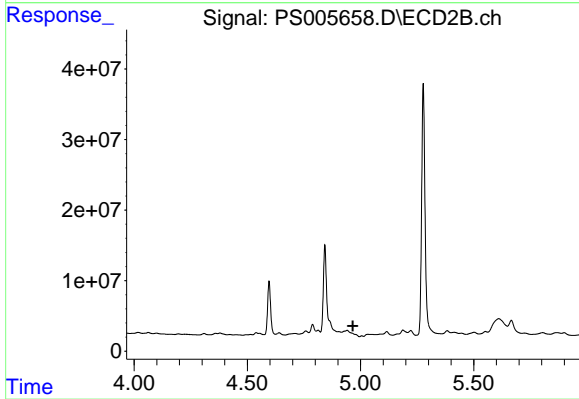
#2 3,5-DICHLOROBENZOIC ACID

R.T.: 4.596 min
 Delta R.T.: 0.015 min
 Response: 66058826
 Conc: 48.74 ng/ml



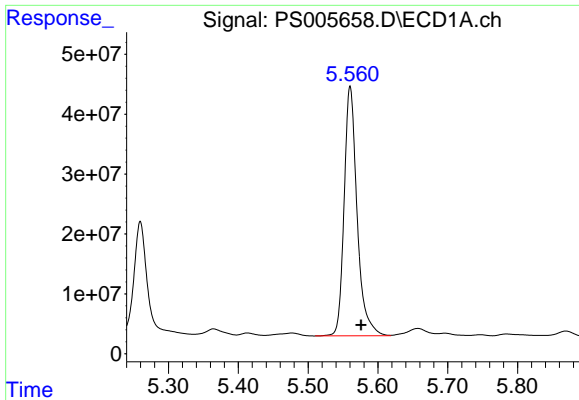
#3 4-Nitrophenol

R.T.: 5.413 min
 Delta R.T.: -0.015 min
 Response: 2815566
 Conc: 3.94 ng/ml



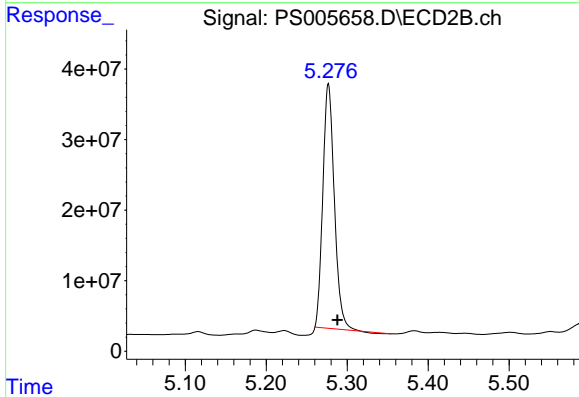
#3 4-Nitrophenol

R.T.: 0.000 min
 Exp R.T. : 4.966 min
 Response: 0
 Conc: N.D.

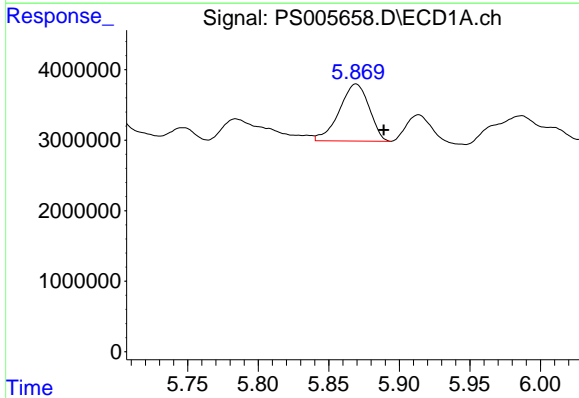


#4 2,4-DCAA
 R.T.: 5.560 min
 Delta R.T.: -0.016 min
 Response: 537903694
 Conc: 341.36 ng/ml

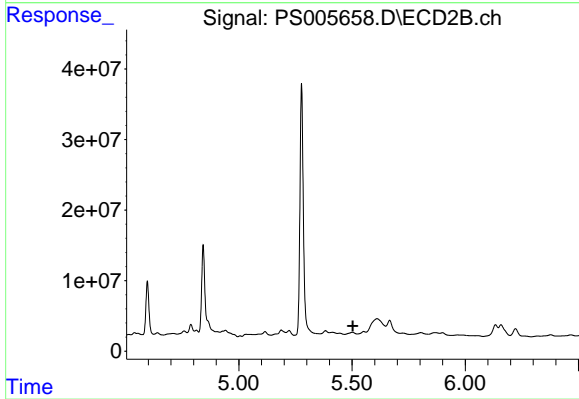
Instrument :
 ECD_S
 ClientSampleId :
 PB121662BL



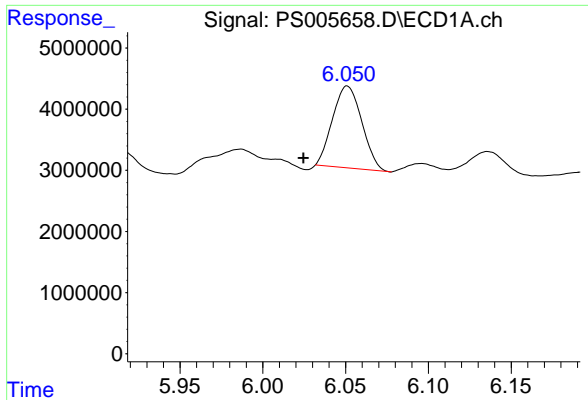
#4 2,4-DCAA
 R.T.: 5.277 min
 Delta R.T.: -0.011 min
 Response: 341561362
 Conc: 330.68 ng/ml



#6 MCP
 R.T.: 5.869 min
 Delta R.T.: -0.020 min
 Response: 11892714
 Conc: 2.45 ug/ml

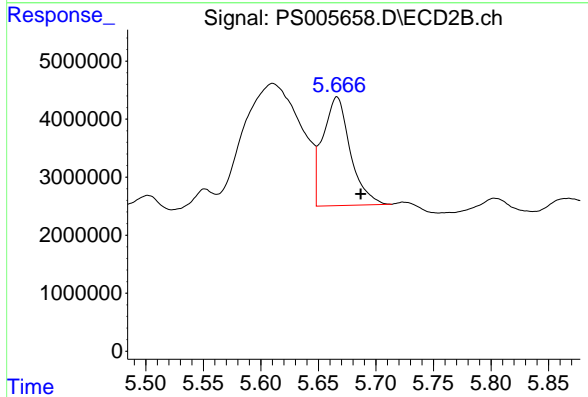


#6 MCP
 R.T.: 0.000 min
 Exp R.T. : 5.504 min
 Response: 0
 Conc: N.D.

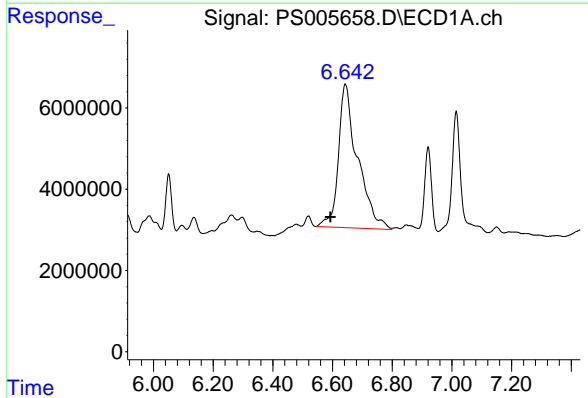


#7 MCPA
 R.T.: 6.051 min
 Delta R.T.: 0.027 min
 Response: 16440658
 Conc: 2.43 ug/ml

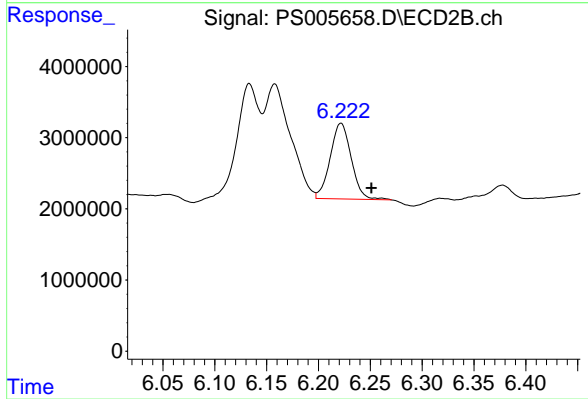
Instrument :
 ECD_S
 ClientSampled :
 PB121662BL



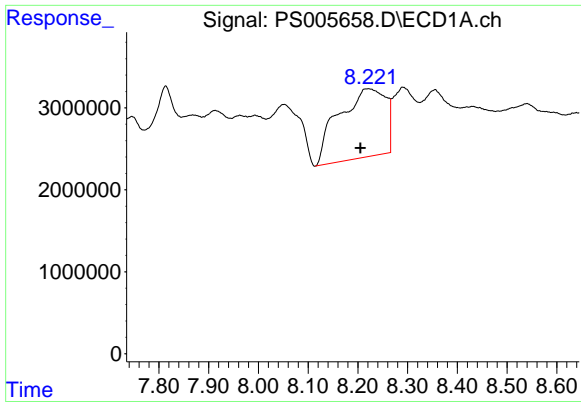
#7 MCPA
 R.T.: 5.666 min
 Delta R.T.: -0.021 min
 Response: 31090521
 Conc: 7.06 ug/ml



#9 2,4-D
 R.T.: 6.643 min
 Delta R.T.: 0.050 min
 Response: 157976961
 Conc: 90.08 ng/ml



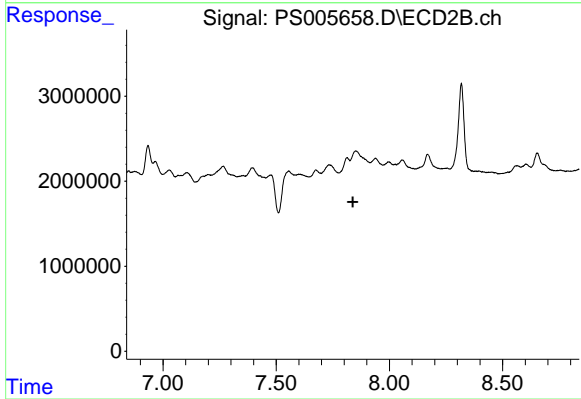
#9 2,4-D
 R.T.: 6.222 min
 Delta R.T.: -0.029 min
 Response: 15052603
 Conc: 12.89 ng/ml



#13 2,4-DB

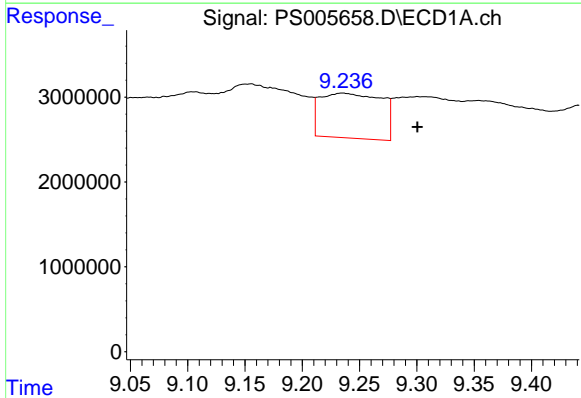
R.T.: 8.220 min
 Delta R.T.: 0.015 min
 Response: 54775621
 Conc: 43.73 ng/ml

Instrument :
 ECD_S
 ClientSampleId :
 PB121662BL



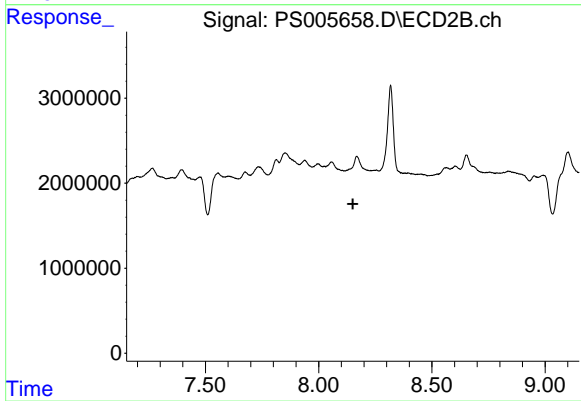
#13 2,4-DB

R.T.: 0.000 min
 Exp R.T. : 7.838 min
 Response: 0
 Conc: N.D.



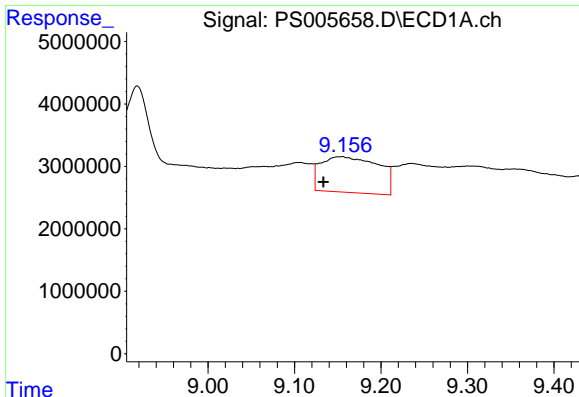
#14 DINOSEB

R.T.: 9.235 min
 Delta R.T.: -0.065 min
 Response: 19653757
 Conc: 2.82 ng/ml



#14 DINOSEB

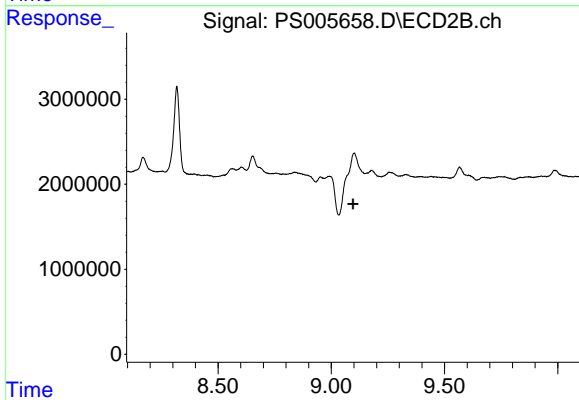
R.T.: 0.000 min
 Exp R.T. : 8.151 min
 Response: 0
 Conc: N.D.



#15 Picloram

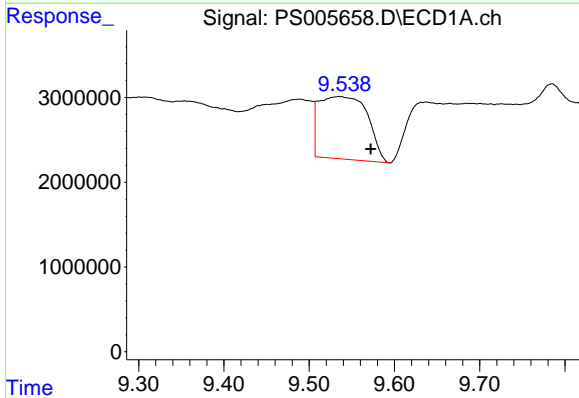
R.T.: 9.153 min
 Delta R.T.: 0.020 min
 Response: 26587490
 Conc: 2.13 ng/ml

Instrument :
 ECD_S
 ClientSampleId :
 PB121662BL



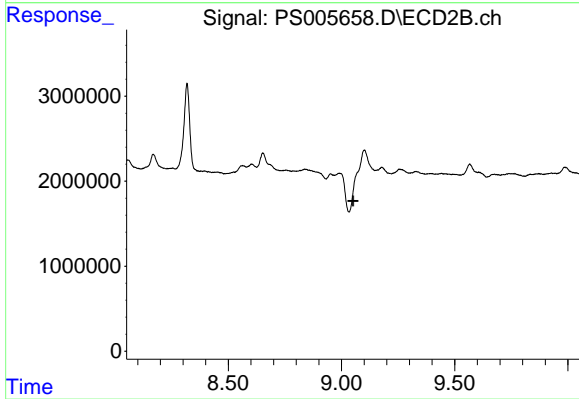
#15 Picloram

R.T.: 0.000 min
 Exp R.T. : 9.096 min
 Response: 0
 Conc: N.D.



#16 DCPA

R.T.: 9.535 min
 Delta R.T.: -0.037 min
 Response: 29125227
 Conc: 2.67 ng/ml



#16 DCPA

R.T.: 0.000 min
 Exp R.T. : 9.051 min
 Response: 0
 Conc: N.D.