

Data Path : Z:\pestpcbsrv\HPCHEM1\ECD_S\Data\PS072319\
 Data File : PS005678.D
 Signal(s) : Signal #1: ECD1A.ch Signal #2: ECD2B.ch
 Acq On : 24 Jul 2019 02:14
 Operator : SM\AJ
 Sample : K3916-02
 Misc :
 ALS Vial : 24 Sample Multiplier: 1

Instrument :
 ECD_S
 ClientSampleId :
 GIS-BUILDING-2

Integration File signal 1: autoint1.e
 Integration File signal 2: autoint2.e
 Quant Time: Jul 24 06:37:47 2019
 Quant Method : Z:\pestpcbsrv\HPCHEM1\ECD_S\Method\PS071819.M
 Quant Title : 8080.M
 QLast Update : Fri Jul 19 08:54:13 2019
 Response via : Initial Calibration
 Integrator: ChemStation

Volume Inj. : 2 µl
 Signal #1 Phase : Rtx-CLPesticides Signal #2 Phase: Rtx-CLPesticides2
 Signal #1 Info : 30M x 0.32mm x0.5 Signal #2 Info : 30M x 0.32mm x 0.25µm

	Compound	RT#1	RT#2	Resp#1	Resp#2	ng/ml	ng/ml

System Monitoring Compounds							
4) S	2,4-DCAA	5.567	5.284	338.5E6	215.5E6	214.821	208.682
Target Compounds							
2) T	3,5-DICHL...	4.895	4.604	6535153	84374178	3.072	62.247 #
3) T	4-Nitroph...	5.371	0.000	35873226	0	50.182	N.D. #
5) T	DICAMBA	5.701	5.415	832097	20912047	<MDL	5.285 #
6) T	MCPD	5.876	0.000	11349777	0	2.337	N.D. #
7) T	MCPA	6.058	5.674	15742500	44952291	2.329	10.202 #
8) T	DICHLORPROP	6.364	5.907	2899737	14703219	1.908	14.414 #
9) T	2,4-D	6.562	6.230	3314153	31096950	1.890	26.631 #
10) T	Pentachlo...	6.847	6.621	44917799	40515304	2.075	3.012 #
11) T	2,4,5-TP ...	7.389	6.939	9096377	11465931	1.028	2.057 #
12) T	2,4,5-T	7.665	7.389	26520918	59012591	3.133	11.500 #
13) T	2,4-DB	8.214	0.000	77417364	0	61.801	N.D. #
14) T	DINOSEB	9.290	0.000	70389591	0	10.091	N.D. #
15) T	Picloram	9.135	9.094	427.2E6	232.8E6	34.292	29.721
16) T	DCPA	9.561	9.094	41183876	232.8E6	3.782	32.935 #

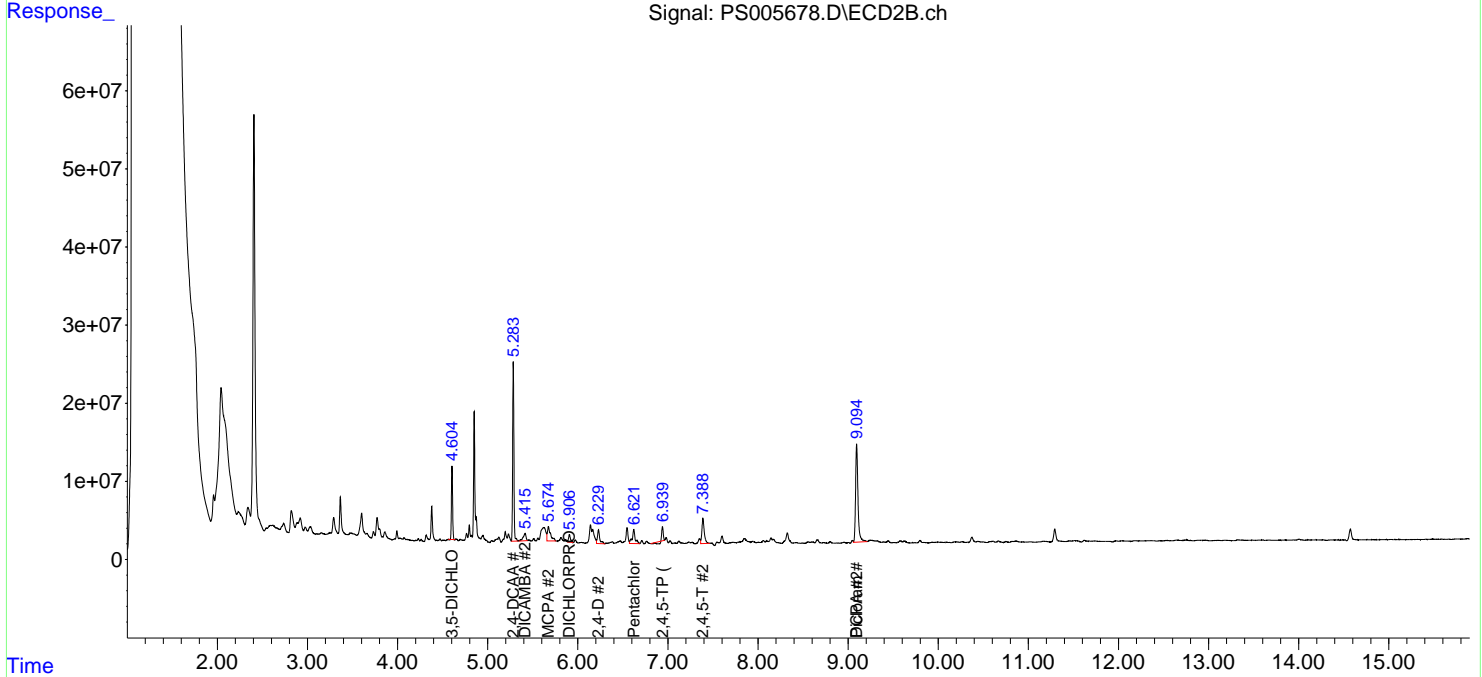
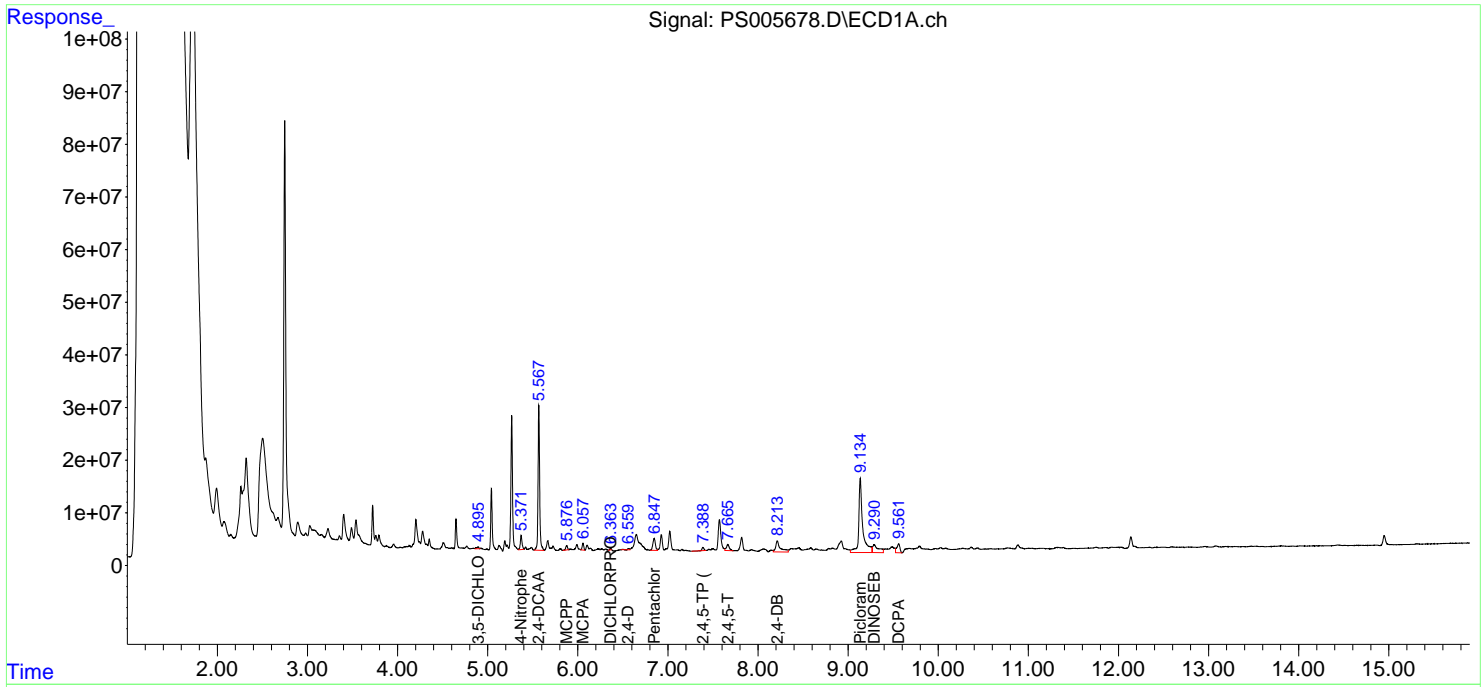
(f)=RT Delta > 1/2 Window (#)=Amounts differ by > 25% (m)=manual int.

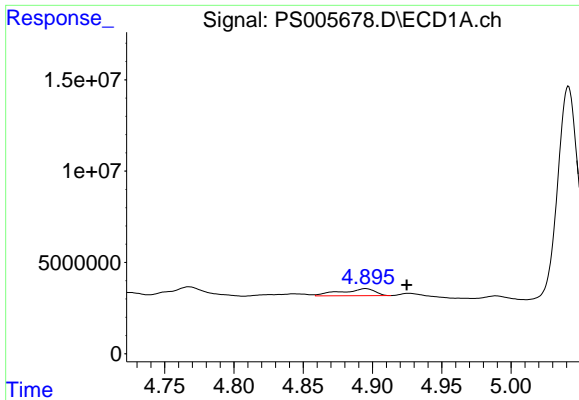
Data Path : Z:\pestpcbsrv\HPCHEM1\ECD_S\Data\PS072319\
 Data File : PS005678.D
 Signal(s) : Signal #1: ECD1A.ch Signal #2: ECD2B.ch
 Acq On : 24 Jul 2019 02:14
 Operator : SM\AJ
 Sample : K3916-02
 Misc :
 ALS Vial : 24 Sample Multiplier: 1

Instrument :
 ECD_S
 ClientSampleID :
 GIS-BUILDING-2

Integration File signal 1: autoint1.e
 Integration File signal 2: autoint2.e
 Quant Time: Jul 24 06:37:47 2019
 Quant Method : Z:\pestpcbsrv\HPCHEM1\ECD_S\Method\PS071819.M
 Quant Title : 8080.M
 QLast Update : Fri Jul 19 08:54:13 2019
 Response via : Initial Calibration
 Integrator: ChemStation

Volume Inj. : 2 µl
 Signal #1 Phase : Rtx-CLPesticides Signal #2 Phase: Rtx-CLPesticides2
 Signal #1 Info : 30M x 0.32mm x0.5 Signal #2 Info : 30M x 0.32mm x 0.25µm

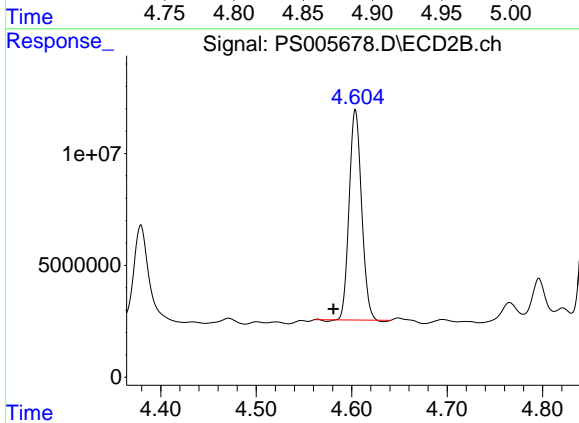




#2 3,5-DICHLOROBENZOIC ACID

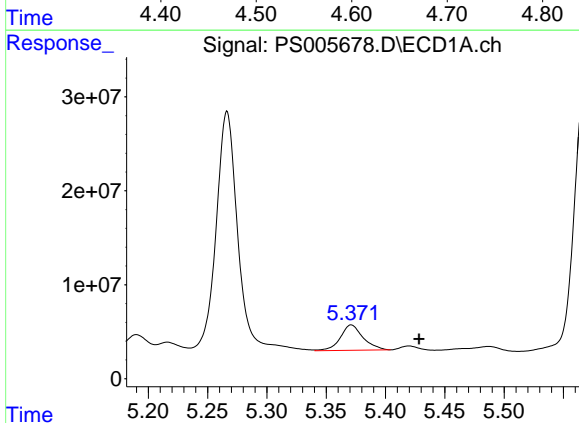
R.T.: 4.895 min
 Delta R.T.: -0.030 min
 Response: 6535153
 Conc: 3.07 ng/ml

Instrument :
 ECD_S
 ClientSampled :
 GIS-BUILDING-2



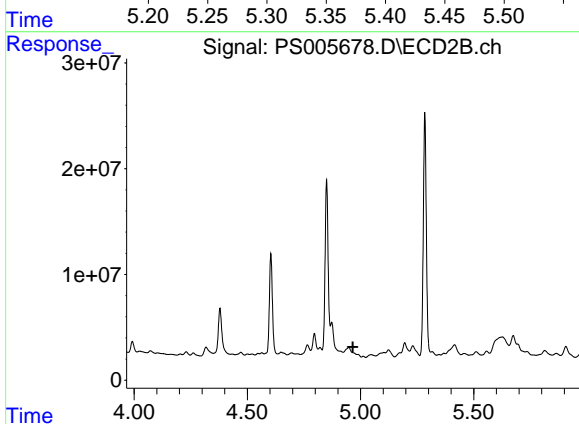
#2 3,5-DICHLOROBENZOIC ACID

R.T.: 4.604 min
 Delta R.T.: 0.023 min
 Response: 84374178
 Conc: 62.25 ng/ml



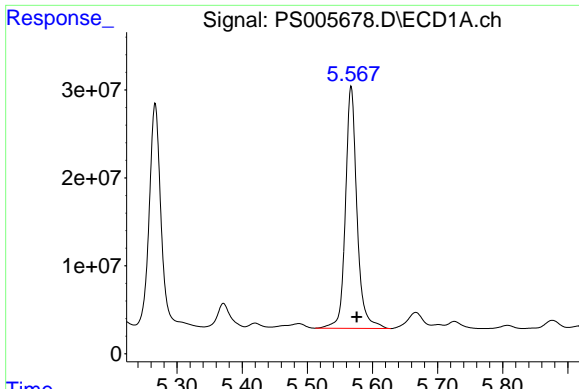
#3 4-Nitrophenol

R.T.: 5.371 min
 Delta R.T.: -0.057 min
 Response: 35873226
 Conc: 50.18 ng/ml



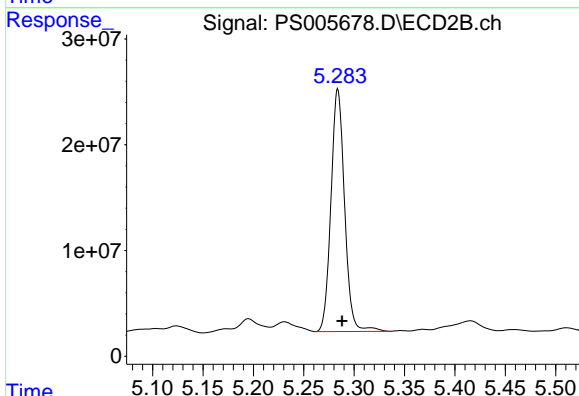
#3 4-Nitrophenol

R.T.: 0.000 min
 Exp R.T. : 4.966 min
 Response: 0
 Conc: N.D.

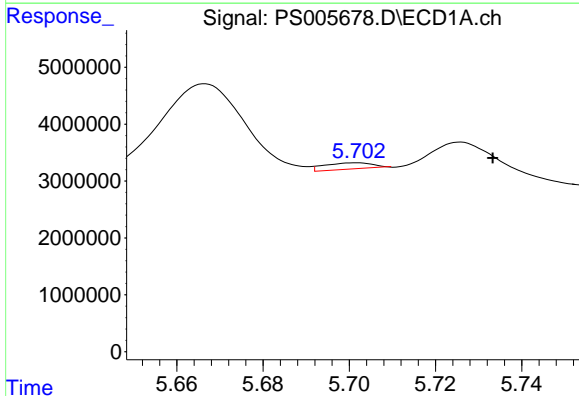


#4 2,4-DCAA
 R.T.: 5.567 min
 Delta R.T.: -0.009 min
 Response: 338504418
 Conc: 214.82 ng/ml

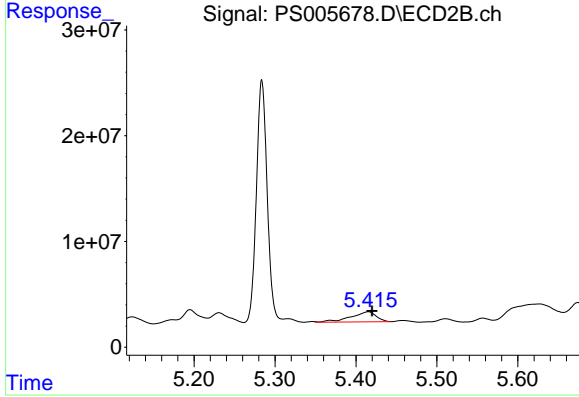
Instrument :
 ECD_S
 ClientSampled :
 GIS-BUILDING-2



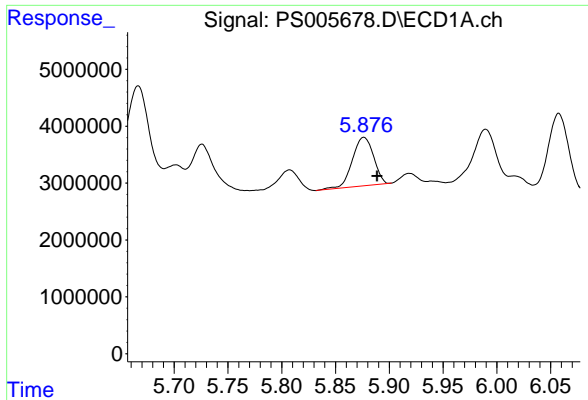
#4 2,4-DCAA
 R.T.: 5.284 min
 Delta R.T.: -0.004 min
 Response: 21547758
 Conc: 208.68 ng/ml



#5 DICAMBA
 R.T.: 5.701 min
 Delta R.T.: -0.032 min
 Response: 832097
 Conc: N.D.

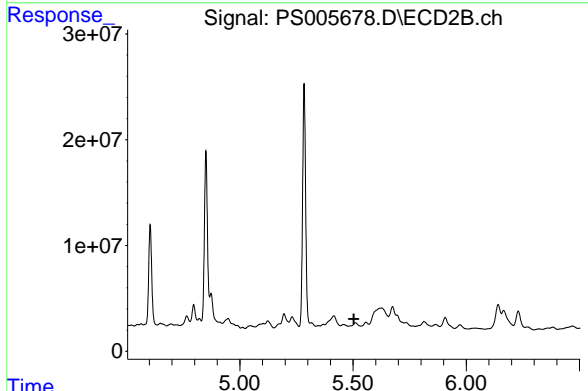


#5 DICAMBA
 R.T.: 5.415 min
 Delta R.T.: -0.005 min
 Response: 20912047
 Conc: 5.28 ng/ml

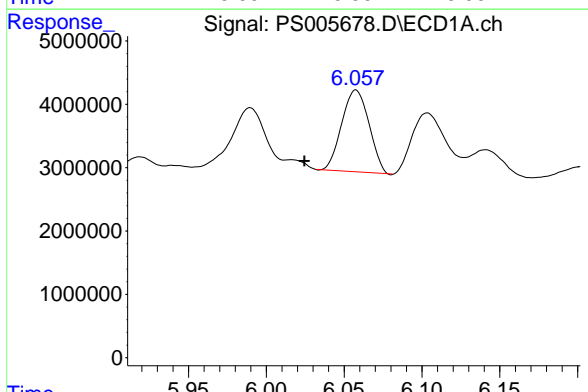


#6 MCPP
 R.T.: 5.876 min
 Delta R.T.: -0.013 min
 Response: 11349777
 Conc: 2.34 ug/ml

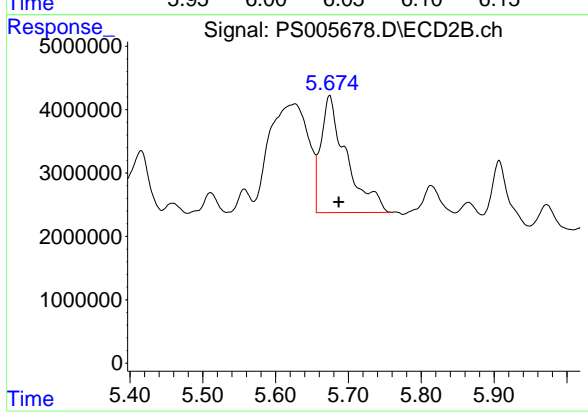
Instrument :
 ECD_S
 ClientSampled :
 GIS-BUILDING-2



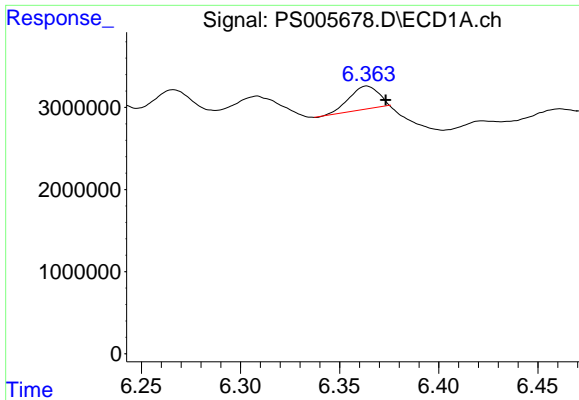
#6 MCPP
 R.T.: 0.000 min
 Exp R.T. : 5.504 min
 Response: 0
 Conc: N.D.



#7 MCPA
 R.T.: 6.058 min
 Delta R.T.: 0.033 min
 Response: 15742500
 Conc: 2.33 ug/ml



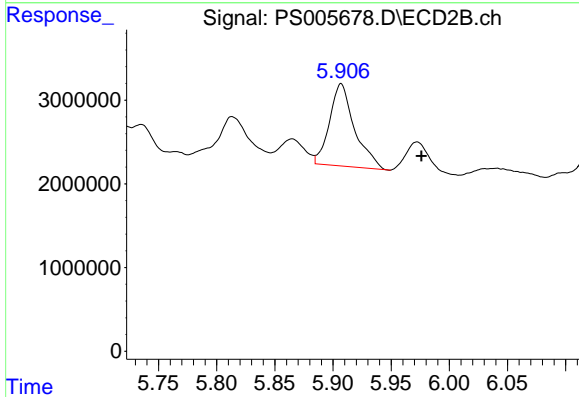
#7 MCPA
 R.T.: 5.674 min
 Delta R.T.: -0.013 min
 Response: 44952291
 Conc: 10.20 ug/ml



#8 DICHLORPROP

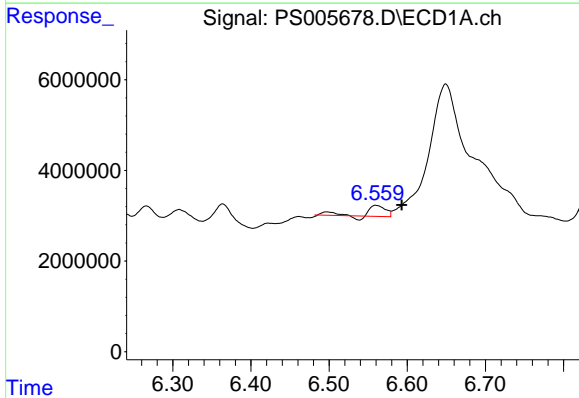
R.T.: 6.364 min
 Delta R.T.: -0.009 min
 Response: 2899737
 Conc: 1.91 ng/ml

Instrument :
 ECD_S
 ClientSampled :
 GIS-BUILDING-2



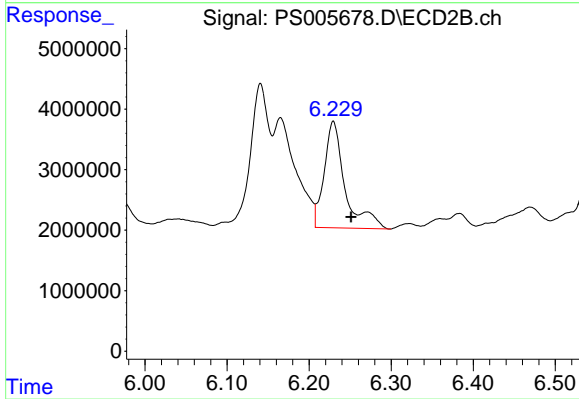
#8 DICHLORPROP

R.T.: 5.907 min
 Delta R.T.: -0.069 min
 Response: 14703219
 Conc: 14.41 ng/ml



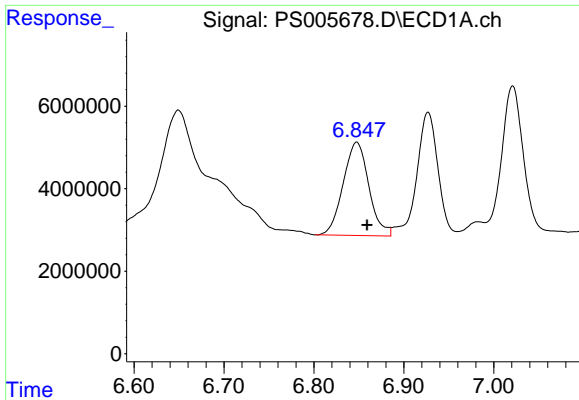
#9 2,4-D

R.T.: 6.562 min
 Delta R.T.: -0.031 min
 Response: 3314153
 Conc: 1.89 ng/ml



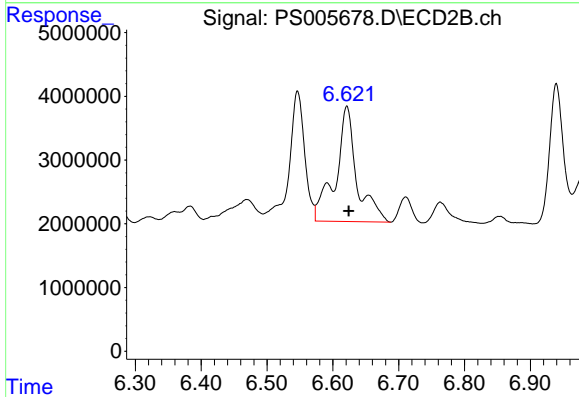
#9 2,4-D

R.T.: 6.230 min
 Delta R.T.: -0.021 min
 Response: 31096950
 Conc: 26.63 ng/ml

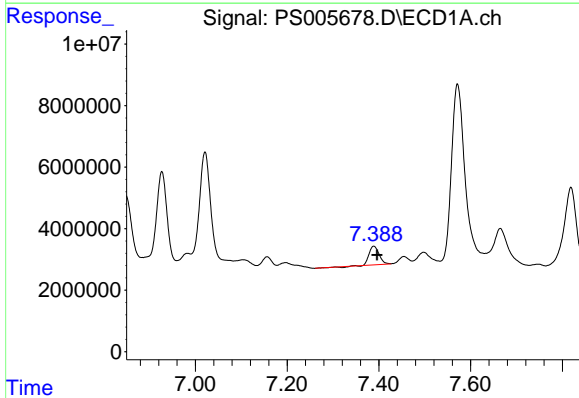


#10 Pentachlorophenol
 R.T.: 6.847 min
 Delta R.T.: -0.012 min
 Response: 44917799
 Conc: 2.07 ng/ml

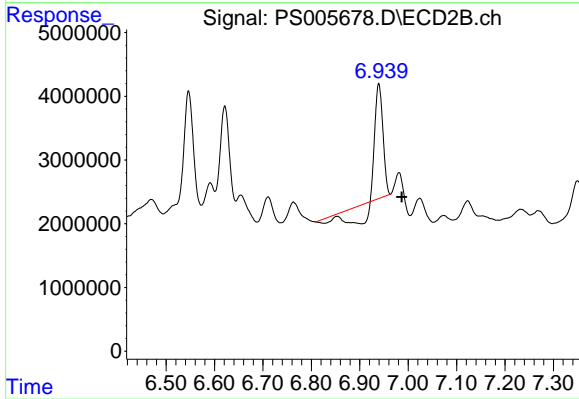
Instrument :
 ECD_S
 ClientSampleId :
 GIS-BUILDING-2



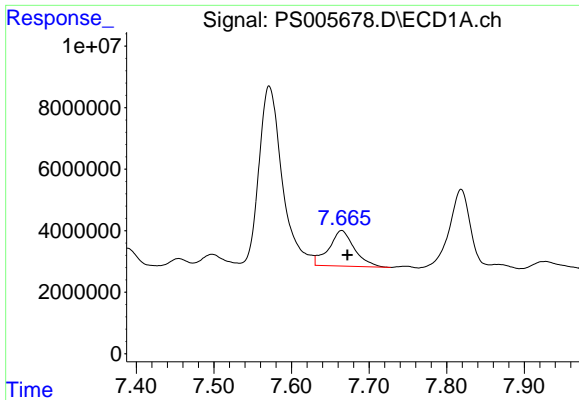
#10 Pentachlorophenol
 R.T.: 6.621 min
 Delta R.T.: -0.003 min
 Response: 40515304
 Conc: 3.01 ng/ml



#11 2,4,5-TP (SILVEX)
 R.T.: 7.389 min
 Delta R.T.: -0.007 min
 Response: 9096377
 Conc: 1.03 ng/ml



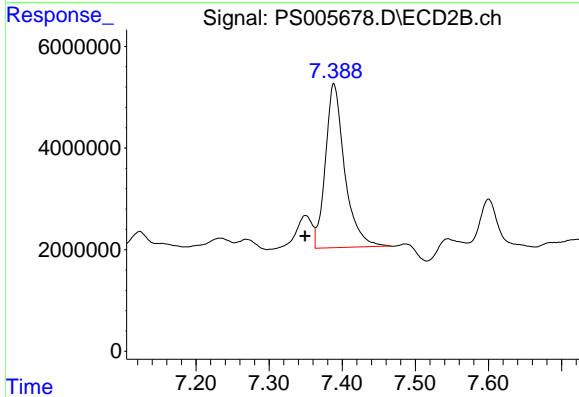
#11 2,4,5-TP (SILVEX)
 R.T.: 6.939 min
 Delta R.T.: -0.047 min
 Response: 11465931
 Conc: 2.06 ng/ml



#12 2,4,5-T

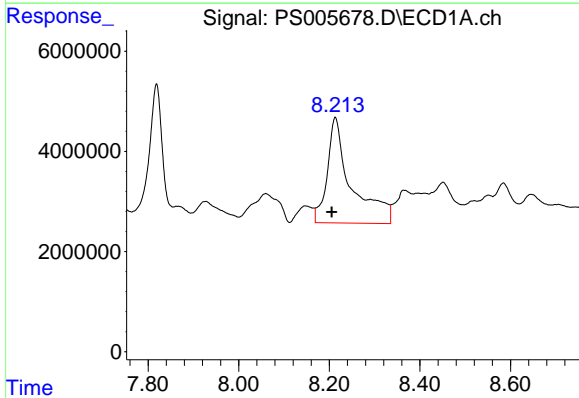
R.T.: 7.665 min
 Delta R.T.: -0.007 min
 Response: 26520918
 Conc: 3.13 ng/ml

Instrument :
 ECD_S
ClientSampled :
 GIS-BUILDING-2



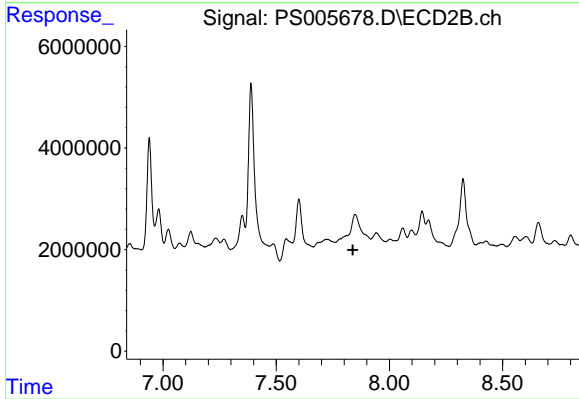
#12 2,4,5-T

R.T.: 7.389 min
 Delta R.T.: 0.040 min
 Response: 59012591
 Conc: 11.50 ng/ml



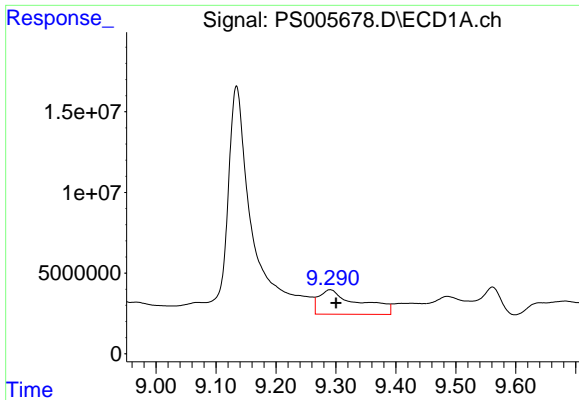
#13 2,4-DB

R.T.: 8.214 min
 Delta R.T.: 0.008 min
 Response: 77417364
 Conc: 61.80 ng/ml



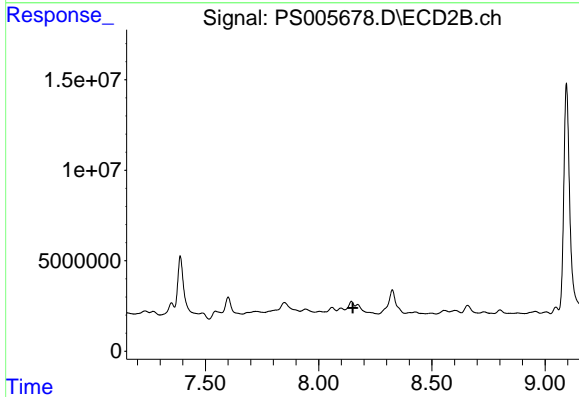
#13 2,4-DB

R.T.: 0.000 min
 Exp R.T. : 7.838 min
 Response: 0
 Conc: N.D.

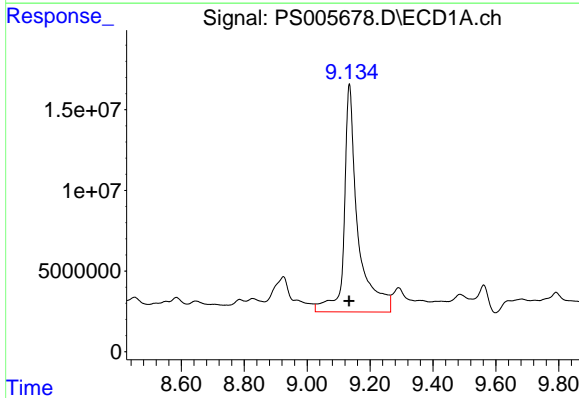


#14 DINOSEB
 R.T.: 9.290 min
 Delta R.T.: -0.010 min
 Response: 70389591
 Conc: 10.09 ng/ml

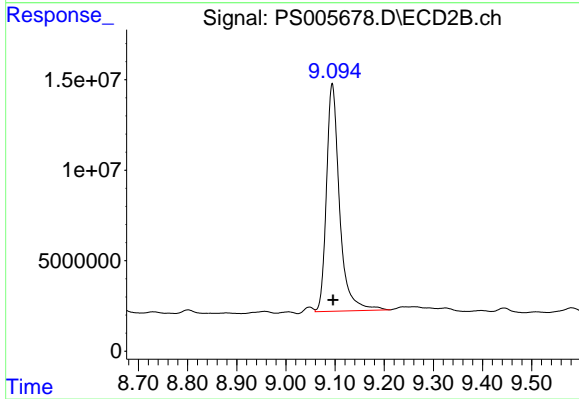
Instrument :
 ECD_S
 ClientSampled :
 GIS-BUILDING-2



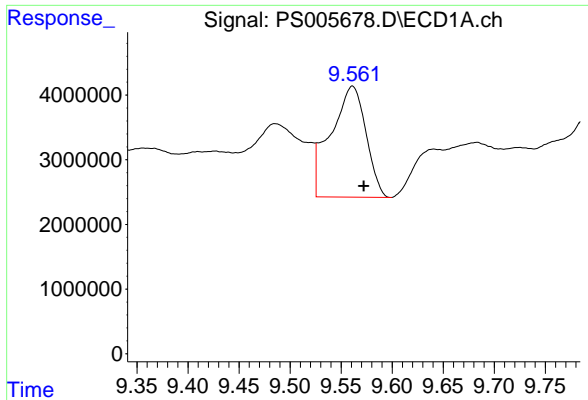
#14 DINOSEB
 R.T.: 0.000 min
 Exp R.T. : 8.151 min
 Response: 0
 Conc: N.D.



#15 Picloram
 R.T.: 9.135 min
 Delta R.T.: 0.001 min
 Response: 427232897
 Conc: 34.29 ng/ml



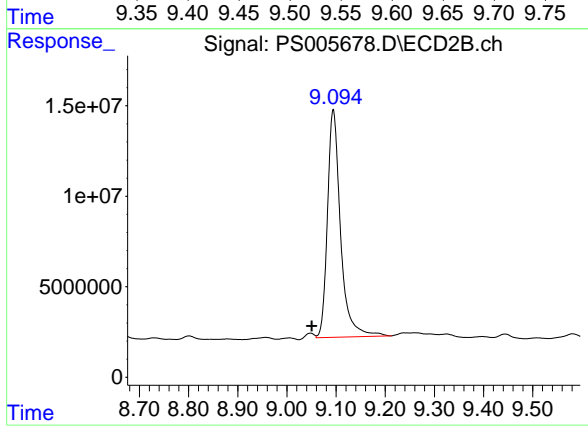
#15 Picloram
 R.T.: 9.094 min
 Delta R.T.: -0.001 min
 Response: 232803211
 Conc: 29.72 ng/ml



#16 DCPA

R.T.: 9.561 min
Delta R.T.: -0.012 min
Response: 41183876
Conc: 3.78 ng/ml

Instrument :
ECD_S
ClientSampled :
GIS-BUILDING-2



#16 DCPA

R.T.: 9.094 min
Delta R.T.: 0.044 min
Response: 232803211
Conc: 32.94 ng/ml