

Data Path : Z:\pestpcbsrv\HPCHEM1\ECD_S\Data\PS082119\
 Data File : PS006272.D
 Signal(s) : Signal #1: ECD1A.ch Signal #2: ECD2B.ch
 Acq On : 21 Aug 2019 13:36
 Operator : SM\AJ
 Sample : HSTDCCC750
 Misc :
 ALS Vial : 3 Sample Multiplier: 1

Instrument :
 ECD_S
 ClientSampleId :

Integration File signal 1: autoint1.e
 Integration File signal 2: autoint2.e
 Quant Time: Aug 22 01:49:24 2019
 Quant Method : Z:\pestpcbsrv\HPCHEM1\ECD_S\Method\PS081419.M
 Quant Title : 8080.M
 QLast Update : Wed Aug 14 15:09:52 2019
 Response via : Initial Calibration
 Integrator: ChemStation

Volume Inj. : 2 µl
 Signal #1 Phase : Rtx-CLPesticides Signal #2 Phase: Rtx-CLPesticides2
 Signal #1 Info : 30M x 0.32mm x0.5 Signal #2 Info : 30M x 0.32mm x 0.25µm

	Compound	RT#1	RT#2	Resp#1	Resp#2	ng/ml	ng/ml

System Monitoring Compounds							
4) S	2,4-DCAA	5.487	5.216	690.0E6	378.2E6	799.368	768.876
Target Compounds							
1) T	Dalapon	2.051	1.760	702.9E6	399.7E6	645.047	636.943
2) T	3,5-DICHL...	4.853	4.519	800.2E6	441.8E6	742.214	729.403
3) T	4-Nitroph...	5.342	4.902	274.2E6	180.0E6	730.412	726.699
5) T	DICAMBA	5.638	5.344	2377.8E6	1334.6E6	740.377	723.573
6) T	MCP P	5.789	5.427	146.5E6	93684360	65.084	75.729
7) T	MCPA	5.922	5.605	238.9E6	152.6E6	75.669	74.645
8) T	DICHLORPROP	6.269	5.885	558.5E6	327.0E6	736.400	735.505
9) T	2,4-D	6.486	6.157	601.0E6	397.7E6	737.588	723.434
10) T	Pentachlo...	6.743	6.523	8851.4E6	4993.8E6	748.790	738.729
11) T	2,4,5-TP ...	7.280	6.886	3405.3E6	1926.9E6	746.473	740.508
12) T	2,4,5-T	7.554	7.281	3804.2E6	1946.6E6	769.375	782.996
13) T	2,4-DB	8.085	7.732	469.1E6	244.2E6	753.302	733.891
14) T	DINOSEB	9.170	8.041	2797.8E6	1413.2E6	764.265	735.703
15) T	Picloram	9.006	8.979	5480.9E6	3148.4E6	736.620	697.958
16) T	DCPA	9.443	8.979	4464.2E6	3148.4E6	770.275	902.853

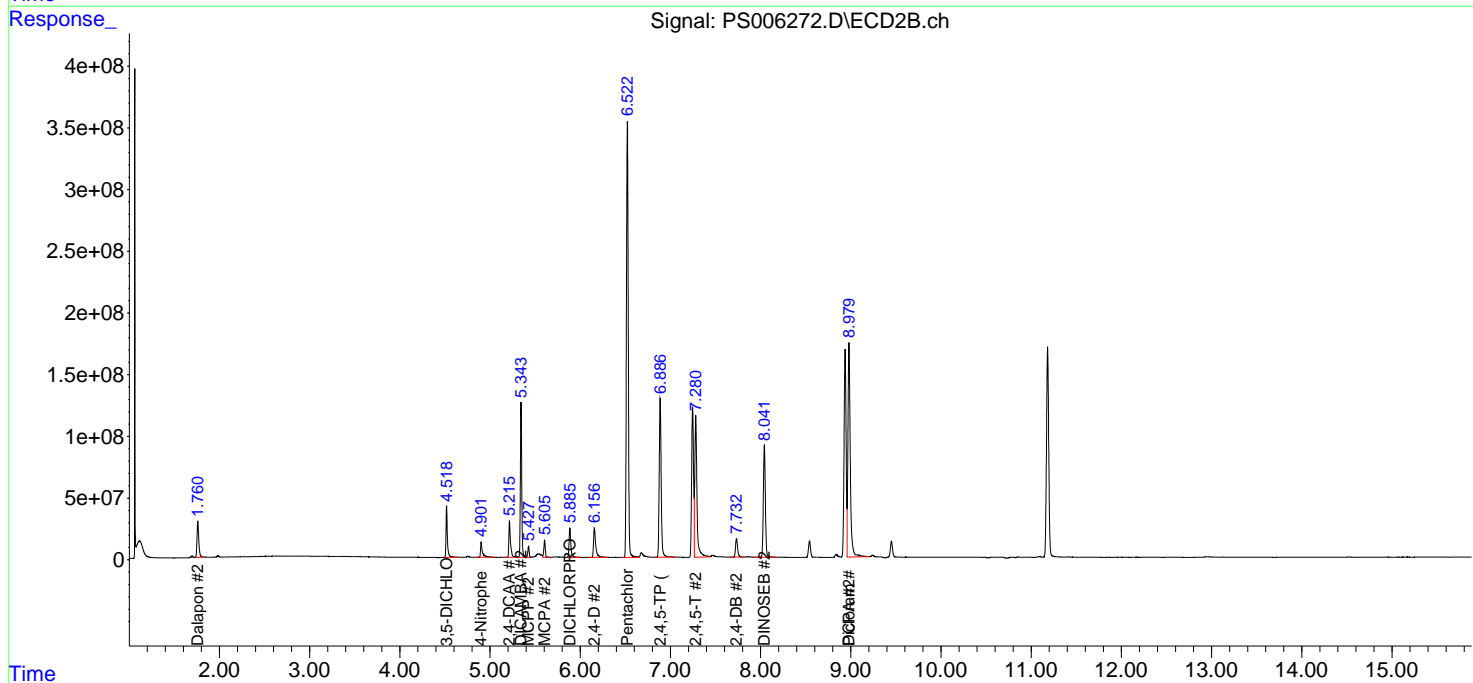
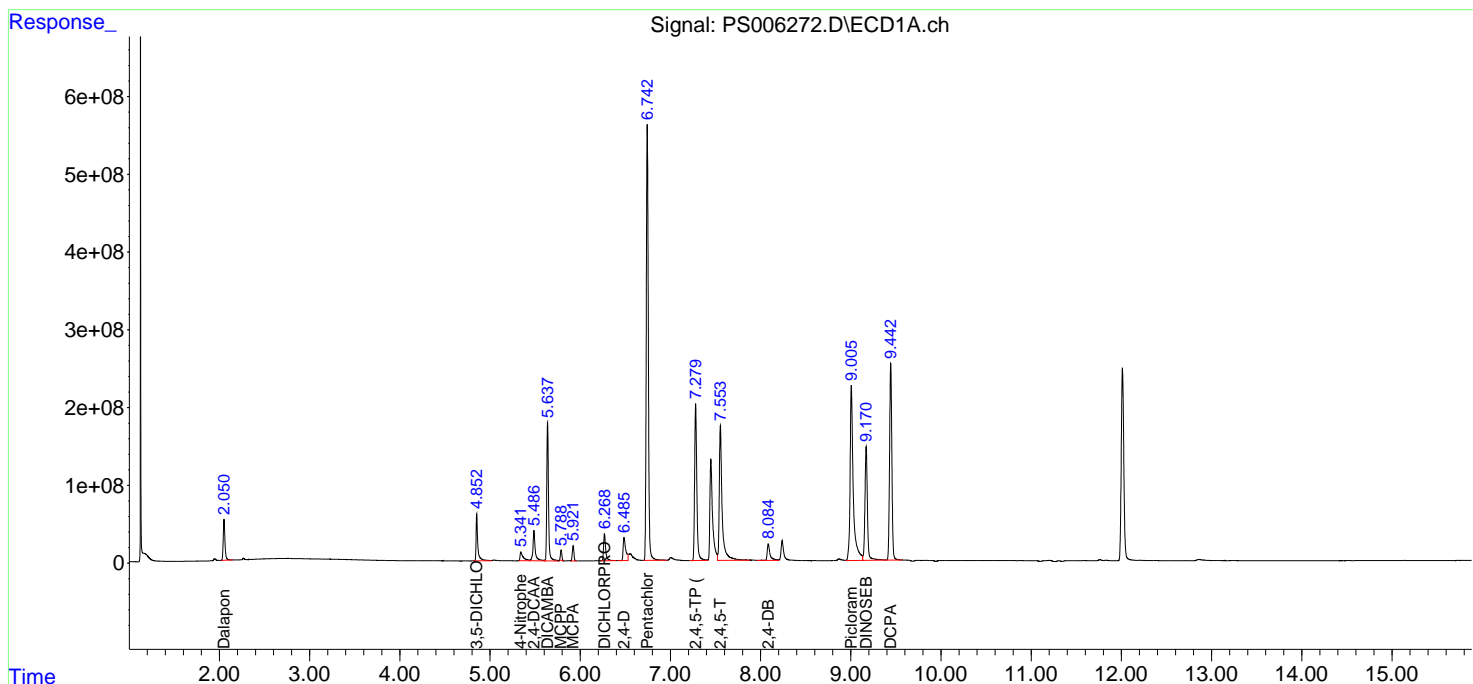
(f)=RT Delta > 1/2 Window (#)=Amounts differ by > 25% (m)=manual int.

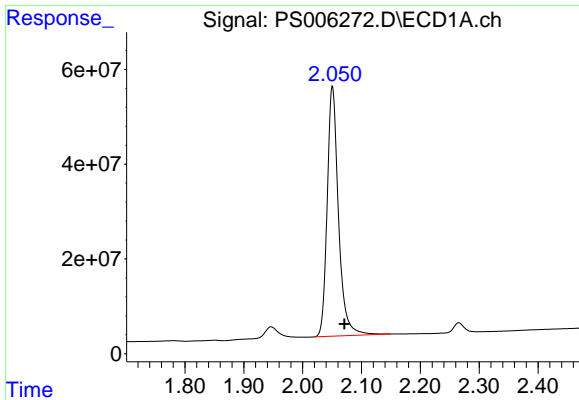
Data Path : Z:\pestpcbsrv\HPCHEM1\ECD_S\Data\PS082119\
 Data File : PS006272.D
 Signal(s) : Signal #1: ECD1A.ch Signal #2: ECD2B.ch
 Acq On : 21 Aug 2019 13:36
 Operator : SM\AJ
 Sample : HSTDCCC750
 Misc :
 ALS Vial : 3 Sample Multiplier: 1

Instrument :
 ECD_S
 ClientSampled :

Integration File signal 1: autoint1.e
 Integration File signal 2: autoint2.e
 Quant Time: Aug 22 01:49:24 2019
 Quant Method : Z:\pestpcbsrv\HPCHEM1\ECD_S\Method\PS081419.M
 Quant Title : 8080.M
 QLast Update : Wed Aug 14 15:09:52 2019
 Response via : Initial Calibration
 Integrator: ChemStation

Volume Inj. : 2 µl
 Signal #1 Phase : Rtx-CLPesticides Signal #2 Phase: Rtx-CLPesticides2
 Signal #1 Info : 30M x 0.32mm x 0.5 Signal #2 Info : 30M x 0.32mm x 0.25µm

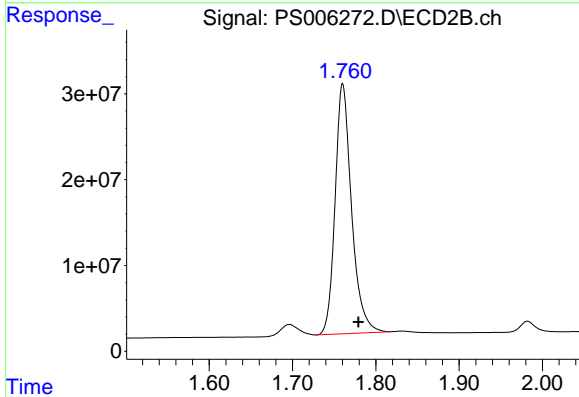




#1 Dalapon

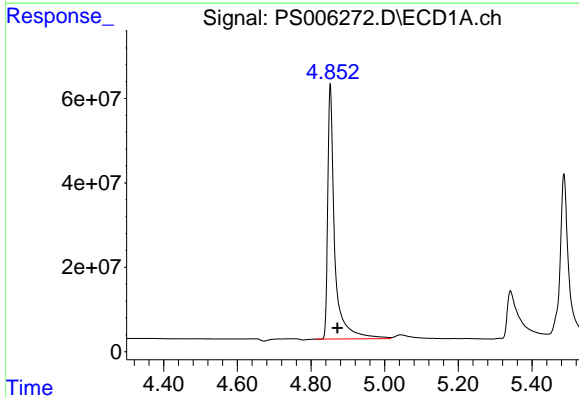
R.T.: 2.051 min
 Delta R.T.: -0.020 min
 Response: 702859497
 Conc: 645.05 ng/ml

Instrument :
 ECD_S
 ClientSampleId :



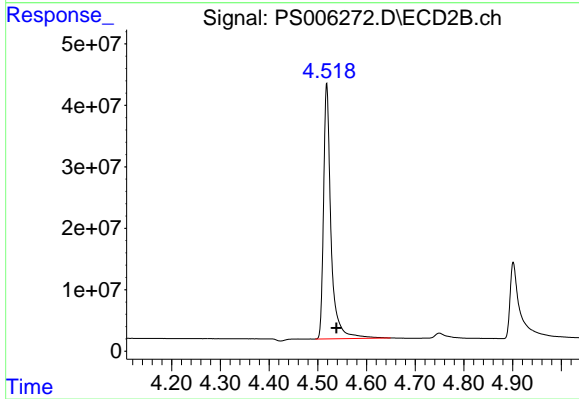
#1 Dalapon

R.T.: 1.760 min
 Delta R.T.: -0.019 min
 Response: 399677649
 Conc: 636.94 ng/ml



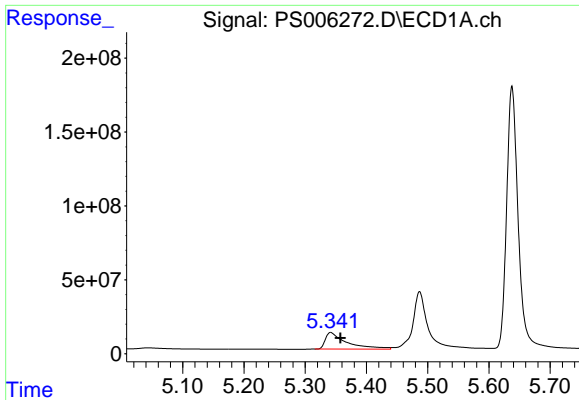
#2 3,5-DICHLOROBENZOIC ACID

R.T.: 4.853 min
 Delta R.T.: -0.019 min
 Response: 800204841
 Conc: 742.21 ng/ml



#2 3,5-DICHLOROBENZOIC ACID

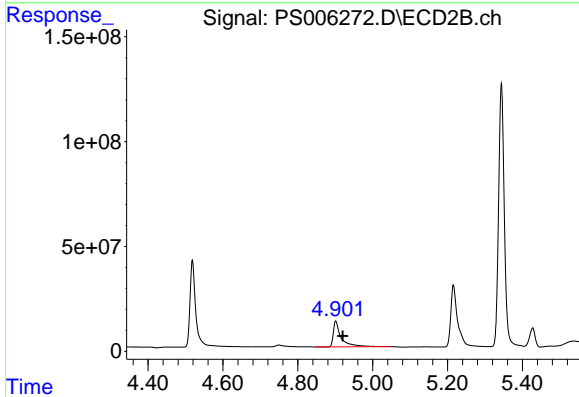
R.T.: 4.519 min
 Delta R.T.: -0.019 min
 Response: 441804128
 Conc: 729.40 ng/ml



#3 4-Nitrophenol

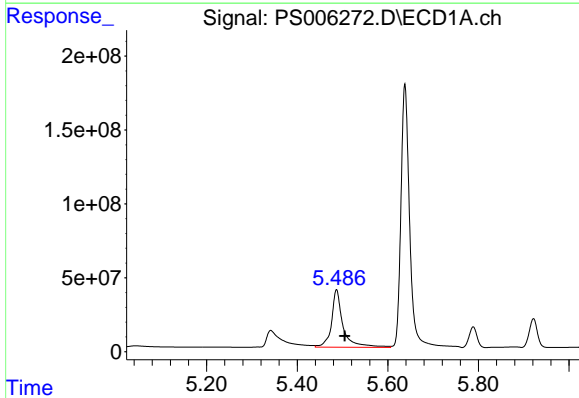
R.T.: 5.342 min
Delta R.T.: -0.016 min
Response: 274208677
Conc: 730.41 ng/ml

Instrument :
ECD_S
ClientSampled :



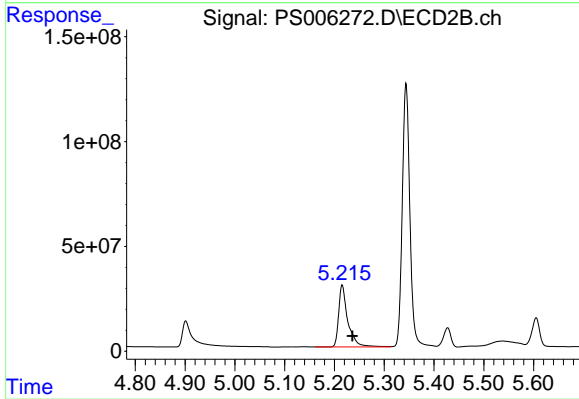
#3 4-Nitrophenol

R.T.: 4.902 min
Delta R.T.: -0.018 min
Response: 180021536
Conc: 726.70 ng/ml



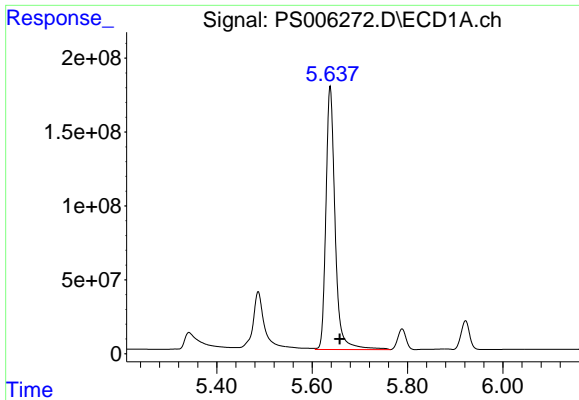
#4 2,4-DCAA

R.T.: 5.487 min
Delta R.T.: -0.018 min
Response: 690015433
Conc: 799.37 ng/ml



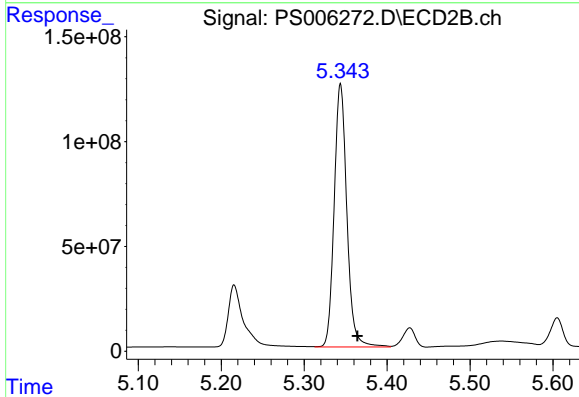
#4 2,4-DCAA

R.T.: 5.216 min
Delta R.T.: -0.020 min
Response: 378173304
Conc: 768.88 ng/ml

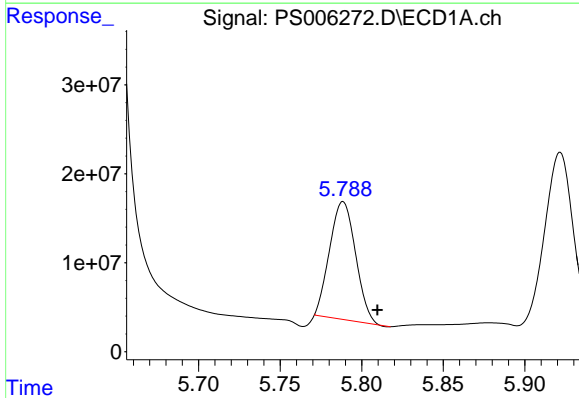


#5 DICAMBA
 R.T.: 5.638 min
 Delta R.T.: -0.020 min
 Response: 2377836959
 Conc: 740.38 ng/ml

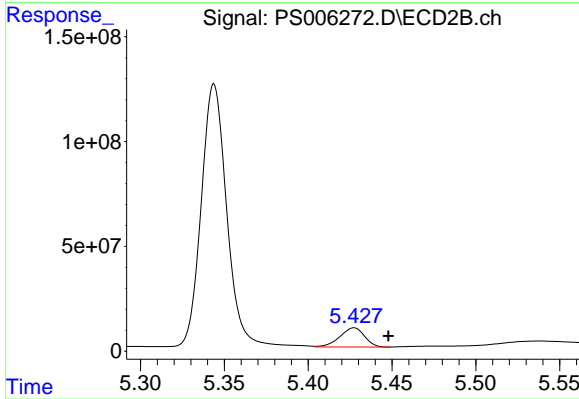
Instrument :
 ECD_S
 ClientSampleId :



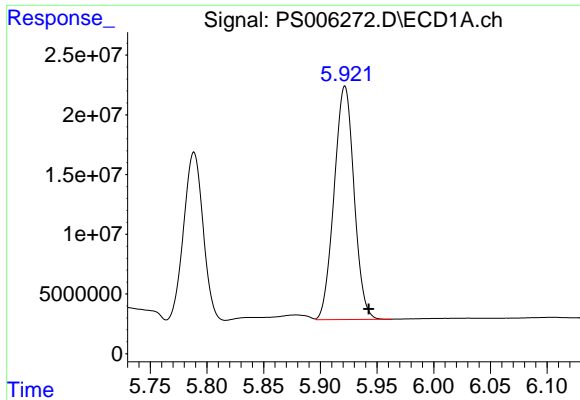
#5 DICAMBA
 R.T.: 5.344 min
 Delta R.T.: -0.020 min
 Response: 1334633106
 Conc: 723.57 ng/ml



#6 MCP
 R.T.: 5.789 min
 Delta R.T.: -0.021 min
 Response: 146466622
 Conc: 65.08 ug/ml

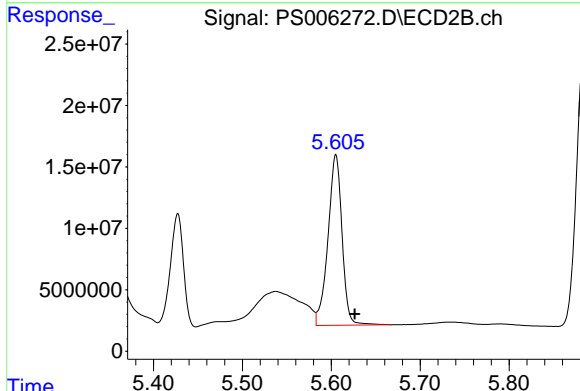


#6 MCP
 R.T.: 5.427 min
 Delta R.T.: -0.021 min
 Response: 93684360
 Conc: 75.73 ug/ml

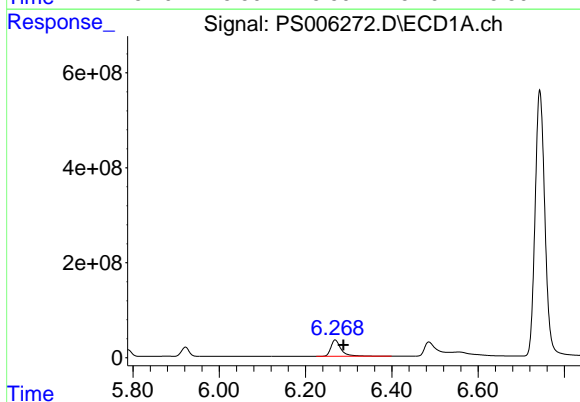


#7 MCPA
 R.T.: 5.922 min
 Delta R.T.: -0.021 min
 Response: 238893842
 Conc: 75.67 ug/ml

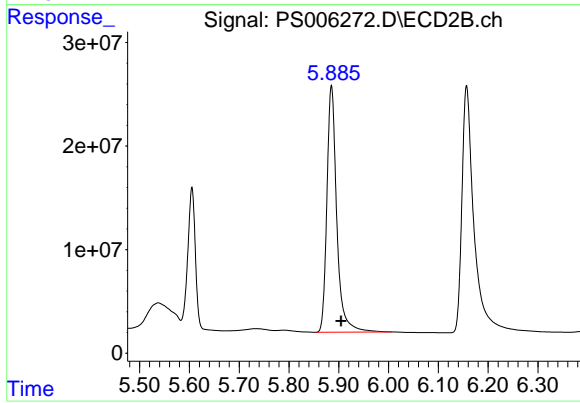
Instrument :
 ECD_S
 ClientSampled :



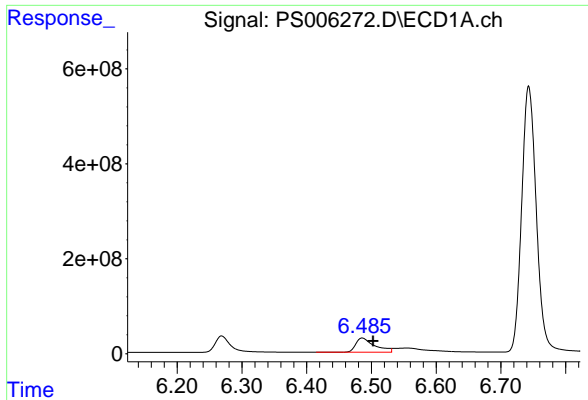
#7 MCPA
 R.T.: 5.605 min
 Delta R.T.: -0.021 min
 Response: 152553833
 Conc: 74.65 ug/ml



#8 DICHLORPROP
 R.T.: 6.269 min
 Delta R.T.: -0.019 min
 Response: 558467074
 Conc: 736.40 ng/ml



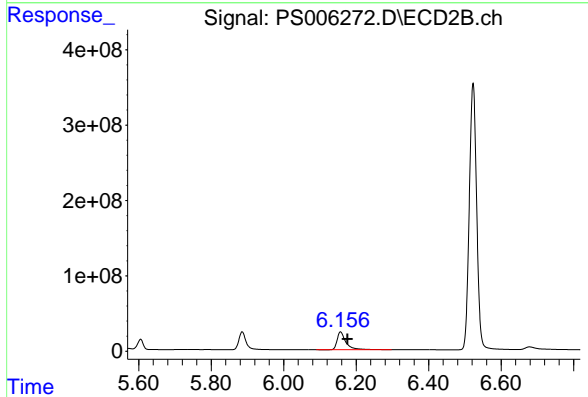
#8 DICHLORPROP
 R.T.: 5.885 min
 Delta R.T.: -0.020 min
 Response: 327009045
 Conc: 735.51 ng/ml



#9 2,4-D

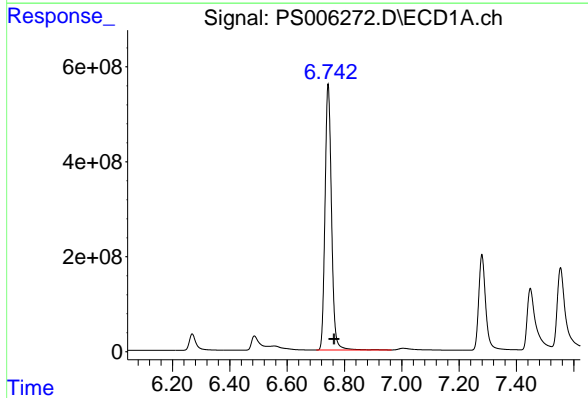
R.T.: 6.486 min
 Delta R.T.: -0.017 min
 Response: 600974767
 Conc: 737.59 ng/ml

Instrument :
 ECD_S
 ClientSampled :



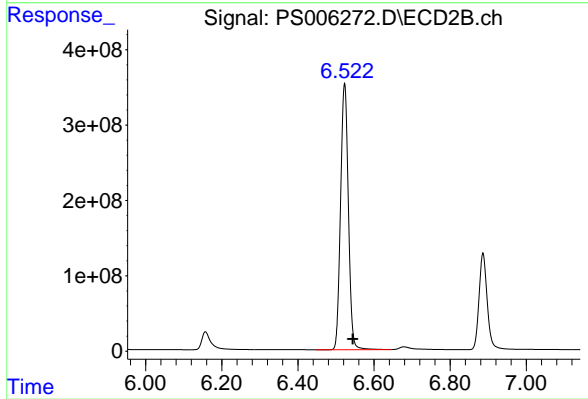
#9 2,4-D

R.T.: 6.157 min
 Delta R.T.: -0.019 min
 Response: 397682121
 Conc: 723.43 ng/ml



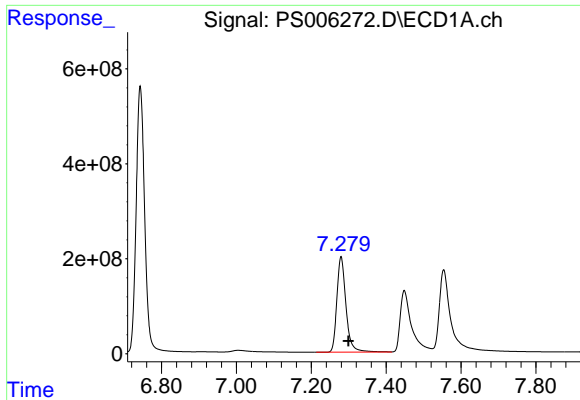
#10 Pentachlorophenol

R.T.: 6.743 min
 Delta R.T.: -0.021 min
 Response: 8851353160
 Conc: 748.79 ng/ml



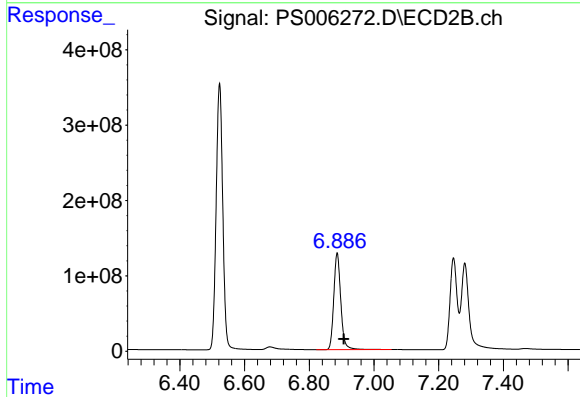
#10 Pentachlorophenol

R.T.: 6.523 min
 Delta R.T.: -0.021 min
 Response: 4993751830
 Conc: 738.73 ng/ml

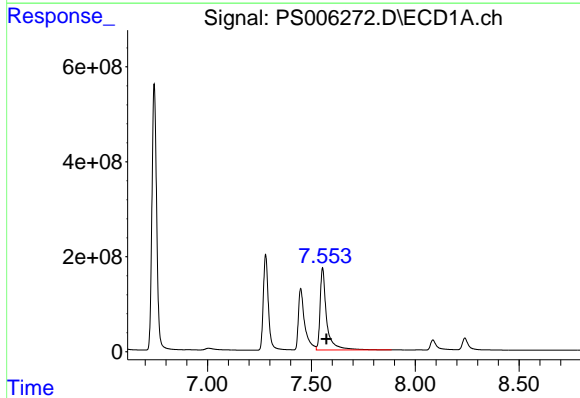


#11 2,4,5-TP (SILVEX)
 R.T.: 7.280 min
 Delta R.T.: -0.020 min
 Response: 3405255712
 Conc: 746.47 ng/ml

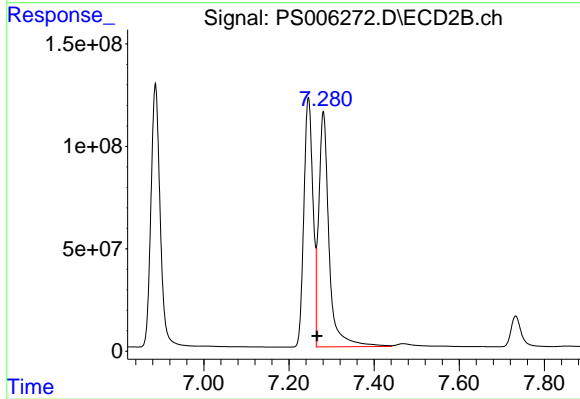
Instrument :
 ECD_S
 ClientSampled :



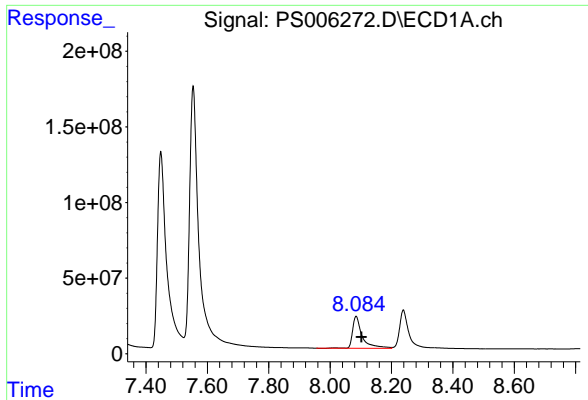
#11 2,4,5-TP (SILVEX)
 R.T.: 6.886 min
 Delta R.T.: -0.020 min
 Response: 1926870711
 Conc: 740.51 ng/ml



#12 2,4,5-T
 R.T.: 7.554 min
 Delta R.T.: -0.019 min
 Response: 3804236890
 Conc: 769.37 ng/ml



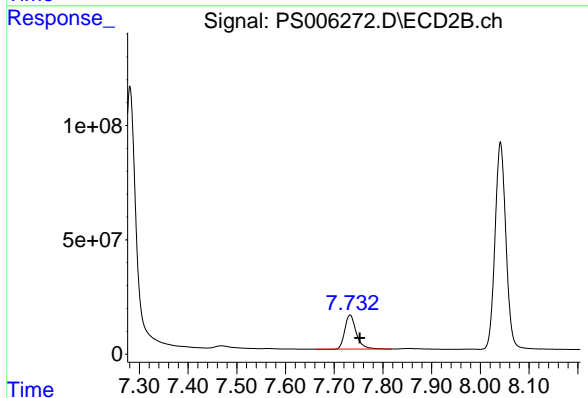
#12 2,4,5-T
 R.T.: 7.281 min
 Delta R.T.: 0.015 min
 Response: 1946568290
 Conc: 783.00 ng/ml



#13 2,4-DB

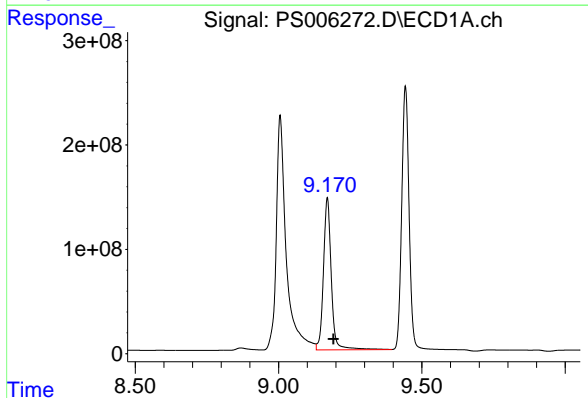
R.T.: 8.085 min
Delta R.T.: -0.018 min
Response: 469145453
Conc: 753.30 ng/ml

Instrument :
ECD_S
ClientSampled :



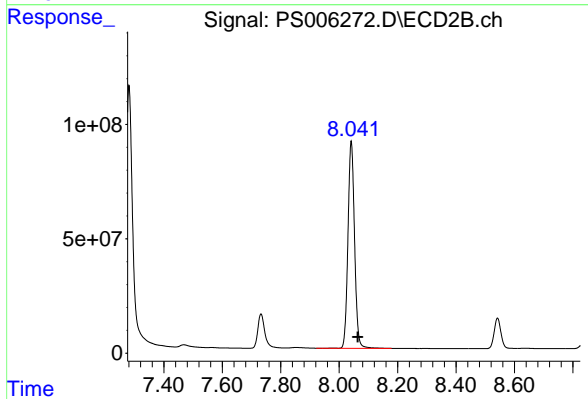
#13 2,4-DB

R.T.: 7.732 min
Delta R.T.: -0.020 min
Response: 244240909
Conc: 733.89 ng/ml



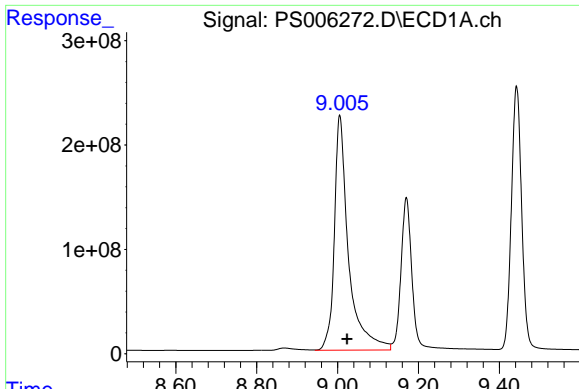
#14 DINOSEB

R.T.: 9.170 min
Delta R.T.: -0.022 min
Response: 2797816092
Conc: 764.27 ng/ml



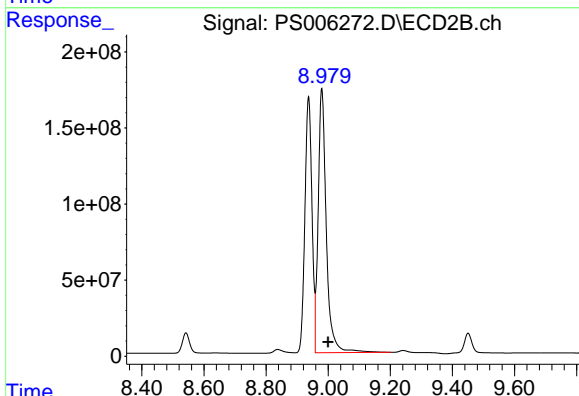
#14 DINOSEB

R.T.: 8.041 min
Delta R.T.: -0.022 min
Response: 1413158027
Conc: 735.70 ng/ml

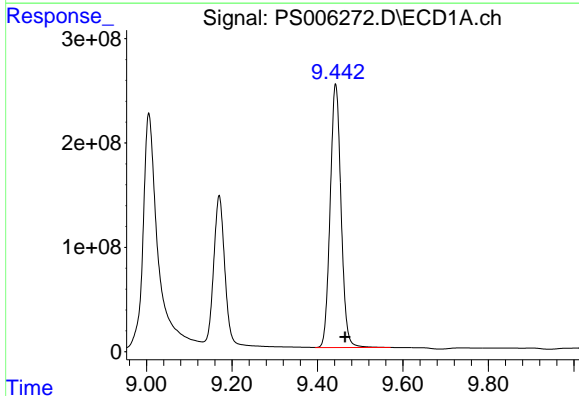


#15 Picloram
 R.T.: 9.006 min
 Delta R.T.: -0.018 min
 Response: 5480904861
 Conc: 736.62 ng/ml

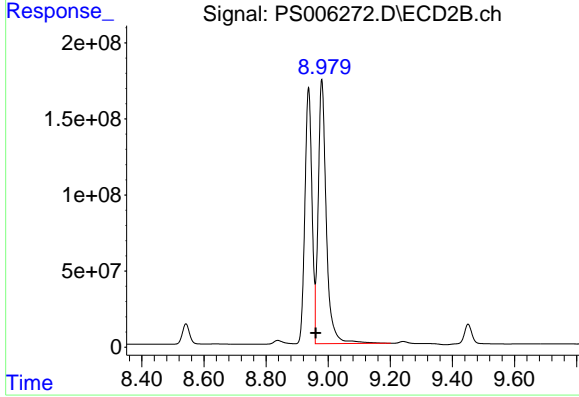
Instrument :
 ECD_S
 ClientSampled :



#15 Picloram
 R.T.: 8.979 min
 Delta R.T.: -0.021 min
 Response: 3148386265
 Conc: 697.96 ng/ml



#16 DCPA
 R.T.: 9.443 min
 Delta R.T.: -0.022 min
 Response: 4464176289
 Conc: 770.27 ng/ml



#16 DCPA
 R.T.: 8.979 min
 Delta R.T.: 0.020 min
 Response: 3148386265
 Conc: 902.85 ng/ml