

Data Path : Z:\pestpcbsrv\HPCHEM1\ECD_S\Data\PS082923\
 Data File : PS024191.D
 Signal(s) : Signal #1: ECD1A.ch Signal #2: ECD2B.ch
 Acq On : 29 Aug 2023 08:38
 Operator : AR\AJ
 Sample : I.BLK
 Misc :
 ALS Vial : 2 Sample Multiplier: 1

Instrument :
 ECD_S
 ClientSampleId :

Integration File signal 1: autoint1.e
 Integration File signal 2: autoint2.e
 Quant Time: Aug 29 19:20:23 2023
 Quant Method : Z:\pestpcbsrv\HPCHEM1\ECD_S\Method\PS082823.M
 Quant Title : 8080.M
 QLast Update : Mon Aug 28 16:48:10 2023
 Response via : Initial Calibration
 Integrator: ChemStation

Volume Inj. : 2 µl
 Signal #1 Phase : Rtx-CLPesticides Signal #2 Phase: Rtx-CLPesticides2
 Signal #1 Info : 30M x 0.32mm x0.5 Signal #2 Info : 30M x 0.32mm x 0.25µm

	Compound	RT#1	RT#2	Resp#1	Resp#2	ng/ml	ng/ml

System Monitoring Compounds							
4) S	2,4-DCAA	6.364	6.792	1062.3E6	355.0E6	533.201	528.603
Target Compounds							
1) T	Dalapon	2.520	2.577	6633578	4866761	3.052	4.615 #
3) T	4-Nitroph...	6.205	0.000	8428933	0	6.785	N.D. #
5) T	DICAMBA	6.495	6.998f	1089117	1026215	<MDL	<MDL #
6) T	MCPD	6.685	6.998f	2232717	1026215	<MDL	<MDL #
7) T	MCPA	6.724f	0.000	1940068	0	<MDL	N.D. #
8) T	DICHLORPROP	7.049f	7.584	2581172	1489749	1.135	2.050 #
9) T	2,4-D	7.259	7.799f	3218977	649501	1.210	<MDL #
10) T	Pentachlo...	7.518	0.000	3875663	0	<MDL	N.D. #
11) T	2,4,5-TP ...	8.047	8.633	1424873	1327468	<MDL	<MDL #
12) T	2,4,5-T	8.301	9.013	2422140	443505	<MDL	<MDL #
13) T	2,4-DB	8.792	9.499	-1522743	1213807	N.D.	2.641
14) T	DINOSEB	9.859	0.000	1315666	0	<MDL	N.D. #
15) T	Picloram	9.687	10.797	55814182	18040328	3.418	3.038
16) T	DCPA	10.123	10.797	2086191	18040328	<MDL	3.517 #

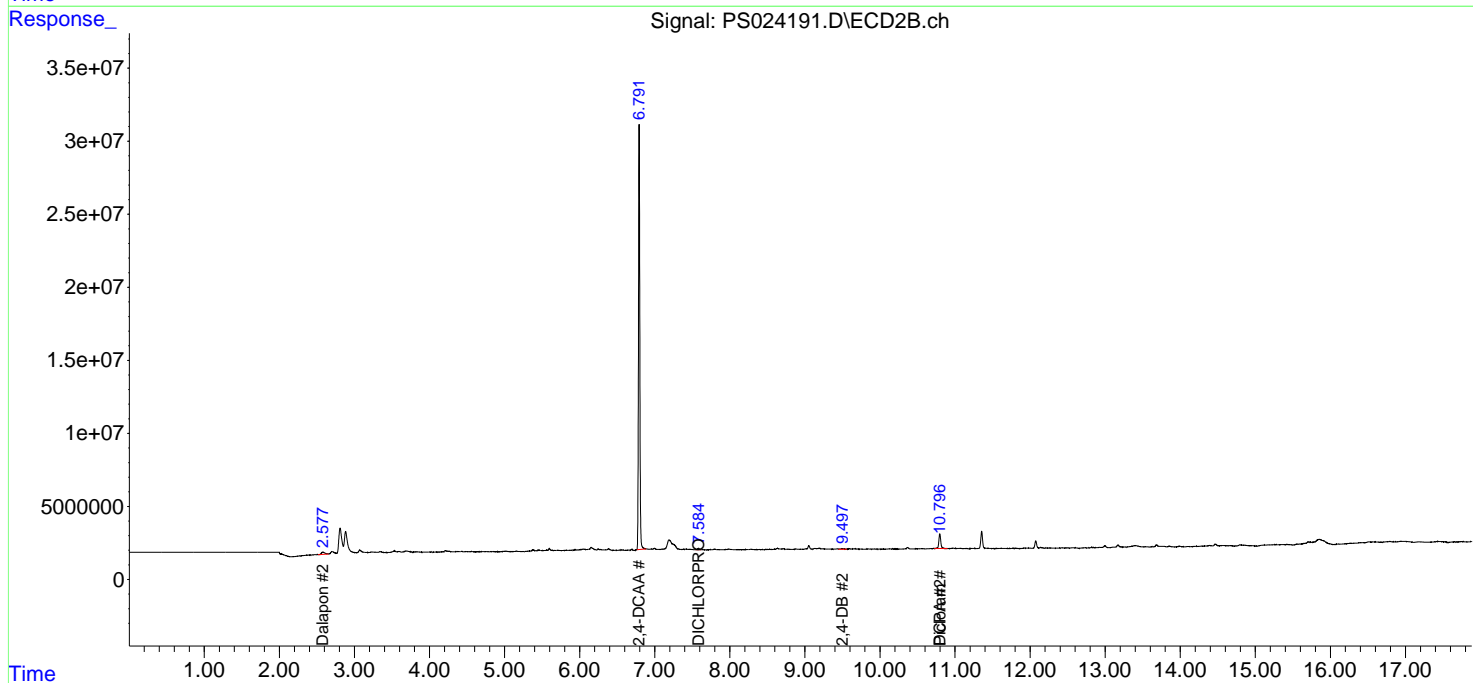
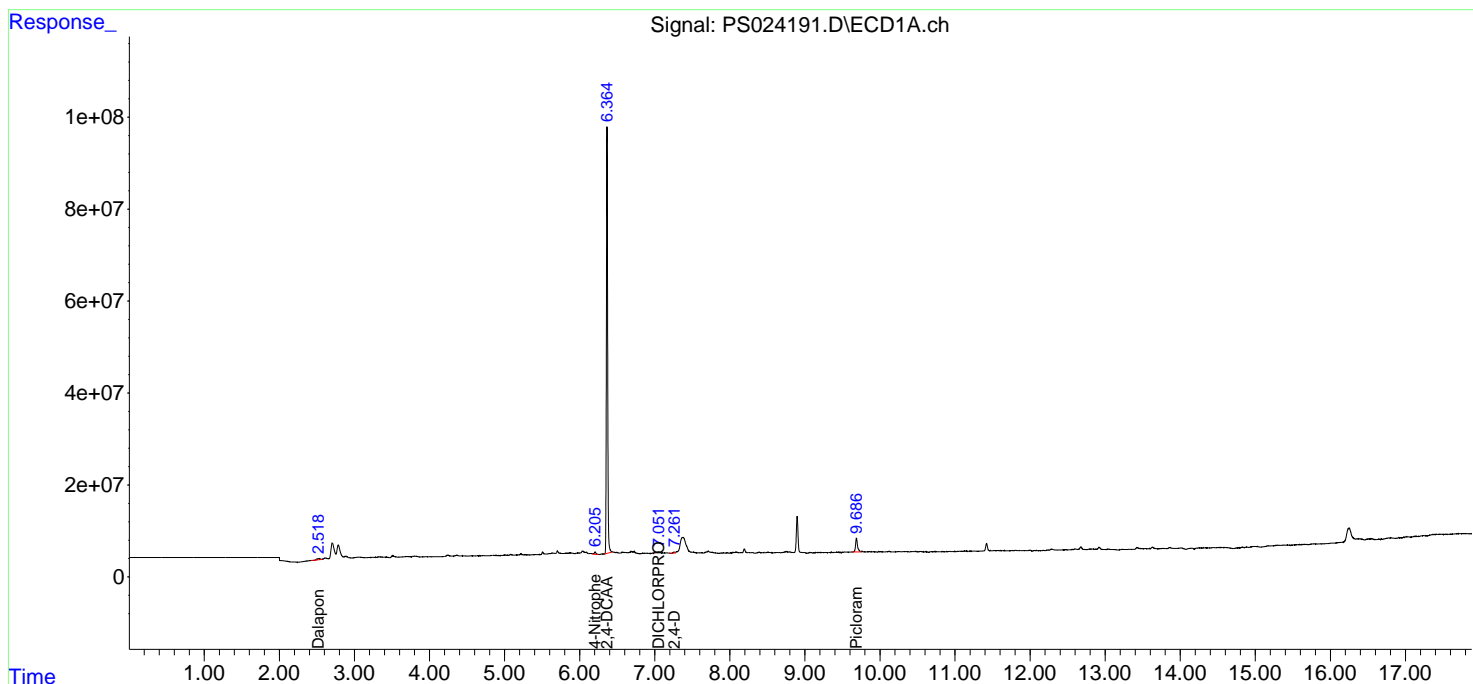
(f)=RT Delta > 1/2 Window (#)=Amounts differ by > 25% (m)=manual int.

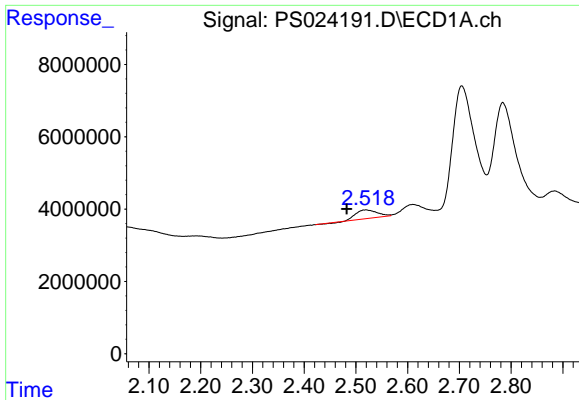
Data Path : Z:\pestpcbsrv\HPCHEM1\ECD_S\Data\PS082923\
 Data File : PS024191.D
 Signal(s) : Signal #1: ECD1A.ch Signal #2: ECD2B.ch
 Acq On : 29 Aug 2023 08:38
 Operator : AR\AJ
 Sample : I.BLK
 Misc :
 ALS Vial : 2 Sample Multiplier: 1

Instrument :
 ECD_S
 ClientSampleId :

Integration File signal 1: autoint1.e
 Integration File signal 2: autoint2.e
 Quant Time: Aug 29 19:20:23 2023
 Quant Method : Z:\pestpcbsrv\HPCHEM1\ECD_S\Method\PS082823.M
 Quant Title : 8080.M
 QLast Update : Mon Aug 28 16:48:10 2023
 Response via : Initial Calibration
 Integrator: ChemStation

Volume Inj. : 2 µl
 Signal #1 Phase : Rtx-CLPesticides Signal #2 Phase: Rtx-CLPesticides2
 Signal #1 Info : 30M x 0.32mm x0.5 Signal #2 Info : 30M x 0.32mm x 0.25µm

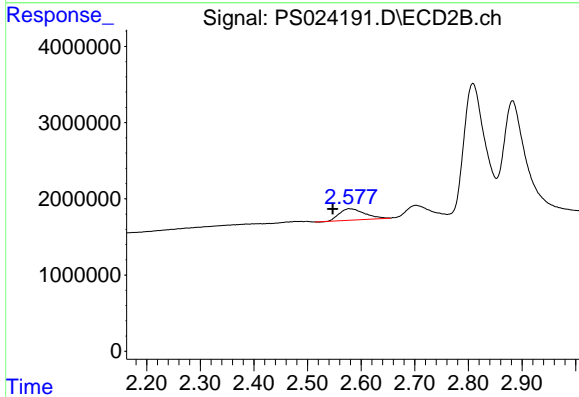




#1 Dalapon

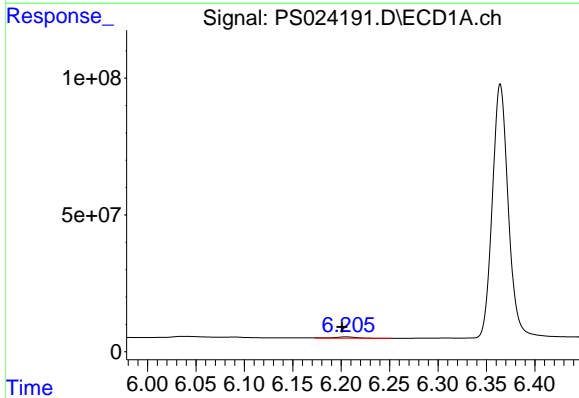
R.T.: 2.520 min
 Delta R.T.: 0.038 min
 Response: 6633578
 Conc: 3.05 ng/ml

Instrument :
 ECD_S
 ClientSampleId :



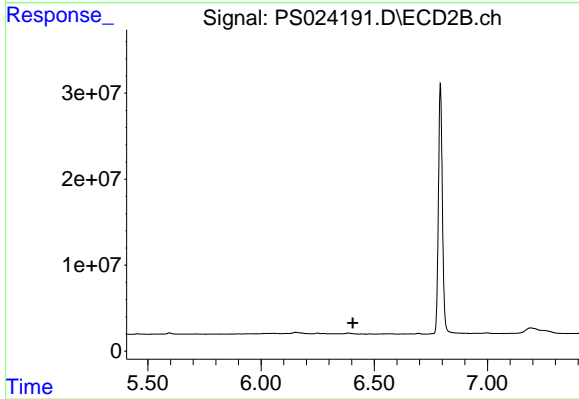
#1 Dalapon

R.T.: 2.577 min
 Delta R.T.: 0.030 min
 Response: 4866761
 Conc: 4.62 ng/ml



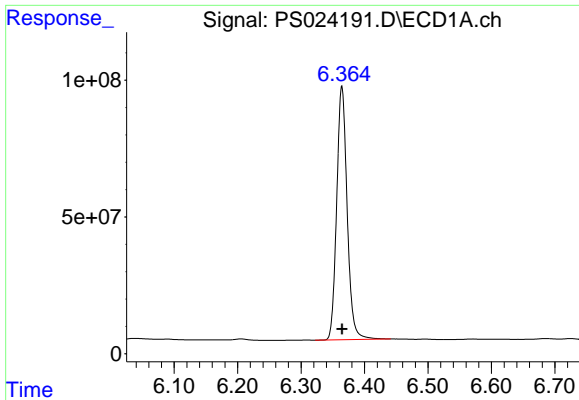
#3 4-Nitrophenol

R.T.: 6.205 min
 Delta R.T.: 0.004 min
 Response: 8428933
 Conc: 6.78 ng/ml



#3 4-Nitrophenol

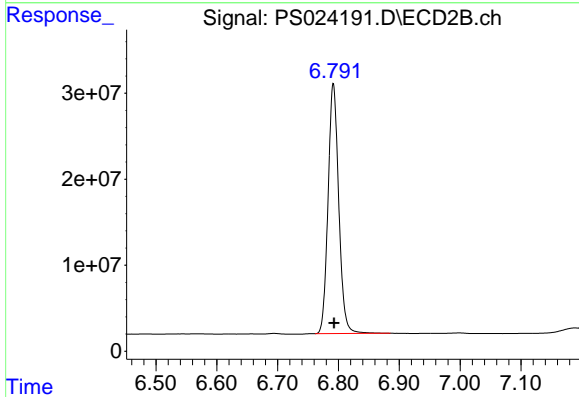
R.T.: 0.000 min
 Exp R.T. : 6.405 min
 Response: 0
 Conc: N.D.



#4 2,4-DCAA

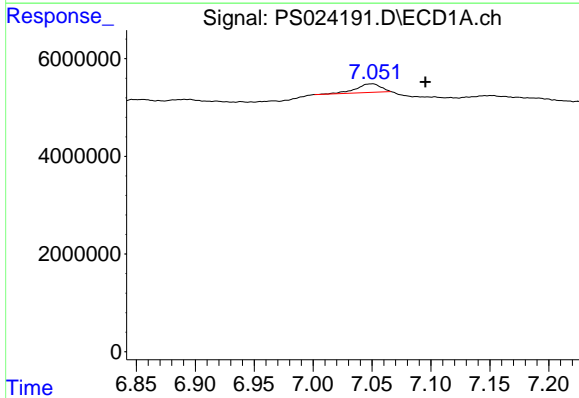
R.T.: 6.364 min
 Delta R.T.: 0.000 min
 Response: 1062308416
 Conc: 533.20 ng/ml

Instrument :
 ECD_S
 ClientSampleId :



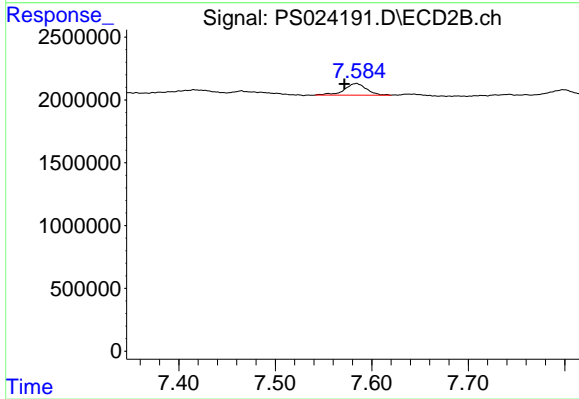
#4 2,4-DCAA

R.T.: 6.792 min
 Delta R.T.: -0.001 min
 Response: 355005492
 Conc: 528.60 ng/ml



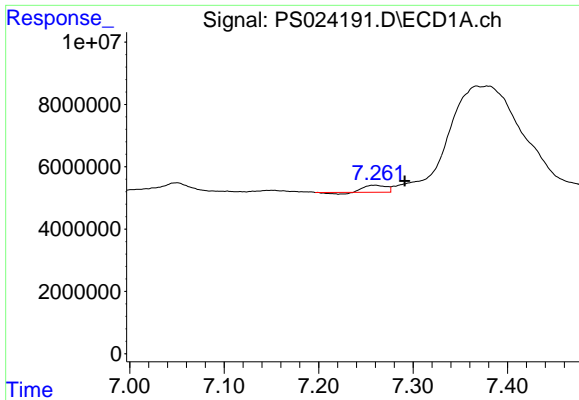
#8 DICHLORPROP

R.T.: 7.049 min
 Delta R.T.: -0.046 min
 Response: 2581172
 Conc: 1.14 ng/ml



#8 DICHLORPROP

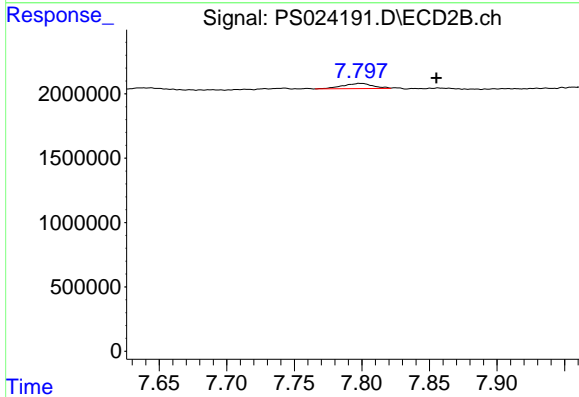
R.T.: 7.584 min
 Delta R.T.: 0.013 min
 Response: 1489749
 Conc: 2.05 ng/ml



#9 2,4-D

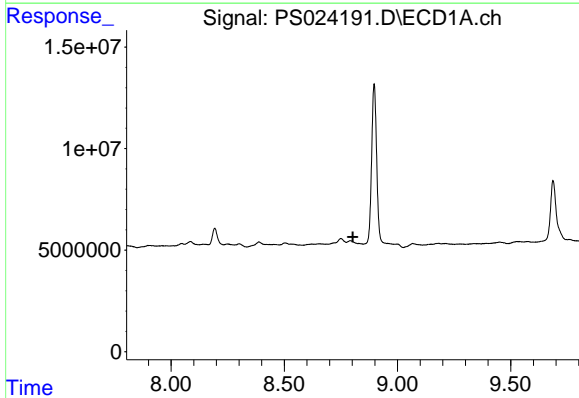
R.T.: 7.259 min
 Delta R.T.: -0.032 min
 Response: 3218977
 Conc: 1.21 ng/ml

Instrument :
 ECD_S
 ClientSampleId :



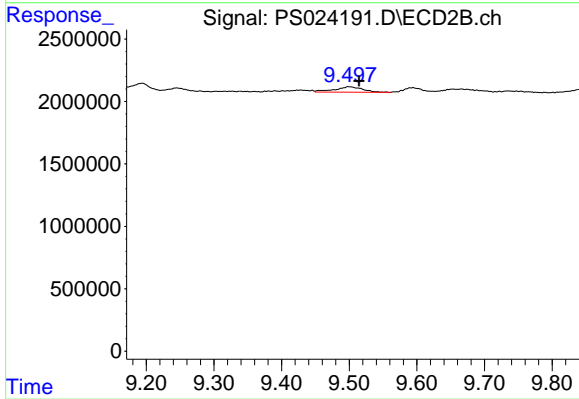
#9 2,4-D

R.T.: 7.799 min
 Delta R.T.: -0.056 min
 Response: 649501
 Conc: N.D.



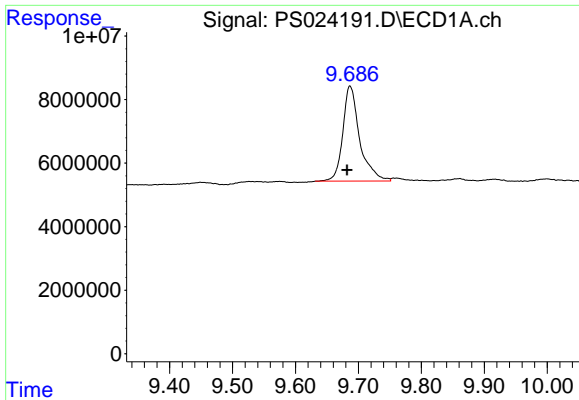
#13 2,4-DB

R.T.: 8.792 min
 Delta R.T.: -0.011 min
 Response: -1522743
 Conc: N.D.



#13 2,4-DB

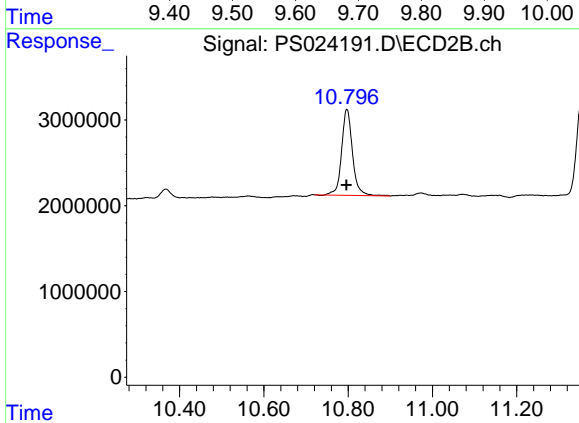
R.T.: 9.499 min
 Delta R.T.: -0.016 min
 Response: 1213807
 Conc: 2.64 ng/ml



#15 Picloram

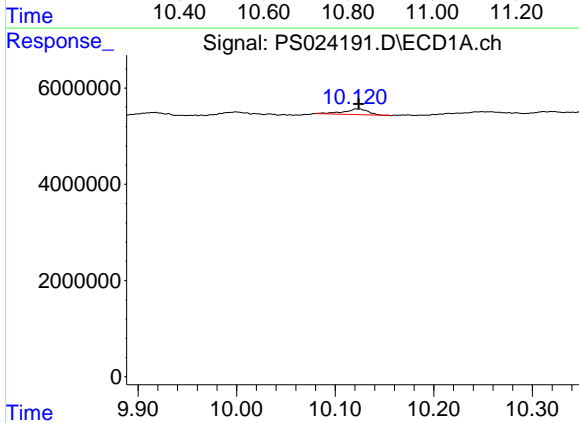
R.T.: 9.687 min
 Delta R.T.: 0.005 min
 Response: 55814182
 Conc: 3.42 ng/ml

Instrument :
 ECD_S
 ClientSampleId :



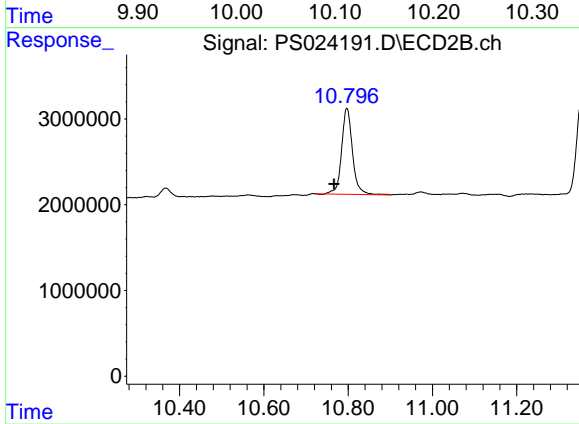
#15 Picloram

R.T.: 10.797 min
 Delta R.T.: 0.001 min
 Response: 18040328
 Conc: 3.04 ng/ml



#16 DCPA

R.T.: 10.123 min
 Delta R.T.: 0.000 min
 Response: 2086191
 Conc: N.D.



#16 DCPA

R.T.: 10.797 min
 Delta R.T.: 0.031 min
 Response: 18040328
 Conc: 3.52 ng/ml