

Data Path : Z:\pestpcbsrv\HPCHEM1\ECD_S\Data\PS122319\
 Data File : PS008145.D
 Signal(s) : Signal #1: ECD1A.ch Signal #2: ECD2B.ch
 Acq On : 23 Dec 2019 17:01
 Operator : SM\AJ
 Sample : K6107-05MSD
 Misc :
 ALS Vial : 9 Sample Multiplier: 1

Instrument :
 ECD_S
 ClientSampleId :
 HR-06-121819MSD

Manual Integrations
 APPROVED

Ankita
 12/24/2019 9:15:33 AM

Integration File signal 1: autoint1.e
 Integration File signal 2: autoint2.e
 Quant Time: Dec 24 01:23:20 2019
 Quant Method : Z:\pestpcbsrv\HPCHEM1\ECD_S\Method\PS121819.M
 Quant Title : 8080.M
 QLast Update : Wed Dec 18 11:09:54 2019
 Response via : Initial Calibration
 Integrator: ChemStation

Volume Inj. : 2 µl
 Signal #1 Phase : Rtx-CLPesticides Signal #2 Phase: Rtx-CLPesticides2
 Signal #1 Info : 30M x 0.32mm x0.5 Signal #2 Info : 30M x 0.32mm x 0.25µm

	Compound	RT#1	RT#2	Resp#1	Resp#2	ng/ml	ng/ml

System Monitoring Compounds							
4) S	2,4-DCAA	5.425	5.154	753.8E6	352.1E6	503.176	479.804
Target Compounds							
1) T	Dalapon	2.004	1.718	847.5E6	348.7E6	452.716	393.683
2) T	3,5-DICHL...	4.800	4.463	1028.8E6	410.2E6	525.201	435.056m
3) T	4-Nitroph...	5.283	4.848	318.6E6	137.1E6	502.510	350.881 #
5) T	DICAMBA	5.572	5.279	2834.1E6	1330.8E6	512.023	481.596
6) T	MCP P	5.720	5.361	192.8E6	95080760	51.629	48.659
7) T	MCPA	5.851	5.535	339.4E6	156.5E6	59.456m	52.420
8) T	DICHLORPROP	6.195	5.807	740.0E6	358.2E6	540.928	522.188
9) T	2,4-D	6.409	6.078	921.1E6	467.4E6	611.317	574.416
10) T	Pentachlo...	6.664	6.438	11965.2E6	5613.0E6	588.122	551.826
11) T	2,4,5-TP ...	7.195	6.800	4572.3E6	2195.4E6	570.409	542.741
12) T	2,4,5-T	7.467	7.160	4943.9E6	2107.8E6	579.345	560.197
13) T	2,4-DB	7.996	7.643	743.2E6	254.0E6	657.726	517.523
14) T	DINOSEB	9.074	7.949	3502.1E6	1493.5E6	618.241	587.938
15) T	Picloram	8.915	8.886	6517.8E6	3057.7E6	550.256	508.055
16) T	DCPA	9.347	8.839	5827.8E6	2591.1E6	576.335	489.381

(f)=RT Delta > 1/2 Window (#)=Amounts differ by > 25% (m)=manual int.

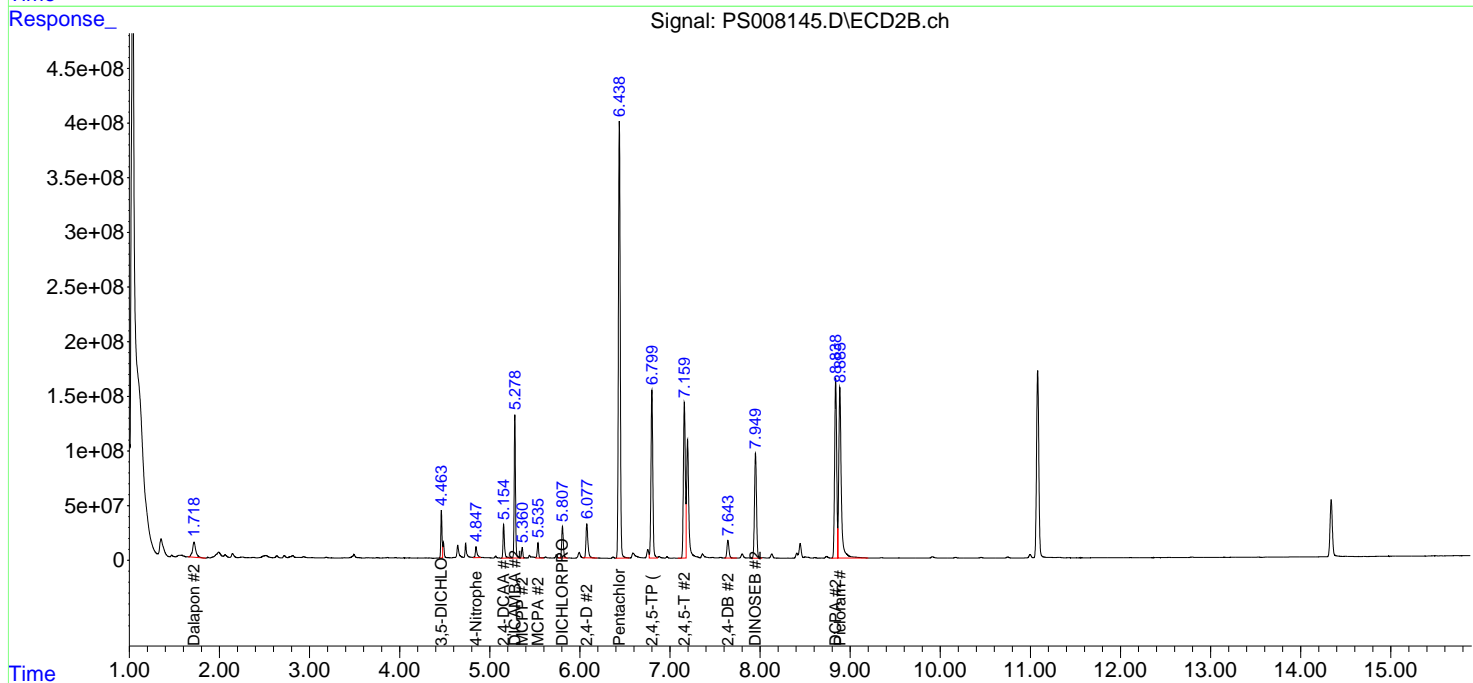
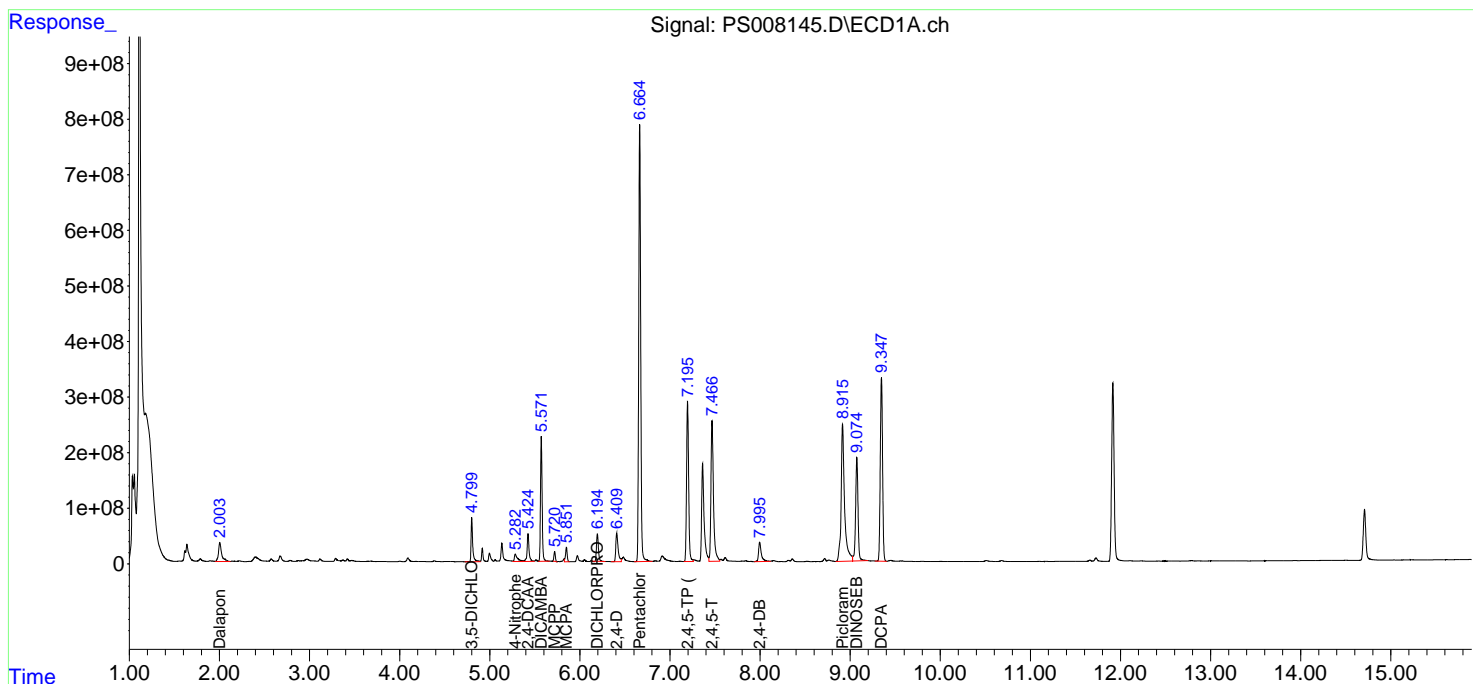
Data Path : Z:\pestpcbsrv\HPCHEM1\ECD_S\Data\PS122319\
 Data File : PS008145.D
 Signal(s) : Signal #1: ECD1A.ch Signal #2: ECD2B.ch
 Acq On : 23 Dec 2019 17:01
 Operator : SM\AJ
 Sample : K6107-05MSD
 Misc :
 ALS Vial : 9 Sample Multiplier: 1

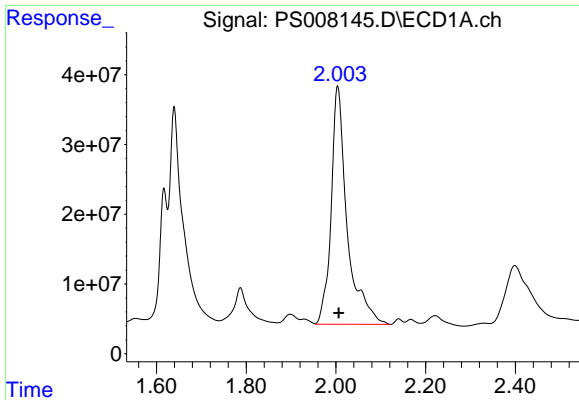
Instrument :
 ECD_S
Client Sampled :
 HR-06-121819MSD

Manual Integrations
APPROVED
 Ankita
 12/24/2019 9:15:33 AM

Integration File signal 1: autoint1.e
 Integration File signal 2: autoint2.e
 Quant Time: Dec 24 01:23:20 2019
 Quant Method : Z:\pestpcbsrv\HPCHEM1\ECD_S\Method\PS121819.M
 Quant Title : 8080.M
 QLast Update : Wed Dec 18 11:09:54 2019
 Response via : Initial Calibration
 Integrator: ChemStation

Volume Inj. : 2 µl
 Signal #1 Phase : Rtx-CLPesticides Signal #2 Phase: Rtx-CLPesticides2
 Signal #1 Info : 30M x 0.32mm x0.5 Signal #2 Info : 30M x 0.32mm x 0.25µm





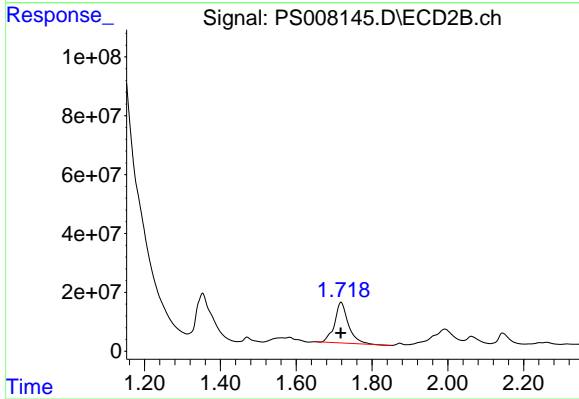
#1 Dalapon

R.T.: 2.004 min
 Delta R.T.: -0.002 min
 Response: 847512840
 Conc: 452.72 ng/ml

Instrument :
 ECD_S
 ClientSampleId :
 HR-06-121819MSD

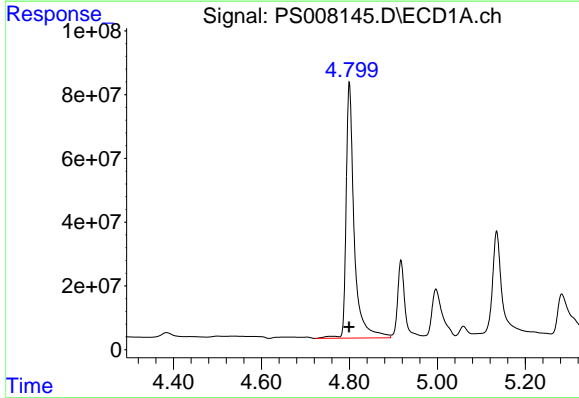
Manual Integrations
 APPROVED

Ankita
 12/24/2019 9:15:33 AM



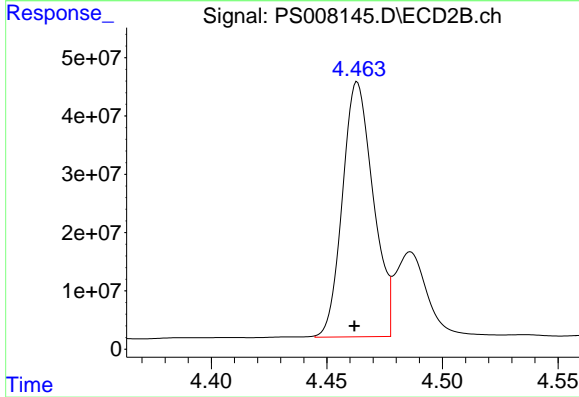
#1 Dalapon

R.T.: 1.718 min
 Delta R.T.: 0.000 min
 Response: 348714627
 Conc: 393.68 ng/ml



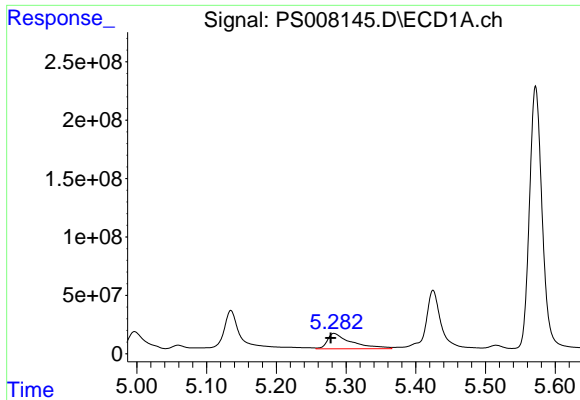
#2 3,5-DICHLOROBENZOIC ACID

R.T.: 4.800 min
 Delta R.T.: 0.000 min
 Response: 1028770610
 Conc: 525.20 ng/ml



#2 3,5-DICHLOROBENZOIC ACID

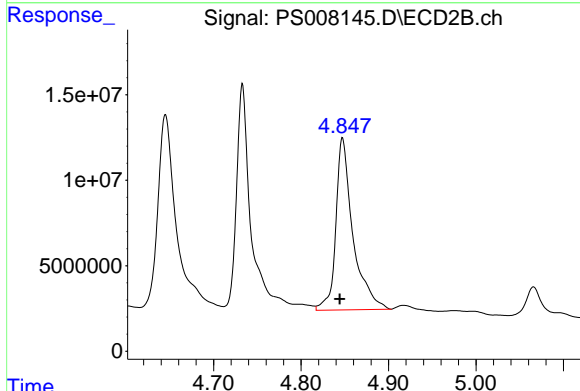
R.T.: 4.463 min
 Delta R.T.: 0.000 min
 Response: 410243003
 Conc: 435.06 ng/ml m



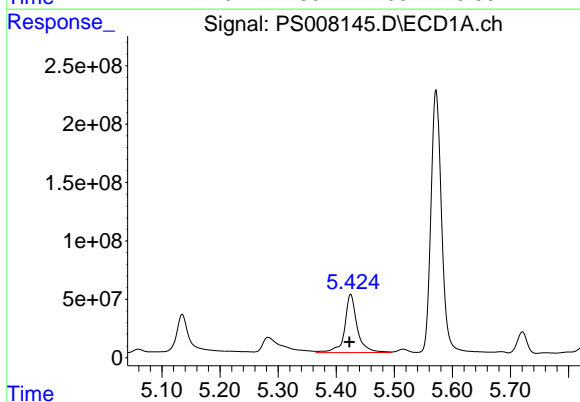
#3 4-Nitrophenol
 R.T.: 5.283 min
 Delta R.T.: 0.005 min
 Response: 318571025
 Conc: 502.51 ng/ml

Instrument :
 ECD_S
ClientSampled :
 HR-06-121819MSD

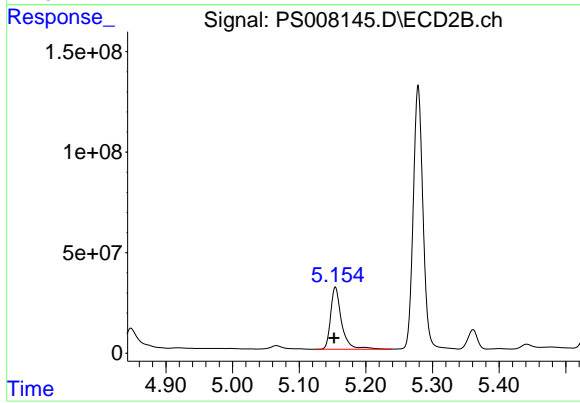
Manual Integrations
APPROVED
 Ankita
 12/24/2019 9:15:33 AM



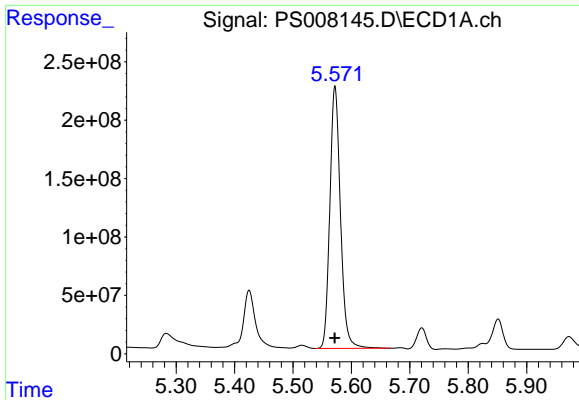
#3 4-Nitrophenol
 R.T.: 4.848 min
 Delta R.T.: 0.004 min
 Response: 137073564
 Conc: 350.88 ng/ml



#4 2,4-DCAA
 R.T.: 5.425 min
 Delta R.T.: 0.002 min
 Response: 753811569
 Conc: 503.18 ng/ml



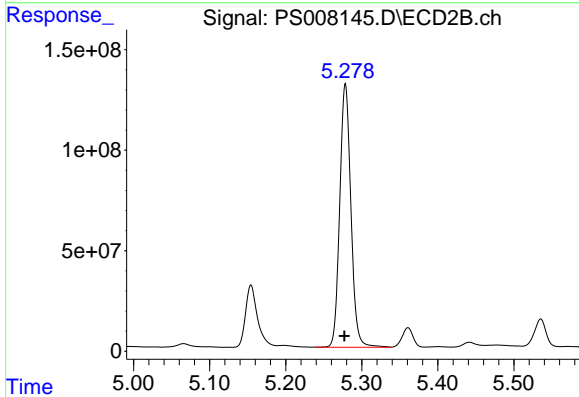
#4 2,4-DCAA
 R.T.: 5.154 min
 Delta R.T.: 0.002 min
 Response: 352144204
 Conc: 479.80 ng/ml



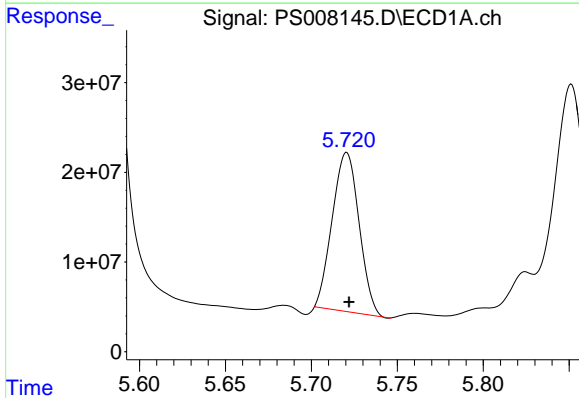
#5 DICAMBA
 R.T.: 5.572 min
 Delta R.T.: 0.000 min
 Response: 2834052477
 Conc: 512.02 ng/ml

Instrument :
 ECD_S
 ClientSampleId :
 HR-06-121819MSD

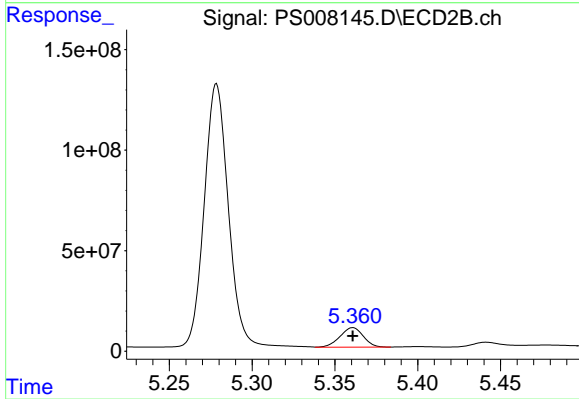
Manual Integrations
 APPROVED
 Ankita
 12/24/2019 9:15:33 AM



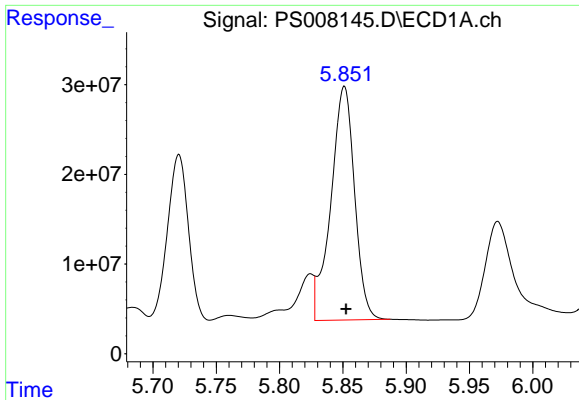
#5 DICAMBA
 R.T.: 5.279 min
 Delta R.T.: 0.002 min
 Response: 1330836252
 Conc: 481.60 ng/ml



#6 MCPP
 R.T.: 5.720 min
 Delta R.T.: -0.002 min
 Response: 192815742
 Conc: 51.63 ug/ml



#6 MCPP
 R.T.: 5.361 min
 Delta R.T.: 0.000 min
 Response: 95080760
 Conc: 48.66 ug/ml



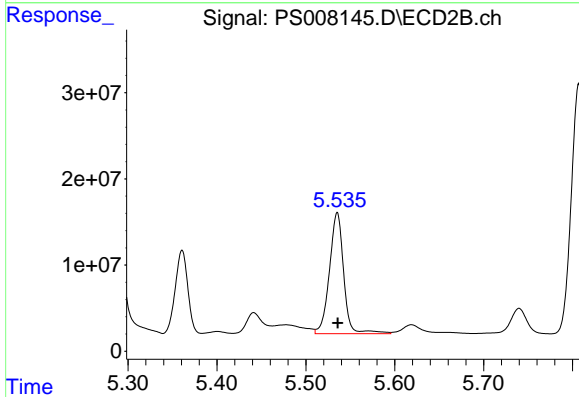
#7 MCPA

R.T.: 5.851 min
 Delta R.T.: -0.002 min
 Response: 339378994
 Conc: 59.46 ug/ml m

Instrument :
 ECD_S
 ClientSampleId :
 HR-06-121819MSD

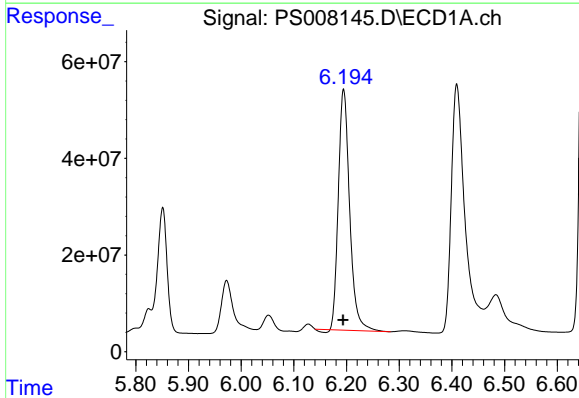
Manual Integrations
 APPROVED

Ankita
 12/24/2019 9:15:33 AM



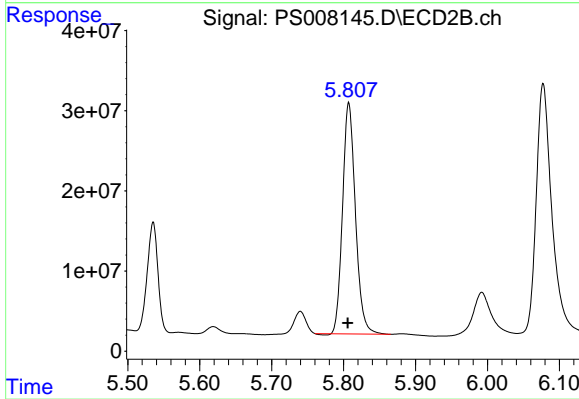
#7 MCPA

R.T.: 5.535 min
 Delta R.T.: 0.000 min
 Response: 156542855
 Conc: 52.42 ug/ml



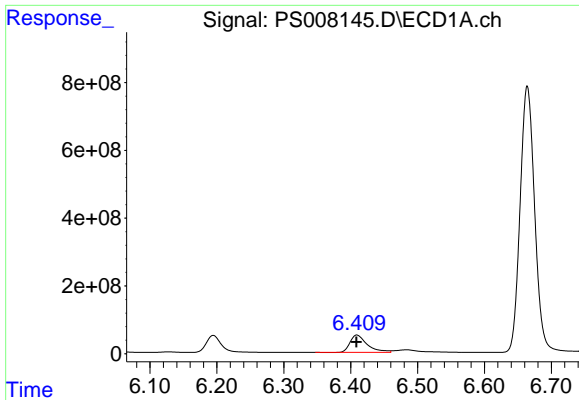
#8 DICHLORPROP

R.T.: 6.195 min
 Delta R.T.: 0.001 min
 Response: 740035735
 Conc: 540.93 ng/ml



#8 DICHLORPROP

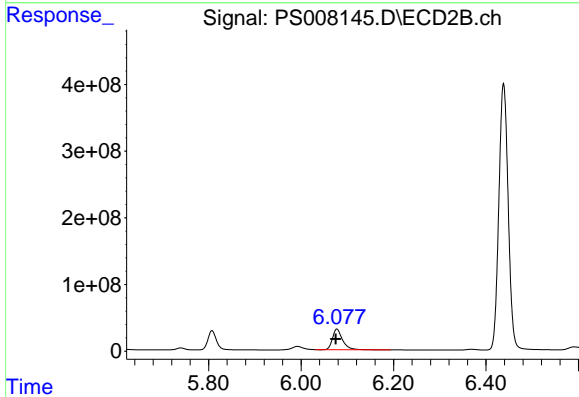
R.T.: 5.807 min
 Delta R.T.: 0.002 min
 Response: 358177861
 Conc: 522.19 ng/ml



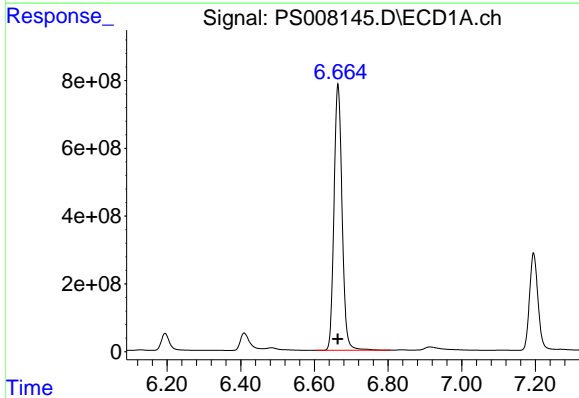
#9 2,4-D
 R.T.: 6.409 min
 Delta R.T.: 0.000 min
 Response: 921061467
 Conc: 611.32 ng/ml

Instrument :
 ECD_S
ClientSampleId :
 HR-06-121819MSD

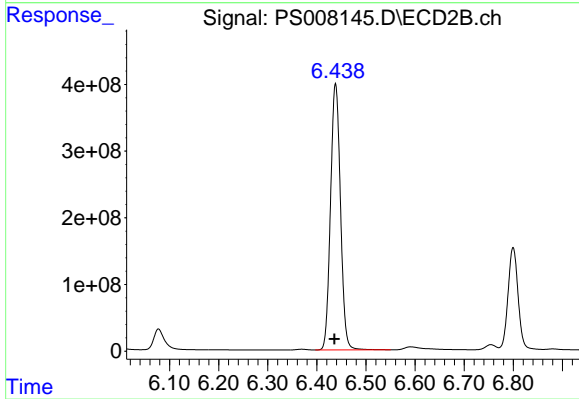
Manual Integrations
APPROVED
 Ankita
 12/24/2019 9:15:33 AM



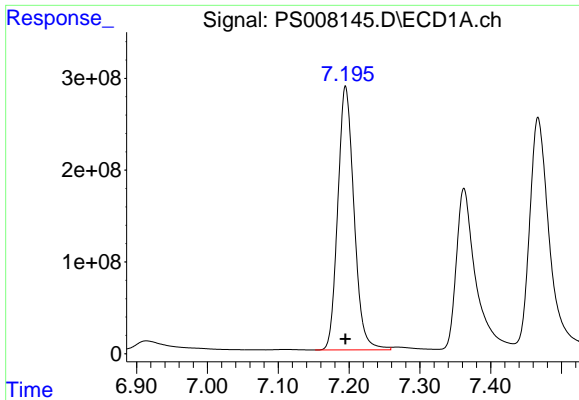
#9 2,4-D
 R.T.: 6.078 min
 Delta R.T.: 0.003 min
 Response: 467357410
 Conc: 574.42 ng/ml



#10 Pentachlorophenol
 R.T.: 6.664 min
 Delta R.T.: 0.000 min
 Response: 11965183467
 Conc: 588.12 ng/ml



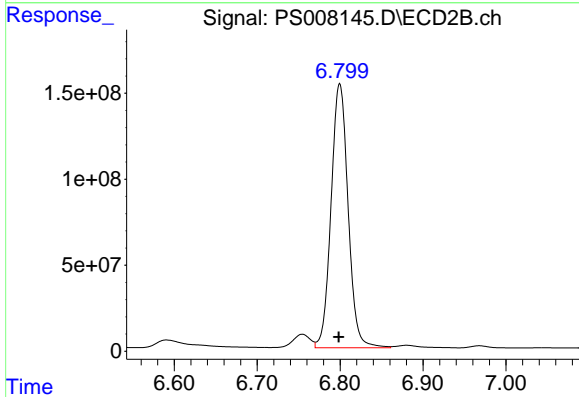
#10 Pentachlorophenol
 R.T.: 6.438 min
 Delta R.T.: 0.002 min
 Response: 5613013266
 Conc: 551.83 ng/ml



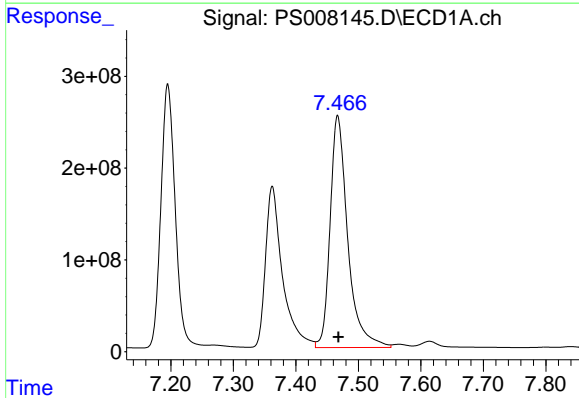
#11 2,4,5-TP (SILVEX)
 R.T.: 7.195 min
 Delta R.T.: 0.000 min
 Response: 4572347123
 Conc: 570.41 ng/ml

Instrument :
 ECD_S
ClientSampled :
 HR-06-121819MSD

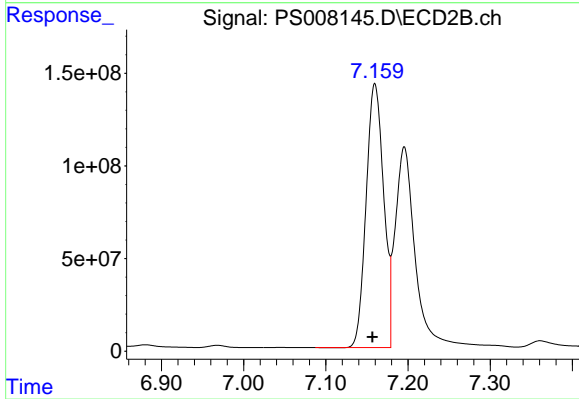
Manual Integrations
APPROVED
 Ankita
 12/24/2019 9:15:33 AM



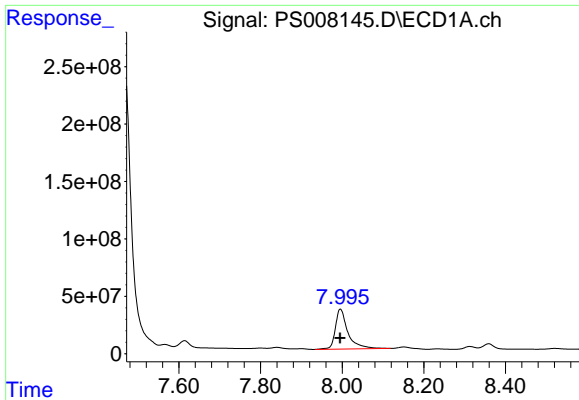
#11 2,4,5-TP (SILVEX)
 R.T.: 6.800 min
 Delta R.T.: 0.001 min
 Response: 2195383209
 Conc: 542.74 ng/ml



#12 2,4,5-T
 R.T.: 7.467 min
 Delta R.T.: 0.000 min
 Response: 4943944877
 Conc: 579.35 ng/ml



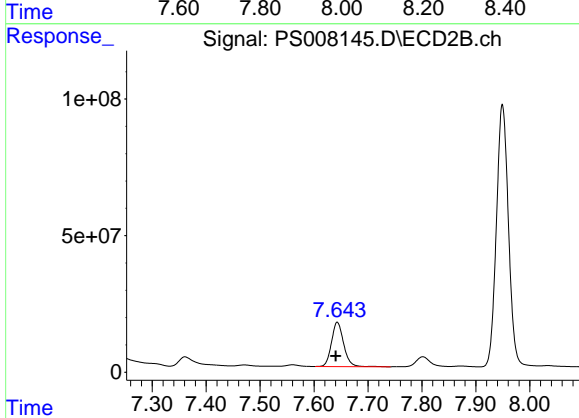
#12 2,4,5-T
 R.T.: 7.160 min
 Delta R.T.: 0.003 min
 Response: 2107786044
 Conc: 560.20 ng/ml



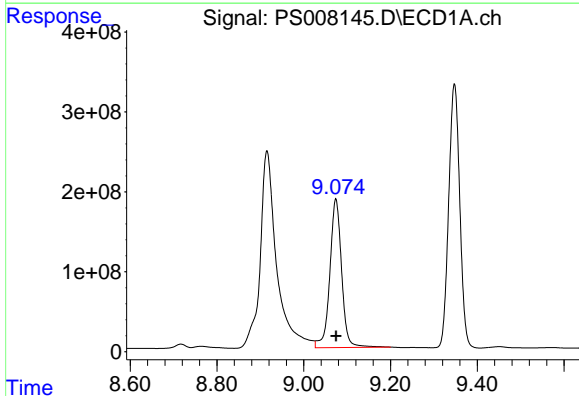
#13 2,4-DB
 R.T.: 7.996 min
 Delta R.T.: 0.000 min
 Response: 743162155
 Conc: 657.73 ng/ml

Instrument :
 ECD_S
ClientSampleId :
 HR-06-121819MSD

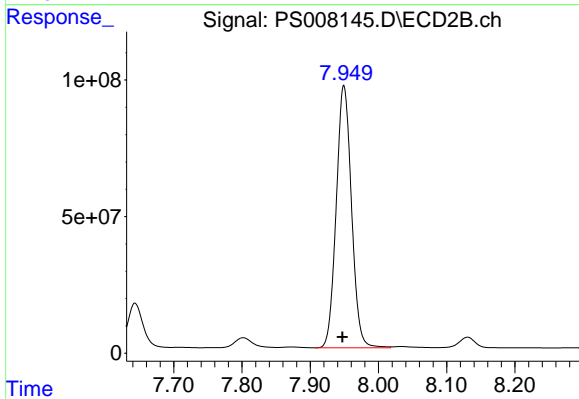
Manual Integrations
APPROVED
 Ankita
 12/24/2019 9:15:33 AM



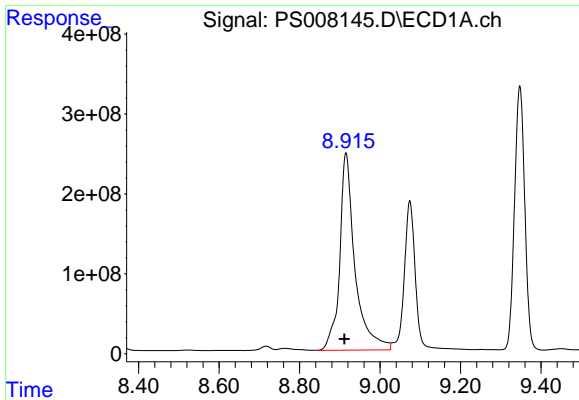
#13 2,4-DB
 R.T.: 7.643 min
 Delta R.T.: 0.003 min
 Response: 253964334
 Conc: 517.52 ng/ml



#14 DINOSEB
 R.T.: 9.074 min
 Delta R.T.: 0.000 min
 Response: 3502076761
 Conc: 618.24 ng/ml



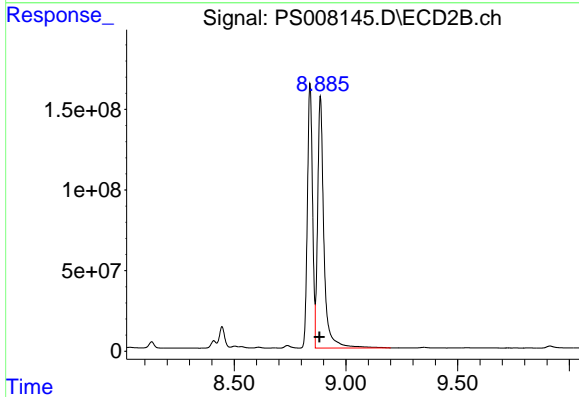
#14 DINOSEB
 R.T.: 7.949 min
 Delta R.T.: 0.002 min
 Response: 1493509867
 Conc: 587.94 ng/ml



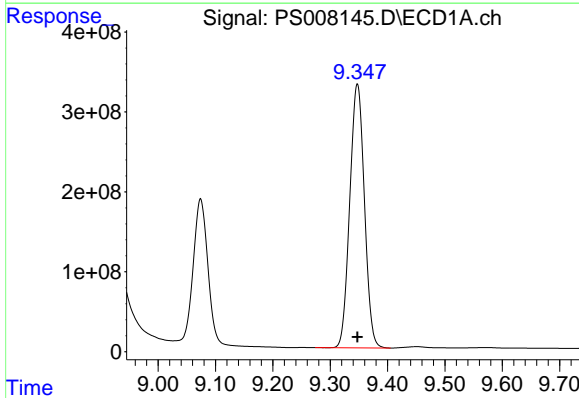
#15 Picloram
 R.T.: 8.915 min
 Delta R.T.: 0.004 min
 Response: 6517754434
 Conc: 550.26 ng/ml

Instrument :
 ECD_S
ClientSampled :
 HR-06-121819MSD

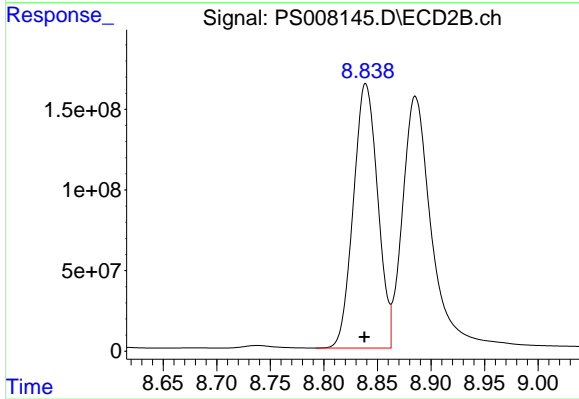
Manual Integrations
APPROVED
 Ankita
 12/24/2019 9:15:33 AM



#15 Picloram
 R.T.: 8.886 min
 Delta R.T.: 0.004 min
 Response: 3057715511
 Conc: 508.05 ng/ml



#16 DCPA
 R.T.: 9.347 min
 Delta R.T.: 0.000 min
 Response: 5827750656
 Conc: 576.34 ng/ml



#16 DCPA
 R.T.: 8.839 min
 Delta R.T.: 0.001 min
 Response: 2591137112
 Conc: 489.38 ng/ml