

Data Path : Z:\pestpcbsrv\HPCHEM1\FID_F\Data\FF020125AL\
 Data File : FF015405.D
 Signal(s) : FID2B.ch
 Acq On : 31 Jan 2025 07:43
 Operator : YP\AJ
 Sample : MECL2
 Misc :
 ALS Vial : 51 Sample Multiplier: 1

Instrument :
 FID_F
 ClientSampleId :

Integration File: autoint1.e
 Quant Time: Jan 31 23:18:16 2025
 Quant Method : Z:\pestpcbsrv\HPCHEM1\FID_F\Method\Aliphatic EPH 011425.M
 Quant Title : GC Extractables
 QLast Update : Tue Jan 14 15:33:37 2025
 Response via : Initial Calibration
 Integrator: ChemStation

Volume Inj. : 1 ul
 Signal Phase : Rxi-1ms
 Signal Info : 20M x 0.18mm x 0.18um

Compound	R.T.	Response	Conc Units

System Monitoring Compounds			
Target Compounds			

(f)=RT Delta > 1/2 Window

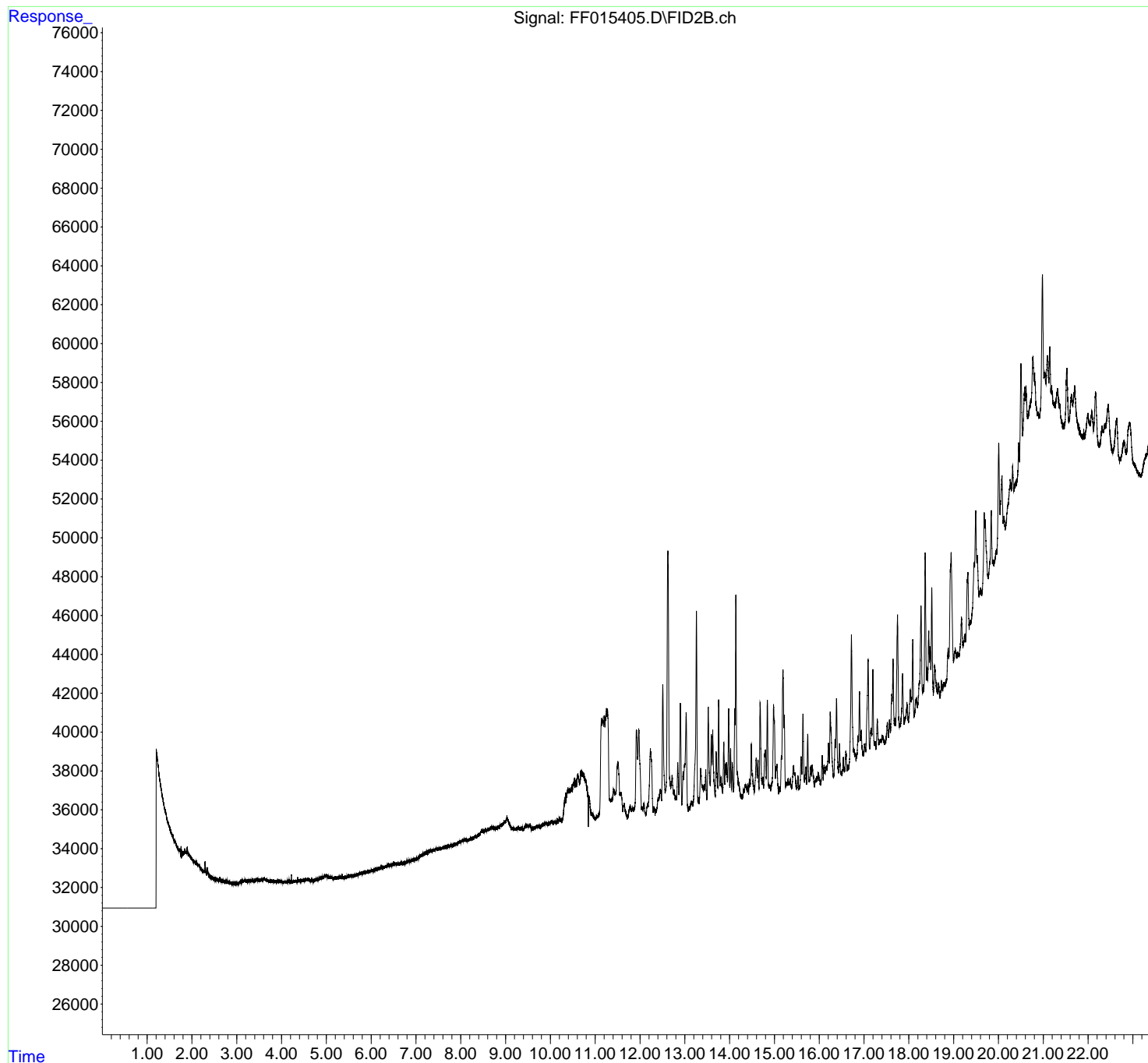
(m)=manual int.

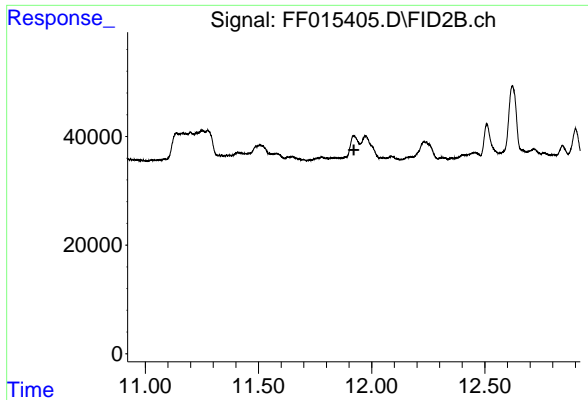
Data Path : Z:\pestpcbsrv\HPCHEM1\FID_F\Data\FF020125AL\
Data File : FF015405.D
Signal(s) : FID2B.ch
Acq On : 31 Jan 2025 07:43
Operator : YP\AJ
Sample : MECL2
Misc :
ALS Vial : 51 Sample Multiplier: 1

Instrument :
FID_F
ClientSampleId :

Integration File: autoint1.e
Quant Time: Jan 31 23:18:16 2025
Quant Method : Z:\pestpcbsrv\HPCHEM1\FID_F\Method\Aliphatic EPH 011425.M
Quant Title : GC Extractables
QLast Update : Tue Jan 14 15:33:37 2025
Response via : Initial Calibration
Integrator: ChemStation

Volume Inj. : 1 ul
Signal Phase : Rxi-1ms
Signal Info : 20M x 0.18mm x 0.18um

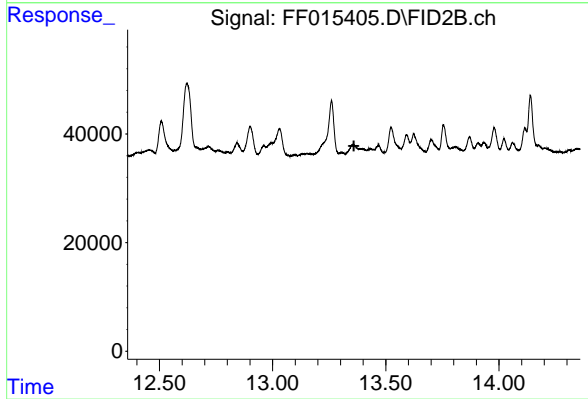




#9 ortho-Terphenyl (SURR)

R.T.: 0.000 min
Exp R.T. : 11.922 min
Response: 0
Conc: N.D.

Instrument :
FID_F
ClientSampleId :



#12 1-chlorooctadecane (SURR)

R.T.: 0.000 min
Exp R.T. : 13.359 min
Response: 0
Conc: N.D.