

Data Path : Z:\pestpcbsrv\HPCHEM1\FID_F\Data\FF021324AL\
 Data File : FF014025.D
 Signal(s) : FID2B.ch
 Acq On : 13 Feb 2024 15:29
 Operator : YP\AJ
 Sample : P1187-08
 Misc : 5 PPM WATER LOQ
 ALS Vial : 64 Sample Multiplier: 1

Integration File: autoint1.e
 Quant Time: Feb 13 22:57:38 2024
 Quant Method : Z:\pestpcbsrv\HPCHEM1\FID_F\Method\Aliphatic EPH 021224.M
 Quant Title : GC Extractables
 QLast Update : Mon Feb 12 16:35:47 2024
 Response via : Initial Calibration
 Integrator: ChemStation

Volume Inj. : 1 ul
 Signal Phase : Rxi-1ms
 Signal Info : 20M x 0.18mm x 0.18um

Compound	R.T.	Response	Conc Units

System Monitoring Compounds			
12) S 1-chlorooctadecane (S... Spiked Amount 50.000	13.299	5856467 Recovery =	54.269 ug/ml 108.54%
Target Compounds			
1) T n-Nonane (C9)	3.252	577203	4.661 ug/ml
2) T n-Decane (C10)	4.497	722941	5.720 ug/ml
4) T n-Dodecane (C12)	6.660	817081	6.386 ug/ml
6) T n-Tetradecane (C14)	8.486	814325	6.428 ug/mlm
7) T n-Hexadecane (C16)	10.095	845926	6.396 ug/ml
8) T n-Octadecane (C18)	11.539	927942	6.816 ug/ml
10) T n-Eicosane (C20)	12.850	1011402	7.641 ug/ml
11) T n-Heneicosane (C21)	13.463	969152	7.417 ug/ml
13) T n-Docosane (C22)	14.050	986556	7.607 ug/ml
14) T n-Tetracosane (C24)	15.155	1044683	8.136 ug/ml
15) T n-Hexacosane (C26)	16.178	950661	7.646 ug/ml
16) T n-Octacosane (C28)	17.129	971318	8.158 ug/ml
17) T n-Tricontane (C30)	18.017	1026664	8.735 ug/ml
18) T n-Dotriacontane (C32)	18.853	1069406	9.446 ug/ml
19) T n-Tetratriacontane (C34)	19.637	953680	8.894 ug/ml
20) T n-Hexatriacontane (C36)	20.377	871348	8.658 ug/mlm
21) T n-Octatriacontane (C38)	21.107	822088	7.901 ug/mlm
22) T n-Tetracontane (C40)	21.993	851420	8.460 ug/ml

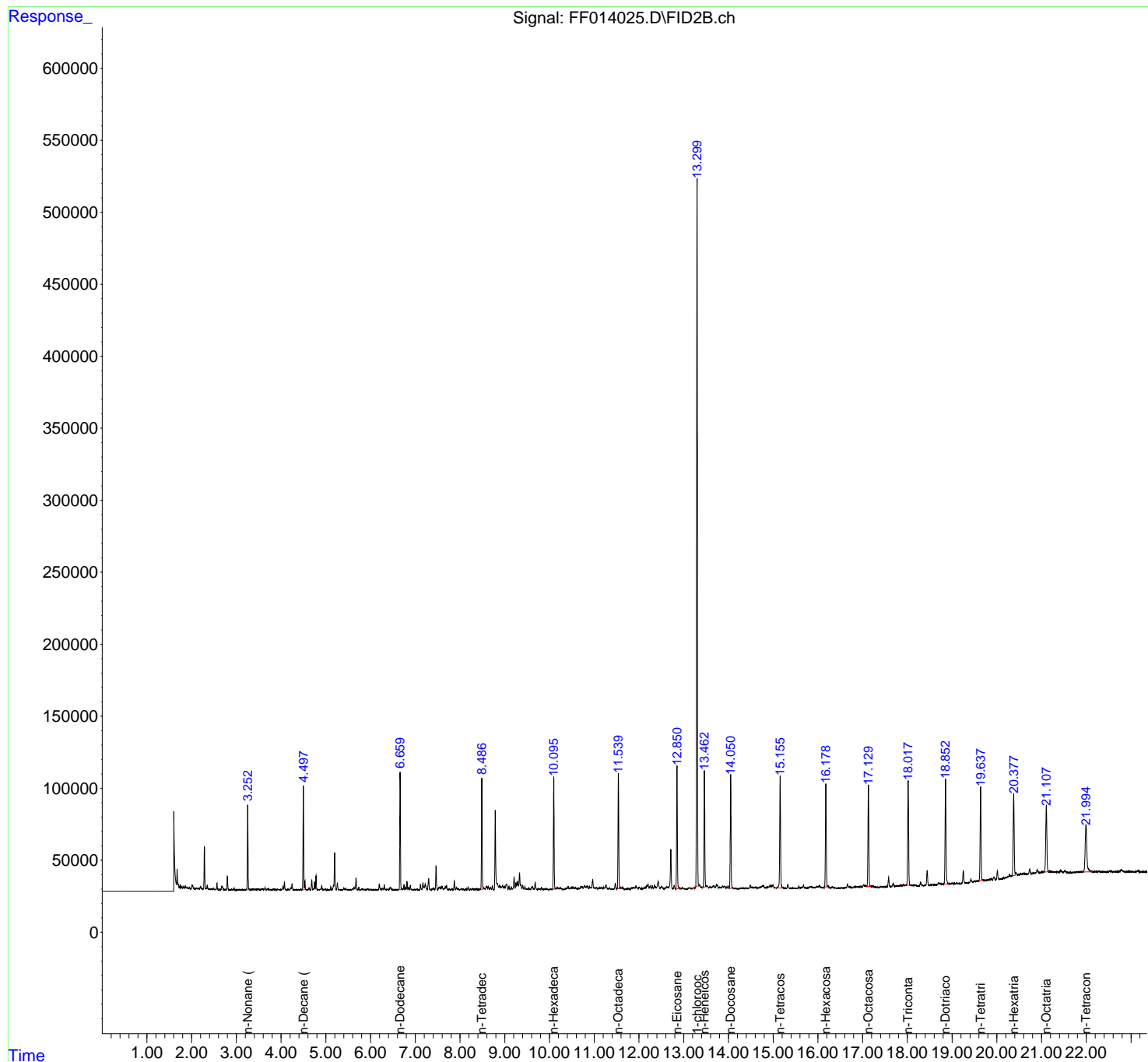
(f)=RT Delta > 1/2 Window

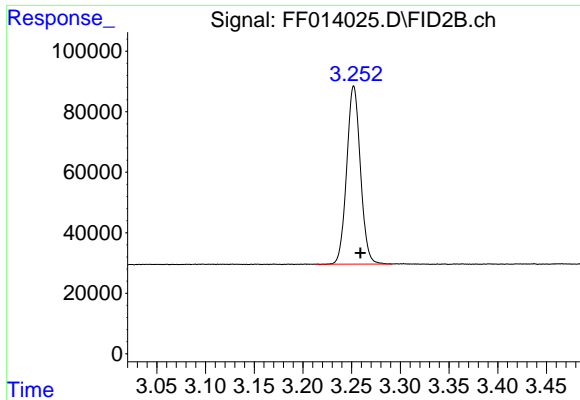
(m)=manual int.

Data Path : Z:\pestpcbsrv\HPCHEM1\FID_F\Data\FF021324AL\
 Data File : FF014025.D
 Signal(s) : FID2B.ch
 Acq On : 13 Feb 2024 15:29
 Operator : YP\AJ
 Sample : P1187-08
 Misc : 5 PPM WATER LOQ
 ALS Vial : 64 Sample Multiplier: 1

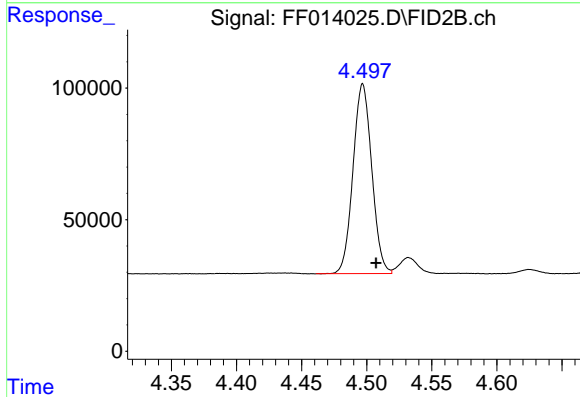
Integration File: autoint1.e
 Quant Time: Feb 13 22:57:38 2024
 Quant Method : Z:\pestpcbsrv\HPCHEM1\FID_F\Method\Aliphatic EPH 021224.M
 Quant Title : GC Extractables
 QLast Update : Mon Feb 12 16:35:47 2024
 Response via : Initial Calibration
 Integrator: ChemStation

Volume Inj. : 1 ul
 Signal Phase : Rxi-1ms
 Signal Info : 20M x 0.18mm x 0.18um

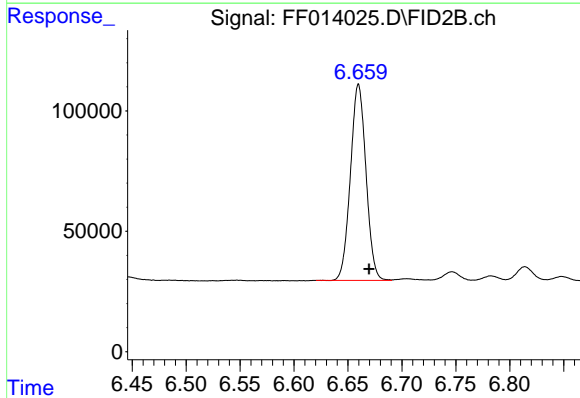




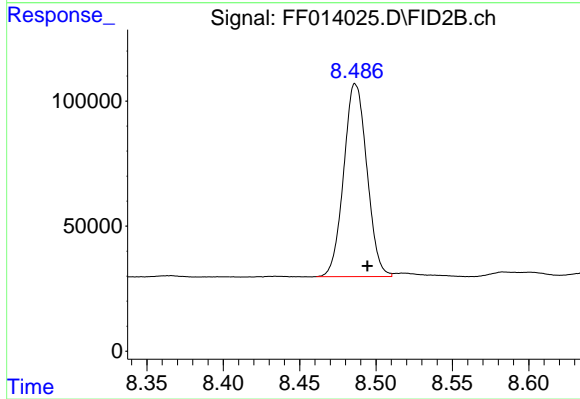
#1 n-Nonane (C9)
R.T.: 3.252 min
Delta R.T.: -0.007 min
Response: 577203
Conc: 4.66 ug/ml



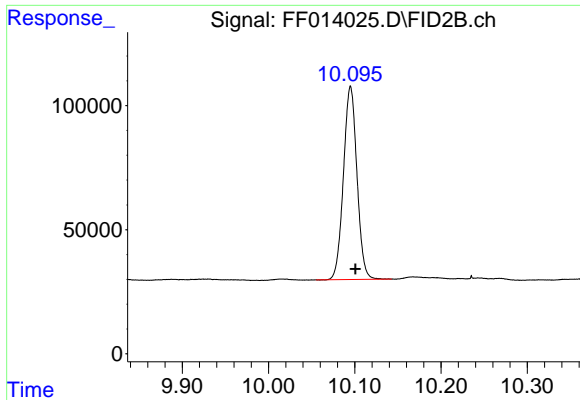
#2 n-Decane (C10)
R.T.: 4.497 min
Delta R.T.: -0.010 min
Response: 722941
Conc: 5.72 ug/ml



#4 n-Dodecane (C12)
R.T.: 6.660 min
Delta R.T.: -0.010 min
Response: 817081
Conc: 6.39 ug/ml

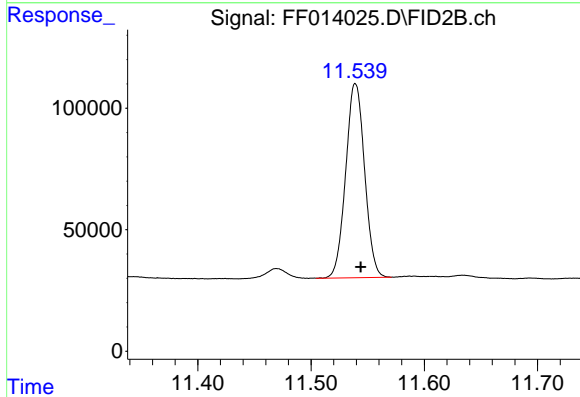


#6 n-Tetradecane (C14)
R.T.: 8.486 min
Delta R.T.: -0.009 min
Response: 814325
Conc: 6.43 ug/ml m



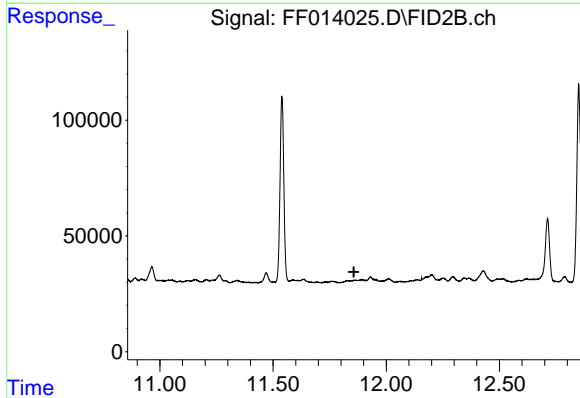
#7 n-Hexadecane (C16)

R.T.: 10.095 min
 Delta R.T.: -0.006 min
 Response: 845926
 Conc: 6.40 ug/ml



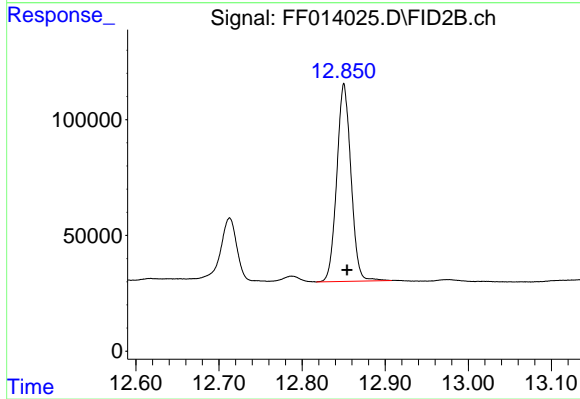
#8 n-Octadecane (C18)

R.T.: 11.539 min
 Delta R.T.: -0.005 min
 Response: 927942
 Conc: 6.82 ug/ml



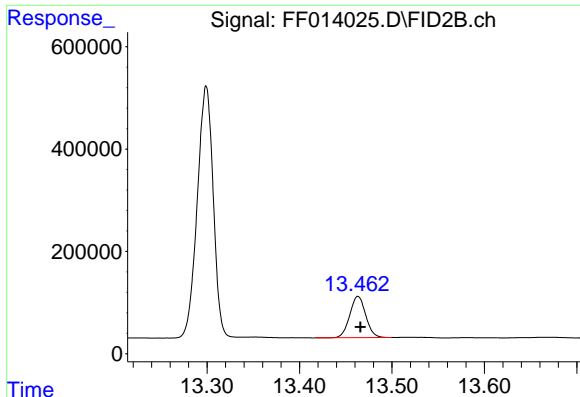
#9 ortho-Terphenyl (SURR)

R.T.: 0.000 min
 Exp R.T. : 11.857 min
 Response: 0
 Conc: N.D.



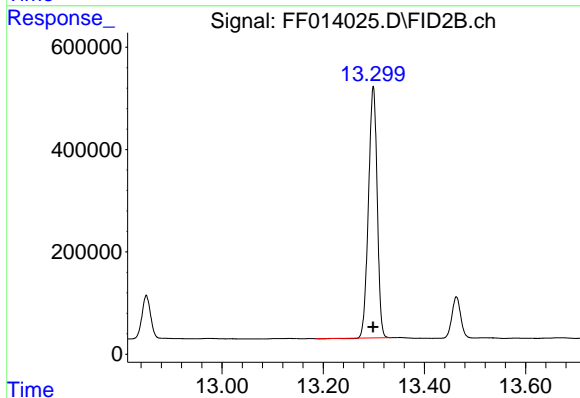
#10 n-Eicosane (C20)

R.T.: 12.850 min
 Delta R.T.: -0.004 min
 Response: 1011402
 Conc: 7.64 ug/ml



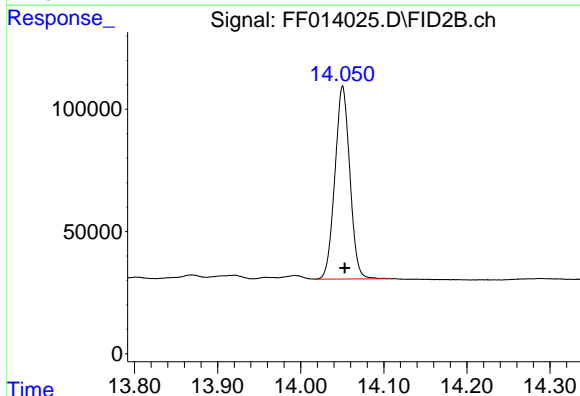
#11 n-Heneicosane (C21)

R.T.: 13.463 min
Delta R.T.: -0.002 min
Response: 969152
Conc: 7.42 ug/ml



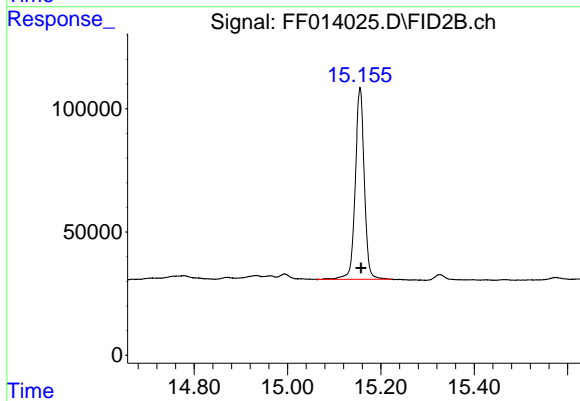
#12 1-chlorooctadecane (SURR)

R.T.: 13.299 min
Delta R.T.: 0.000 min
Response: 5856467
Conc: 54.27 ug/ml



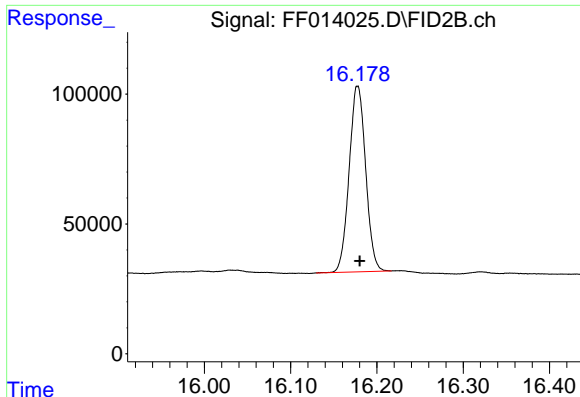
#13 n-Docosane (C22)

R.T.: 14.050 min
Delta R.T.: -0.003 min
Response: 986556
Conc: 7.61 ug/ml



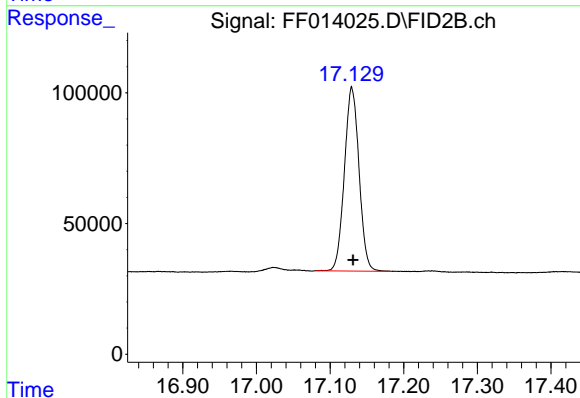
#14 n-Tetracosane (C24)

R.T.: 15.155 min
Delta R.T.: -0.002 min
Response: 1044683
Conc: 8.14 ug/ml



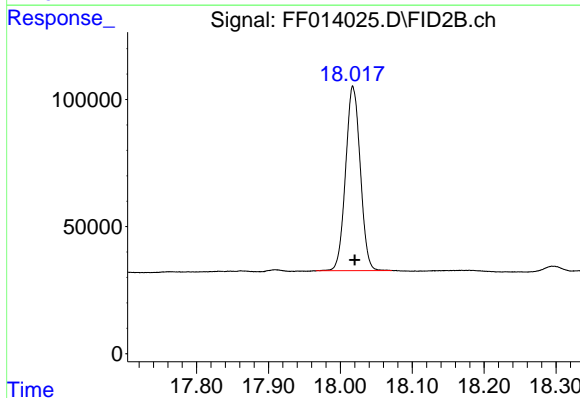
#15 n-Hexacosane (C26)

R.T.: 16.178 min
Delta R.T.: -0.003 min
Response: 950661
Conc: 7.65 ug/ml



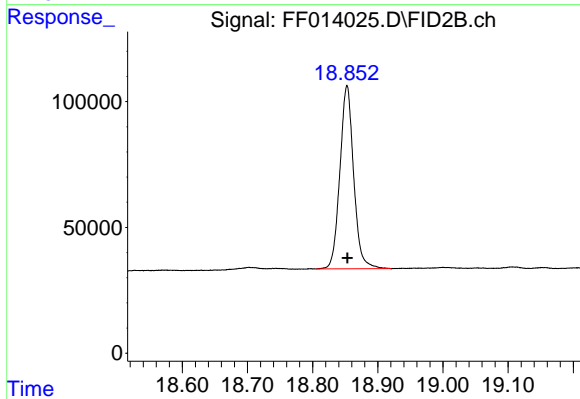
#16 n-Octacosane (C28)

R.T.: 17.129 min
Delta R.T.: -0.002 min
Response: 971318
Conc: 8.16 ug/ml



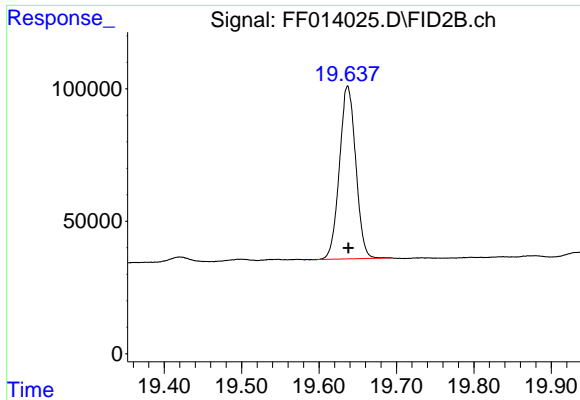
#17 n-Tricontane (C30)

R.T.: 18.017 min
Delta R.T.: -0.003 min
Response: 1026664
Conc: 8.74 ug/ml



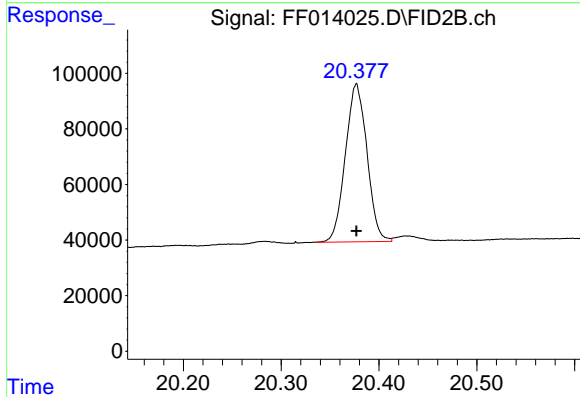
#18 n-Dotriacontane (C32)

R.T.: 18.853 min
Delta R.T.: 0.000 min
Response: 1069406
Conc: 9.45 ug/ml



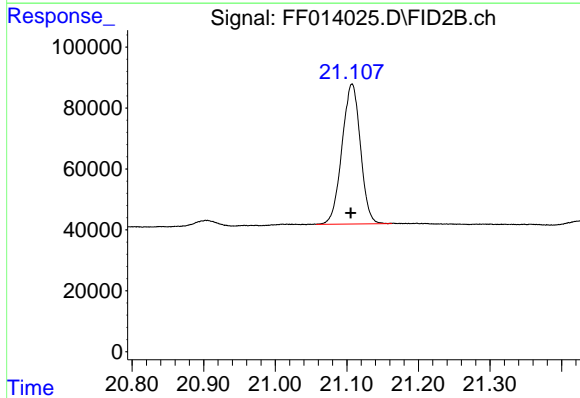
#19 n-Tetratriacontane (C34)

R.T.: 19.637 min
Delta R.T.: 0.000 min
Response: 953680
Conc: 8.89 ug/ml



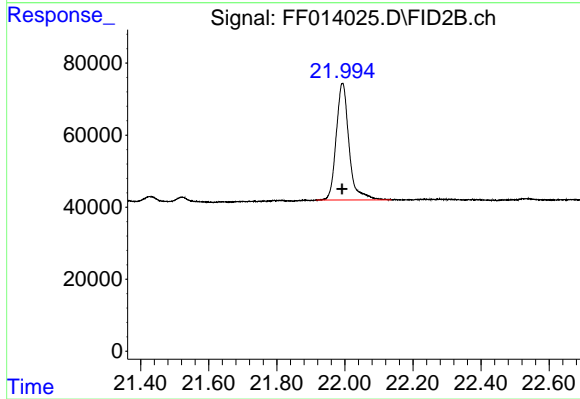
#20 n-Hexatriacontane (C36)

R.T.: 20.377 min
Delta R.T.: 0.000 min
Response: 871348
Conc: 8.66 ug/ml m



#21 n-Octatriacontane (C38)

R.T.: 21.107 min
Delta R.T.: 0.002 min
Response: 822088
Conc: 7.90 ug/ml m



#22 n-Tetracontane (C40)

R.T.: 21.993 min
Delta R.T.: 0.001 min
Response: 851420
Conc: 8.46 ug/ml