

Data Path : Z:\pestpcbsrv\HPCHEM1\FID_F\Data\FF030320\
 Data File : FF006490.D
 Signal(s) : FID2B.ch
 Acq On : 03 Mar 2020 16:18
 Operator : DD\AJ
 Sample : PB127237BS
 Misc :
 ALS Vial : 59 Sample Multiplier: 1

Integration File: autoint1.e
 Quant Time: Mar 04 00:43:19 2020
 Quant Method : Z:\pestpcbsrv\HPCHEM1\FID_F\Method\FF021020.M
 Quant Title :
 QLast Update : Tue Feb 11 10:27:03 2020
 Response via : Initial Calibration
 Integrator: ChemStation

Volume Inj. : 1uL
 Signal Phase : Rxi-1ms
 Signal Info : 20mx0.18mmx0.18um

Compound	R.T.	Response	Conc Units

System Monitoring Compounds			
9) S TETRACOSANE-d50 (SURR...	14.593	2566503	21.066 ug/ml
Target Compounds			
1) N-OCTANE	2.279	2746973	20.715 ug/ml
2) N-DECANE	4.364	3040994	22.771 ug/ml
3) N-DODECANE	6.378	3077876	22.520 ug/ml
4) N-TETRADECANE	8.167	3051967	22.188 ug/ml
5) N-HEXADECANE	9.762	2963846	21.125 ug/ml
6) N-OCTADECANE	11.199	3024698	21.505 ug/ml
7) N-EICOSANE	12.504	2906552	20.624 ug/ml
8) N-DOCOSANE	13.697	2867866	20.406 ug/ml
10) N-TETRACOSANE	14.796	2852419	20.413 ug/ml
11) N-HEXACOSANE	15.812	2721872	19.716 ug/ml
12) N-OCTACOSANE	16.759	2686563	19.467 ug/ml
13) N-TRIACONTANE	17.640	2683788	19.407 ug/ml
14) N-DOTRIACONTANE	18.470	2569412	19.530 ug/ml
15) N-TETRATRIACONTANE	19.249	2231077	19.866 ug/ml
16) N-HEXATRIACONTANE	19.987	2163139	22.351 ug/ml
17) N-OCTATRIACONTANE	20.704	1599615	22.653 ug/ml
18) N-TETRACONTANE	21.574	1838113	26.040 ug/ml

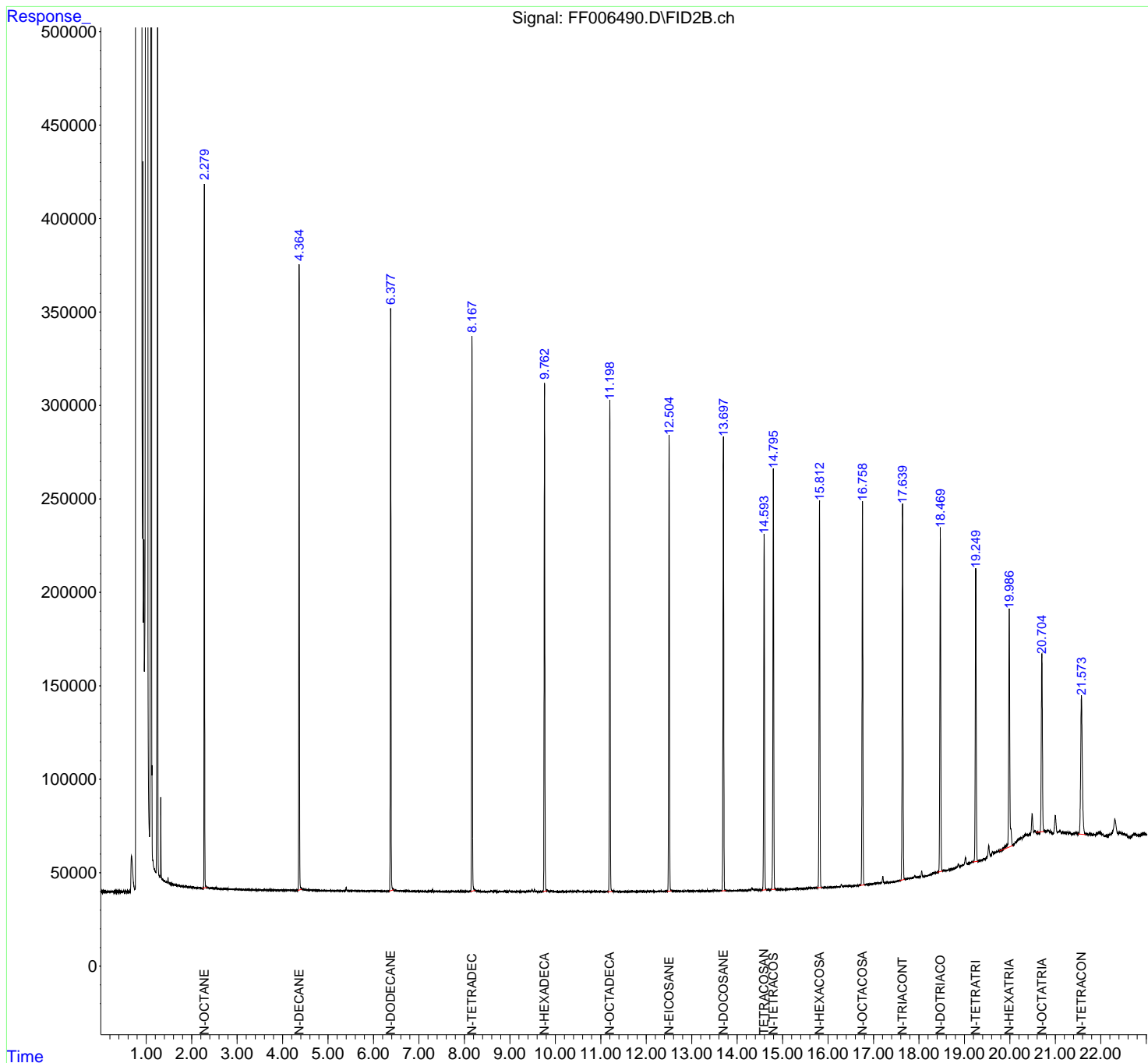
(f)=RT Delta > 1/2 Window

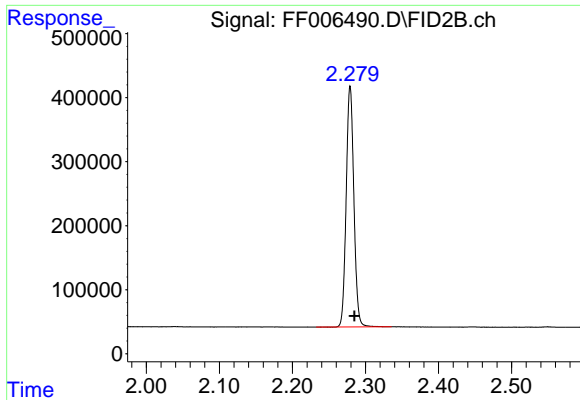
(m)=manual int.

Data Path : Z:\pestpcbsrv\HPCHEM1\FID_F\Data\FF030320\
 Data File : FF006490.D
 Signal(s) : FID2B.ch
 Acq On : 03 Mar 2020 16:18
 Operator : DD\AJ
 Sample : PB127237BS
 Misc :
 ALS Vial : 59 Sample Multiplier: 1

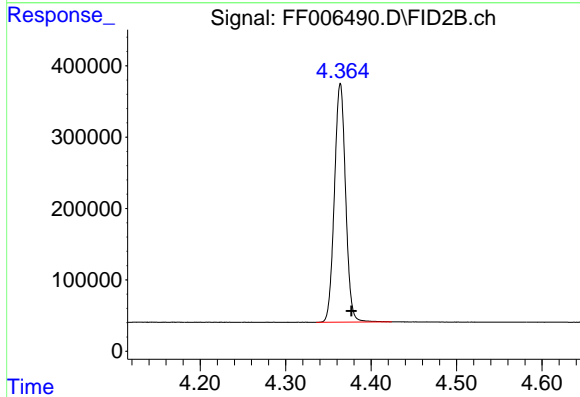
Integration File: autoint1.e
 Quant Time: Mar 04 00:43:19 2020
 Quant Method : Z:\pestpcbsrv\HPCHEM1\FID_F\Method\FF021020.M
 Quant Title :
 QLast Update : Tue Feb 11 10:27:03 2020
 Response via : Initial Calibration
 Integrator: ChemStation

Volume Inj. : 1uL
 Signal Phase : Rxi-1ms
 Signal Info : 20mx0.18mmx0.18um

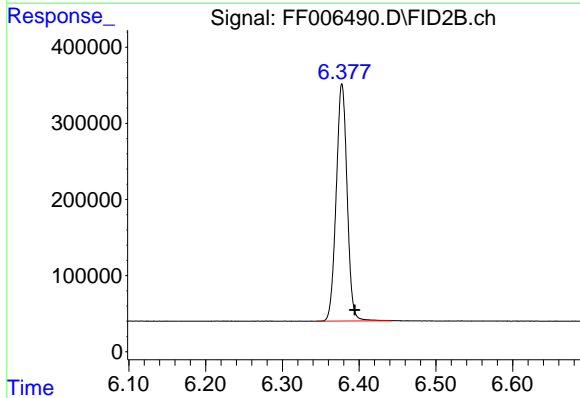




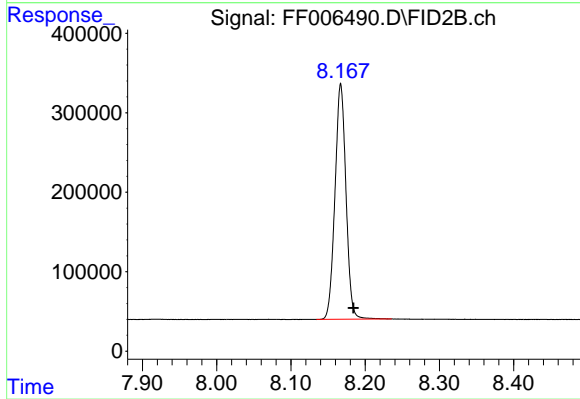
#1 N-OCTANE
R.T.: 2.279 min
Delta R.T.: -0.006 min
Response: 2746973
Conc: 20.71 ug/ml



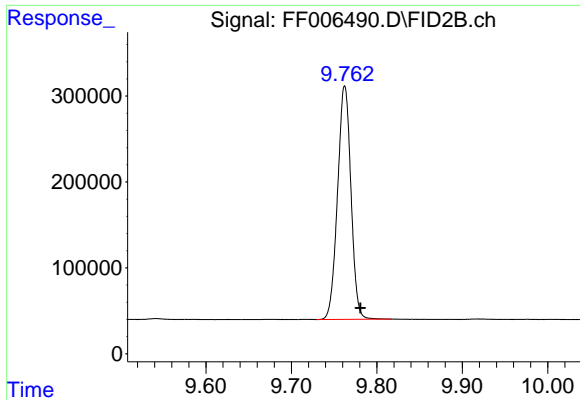
#2 N-DECANE
R.T.: 4.364 min
Delta R.T.: -0.013 min
Response: 3040994
Conc: 22.77 ug/ml



#3 N-DODECANE
R.T.: 6.378 min
Delta R.T.: -0.017 min
Response: 3077876
Conc: 22.52 ug/ml

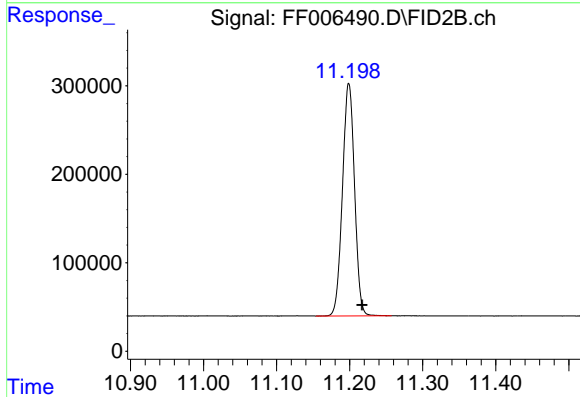


#4 N-TETRADECANE
R.T.: 8.167 min
Delta R.T.: -0.017 min
Response: 3051967
Conc: 22.19 ug/ml



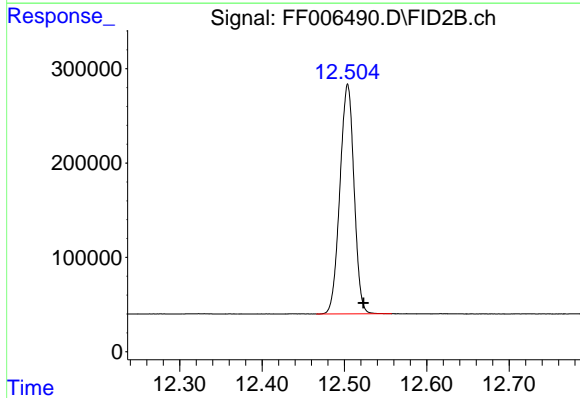
#5 N-HEXADECANE

R.T.: 9.762 min
Delta R.T.: -0.018 min
Response: 2963846
Conc: 21.12 ug/ml



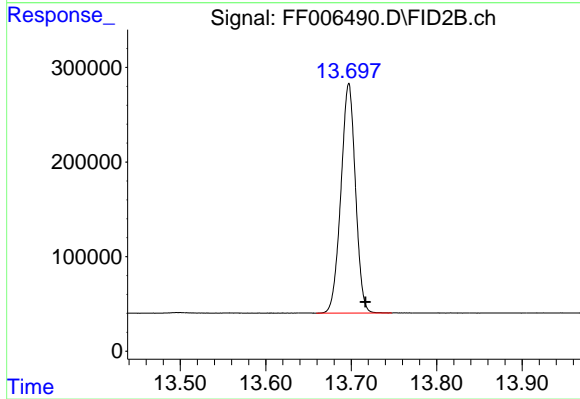
#6 N-OCTADECANE

R.T.: 11.199 min
Delta R.T.: -0.018 min
Response: 3024698
Conc: 21.50 ug/ml



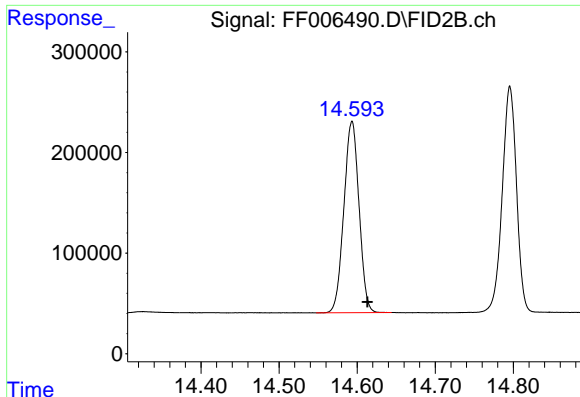
#7 N-EICOSANE

R.T.: 12.504 min
Delta R.T.: -0.019 min
Response: 2906552
Conc: 20.62 ug/ml



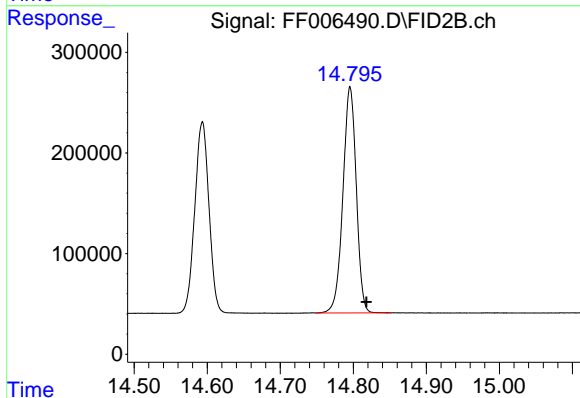
#8 N-DOCOSANE

R.T.: 13.697 min
Delta R.T.: -0.020 min
Response: 2867866
Conc: 20.41 ug/ml



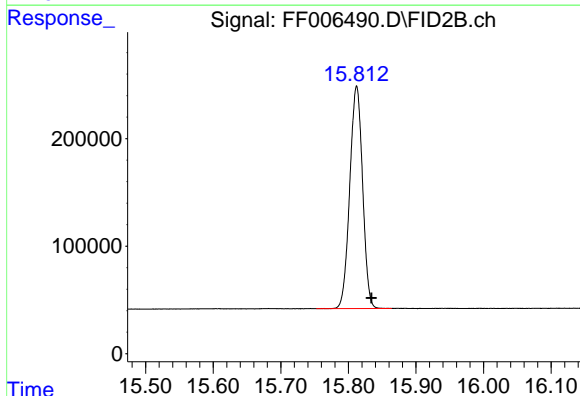
#9 TETRACOSANE-d50 (SURROGATE)

R.T.: 14.593 min
Delta R.T.: -0.020 min
Response: 2566503
Conc: 21.07 ug/ml



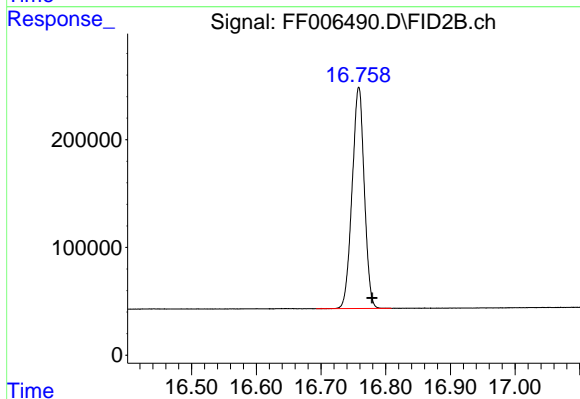
#10 N-TETRACOSANE

R.T.: 14.796 min
Delta R.T.: -0.023 min
Response: 2852419
Conc: 20.41 ug/ml



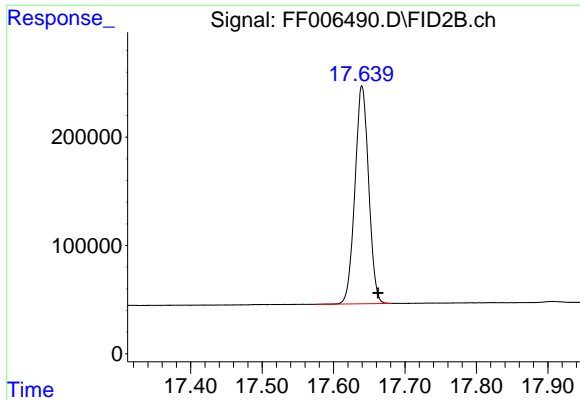
#11 N-HEXACOSANE

R.T.: 15.812 min
Delta R.T.: -0.022 min
Response: 2721872
Conc: 19.72 ug/ml



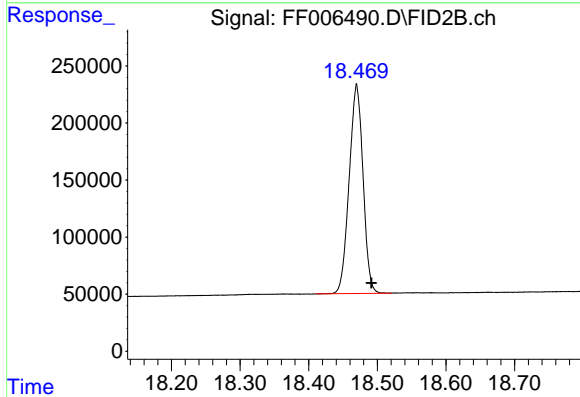
#12 N-OCTACOSANE

R.T.: 16.759 min
Delta R.T.: -0.020 min
Response: 2686563
Conc: 19.47 ug/ml



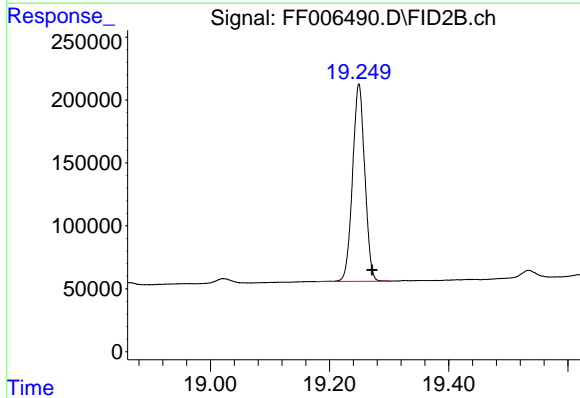
#13 N-TRIACONTANE

R.T.: 17.640 min
Delta R.T.: -0.022 min
Response: 2683788
Conc: 19.41 ug/ml



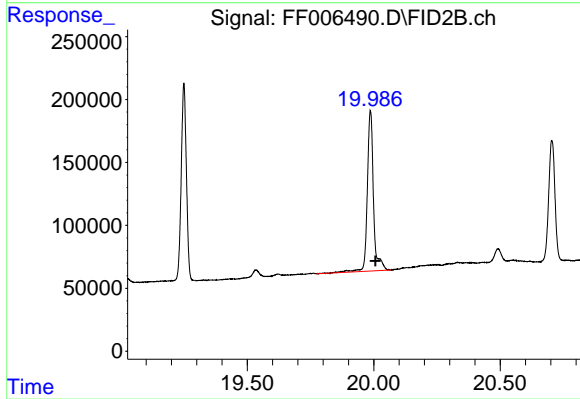
#14 N-DOTRIACONTANE

R.T.: 18.470 min
Delta R.T.: -0.022 min
Response: 2569412
Conc: 19.53 ug/ml



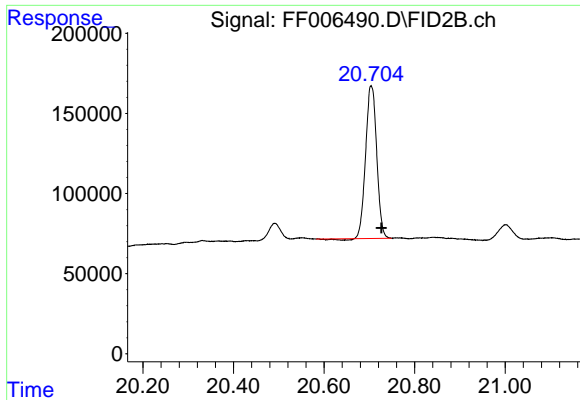
#15 N-TETRATRIACONTANE

R.T.: 19.249 min
Delta R.T.: -0.022 min
Response: 2231077
Conc: 19.87 ug/ml

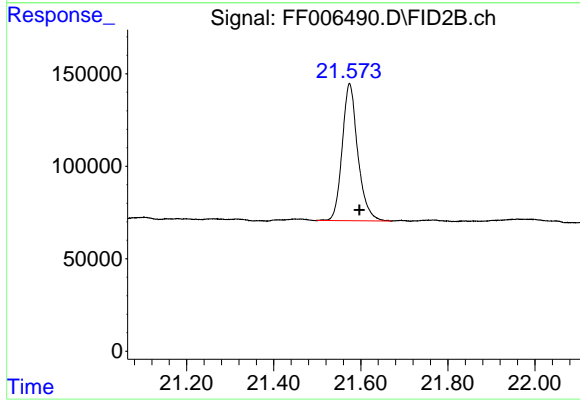


#16 N-HEXATRIACONTANE

R.T.: 19.987 min
Delta R.T.: -0.020 min
Response: 2163139
Conc: 22.35 ug/ml



#17 N-OCTATRIACONTANE
R.T.: 20.704 min
Delta R.T.: -0.022 min
Response: 1599615
Conc: 22.65 ug/ml



#18 N-TETRACONTANE
R.T.: 21.574 min
Delta R.T.: -0.023 min
Response: 1838113
Conc: 26.04 ug/ml