

Data Path : Z:\pestpcbsrv\HPCHEM1\FID\_F\Data\FF031125AR\  
 Data File : FF015648.D  
 Signal(s) : FID2B.ch  
 Acq On : 11 Mar 2025 09:36  
 Operator : YP\AJ  
 Sample : 20 PPM AROMATIC HC STD  
 Misc :  
 ALS Vial : 61 Sample Multiplier: 1

Instrument :  
 FID\_F  
 ClientSampleId :  
 20 PPM AROMATIC HC STD

Integration File: autoint1.e  
 Quant Time: Mar 12 01:13:41 2025  
 Quant Method : Z:\pestpcbsrv\HPCHEM1\FID\_F\Method\Aromatic EPH 022625.M  
 Quant Title : GC Extractables  
 QLast Update : Wed Feb 26 12:36:06 2025  
 Response via : Initial Calibration  
 Integrator: ChemStation

Volume Inj. : 1 µl  
 Signal Phase : Rxi-1ms  
 Signal Info : 20M x 0.18mm x 0.18µm

| Compound                           | R.T.   | Response   | Conc Units   |
|------------------------------------|--------|------------|--------------|
| -----                              |        |            |              |
| System Monitoring Compounds        |        |            |              |
| 4) S 2-Bromonaphthalene (S...      | 7.996  | 2455367    | 21.092 ug/ml |
| Spiked Amount 50.000               |        | Recovery = | 42.18%       |
| 6) S 2-Fluorobiphenyl (SURR)       | 8.876  | 1451974    | 20.384 ug/ml |
| Spiked Amount 50.000 Range 0 - 131 |        | Recovery = | 40.77%       |
| 11) S ortho-Terphenyl (SURR)       | 11.931 | 2979543    | 20.255 ug/ml |
| Spiked Amount 50.000               |        | Recovery = | 40.51%       |
| Target Compounds                   |        |            |              |
| 1) T 1,2,3-Trimethylbenzen...      | 4.603  | 2717342    | 21.049 ug/ml |
| 2) T Naphthalene (C11.7)           | 6.275  | 2665090    | 20.882 ug/ml |
| 3) T 2-Methylnaphthalene (...)     | 7.371  | 2659676    | 21.005 ug/ml |
| 5) T Acenaphthylene (C15.06)       | 8.671  | 2882275    | 20.390 ug/ml |
| 7) T Acenaphthene (C15.5)          | 8.968  | 2984882    | 20.957 ug/ml |
| 8) T Fluorene (C16.55)             | 9.760  | 2785246    | 20.932 ug/ml |
| 9) T Phenanthrene (C19.36)         | 11.168 | 2652790    | 20.394 ug/ml |
| 10) T Anthracene (C19.43)          | 11.244 | 2469960    | 19.720 ug/ml |
| 12) T Fluoranthene (C21.85)        | 12.991 | 2803093    | 19.849 ug/ml |
| 13) T Pyrene (C20.8)               | 13.289 | 2864722    | 19.926 ug/ml |
| 14) T Benzo[a]anthracene (C...     | 15.174 | 2243017    | 19.095 ug/ml |
| 15) T Chrysene (C27.41)            | 15.215 | 2855748    | 19.120 ug/ml |
| 16) T benzo[b]fluoranthene ...     | 16.735 | 2456283    | 18.860 ug/ml |
| 17) T Bnezo[k]fluoranthene ...     | 16.766 | 2787855    | 18.684 ug/ml |
| 18) T Benzo[a]pyrene (C31.34)      | 17.119 | 2411381    | 19.001 ug/ml |
| 19) T Indeno[1,2,3-cd]pyren...     | 18.495 | 1876037    | 18.329 ug/ml |
| 20) T Dibenz[a,h]anthracene...     | 18.534 | 2566244    | 19.848 ug/ml |
| 21) T Benzo[g,h,i]perylene ...     | 18.746 | 2366117    | 19.014 ug/ml |

(f)=RT Delta > 1/2 Window

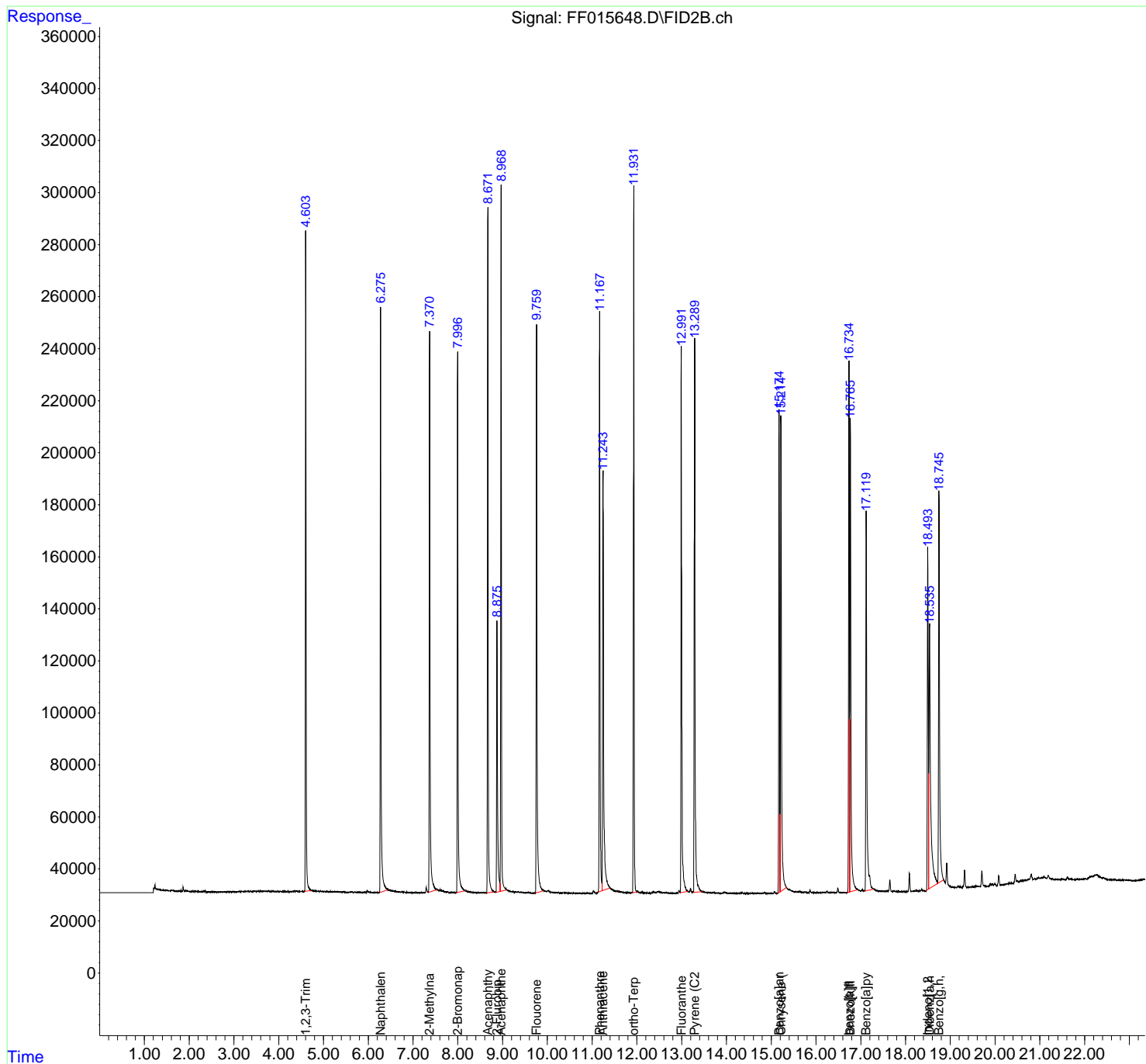
(m)=manual int.

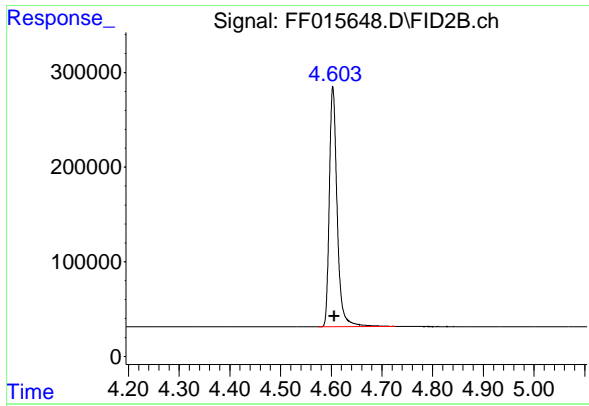
Data Path : Z:\pestpcbsrv\HPCHEM1\FID\_F\Data\FF031125AR\  
 Data File : FF015648.D  
 Signal(s) : FID2B.ch  
 Acq On : 11 Mar 2025 09:36  
 Operator : YP\AJ  
 Sample : 20 PPM AROMATIC HC STD  
 Misc :  
 ALS Vial : 61 Sample Multiplier: 1

Instrument :  
 FID\_F  
 ClientSampleId :  
 20 PPM AROMATIC HC STD

Integration File: autoint1.e  
 Quant Time: Mar 12 01:13:41 2025  
 Quant Method : Z:\pestpcbsrv\HPCHEM1\FID\_F\Method\Aromatic EPH 022625.M  
 Quant Title : GC Extractables  
 QLast Update : Wed Feb 26 12:36:06 2025  
 Response via : Initial Calibration  
 Integrator: ChemStation

Volume Inj. : 1 µl  
 Signal Phase : Rxi-1ms  
 Signal Info : 20M x 0.18mm x 0.18µm

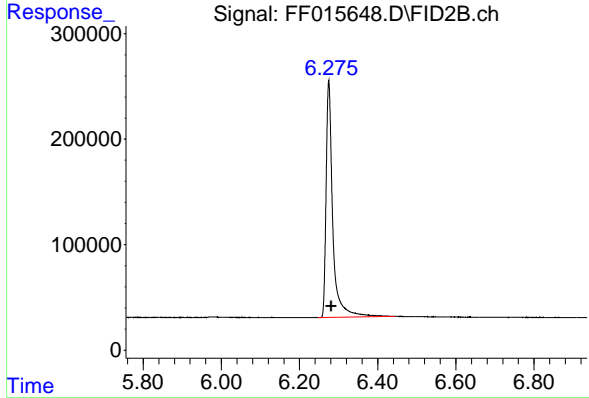




#1 1,2,3-Trimethylbenzene (C10.1)

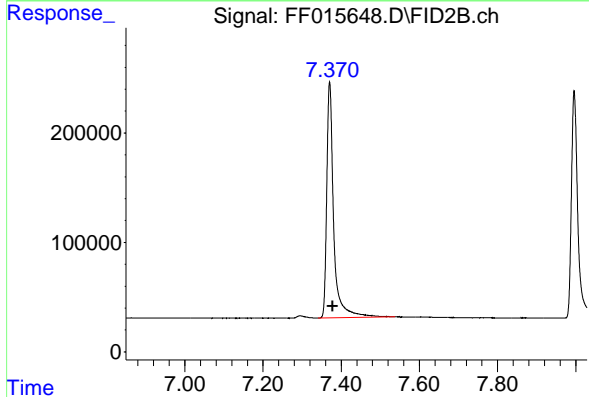
R.T.: 4.603 min  
 Delta R.T.: -0.003 min  
 Response: 2717342  
 Conc: 21.05 ug/ml

Instrument : FID\_F  
 ClientSampleId : 20 PPM AROMATIC HC STD



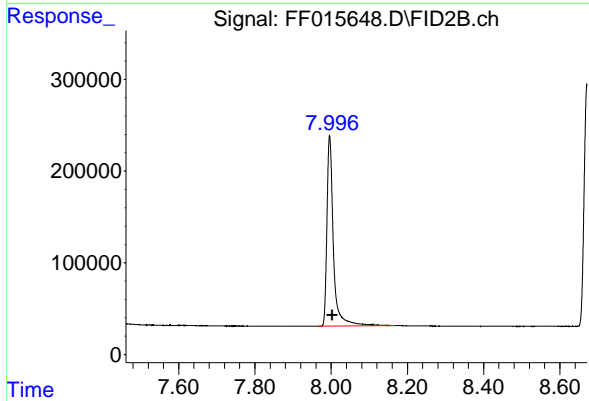
#2 Naphthalene (C11.7)

R.T.: 6.275 min  
 Delta R.T.: -0.006 min  
 Response: 2665090  
 Conc: 20.88 ug/ml



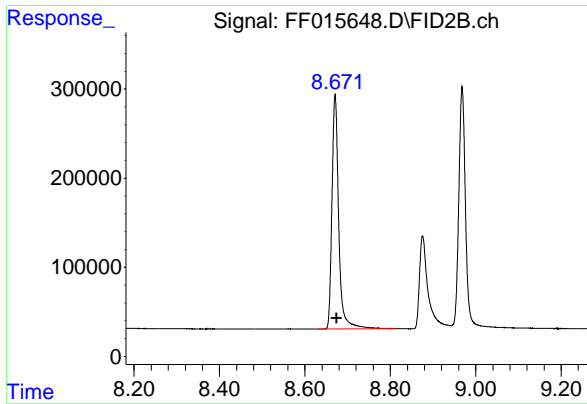
#3 2-Methylnaphthalene (C12.89)

R.T.: 7.371 min  
 Delta R.T.: -0.007 min  
 Response: 2659676  
 Conc: 21.01 ug/ml



#4 2-Bromonaphthalene (SURR)

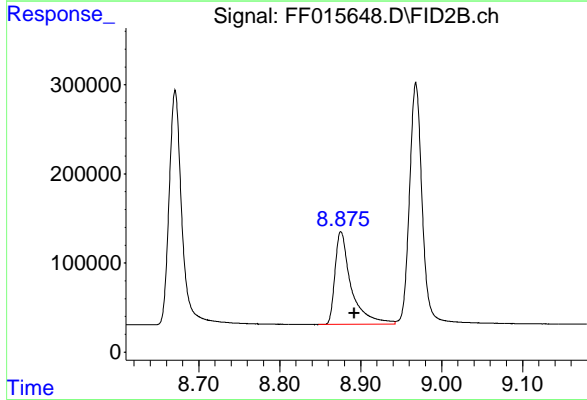
R.T.: 7.996 min  
 Delta R.T.: -0.007 min  
 Response: 2455367  
 Conc: 21.09 ug/ml



#5 Acenaphthylene (C15.06)

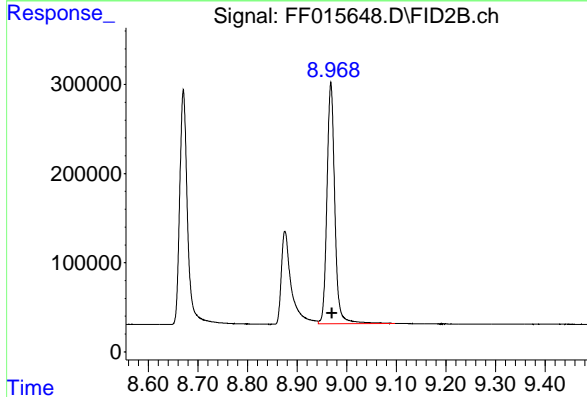
R.T.: 8.671 min  
 Delta R.T.: -0.003 min  
 Response: 2882275  
 Conc: 20.39 ug/ml

Instrument :  
 FID\_F  
 ClientSampleId :  
 20 PPM AROMATIC HC STD



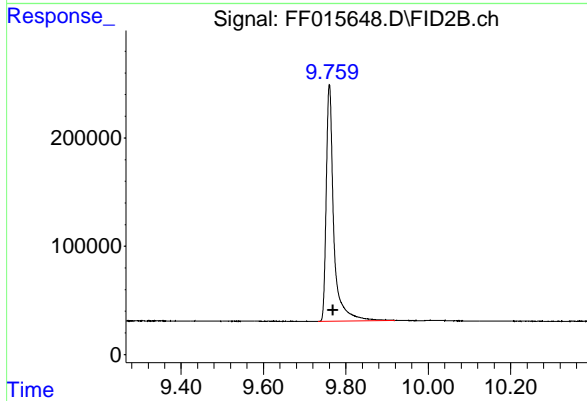
#6 2-Fluorobiphenyl (SURR)

R.T.: 8.876 min  
 Delta R.T.: -0.016 min  
 Response: 1451974  
 Conc: 20.38 ug/ml



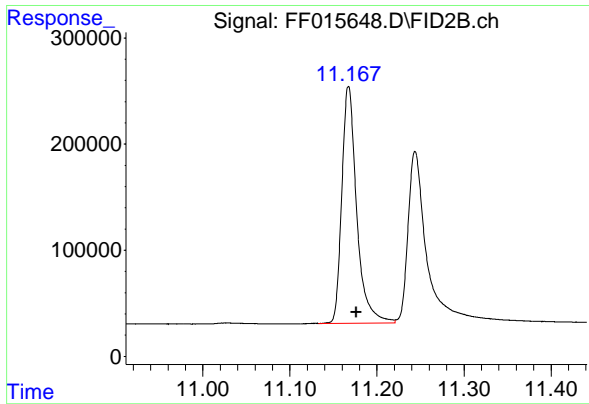
#7 Acenaphthene (C15.5)

R.T.: 8.968 min  
 Delta R.T.: -0.002 min  
 Response: 2984882  
 Conc: 20.96 ug/ml



#8 Fluorene (C16.55)

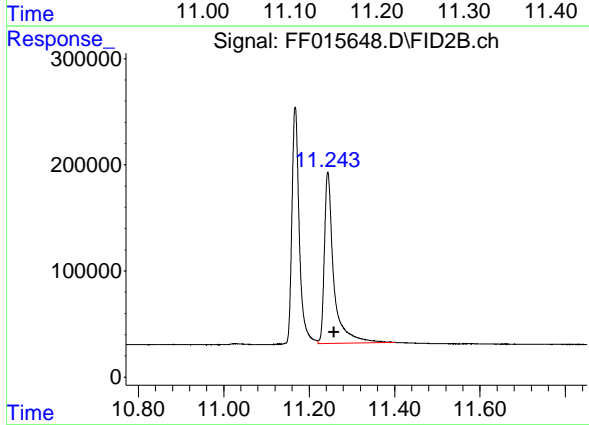
R.T.: 9.760 min  
 Delta R.T.: -0.009 min  
 Response: 2785246  
 Conc: 20.93 ug/ml



#9 Phenanthrene (C19.36)

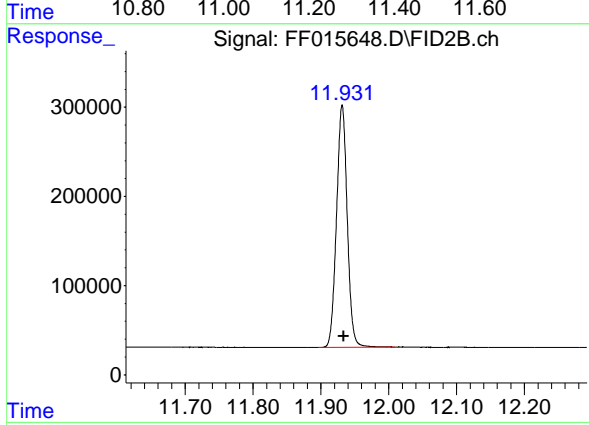
R.T.: 11.168 min  
 Delta R.T.: -0.008 min  
 Response: 2652790  
 Conc: 20.39 ug/ml

Instrument : FID\_F  
 ClientSampleId : 20 PPM AROMATIC HC STD



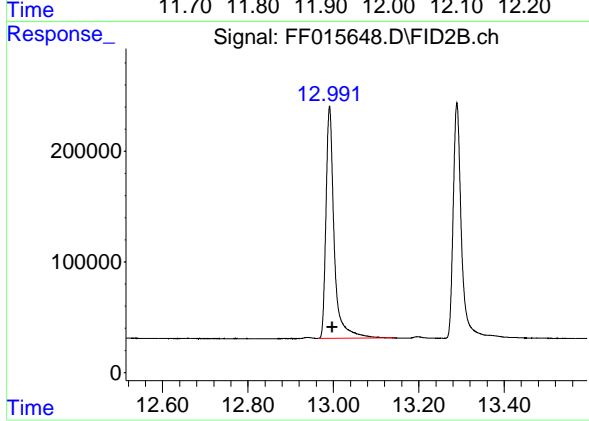
#10 Anthracene (C19.43)

R.T.: 11.244 min  
 Delta R.T.: -0.014 min  
 Response: 2469960  
 Conc: 19.72 ug/ml



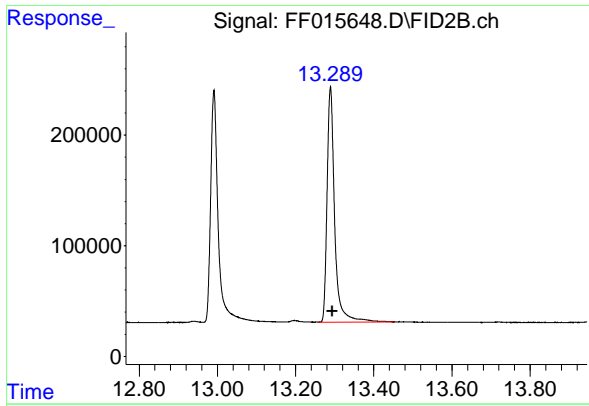
#11 ortho-Terphenyl (SURR)

R.T.: 11.931 min  
 Delta R.T.: -0.002 min  
 Response: 2979543  
 Conc: 20.25 ug/ml



#12 Fluoranthene (C21.85)

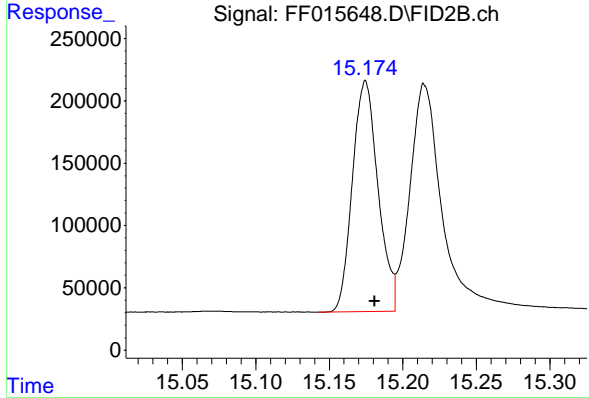
R.T.: 12.991 min  
 Delta R.T.: -0.007 min  
 Response: 2803093  
 Conc: 19.85 ug/ml



#13 Pyrene (C20.8)

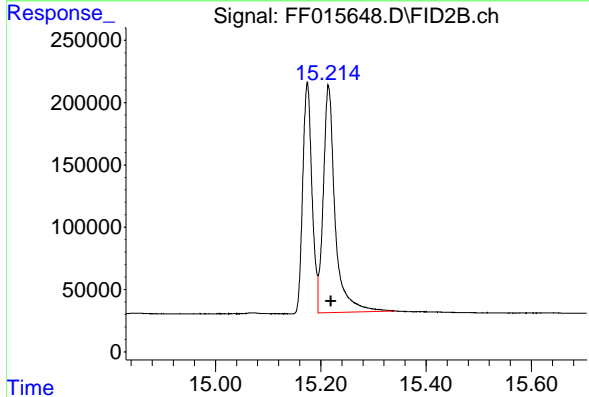
R.T.: 13.289 min  
 Delta R.T.: -0.005 min  
 Response: 2864722  
 Conc: 19.93 ug/ml

Instrument : FID\_F  
 ClientSampleId : 20 PPM AROMATIC HC STD



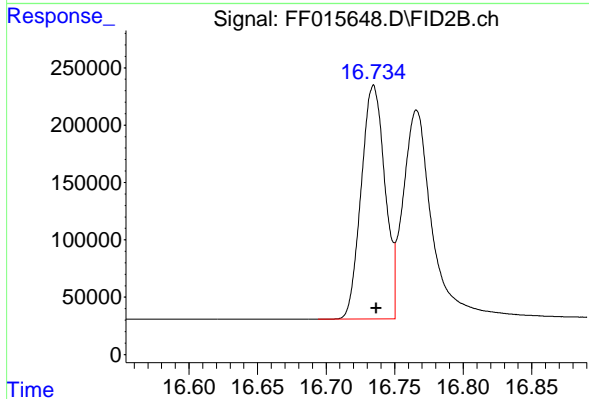
#14 Benzo[a]anthracene (C26.37)

R.T.: 15.174 min  
 Delta R.T.: -0.007 min  
 Response: 2243017  
 Conc: 19.10 ug/ml



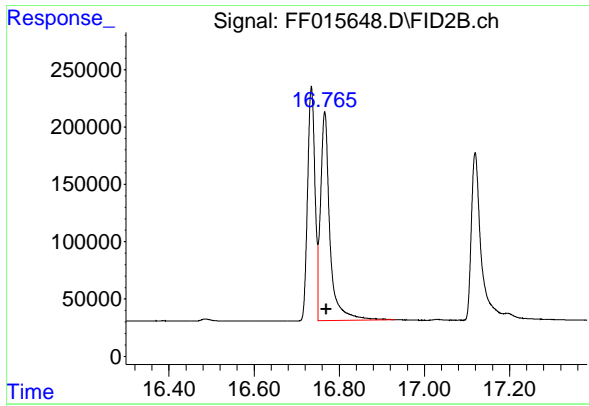
#15 Chrysene (C27.41)

R.T.: 15.215 min  
 Delta R.T.: -0.005 min  
 Response: 2855748  
 Conc: 19.12 ug/ml



#16 benzo[b]fluoranthene (C30.41)

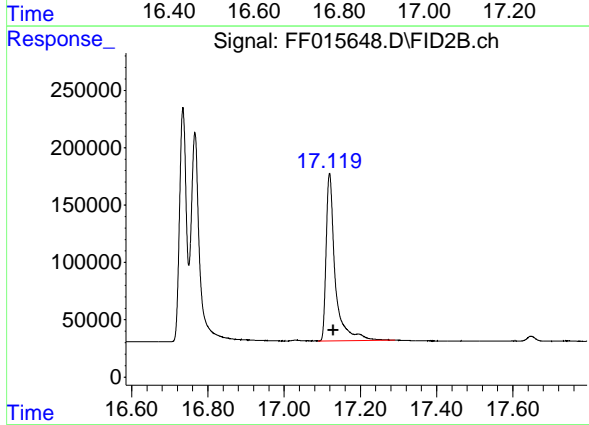
R.T.: 16.735 min  
 Delta R.T.: -0.002 min  
 Response: 2456283  
 Conc: 18.86 ug/ml



#17 Bnezo[k]fluoranthene (C30.14)

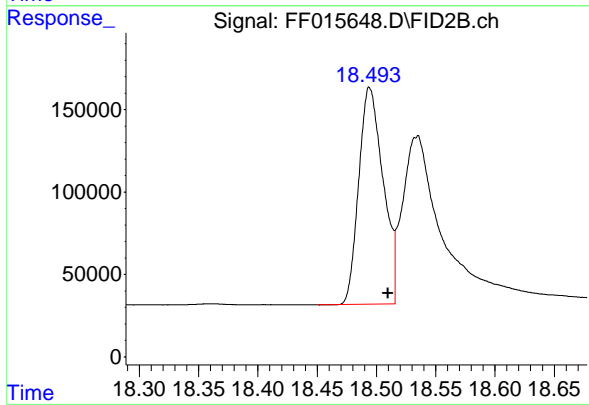
R.T.: 16.766 min  
 Delta R.T.: -0.004 min  
 Response: 2787855  
 Conc: 18.68 ug/ml

Instrument : FID\_F  
 ClientSampleId : 20 PPM AROMATIC HC STD



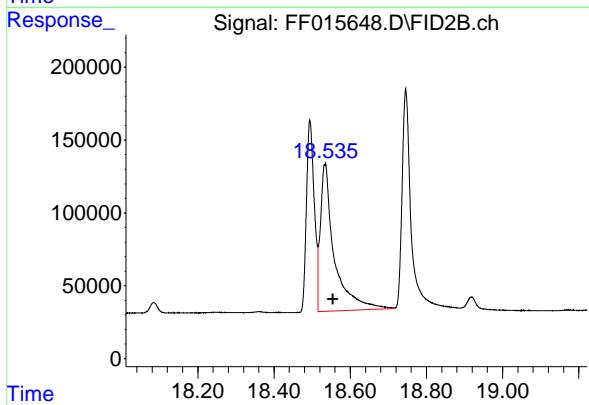
#18 Benzo[a]pyrene (C31.34)

R.T.: 17.119 min  
 Delta R.T.: -0.010 min  
 Response: 2411381  
 Conc: 19.00 ug/ml



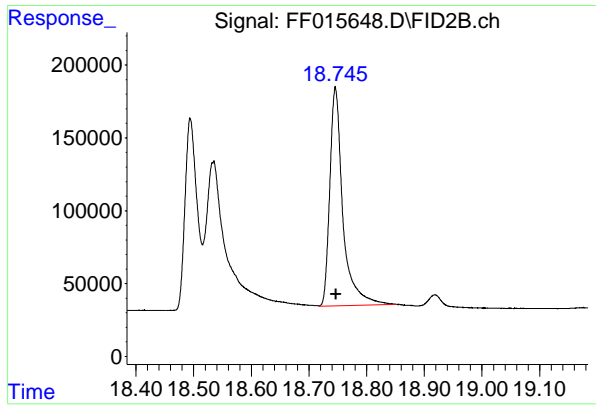
#19 Indeno[1,2,3-cd]pyrene (C35.01)

R.T.: 18.495 min  
 Delta R.T.: -0.015 min  
 Response: 1876037  
 Conc: 18.33 ug/ml



#20 Dibenz[a,h]anthracene (C30.36)

R.T.: 18.534 min  
 Delta R.T.: -0.021 min  
 Response: 2566244  
 Conc: 19.85 ug/ml



#21 Benzo[g,h,i]perylene (C34.01)

R.T.: 18.746 min

Delta R.T.: -0.001 min

Response: 2366117

Conc: 19.01 ug/ml

Instrument :

FID\_F

ClientSampleId :

20 PPM AROMATIC HC STD