

Data Path : Z:\pestpcbsrv\HPCHEM1\FID\_F\Data\FF031819\  
 Data File : FF003883.D  
 Signal(s) : FID2B.ch  
 Acq On : 18 Mar 2019 20:15  
 Operator : AJ\SJ  
 Sample : I.BLK  
 Misc :  
 ALS Vial : 52 Sample Multiplier: 1

Integration File: autoint1.e  
 Quant Time: Mar 19 01:38:43 2019  
 Quant Method : Z:\pestpcbsrv\HPCHEM1\FID\_F\Method\FF030119.M  
 Quant Title :  
 QLast Update : Mon Mar 04 08:35:38 2019  
 Response via : Initial Calibration  
 Integrator: ChemStation

Volume Inj. : 1uL  
 Signal Phase : Rxi-1ms  
 Signal Info : 20mx0.18mmx0.18um

Compound	R.T.	Response	Conc Units
-----			
System Monitoring Compounds			
9) S TETRACOSANE-d50 (SURR...	14.581	2031617	14.592 ug/ml
Target Compounds			
13) N-TRIACONTANE	17.650	92854	0.631 ug/ml
14) N-DOTRIACONTANE	18.488	160628	1.130 ug/ml
16) N-HEXATRIACONTANE	20.052	256942	1.969 ug/ml
18) N-TETRACONTANE	21.653	395676	3.180 ug/ml
-----			

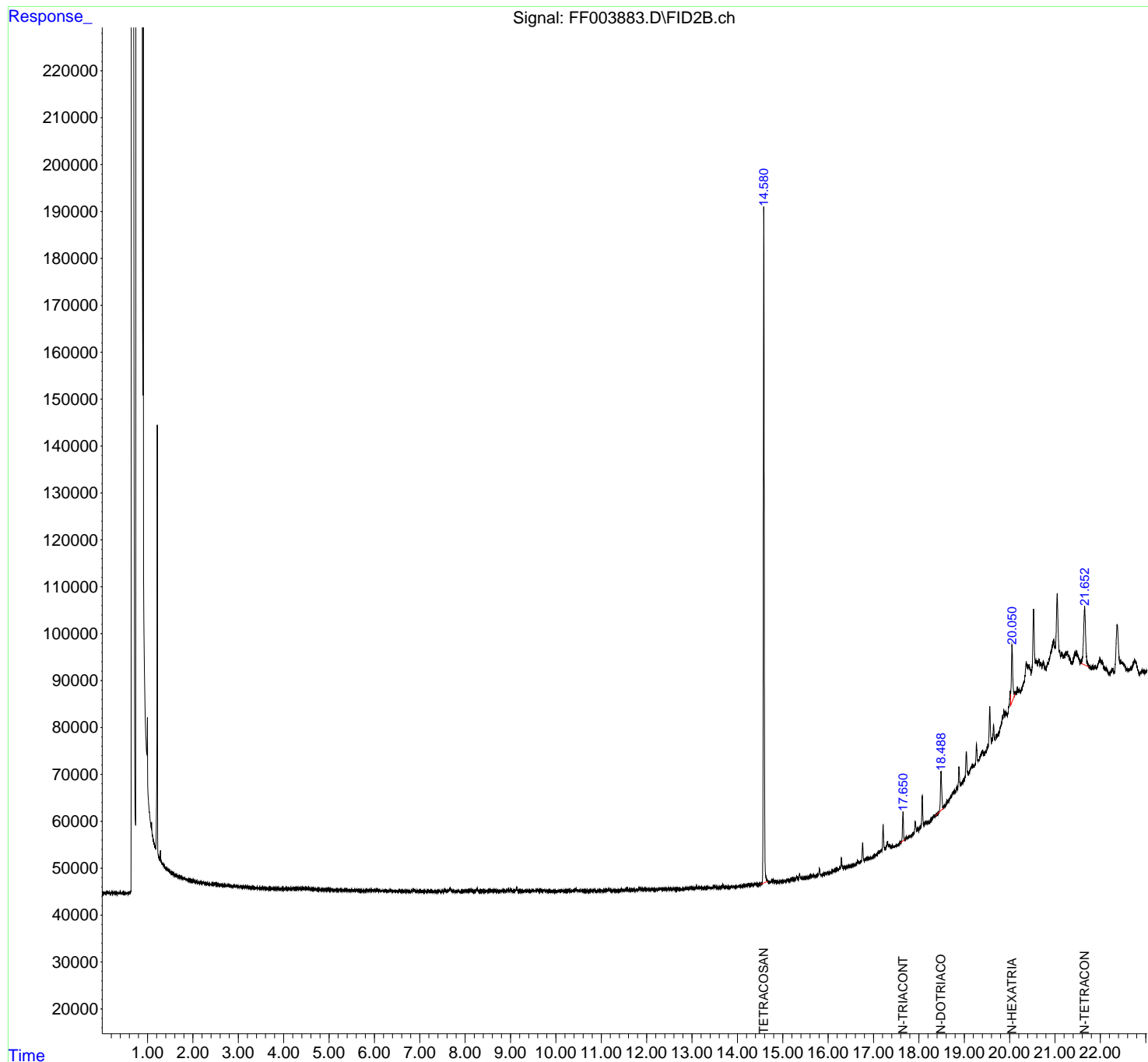
(f)=RT Delta > 1/2 Window

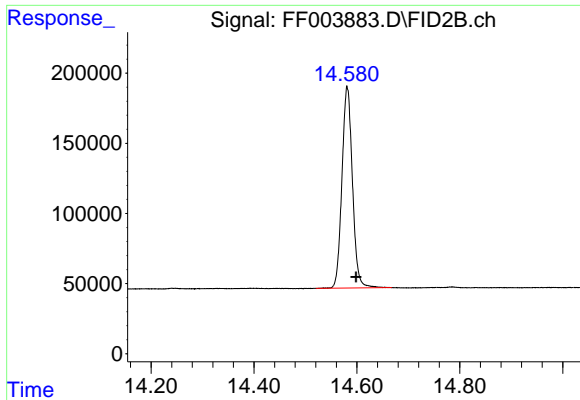
(m)=manual int.

Data Path : Z:\pestpcbsrv\HPCHEM1\FID\_F\Data\FF031819\  
 Data File : FF003883.D  
 Signal(s) : FID2B.ch  
 Acq On : 18 Mar 2019 20:15  
 Operator : AJ\SJ  
 Sample : I.BLK  
 Misc :  
 ALS Vial : 52 Sample Multiplier: 1

Integration File: autoint1.e  
 Quant Time: Mar 19 01:38:43 2019  
 Quant Method : Z:\pestpcbsrv\HPCHEM1\FID\_F\Method\FF030119.M  
 Quant Title :  
 QLast Update : Mon Mar 04 08:35:38 2019  
 Response via : Initial Calibration  
 Integrator: ChemStation

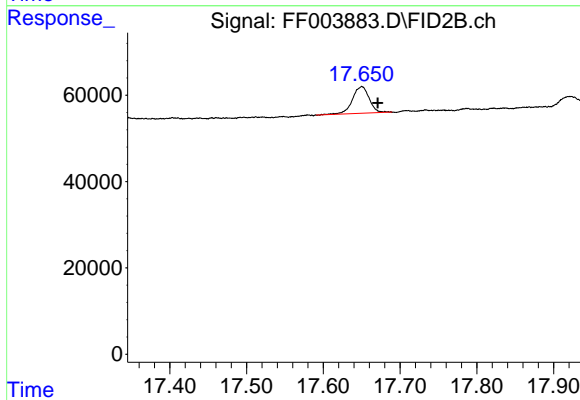
Volume Inj. : 1uL  
 Signal Phase : Rxi-1ms  
 Signal Info : 20mx0.18mmx0.18um





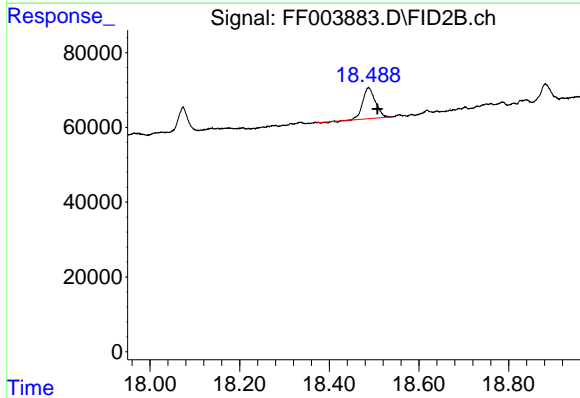
#9 TETRACOSANE-d50 (SURROGATE)

R.T.: 14.581 min  
Delta R.T.: -0.017 min  
Response: 2031617  
Conc: 14.59 ug/ml



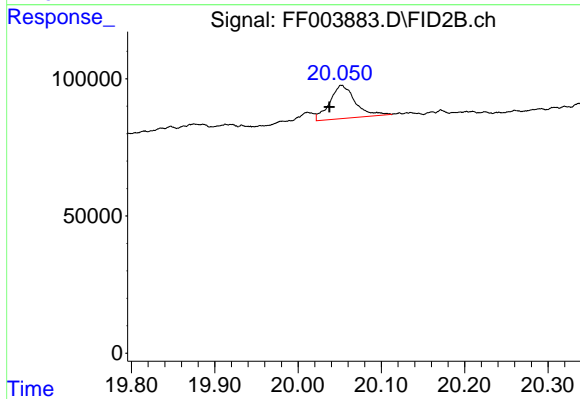
#13 N-TRIACONTANE

R.T.: 17.650 min  
Delta R.T.: -0.020 min  
Response: 92854  
Conc: 0.63 ug/ml



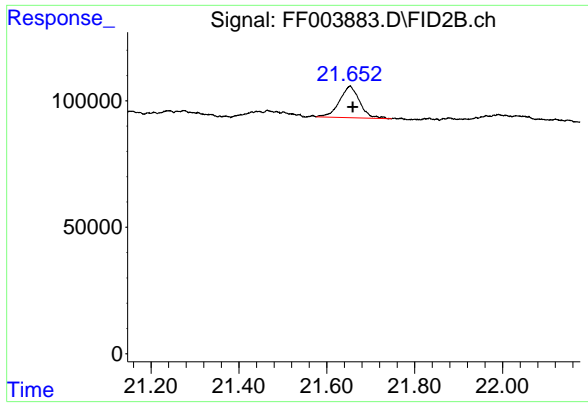
#14 N-DOTRIACONTANE

R.T.: 18.488 min  
Delta R.T.: -0.019 min  
Response: 160628  
Conc: 1.13 ug/ml



#16 N-HEXATRIACONTANE

R.T.: 20.052 min  
Delta R.T.: 0.014 min  
Response: 256942  
Conc: 1.97 ug/ml



#18 N-TETRACONTANE

R.T.: 21.653 min  
Delta R.T.: -0.006 min  
Response: 395676  
Conc: 3.18 ug/ml