

Data Path : Z:\pestpcbsrv\HPCHEM1\FID_F\Data\FF032125AL\
 Data File : FF015716.D
 Signal(s) : FID2B.ch
 Acq On : 21 Mar 2025 08:54
 Operator : YP\AJ
 Sample : 20 PPM ALIPHATIC HC STD
 Misc :
 ALS Vial : 11 Sample Multiplier: 1

Instrument :
 FID_F
 ClientSampleId :
 20 PPM ALIPHATIC HC STD

Integration File: autoint1.e
 Quant Time: Mar 21 22:40:35 2025
 Quant Method : Z:\pestpcbsrv\HPCHEM1\FID_F\Method\Aliphatic EPH 031725.M
 Quant Title : GC Extractables
 QLast Update : Tue Mar 18 02:31:19 2025
 Response via : Initial Calibration
 Integrator: ChemStation

Volume Inj. : 1 ul
 Signal Phase : Rxi-1ms
 Signal Info : 20M x 0.18mm x 0.18um

Compound	R.T.	Response	Conc Units

System Monitoring Compounds			
9) S ortho-Terphenyl (SURR)	11.936	3228338	21.190 ug/ml
Spiked Amount	50.000	Recovery	= 42.38%
12) S 1-chlorooctadecane (S...	13.371	2446421	21.556 ug/ml
Spiked Amount	50.000	Recovery	= 43.11%
Target Compounds			
1) T n-Nonane (C9)	3.309	2736338	21.603 ug/ml
2) T n-Decane (C10)	4.565	2792451	21.745 ug/ml
3) T A~Naphthalene (C11.7)	6.277	2855825	22.004 ug/ml
4) T n-Dodecane (C12)	6.732	2831169	21.725 ug/ml
5) T A~2-methylnaphthalene...	7.374	2665486	22.493 ug/ml
6) T n-Tetradecane (C14)	8.559	2817308	21.754 ug/ml
7) T n-Hexadecane (C16)	10.168	2931038	21.919 ug/ml
8) T n-Octadecane (C18)	11.612	3007858	21.843 ug/ml
10) T n-Eicosane (C20)	12.923	2924689	21.701 ug/ml
11) T n-Heneicosane (C21)	13.537	2890444	21.628 ug/ml
13) T n-Docosane (C22)	14.123	2857145	21.351 ug/ml
14) T n-Tetracosane (C24)	15.228	2842848	21.235 ug/ml
15) T n-Hexacosane (C26)	16.251	2738291	20.937 ug/ml
16) T n-Octacosane (C28)	17.201	2658453	20.351 ug/ml
17) T n-Tricontane (C30)	18.090	2653183	19.675 ug/ml
18) T n-Dotriacontane (C32)	18.923	2531270	19.411 ug/ml
19) T n-Tetratriacontane (C34)	19.708	2210230	18.934 ug/ml
20) T n-Hexatriacontane (C36)	20.448	1925375	19.396 ug/ml
21) T n-Octatriacontane (C38)	21.185	1817021	20.796 ug/ml
22) T n-Tetracontane (C40)	22.100	1723745	21.478 ug/ml

(f)=RT Delta > 1/2 Window

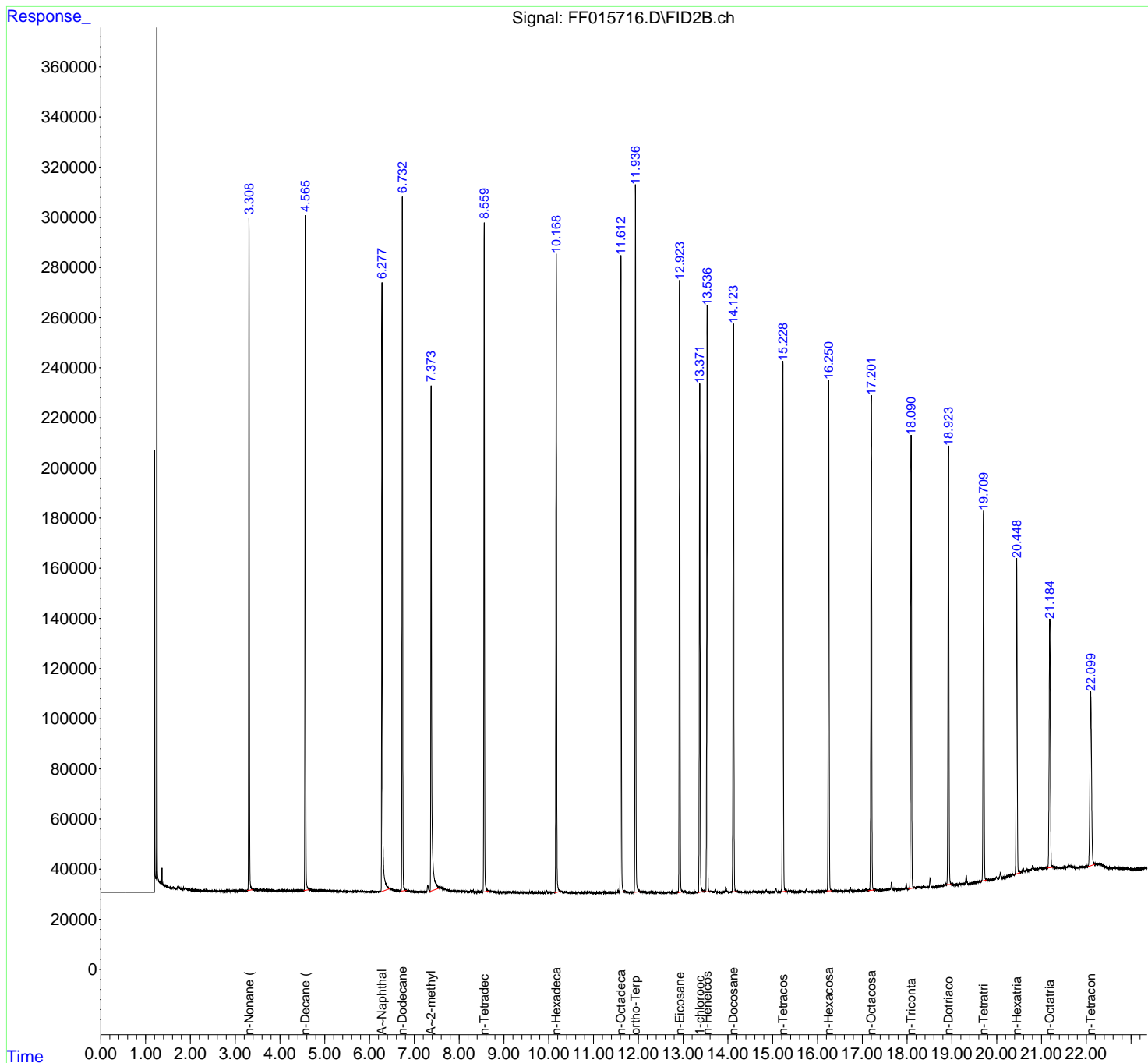
(m)=manual int.

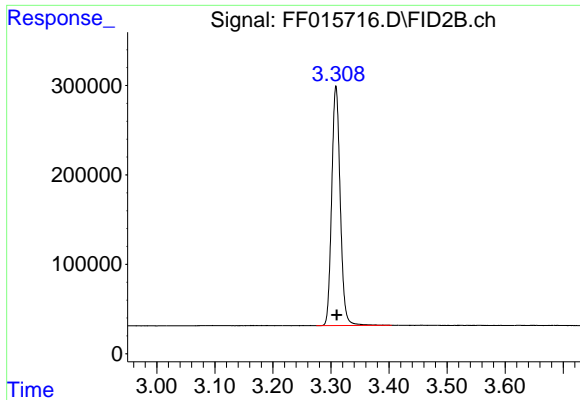
Data Path : Z:\pestpcbsrv\HPCHEM1\FID_F\Data\FF032125AL\
 Data File : FF015716.D
 Signal(s) : FID2B.ch
 Acq On : 21 Mar 2025 08:54
 Operator : YP\AJ
 Sample : 20 PPM ALIPHATIC HC STD
 Misc :
 ALS Vial : 11 Sample Multiplier: 1

Instrument :
 FID_F
 ClientSampleId :
 20 PPM ALIPHATIC HC STD

Integration File: autoint1.e
 Quant Time: Mar 21 22:40:35 2025
 Quant Method : Z:\pestpcbsrv\HPCHEM1\FID_F\Method\Aliphatic EPH 031725.M
 Quant Title : GC Extractables
 QLast Update : Tue Mar 18 02:31:19 2025
 Response via : Initial Calibration
 Integrator: ChemStation

Volume Inj. : 1 ul
 Signal Phase : Rxi-1ms
 Signal Info : 20M x 0.18mm x 0.18um

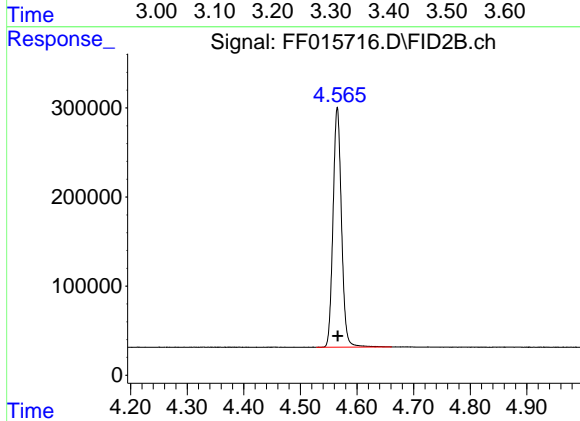




#1 n-Nonane (C9)

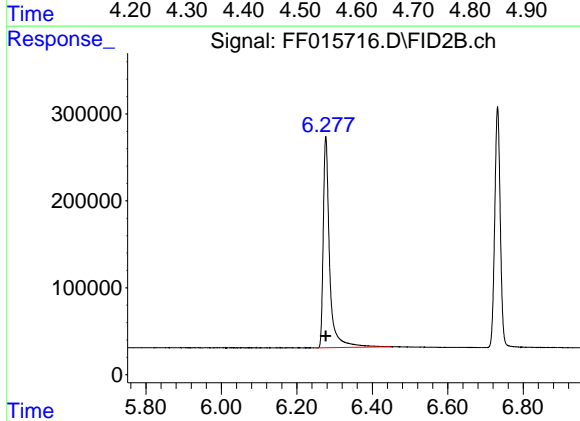
R.T.: 3.309 min
 Delta R.T.: -0.001 min
 Response: 2736338
 Conc: 21.60 ug/ml

Instrument : FID_F
 ClientSampleId : 20 PPM ALIPHATIC HC STD



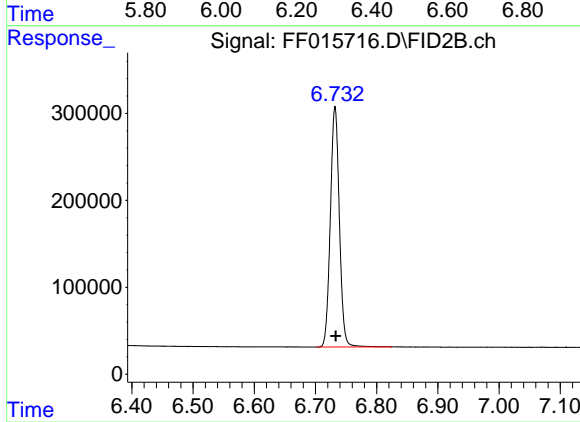
#2 n-Decane (C10)

R.T.: 4.565 min
 Delta R.T.: 0.000 min
 Response: 2792451
 Conc: 21.75 ug/ml



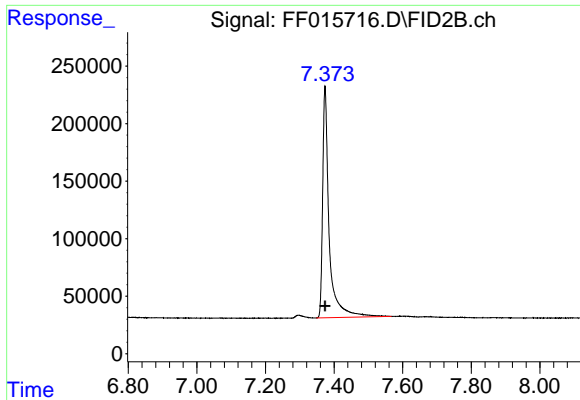
#3 A~Naphthalene (C11.7)

R.T.: 6.277 min
 Delta R.T.: 0.000 min
 Response: 2855825
 Conc: 22.00 ug/ml



#4 n-Dodecane (C12)

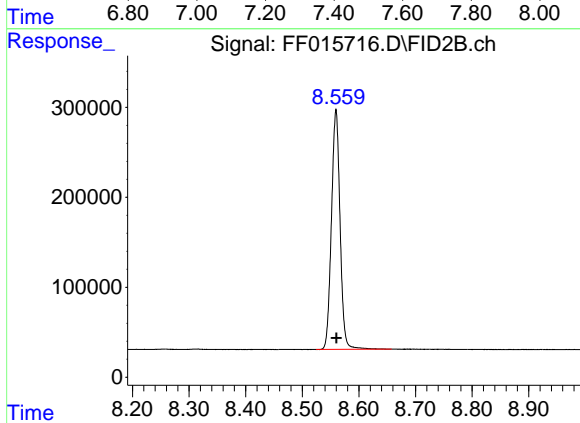
R.T.: 6.732 min
 Delta R.T.: 0.000 min
 Response: 2831169
 Conc: 21.72 ug/ml



#5 A~2-methylnaphthalene (C12.89)

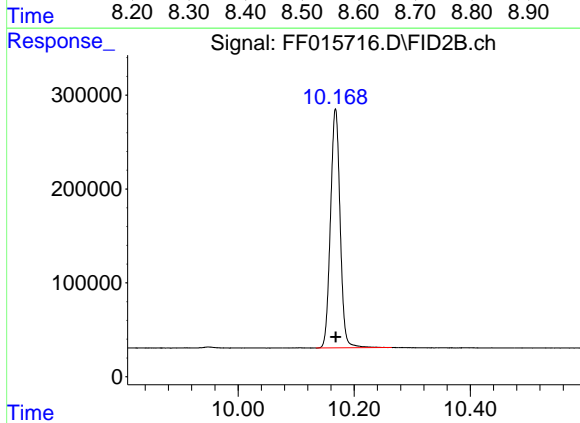
R.T.: 7.374 min
 Delta R.T.: 0.000 min
 Response: 2665486
 Conc: 22.49 ug/ml

Instrument : FID_F
 ClientSampleId : 20 PPM ALIPHATIC HC STD



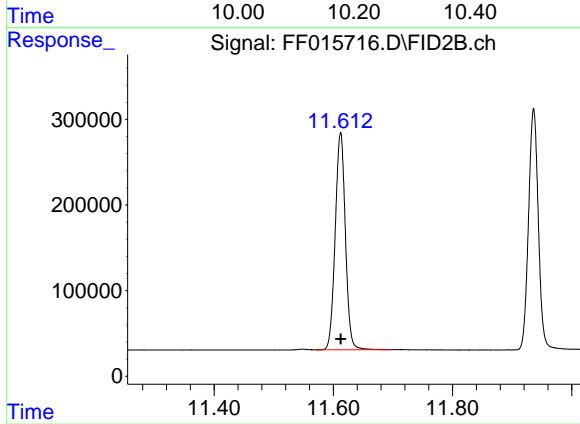
#6 n-Tetradecane (C14)

R.T.: 8.559 min
 Delta R.T.: 0.000 min
 Response: 2817308
 Conc: 21.75 ug/ml



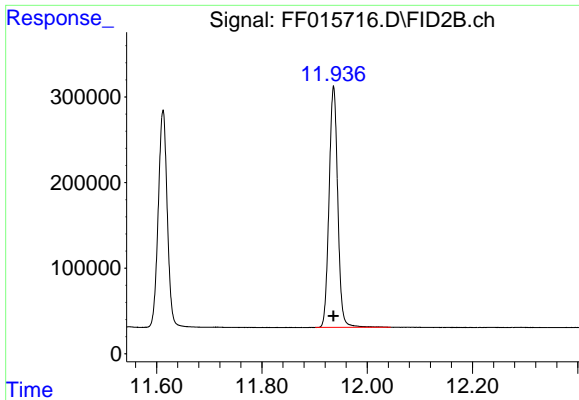
#7 n-Hexadecane (C16)

R.T.: 10.168 min
 Delta R.T.: 0.000 min
 Response: 2931038
 Conc: 21.92 ug/ml



#8 n-Octadecane (C18)

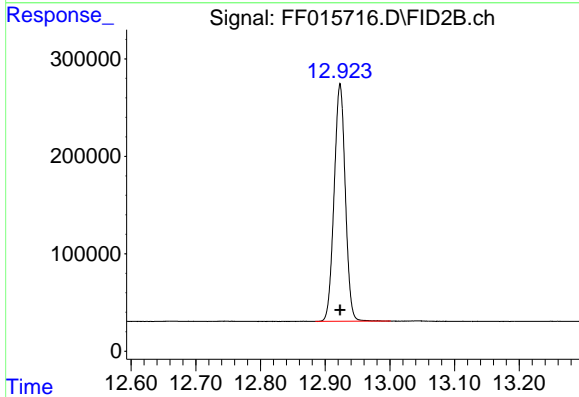
R.T.: 11.612 min
 Delta R.T.: 0.000 min
 Response: 3007858
 Conc: 21.84 ug/ml



#9 ortho-Terphenyl (SURR)

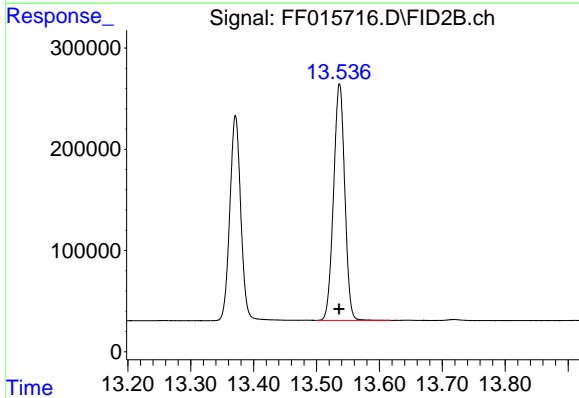
R.T.: 11.936 min
 Delta R.T.: 0.000 min
 Response: 3228338
 Conc: 21.19 ug/ml

Instrument : FID_F
 ClientSampleId : 20 PPM ALIPHATIC HC STD



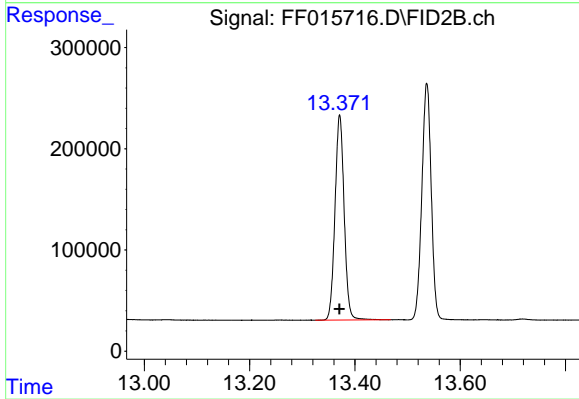
#10 n-Eicosane (C20)

R.T.: 12.923 min
 Delta R.T.: 0.000 min
 Response: 2924689
 Conc: 21.70 ug/ml



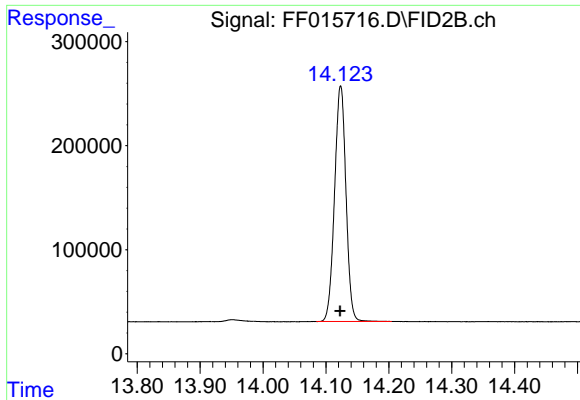
#11 n-Heneicosane (C21)

R.T.: 13.537 min
 Delta R.T.: 0.000 min
 Response: 2890444
 Conc: 21.63 ug/ml



#12 1-chlorooctadecane (SURR)

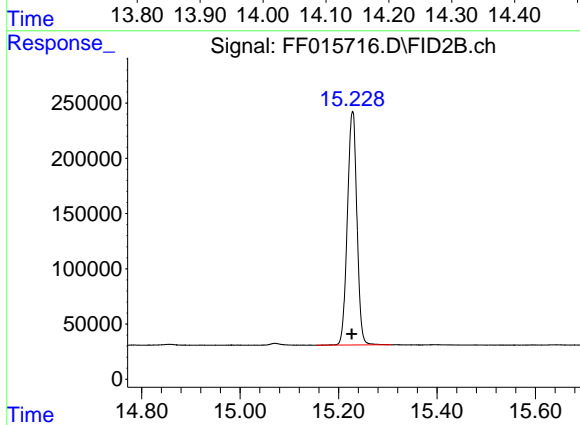
R.T.: 13.371 min
 Delta R.T.: 0.000 min
 Response: 2446421
 Conc: 21.56 ug/ml



#13 n-Docosane (C22)

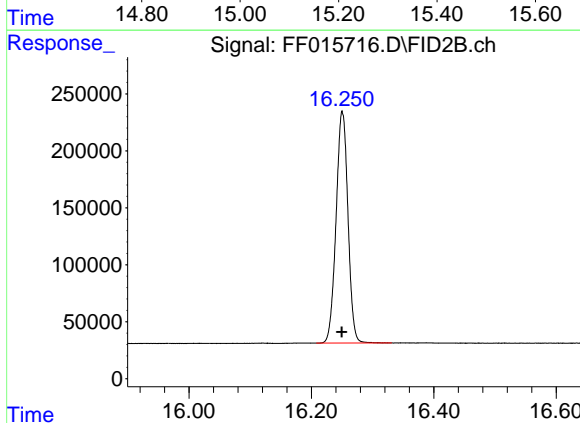
R.T.: 14.123 min
Delta R.T.: 0.001 min
Response: 2857145
Conc: 21.35 ug/ml

Instrument :
FID_F
ClientSampleId :
20 PPM ALIPHATIC HC STD



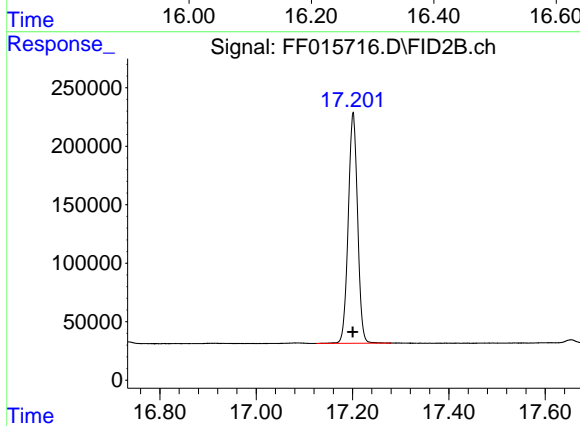
#14 n-Tetracosane (C24)

R.T.: 15.228 min
Delta R.T.: 0.002 min
Response: 2842848
Conc: 21.24 ug/ml



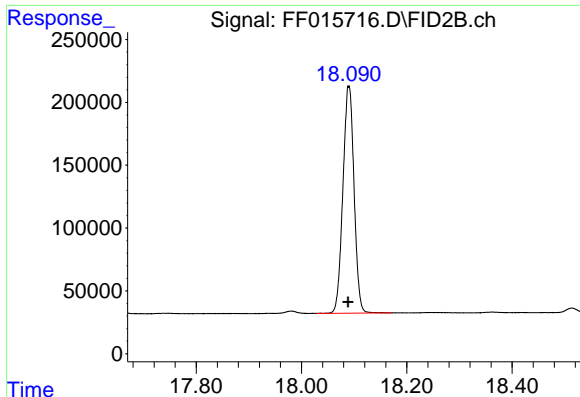
#15 n-Hexacosane (C26)

R.T.: 16.251 min
Delta R.T.: 0.001 min
Response: 2738291
Conc: 20.94 ug/ml



#16 n-Octacosane (C28)

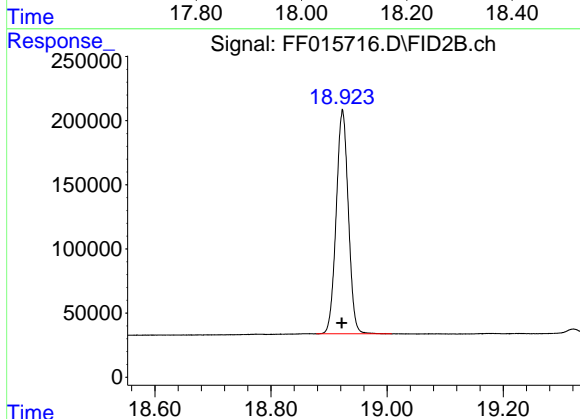
R.T.: 17.201 min
Delta R.T.: 0.001 min
Response: 2658453
Conc: 20.35 ug/ml



#17 n-Tricontane (C30)

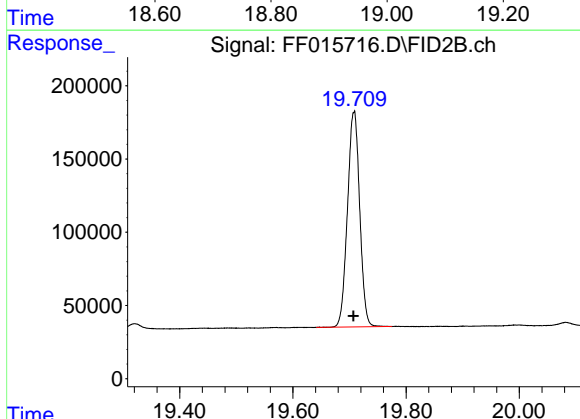
R.T.: 18.090 min
Delta R.T.: 0.001 min
Response: 2653183
Conc: 19.67 ug/ml

Instrument :
FID_F
ClientSampleId :
20 PPM ALIPHATIC HC STD



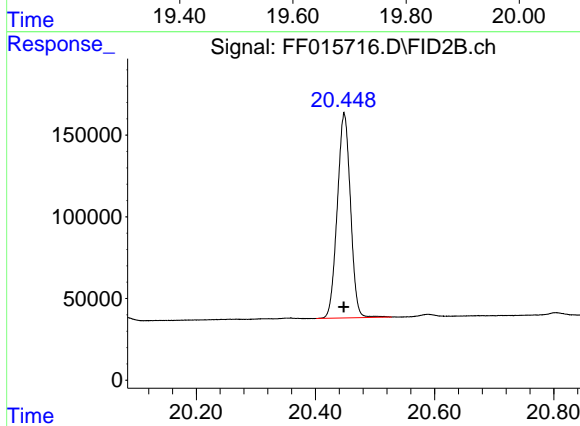
#18 n-Dotriacontane (C32)

R.T.: 18.923 min
Delta R.T.: 0.000 min
Response: 2531270
Conc: 19.41 ug/ml



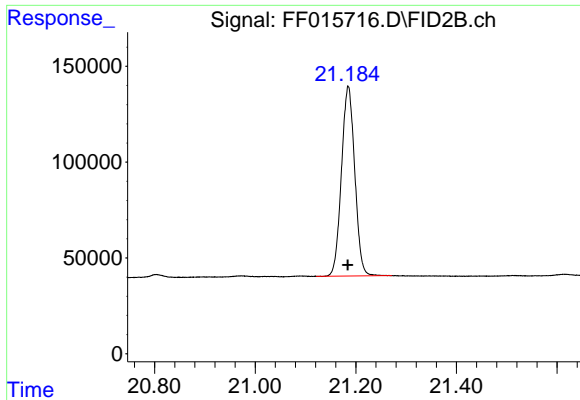
#19 n-Tetratriacontane (C34)

R.T.: 19.708 min
Delta R.T.: 0.001 min
Response: 2210230
Conc: 18.93 ug/ml



#20 n-Hexatriacontane (C36)

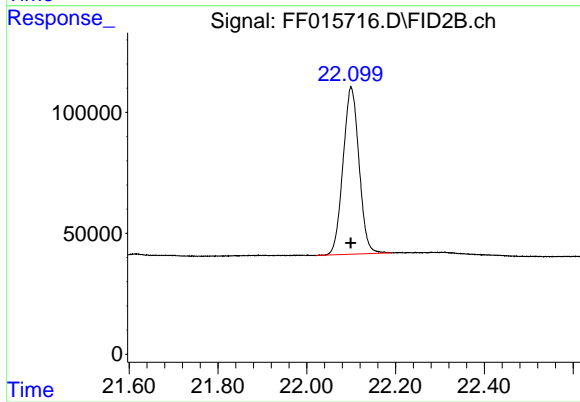
R.T.: 20.448 min
Delta R.T.: 0.000 min
Response: 1925375
Conc: 19.40 ug/ml



#21 n-Octatriacontane (C38)

R.T.: 21.185 min
Delta R.T.: 0.001 min
Response: 1817021
Conc: 20.80 ug/ml

Instrument :
FID_F
ClientSampleId :
20 PPM ALIPHATIC HC STD



#22 n-Tetracontane (C40)

R.T.: 22.100 min
Delta R.T.: 0.001 min
Response: 1723745
Conc: 21.48 ug/ml