

Data Path : Z:\pestpcbsrv\HPCHEM1\FID_F\Data\FF041825AL\
 Data File : FF015778.D
 Signal(s) : FID2B.ch
 Acq On : 17 Apr 2025 16:55
 Operator : YP\AJ
 Sample : 20 PPM ALIPHATIC HC STD3
 Misc :
 ALS Vial : 23 Sample Multiplier: 1

Instrument :
 FID_F
 ClientSampleId :
 20 PPM ALIPHATIC HC STD3

Integration File: autoint1.e
 Quant Time: Apr 21 02:41:30 2025
 Quant Method : Z:\pestpcbsrv\HPCHEM1\FID_F\Method\Aliphatic EPH 041825.M
 Quant Title : GC Extractables
 QLast Update : Mon Apr 21 02:35:38 2025
 Response via : Initial Calibration
 Integrator: ChemStation

Volume Inj. : 1 ul
 Signal Phase : Rxi-1ms
 Signal Info : 20M x 0.18mm x 0.18um

Compound	R.T.	Response	Conc Units

System Monitoring Compounds			
9) S ortho-Terphenyl (SURR)	11.932	2888360	20.000 ug/ml
Spiked Amount	50.000	Recovery	= 40.00%
12) S 1-chlorooctadecane (S...	13.365	2095422	20.000 ug/ml
Spiked Amount	50.000	Recovery	= 40.00%
Target Compounds			
1) T n-Nonane (C9)	3.307	2207241	20.000 ug/ml
2) T n-Decane (C10)	4.563	2221946	20.000 ug/ml
3) T A~Naphthalene (C11.7)	6.278	2191888	20.000 ug/ml
4) T n-Dodecane (C12)	6.730	2271830	20.000 ug/ml
5) T A~2-methylnaphthalene...	7.377	2015278	20.000 ug/ml
6) T n-Tetradecane (C14)	8.557	2248457	20.000 ug/ml
7) T n-Hexadecane (C16)	10.164	2253429	20.000 ug/ml
8) T n-Octadecane (C18)	11.607	2295225	20.000 ug/ml
10) T n-Eicosane (C20)	12.918	2304454	20.000 ug/ml
11) T n-Heneicosane (C21)	13.530	2308287	20.000 ug/ml
13) T n-Docosane (C22)	14.117	2292807	20.000 ug/ml
14) T n-Tetracosane (C24)	15.221	2309451	20.000 ug/ml
15) T n-Hexacosane (C26)	16.243	2232641	20.000 ug/ml
16) T n-Octacosane (C28)	17.193	2202832	20.000 ug/ml
17) T n-Tricontane (C30)	18.082	2210617	20.000 ug/ml
18) T n-Dotriacontane (C32)	18.916	2236855	20.000 ug/ml
19) T n-Tetratriacontane (C34)	19.700	2104549	20.000 ug/ml
20) T n-Hexatriacontane (C36)	20.439	2108779	20.000 ug/ml
21) T n-Octatriacontane (C38)	21.176	1934276	20.000 ug/ml
22) T n-Tetracontane (C40)	22.088	1910959	20.000 ug/ml

(f)=RT Delta > 1/2 Window

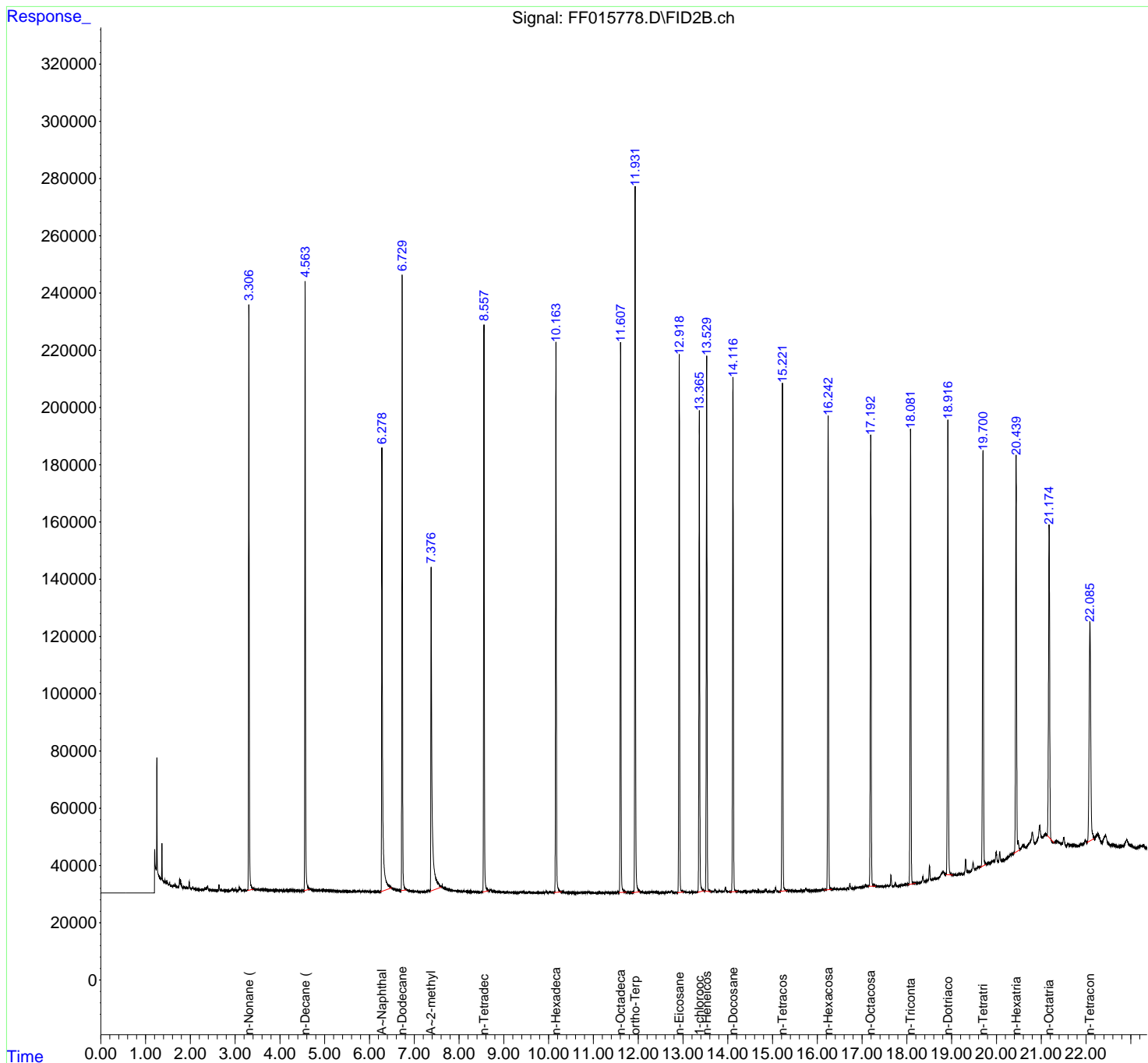
(m)=manual int.

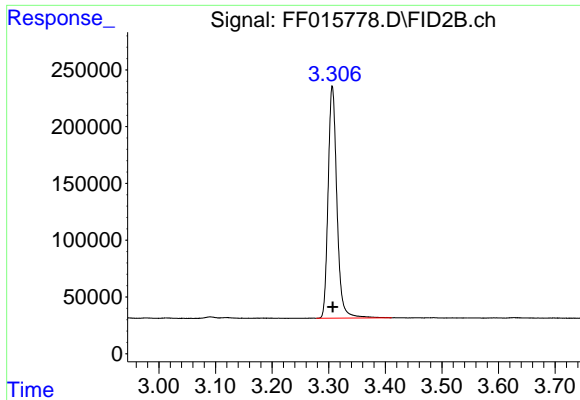
Data Path : Z:\pestpcbsrv\HPCHEM1\FID_F\Data\FF041825AL\
 Data File : FF015778.D
 Signal(s) : FID2B.ch
 Acq On : 17 Apr 2025 16:55
 Operator : YP\AJ
 Sample : 20 PPM ALIPHATIC HC STD3
 Misc :
 ALS Vial : 23 Sample Multiplier: 1

Instrument :
 FID_F
 ClientSampleId :
 20 PPM ALIPHATIC HC STD3

Integration File: autoint1.e
 Quant Time: Apr 21 02:41:30 2025
 Quant Method : Z:\pestpcbsrv\HPCHEM1\FID_F\Method\Aliphatic EPH 041825.M
 Quant Title : GC Extractables
 QLast Update : Mon Apr 21 02:35:38 2025
 Response via : Initial Calibration
 Integrator: ChemStation

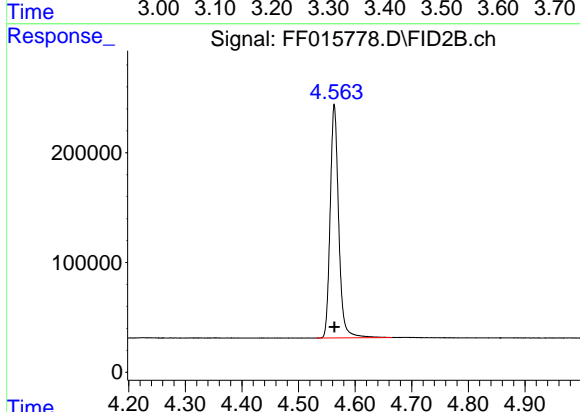
Volume Inj. : 1 ul
 Signal Phase : Rxi-1ms
 Signal Info : 20M x 0.18mm x 0.18um



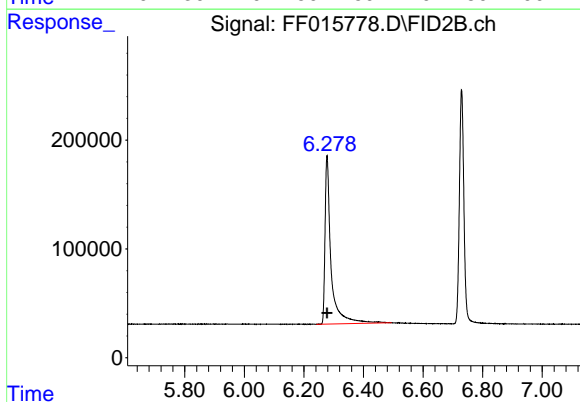


#1 n-Nonane (C9)
 R.T.: 3.307 min
 Delta R.T.: 0.000 min
 Response: 2207241
 Conc: 20.00 ug/ml

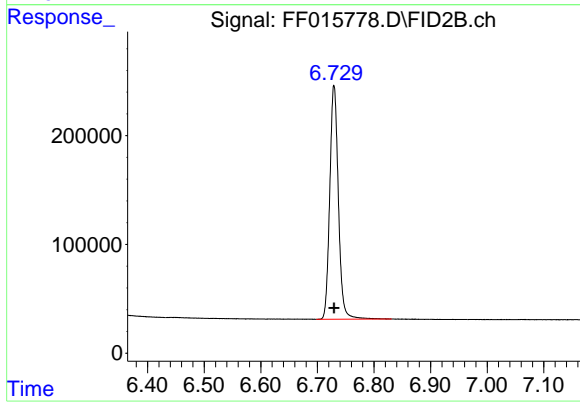
Instrument : FID_F
 ClientSampleId : 20 PPM ALIPHATIC HC STD3



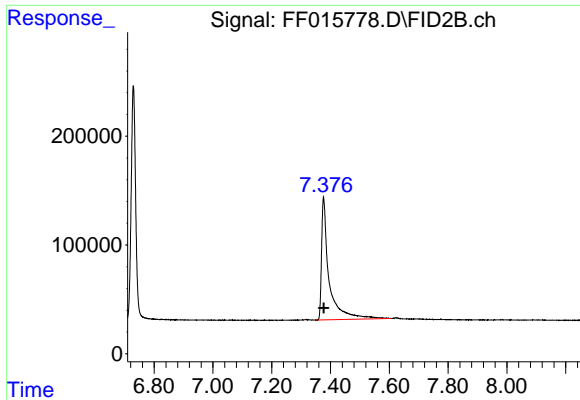
#2 n-Decane (C10)
 R.T.: 4.563 min
 Delta R.T.: 0.000 min
 Response: 2221946
 Conc: 20.00 ug/ml



#3 A~Naphthalene (C11.7)
 R.T.: 6.278 min
 Delta R.T.: 0.000 min
 Response: 2191888
 Conc: 20.00 ug/ml



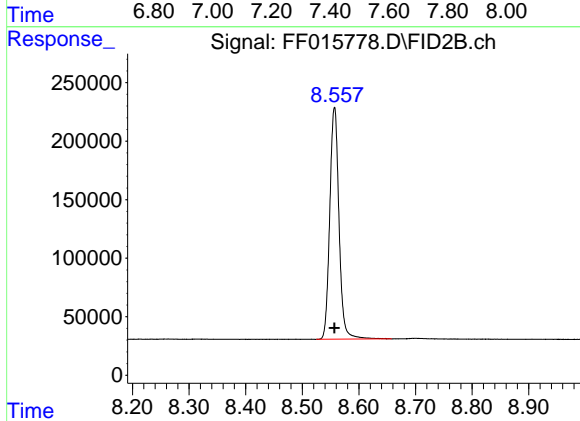
#4 n-Dodecane (C12)
 R.T.: 6.730 min
 Delta R.T.: 0.000 min
 Response: 2271830
 Conc: 20.00 ug/ml



#5 A~2-methylnaphthalene (C12.89)

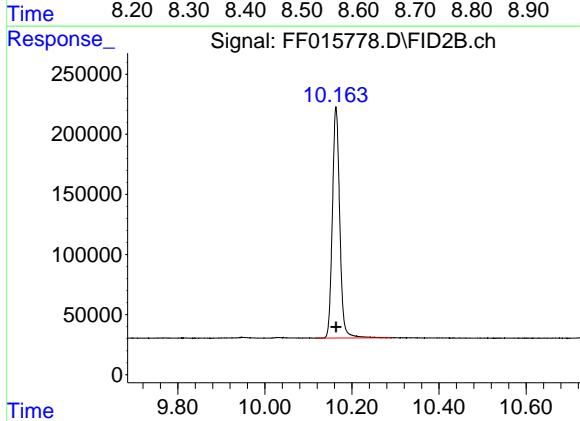
R.T.: 7.377 min
 Delta R.T.: 0.000 min
 Response: 2015278
 Conc: 20.00 ug/ml

Instrument : FID_F
 ClientSampleId : 20 PPM ALIPHATIC HC STD3



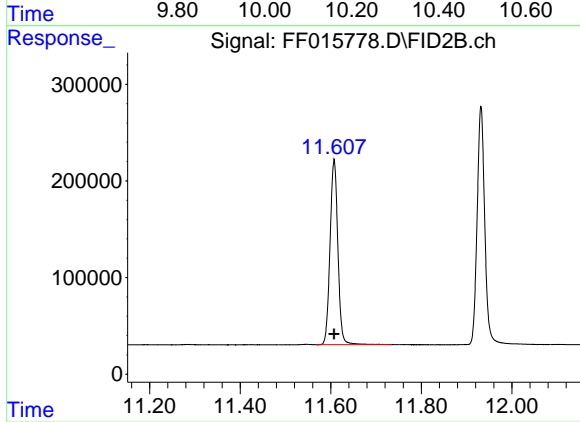
#6 n-Tetradecane (C14)

R.T.: 8.557 min
 Delta R.T.: 0.000 min
 Response: 2248457
 Conc: 20.00 ug/ml



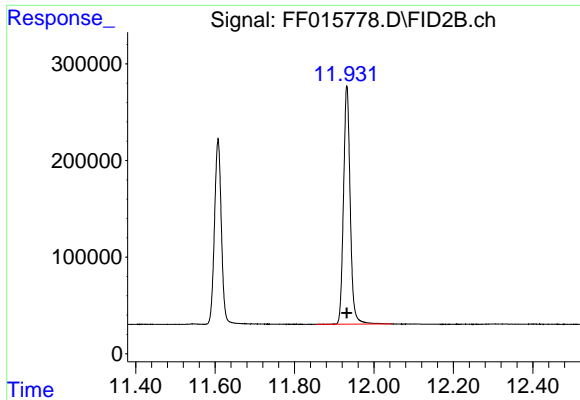
#7 n-Hexadecane (C16)

R.T.: 10.164 min
 Delta R.T.: 0.000 min
 Response: 2253429
 Conc: 20.00 ug/ml



#8 n-Octadecane (C18)

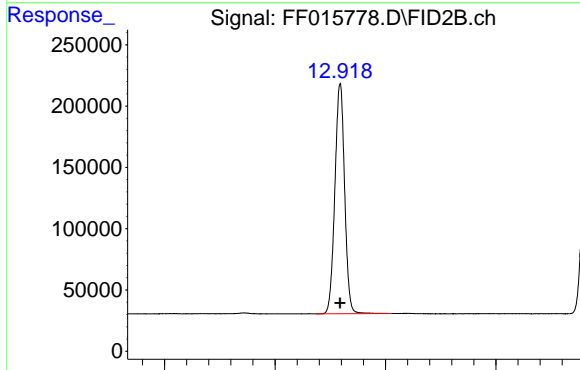
R.T.: 11.607 min
 Delta R.T.: 0.000 min
 Response: 2295225
 Conc: 20.00 ug/ml



#9 ortho-Terphenyl (SURR)

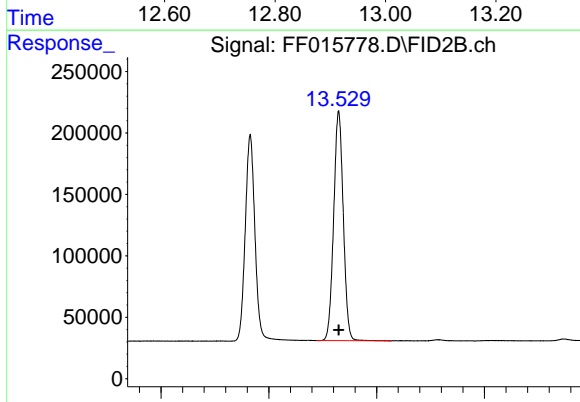
R.T.: 11.932 min
 Delta R.T.: 0.000 min
 Response: 2888360
 Conc: 20.00 ug/ml

Instrument : FID_F
 ClientSampleId : 20 PPM ALIPHATIC HC STD3



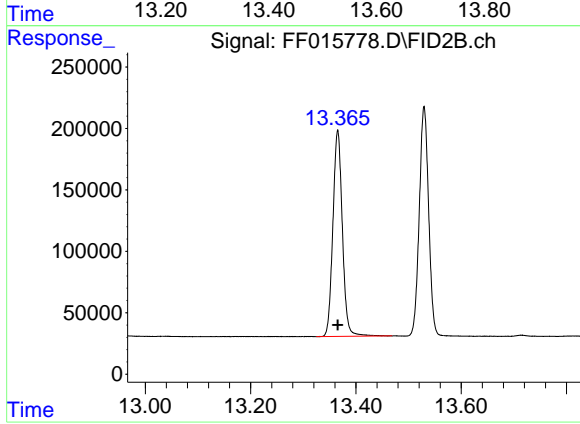
#10 n-Eicosane (C20)

R.T.: 12.918 min
 Delta R.T.: 0.000 min
 Response: 2304454
 Conc: 20.00 ug/ml



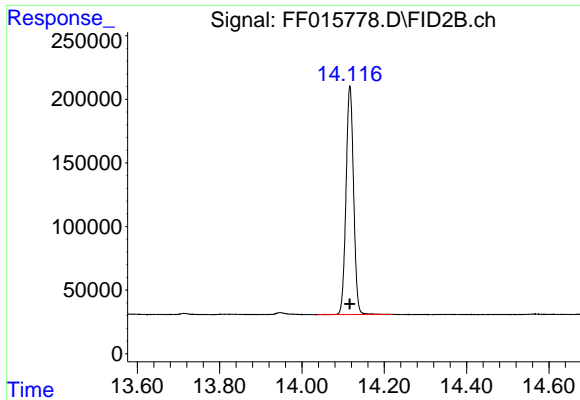
#11 n-Heneicosane (C21)

R.T.: 13.530 min
 Delta R.T.: 0.000 min
 Response: 2308287
 Conc: 20.00 ug/ml



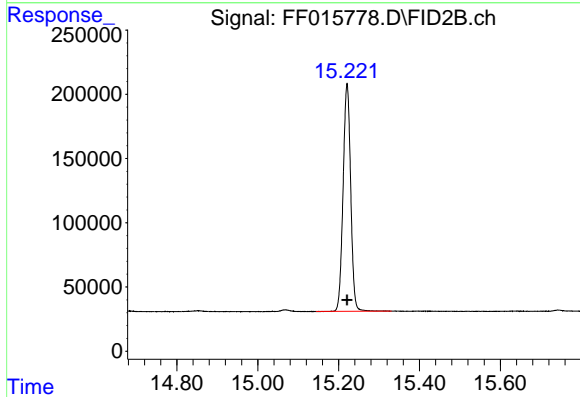
#12 1-chlorooctadecane (SURR)

R.T.: 13.365 min
 Delta R.T.: 0.000 min
 Response: 2095422
 Conc: 20.00 ug/ml

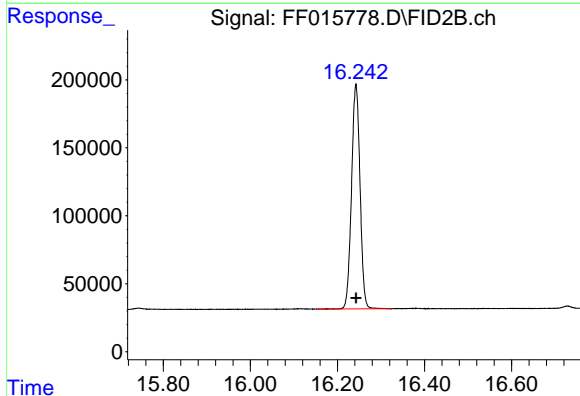


#13 n-Docosane (C22)
R.T.: 14.117 min
Delta R.T.: 0.000 min
Response: 2292807
Conc: 20.00 ug/ml

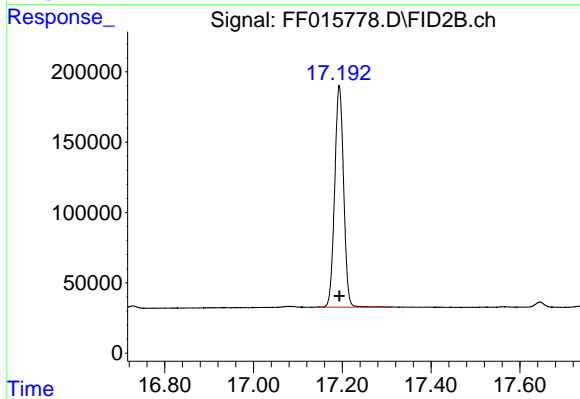
Instrument : FID_F
ClientSampleId : 20 PPM ALIPHATIC HC STD3



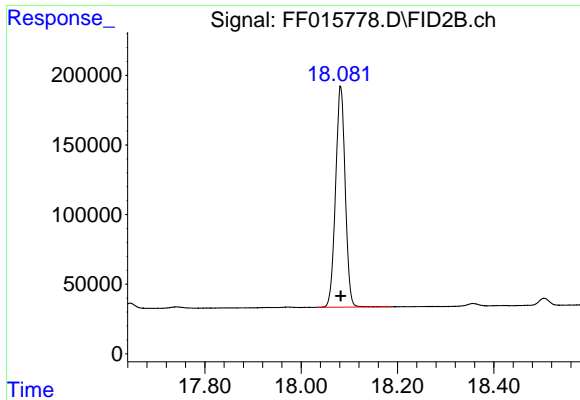
#14 n-Tetracosane (C24)
R.T.: 15.221 min
Delta R.T.: 0.000 min
Response: 2309451
Conc: 20.00 ug/ml



#15 n-Hexacosane (C26)
R.T.: 16.243 min
Delta R.T.: 0.000 min
Response: 2232641
Conc: 20.00 ug/ml

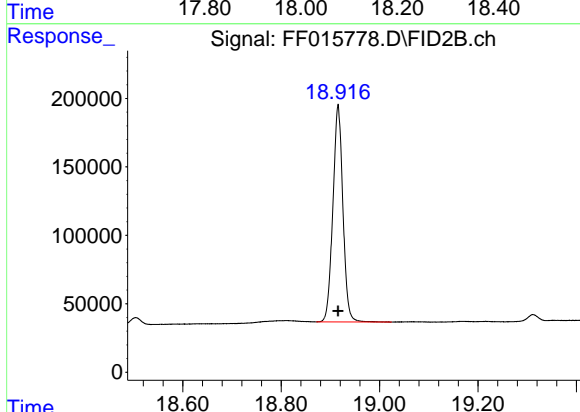


#16 n-Octacosane (C28)
R.T.: 17.193 min
Delta R.T.: 0.000 min
Response: 2202832
Conc: 20.00 ug/ml

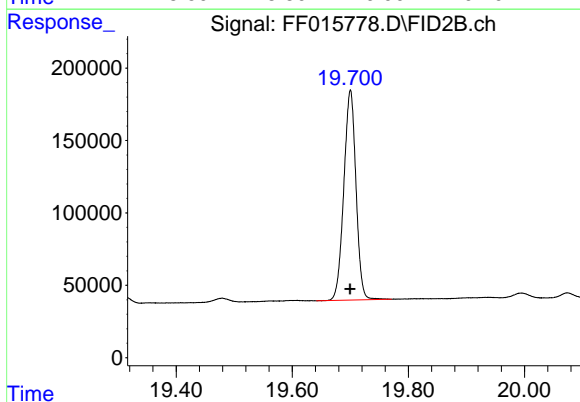


#17 n-Tricontane (C30)
 R.T.: 18.082 min
 Delta R.T.: 0.000 min
 Response: 2210617
 Conc: 20.00 ug/ml

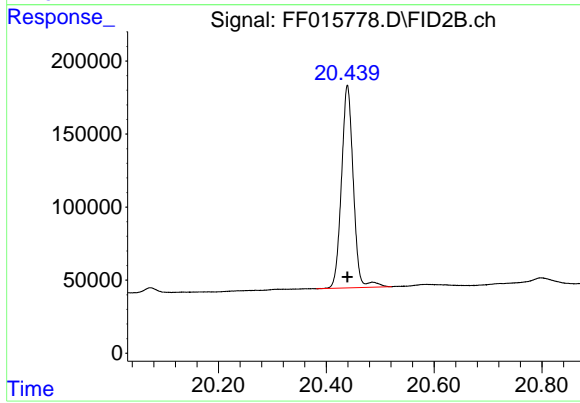
Instrument : FID_F
 ClientSampleId : 20 PPM ALIPHATIC HC STD3



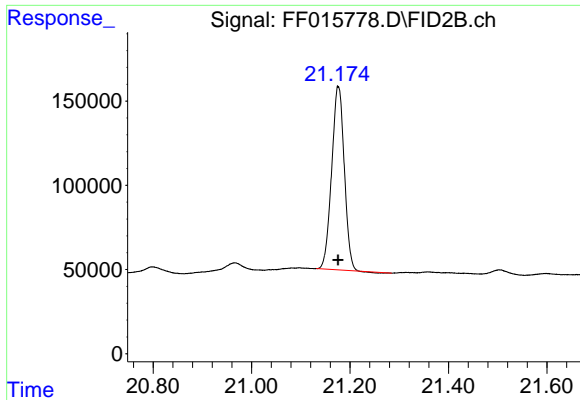
#18 n-Dotriacontane (C32)
 R.T.: 18.916 min
 Delta R.T.: 0.000 min
 Response: 2236855
 Conc: 20.00 ug/ml



#19 n-Tetratriacontane (C34)
 R.T.: 19.700 min
 Delta R.T.: 0.000 min
 Response: 2104549
 Conc: 20.00 ug/ml



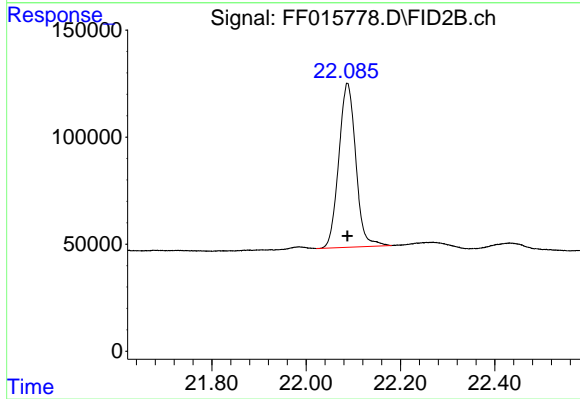
#20 n-Hexatriacontane (C36)
 R.T.: 20.439 min
 Delta R.T.: 0.000 min
 Response: 2108779
 Conc: 20.00 ug/ml



#21 n-Octatriacontane (C38)

R.T.: 21.176 min
Delta R.T.: 0.000 min
Response: 1934276
Conc: 20.00 ug/ml

Instrument :
FID_F
ClientSampleId :
20 PPM ALIPHATIC HC STD3



#22 n-Tetracontane (C40)

R.T.: 22.088 min
Delta R.T.: 0.000 min
Response: 1910959
Conc: 20.00 ug/ml