

Data Path : Z:\pestpcbsrv\HPCHEM1\FID\_F\Data\FF050422AL\  
 Data File : FF010535.D  
 Signal(s) : FID2B.ch  
 Acq On : 04 May 2022 23:59  
 Operator : AJ\MA  
 Sample : PB144566BS  
 Misc :  
 ALS Vial : 70 Sample Multiplier: 1

Instrument :  
 FID\_F  
 ClientSampleId :  
 PB144566BS

Manual Integrations  
 APPROVED

Reviewed By :Yogesh Patel 05/05/2022  
 Supervised By :mohammad ahmed 05/06/2022

Integration File: sample.E  
 Quant Time: May 05 01:24:49 2022  
 Quant Method : Z:\pestpcbsrv\HPCHEM1\FID\_F\Method\Aliphatic EPH -FF050322  
 Quant Title : GC Extractables  
 QLast Update : Tue May 03 13:18:42 2022  
 Response via : Initial Calibration  
 Integrator: ChemStation

Volume Inj. : 1 ul  
 Signal Phase : Rxi-1ms  
 Signal Info : 20M x 0.18mm x 0.18um

Compound	R.T.	Response	Conc Units
-----			
System Monitoring Compounds			
12) S 1-chlorooctadecane (S... Spiked Amount 50.000	12.287	2955374 Recovery =	27.175 ug/ml 54.35%
Target Compounds			
1) T n-Nonane (C9)	2.714	2318534	19.593 ug/ml
2) T n-Decane (C10)	3.721	2887763	24.591 ug/ml
4) T n-Dodecane (C12)	5.707	3262331	27.166 ug/ml
6) T n-Tetradecane (C14)	7.497	3443148	28.533 ug/ml
7) T n-Hexadecane (C16)	9.096	3845243	31.255 ug/ml
8) T n-Octadecane (C18)	10.536	4284264	34.140 ug/ml
10) T n-Eicosane (C20)	11.844	4259491	33.956 ug/ml
11) T n-Heneicosane (C21)	12.455	4274866	33.959 ug/ml
13) T n-Docosane (C22)	13.040	4238819	33.887 ug/ml
14) T n-Tetracosane (C24)	14.142	4174452	33.910 ug/ml
15) T n-Hexacosane (C26)	15.162	4041654	33.969 ug/ml
16) T n-Octacosane (C28)	16.110	3804945	33.338 ug/ml
17) T n-Tricontane (C30)	16.995	3613330	33.136 ug/ml
18) T n-Dotriacontane (C32)	17.826	3476094	33.926 ug/ml
19) T n-Tetratriacontane (C34)	18.606	3017558	32.698 ug/ml
20) T n-Hexatriacontane (C36)	19.344	2649014	31.746 ug/ml
21) T n-Octatriacontane (C38)	20.062	2361134	31.719 ug/mlm
22) T n-Tetracontane (C40)	20.934	2152592	28.795 ug/ml
-----			

(f)=RT Delta > 1/2 Window

(m)=manual int.

Data Path : Z:\pestpcbsrv\HPCHEM1\FID\_F\Data\FF050422AL\  
 Data File : FF010535.D  
 Signal(s) : FID2B.ch  
 Acq On : 04 May 2022 23:59  
 Operator : AJ\MA  
 Sample : PB144566BS  
 Misc :  
 ALS Vial : 70 Sample Multiplier: 1

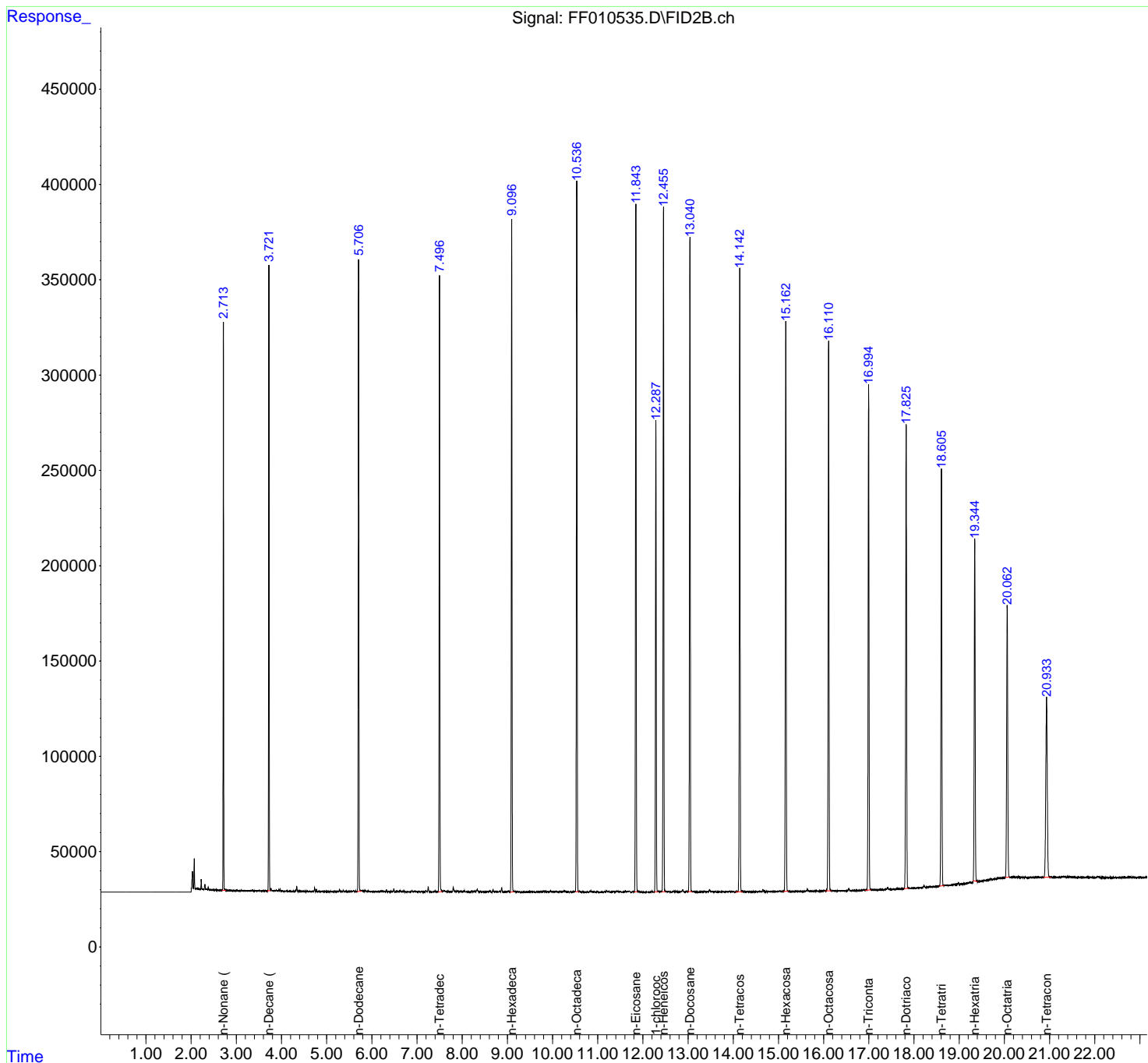
**Instrument :**  
 FID\_F  
**ClientSampleId :**  
 PB144566BS

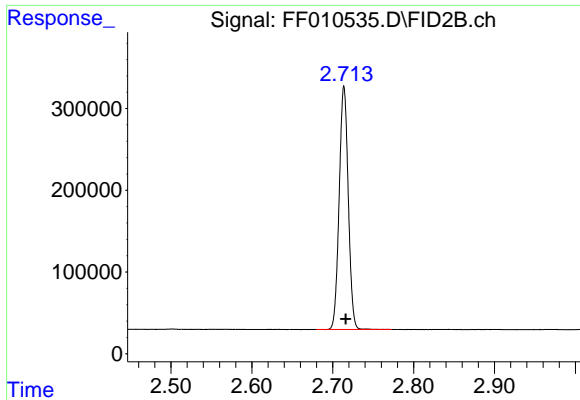
**Manual Integrations**  
**APPROVED**

Reviewed By :Yogesh Patel 05/05/2022  
 Supervised By :mohammad ahmed 05/06/2022

Integration File: sample.E  
 Quant Time: May 05 01:24:49 2022  
 Quant Method : Z:\pestpcbsrv\HPCHEM1\FID\_F\Method\Aliphatic EPH -FF050322.M  
 Quant Title : GC Extractables  
 QLast Update : Tue May 03 13:18:42 2022  
 Response via : Initial Calibration  
 Integrator: ChemStation

Volume Inj. : 1 ul  
 Signal Phase : Rxi-1ms  
 Signal Info : 20M x 0.18mm x 0.18um





#1 n-Nonane (C9)

R.T.: 2.714 min  
 Delta R.T.: -0.002 min  
 Response: 2318534  
 Conc: 19.59 ug/ml

Instrument :

FID\_F

ClientSampleId :

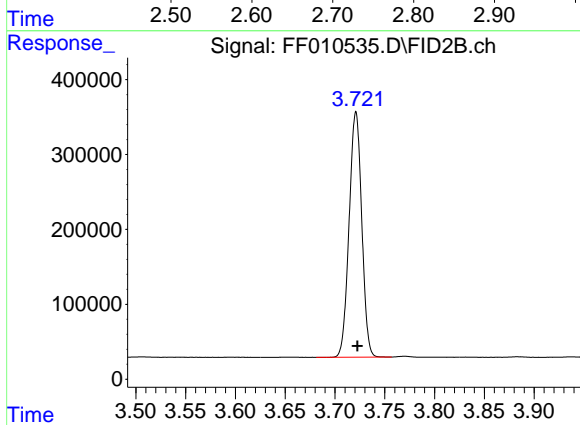
PB144566BS

Manual Integrations

APPROVED

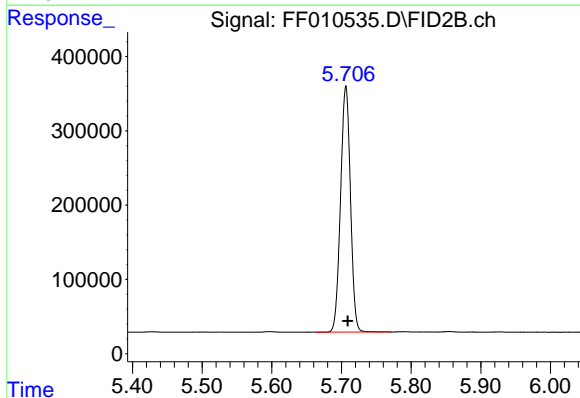
Reviewed By :Yogesh Patel 05/05/2022

Supervised By :mohammad ahmed 05/06/2022



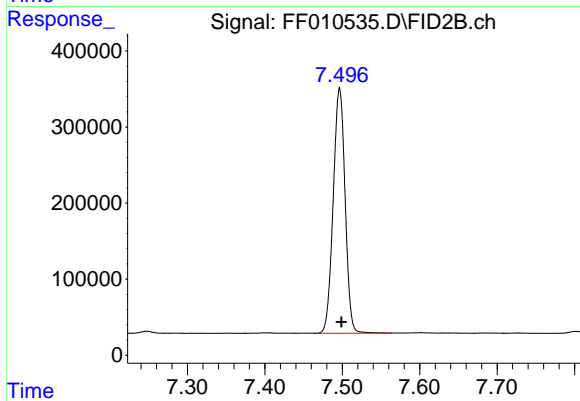
#2 n-Decane (C10)

R.T.: 3.721 min  
 Delta R.T.: -0.002 min  
 Response: 2887763  
 Conc: 24.59 ug/ml



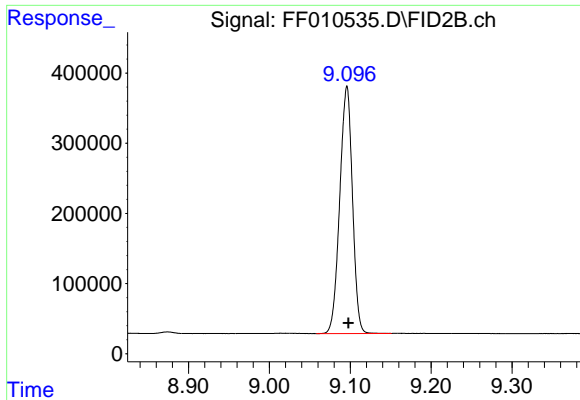
#4 n-Dodecane (C12)

R.T.: 5.707 min  
 Delta R.T.: -0.002 min  
 Response: 3262331  
 Conc: 27.17 ug/ml



#6 n-Tetradecane (C14)

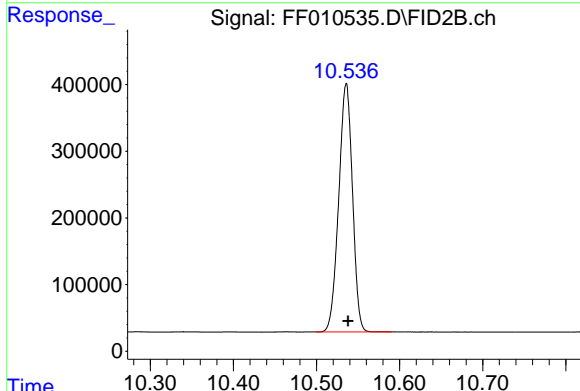
R.T.: 7.497 min  
 Delta R.T.: -0.002 min  
 Response: 3443148  
 Conc: 28.53 ug/ml



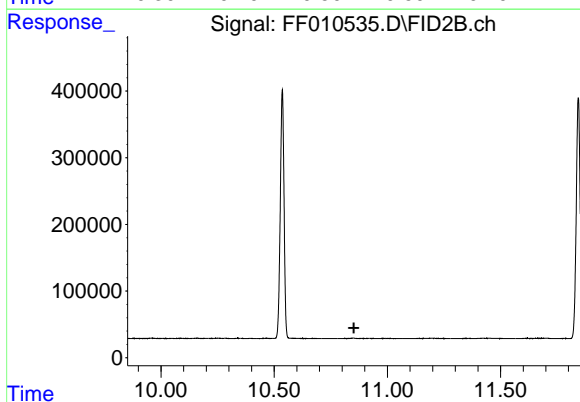
#7 n-Hexadecane (C16)  
 R.T.: 9.096 min  
 Delta R.T.: -0.002 min  
 Response: 3845243  
 Conc: 31.25 ug/ml

Instrument : FID\_F  
 Client Sample Id : PB144566BS

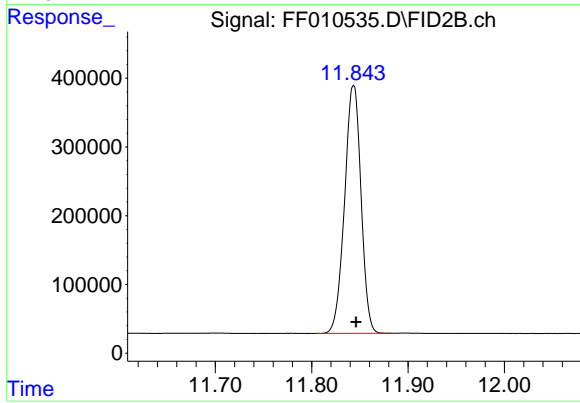
**Manual Integrations**  
**APPROVED**  
 Reviewed By :Yogesh Patel 05/05/2022  
 Supervised By :mohammad ahmed 05/06/2022



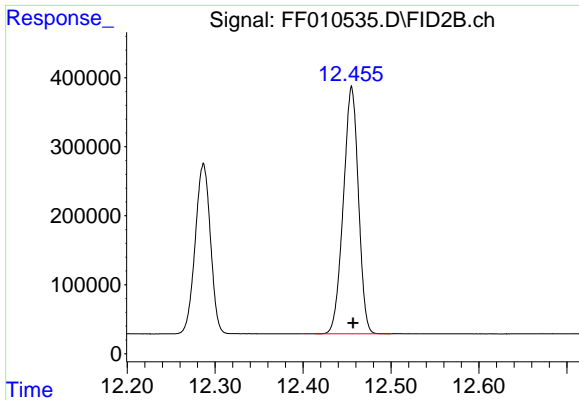
#8 n-Octadecane (C18)  
 R.T.: 10.536 min  
 Delta R.T.: -0.002 min  
 Response: 4284264  
 Conc: 34.14 ug/ml



#9 ortho-Terphenyl (SURRE)  
 R.T.: 0.000 min  
 Exp R.T. : 10.852 min  
 Response: 0  
 Conc: N.D.



#10 n-Eicosane (C20)  
 R.T.: 11.844 min  
 Delta R.T.: -0.003 min  
 Response: 4259491  
 Conc: 33.96 ug/ml



#11 n-Heneicosane (C21)

R.T.: 12.455 min  
Delta R.T.: -0.002 min  
Response: 4274866  
Conc: 33.96 ug/ml

Instrument :

FID\_F

ClientSampleId :

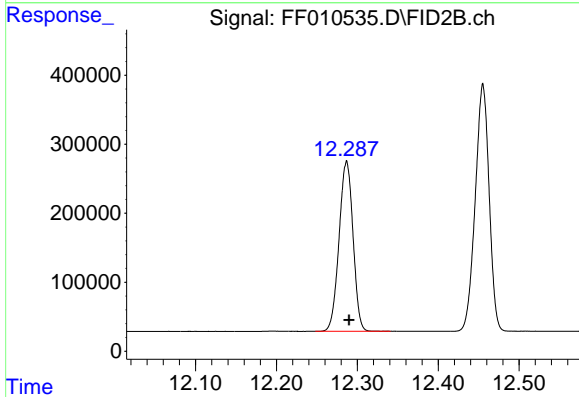
PB144566BS

Manual Integrations

APPROVED

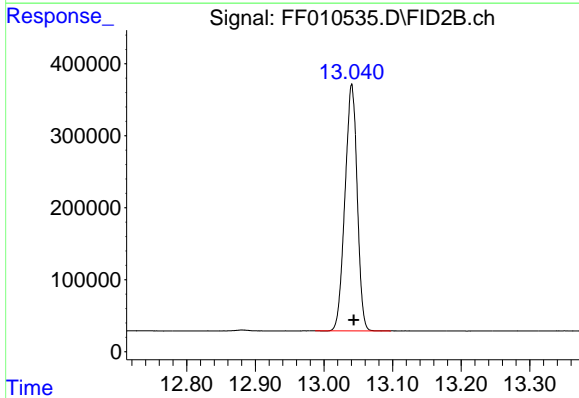
Reviewed By :Yogesh Patel 05/05/2022

Supervised By :mohammad ahmed 05/06/2022



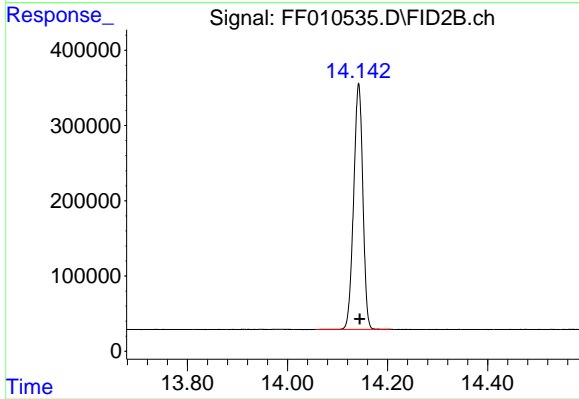
#12 1-chlorooctadecane (SURR)

R.T.: 12.287 min  
Delta R.T.: -0.003 min  
Response: 2955374  
Conc: 27.18 ug/ml



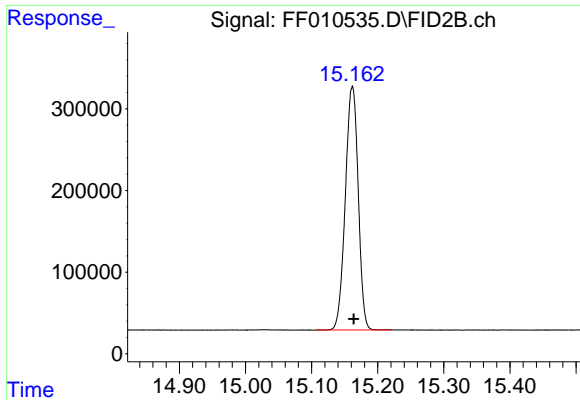
#13 n-Docosane (C22)

R.T.: 13.040 min  
Delta R.T.: -0.003 min  
Response: 4238819  
Conc: 33.89 ug/ml



#14 n-Tetracosane (C24)

R.T.: 14.142 min  
Delta R.T.: -0.002 min  
Response: 4174452  
Conc: 33.91 ug/ml



#15 n-Hexacosane (C26)

R.T.: 15.162 min  
 Delta R.T.: -0.002 min  
 Response: 4041654  
 Conc: 33.97 ug/ml

Instrument :

FID\_F

ClientSampleId :

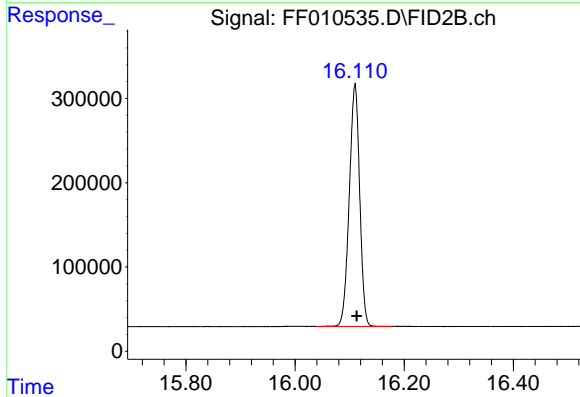
PB144566BS

Manual Integrations

APPROVED

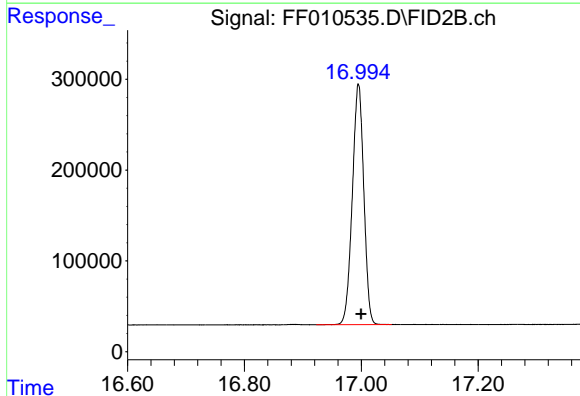
Reviewed By :Yogesh Patel 05/05/2022

Supervised By :mohammad ahmed 05/06/2022



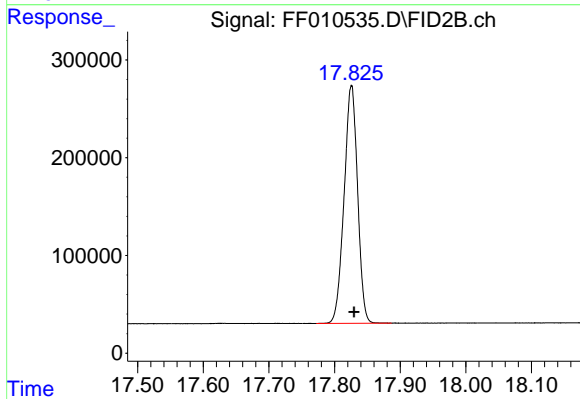
#16 n-Octacosane (C28)

R.T.: 16.110 min  
 Delta R.T.: -0.003 min  
 Response: 3804945  
 Conc: 33.34 ug/ml



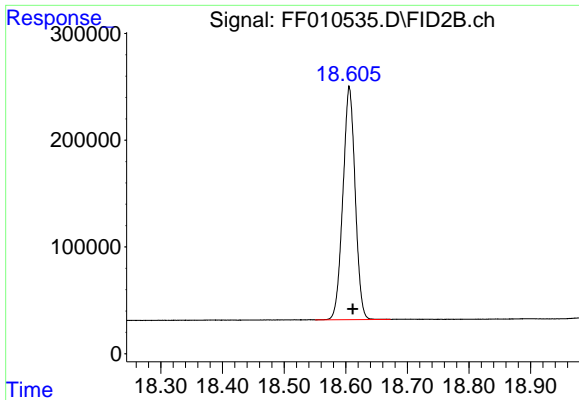
#17 n-Tricontane (C30)

R.T.: 16.995 min  
 Delta R.T.: -0.004 min  
 Response: 3613330  
 Conc: 33.14 ug/ml



#18 n-Dotriacontane (C32)

R.T.: 17.826 min  
 Delta R.T.: -0.004 min  
 Response: 3476094  
 Conc: 33.93 ug/ml



#19 n-Tetratriacontane (C34)

R.T.: 18.606 min  
 Delta R.T.: -0.005 min  
 Response: 3017558  
 Conc: 32.70 ug/ml

Instrument :

FID\_F

ClientSampleId :

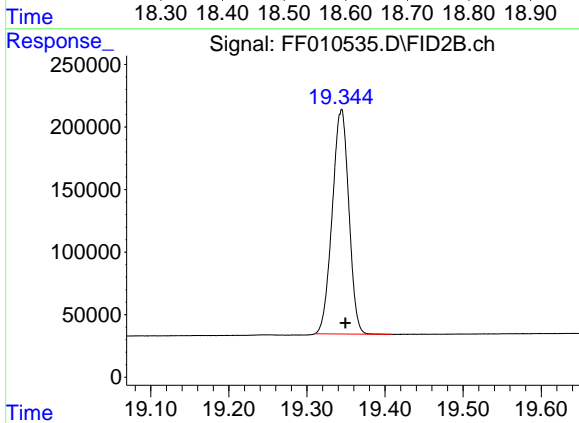
PB144566BS

Manual Integrations

APPROVED

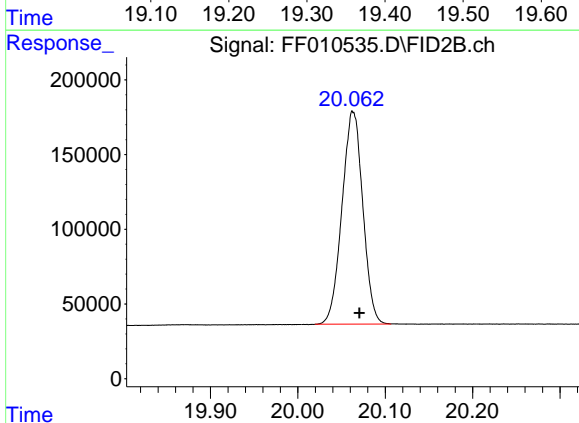
Reviewed By :Yogesh Patel 05/05/2022

Supervised By :mohammad ahmed 05/06/2022



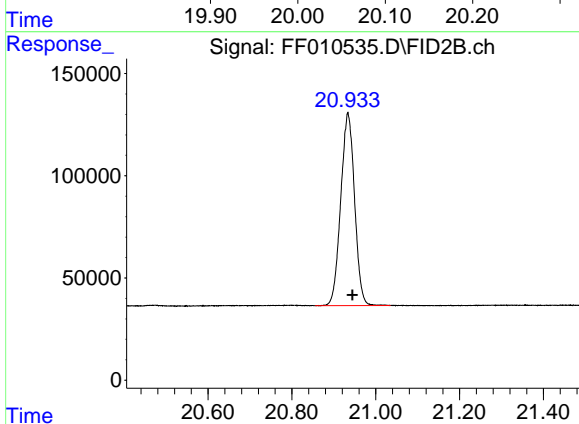
#20 n-Hexatriacontane (C36)

R.T.: 19.344 min  
 Delta R.T.: -0.005 min  
 Response: 2649014  
 Conc: 31.75 ug/ml



#21 n-Octatriacontane (C38)

R.T.: 20.062 min  
 Delta R.T.: -0.009 min  
 Response: 2361134  
 Conc: 31.72 ug/ml m



#22 n-Tetracontane (C40)

R.T.: 20.934 min  
 Delta R.T.: -0.011 min  
 Response: 2152592  
 Conc: 28.80 ug/ml