

Data Path : Z:\pestpcbsrv\HPCHEM1\FID\_F\Data\FF051424AR\  
 Data File : FF014250.D  
 Signal(s) : FID2B.ch  
 Acq On : 15 May 2024 03:49  
 Operator : YP\AJ  
 Sample : I.BLK  
 Misc :  
 ALS Vial : 51 Sample Multiplier: 1

Instrument :  
 FID\_F  
 ClientSampleId :

Integration File: autoint1.e  
 Quant Time: May 15 06:37:51 2024  
 Quant Method : Z:\pestpcbsrv\HPCHEM1\FID\_F\Method\Aromatic EPH 051424.M  
 Quant Title : GC Extractables  
 QLast Update : Tue May 14 17:31:50 2024  
 Response via : Initial Calibration  
 Integrator: ChemStation

Volume Inj. : 1 µl  
 Signal Phase : Rxi-1ms  
 Signal Info : 20M x 0.18mm x 0.18µm

Compound	R.T.	Response	Conc Units
----------	------	----------	------------

-----  
 System Monitoring Compounds

Target Compounds  
 -----

(f)=RT Delta > 1/2 Window

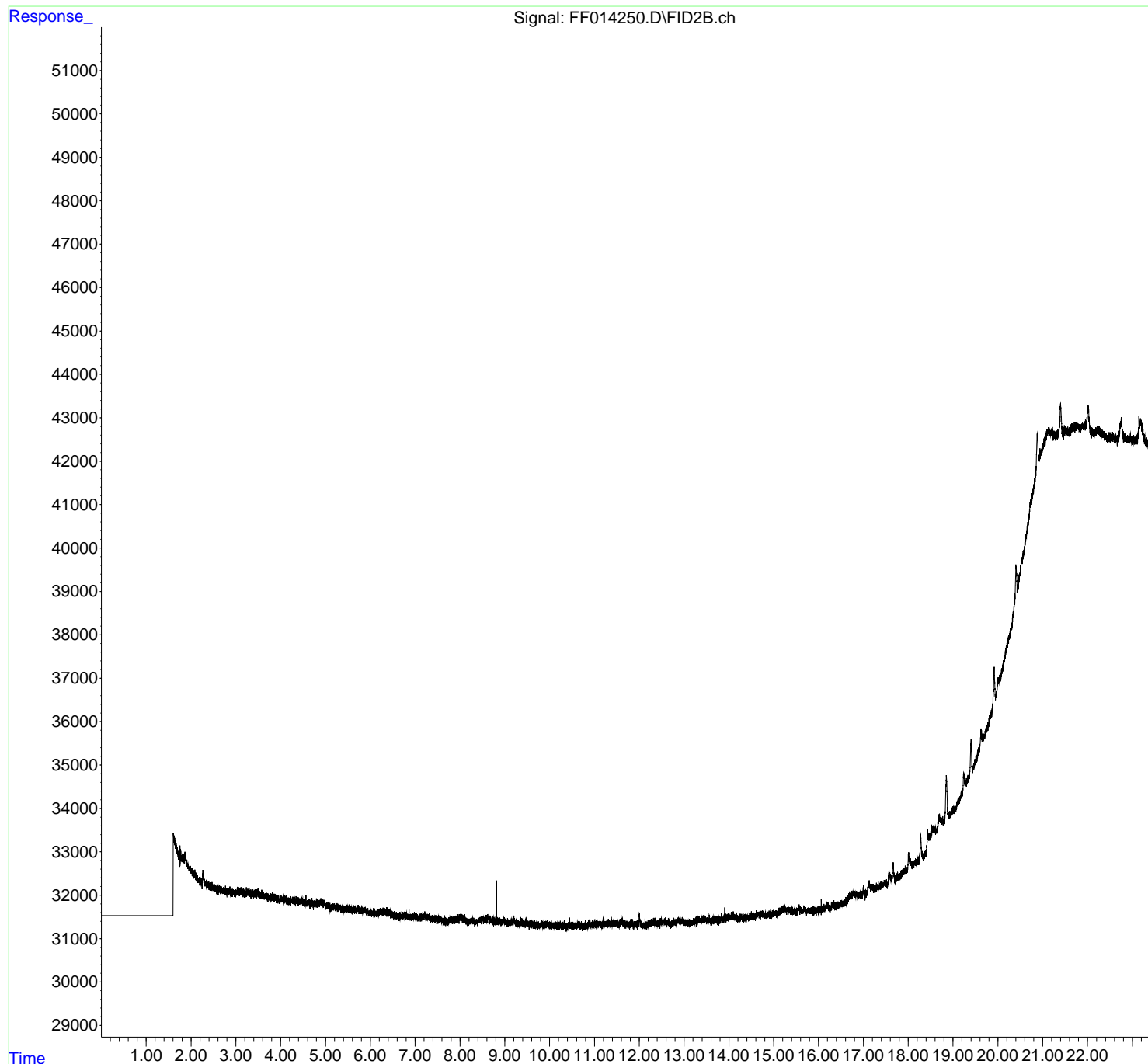
(m)=manual int.

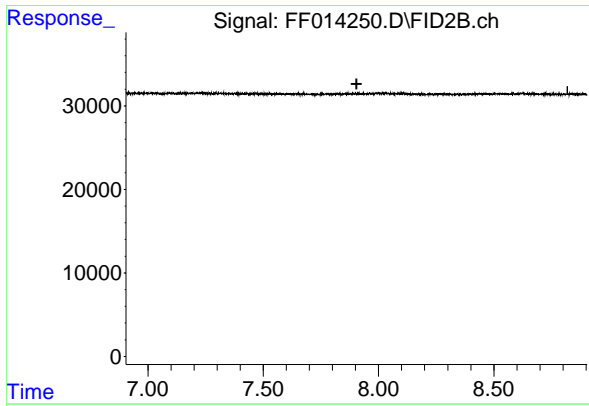
Data Path : Z:\pestpcbsrv\HPCHEM1\FID\_F\Data\FF051424AR\  
Data File : FF014250.D  
Signal(s) : FID2B.ch  
Acq On : 15 May 2024 03:49  
Operator : YP\AJ  
Sample : I.BLK  
Misc :  
ALS Vial : 51 Sample Multiplier: 1

Instrument :  
FID\_F  
ClientSampleId :

Integration File: autoint1.e  
Quant Time: May 15 06:37:51 2024  
Quant Method : Z:\pestpcbsrv\HPCHEM1\FID\_F\Method\Aromatic EPH 051424.M  
Quant Title : GC Extractables  
QLast Update : Tue May 14 17:31:50 2024  
Response via : Initial Calibration  
Integrator: ChemStation

Volume Inj. : 1  $\mu$ l  
Signal Phase : Rxi-1ms  
Signal Info : 20M x 0.18mm x 0.18 $\mu$ m

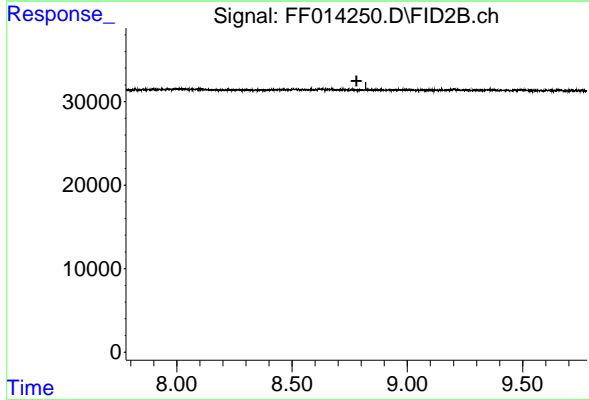




#4 2-Bromonaphthalene (SURR)

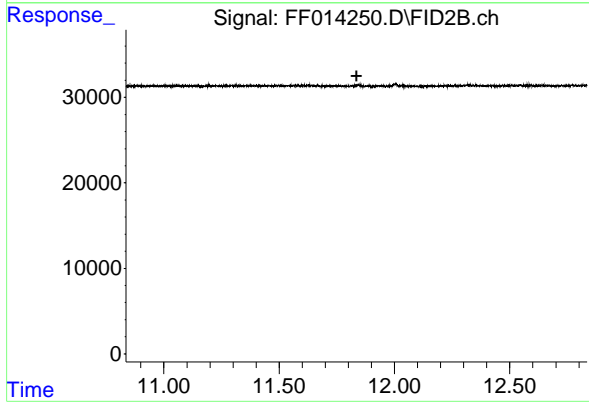
R.T.: 0.000 min  
Exp R.T. : 7.905 min  
Response: 0  
Conc: N.D.

Instrument :  
FID\_F  
ClientSampleId :



#6 2-Fluorobiphenyl (SURR)

R.T.: 0.000 min  
Exp R.T. : 8.780 min  
Response: 0  
Conc: N.D.



#11 ortho-Terphenyl (SURR)

R.T.: 0.000 min  
Exp R.T. : 11.836 min  
Response: 0  
Conc: N.D.