

Data Path : Z:\pestpcbsrv\HPCHEM1\FID\_F\Data\FF061625AR\  
Data File : FF015990.D  
Signal(s) : FID2B.ch  
Acq On : 16 Jun 2025 09:20  
Operator : YP\AJ  
Sample : MECL2  
Misc :  
ALS Vial : 51 Sample Multiplier: 1

Instrument :  
FID\_F  
ClientSampleId :  
MECL2

Integration File: autoint1.e  
Quant Time: Jun 17 02:44:23 2025  
Quant Method : Z:\pestpcbsrv\HPCHEM1\FID\_F\Method\Aromatic EPH 061325.M  
Quant Title : GC Extractables  
QLast Update : Mon Jun 16 04:40:28 2025  
Response via : Initial Calibration  
Integrator: ChemStation

Volume Inj. : 1 µl  
Signal Phase : Rxi-1ms  
Signal Info : 20M x 0.18mm x 0.18µm

Compound	R.T.	Response	Conc Units
-----			
System Monitoring Compounds			
Target Compounds			
-----			

(f)=RT Delta > 1/2 Window

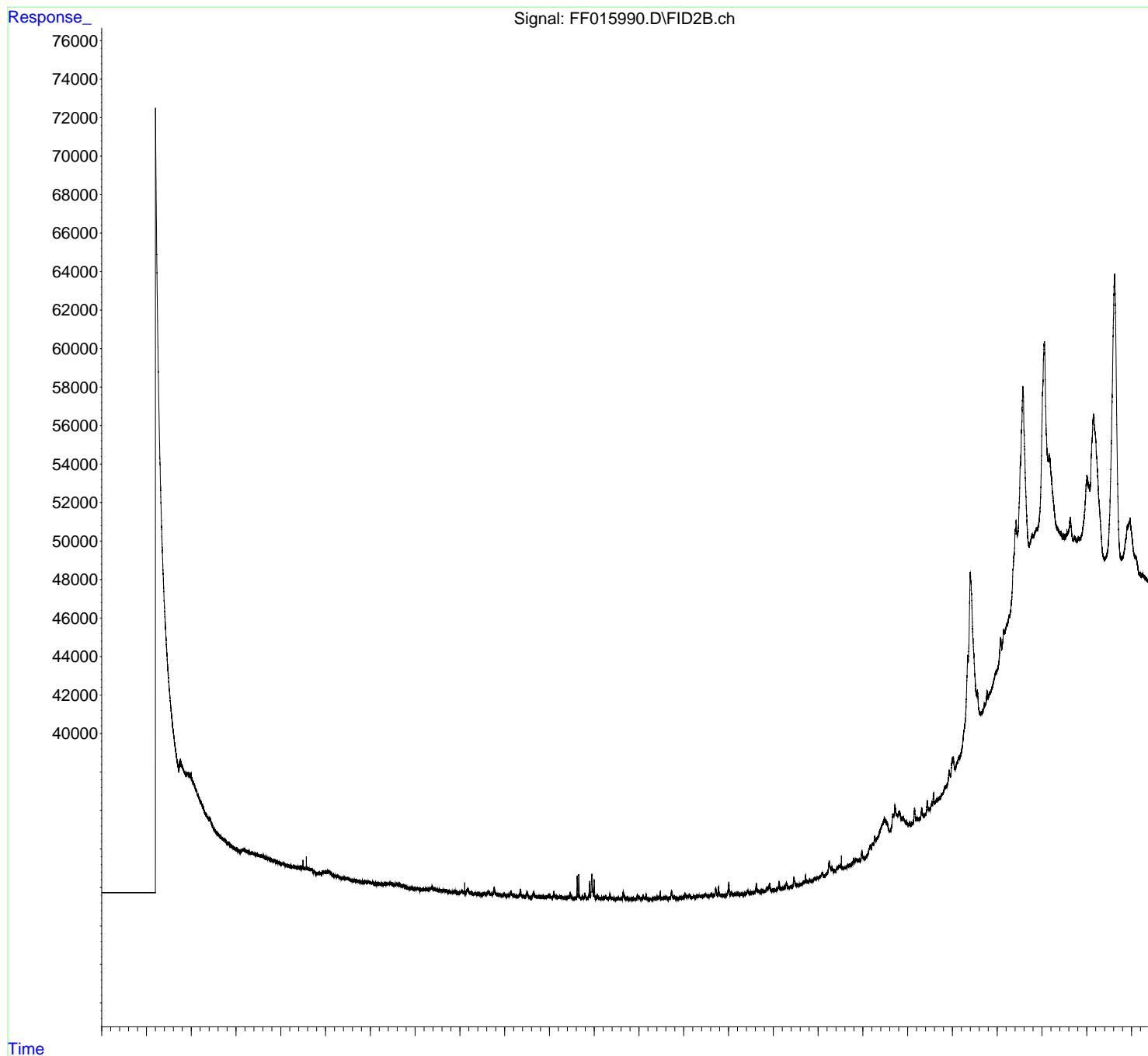
(m)=manual int.

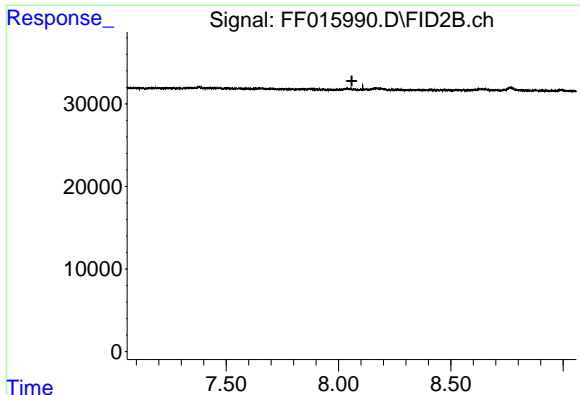
Data Path : Z:\pestpcbsrv\HPCHEM1\FID\_F\Data\FF061625AR\  
Data File : FF015990.D  
Signal(s) : FID2B.ch  
Acq On : 16 Jun 2025 09:20  
Operator : YP\AJ  
Sample : MECL2  
Misc :  
ALS Vial : 51 Sample Multiplier: 1

Instrument :  
FID\_F  
ClientSampleId :  
MECL2

Integration File: autoint1.e  
Quant Time: Jun 17 02:44:23 2025  
Quant Method : Z:\pestpcbsrv\HPCHEM1\FID\_F\Method\Aromatic EPH 061325.M  
Quant Title : GC Extractables  
QLast Update : Mon Jun 16 04:40:28 2025  
Response via : Initial Calibration  
Integrator: ChemStation

Volume Inj. : 1  $\mu$ l  
Signal Phase : Rxi-1ms  
Signal Info : 20M x 0.18mm x 0.18 $\mu$ m

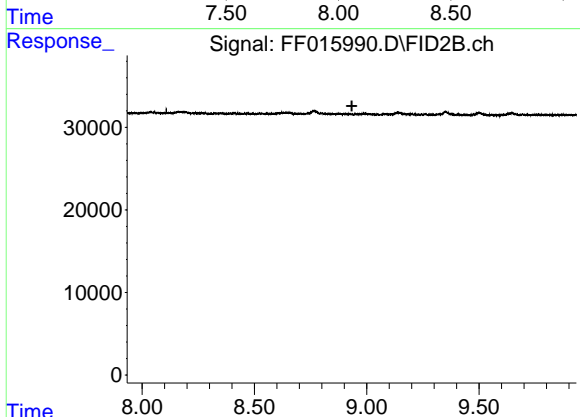




#4 2-Bromonaphthalene (SURR)

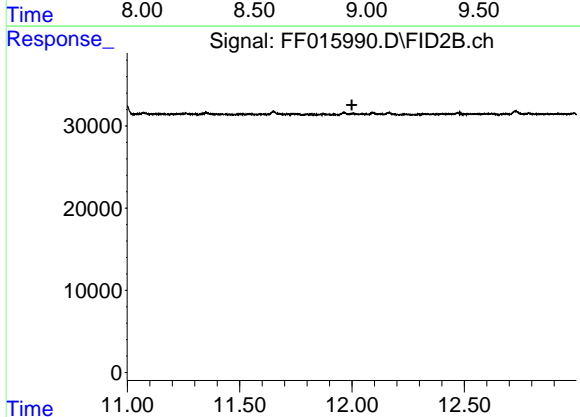
R.T.: 0.000 min  
 Exp R.T. : 8.059 min  
 Response: 0  
 Conc: N.D.

Instrument :  
 FID\_F  
 ClientSampleId :  
 MECL2



#6 2-Fluorobiphenyl (SURR)

R.T.: 0.000 min  
 Exp R.T. : 8.933 min  
 Response: 0  
 Conc: N.D.



#11 ortho-Terphenyl (SURR)

R.T.: 0.000 min  
 Exp R.T. : 11.999 min  
 Response: 0  
 Conc: N.D.