

Data Path : Z:\pestpcbsrv\HPCHEM1\FID_F\Data\FF062323AL\
 Data File : FF012992.D
 Signal(s) : FID2B.ch
 Acq On : 24 Jun 2023 00:43
 Operator : YP\AJ
 Sample : I.BLK
 Misc :
 ALS Vial : 51 Sample Multiplier: 1

Instrument :
 FID_F
 ClientSampleId :

Integration File: autoint1.e
 Quant Time: Jun 24 04:07:53 2023
 Quant Method : Z:\pestpcbsrv\HPCHEM1\FID_F\Method\Aliphatic EPH 062023.M
 Quant Title : GC Extractables
 QLast Update : Tue Jun 20 13:45:06 2023
 Response via : Initial Calibration
 Integrator: ChemStation

Volume Inj. : 1 ul
 Signal Phase : Rxi-1ms
 Signal Info : 20M x 0.18mm x 0.18um

Compound	R.T.	Response	Conc Units

System Monitoring Compounds			
Target Compounds			
14) T n-Tetracosane (C24)	14.143	44092	0.359 ug/ml
17) T n-Tricontane (C30)	17.011	22927	0.193 ug/ml
18) T n-Dotriacontane (C32)	17.841	47736	0.408 ug/ml
19) T n-Tetratriacontane (C34)	18.624	29894	0.269 ug/ml

(f)=RT Delta > 1/2 Window

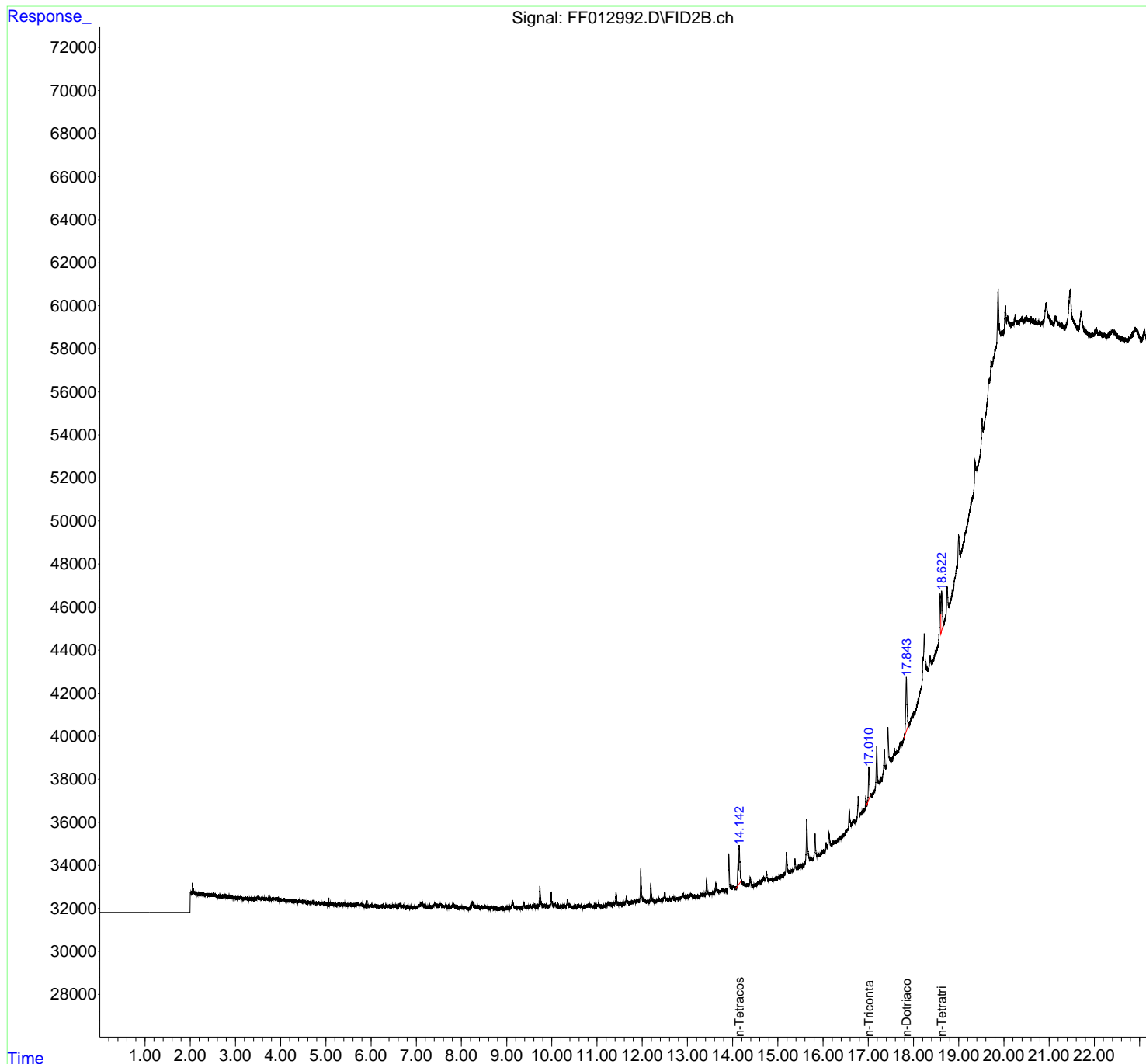
(m)=manual int.

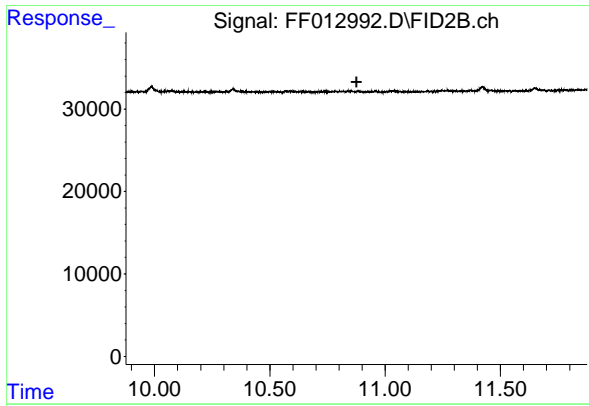
Data Path : Z:\pestpcbsrv\HPCHEM1\FID_F\Data\FF062323AL\
 Data File : FF012992.D
 Signal(s) : FID2B.ch
 Acq On : 24 Jun 2023 00:43
 Operator : YP\AJ
 Sample : I.BLK
 Misc :
 ALS Vial : 51 Sample Multiplier: 1

Instrument :
 FID_F
 ClientSampleId :

Integration File: autoint1.e
 Quant Time: Jun 24 04:07:53 2023
 Quant Method : Z:\pestpcbsrv\HPCHEM1\FID_F\Method\Aliphatic EPH 062023.M
 Quant Title : GC Extractables
 QLast Update : Tue Jun 20 13:45:06 2023
 Response via : Initial Calibration
 Integrator: ChemStation

Volume Inj. : 1 ul
 Signal Phase : Rxi-1ms
 Signal Info : 20M x 0.18mm x 0.18um

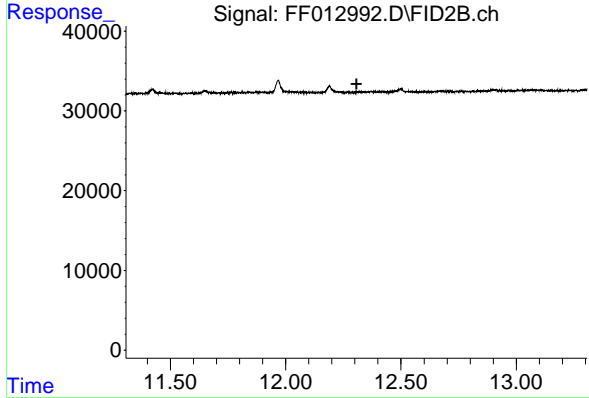




#9 ortho-Terphenyl (SURR)

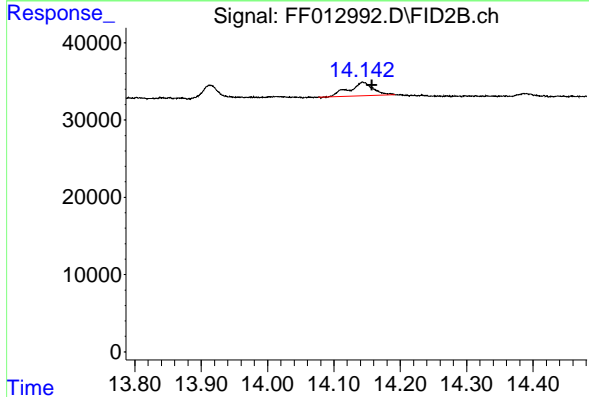
R.T.: 0.000 min
 Exp R.T.: 10.876 min
 Response: 0
 Conc: N.D.

Instrument : FID_F
 ClientSampleId :



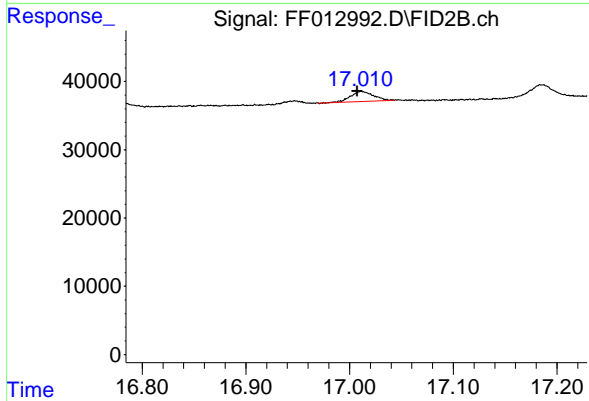
#12 1-chlorooctadecane (SURR)

R.T.: 0.000 min
 Exp R.T.: 12.307 min
 Response: 0
 Conc: N.D.



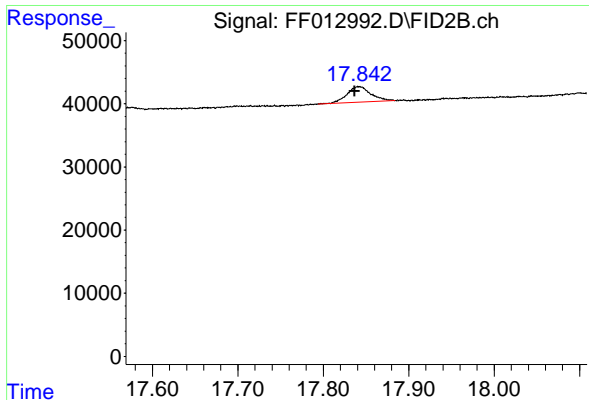
#14 n-Tetracosane (C24)

R.T.: 14.143 min
 Delta R.T.: -0.014 min
 Response: 44092
 Conc: 0.36 ug/ml



#17 n-Tricontane (C30)

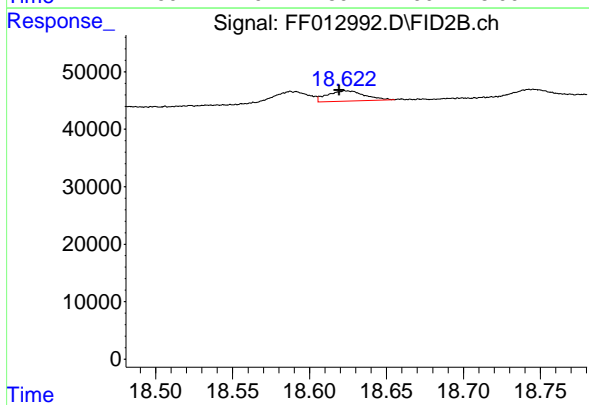
R.T.: 17.011 min
 Delta R.T.: 0.004 min
 Response: 22927
 Conc: 0.19 ug/ml



#18 n-Dotriacontane (C32)

R.T.: 17.841 min
Delta R.T.: 0.005 min
Response: 47736
Conc: 0.41 ug/ml

Instrument :
FID_F
ClientSampleId :



#19 n-Tetratriacontane (C34)

R.T.: 18.624 min
Delta R.T.: 0.005 min
Response: 29894
Conc: 0.27 ug/ml