

Data Path : Z:\pestpcbsrv\HPCHEM1\FID\_F\Data\FF070124\  
 Data File : FF014290.D  
 Signal(s) : FID2B.ch  
 Acq On : 01 Jul 2024 09:34  
 Operator : YP\AJ  
 Sample : MECL2  
 Misc :  
 ALS Vial : 51 Sample Multiplier: 1

**Instrument :**  
 FID\_F  
**ClientSampleId :**  
 MECL2

Integration File: autoint1.e  
 Quant Time: Jul 01 13:27:00 2024  
 Quant Method : Z:\pestpcbsrv\HPCHEM1\FID\_F\Method\FF070124.M  
 Quant Title :  
 QLast Update : Mon Jul 01 13:22:28 2024  
 Response via : Initial Calibration  
 Integrator: ChemStation

Volume Inj. : 1uL  
 Signal Phase : Rxi-1ms  
 Signal Info : 20mx0.18mmx0.18um

Compound	R.T.	Response	Conc Units
----------	------	----------	------------

-----  
 System Monitoring Compounds

Target Compounds  
 -----

(f)=RT Delta > 1/2 Window

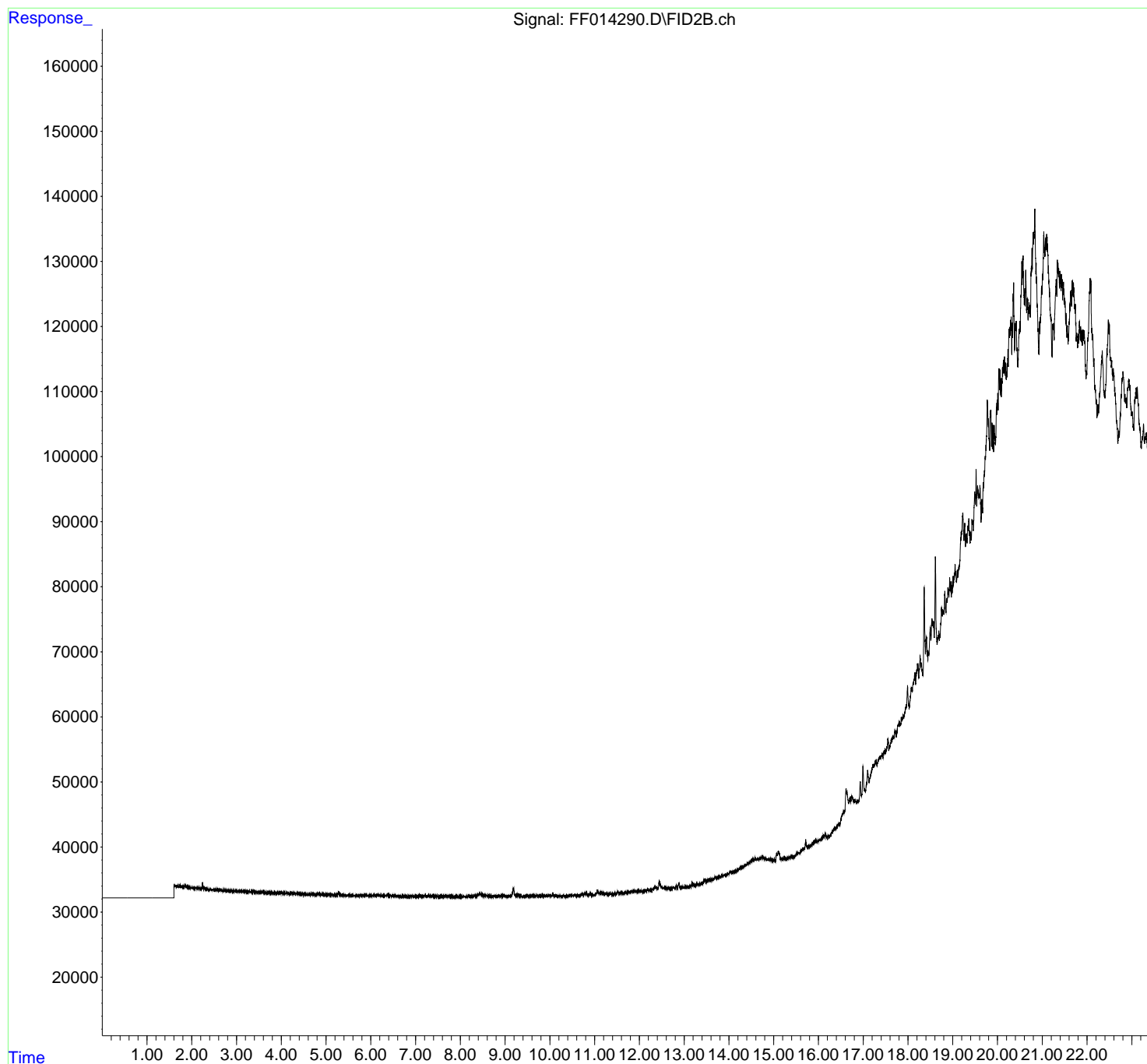
(m)=manual int.

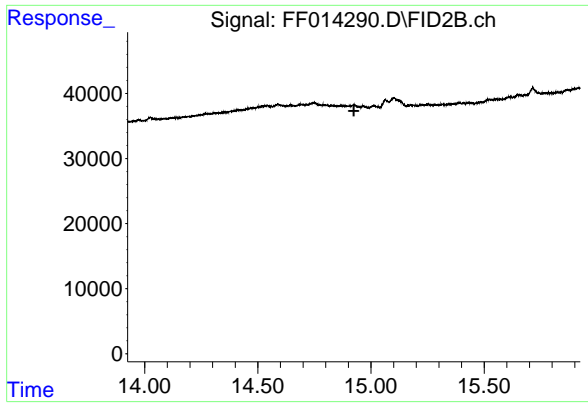
Data Path : Z:\pestpcbsrv\HPCHEM1\FID\_F\Data\FF070124\  
Data File : FF014290.D  
Signal(s) : FID2B.ch  
Acq On : 01 Jul 2024 09:34  
Operator : YP\AJ  
Sample : MECL2  
Misc :  
ALS Vial : 51 Sample Multiplier: 1

Instrument :  
FID\_F  
ClientSampleId :  
MECL2

Integration File: autoint1.e  
Quant Time: Jul 01 13:27:00 2024  
Quant Method : Z:\pestpcbsrv\HPCHEM1\FID\_F\Method\FF070124.M  
Quant Title :  
QLast Update : Mon Jul 01 13:22:28 2024  
Response via : Initial Calibration  
Integrator: ChemStation

Volume Inj. : 1uL  
Signal Phase : Rxi-1ms  
Signal Info : 20mx0.18mmx0.18um





#9 TETRACOSANE-d50 (SURROGATE)

R.T.: 0.000 min  
Exp R.T.: 14.925 min  
Response: 0  
Conc: N.D.

Instrument :  
FID\_F  
ClientSampleId :  
MECL2