

Data Path : Z:\pestpcbsrv\HPCHEM1\FID_F\Data\FF071425\
 Data File : FF016154.D
 Signal(s) : FID2B.ch
 Acq On : 14 Jul 2025 15:49
 Operator : YP\AJ
 Sample : PB168834BL
 Misc :
 ALS Vial : 73 Sample Multiplier: 1

Instrument :
 FID_F
ClientSampleId :
 PB168834BL

Integration File: autoint1.e
 Quant Time: Jul 15 00:48:09 2025
 Quant Method : Z:\pestpcbsrv\HPCHEM1\FID_F\Method\FF071025.M
 Quant Title :
 QLast Update : Thu Jul 10 12:51:11 2025
 Response via : Initial Calibration
 Integrator: ChemStation

Volume Inj. : 1uL
 Signal Phase : Rxi-1ms
 Signal Info : 20mx0.18mmx0.18um

Compound	R.T.	Response	Conc Units

System Monitoring Compounds			
9) S TETRACOSANE-d50 (SURR...	15.099	1859204	19.093 ug/ml
Target Compounds			
14) N-DOTRIACONTANE	19.047	68194	0.650 ug/ml
16) N-HEXATRIACONTANE	20.524	12433	0.149 ug/ml
18) N-TETRACONTANE	22.273	14739	0.217 ug/ml

(f)=RT Delta > 1/2 Window

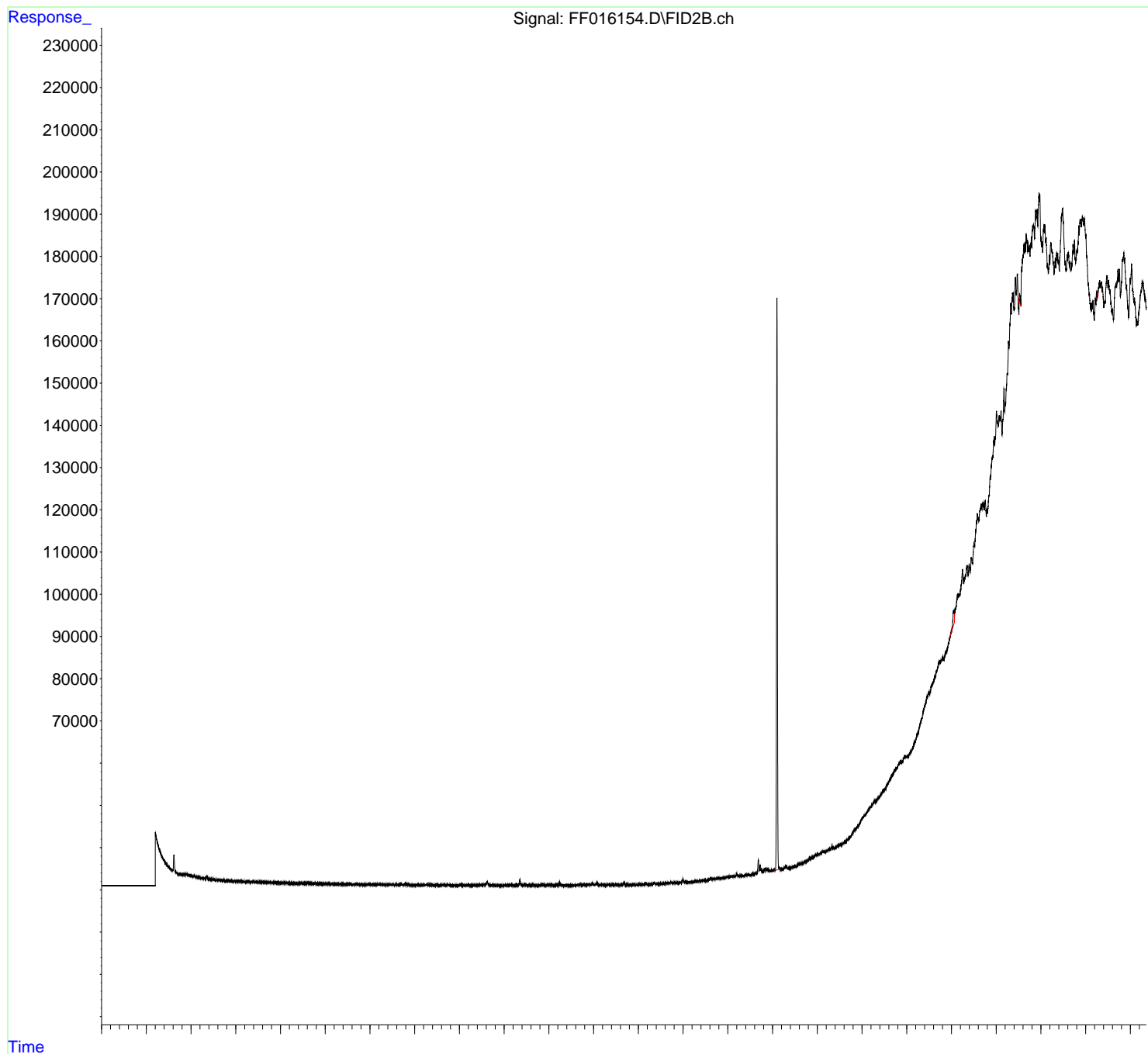
(m)=manual int.

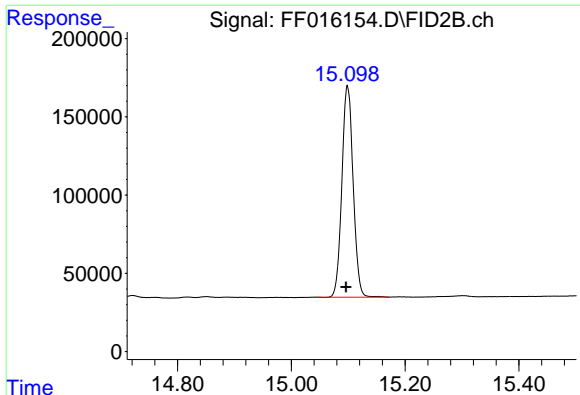
Data Path : Z:\pestpcbsrv\HPCHEM1\FID_F\Data\FF071425\
 Data File : FF016154.D
 Signal(s) : FID2B.ch
 Acq On : 14 Jul 2025 15:49
 Operator : YP\AJ
 Sample : PB168834BL
 Misc :
 ALS Vial : 73 Sample Multiplier: 1

Instrument :
 FID_F
 ClientSampleId :
 PB168834BL

Integration File: autoint1.e
 Quant Time: Jul 15 00:48:09 2025
 Quant Method : Z:\pestpcbsrv\HPCHEM1\FID_F\Method\FF071025.M
 Quant Title :
 QLast Update : Thu Jul 10 12:51:11 2025
 Response via : Initial Calibration
 Integrator: ChemStation

Volume Inj. : 1uL
 Signal Phase : Rxi-1ms
 Signal Info : 20mx0.18mmx0.18um

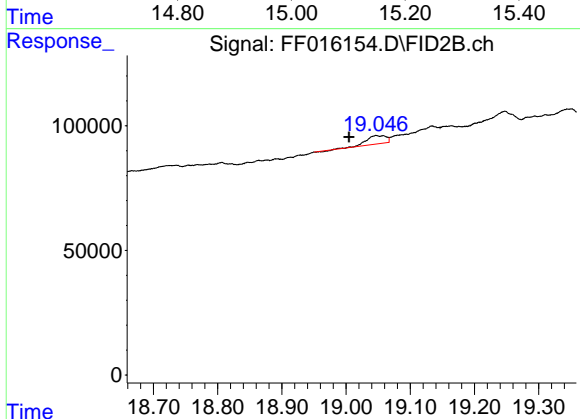




#9 TETRACOSANE-d50 (SURROGATE)

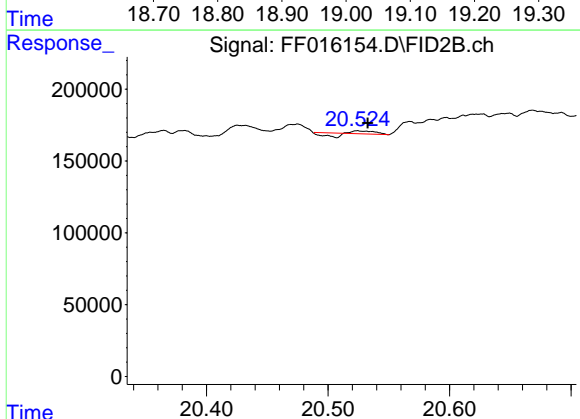
R.T.: 15.099 min
 Delta R.T.: 0.003 min
 Response: 1859204
 Conc: 19.09 ug/ml

Instrument :
 FID_F
 ClientSampleId :
 PB168834BL



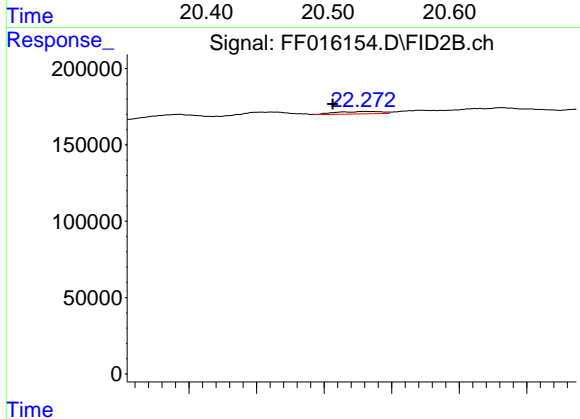
#14 N-DOTRIACONTANE

R.T.: 19.047 min
 Delta R.T.: 0.043 min
 Response: 68194
 Conc: 0.65 ug/ml



#16 N-HEXATRIACONTANE

R.T.: 20.524 min
 Delta R.T.: -0.009 min
 Response: 12433
 Conc: 0.15 ug/ml



#18 N-TETRACONTANE

R.T.: 22.273 min
 Delta R.T.: 0.010 min
 Response: 14739
 Conc: 0.22 ug/ml